

# Gateway to the Arborway

Boston, Massachusetts

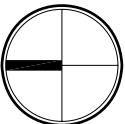
## Multi-Use Path Site Treatment Plan Key Plan

DRAWN BY: SW/GC  
CHECKED BY: GC  
DATE: JULY 2008  
SCALE: AS NOTED


DRAWING NO.  
**L1.0**

NOTE: CONSTRUCTION OF THE MULTI-USE PATH SHOULD NOT OCCUR UNTIL THE CAUSES OF THE ARBORETUM WALL AND PAVEMENT SETTLEMENT AND CRACKING ARE DETERMINED, AND ADEQUATELY REPAIRED.

NOT TO SCALE



NORTH



**Pressley Associates  
Landscape Architects**

432 Columbus Street  
Cambridge, MA 02141  
T: 617-491-5300  
F: 617-491-7502  
[www.pressleyinc.com](http://www.pressleyinc.com)

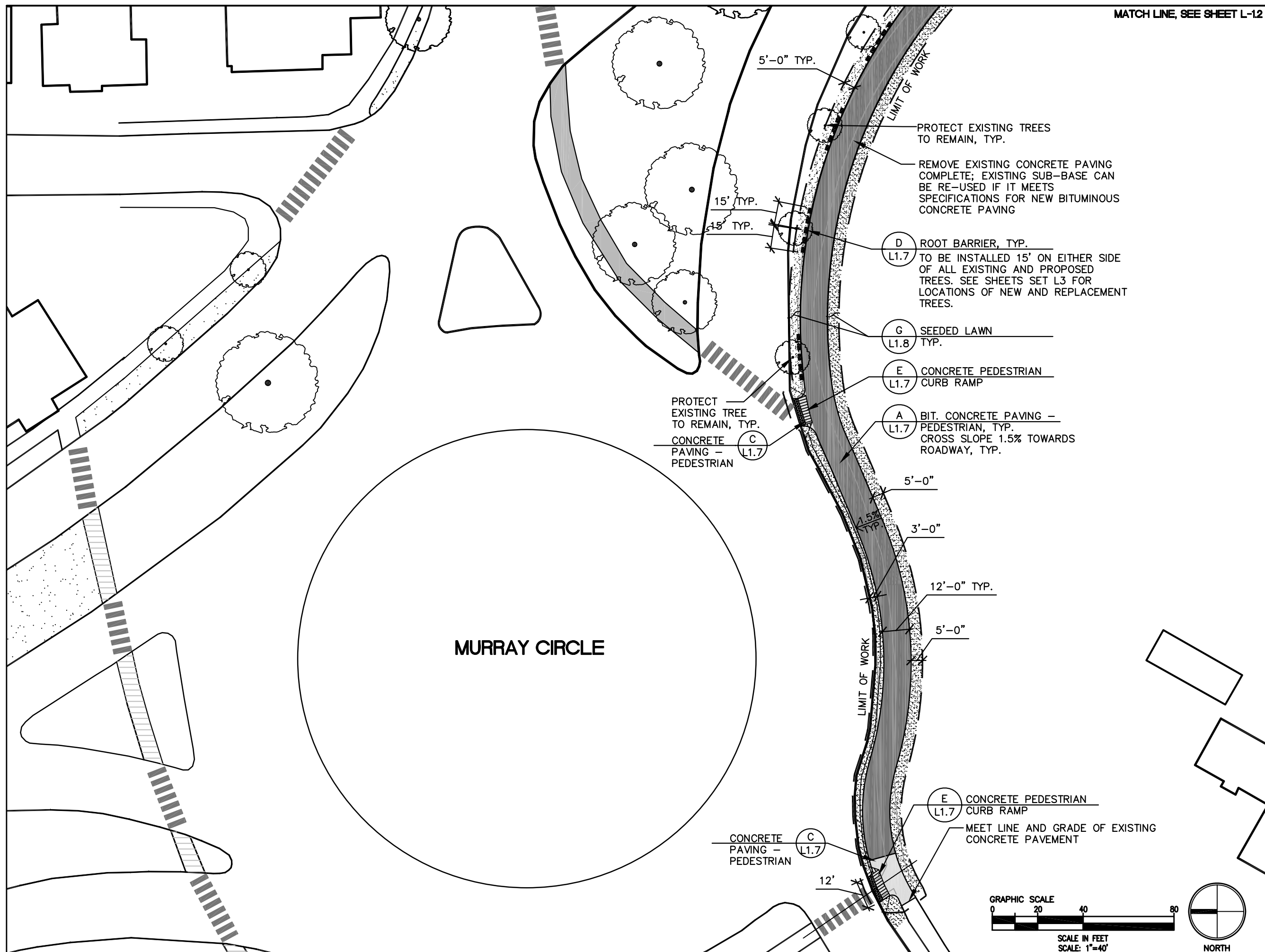
dcr 

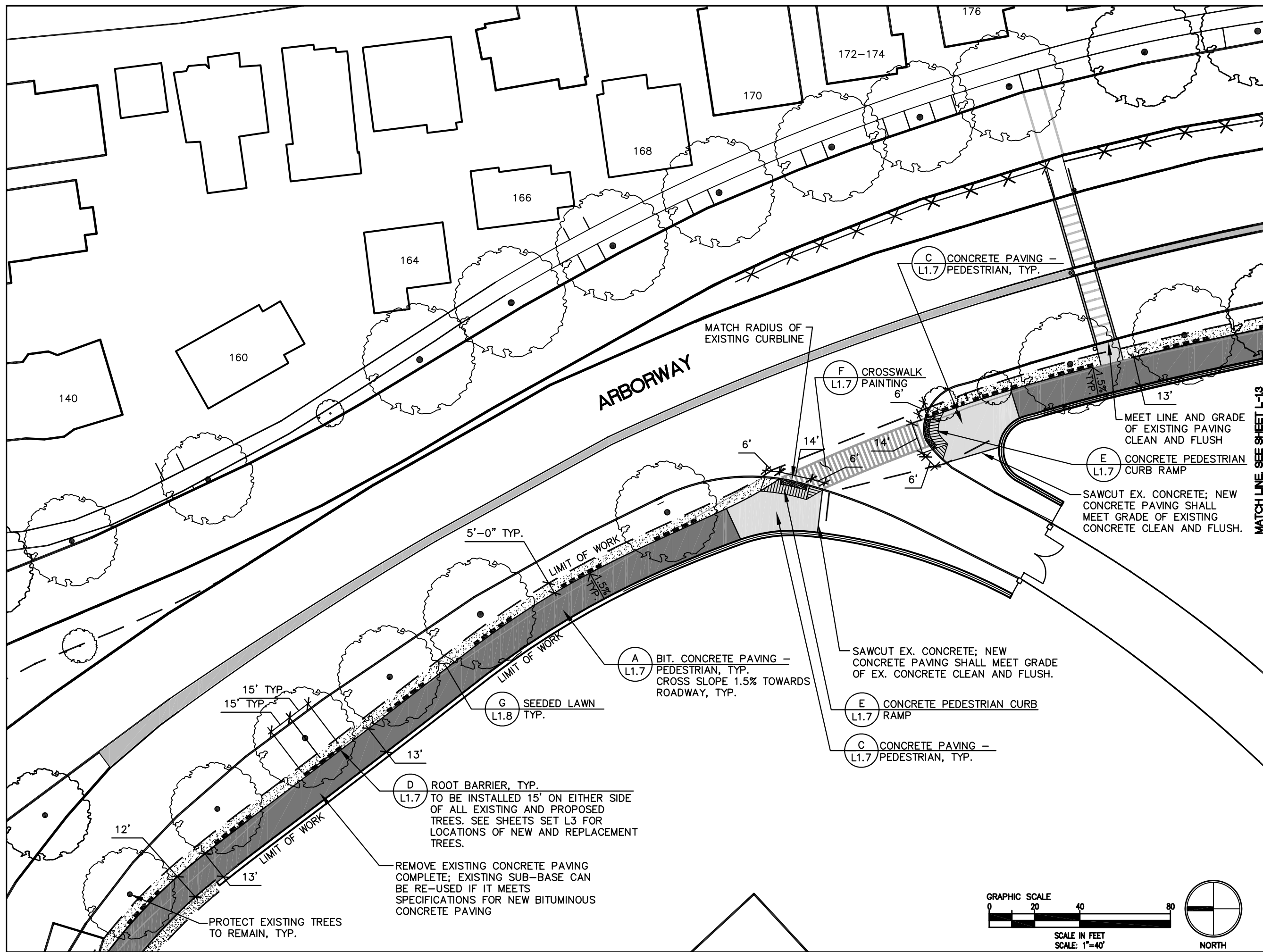
# Gateway to the Arborway

## Boston, Massachusetts

DRAWING NO.

L1.1



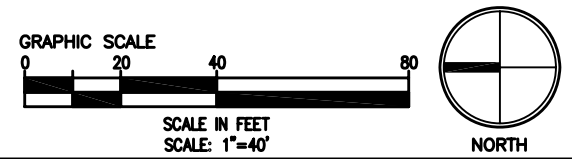


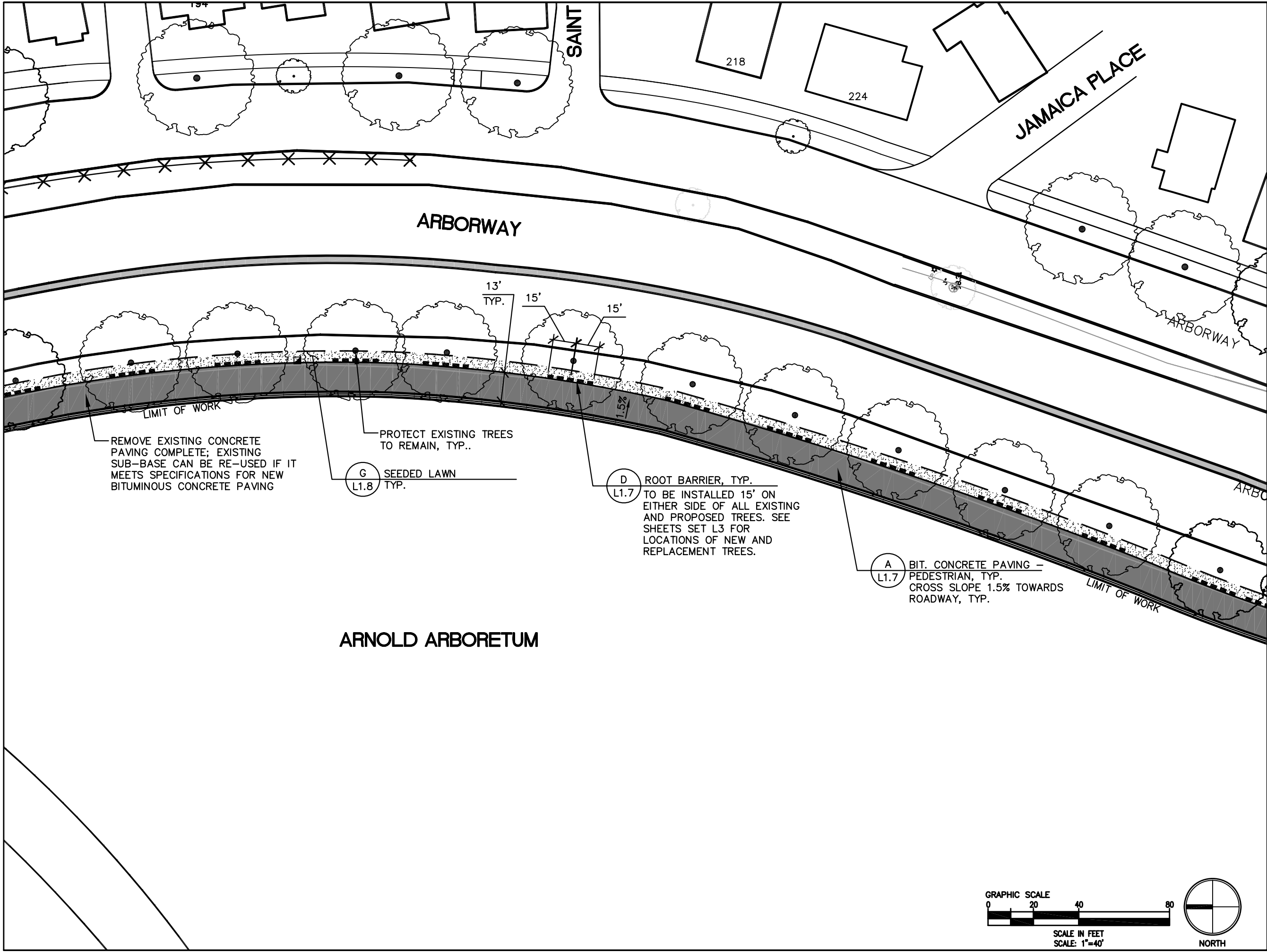
# Gateway to the Arborway

## Boston, Massachusetts

Multi-Use Path  
Site Treatment Plan

DRAWN BY: SW/GC	DRAWING NO.
CHECKED BY: GC	L1.2
DATE: JULY 2008	
SCALE: AS NOTED	





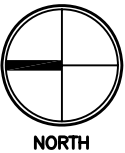
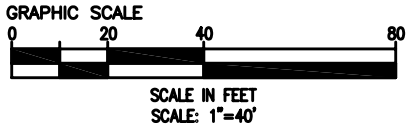
# Gateway to the Arborway Boston, Massachusetts

## Multi-Use Path Site Treatment Plan

DRAWN BY: SW/GC  
CHECKED BY: GC  
DATE: JULY 2008  
SCALE: AS NOTED

DRAWING NO.

L1.3





Prepared For:

Massachusetts Department of  
Conservation and Recreation

# Gateway to the Arborway

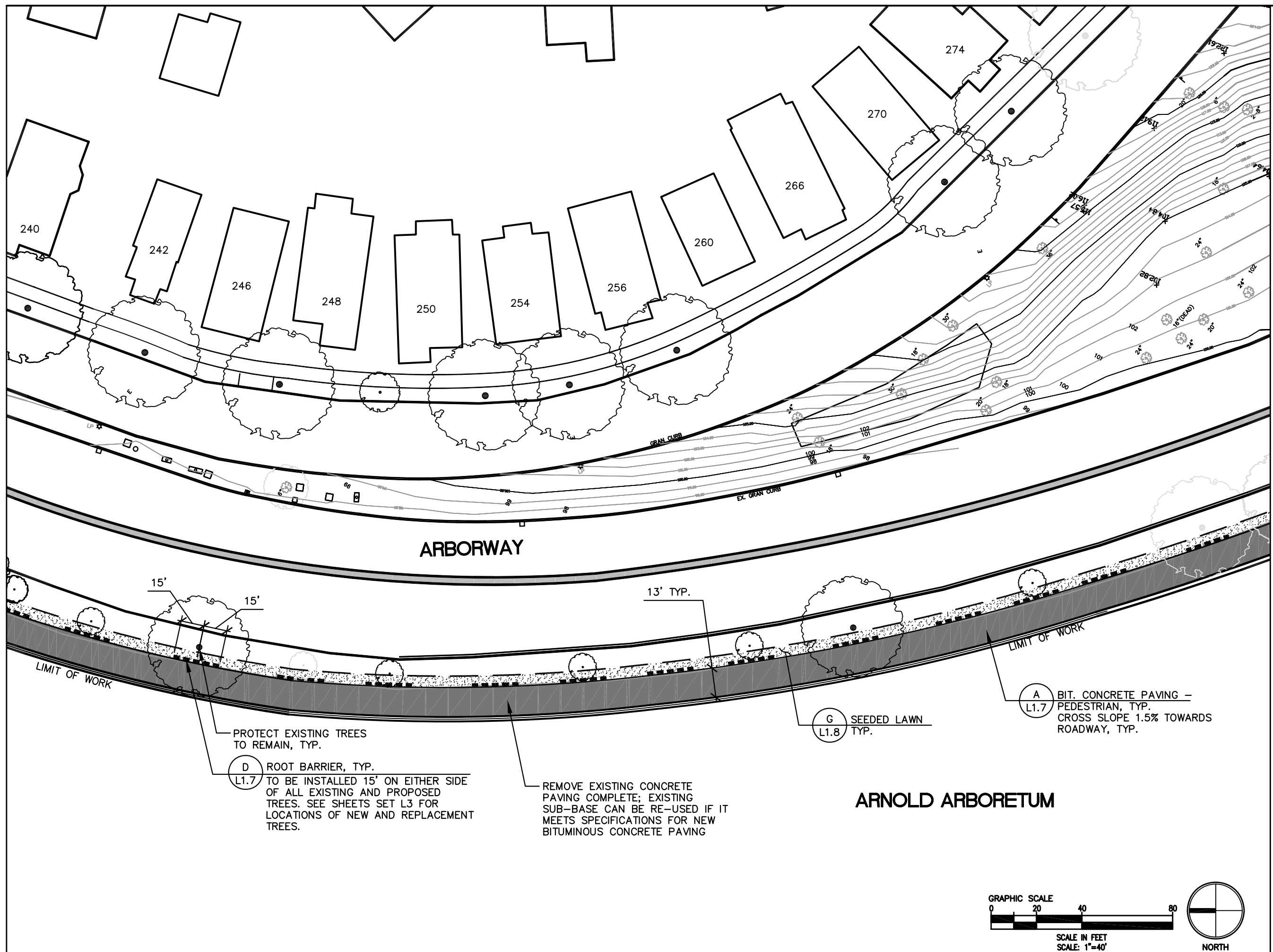
## Boston, Massachusetts

## Multi-Use Path Site Treatment Plan

DRAWN BY: SW/GC	D
CHECKED BY: GC	
DATE: JULY 2008	
SCALE: AS NOTED	

DRAWING NO.

L1.4



pressley

Prepared For:



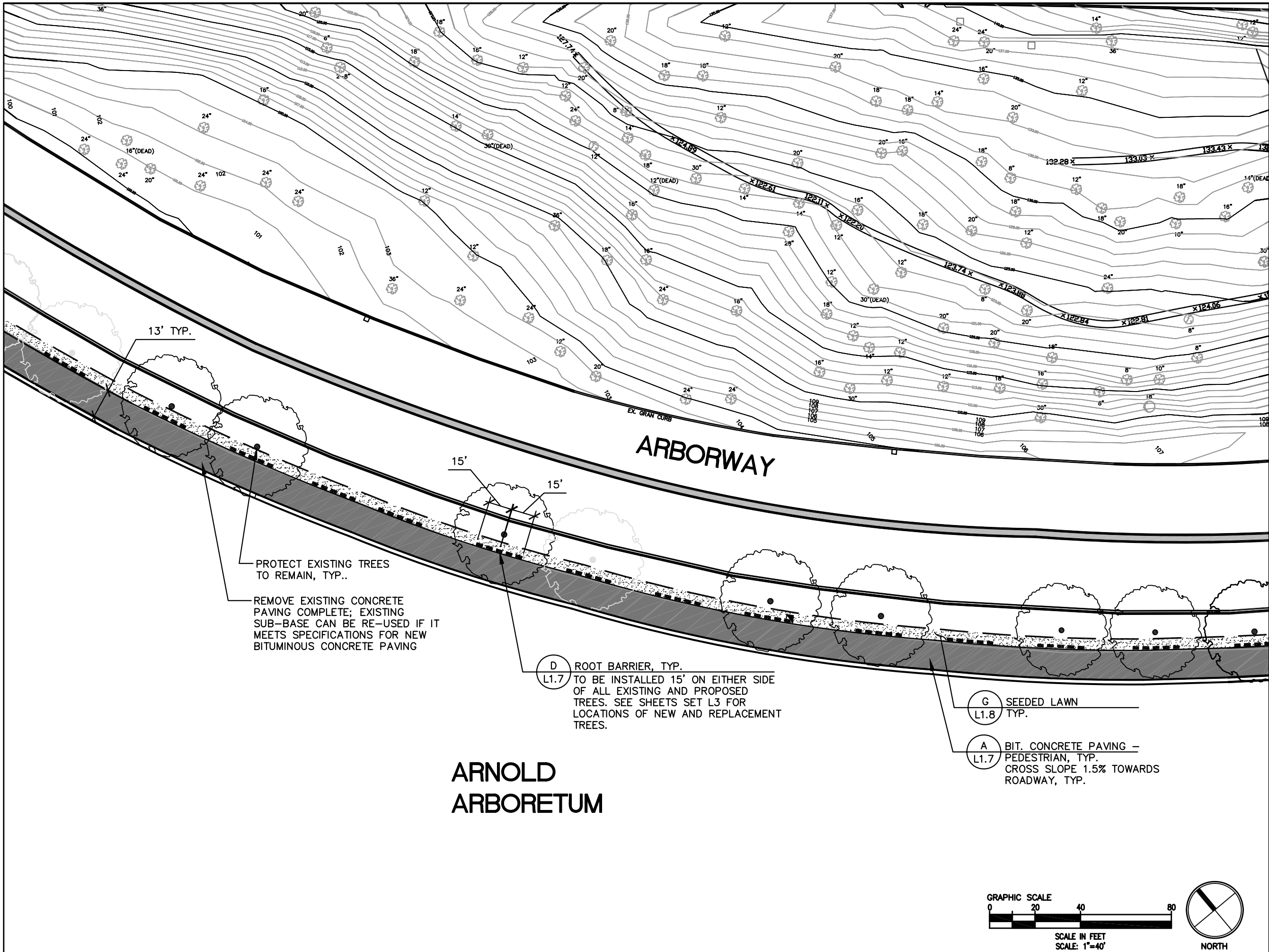
Massachusetts Department of  
Conservation and Recreation

# Gateway to the Arborway Boston, Massachusetts

Multi-Use Path  
Site Treatment Plan

DRAWN BY: SW/GC  
CHECKED BY: GC  
DATE: JULY 2008  
SCALE: AS NOTED

DRAWING NO.  
**L1.5**







Prepared For:

Massachusetts Department of  
Conservation and Recreation

# Gateway to the Arborway

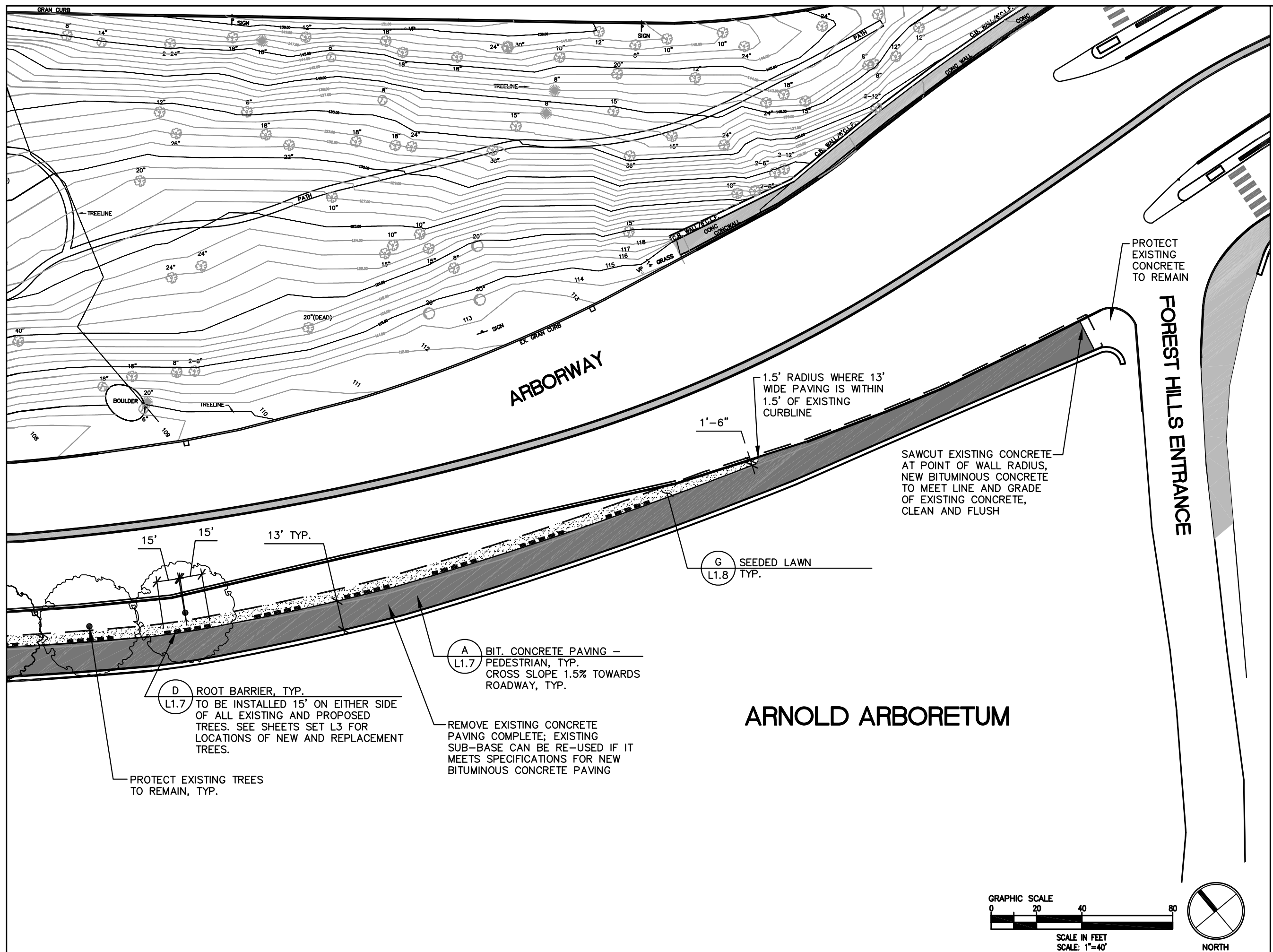
## Boston, Massachusetts

## Multi-Use Path Site Treatment Plan

DRAWN BY: SW/GC	D
CHECKED BY: GC	
DATE: JULY 2008	
SCALE: AS NOTED	

DRAWING NO.

L1.6



pressley

Prepared For:



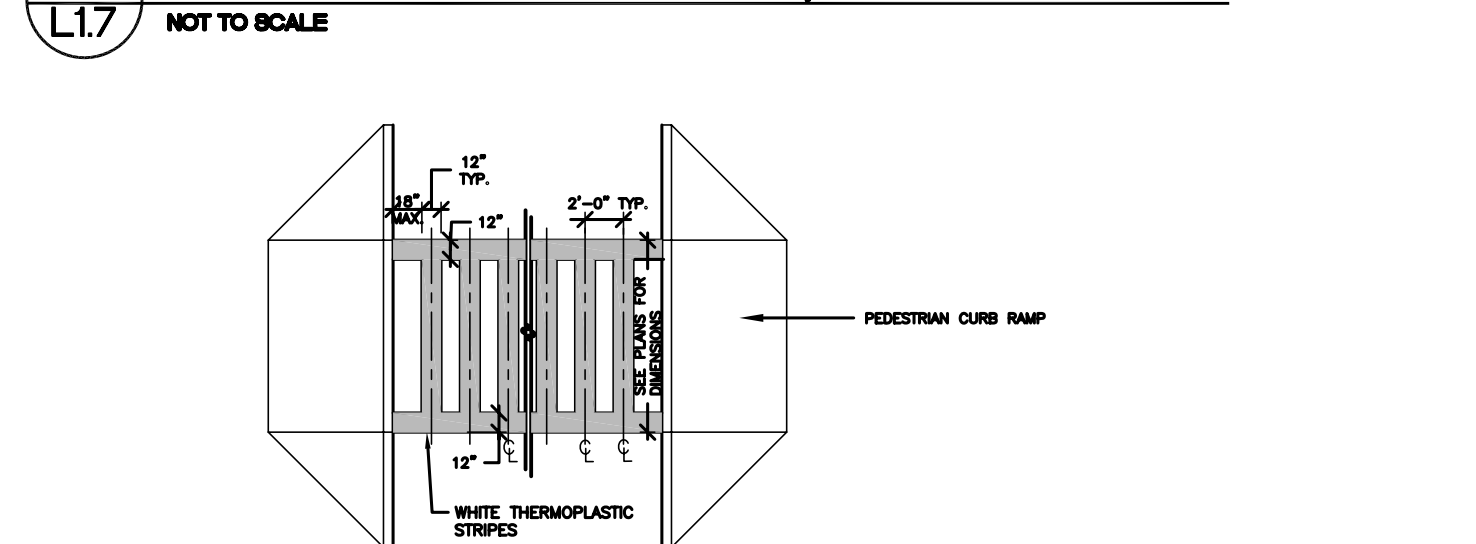
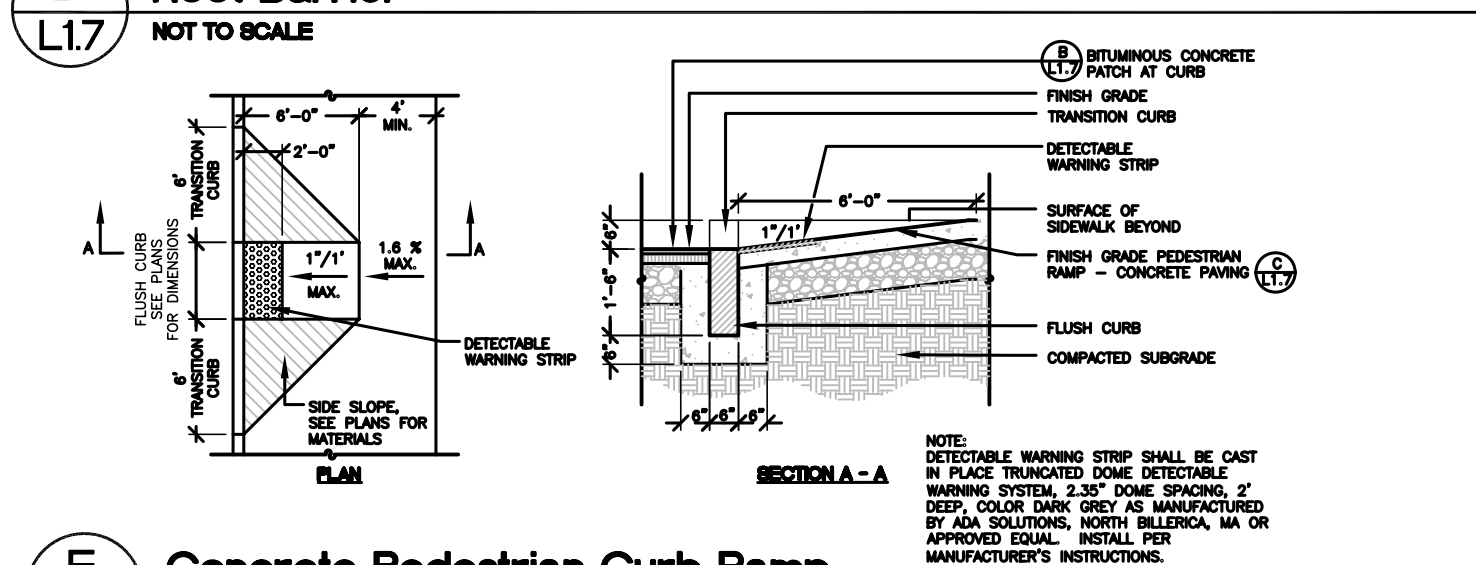
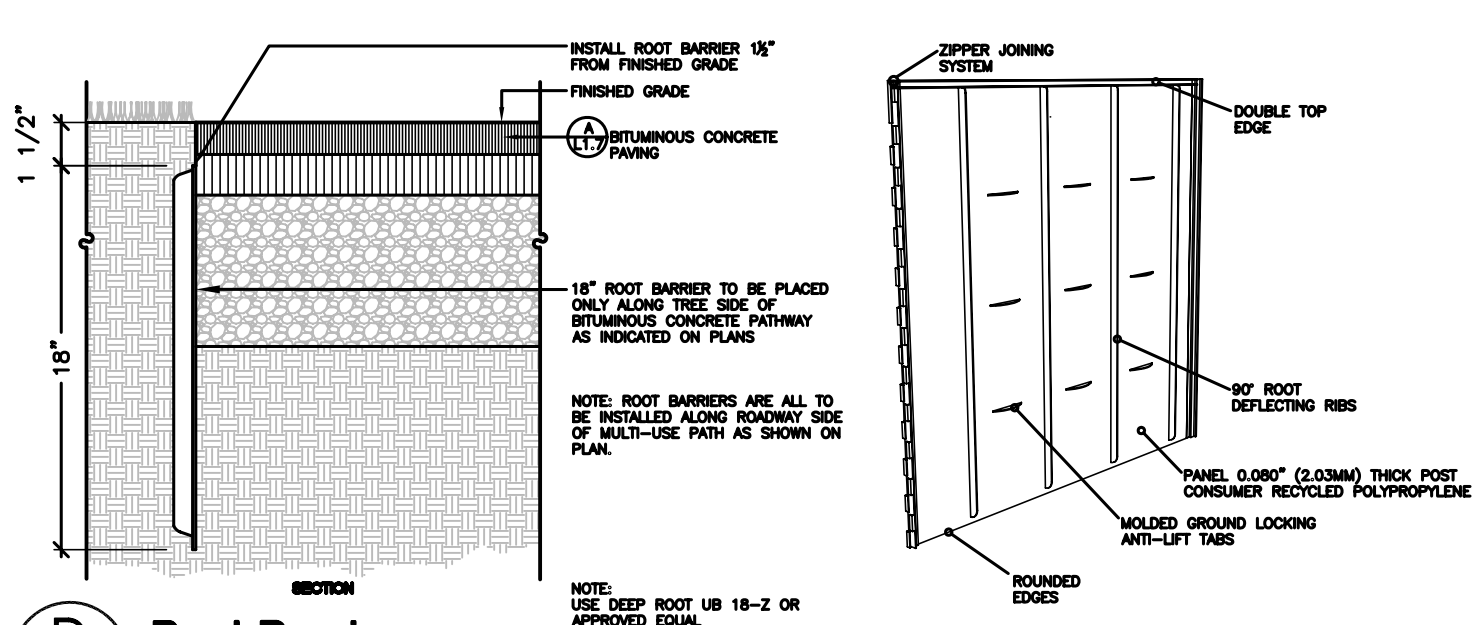
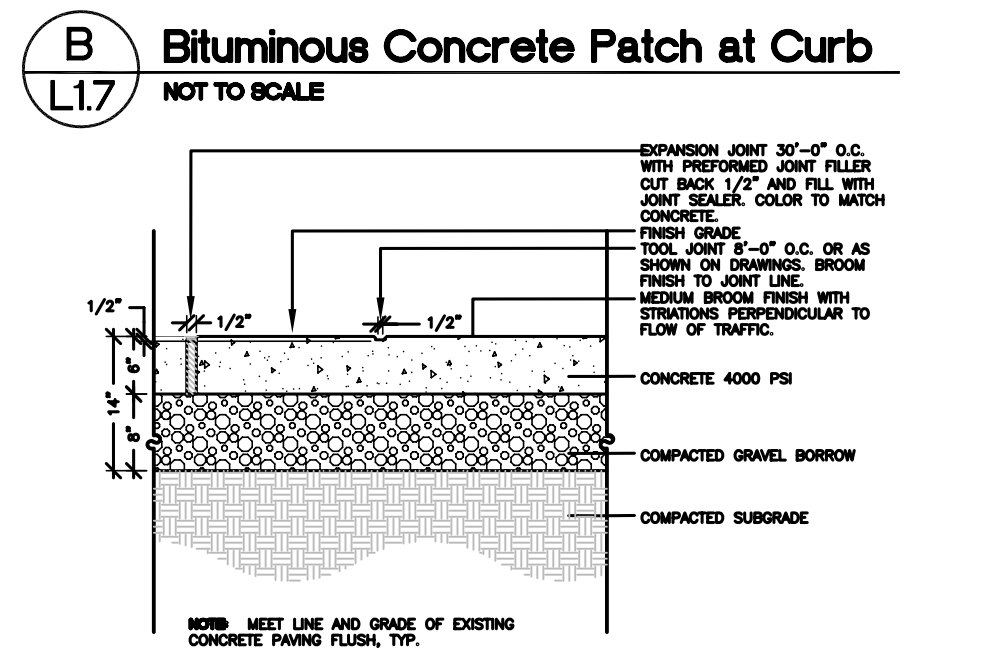
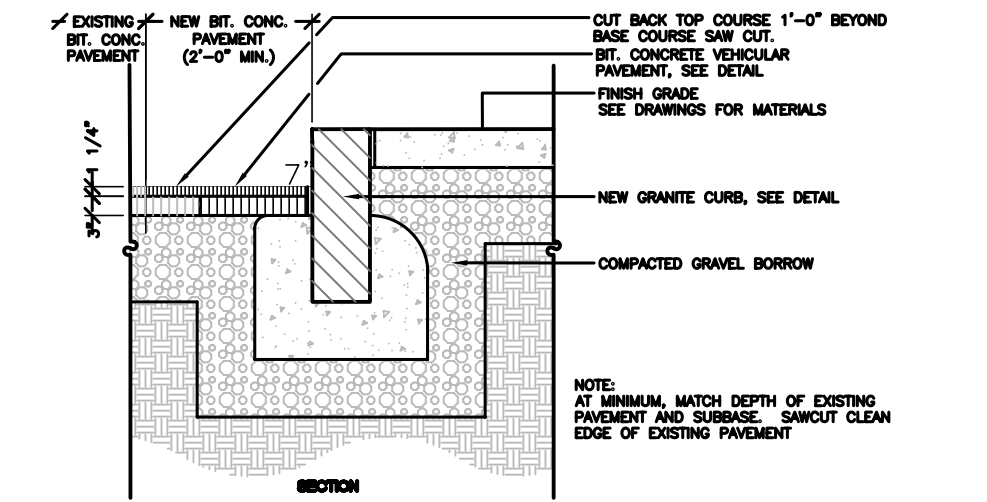
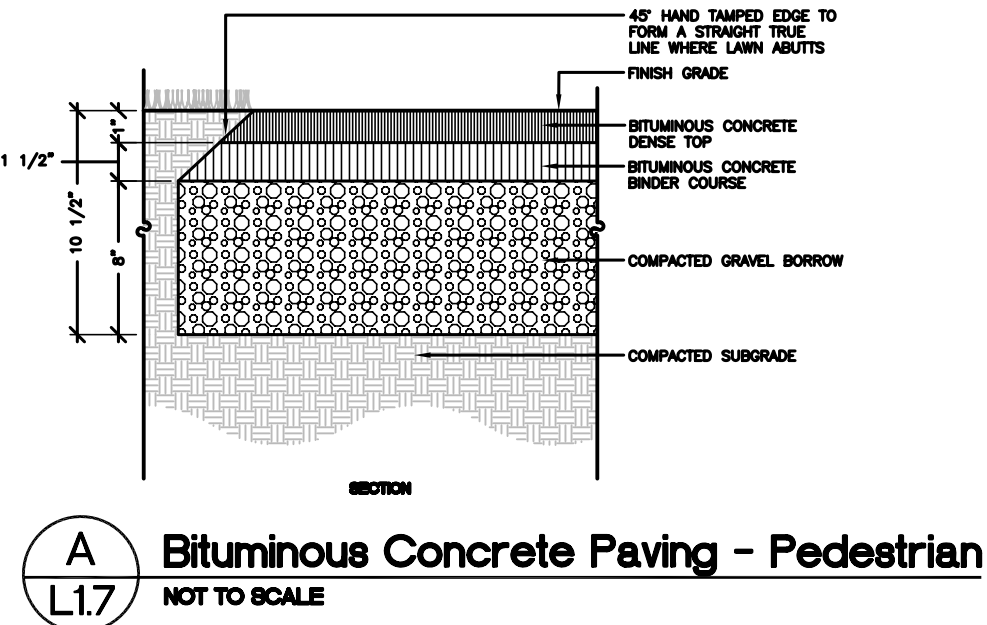
Massachusetts Department of  
Conservation and Recreation

# Gateway to the Arborway Boston, Massachusetts

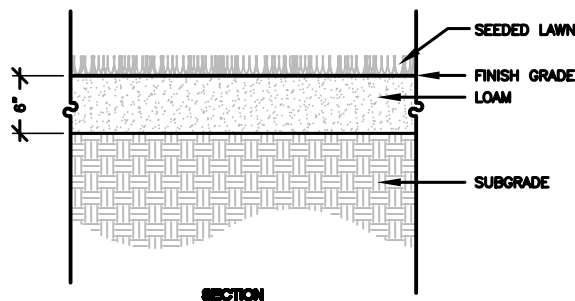
Multi-Use Path  
Site Treatment Plan  
Details

DRAWN BY: SW/GC  
CHECKED BY: GC  
DATE: JULY 2008  
SCALE: AS NOTED

DRAWING NO.  
L1.7







**LAWN SEED MIX:**  
SHALL BE COMPOSED OF THE FOLLOWING VARIETIES WHICH SHALL BE MIXED IN THE PROPORTIONS AND SHALL TEST TO MINIMUM PERCENTAGES, PURITY, AND GERMINATION SPECIFIED.

COMMON NAME	PROPORTION	GERMINATION MINIMUM	PURITY MINIMUM
CREEPING RED FESCUE OR CHEWING'S FESCUE	50%	85%	95%
KENTUCKY BLUEGRASS (FYLKING)	20%	90%	90%
MANHATTAN PERENNIAL RYE	25%	90%	90%
RED TOP	5%	85%	92%

\* ANNUAL RYEGRASS SHALL NOT EXCEED 5%

SEEDING RATE: 8 POUNDS PER 1000 SQUARE FOOT.

G  
L1.8

Seeded Lawn

NOT TO SCALE

pressley

Prepared For:



Massachusetts Department of  
Conservation and Recreation

Gateway to the Arborway

Boston, Massachusetts

Multi-Use Path  
Site Treatment Plan  
Details

DRAWN BY: SW/GC  
CHECKED BY: GC  
DATE: JULY 2008  
SCALE: AS NOTED

DRAWING NO.  
L1.8