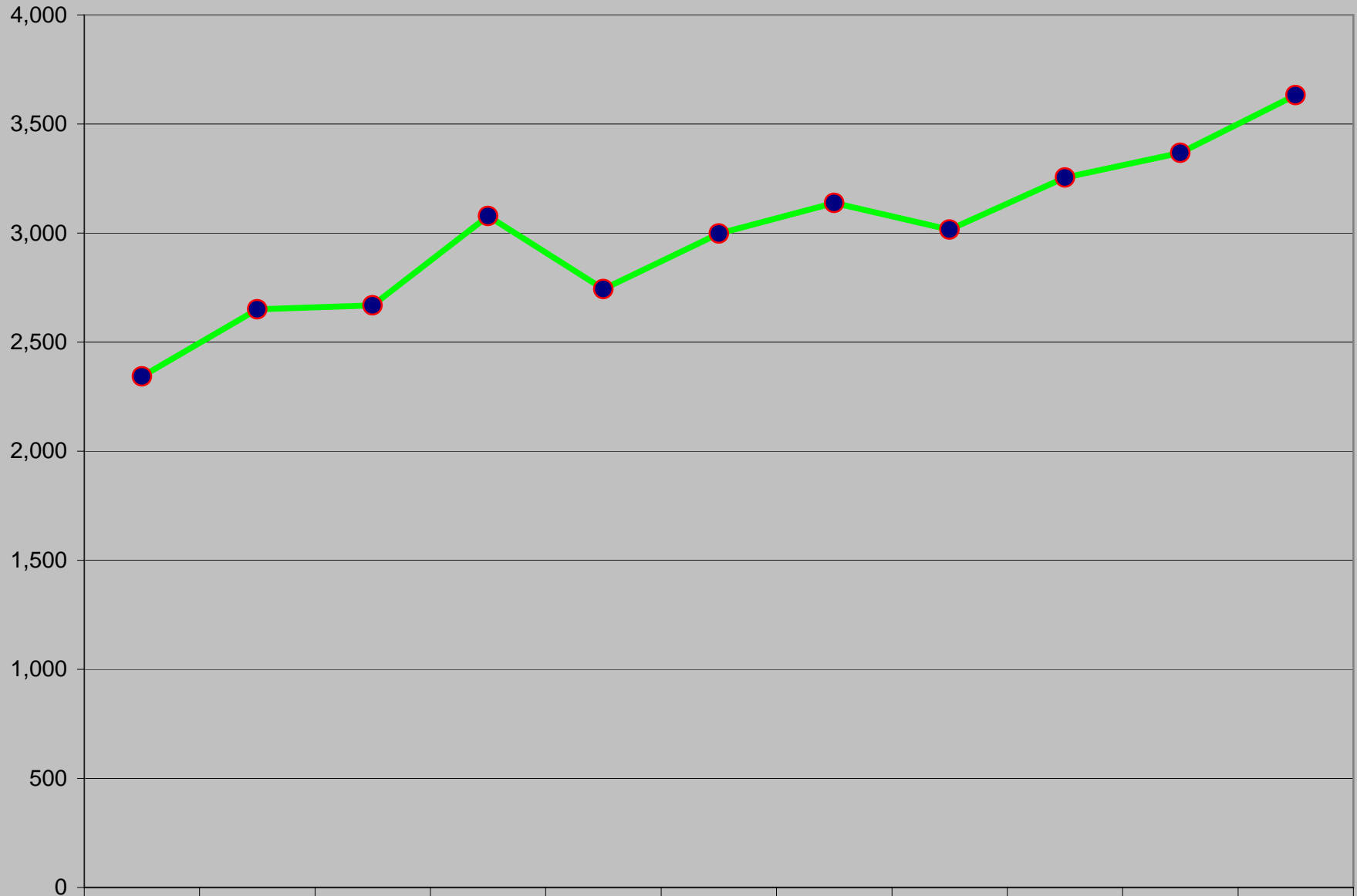


**Total Number of Care and Protection Petitions  
1998 - 2008  
An Increase of 55%**



● Total C&P Petitions

1998	1999	2000	2001	2002	2003	2004	2005	2006	2007	2008
2,343	2,651	2,669	3,078	2,743	2,998	3,138	3,016	3,254	3,368	3,632

**Care and Protection Petitions  
Ten Year Comparison  
1998 - 2008**

	1998	1999	2000	2001	2002	2003	2004	2005	2006	2007	2008
Total C&P Petitions	2,343	2,651	2,669	3,078	2,743	2,998	3,138	3,016	3,254	3,368	3,632

<b>Barnstable County</b>	1998	1999	2000	2001	2002	2003	2004	2005	2006	2007	2008
Barnstable	35	18	33	23	35	88	37	57	37	42	51
Edgartown	0	6	0	3	1	4	2	7	2	6	4
Falmouth	7	12	15	21	25	24	22	22	15	21	19
Nantucket	0	4	1	1	0	1	1	3	5	2	2
Orleans	6	13	10	18	7	21	20	18	17	8	14
Plymouth	25	22	26	19	22	41	19	31	32	27	39
Total	73	75	85	85	90	179	101	138	108	106	129

<b>Berkshire County</b>	1998	1999	2000	2001	2002	2003	2004	2005	2006	2007	2008
Great Barrington	4	3	4	6	3	6	8	4	5	10	6
North Adams	9	28	28	32	30	23	33	40	52	49	59
Pittsfield	53	50	42	58	45	69	88	77	72	80	89
Total	66	81	74	96	78	98	129	121	129	139	154

<b>Bristol County</b>	1998	1999	2000	2001	2002	2003	2004	2005	2006	2007	2008
Attleboro	21	32	34	51	39	32	37	32	30	36	22
Fall River	72	106	113	154	125	131	137	154	115	99	112
New Bedford	58	74	91	105	78	119	111	115	119	109	149
Taunton	33	41	47	42	39	40	52	65	42	54	51
Total	184	253	285	352	281	322	337	366	306	298	334

**Care and Protection Petitions  
Ten Year Comparison**

1998 - 2008

<b>Essex County</b>	<b>1998</b>	<b>1999</b>	<b>2000</b>	<b>2001</b>	<b>2002</b>	<b>2003</b>	<b>2004</b>	<b>2005</b>	<b>2006</b>	<b>2007</b>	<b>2008</b>
Gloucester	22	17	15	20	17	17	25	22	13	9	16
Haverhill	47	0	0	0	0	0	0	0	0	0	0
Ipswich	3	0	0	0	0	0	0	0	0	0	0
Lawrence	100	163	198	188	141	159	169	147	184	171	160
Lynn	127	114	110	94	78	81	93	99	82	85	110
Newburyport	14	32	21	28	39	28	17	28	30	28	26
Peabody	19	0	0	0	0	0	0	0	0	0	0
Salem	66	67	58	76	78	96	90	79	79	97	105
<b>Total</b>	<b>398</b>	<b>393</b>	<b>402</b>	<b>406</b>	<b>353</b>	<b>381</b>	<b>394</b>	<b>375</b>	<b>388</b>	<b>390</b>	<b>417</b>

<b>Franklin/Hampshire County</b>	<b>1998</b>	<b>1999</b>	<b>2000</b>	<b>2001</b>	<b>2002</b>	<b>2003</b>	<b>2004</b>	<b>2005</b>	<b>2006</b>	<b>2007</b>	<b>2008</b>
Greenfield	19	41	44	41	48	32	40	40	50	50	55
Northampton	20	24	30	24	36	27	44	43	37	50	50
Orange	15	18	37	31	24	24	17	22	28	30	36
Ware	8	11	11	14	7	9	10	12	19	19	15
<b>Total</b>	<b>62</b>	<b>94</b>	<b>122</b>	<b>110</b>	<b>115</b>	<b>92</b>	<b>111</b>	<b>117</b>	<b>134</b>	<b>149</b>	<b>156</b>

<b>Hamdpen County</b>	<b>1998</b>	<b>1999</b>	<b>2000</b>	<b>2001</b>	<b>2002</b>	<b>2003</b>	<b>2004</b>	<b>2005</b>	<b>2006</b>	<b>2007</b>	<b>2008</b>
Chicopee	14	0	0	0	0	0	0	0	0	0	0
Holyoke	72	92	97	95	84	86	88	109	110	94	123
Palmer	5	0	0	0	0	0	0	0	0	0	0
Springfield	260	276	313	310	281	336	279	315	299	349	346
<b>Total</b>	<b>351</b>	<b>368</b>	<b>410</b>	<b>405</b>	<b>365</b>	<b>422</b>	<b>367</b>	<b>424</b>	<b>409</b>	<b>443</b>	<b>469</b>

<b>Middlesex County</b>	<b>1998</b>	<b>1999</b>	<b>2000</b>	<b>2001</b>	<b>2002</b>	<b>2003</b>	<b>2004</b>	<b>2005</b>	<b>2006</b>	<b>2007</b>	<b>2008</b>
Ayer	16	20	20	16	13	13	0	0	0	0	0
Cambridge	49	46	55	57	52	82	207	176	216	190	238
Concord	8	9	13	11	9	7	0	0	0	0	0
Framingham	40	37	34	32	36	40	109	105	223	123	147
Lowell	83	65	8	109	108	101	150	118	145	131	174
Malden	27	43	27	49	48	27	0	0	0	0	0
Marlborough	12	11	9	19	27	17	0	0	0	0	0
Natick	7	7	1	8	4	3	0	0	0	0	0
Newton	3	7	8	6	3	2	0	0	0	0	0
Somerville	59	85	39	35	50	38	0	0	0	0	0
Waltham	15	34	18	13	21	11	0	0	0	0	0
Woburn	22	24	25	20	27	15	0	0	0	0	0
<b>Total</b>	<b>341</b>	<b>388</b>	<b>257</b>	<b>375</b>	<b>398</b>	<b>356</b>	<b>466</b>	<b>399</b>	<b>584</b>	<b>444</b>	<b>559</b>

**Care and Protection Petitions  
Ten Year Comparison**

~~1998 - 2008~~

<b>Norfolk County</b>	<b>1998</b>	<b>1999</b>	<b>2000</b>	<b>2001</b>	<b>2002</b>	<b>2003</b>	<b>2004</b>	<b>2005</b>	<b>2006</b>	<b>2007</b>	<b>2008</b>
Brookline	0	0	1	0	3	3	1	1	3	3	1
Dedham	18	12	10	16	10	21	42	47	53	64	60
Quincy	81	75	82	86	93	92	96	92	101	97	82
Stoughton	0	5	4	11	13	8	0	0	0	0	0
Wrentham	13	9	14	10	7	15	0	0	0	0	0
<b>Total</b>	<b>112</b>	<b>101</b>	<b>111</b>	<b>123</b>	<b>126</b>	<b>139</b>	<b>139</b>	<b>140</b>	<b>157</b>	<b>164</b>	<b>143</b>

<b>Plymouth County</b>	<b>1998</b>	<b>1999</b>	<b>2000</b>	<b>2001</b>	<b>2002</b>	<b>2003</b>	<b>2004</b>	<b>2005</b>	<b>2006</b>	<b>2007</b>	<b>2008</b>
Brockton	89	105	112	96	87	102	80	78	95	106	123
Hingham	18	23	8	18	15	19	25	15	24	13	21
Wareham	17	21	15	6	22	25	34	26	27	21	27
<b>Total</b>	<b>124</b>	<b>149</b>	<b>135</b>	<b>120</b>	<b>124</b>	<b>146</b>	<b>139</b>	<b>119</b>	<b>146</b>	<b>140</b>	<b>171</b>

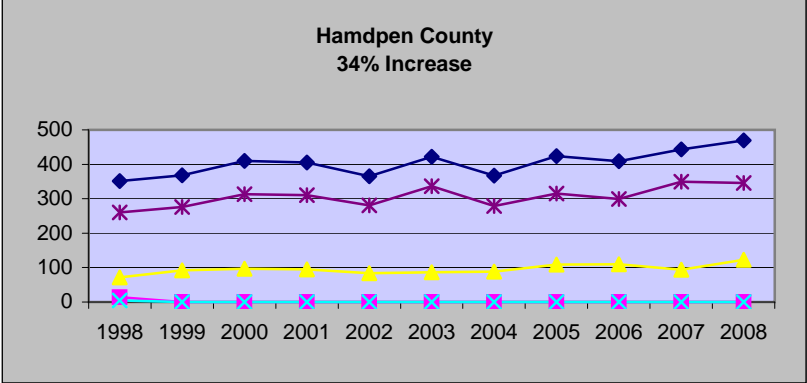
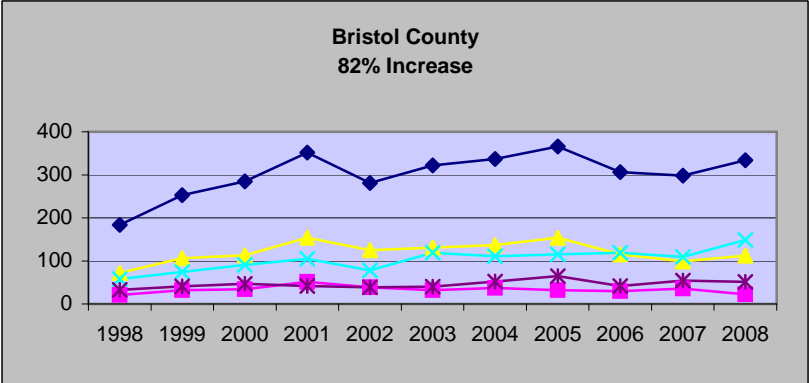
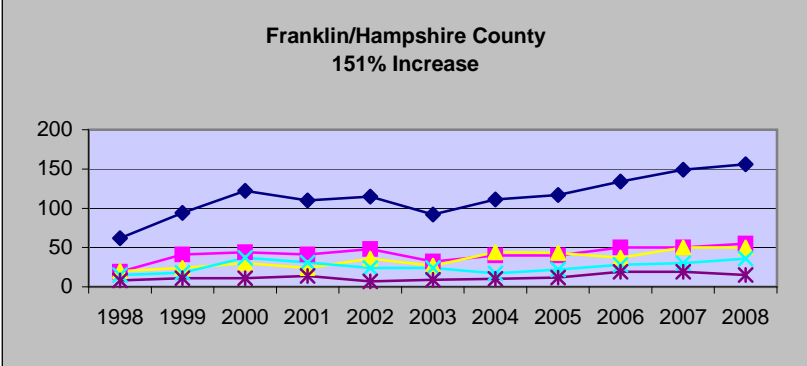
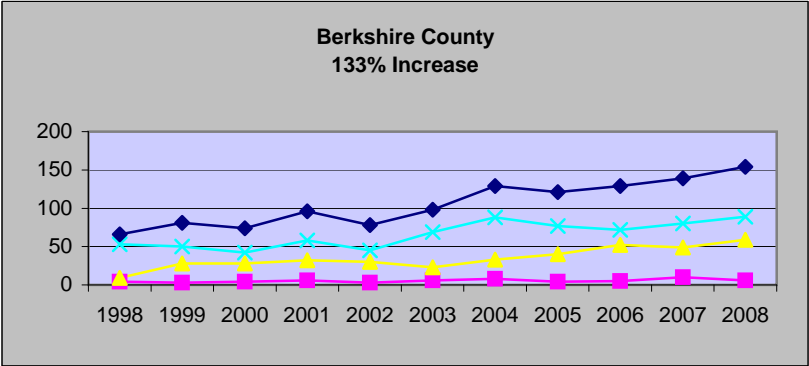
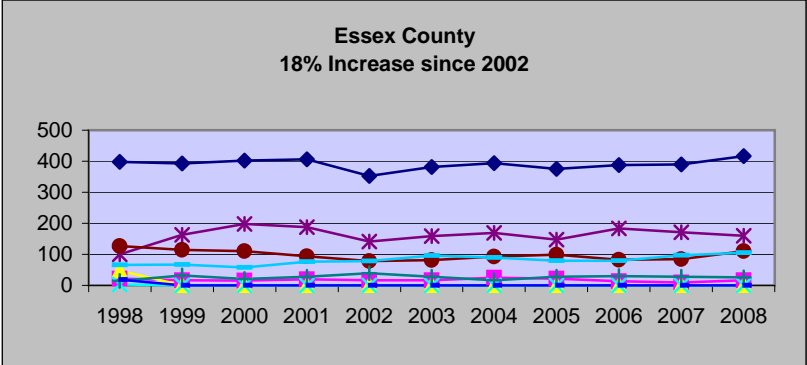
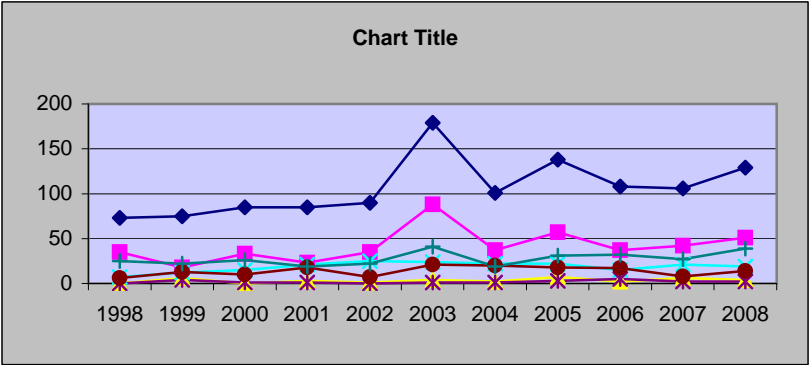
<b>Suffolk County</b>	<b>1998</b>	<b>1999</b>	<b>2000</b>	<b>2001</b>	<b>2002</b>	<b>2003</b>	<b>2004</b>	<b>2005</b>	<b>2006</b>	<b>2007</b>	<b>2008</b>
BJC	359	383	369	422	415	385	382	443	470	639	586
<b>Total</b>	<b>359</b>	<b>383</b>	<b>369</b>	<b>422</b>	<b>415</b>	<b>385</b>	<b>382</b>	<b>443</b>	<b>470</b>	<b>639</b>	<b>586</b>

<b>Worcester County</b>	<b>1998</b>	<b>1999</b>	<b>2000</b>	<b>2001</b>	<b>2002</b>	<b>2003</b>	<b>2004</b>	<b>2005</b>	<b>2006</b>	<b>2007</b>	<b>2008</b>
Clinton	3	0	0	0	0	0	0	0	0	0	0
Dudley	17	30	39	49	58	57	76	46	39	41	59
Fitchburg	33	90	92	120	70	89	120	65	70	77	81
Gardner	26	0	0	0	0	0	0	0	0	0	0
Leominster	7	17	27	20	21	30	39	23	25	33	28
Milford	5	20	24	23	30	38	42	22	31	23	59
Uxbridge	5	0	0	0	0	0	0	0	0	0	0
Westfield	11	0	0	0	0	0	0	0	0	0	0
Winchendon	3	0	0	0	0	0	0	0	0	0	0
Worcester	163	209	237	372	219	264	296	218	258	282	287
<b>Total</b>	<b>273</b>	<b>366</b>	<b>419</b>	<b>584</b>	<b>398</b>	<b>478</b>	<b>573</b>	<b>374</b>	<b>423</b>	<b>456</b>	<b>514</b>

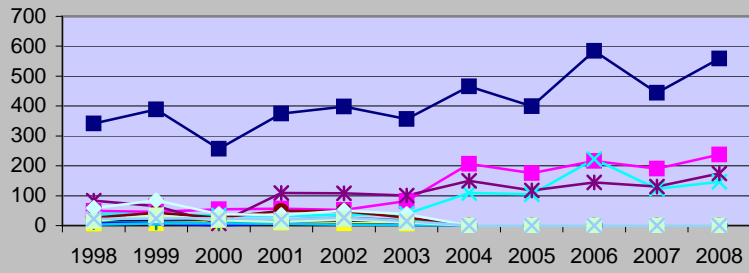
<b>Total</b>	<b>2,343</b>	<b>2,651</b>	<b>2,669</b>	<b>3,078</b>	<b>2,743</b>	<b>2,998</b>	<b>3,138</b>	<b>3,016</b>	<b>3,254</b>	<b>3,368</b>	<b>3,632</b>
--------------	--------------	--------------	--------------	--------------	--------------	--------------	--------------	--------------	--------------	--------------	--------------

**Care and Protection Children  
2004 - 2008**

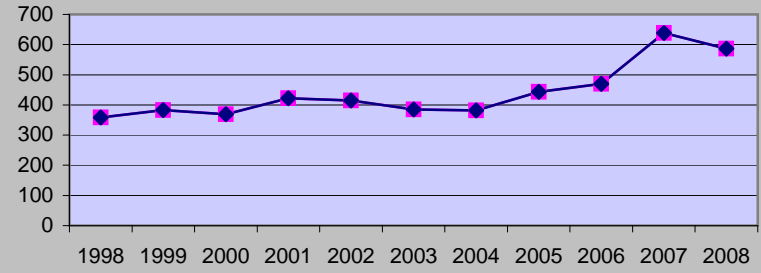
	2004	2005	2006	2007	2008
Total C&P Petitions	11,077	11,000	10,822	11,229	11,069



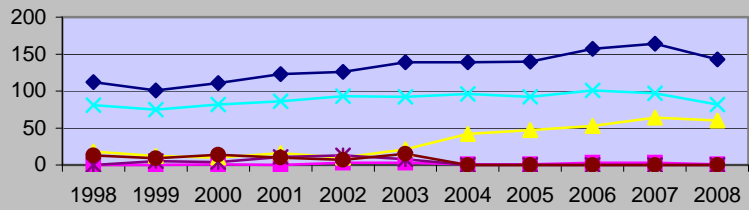
**Middlesex County**  
64% Increase



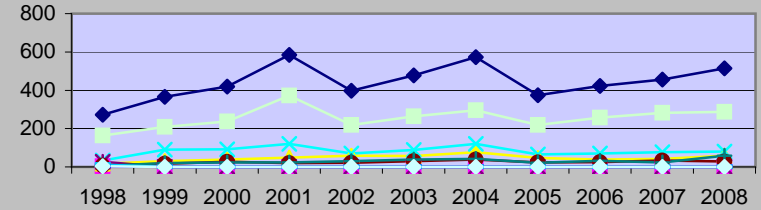
**Suffolk County**  
63% Increase



**Norfolk County**  
28% Increase



**Worcester County**  
88% Increase



**Plymouth County**  
38% Increase

