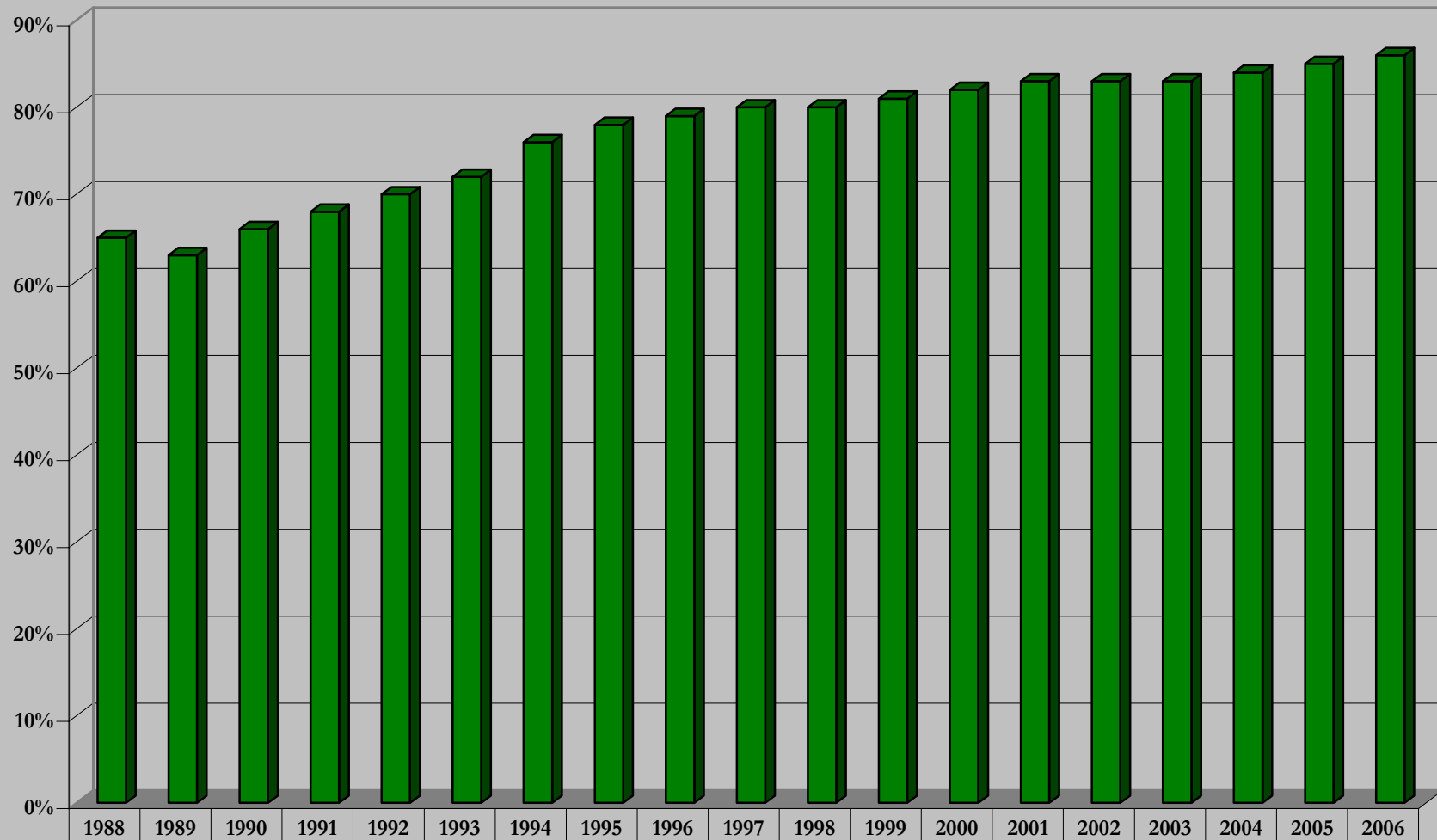


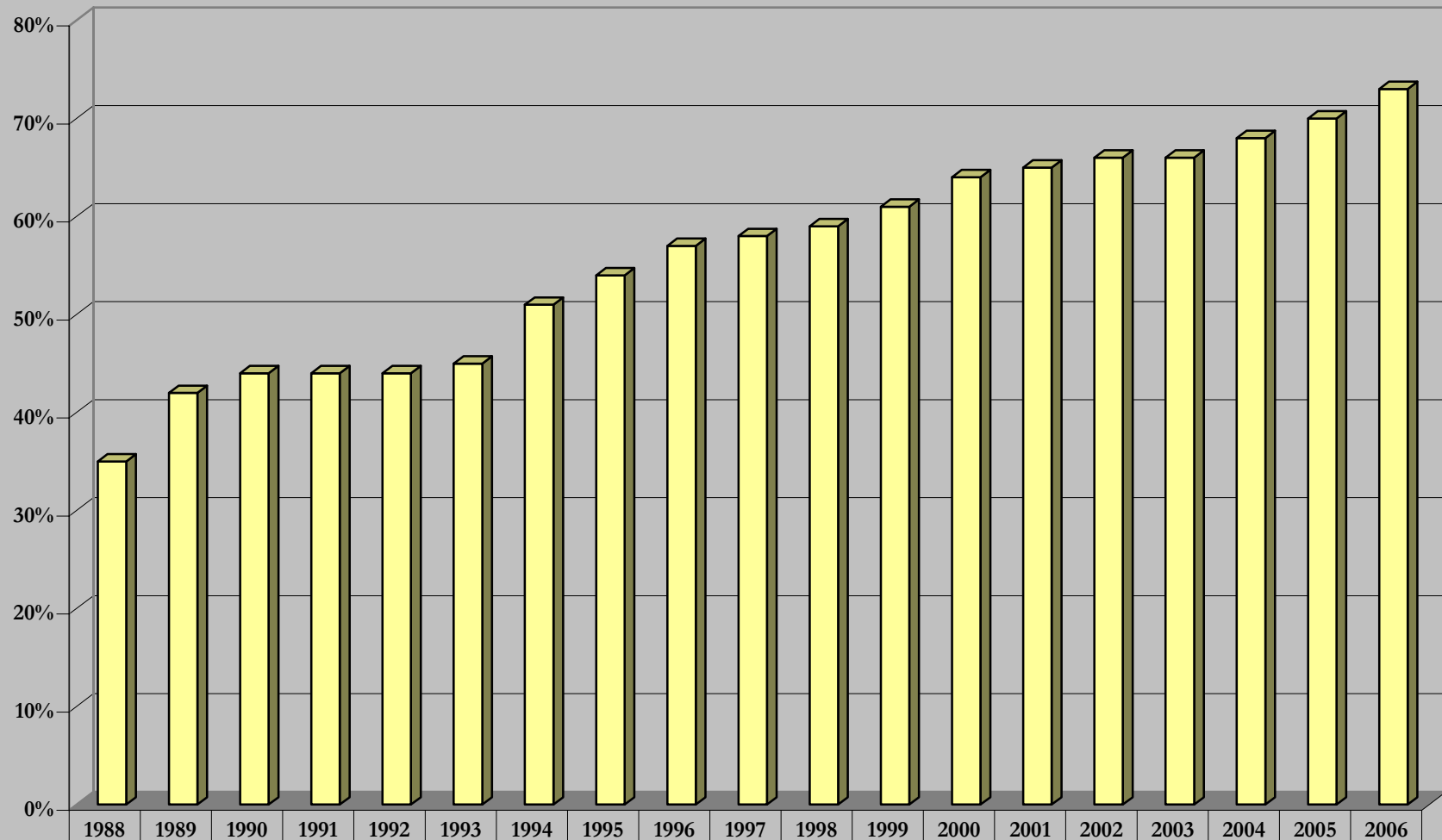
## Statewide District and Superior Courts - Adult New Risk/Need Substance Abuse Risk



■ Series1

1988	1989	1990	1991	1992	1993	1994	1995	1996	1997	1998	1999	2000	2001	2002	2003	2004	2005	2006
65%	63%	66%	68%	70%	72%	76%	78%	79%	80%	80%	81%	82%	83%	83%	83%	84%	85%	86%

## Statewide District and Superior Courts - Adult New Risk/Need Drug Need



Series1

1988

1989

1990

1991

1992

1993

1994

1995

1996

1997

1998

1999

2000

2001

2002

2003

2004

2005

2006

35%

42%

44%

44%

44%

45%

51%

54%

57%

58%

59%

61%

64%

65%

66%

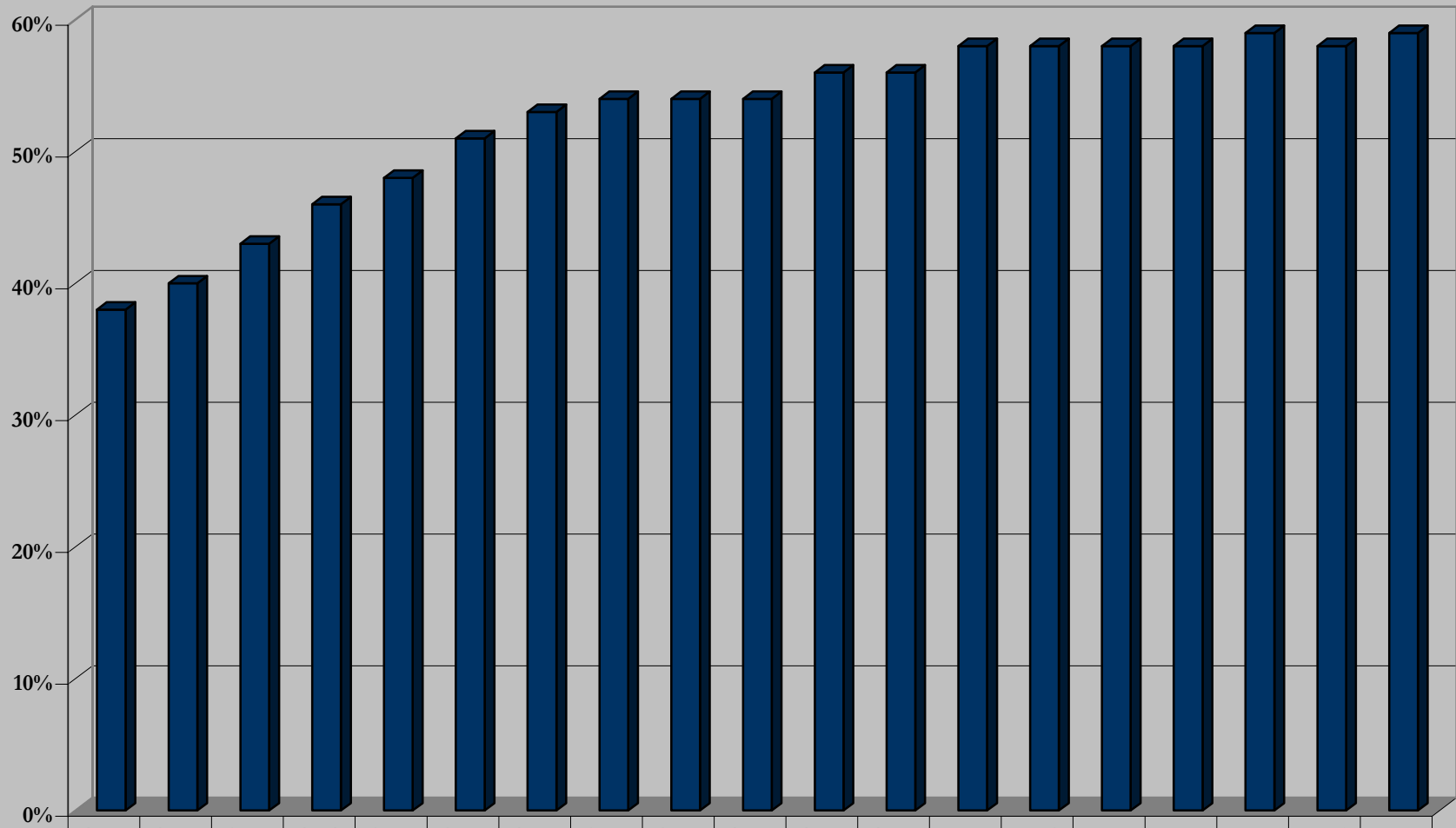
66%

68%

70%

73%

### Statewide District and Superior Courts - Adult New Risk/Need Alcohol Need



■ Series1	38%	40%	43%	46%	48%	51%	53%	54%	54%	54%	56%	56%	58%	58%	58%	58%	59%	58%	59%
-----------	-----	-----	-----	-----	-----	-----	-----	-----	-----	-----	-----	-----	-----	-----	-----	-----	-----	-----	-----