

# Storrow Drive Tunnel Reconstruction Project



Landscape Advisory Committee Meeting  
January 31, 2007

# Outline

- Origin / Destination Survey Results



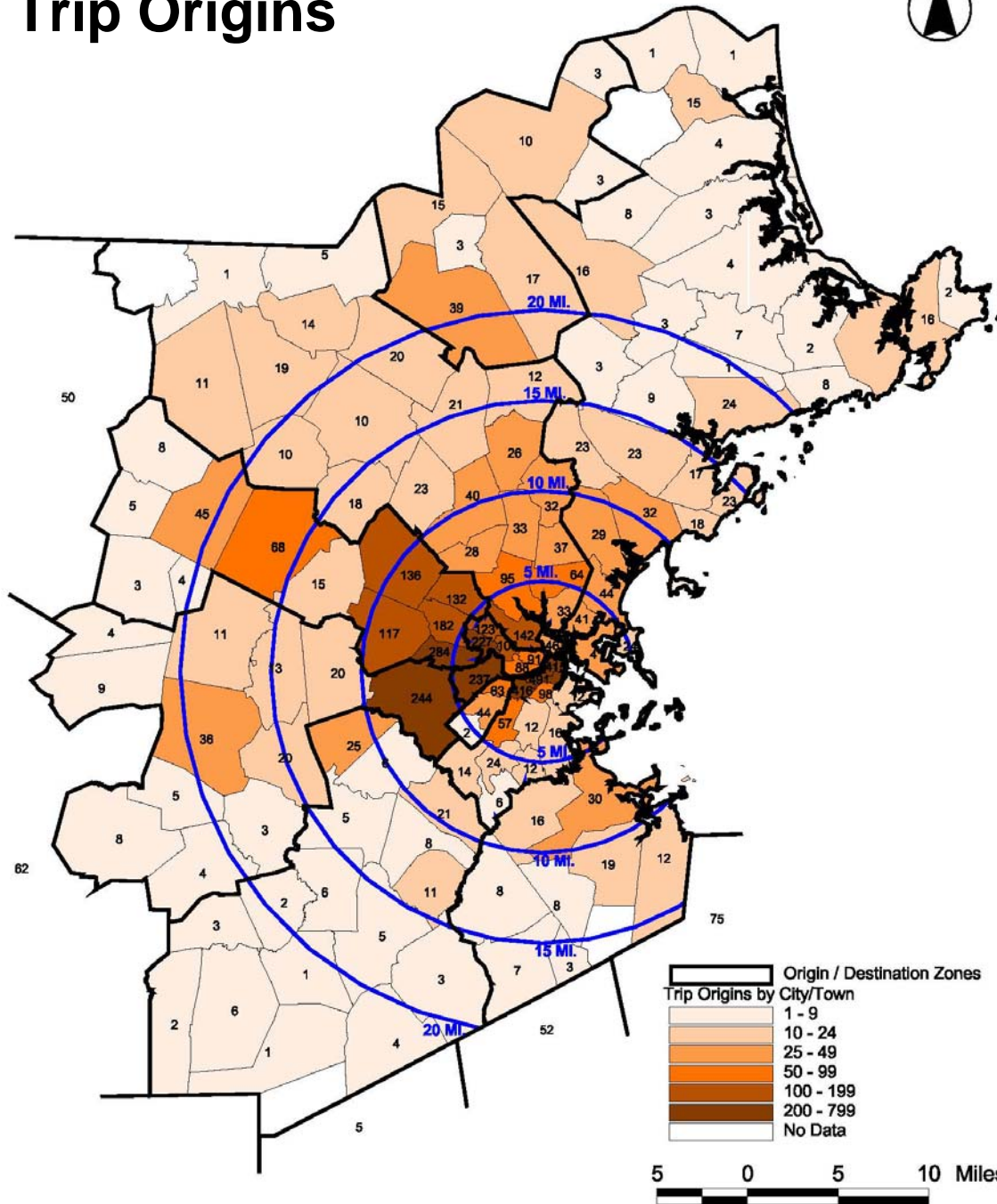
# Origin / Destination Survey

- Introduction
  - Conducted in Late April 2006
  - Distributed Approximately 40,000 Surveys
  - Approximately 7,800 Surveys Returned (20% Return Rate)

# Origin / Destination Survey

- The data show that a majority of the trips originate in either Middlesex County (West) or Essex County (North).
- Storrow Drive provides regional access to the local roadway network.
- A majority of the respondents use Storrow Drive on a daily basis.

# Trip Origins



# Origin / Destination Survey

- A majority of the trips that utilize Storrow Drive also utilize these other major roadways in the region:
  - I-93 (From the North and South)
  - The Mass Turnpike
  - Fresh Pond Parkway
  - Route 1
  - McGrath / O'Brien Highway
  - Soldiers Field Road

# Origin / Destination Survey



- A majority of the trips that utilize Storrow Drive are destined for the following locations within Boston:
  - Longwood Medical / Fenway Area
  - Back Bay
  - Beacon Hill
  - West End
  - Cambridge
  - South End

# O-D MATRIX

Question 5 - Where Did You **Exit** Storrow Drive?

Question 4 - Where Did You **Enter** Storrow Drive?

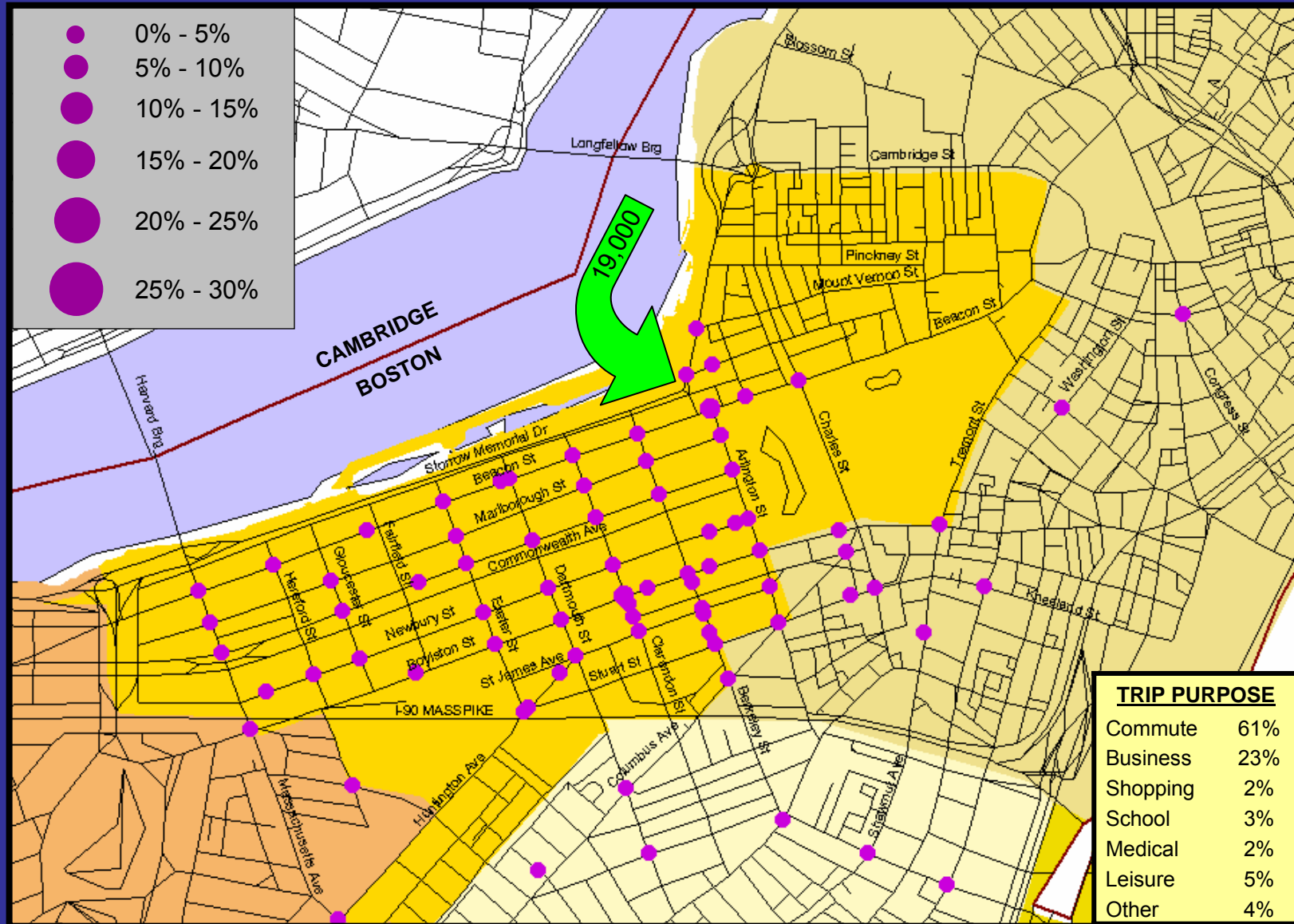
	Leverett Circle	Leverett Connector To I-93 North	Charles Circle	Arlington St.	Clarendon St / Copley Square	Mass Ave.	Charlesgate / Fenway	Boston University	Cambridge St. / Mass Turnpike	Western Ave.	North Harvard St.	Soldiers Field Road	Fresh Pond Parkway	Greenough Blvd.	Memorial Drive	Sum of All Entering Trips	Sum of Feasible Entering Trips
Leverett Circle	38	19	30	112	67	21	229	37	68	24	19	151	36	41	12	904	762
Leverett Connector From I-93	20	65	47	134	103	41	214	66	53	31	24	110	25	23	13	969	735
Charles Circle	35	33	14	15	9	1	39	5	36	6	6	56	33	7	7	302	241
Arlington St	34	42	34	6	8	5	14	2	8	1	2	11	11	3	2	183	110
Berkeley St	74	100	60	22	21	20	30	8	41	23	22	83	71	28	10	613	562
Charlesgate / Fenway	164	148	85	34	13	8	15	1	72	17	24	125	100	33	26	865	841
Boston University	77	89	41	23	18	6	7	3	13	2	3	7	10	0	9	308	255
Cambridge St. / Mass Turnpike	62	53	108	23	37	17	74	32	26	7	11	32	28	7	19	536	493
Western Ave.	17	21	19	7	17	3	20	8	13	4	3	35	17	13	5	202	195
North Harvard St.	10	12	14	17	11	3	26	9	13	6	6	13	12	3	4	159	150
Soldiers Field Road	116	74	138	92	99	15	146	54	66	31	14	23	11	4	15	898	860
Fresh Pond Parkway	71	32	89	78	107	14	164	73	59	9	8	4	12	0	2	722	696
Greenough Blvd.	31	13	32	31	24	3	53	20	10	7	3	0	0	3	2	232	226
Memorial Drive	11	15	15	17	19	9	40	13	13	3	1	16	4	2	4	182	169
Sum of All Exiting Trips	760	716	726	611	553	166	1,071	331	491	171	146	666	370	167	130	7,075	6,295
Sum of Feasible Exiting Trips	722	618	712	583	345	83	1,042	209	444	164	135	625	337	161	115	6,295	

 The Entrance Location = The Exit Location (Not Feasible)  
 Travel Between the Entrance and the Exit is Not Feasible

No Response to Q4 or Q5: 22  
 Provided Exit Location only: 66  
 Provided Entrance Location Only: 107  
**Total: 7,270**

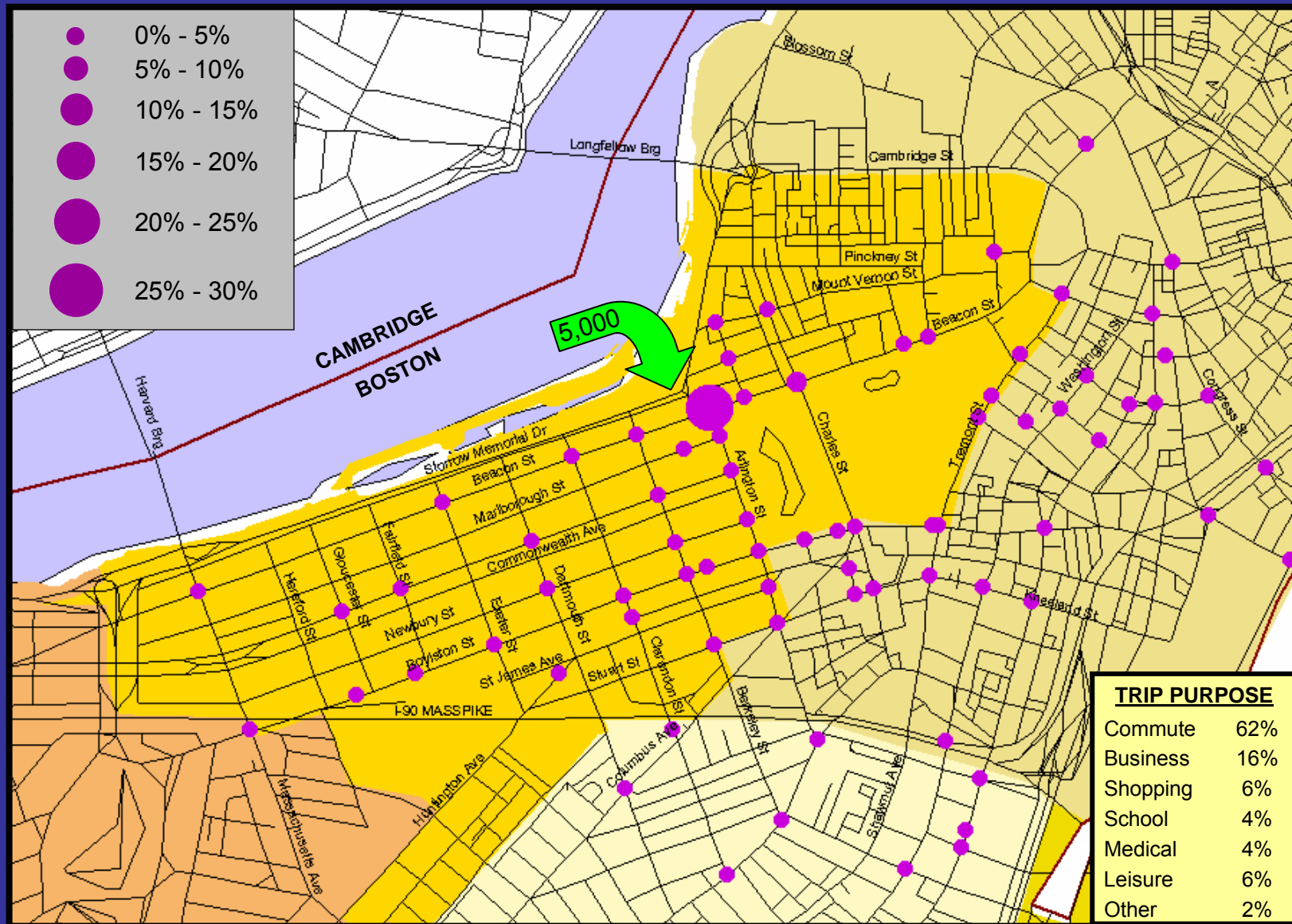
# Destination Points

## Arlington Street WB Off-Ramp

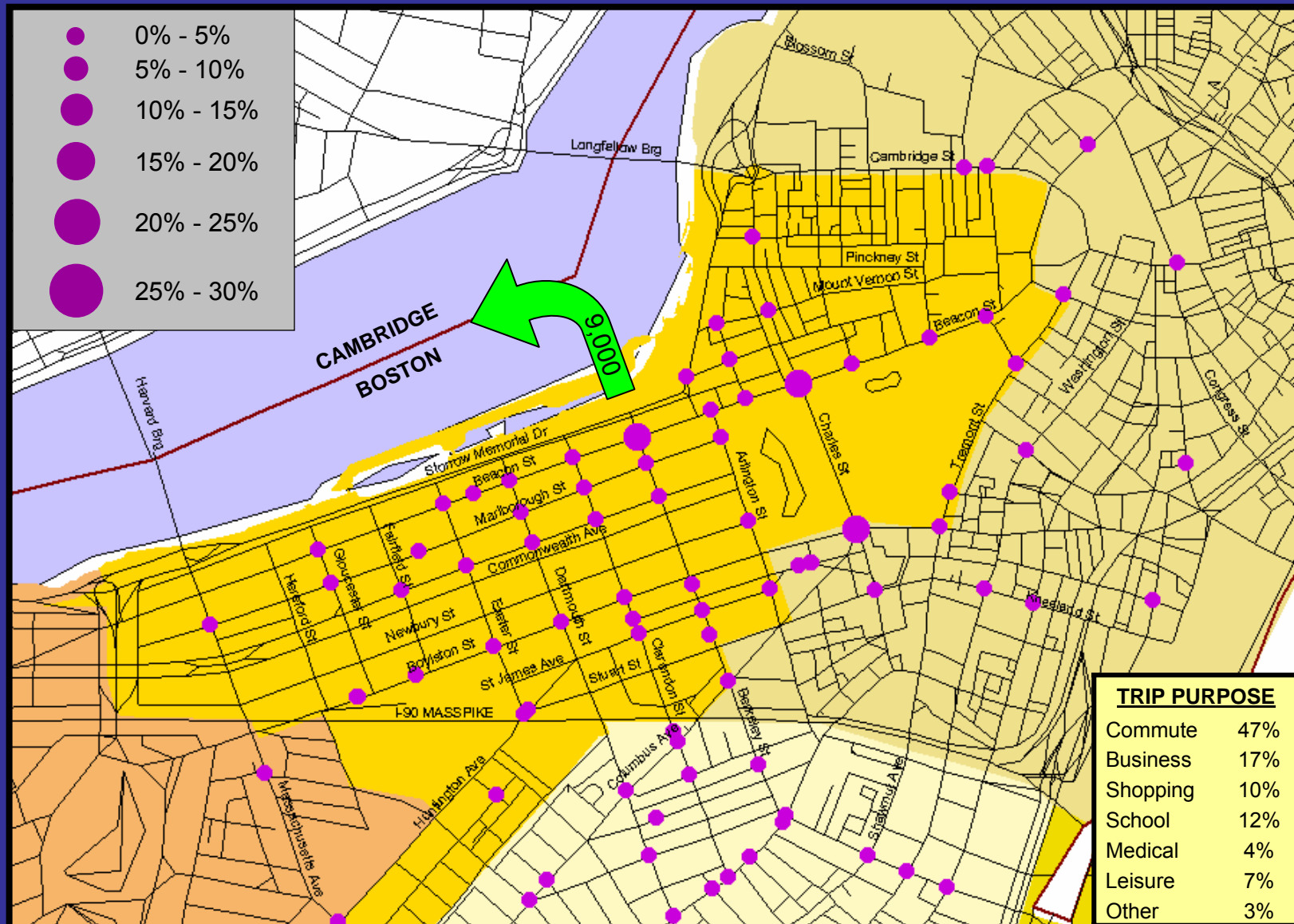




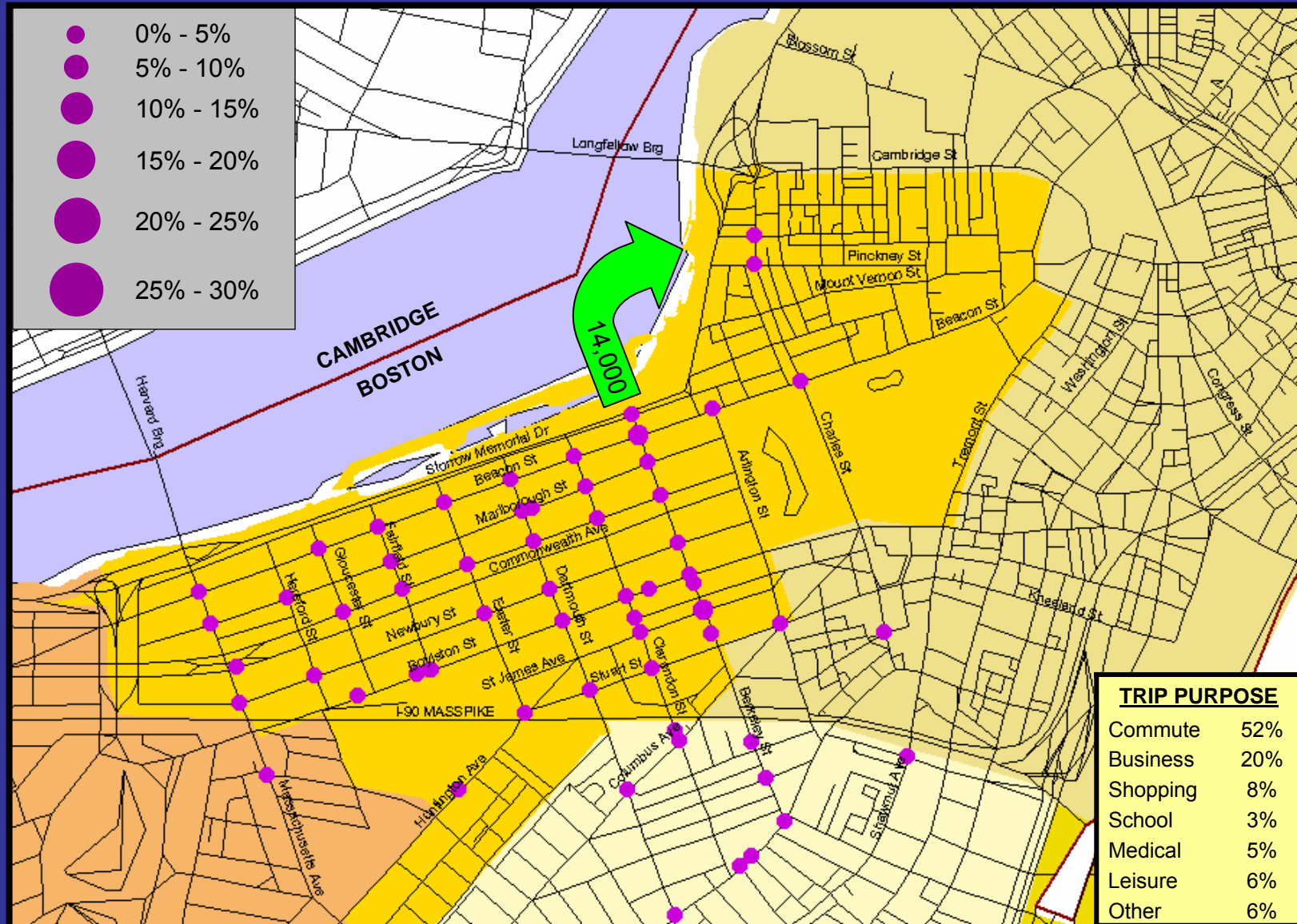
# Destination Points Arlington Street EB Off-Ramp



# Origin Points Berkeley Street WB On-Ramp

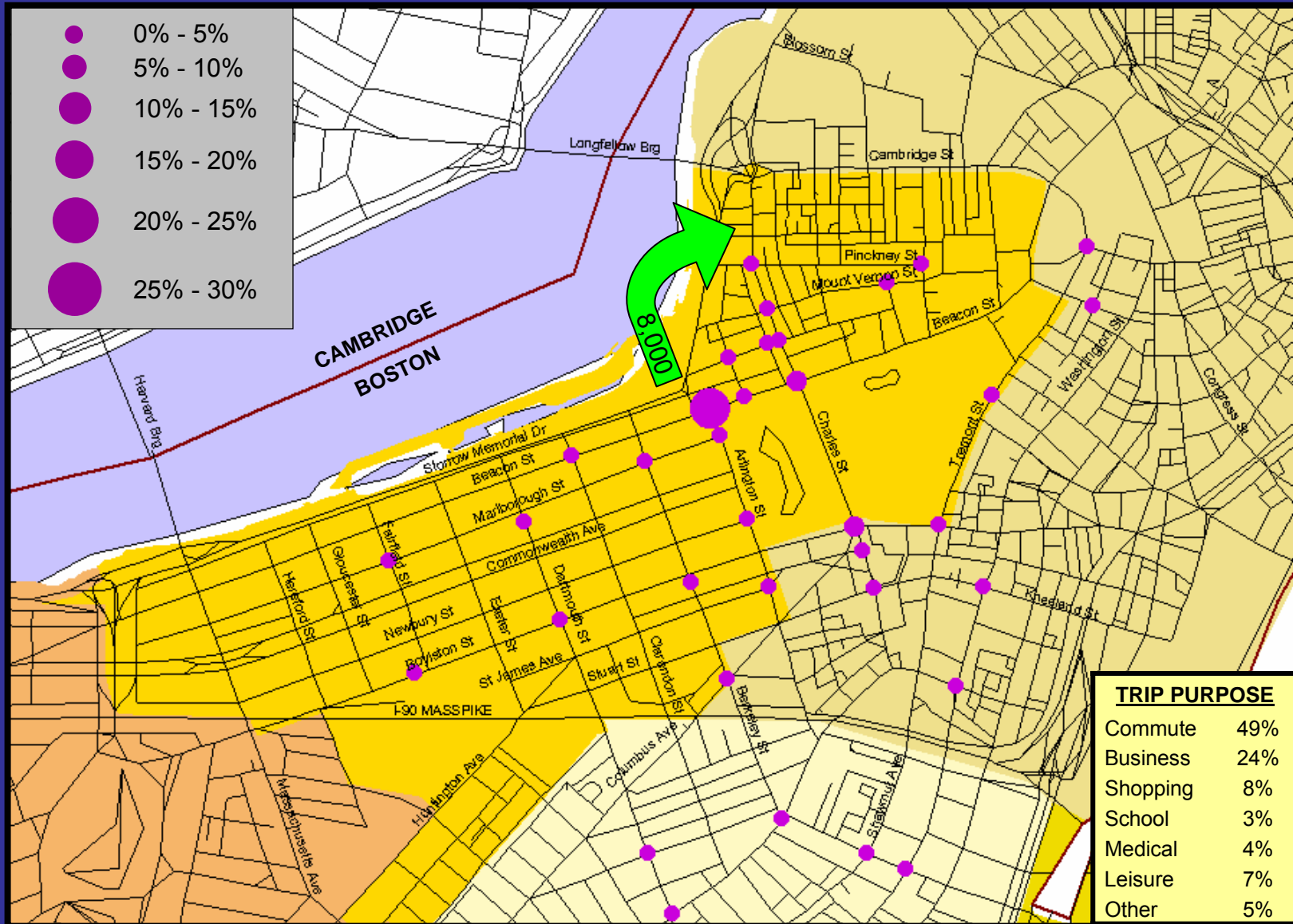


# Origin Points Berkeley Street EB On-Ramp



# Origin Points

## Arlington Street Eastbound On-Ramp



# Questions

