



Rehabilitation of the Neponset River Bridge – Phase II



DCR Public Meeting

April 27, 2009, 6:30 – 8:00 pm
Port Norfolk Yacht Club



Commonwealth of Massachusetts

Governor

Deval L. Patrick

Lieutenant Governor

Timothy Murray

Energy and Environmental Secretary

Ian A. Bowles

Department of Conservation and Recreation Commissioner

Richard K. Sullivan, Jr.

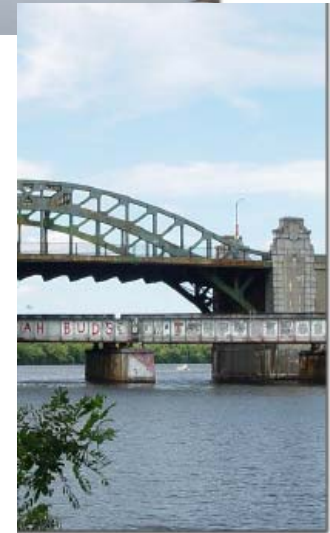


DCR Mission Statement

*To protect, promote and enhance our
common wealth of natural, cultural
and recreational resources.*

Accelerated Bridge Program Overview

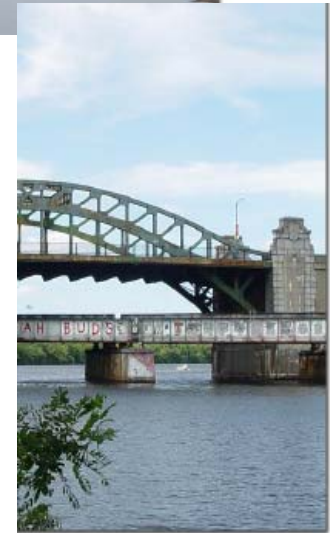
- Authorization:
 - C. 233 of the Acts of 2008
- Program Goals:
 - Improve the condition of the Commonwealth's bridges
 - Stimulate economic development and job creation
 - Save money by completing projects sooner
 - Complete projects efficiently and innovatively
 - Transparency and accountability



Accelerated Bridge Program Overview

- Size and Scope
 - MassHighway: \$2.078 billion
 - Rehabilitation or replacement of 191 bridges
 - Preservation of 305 bridges
 - DCR: \$906 million
 - Rehabilitation or replacement of 29 bridges
 - Preservation of 50 bridges

Total Program: \$2,984,000,000



Design Consultant



About Dewberry

- 1,955 professionals in 32 services
- 40 locations in 18 states
- Boston Office since 1922
- Fully integrated A/E design services
- 50 engineers and architects

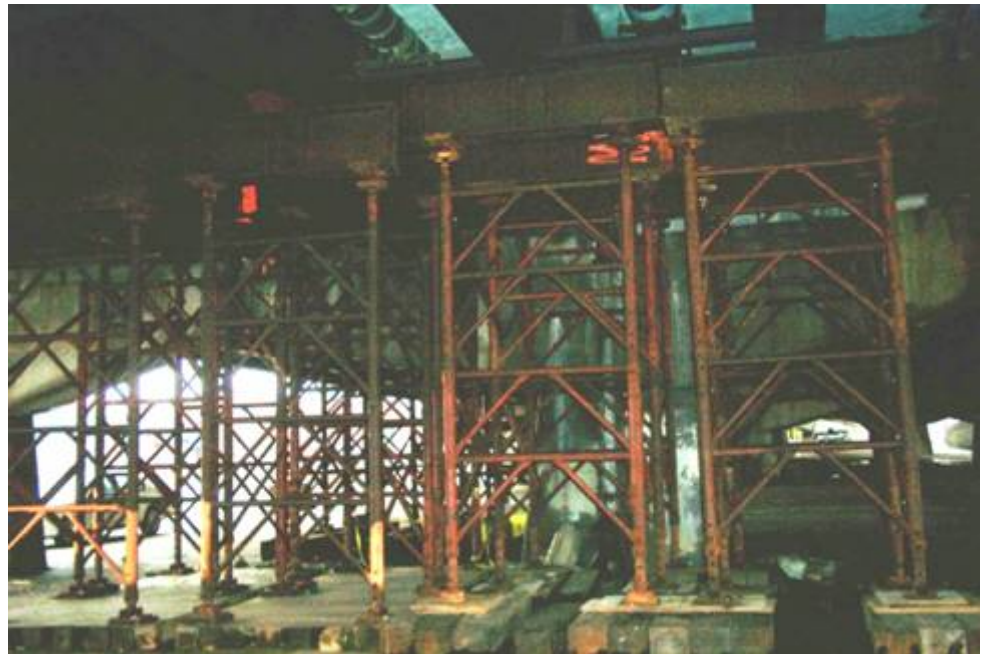


Neponset River Bridge

- DCR Owned Bridge
- Constructed in 1970
- 24 main spans + 3 Ramps
 - 3 lanes each way over river
 - 2 lanes each way to Quincy Shore Drive
 - 2 lanes on Hancock Street ramps
- MAJOR artery between Quincy & Boston
 - 64,600 Average Daily Traffic

Findings

- Concrete Piers
 - Poor Condition
 - Cracks
 - Spalls
- Steel Girders
 - Section Loss
 - Rust



Findings

- Bearings
 - Rusted
 - Cracked
 - Non-seismic



Phase I Construction

- Fix the Critical Items
 - Reconstruction of the Concrete Support Piers
 - New Bridge Bearing
 - Steel Repairs
 - New Downspouts
- All components designed for a 75 year service life



Phase I Construction

- Phase I Schedule
 - Started August 2006
 - Completion Anticipated August 2009
 - Estimated cost of \$20m
- Limited Traffic Impacts
 - All Work Below the Bridge
 - Nighttime Detours
 - Non-Rush Hour Single Lane Closures

Next Steps

- Bridge Deck
 - Deteriorated Concrete
 - Potholes
- Bridge Joints
 - Leaking all over
- Sidewalks
 - Non-ADA compliant, only 4'-4" wide
- Broken Lighting



Goals for Phase II

- Improve Public Safety
- Improve Pedestrian and Bicycle Access Between Boston & Quincy
- Improve the Aesthetics of the Bridge

Phase II Construction

- New Deck and Pavement
- New Joints
- New Lighting
 - Decorative Post & Fixture
 - DCR Parkway Standard
 - Will Also Be Used On Bridge & Approaches



Phase II Construction

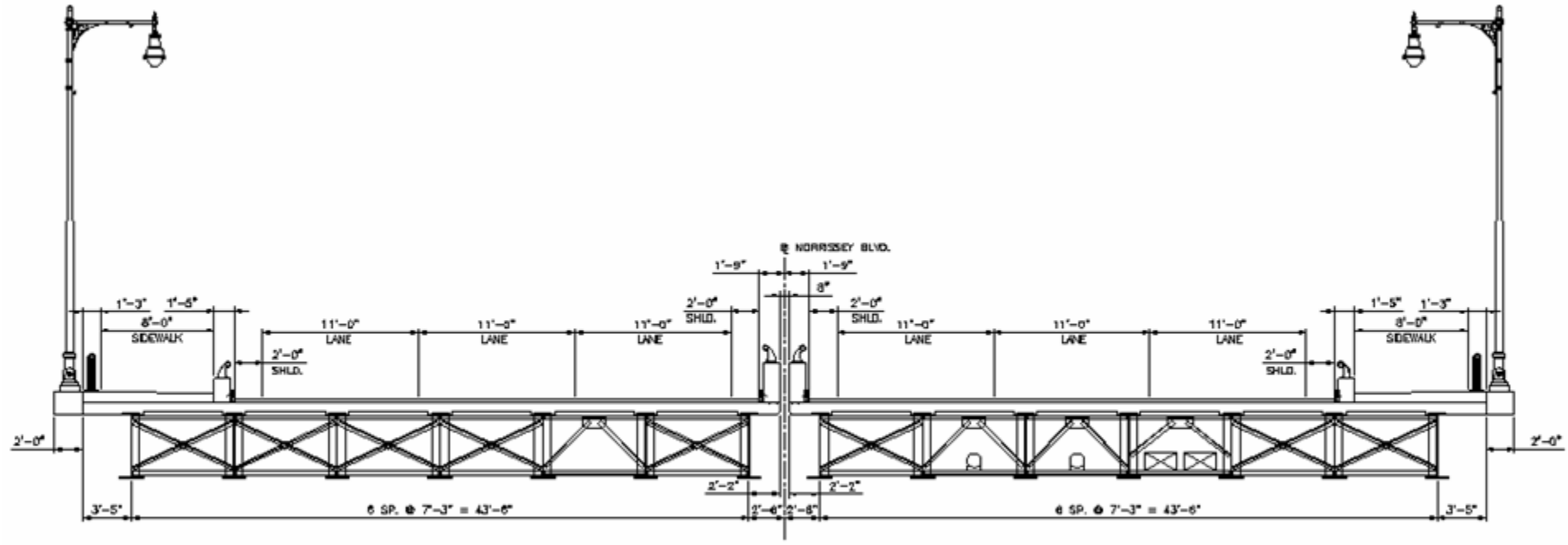
- New Railings
 - Metal Railing Along Sidewalks
 - Won't Block Views of River
 - Concrete parapet w/ Metal Rail Along Road



Phase II Construction

- New Sidewalks
 - 8'-0" width
 - Wide enough for both pedestrians and bicycles
 - New access ramp and sidewalk to replace stairs on Quincy side

Phase II Construction



TYPICAL THREE LANE SECTION
SCALE: 1/4" = 1'-0"

Phase II Construction

- Estimated construction cost of \$35m to \$40m
- Estimated Bid Date of April 2009
- Staging Area Below Bridge
- Major Traffic Impacts
 - Reduction in number of lanes

Traffic Management

Existing Capacity

- Main line
 - 3 lanes northbound & southbound
- Quincy Shore Drive Approach
 - 2 lanes northbound & southbound
- Hancock Street Ramps
 - 2 lanes each
- Quincy Loop Off Ramp
 - 1 lane

Traffic Management

During Construction

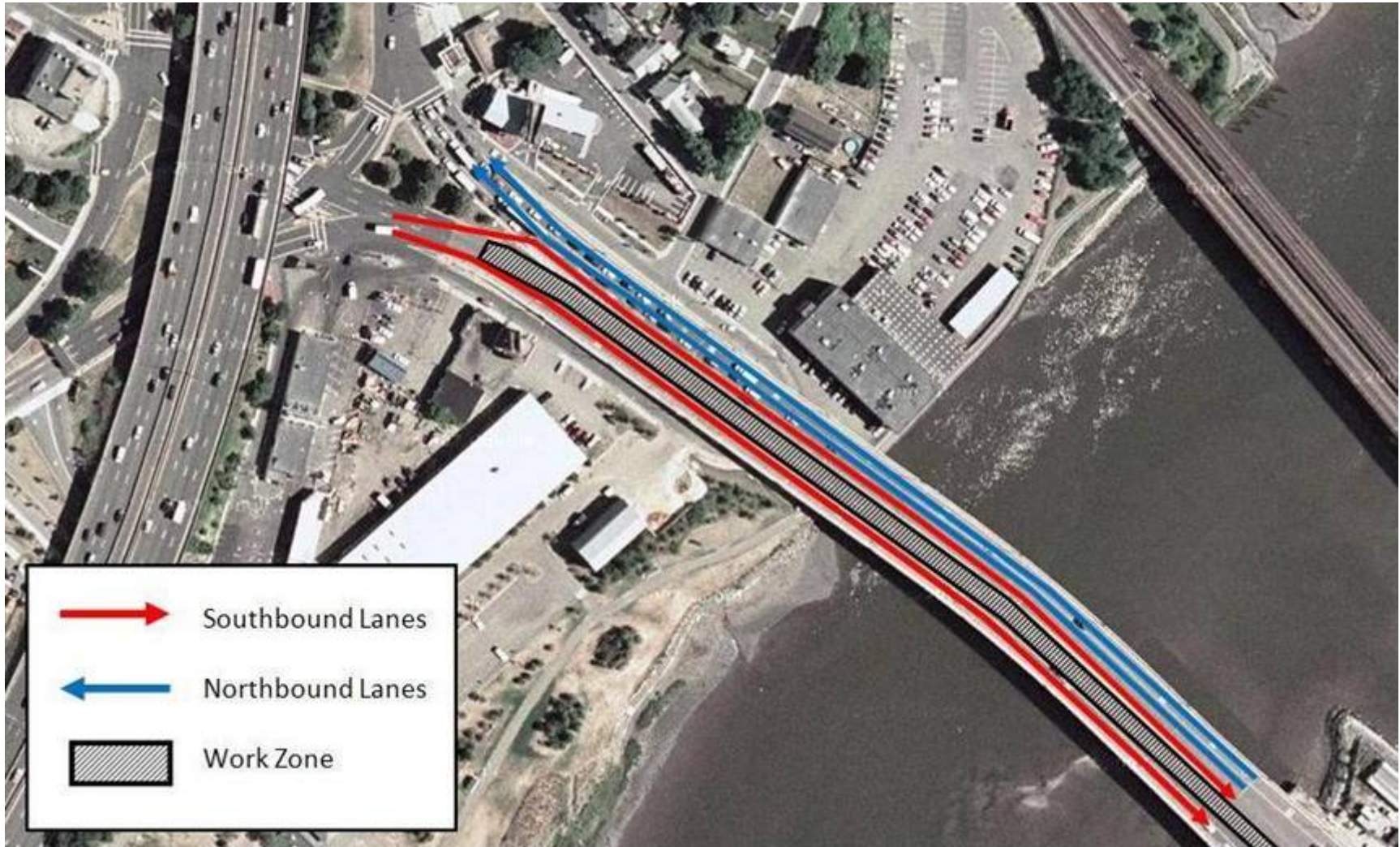
- Main line
 - 2 lanes northbound & southbound
- Quincy Shore Drive Approach
 - 1 lane northbound & southbound
- Hancock Street Ramps
 - 1 lane each
- Quincy Loop
 - 1 lane

Traffic Management

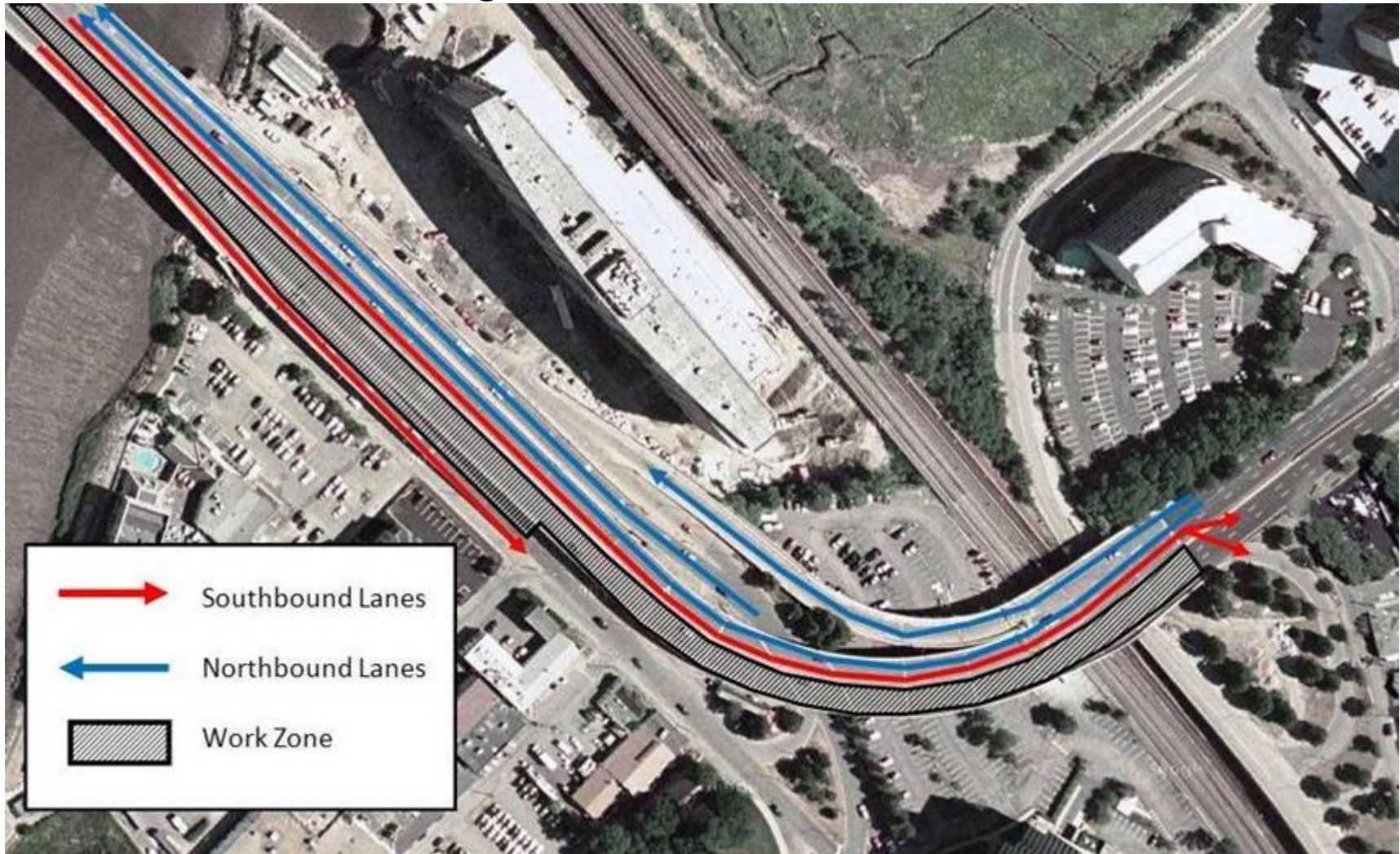
Four Construction Stages

- Estimated 36 months of impact to traffic
- Daytime work from 7AM to 4PM
- Will explore options to accelerate construction
- Some night work will be required when working over the MBTA; will be coordinated with MBTA
- Ramp to Commander Shea Blvd. may be closed during one phase
- Variable message boards will provide notice of lane restrictions; DCR will issue traffic advisories

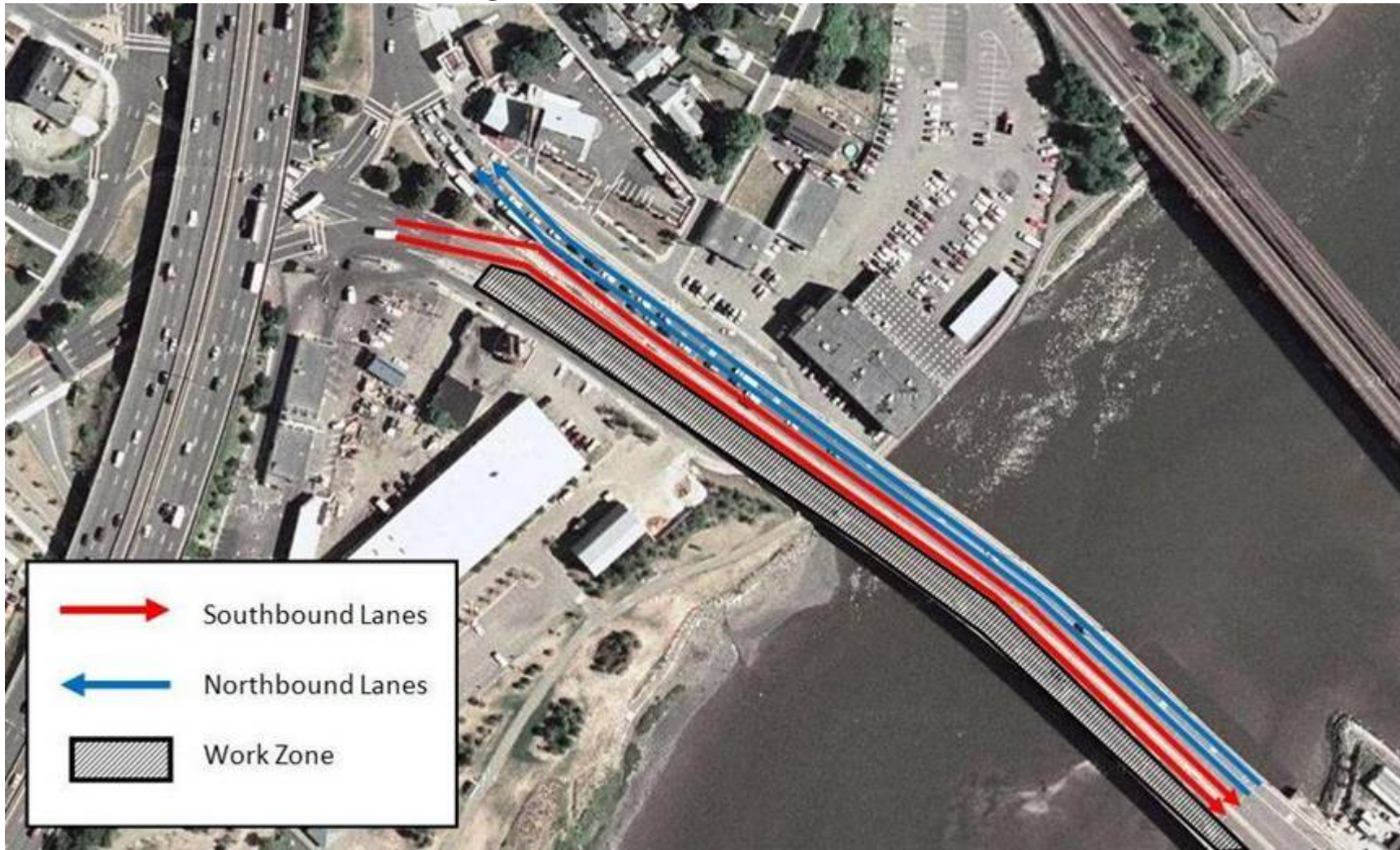
Stage 1A – North Section



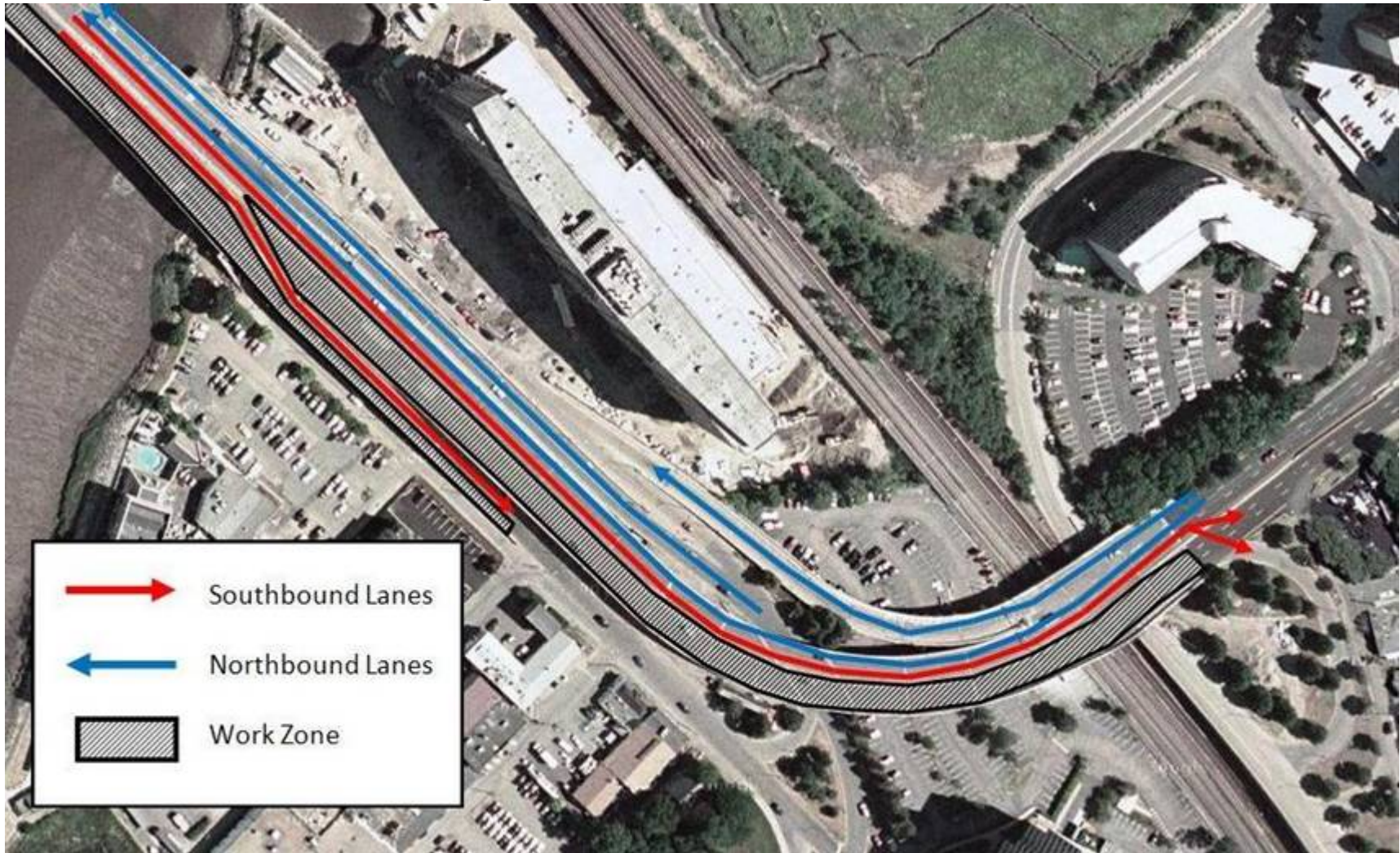
Stage 1A – South Section



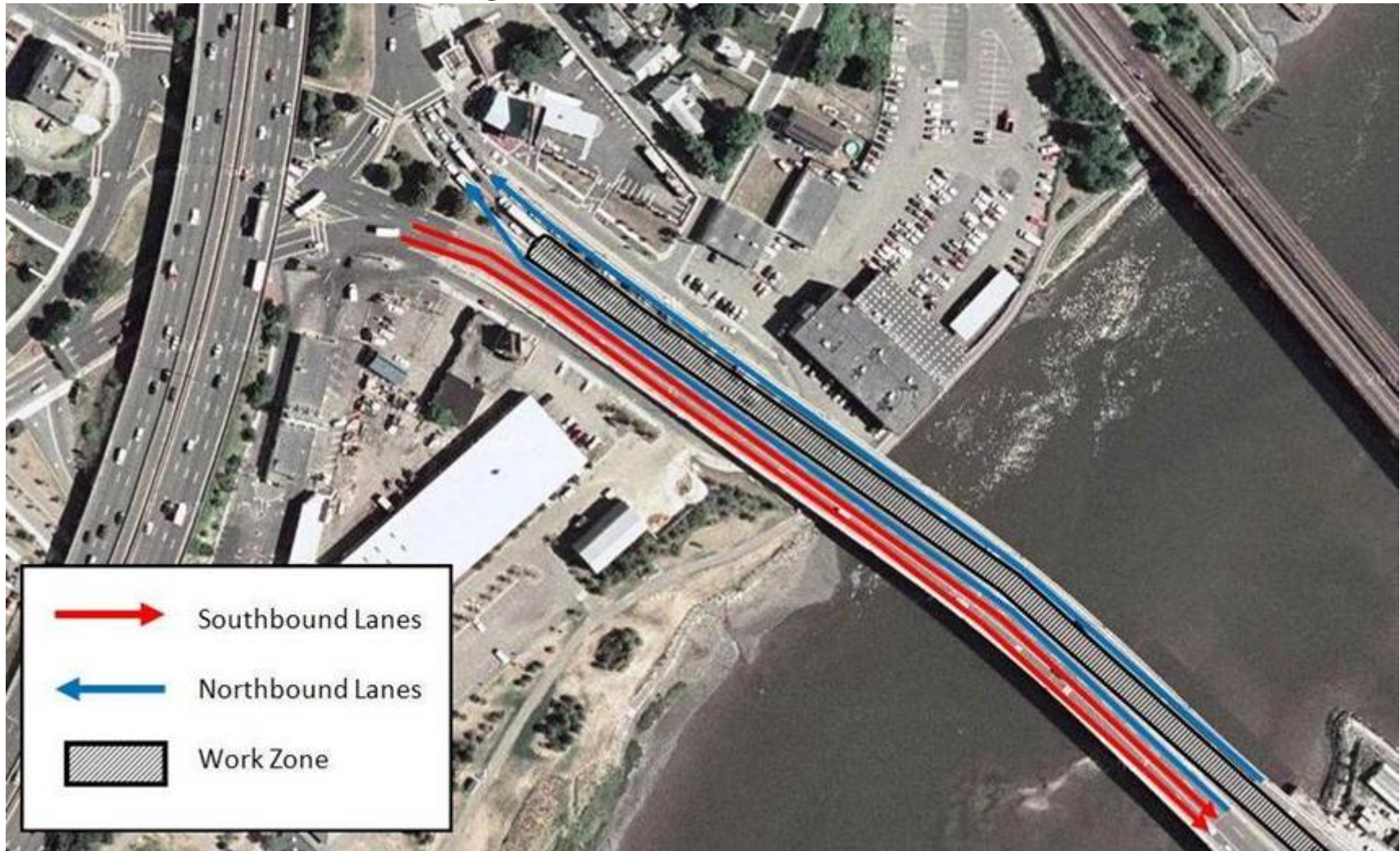
Stage 1B – North Section



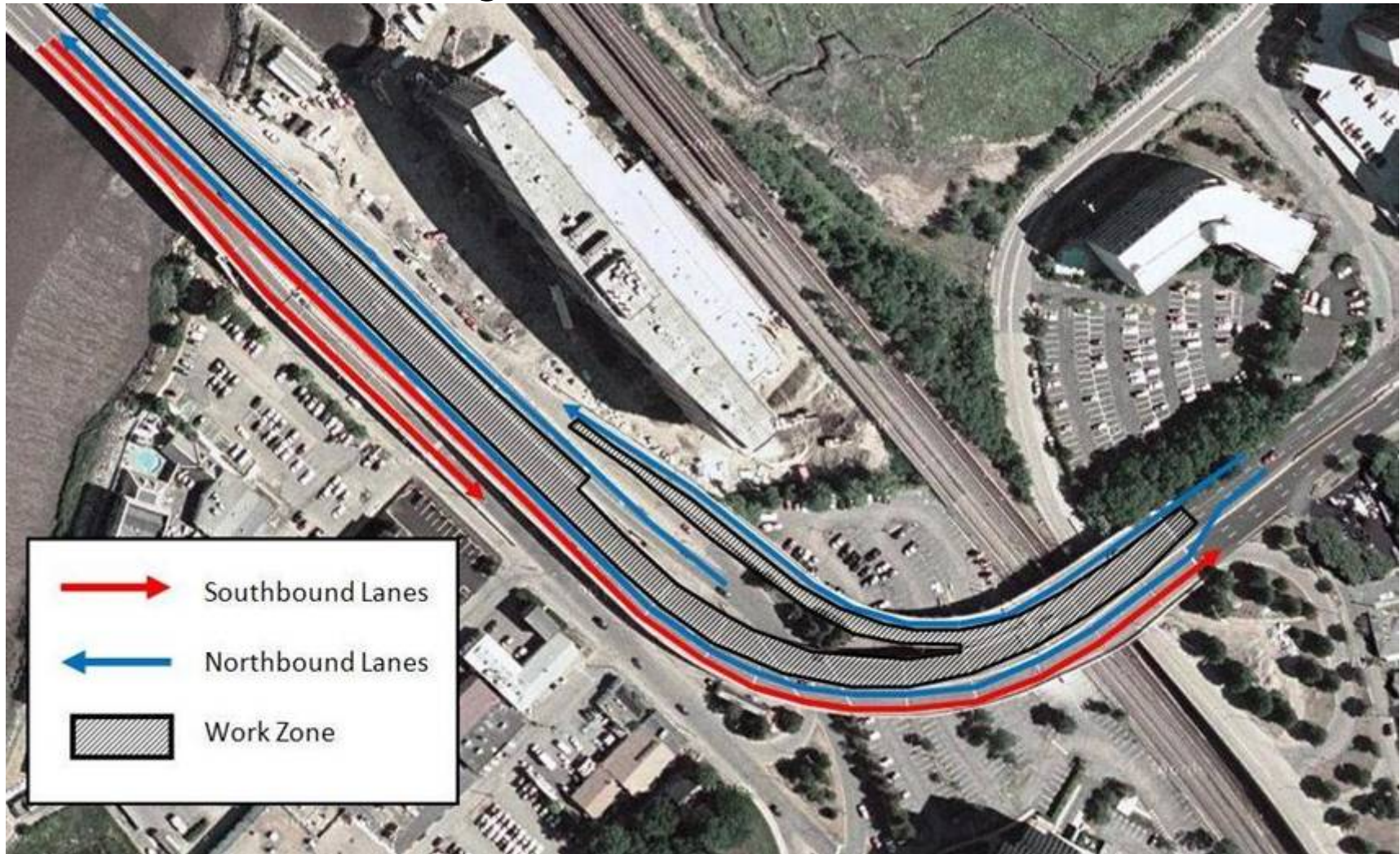
Stage 1B – South Section



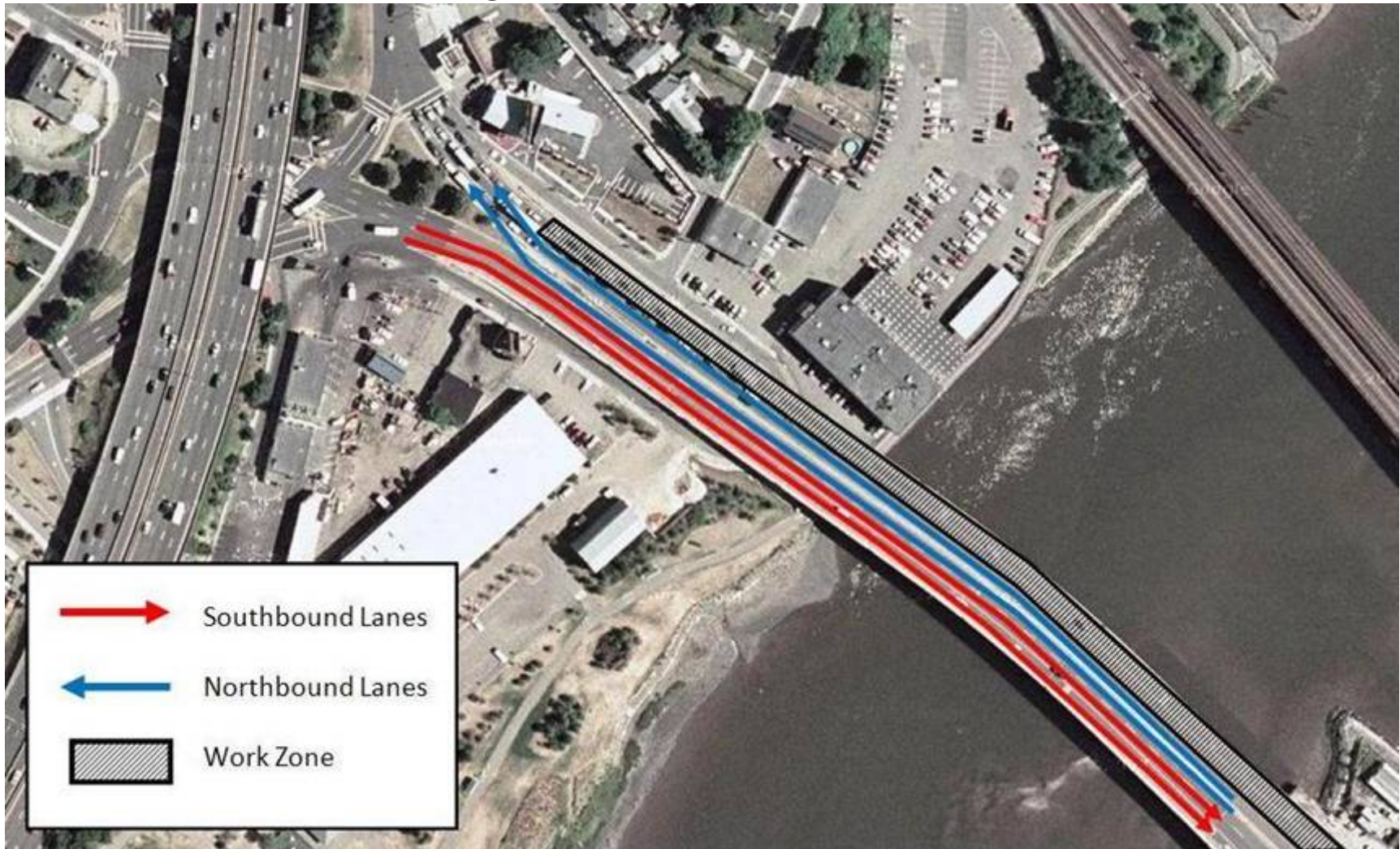
Stage 2A – North Section



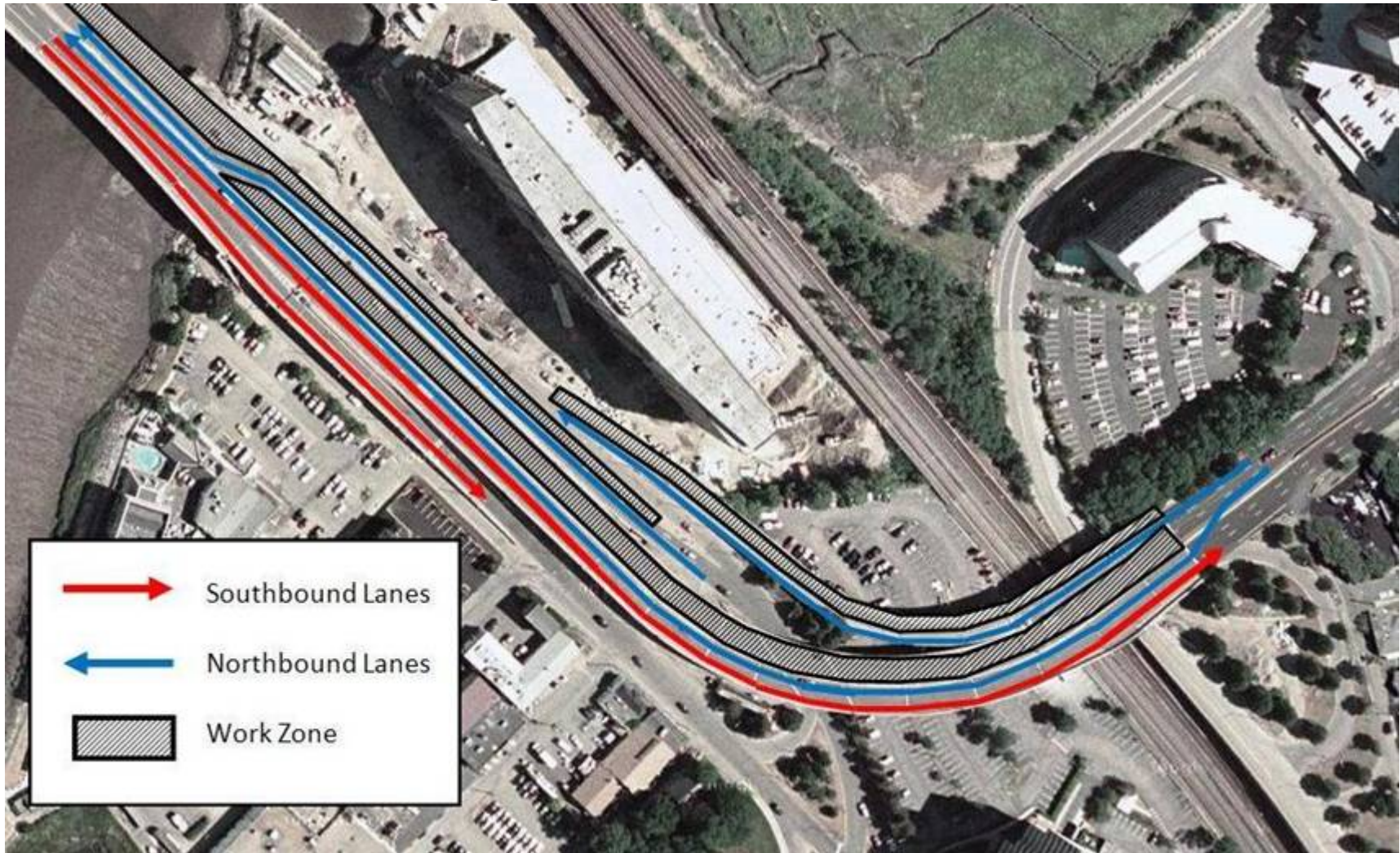
Stage 2A – South Section



Stage 2B – North Section




Stage 2B– South Section



Anticipated Schedule

Task	Duration	2009										2010											
		A	M	J	J	A	S	O	N	D	J	F	M	A	M	J	J	A	S	O	N	D	
Advertise	Apr '09	◆	◆																				
NTP	July '09			◆																			
Const. Duration	38 mo			◆	—————																		
Mobilization	2 mo				■	■																	
Stage 1A	8 mo					■	■	■	■	■	■	■	■										
Stage 1B	10 mo													■	■	■	■	■	■	■	■	■	
Stage 2A	8 mo																						
Stage 2B	10 mo																						

Anticipated Schedule

Task	Duration	2011												2012								
		J	F	M	A	M	J	J	A	S	O	N	D	J	F	M	A	M	J	J	A	S
Advertise	May '09																					
NTP	July '09																					
Const. Duration	36 mo																					
Mobilization	2 mo																					
Stage 1A	8 mo																					
Stage 1B	10 mo																					
Stage 2A	8 mo																					
Stage 2B	10 mo																					

Special Considerations

- Maintain Pedestrian Access Across River at All Times
- All Debris Will Be Contained
- Both Cities Noise Ordinance Will Be Followed
- Outreach Campaign To Abutters & Commuters

Special Considerations

- DCR Will Hold a Follow Up Public Meeting Once the Construction Contract Has Been Awarded and Prior to Construction Regarding Project Details, Including the Traffic Management Plan for the Project

Additional Information

If you have any questions, suggestions or concerns regarding this project or other DCR Accelerated Bridge Projects:

Email: DCR.Updates@state.ma.us

Phone: 617-626-4974

More information on the Accelerated Bridge Program:

Web: www.mass.gov/DCR

www.mass.gov/acceleratedbridges

Questions and Answers