

Cheney Bridge Rehabilitation Phase II

Dover/Wellesley



July 9, 2009, 6:30 – 8 pm
Elm Bank Reservation



Commonwealth of Massachusetts

Governor

Deval L. Patrick

Lieutenant Governor

Timothy Murray

Energy and Environmental Secretary

Ian A. Bowles

Department of Conservation and Recreation Commissioner

Richard K. Sullivan, Jr.

Accelerated Bridge Program Overview

- Authorization:
 - C. 233 of the Acts of 2008
- Program Goals:
 - Improve the condition of the Commonwealth's bridges
 - Stimulate economic development and job creation
 - Save money by completing projects sooner
 - Complete projects efficiently and innovatively
 - Transparency and accountability



Accelerated Bridge Program Overview

- Size and Scope
 - MassHighway: \$2.078 billion
 - Rehabilitation or replacement of 191 bridges
 - Preservation of 305 bridges
 - DCR: \$906 million
 - Rehabilitation or replacement of 29 bridges
 - Preservation of 50 bridges

Total Program: \$2,984,000,000

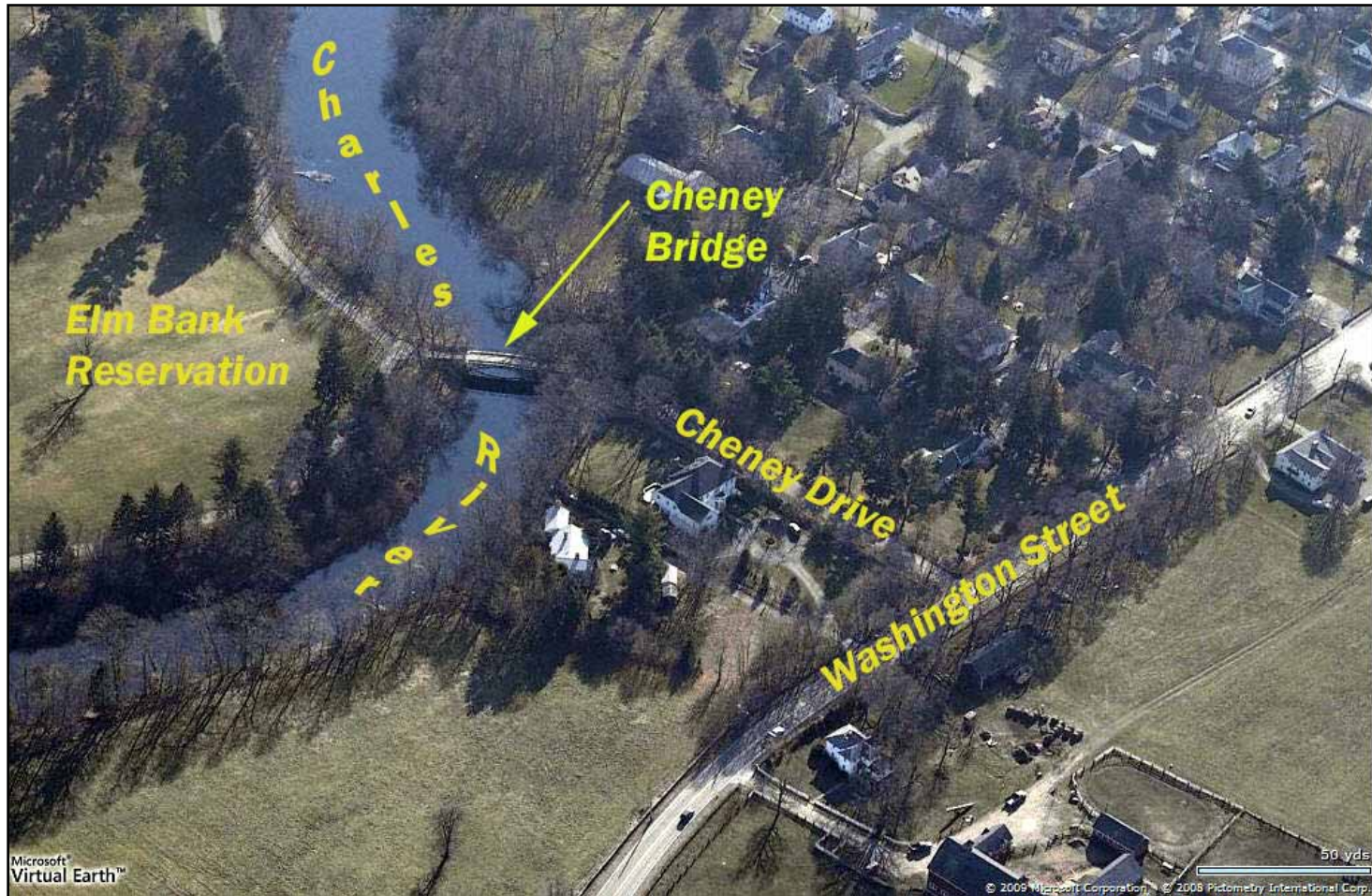


Cheney Bridge Rehabilitation Phase II

Consultant Design Team:
BETA Group, Inc.

Contractor:
Prime Coatings, Inc.

Cheney Bridge Location



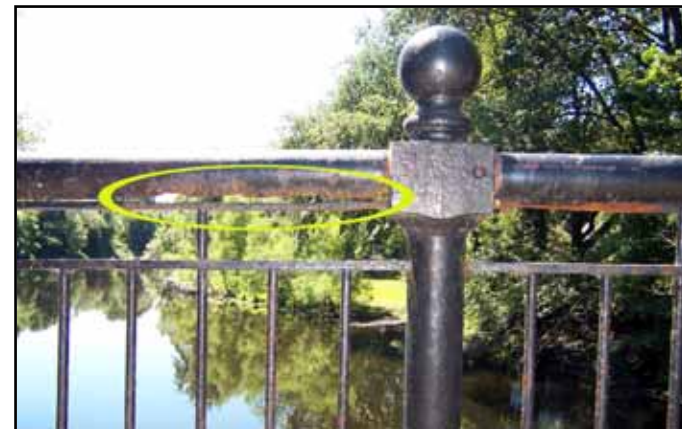
Cheney Bridge History

- Elm Bank Reservation
 - National Register of Historic Places
- Built in 1897
- Spandrel-Braced Three-Hinged Arch
- 60-Foot Span
- Owned by DCR
- Deck Replaced 2005



Findings

- Bridge Railing in Disrepair
- Arch & Framing Need New Coatings
- Light Posts & Luminaires Corroded and Not Functional
- Abutment Stones have Partial Mortar Loss



Findings

- West Approach Railing Missing
- Poor Drainage at West Approach



Considerations for Design

- Restoration to Match Original Structure
- Public Safety
- Improved Drainage

Scope of Restoration

- Restore Railing & Light Posts Off-Site
- Recoat Arch & Framing
- Replace Missing Mortar in Abutment Stonework
- Replica Luminaires
- New Electrical Service



Scope of Restoration

- West Approach
 - Clean and Adjust Catch Basin
 - Replica Approach Railing



Project Timeline

	June 2009		July 2009				August 2009					September 2009				Oct. 2009	
Week	21 st	28 th	5 th	12 th	19 th	26 th	2 nd	9 th	16 th	23 rd	30 th	6 th	13 th	20 th	27 th	4 th	11 th
Clean and Paint Metal Bridge																	
Restoration of Bridge Rail / Lighting																	
Cleanup																	

Special Considerations during Construction

- Traffic Management
- Environmental Mitigation
- Communication-Staying Informed

Traffic Management

- Work Activities on Bridge Deck Minimized
- Vehicular & Pedestrian Traffic Maintained at All Times
- Contractor Must Allow Crossing Within 5 Minutes of Request
- Charles River Passage Maintained for Small Watercraft



Environmental Mitigation

- Resource Protection
- On-Site Painting to have Full Containment System
- Dust Control Measures
- Proper Disposal of all Construction Materials



Staying Informed

- DCR is committed to sharing information on projects being undertaken as part of the Accelerated Bridge Program (ABP) by taking the following steps:
 - Staffing a dedicated phone line, where the public can call to register concerns, questions, or suggestions. The phone number is **617-626-4974**
 - Posting regular updates on DCR's website
 - Issuing press releases and traffic advisories, as appropriate
 - Sending announcements concerning projects, as well as traffic advisories over a listserve
 - Communicating via an email account, to which the public can write to register concerns, questions, or suggestions. The account is DCR.Updates@state.ma.us

Additional Information

- For more information
 - Web: www.mass.gov/dcr
 - Email: dcr.updates@state.ma.us
 - Phone: 617-626-4974
- For more information on Accelerated Bridge Program
 - Web: www.mass.gov/acceleratedbridges

Questions & Answers



DCR Mission Statement

*To protect, promote and enhance our
common wealth of natural, cultural
and recreational resources.*