

department of Conservation and Recreation



Jamaica Pond Pedestrian & Bicycle Access Enhancements

Eliot Street Crossing Boston, Massachusetts

PUBLIC MEETING

Tuesday, March 1, 2011

7:00 p.m. – 8:30 p.m.





Commonwealth of Massachusetts

Governor

Deval L. Patrick

Lieutenant Governor

Timothy Murray

Energy and Environmental Secretary

Richard K. Sullivan, Jr.

Department of Conservation and Recreation Commissioner

Edward M. Lambert, Jr.

Mission Statements

Department of Conservation and Recreation

"To protect, promote and enhance our common wealth of natural, cultural and recreational resources"

Emerald Necklace Conservancy

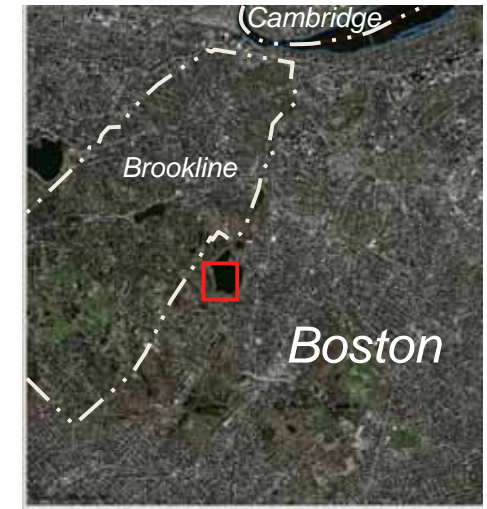
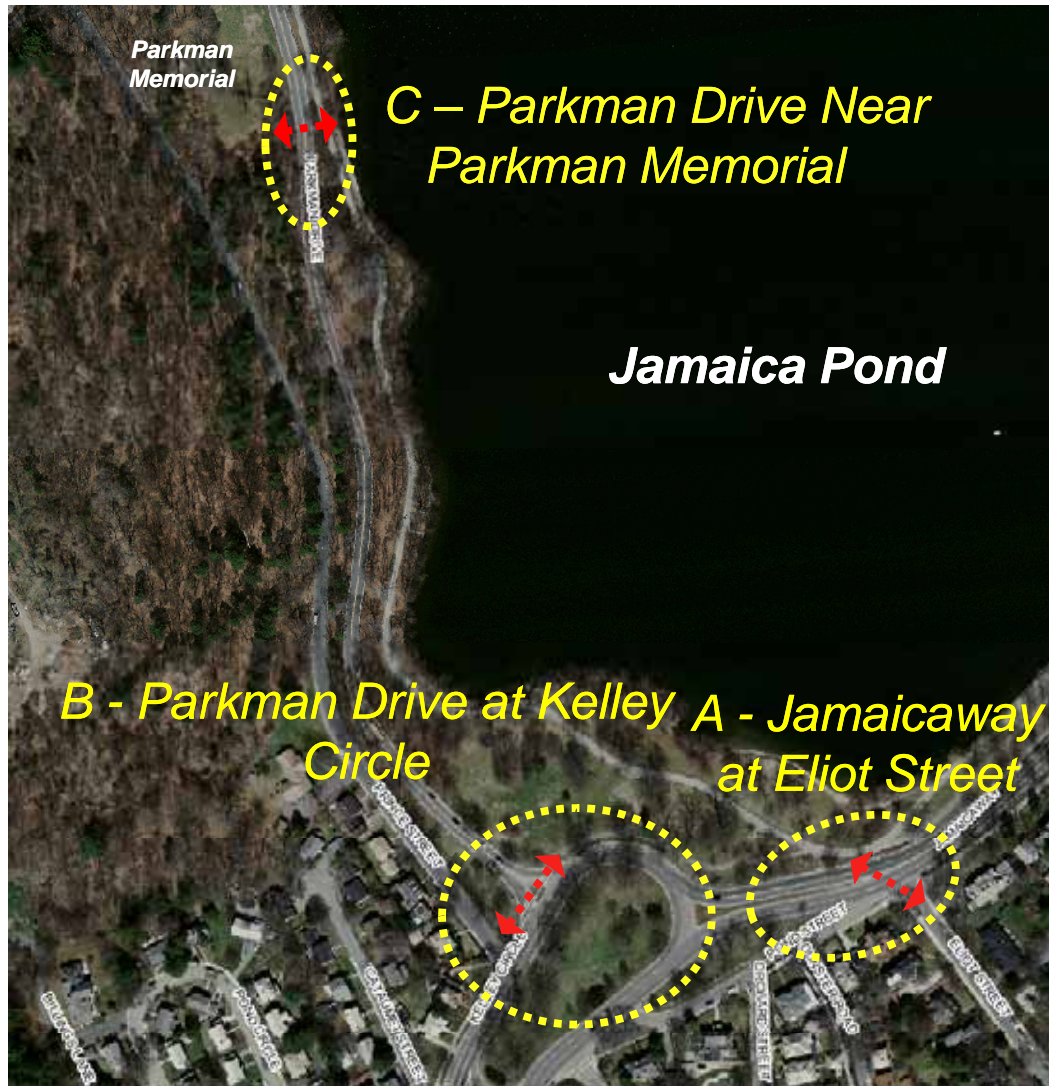
"To renew, enliven, and advocate for the Emerald Necklace park system"

Purpose of meeting

- Present an update on the Jamaica Pond Pedestrian and Bicycle Access Enhancements Project
- Provide information on construction plans for Eliot Street Crossing
- Outline next steps

Jamaica Pond Pedestrian and Bicycle Access Enhancements Project Goals

- Improve recreational access to Jamaica Pond
- Enhance pedestrian & bicyclist safety
- Calm traffic
- Preserve or increase greenspace



Jamaica Pond Pedestrian & Bicycle Access Enhancement Locations

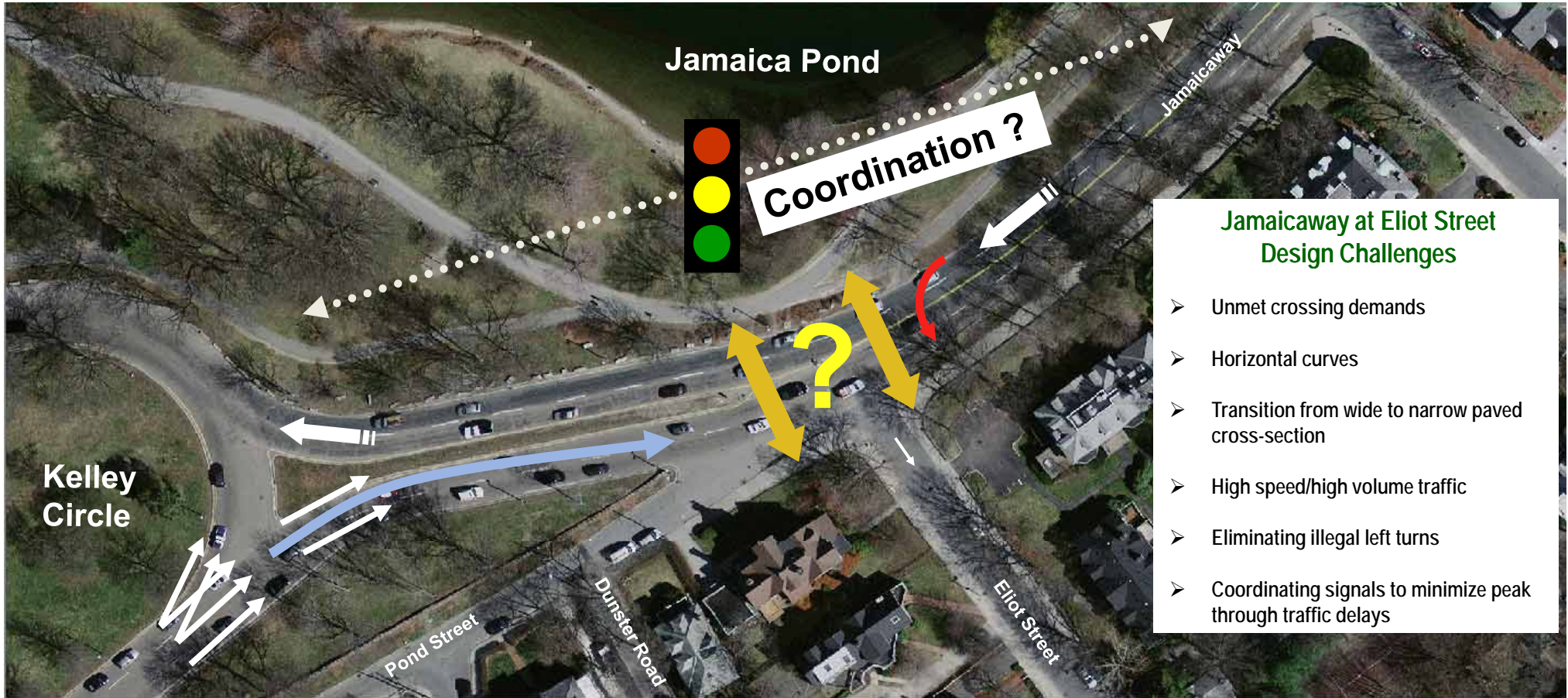
Project History/Status

- Develop/review concepts for three locations
 - 1ST Public Meeting - July 1, 2009
- Design/permit one Option for each location
 - Eliot Crossing (Base Bid) with other 2 locations as add alternates
 - 2ND Public Meeting – January 27, 2010
 - Permitting – July and August 2010
 - Boston Conservation Commission
 - Boston Landmarks Commission
 - Massachusetts Historical Commission

Project History/Status (cont.)

- Bidding process
 - Advertised October 3, 2010
 - Bid Opening October 22, 2010

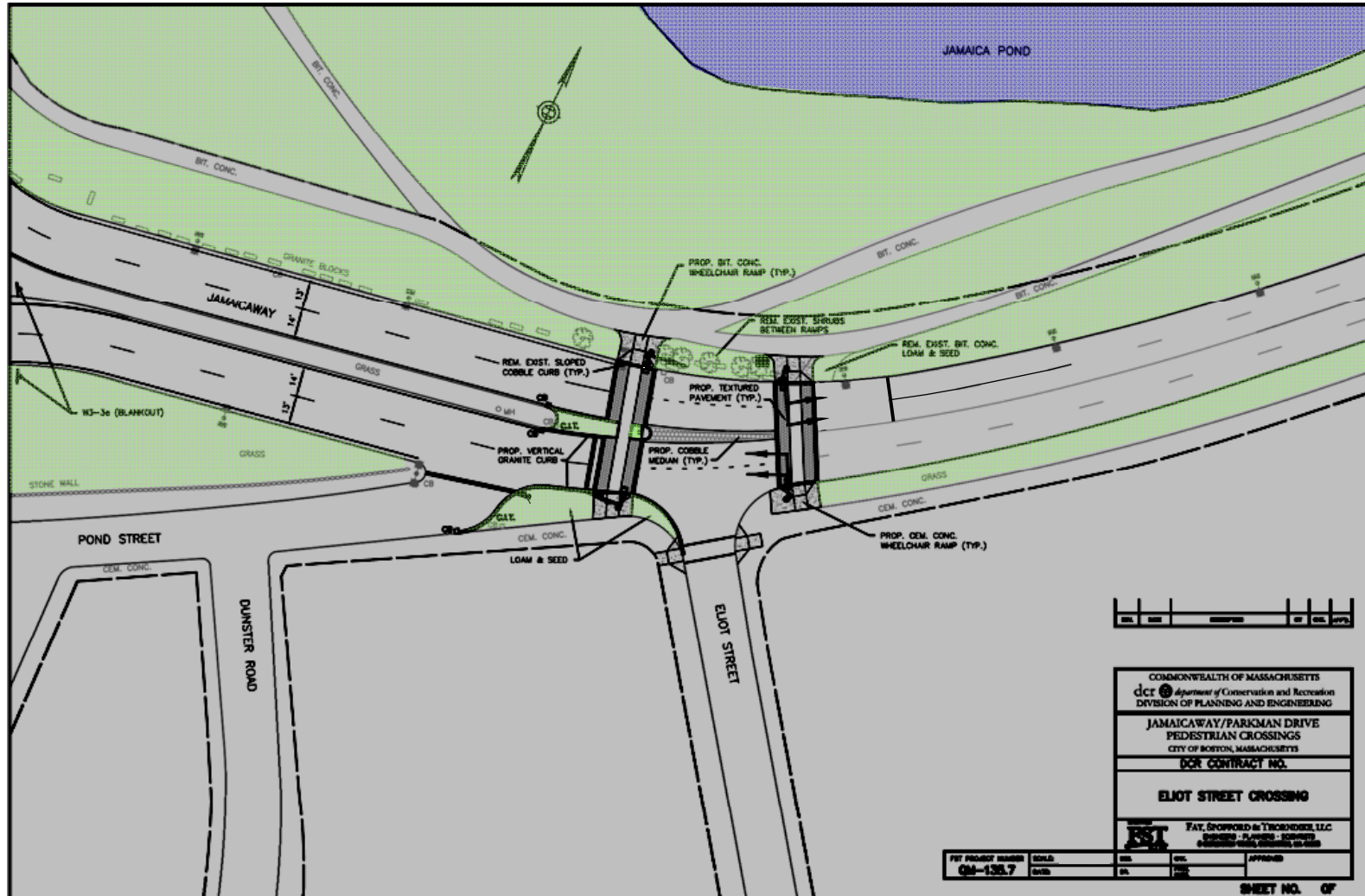
Location A: Jamaicaaway near Eliot Street Design Challenges



Jamaicaway at Eliot Street Design Challenges

- Unmet crossing demands
- Horizontal curves
- Transition from wide to narrow paved cross-section
- High speed/high volume traffic
- Eliminating illegal left turns
- Coordinating signals to minimize peak through traffic delays

Eliot Street Crossing – Plan View



Eliot Street Crossing – Project Features

- Installation of pedestrian actuated traffic signal including accessible pushbuttons, count-down pedestrian signals and ornamental signal poles
- Installation of blankout “Red Signal Ahead” signs in the eastbound direction
- Patterned pavement markings to enhance crosswalk visibility
- Signal coordinated with adjacent intersections during peak hours



Eliot Street Crossing -Project Features

- Curb relocation to define eastbound Jamaica way lanes better and shorten crossing
- Extension of median island including installation of mountable granite rubble
- Increased green space



Jamaica Pond Pedestrian & Bicycle Access Enhancements Boston, Massachusetts

Construction Contract Overview

- **Construction contract awarded November 2010**
 - **Coviello Electric and General Contracting**
- **Contract amount - \$290,000**
- **Construction period – spring 2011 to summer 2011**

Anticipated Construction Schedule

- Shop drawings/equipment submissions – January/February 2011
- Order/delivery of signal equipment – February to April 2011
- Construct sidewalk improvements – March to April 2011
- Install signal equipment – May to June 2011
- Final parkway paving – June 2011
- Signal fine tuning/adjustment – July 2011
- Project completed – August 2011

Considerations for Construction

- Traffic management
- Pedestrian and bicyclist - safety and access
- Noise abatement
- Environmental/vegetation Impacts
- Contractor operations

Traffic Management

- No work in roadway morning (7 AM to 9 AM) and afternoon peak (4 PM to 6 PM)
 - Maintain two lanes in each direction
 - Sidewalk improvements/off-road signal work
- Lane closures allowed 10 AM to 2 PM
 - One lane of traffic maintained in each direction at all times
 - Work in median/mast arm installation/conduit across roadway
- Periodic police details to be provided
- Advance warning signage
- DCR traffic advisories

Pedestrian and Bicyclists Safety and Access

- Access to all properties to be maintained
- During work hours, temporary walkways to be marked with drums/cones
- Walkways restored to walkable condition in non-work hours
- Handicapped access will be maintained

Noise Abatement

- Contractor typical work hours – 7 AM to 4 PM, Mon-Fri
- Equipment to have noise-suppression devices

Environmental/Vegetative Impacts

- Work outside 100 foot buffer zone for Jamaica Pond
- Sedimentation/erosion control plan
 - Install silt fence and haybales
 - Disturbed areas to be restored to pre-construction conditions through loaming and seeding
- No vegetation to be disturbed beyond limit of work

Contractor Operations

- Fenced-in laydown area at Kelley Circle
 - Layout will be coordinated with DCR
 - Site restored with loam and seed at project completion
- Temporary storage of new granite - Pond Street side/wall nearest Eliot Street (away for recently planted trees)
 - Tree protection, as needed
- Contractor parking – 3 to 5 cars on Pond Street during peak hours

Next Steps:

Eliot Street Crossing

- Contractor to begin work Mid-March 2011

Kelley Circle & Parkman Drive Crossing

- Pending future funding
- Prepare second bid package



Additional Information

For more information:

– Web:

<http://www.mass.gov/dcr/news/publicmeetings/parkwaysmaterials.htm>

If you have questions, concerns, or suggestions:

– Email: dcr.updates@state.ma.us

– Phone: 617-626-4974