

# South Boston Parking and Safety Plan

## Day Blvd, Shore Road, Castle Island



**May 19, 2011, 6:30 p.m. – 8:00 p.m.**  
**Curley Community Center, South Boston**



# Commonwealth of Massachusetts

Governor

**Deval L. Patrick**

Lieutenant Governor

**Timothy Murray**

Energy and Environmental Secretary

**Richard K. Sullivan, Jr.**

Department of Conservation and Recreation Commissioner

**Edward M. Lambert, Jr.**



## **DCR Mission Statement**

*To protect, promote and enhance our  
common wealth of natural, cultural  
and recreational resources.*

## Purpose of Meeting

To discuss *proposed* changes to parking on DCR's parkways in South Boston and inform the public regarding planned safety improvements.

# Goals and Objectives

- **Ensure public safety while balancing the needs of the residents and the recreational users**
- Clarify parking rules, regulations and signage along DCR's Day Blvd, Shore Road and parking lots;
- Improve public safety and reduce vandalism at DCR properties;
- Provide additional overnight parking to residents;
- Improve pedestrian safety through signage and enforcement.

# Overview of Proposed Plan

- Creates of over 300 new Resident Permit parking spaces;
- Maintains over 400 un-restricted parking spaces available from 7:00am to 10:00pm;
- Enhances pedestrian safety;
- Improves control over after-hour vandalism.

# Area Map

Overview

Day Boulevard Parking

Massachusetts Department of Conservation and Recreation



Not a Survey Document. May contain errors and omissions. April 2008 Image.  
Sources: DCR and MassGIS. Grid: Massachusetts State Plane Meters, NAD 1983. DN 2011-05.



# Public Safety Improvements

## Existing conditions from Kosciusko Circle to Castle Island

- 29 crosswalks on Day Blvd.
  - 6 have pedestrian signals
  - 10 have pedestrian signs alerting motorists
- 9 speed limit signs

# Public Safety Improvements

## Planned Improvements

- Evaluate and install additional high visibility pedestrian crossing signs at crosswalks on Day Blvd;
- Purchase and deploy 4 – 6 *in-roadway* pedestrian crosswalk signs;
- Install 8-10 additional speed limit signs on Day Blvd.

# Public Safety Improvements

- Improve driver/pedestrian sight lines on curved portion of the road.

Locations of concern:

- Corners on Day Blvd at Marine Park and East Broadway Extension;
- Portion of roadway at intersecting medians between Day Blvd and Columbia Road from I Street to Farragut Road.

# Parking Definitions for Plan

- Un-Restricted Parking

Parking from 7:00am -10:00pm

- Resident Permit Parking

Parking from 10:00pm to 7:00am

- No Parking

No parking anytime or as posted

# Other Definitions:

The following are geographic designations for our discussion:

- **“*South Side*”** is located on the beach/ocean side of the Boulevard;
- **“*North Side*”** is located next the grass median on the residential side of the road.

# Proposed Parking Changes

## Day Blvd. from Kosciusko Circle to O Street

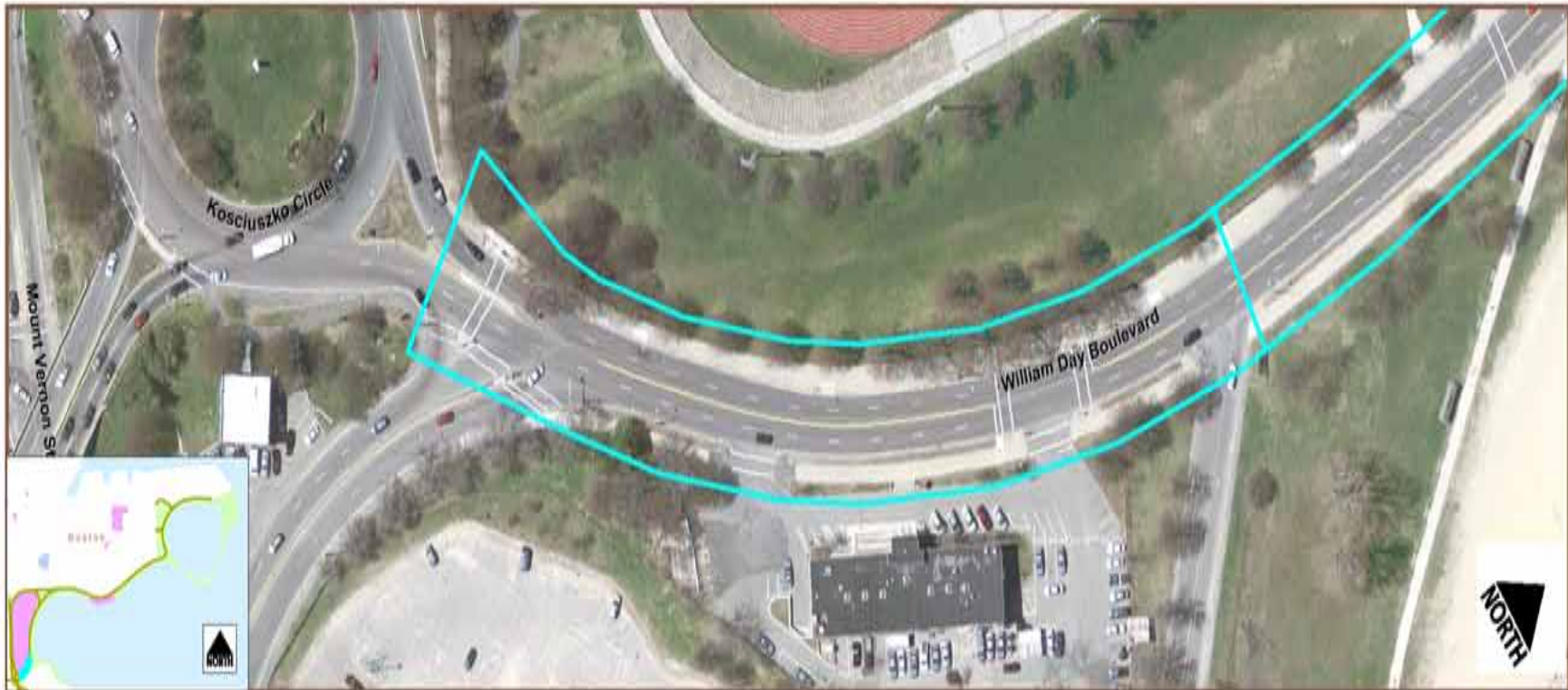
- No Change
- **No Parking** anytime on south side (beach side).

# Map 1

2. at KOSCIUSKO CIR

Day Boulevard Parking

Massachusetts Department of Conservation and Recreation



Not a Survey Document. May contain errors and omissions.  
April 2008-2009 Image. Sources: DCR and MassGIS.  
Grid: Massachusetts State Plane Meters, NAD 1983. DN 2011-04.

100 FT



# Proposed Parking Changes

## Day Blvd. - I Street to K Street (north side only)

- Un-restricted Parking from 7:00am to 10:00pm;
- Resident Permit Parking from 10:00pm 7:00am
- North side of Day Blvd only.

# Map 2

7. I ST to K ST

Day Boulevard Parking

Massachusetts Department of Conservation and Recreation



Not a Survey Document. May contain errors and omissions.  
April 2008-2009 Image. Sources: DCR and MassGIS.  
Grid: Massachusetts State Plane Meters, NAD 1983, DN 2011-04.

100 FT



# Proposed Parking Changes

## Day Blvd. - K Street to M Street (north side only)

- Un-restricted Parking from 7:00am to 10:00pm
- Resident Permit Parking from 10:00pm to 7:00am.

# Map 3

8. K ST to M ST

Day Boulevard Parking

Massachusetts Department of Conservation and Recreation



Not a Survey Document. May contain errors and omissions.  
April 2008-2009 Image. Sources: DCR and MassGIS.  
Grid: Massachusetts State Plane Meters, NAD 1983. DN 2011-04.

100 FT



# Proposed Parking Changes

## Day Blvd. - M Street to O Street (north side only)

- Un-restricted Parking from 7:00am to 10:00pm;
- Resident Permit Parking from 10:00pm to 7:00am.

# Map 4

9. M ST to O ST

Day Boulevard Parking

Massachusetts Department of Conservation and Recreation



Not a Survey Document. May contain errors and omissions.  
April 2008-2009 Image. Sources: DCR and MassGIS.  
Grid: Massachusetts State Plane Meters, NAD 1983. DN 2011-04.

100 FT



# Proposed Parking Changes

## Day Blvd. - O Street to Farragut Road

- **No Change**
- **Un-restricted Parking** North and South sides of Day Blvd.

# Map 5

10. O ST to FARRAGUT RD

Day Boulevard Parking

Massachusetts Department of Conservation and Recreation



Not a Survey Document. May contain errors and omissions.  
April 2008-2009 Image. Sources: DCR and MassGIS.  
Grid: Massachusetts State Plane Meters, NAD 1983, DN 2011-04.

100 FT



# Proposed Parking Changes

## Day Blvd. - Farragut Road to Shore Road

- Un-restricted Parking both sides 7:00am-10:00pm;
- Resident Permit Parking north side only 10:00pm to 7:00am
- No Parking south side only 10:00pm – 7:00am

# Map 6a

11. FARRAGUT RD to CITY POINT

Day Boulevard Parking

Massachusetts Department of Conservation and Recreation



Not a Survey Document. May contain errors and omissions.  
April 2008-2009 Image. Sources: DCR and MassGIS.  
Grid: Massachusetts State Plane Meters, NAD 1983. DN 2011-04.



# Map 6b

12. CITY POINT to E BROADWAY

Day Boulevard Parking

Massachusetts Department of Conservation and Recreation



Not a Survey Document. May contain errors and omissions.  
April 2008-2009 Image. Sources: DCR and MassGIS.  
Grid: Massachusetts State Plane Meters, NAD 1983, DN 2011-04.

100 FT



# Map 6c

14. E BROADWAY to SHORE RD

Day Boulevard Parking

Massachusetts Department of Conservation and Recreation



Not a Survey Document. May contain errors and omissions.  
April 2008-2009 Image. Sources: DCR and MassGIS.  
Grid: Massachusetts State Plane Meters, NAD 1983. DN 2011-04.

100 FT



# Proposed Parking Changes

## Shore Road

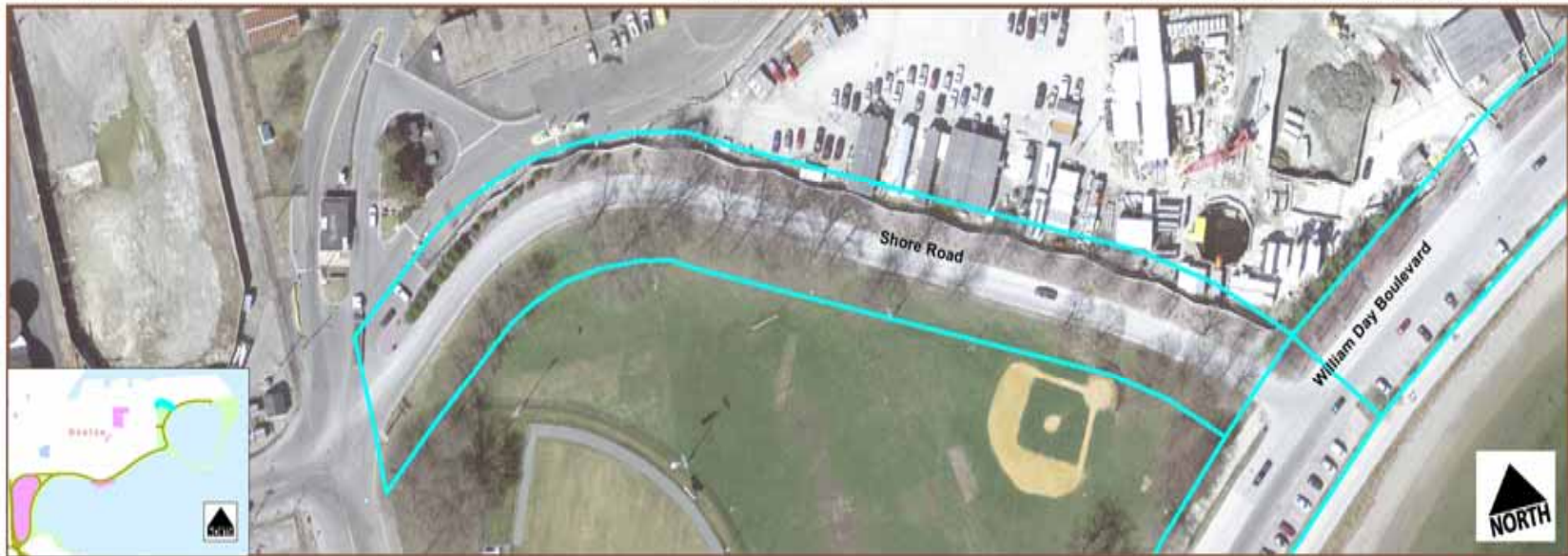
- Un-restricted Parking on west side (ball field side) 7:00am-10:00pm;
- Resident Permit Parking on west side from 10:00pm to 7:00am;
- No Parking at any time on east side.

# Map 7

15. SHORE ROAD

Day Boulevard Parking

Massachusetts Department of Conservation and Recreation



Not a Survey Document. May contain errors and omissions.  
April 2008-2009 Image. Sources: DCR and MassGIS.  
Grid: Massachusetts State Plane Meters, NAD 1983, DN 2011-04.

100 FT



# No Parking Changes

## Shore Road to Castle Island Parking Lots

### No Change

- **Gates at Shore Road close at 11:00pm nightly.**
- **All vehicles out of parking lots by 10:00pm.**

# Map 8

16. SHORE RD to CASTLE ISLAND

Day Boulevard Parking

Massachusetts Department of Conservation and Recreation



Not a Survey Document. May contain errors and omissions.  
April 2008-2009 Image. Sources: DCR and MassGIS.  
Grid: Massachusetts State Plane Meters, NAD 1983, DN 2011-04.

100 FT



# No Parking Changes

**DCR Murphy Rink Lot, City Point Lot and  
Carson Beach lots**

**No Change**

- **No Parking** after 11:00pm

# No Parking Changes

## No Change to Street Sweeping Program

- A reminder that the DCR Street Sweeping Program is in effect in all posted areas from April 1-Nov 30.

# Schedule

- Public Information meeting May 19, 2011
- DCR Sign production and installation  
May - June
- Proposed parking changes implemented  
by late June
- Late Fall Public Meeting to review plan

# Discussion

*Questions and Answers*

## Additional Information:

For more information:

- <http://www.mass.gov/dcr/news/publicmeetings/parkwaysmaterials.htm>

If you have questions or concerns:

- Email: [dcr.updates@state.ma.us](mailto:dcr.updates@state.ma.us)
- Write: DCR Updates, Mass. Department of Conservation and Recreation, 251 Causeway Street, Suite 900, Boston MA 02114

# Additional Information

- City of Boston – Resident Permit Parking Program
- <http://www.cityofboston.gov/Parking/residentparking/>