

Merrimack River Dredging/Dune Nourishment Project

A Partnership of Federal, State & Local Government
November 5, 2010



Project Overview

- Federal Navigation Project
 - Maintenance Dredging of Merrimack River Channel
 - Expected dredged material 160,000 cubic yards
 - 100% Federally-funded
- Beneficial Reuse of Material
 - Placement of material at two severely eroded areas in Salisbury and Newbury (Plum Island)
 - Additional cost 65% Federal/35% Local
 - DCR designated as Local Project Sponsor



Partnership

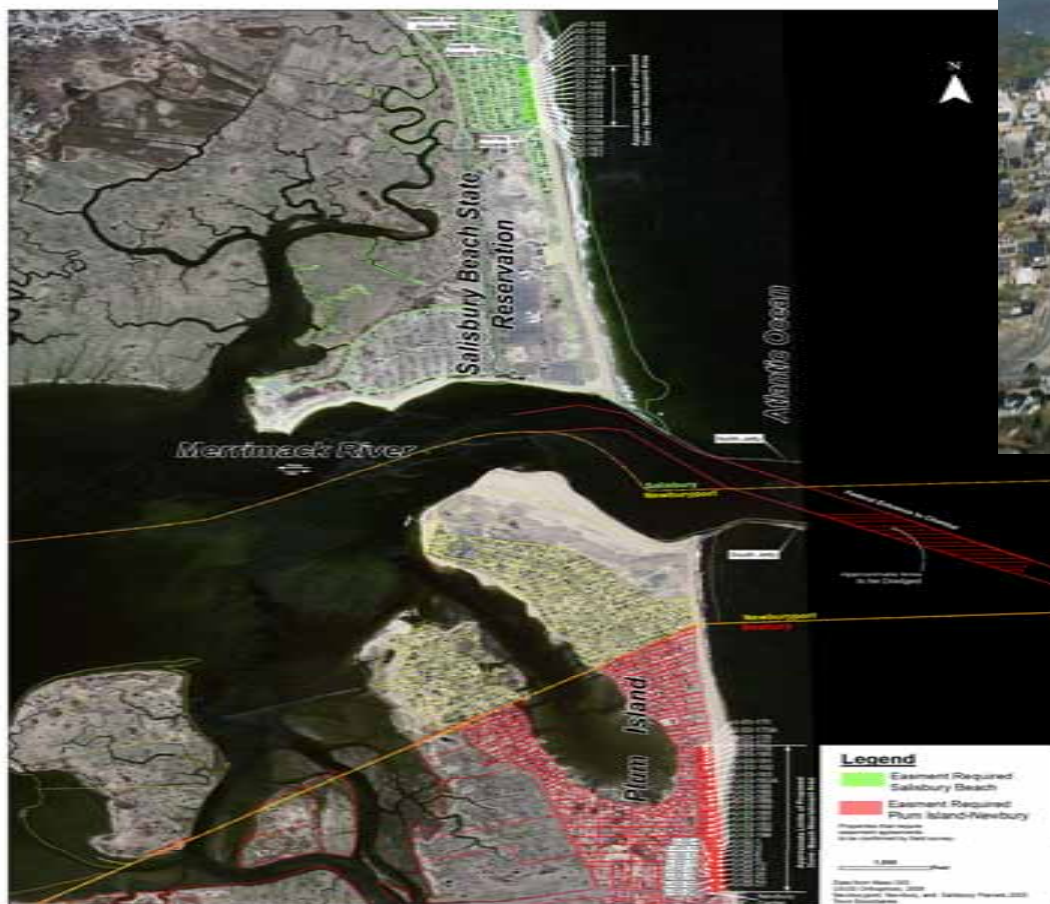
- Costs
 - Federal: \$7.186,000
 - State/DCR: \$865,375
 - Local: \$212,625
- Merrimack River Beach Alliance
 - Elected Officials (Sen. Tarr/Sen. Baddour/Rep. Costello)
 - EOEEA: DCR, DEP, CZM
 - Environmental Regulators
 - Local Organizations
 - Residents



Challenges

- Permitting
 - Ongoing commitment to monitor for rare species
 - Development of New Beach Management Plans
- Private Property Easements
 - Obtained from 33 homeowners
- Public Policy
 - What is the public's responsibility?

Project Area



Coastal Erosion



Site Preparation



Construction Equipment



Construction



Construction



Construction



Construction Challenges





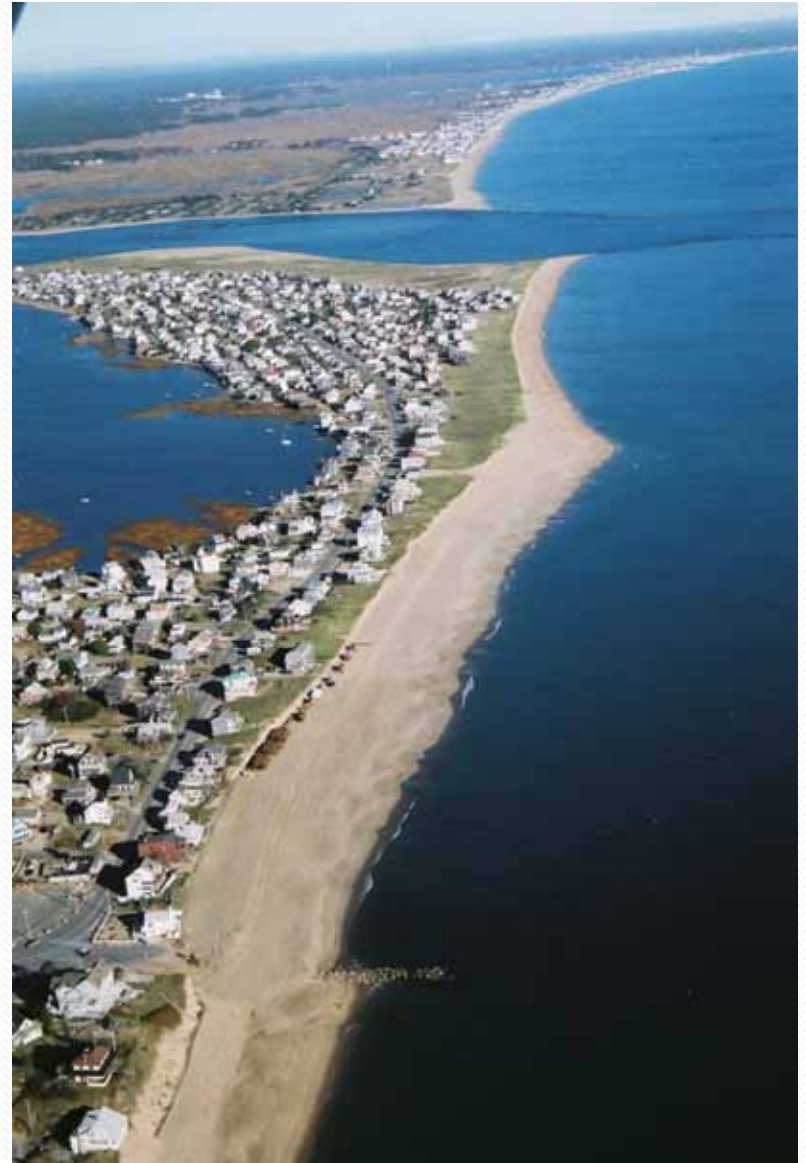
Post Construction

- 160,000 of Material Dredged and Deposited Onshore
 - 120,000 on Newbury
 - 40,000 on Salisbury
- Sitework
 - Fencing
 - Planting w/ Dune grass
- Improved Beach Management

Post Construction



Post Construction





Next Steps

- Improved Beach Management
 - DCR/Salisbury leadership (fencing, planting, etc.)
 - New Plans in place for Newburyport & Newbury
- Planning
 - Regional Sediment Transportation Study
- Potential Jetty Repair
 - Scope determined by results of study
- EOEEA Policy Development
 - DCR, DEP, CZM