

**dcr** MASSACHUSETTS DEPARTMENT OF  
CONSERVATION AND RECREATION

July 7, 2011

DCR Stewardship Council Meeting

**dcr** MASSACHUSETTS DEPARTMENT OF  
CONSERVATION AND RECREATION

# Tornado Response

## DCR's Mobilization

Images of Brimfield State Forest

**dcr** MASSACHUSETTS DEPARTMENT OF  
CONSERVATION AND RECREATION

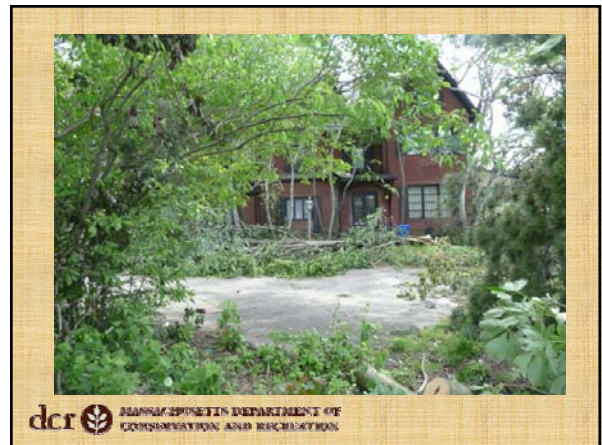
**dcr** MASSACHUSETTS DEPARTMENT OF  
CONSERVATION AND RECREATION

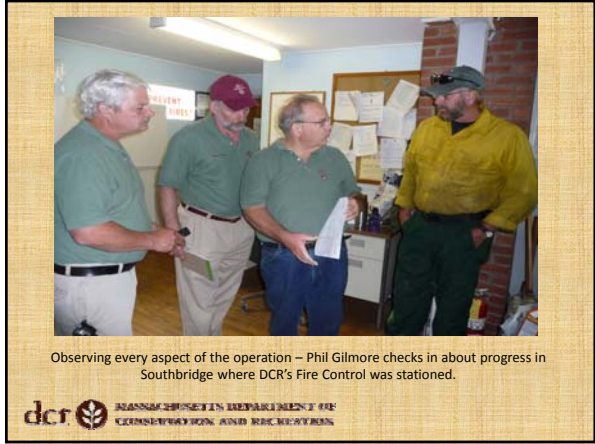
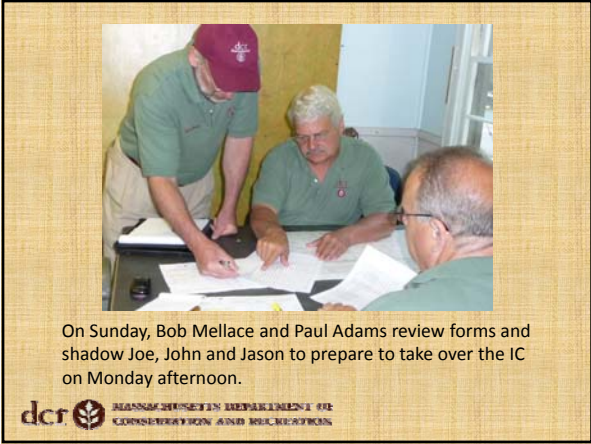
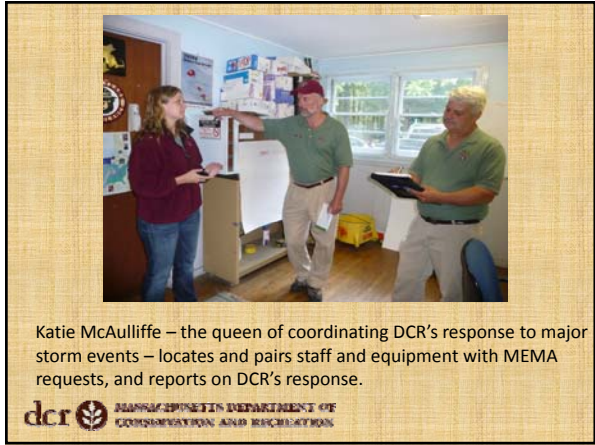
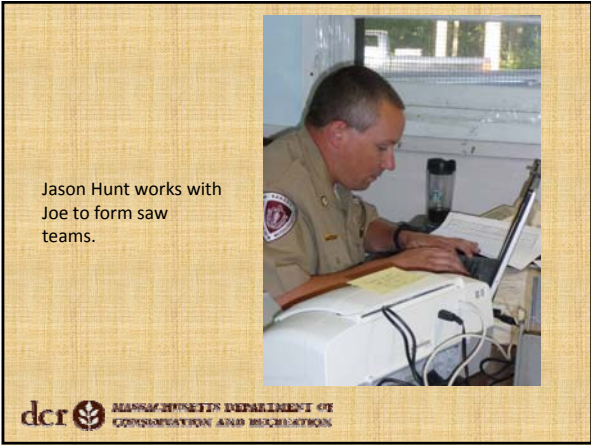
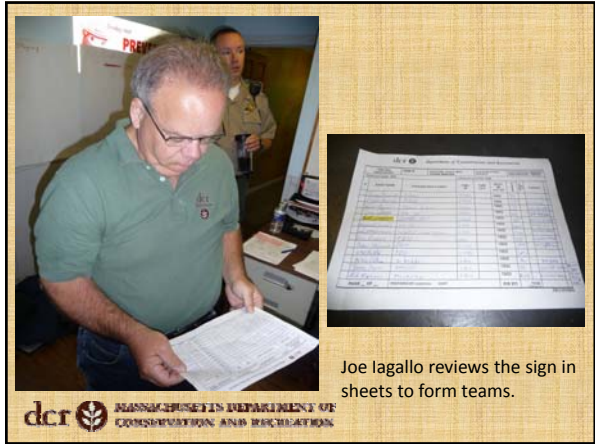
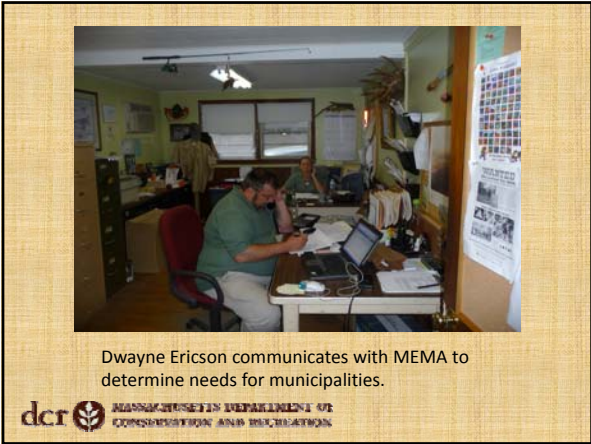
**dcr** MASSACHUSETTS DEPARTMENT OF  
CONSERVATION AND RECREATION

**dcr** MASSACHUSETTS DEPARTMENT OF  
CONSERVATION AND RECREATION











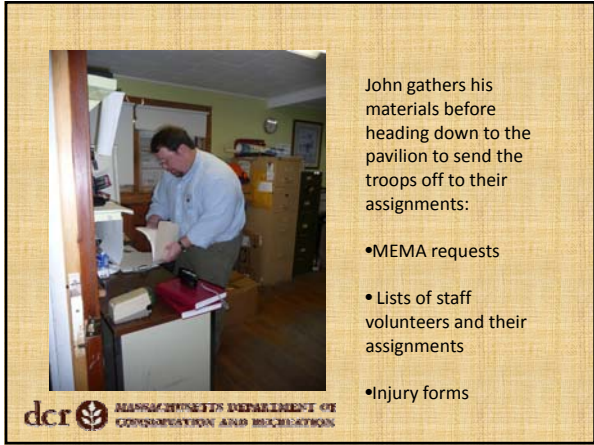
John assigns Phil Gilmore and Arlen Celana as liaisons with Westfield and Springfield.

dcrc MASSACHUSETTS DEPARTMENT OF CONSERVATION AND RECREATION



John assigns Jason the "safety talk" to deliver to the troops before they are deployed for the day.

dcrc MASSACHUSETTS DEPARTMENT OF CONSERVATION AND RECREATION



John gathers his materials before heading down to the pavilion to send the troops off to their assignments:

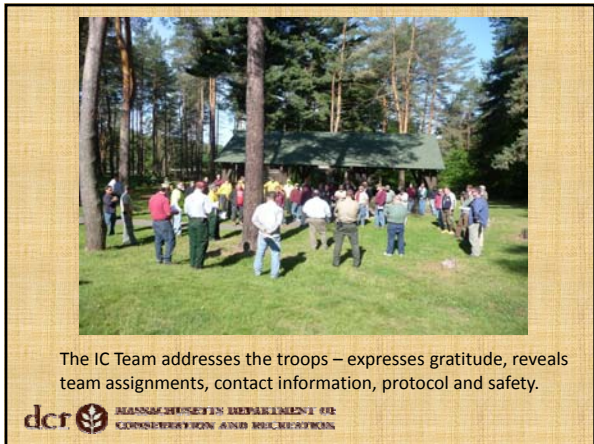
- MEMA requests
- Lists of staff volunteers and their assignments
- Injury forms

dcrc MASSACHUSETTS DEPARTMENT OF CONSERVATION AND RECREATION



Final prep before addressing the teams.

dcrc MASSACHUSETTS DEPARTMENT OF CONSERVATION AND RECREATION



The IC Team addresses the troops – expresses gratitude, reveals team assignments, contact information, protocol and safety.

dcrc MASSACHUSETTS DEPARTMENT OF CONSERVATION AND RECREATION




John welcomes everyone – noting that some people are here for a third straight day and everyone's time is appreciated.

dcrc MASSACHUSETTS DEPARTMENT OF CONSERVATION AND RECREATION



Phil Gilmore talks about safety, sensitivity and how grateful the tornado victims are for assistance.

dcrc MASSACHUSETTS DEPARTMENT OF CONSERVATION AND RECREATION




Never underestimate the power of a team!

dcrc MASSACHUSETTS DEPARTMENT OF CONSERVATION AND RECREATION

dcrc MASSACHUSETTS DEPARTMENT OF CONSERVATION AND RECREATION

## Tornado Response Plan



### Tornado Damage to Robinson State Park and Brimfield State Forest


- Robinson State Park – Approximately 20 acres of damage, concentrated around the power lines and day use picnic and swim area
- Brimfield State Forest – Over 600 acres, within the core tornado path, another 300-500 acres with some damage

dcrc MASSACHUSETTS DEPARTMENT OF CONSERVATION AND RECREATION

### Aerial view of tornado path

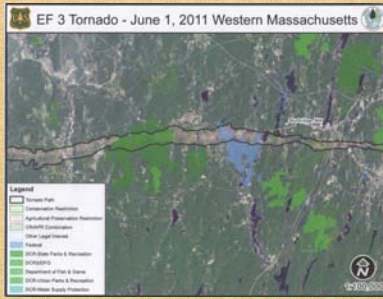


### Robinson State Park

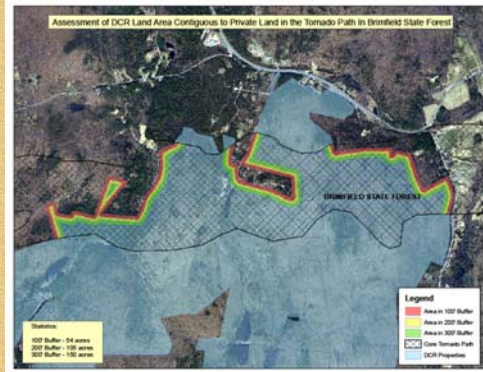


dcrc MASSACHUSETTS DEPARTMENT OF CONSERVATION AND RECREATION

### Brimfield SF and tornado path



dcrc MASSACHUSETTS DEPARTMENT OF CONSERVATION AND RECREATION



dcrc MASSACHUSETTS DEPARTMENT OF CONSERVATION AND RECREATION

### Tornado Damage Brimfield SF



dcrc MASSACHUSETTS DEPARTMENT OF CONSERVATION AND RECREATION

### CCC Carpenter Shop



dcrc MASSACHUSETTS DEPARTMENT OF CONSERVATION AND RECREATION

### Tornado Challenges

- Removal of downed woody material
- Reconstruction of facilities
- Public Safety
- Fire Danger/fuel loads

dcrc MASSACHUSETTS DEPARTMENT OF CONSERVATION AND RECREATION

### Opportunities

- DCR assistance to affected communities
- Tree replanting efforts
- Re-use of salvaged wood
- Long term monitoring possibilities

dcrc MASSACHUSETTS DEPARTMENT OF CONSERVATION AND RECREATION

### DCR re-planting efforts



dcrc MASSACHUSETTS DEPARTMENT OF  
CONSERVATION AND RECREATION

### Natural Heritage Turtle Monitoring Training



dcrc MASSACHUSETTS DEPARTMENT OF  
CONSERVATION AND RECREATION

### Next steps at Robinson State Park

- Review bids from bid showing at Robinson State Park
- Select vendor, begin work next week
- Re-open Robinson State Park in two weeks

dcrc MASSACHUSETTS DEPARTMENT OF  
CONSERVATION AND RECREATION

### Next steps at Brimfield State Forest

- Bid showing at Brimfield State Forest in two weeks
- Select vendor, begin Phase 1 work in three weeks
- Assess fuel loads and abutter boundaries, salvage timber where necessary and practical for beneficial re-use – Phase 2
- Working with partners, set up long term monitoring opportunities in the affected forest – Phase 3

dcrc MASSACHUSETTS DEPARTMENT OF  
CONSERVATION AND RECREATION