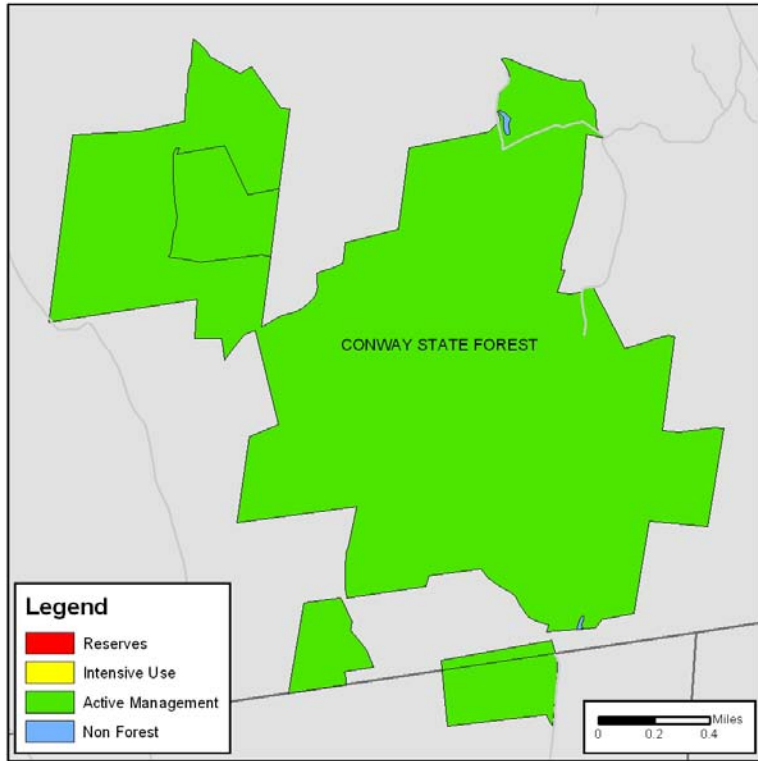


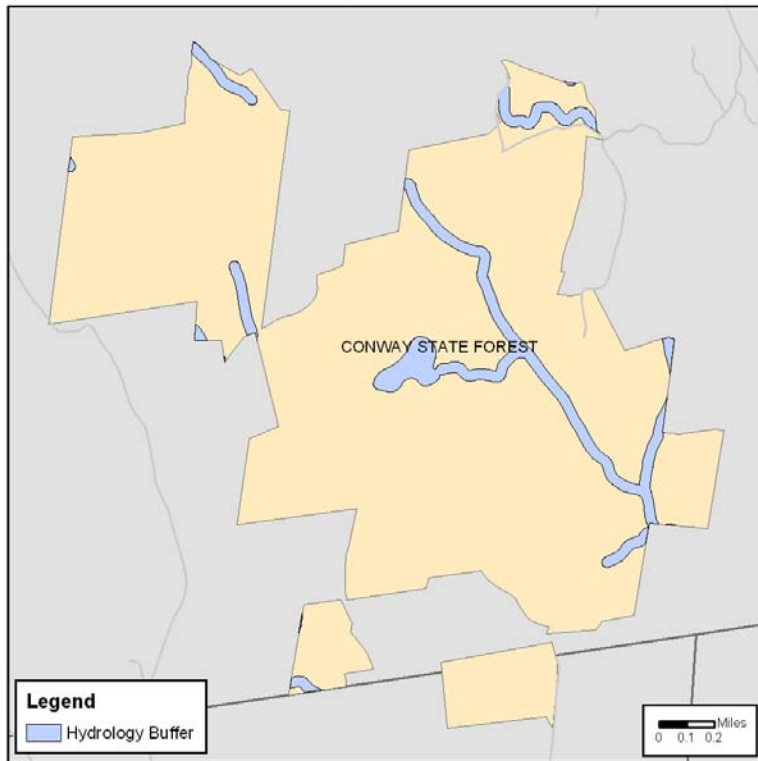
Appendix B – Property Maps

19. Conway State Forest – Reserves, Intensive Use and Active Management Areas
20. Conway State Forest – Hydrology Buffers
21. Conway State Forest – Road and Trail Corridors
22. Conway State Forest – Rare Species
23. Conway State Forest – Vegetation
24. Conway State Forest – Vegetation with Resource Overlays
25. Conway State Forest – Prime Soils
26. Conway State Forest – Archeologically Sensitive Areas
27. Conway State Forest – Potential Timber Harvests

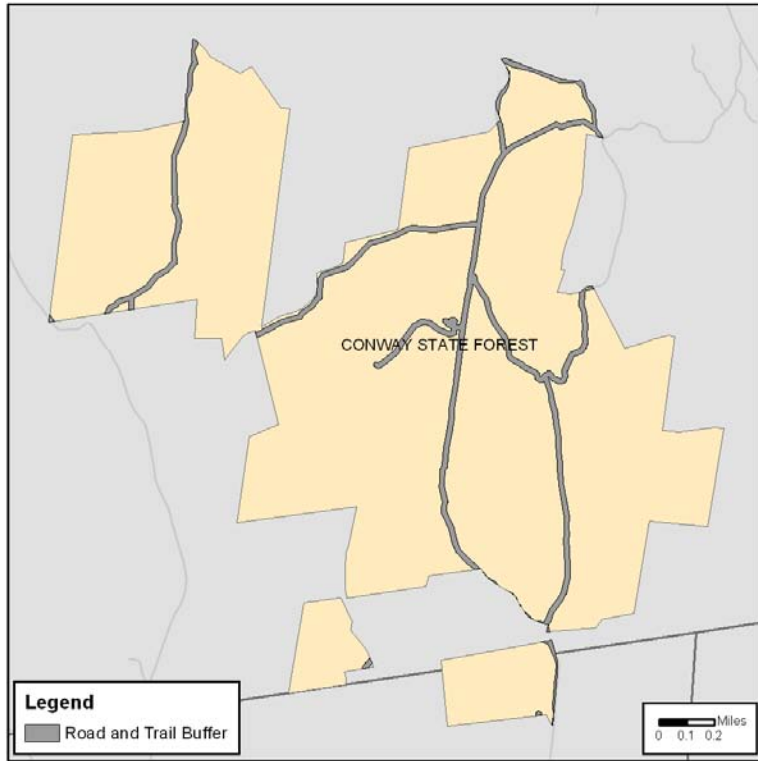
Conway State Forest
Reserves, Intensive Use and Active Management Areas



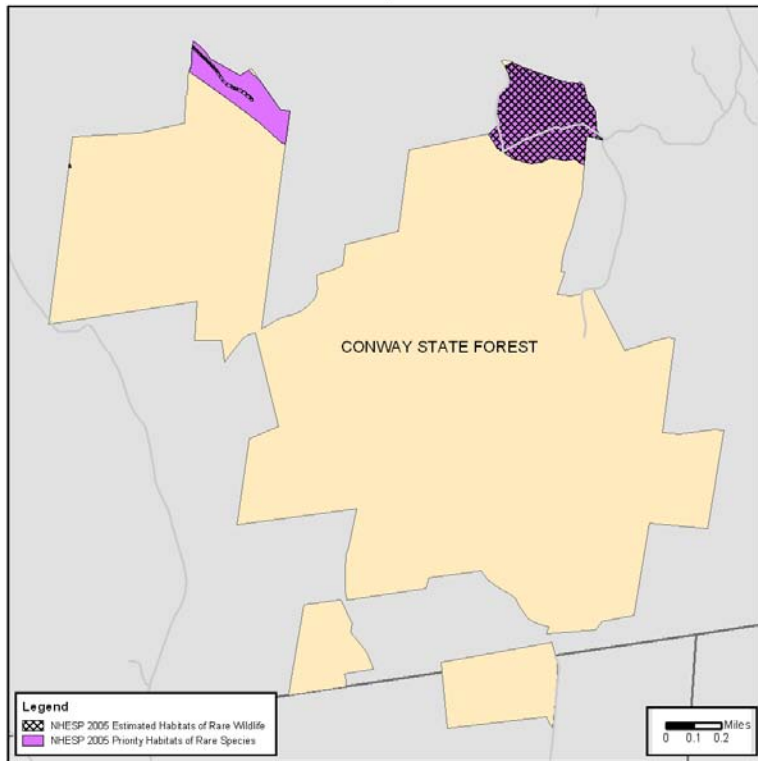
Conway State Forest
100' Hydrology Buffers



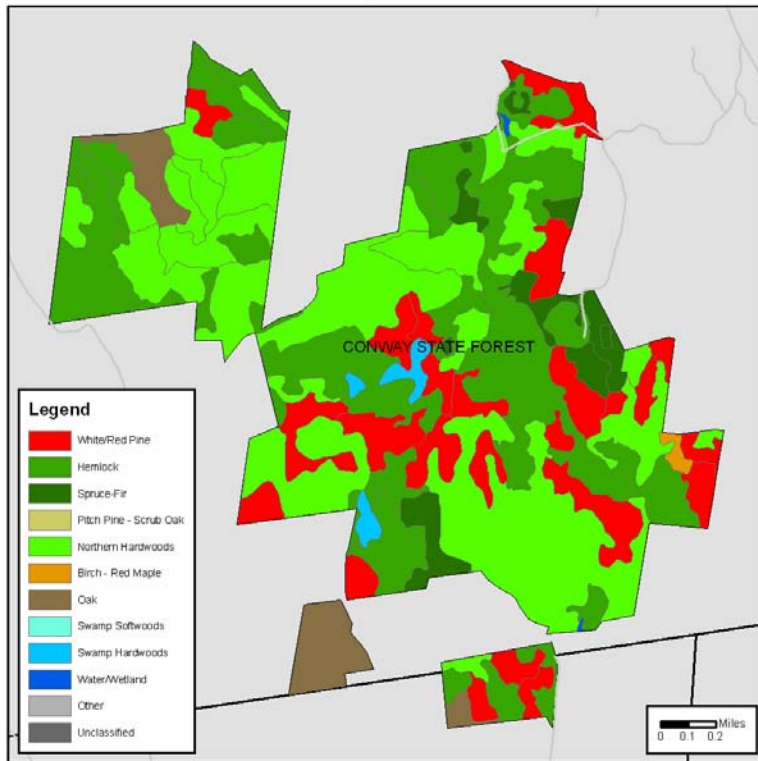
Conway State Forest
50' Road and Trail Buffers



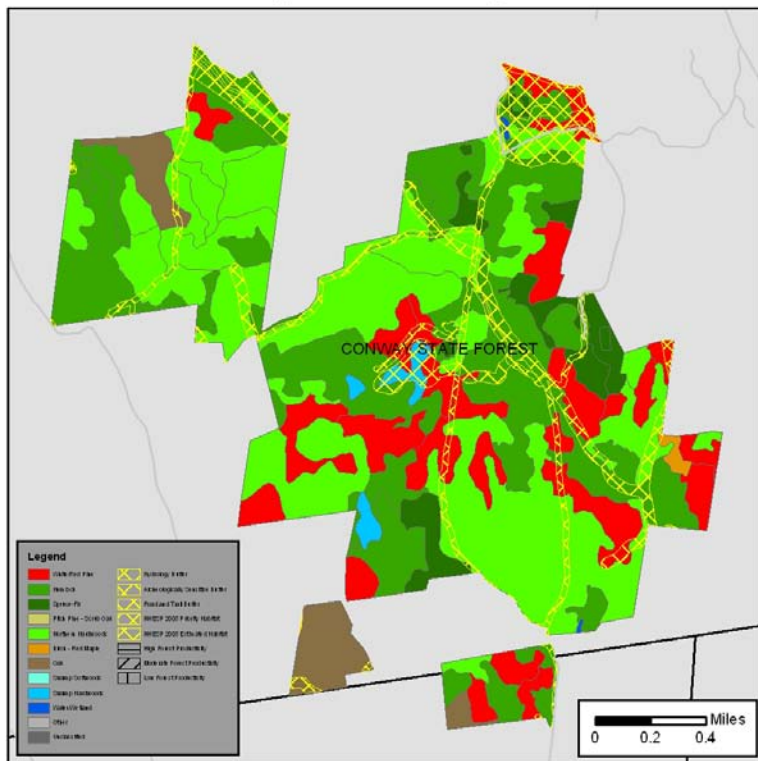
Conway State Forest
Rare Species



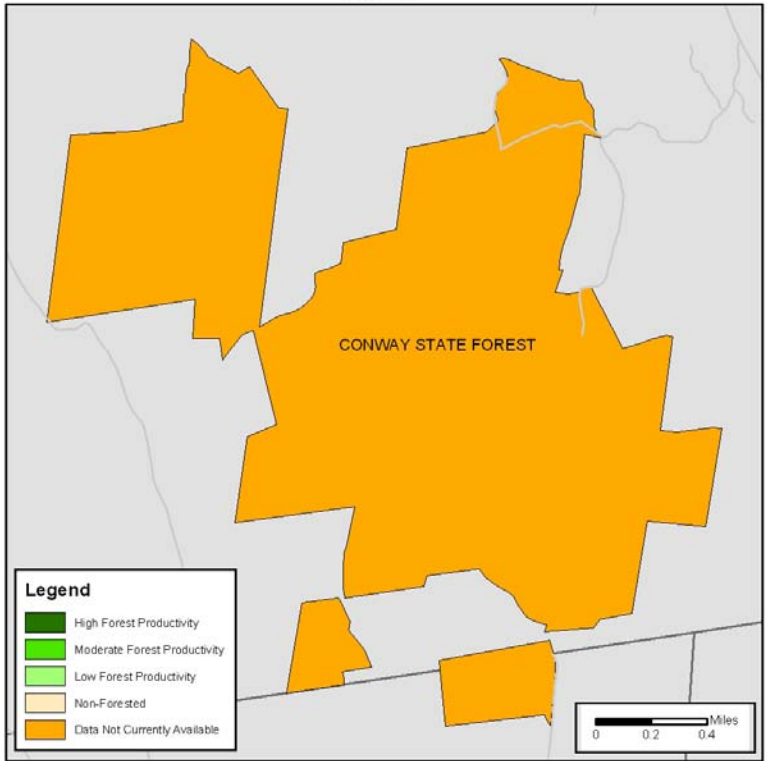
Conway State Forest
Vegetation



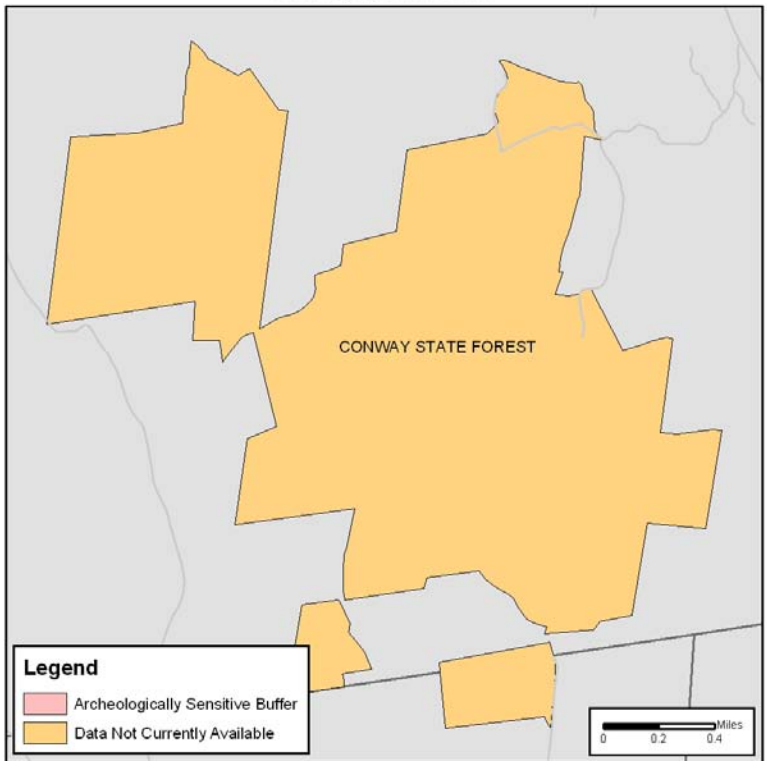
Conway State Forest
Vegetation With Resource Overlays



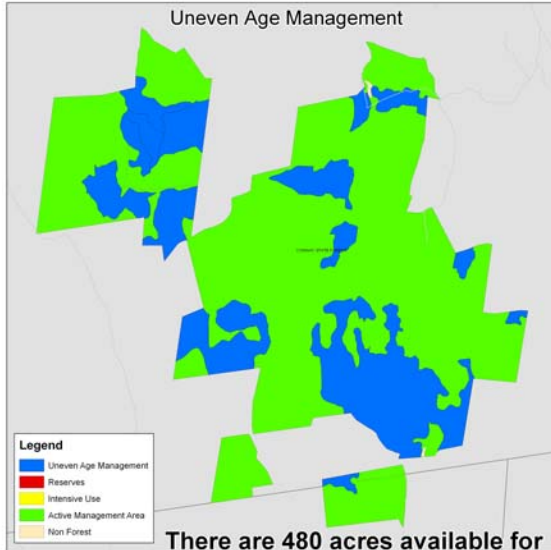
Conway State Forest
Prime Soils



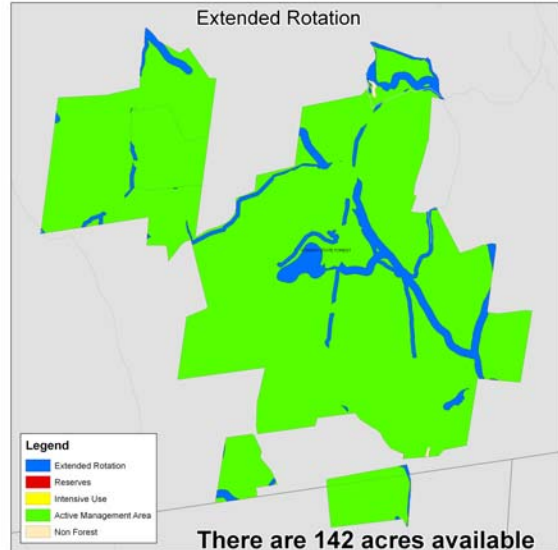
Conway State Forest
Archeologically Sensitive Buffer



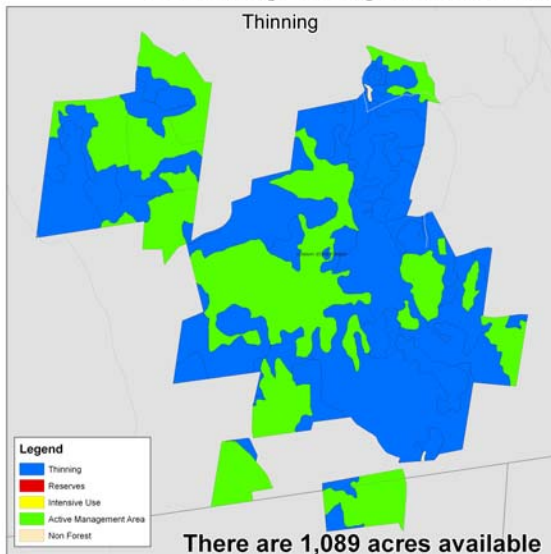
Conway State Forest - Potential Timber Harvests Within Next 15 Years By Silvicultural Technique



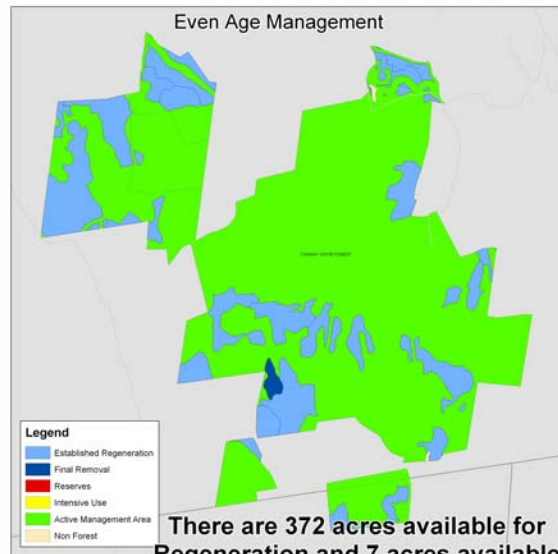
There are 480 acres available for Uneven Age Management harvests



There are 142 acres available for Extended Rotation harvests



There are 1,089 acres available for Thinning harvests



There are 372 acres available for Regeneration and 7 acres available for Final Removal harvests