

MA Large Forest Reserves

Technical Steering Committee

October 14, 2009

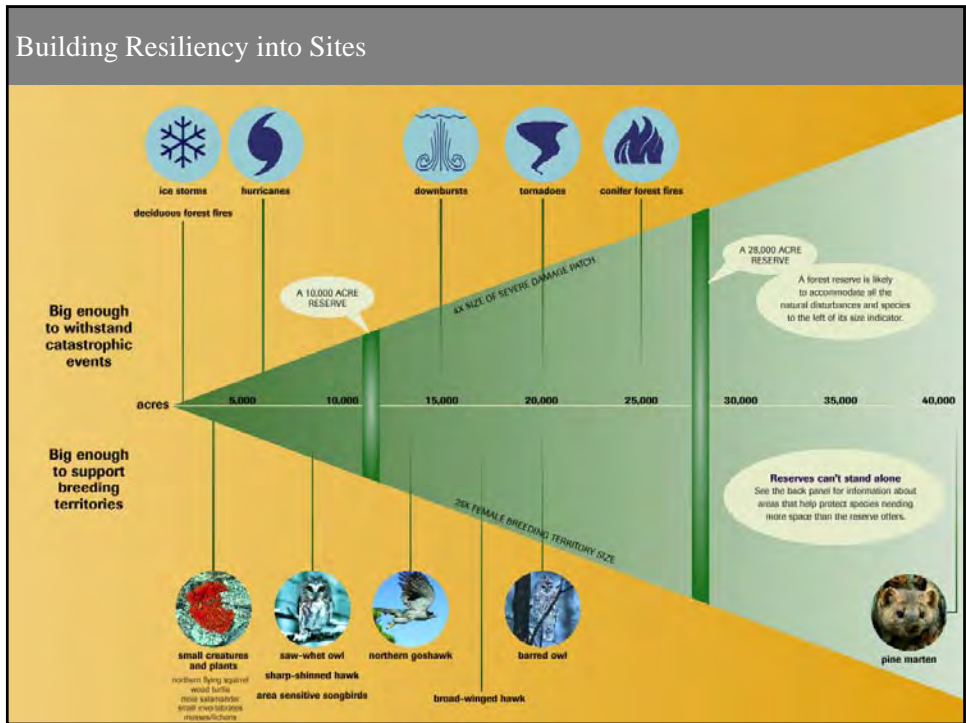
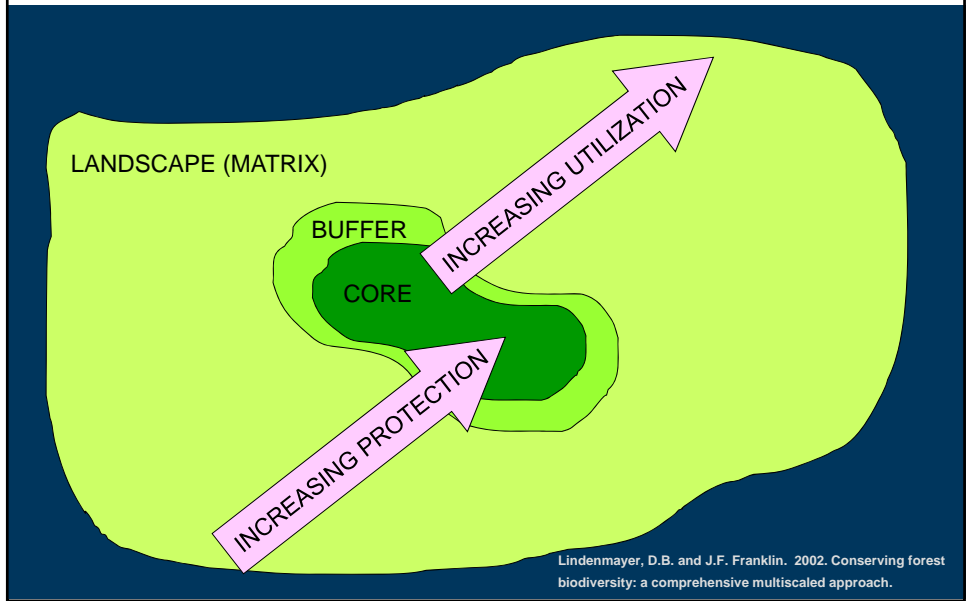
- 2003-2007 EOE/DCR/DFW Reserve Selection Process
 - Size, Integrity, Representation, Replication
 - Biodiversity Values
- Straw proposals for enhancing DCR reserve network

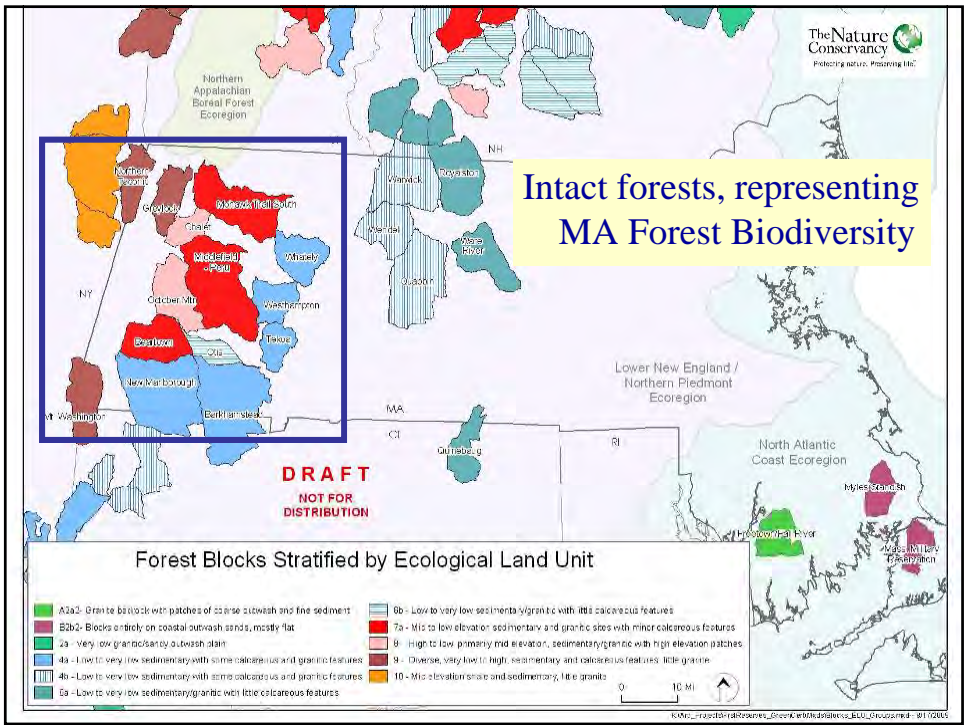
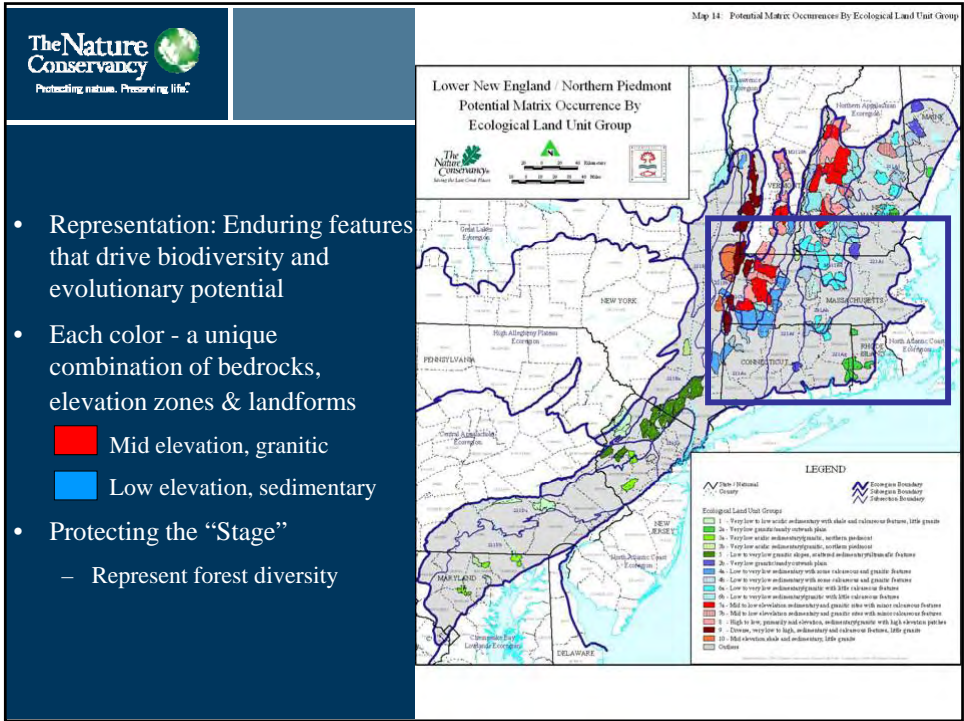


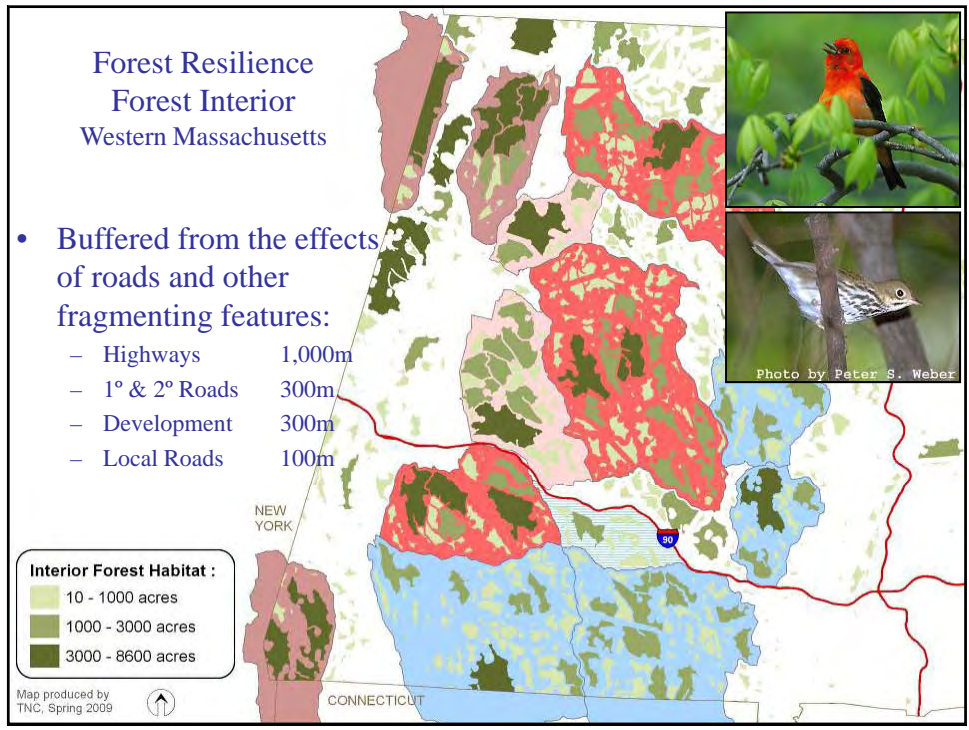
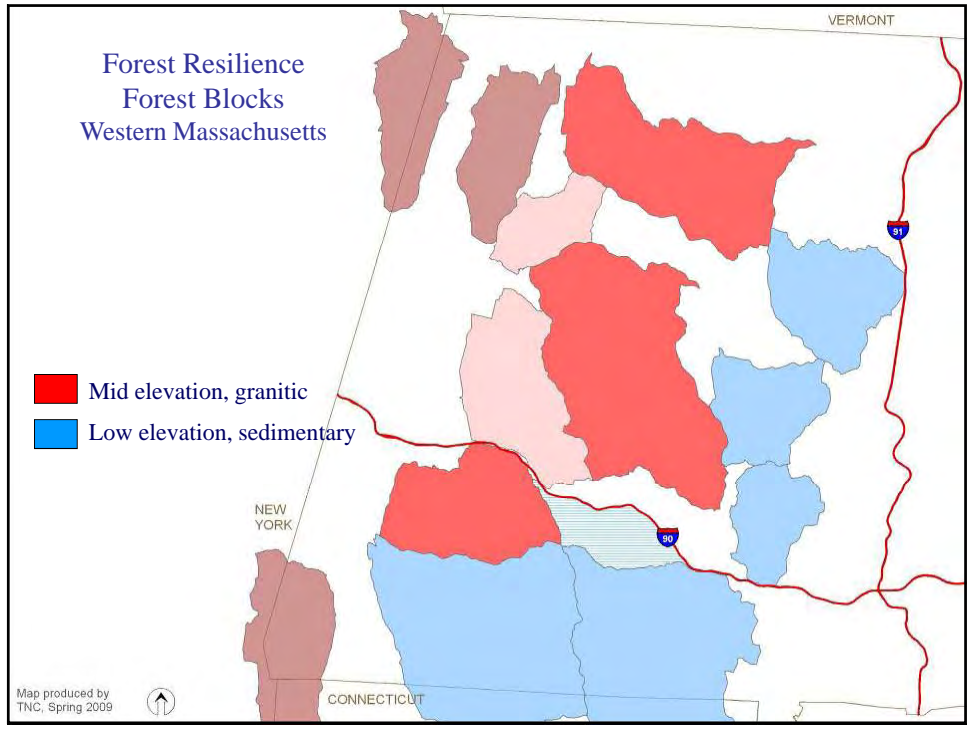
Why large Reserves?

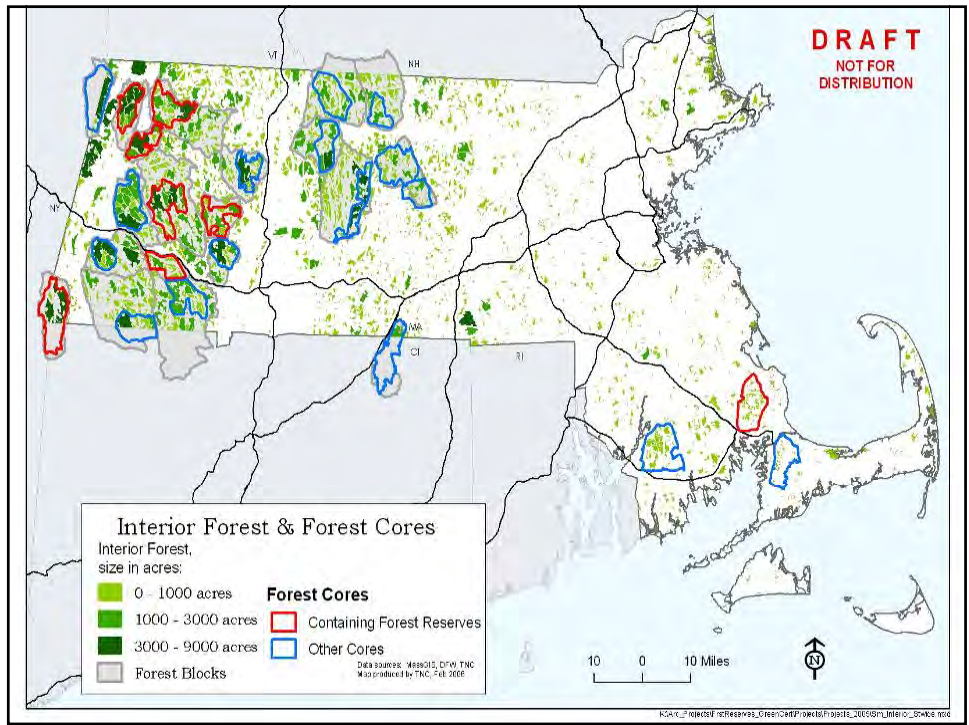
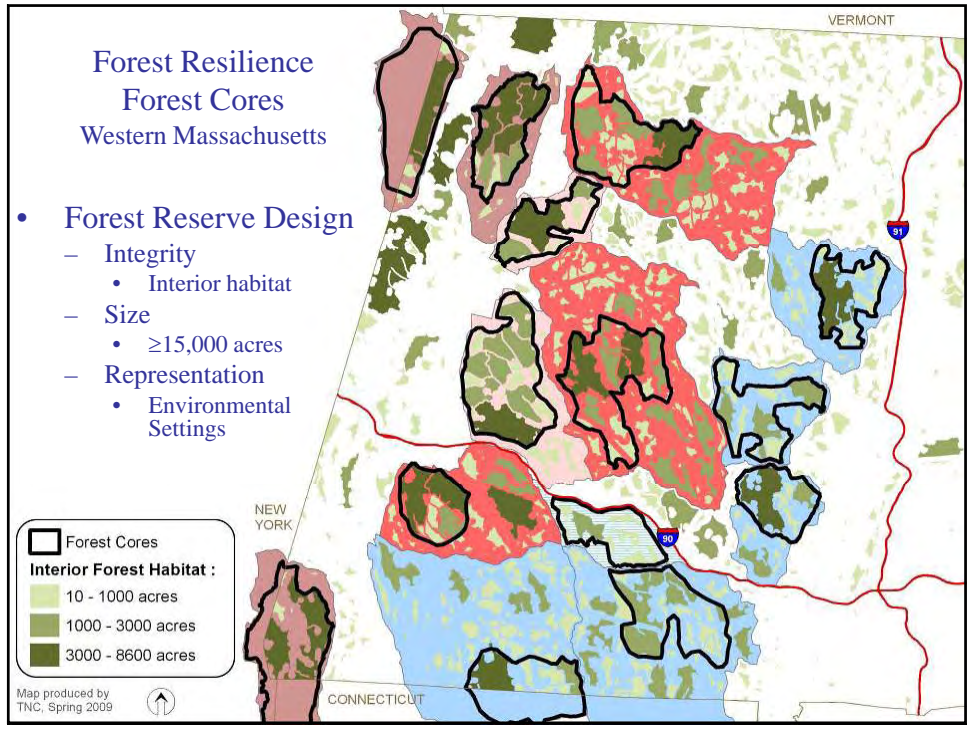
- Full suite of representative biodiversity
 - Successful breeding of forest interior species
- Absorb and recover from large disturbances
 - Biological Legacies
- Ecological and evolutionary processes
 - Response to global changes
- Reference/Benchmark/Research sites
 - Compare with working forests
- (Wildlife, clean water, clean air)
- Recreational, educational & spiritual benefits

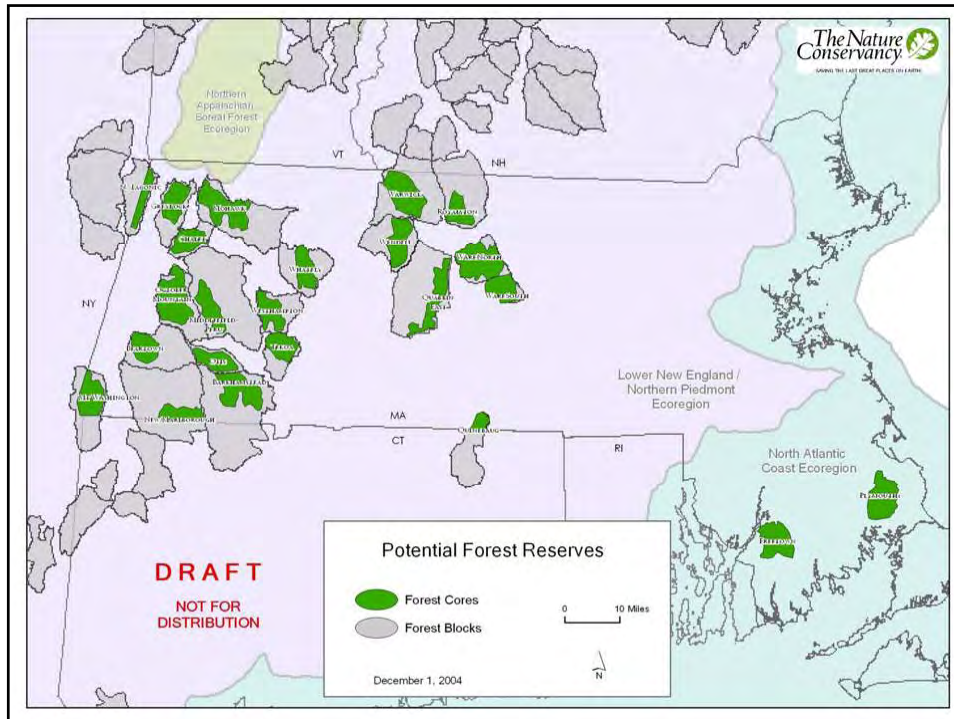
Lindenmeyer and Franklin, 2002, Noss and Cooperider, 1994, Foster et al, 2005, Norton, D. 1999, Haney, C.J. and C.P. Schaadt. 1996, Selva, S. 1996, Anderson, M.G. and S.L. Bernstein (editors). 2003









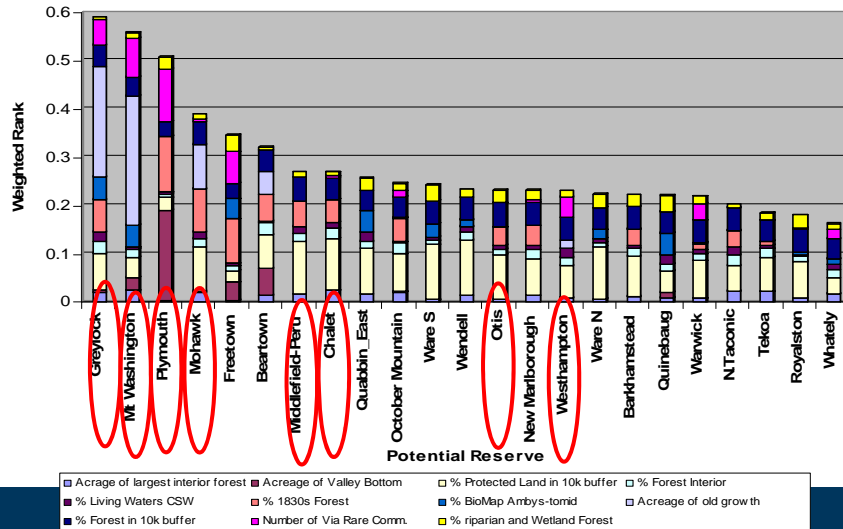


Biodiversity Value: Forest Reserve Evaluation Criteria

Experts including: UMass, NEFF, DCR Service & Management Foresters,
USFS Wildlife Biologist, DFW Forester, Private Forester, MAS, TNC

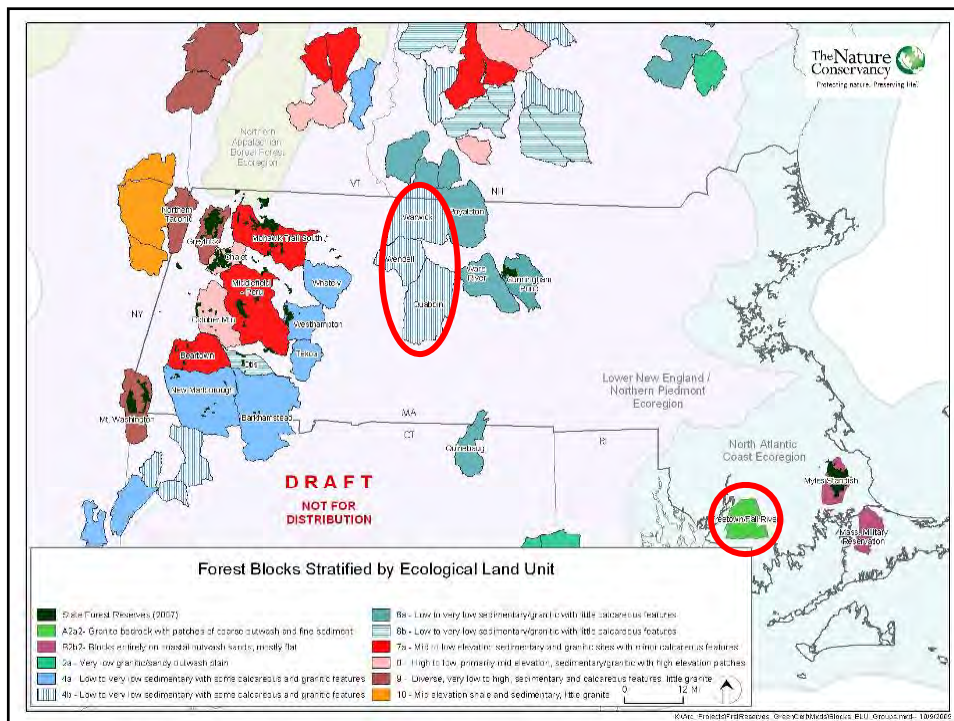
<u>Criteria</u>	<u>Weight</u>
• Acreage of Old Growth	.268
• Acreage of Valley Bottom Land	.188
• % Protected Land in Surrounding area	.115
• % 1830s Forest	.114
• Number of Viable Rare Communities	.108
• % Forest Cover in Surrounding	.051
• % BioMap Ambystomid Habitat	.047
• % Riparian and Wetland Forest	.035
• % Forest Interior	.025
• Acreage of Largest Interior Forest	.025
• % Living Waters Critical Supporting Watershed	.023

Large Reserve Expert Choice Rankings

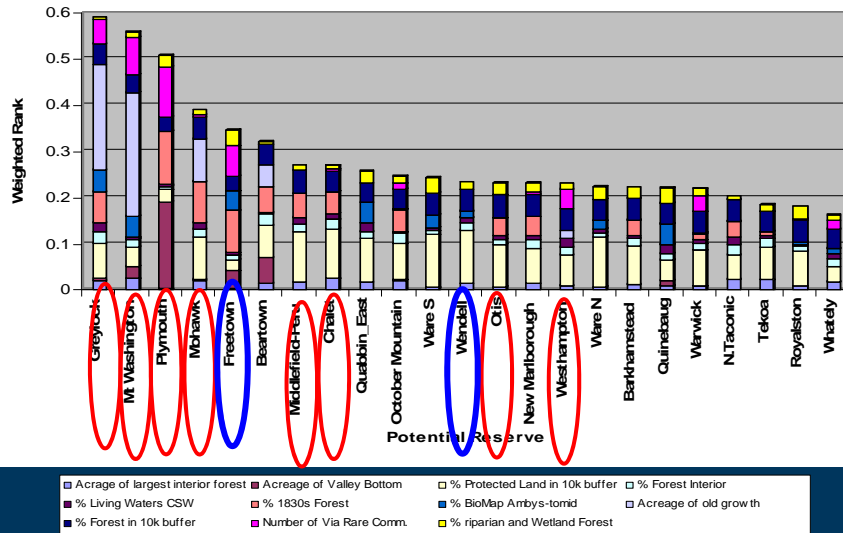


Site Name	Ecological Type	State Lands	Potential ac State Land
Mt. Greylock	Taconic Mountains ELU group 9	Portions of the Mt. Greylock State Reservation	8,500
Mohawk/Monroe/Savoy	Southern Green Mountains	Portions of the Monroe State Forest	7,100
Chalet	Berkshire/Vermont Upland Ecoregion. ELU group 8	Portions of the Chalet, Stafford Hill, and Eugene Moran Wildlife Management Areas, and portions of the Windsor State Forest.	7,112
Mt. Washington	Taconic Mountains ELU group 9	Portions of the Mt. Washington State Forest, and portions of the Jug End State Reservation & Wildlife Management Area	7,155
Middlefield / Peru	Berkshire/Vermont Upland Ecoregion. ELU group 7a	Portions of the Middlefield State Forest.	2,900
Otis	Berkshire/Vermont Upland ELU group 6b	Portions of the Otis State Forest.	769
East Branch Westfield River	Hudson Highlands Ecoregion ELU group 4a	Portions of the Gill Bliss State Forest, and portions of the Hiram Fox Wildlife Management Area.	2,638
Cunningham Pond	Worcester-Monadnock Plateau Ecoregion	Portions of the Ware River Watershed Forest.	3,029
Myles Standish	Cape Cod/Islands Ecoregion	Portions of the Myles Standish State Forest and portions of the Sly Pond Natural Heritage Area.	11,000
			Total 50,203

- Of 285,000 DCR-DSRP acres:
 - 67,000 acres state parks (Ricci et al)
 - 73,000 acres large reserves (Finton) 1/3
 - 73,000 acres late succession (Spencer) 1/3
 - 73,000 all silviculture (Spencer) 1/3



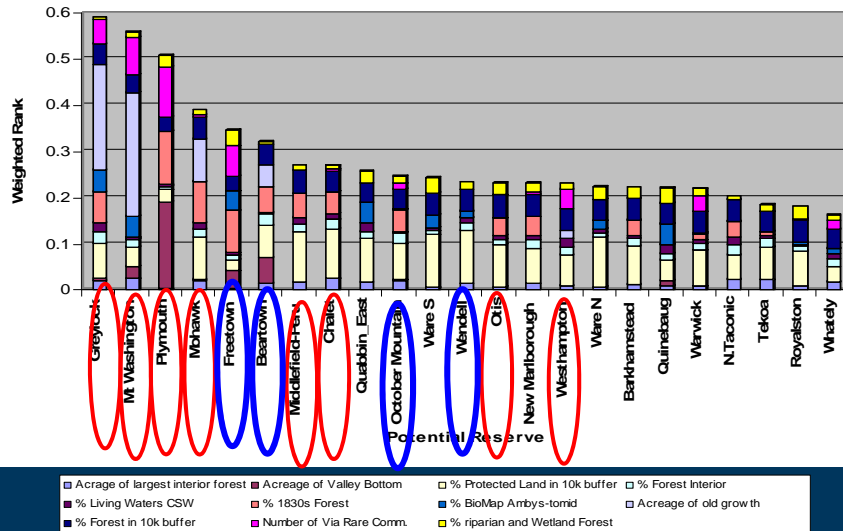
Scenario 3: Hybrid



Scenario 2: Two additional reserves

	Reserves	DCR+	Total	Acq + POS	Total
<i>Freetown-Fall River Matrix</i>	0	10,636	10,636	4,364	15,000
<i>Wendell</i>	0	4,121	4,121	10,879	15,000
Chalet	6,798	316	7,114	6,886	14,000
East Branch Westhampton	2,103	465	2,568	12,432	15,000
Greylock	8,328	3,598	11,926	3,074	15,000
Middlefield-Peru	3,165	3,228	6,393	8,607	15,000
Mohawk	7,097	11,035	18,132	868	19,000
Mt. Washington	7,020	754	7,774	7,226	15,000
Myles Standish Matrix	11,140	1,071	12,211	2,789	15,000
Otis	482	653	1,135	12,865	14,000
Cunningham Pond	3,029	2,717	5,746	9,254	15,000
Total	49,162	38,595	87,757	79,243	167,000

Scenario 3: Four additional reserves



Scenario 3: Four additional reserves

	Reserves	DCR+	Total	Acq + POS	Total
<i>Beartown</i>	507	9,422	9,929	5,071	15,000
<i>Freetown-Fall River Matrix</i>	0	10,636	10,636	4,364	15,000
<i>October Mountain</i>	1,383	14,300	15,683	317	16,000
<i>Wendell</i>	0	4,121	4,121	10,879	15,000
Chalet	6,798	316	7,114	6,886	14,000
East Branch Westhampton	2,103	465	2,568	12,432	15,000
Greylock	8,328	3,598	11,926	3,074	15,000
Middlefield-Peru	3,165	3,228	6,393	8,607	15,000
Mohawk	7,097	11,035	18,132	868	19,000
Mt. Washington	7,020	754	7,774	7,226	15,000
Myles Standish Matrix	11,140	1,071	12,211	2,789	15,000
Otis	482	653	1,135	12,865	14,000
Cunningham Pond	3,029	2,717	5,746	9,254	15,000
Total	51,052	62,317	113,369	84,631	198,000

