

# Middlesex Fells Resource Management Plan - Update

Stewardship Council

May 6, 2011

# Management Principle and Goals

- *Through the creative use of state management resources, partnerships and volunteer stewardship, protect the cultural and ecological resources at the Middlesex Fells Reservation and provide diverse recreational opportunities that are compatible with resource protection.*
- ***Protect the quality of water resources***
- ***Protect and enhance habitats for rare species, natural communities, native plants and wildlife***
- ***Provide and enhance diverse recreational opportunities***
- ***Preserve the distinct historic and scenic qualities of the reservation***
- ***Enhance compliance with rules and regulations to protect resources and enhance recreational experiences***
- ***Provide opportunities for education and interpretation of resources***
- ***Work with diverse partners and volunteers to achieve these management goals***

# Decision Making Process

Pillars

Site-Specific Data

Potential  
Recommendations





# Decision Making Process

Pillars

Site-Specific Data  
Scientific & Technical  
Literature

Potential  
Recommendations



# Scientific and Technical Literature

Soils and Vegetation

File Edit View Favorites Tools Help

Back Forward Stop Search Folders

Address D:\Jahnige CD - Oct 2010\Recreation\Recreation Impacts\Soils and Vegetation

## CD Writing Tasks

Write these files to CD

## File and Folder Tasks

- Rename this file
- Move this file
- Copy this file
- Publish this file to the Web
- E-mail this file
- Print this file
- Delete this file

## Other Places

- Recreation Impacts
- My Documents

## Details

## Files Currently on the CD

- Wood - 2006 - Assessing vi...  
Abbott et al - 2010 - case...  
Andres-Abel... et al - 2005 ...  
Aram - 2002 - managing climbing groups  
Aspinak and Pye - 198...  
Atik et al - 2009 - Impa...  
Bayfield - 1973 - Us...  
Bayfield et al - 1981 - Susc...  
Beavis - 2000 - Horse ridi...  
Benninger-T... et al - 1992 ...  
Bratton et al - 1978 - Visit...  
Bratton et al - 1979 - Trail...  
Brown et al - 1977 - Effe...  
Bryan - 1977 - Influence of...  
Camp and Knight - 199...  
Campbell and Gibson - 20...  
Cater et al - 2008 - Hig...  
Christensen and Johnse...  
Cole - 1995 - Experimen...  
Cole - nd - Impacts of ...  
Cole and Ferguson - ...  
Cole and Monz - 2003 - Im...  
Cole and Monz - Spatial pat...  
Cole and Spildie - 199...  
Crowder - 1983 - Imp...  
Dale and Weaver - 1...  
Deluca et al - 1998 - Inf...  
Dozza-Farkas - 1987 - Eff...  
Farris - 1995 - Effects of r...  
Fritzsche - 1992 - Soil erosio...  
Gabherr - 1982 - Imp...  
Gallet et al - 2004 - resp...  
Godefroid et al - 2003 - Imp...  
Gower - 2006 - Are horses...  
Greer - 2001 - Nebraska ru...  
Hegetschw... - 2008 - Ec...  
Hegetschw... et al - 2008...  
Ikeda - 2003 - Testing inte...  
Ikeda and Okutomi - 1...  
Jewell and Hammitt - ...  
johnson\_ca... - 1982 - rip...  
Keddy and Spavold - 1...  
kelly and Larson - 19...  
Ketchledge - 1985 - Reh...  
Kuntz and larson - 200...  
Kuss - 1985 - Review of f...  
Kuss - 1986 - A review of ...  
Kuss and Hall - Ground flor...  
Kutiel et al - 2001 - Imp...  
LeCorre et al - 2009 - Bird ...  
Lei - 2004 - Soil comp...  
Lemauiel and Roze - resp...  
Leonard et al - 1985 - Hiker...  
Leonard et al - 1985 - Hiker...  
Li et al - 2005 - Hiking tra...  
Marion and Leung - 200...  
Marion and Olive - 200...  
McEvoy et al - nd - CCVE\_...  
Mcmillan and Larson - Ef...  
Nelson 2006 - Trampling ...  
nelson - 2006 - trampling ...  
Nepal and Way - 2007 ...  
Nuzzo - 1995 - effects of r...  
Olive and Marion - 200...  
Page et al - 1985 - reac...  
PickeringEt...  
Potito - 1995 - Impacts of r...  
Potito and Beatty - 20...  
Potito and Beatty - 20...  
Pouyat et al - 2008 - Res...  
Reid and Marion - 20...  
Reid and Marion - 20...  
Roovers et al - 2004 - Expe...  
Roovers et al - 2004 - Visua...  
Rossi et al - 2006 - S...  
Rusterholz et al - 2004 - E...  
Stohlgren and Parsons - 1...  
Stroh and Struckhoff...  
Studlar - 1980 - trampling ...  
Sun and Liddle - 1993 - Pla...  
Sutherland et al - 2001 - ...  
Taylor et al - 1993 - Scale...  
Thiel and Sprible - 20...  
Torn et al - 2009 - Com...  
Torn et al - 2010 - Can...  
Trail Erosion Bibliography  
Turner - 1987 - Effects of...  
Tyser and Worley - 19...  
Waltert et al - 2002 - Distu...  
Weaver and Dale - 197...  
Wells and Lauenroth ...  
WI Council on forestry - ...  
Wilson and King - 199...  
Wilson and Seney - 199...  
Yoda and Watanabe - ...  
Yorks et al - 1997 - Tol...  
Zabinski and Gannon - 19...

# Decision Making Process

## Pillars

**Site-Specific Data**  
**Scientific & Technical Literature**  
**Previous Planning Documents**

Potential  
Recommendations



# Decision Making Process

## Pillars

**Site-Specific Data**  
**Scientific & Technical Literature**  
**Previous Planning Documents**  
**BMPs and Models**

Potential  
Recommendations



COMMONWEALTH OF MASSACHUSETTS  
METROPOLITAN DISTRICT COMMISSION  
RESERVATIONS & HISTORIC SITES DIVISION

Policy Directive #506 August, 1989

Revised December, 1990  
Revised September, 1991  
Revised February, 1992

Subject: Mountain Bicycle Use in MDC Reservations (excluding Watershed lands)

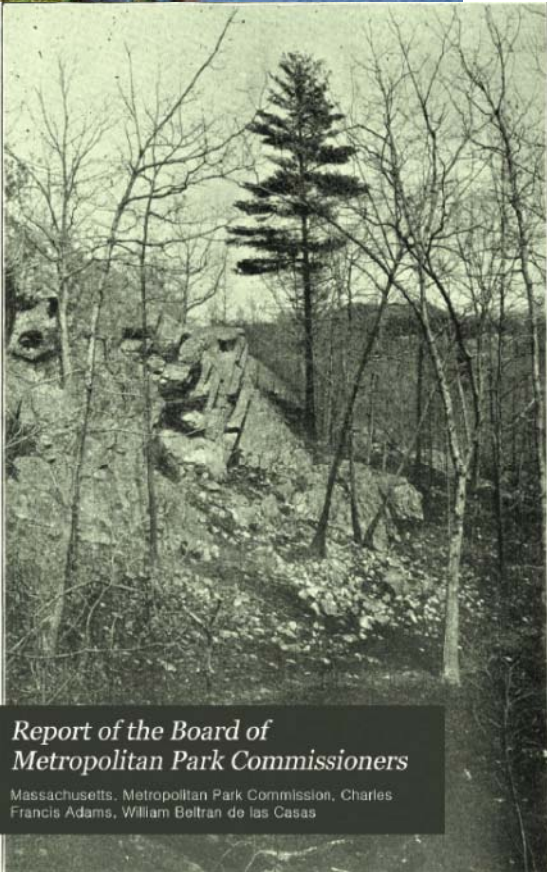
Section Index: I. Introduction  
II. General Policy Statement  
III. General Regulations

**I. Introduction**

In working to preserve the precious natural and cultural resources found within MDC properties, the MDC Reservations and Historic Sites Division management staff critically analyzes the impact potential of new or expanding recreational uses. In order to achieve the Division goals of providing quality recreational experiences, while at the same time protecting resources, the reservations have been divided into management units. Hence, particularly sensitive or vulnerable sections may have greater restrictions than other sites.



**Fells Parkways Vision Plan**  
Charrette Process Summary



*Report of the Board of  
Metropolitan Park Commissioners*

Massachusetts, Metropolitan Park Commission, Charles  
Francis Adams, William Boltran de las Casas



**DOG PARKS: BENEFITS AND LIABILITIES**

ENV5 699 – MES Capstone Seminar  
Laurel Allen  
May 29, 2007



**Department of  
Conservation and Recreation**

**Trails Guidelines and Best Practices  
Manual**



# Decision Making Process

## Pillars

**Site-Specific Data**  
**Scientific & Technical Literature**  
**Previous Planning Documents**  
**BMPs and Models**  
**Agency Input**

Potential  
Recommendations



# Decision Making Process

## Pillars

**Site-Specific Data**  
**Scientific & Technical Literature**  
**Previous Planning Documents**  
**BMPs and Models**  
**Agency Input**  
**Public Input**

Potential  
Recommendations



# Public Input

## A focus on Interests (not positions)

- Interest in having access to the scenery of the Fells including high points and water features.
- Interest in improving and stewarding the Fells. Turning passion into action.
- Interest in having the Fells natural and cultural resources honored and protected.
- Interest in enjoying the Fells without having to worry about feeling unsafe or threatened in any way.
  
- Interested in having the Fells be open and welcoming for all users.
- Interest in not having users fight for their own interests in the Fells.
- Interest in finding solitude and serenity.
- Interest in rules that make sense.
- Interest in having the rules firmly followed (and if necessary, strictly enforced).
- Interest in being in the Fells with my dog for my own safety.
- Interested in not seeing or stepping in dog waste.
  
- Interest in having room within the reservation for dogs to be able to recreate off-leash with their owners.
- Interest in being able to be in the Fells without being approached by a dog.
- Interest in having all uses allowed on all trails.
- Interest in more, and more challenging, opportunities for mountain bike recreation in the Fells.
- Interest in visiting the Fells without encountering a mountain bike.
- Interest in having hiking only trails and experiences.

# Decision Making Process

## Inputs

Data  
Scientific &  
Technical Literature  
Previous Planning  
Documents  
BMPs  
Agency Input  
Public Input

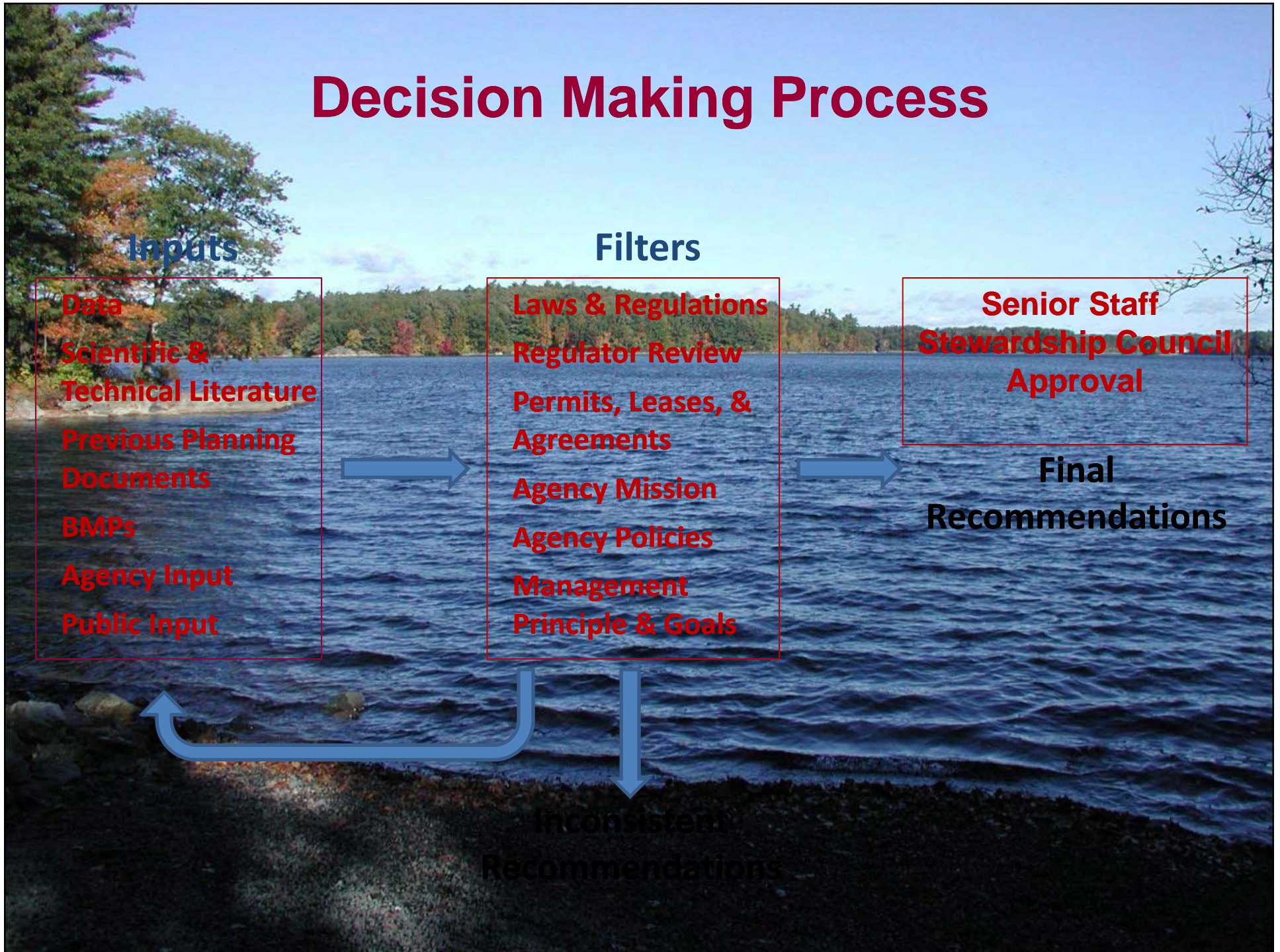
## Filters

Laws & Regulations  
Regulator Review  
Permits, Leases, &  
Agreements  
Agency Mission  
Agency Policies  
Management  
Principle & Goals

Senior Staff  
Stewardship Council  
Approval

Final  
Recommendations

Inconsistent  
Recommendations





# Land Stewardship Zoning

**Zone 1: This zone includes highly sensitive natural and cultural resources that could be degraded by typical recreation or management activities, and therefore require a focused management approach to provide adequate resource protection. Examples include rare species habitat identified as being highly sensitive to human activities, and sensitive pre-historic or historic archaeological sites.**