

Department of Conservation and Recreation

## The DCR Neponset River Greenway Corridor Completion Project

Columbia Point to The Blue Hills Reservation



Stewardship Council Meeting  
Lawrence Heritage State Park, Lynn, MA  
Friday, December 2, 2011 1:00 – 3:00 pm

Commonwealth of Massachusetts

**Governor**  
Deval L. Patrick

**Lieutenant Governor**  
Timothy Murray

**Energy and Environmental Secretary**  
Richard K. Sullivan, Jr.

**Department of Conservation and Recreation Commissioner**  
Edward M. Lambert, Jr.

Department of Conservation and Recreation

### Consultant Design Team:



**CISIS** Crosby Schlessinger Smallridge, LLC – Landscape Architects  
Deneen Crosby – Principal-in-Charge/Project Manager

**AECOM** AECOM – Structural Engineers  
Bob Hajjar – Project Engineer

**BSC GROUP** BSC Group – Civil Engineers  
Peter Reed – Project Engineer

**Epsilon** Epsilon – Permitting  
Mike Howard – Project Manager

**Nitch Engineering** Nitch Engineering – Surveyors  
Paul LeBaron – Project Surveyor




Department of Conservation and Recreation


## Neponset River Corridor TIGER Grant Application



- The full application and additional material can be found at:  
[www.env.state.ma.us/Neponset\\_River\\_Greenway\\_Corridor](http://www.env.state.ma.us/Neponset_River_Greenway_Corridor)
- The grant was submitted Oct 31, 2011
- Award is expected by March 1, 2012
- Construction complete if Grant is awarded by Fall 2015.

Department of Conservation and Recreation

## Neponset River Corridor Completion Project



Department of Conservation and Recreation

## TIGER Grant Criteria

### Primary Criteria

- State of Good Repair**  
The corridor weaves through developed urban and suburban areas.
- Economic Benefits**  
This path will create inexpensive access to employment centers, institutions of higher education, transit nodes and businesses up and down the Corridor.
- Livability**  
The Corridor Completion Project will create travel options that encourage healthier lifestyles. Mattapan has one of the highest rates of asthma, diabetes, and heart disease in the City and County.




Figure 12. The Project will improve the T app intersection at Mattapan Square which is an health performance and safety.

Location of Environmental Justice Area (EJA)	Total Population of EJA	Minority Population of EJA	Percent of Total Population that is Minority	EJA's Median Household Income as a Percent of the Regional Median Household Income
Dorchester	53,596	42,157	79%	67%
Mattapan	50,966	48,779	96%	60%


Source: American Community Survey, U.S. Census Bureau, 2007. Data for Dorchester and Mattapan from the 2007 Census of the Boston Region, Massachusetts Planning Organization, April 2007.

dcrc Department of Conservation and Recreation

## TIGER Grant Criteria

### Primary Criteria

- Environmental Sustainability**  
 For the Project DCR will make sure that the path that people walk or bike will be just as attractive and protected as the natural resources that visitors will be enjoying at the end of their trips, be it the Blue Hills to the south, the beaches of Boston Harbor to the north, or neighborhood parks along the way.
- Safety**  
 Vast majority of the new network (3.53 miles of the 4.2 miles created) will be off road. The Project will also improve eight (8) intersections.
- Job Creation/Near-Term Economic Benefit**  
 The net present value of this \$17.6 million dollar project would be \$45.2 million with a benefit cost ratio of 3.9




dcrc Department of Conservation and Recreation

## TIGER Grant Criteria

### Secondary Criteria

- Innovation**  
 This project will re-create a traditional travel corridor to meet 21<sup>st</sup> century needs. Innovative ideas include: The Canopy Walk as a way to bridge the rail tracks and grade changes while respecting the design concerns of the abutting neighborhoods.
- Partnership**  
 The Project is built on many years of carefully nurtured partnerships between neighborhoods, municipalities, business, and public agencies.




dcrc Department of Conservation and Recreation

## NEPONSET RIVER CORRIDOR

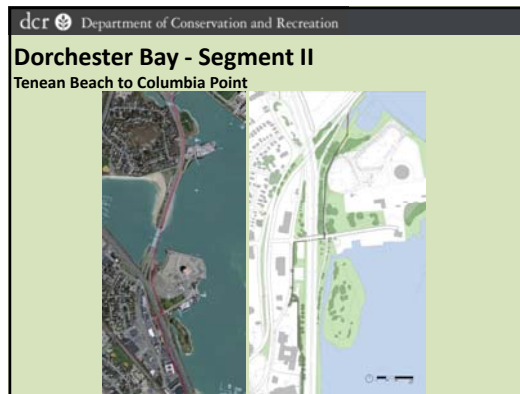
Home | Trail Map | Maps | Documents | News | FAQ | Links

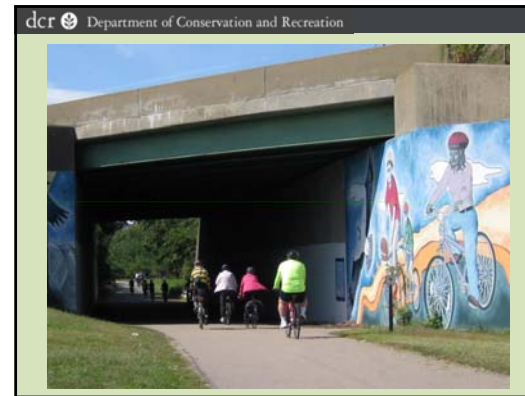
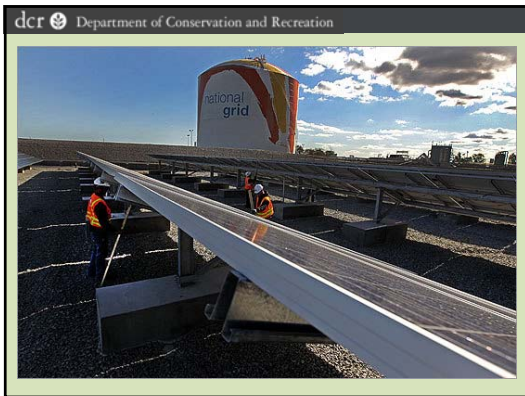
### TRAIL IMAGES

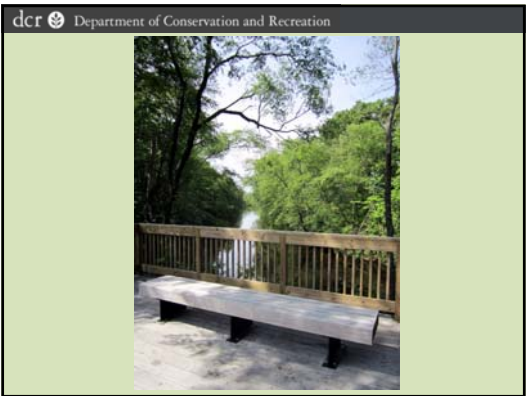
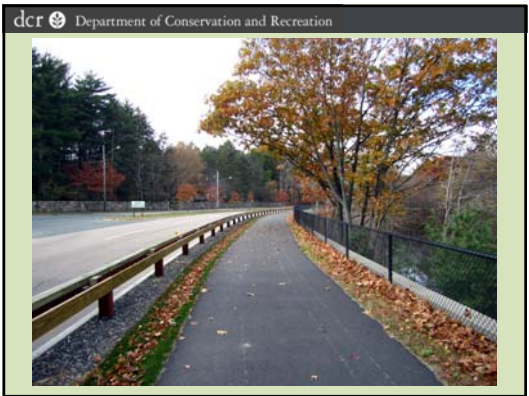
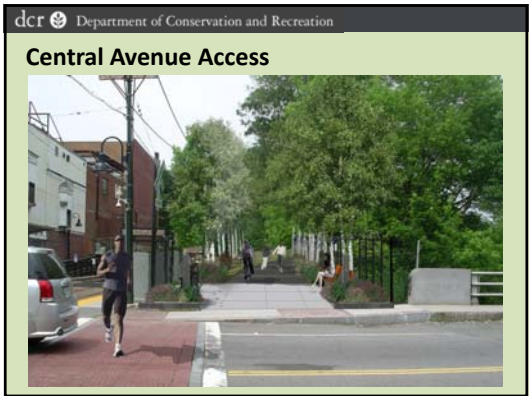
Click on the properties below to take a short walk through the existing and proposed bikeway.

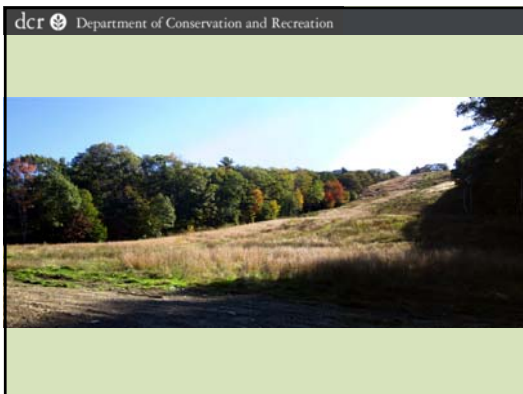
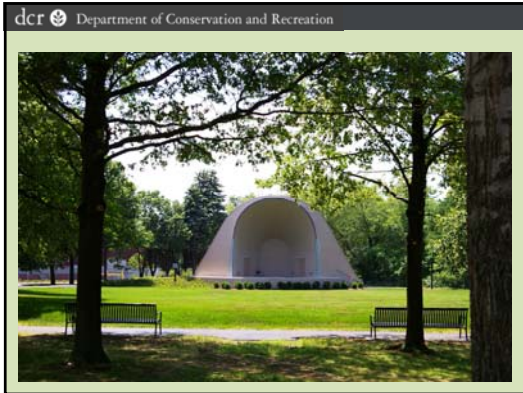


[www.env.state.ma.us/Neponset\\_River\\_Greenway\\_Corridor](http://www.env.state.ma.us/Neponset_River_Greenway_Corridor)









dcrc Department of Conservation and Recreation

### Thank you to the community for their support letters

**TIGER Grant - Elected Officials:**  
 Town of Milton, Board of Selectmen  
 City of Boston, Mayor's Office  
 Representatives Caputo, Lynch and Keating  
 Senator John Kerry  
 State Senator Brian Joyce  
 State Senator Jack Hart  
 State Representative Linda Dorcena Forry  
 State Representative Martin Walsh  
 Milton Board of Selectmen  
 City Councilor Rob Consalvo

**Community Groups:**  
 Boston Natural Areas Network  
 Mattapan Community Development Corporation  
 Mattapan Food and Fitness Coalition  
 BikeMilton Organization  
 DoTBike Organization  
 Boston Cyclists Union  
 Cedar Grove Civic Association  
 Fairmount Neighborhood Association  
 Hyde Park Neighborhood Association  
 Readville Camp Meigs Neighborhood Watch  
 Wakefield/Washington Street Association  
 Fairmount Hill Neighborhood Association  
 Southwest Boston Community Development Corporation  
 Dorchester Environmental Health Coalition

**Financial Partners:**  
 Commissioner Department of Conservation and Recreation  
 Jonathan Davis, General Manager MBTA  
 Walter Heller, Acting District Highway Director, MassDOT  
 Stop and Shop Corporation  
 National Grid

**Community Members:**  
 Tricia Teahan Poles, Dorchester Resident  
 Erica Mattison, Dorchester Resident  
 Charles Lucas, Dorchester, Elementary School Teacher Dorchester  
 Teresa Hayden, Dorchester  
 Kelly Ready, Dorchester  
 Robert Schmale, Lower Mills, Dorchester  
 Maria Lyons, Port Norfolk, Dorchester  
 Andrew Kessel, Fields Corner, Dorchester  
 Peter Jackson, Milton Planning Board member  
 Hugh Stringer, Milton  
 Margorie Jeffries, Milton  
 Tim Diehl, Real Estate Developer  
 Martin Owens, South Boston  
 Morgan Younkin, South Boston  
 Steve Murphy, South Boston  
 Michael Ball, Hyde Park  
 Patrick McClos, Hyde Park  
 Sarah Cleary, Hyde Park  
 Jodi Sperber, Boston  
 Sandy Bully, Jamaica Plain  
 Herb Nolan, Wellesley