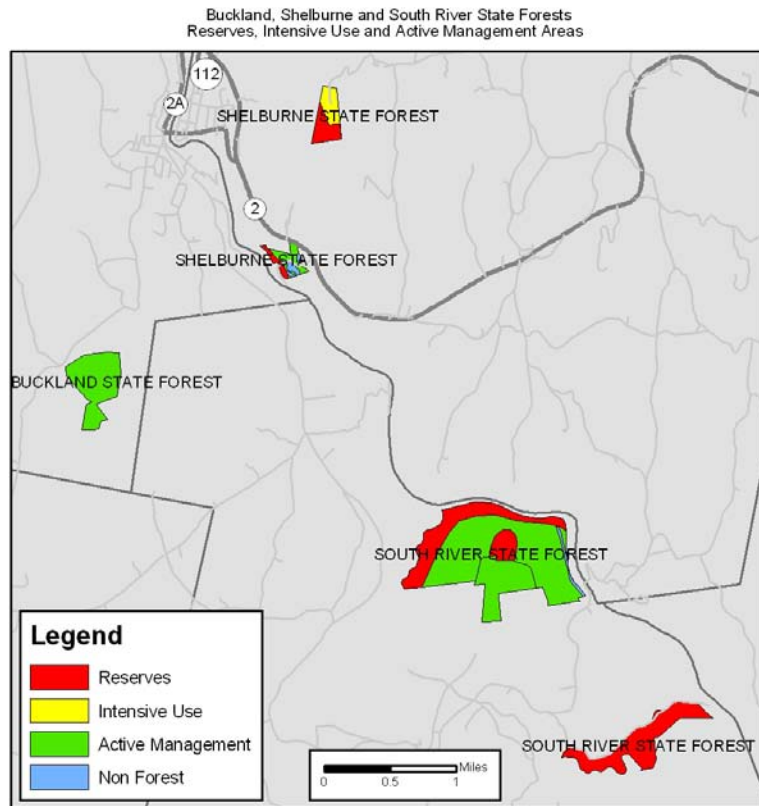
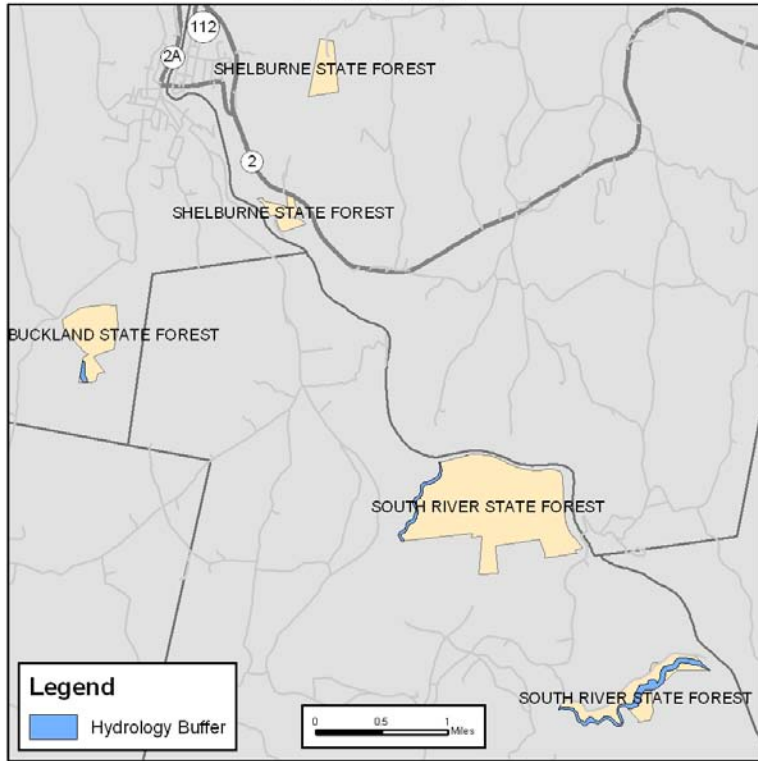


## Appendix B – Property Maps

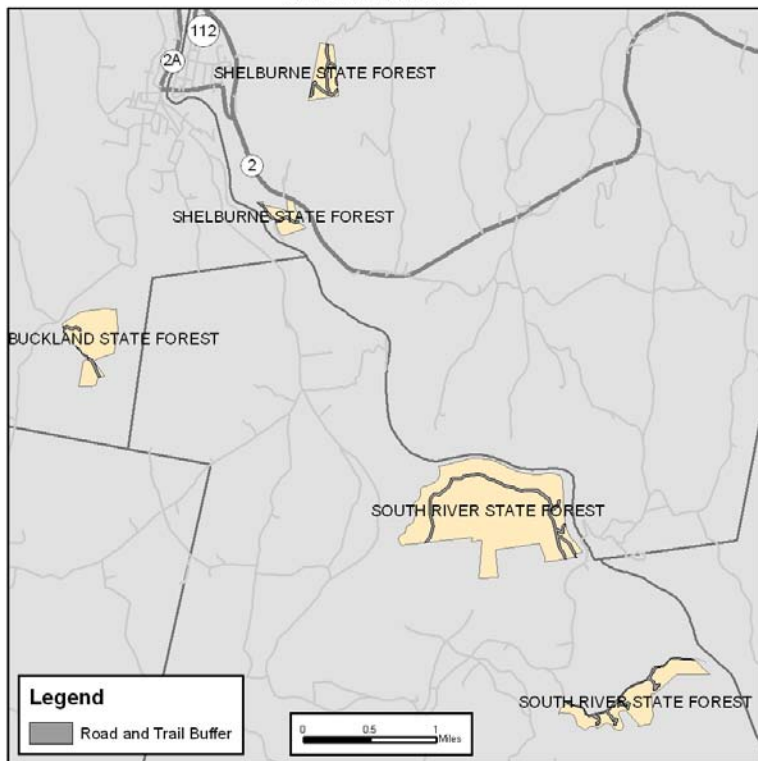
1. Buckland, Shelburne and South River State Forests – Reserves, Intensive Use and Active Management Areas
2. Buckland, Shelburne and South River State Forests – Hydrology Buffers
3. Buckland, Shelburne and South River State Forests – Road and Trail Corridors
4. Buckland, Shelburne and South River State Forests – Rare Species
5. Buckland, Shelburne and South River State Forests – Vegetation
6. Buckland, Shelburne and South River State Forests – Vegetation with Resource Overlays
7. Buckland, Shelburne and South River State Forests – Prime Soils
8. Buckland, Shelburne and South River State Forests – Archeologically Sensitive Areas
9. Buckland, Shelburne and South River State Forests – Potential Timber Harvests



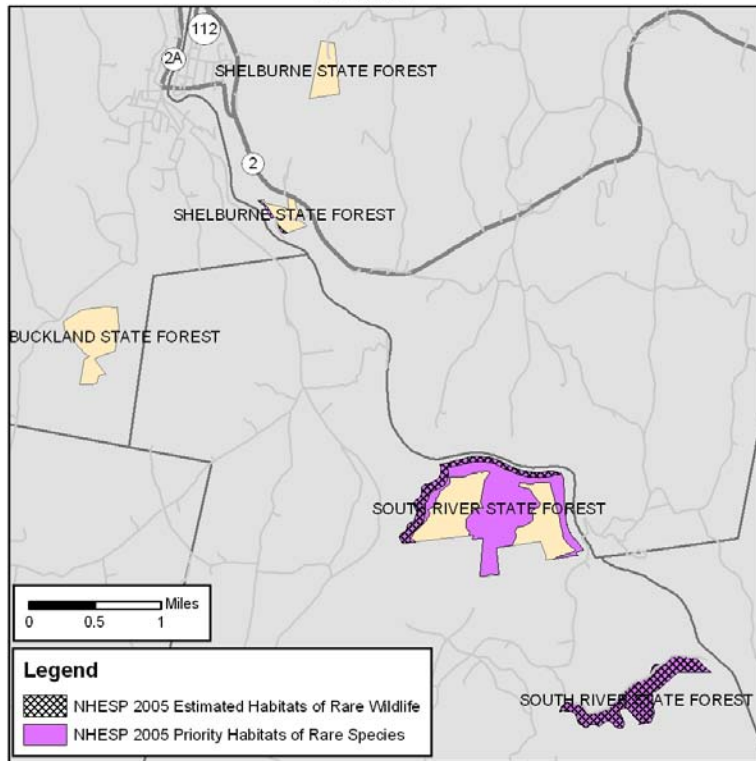
Buckland, Shelburne and South River State Forests  
100' Hydrology Buffers



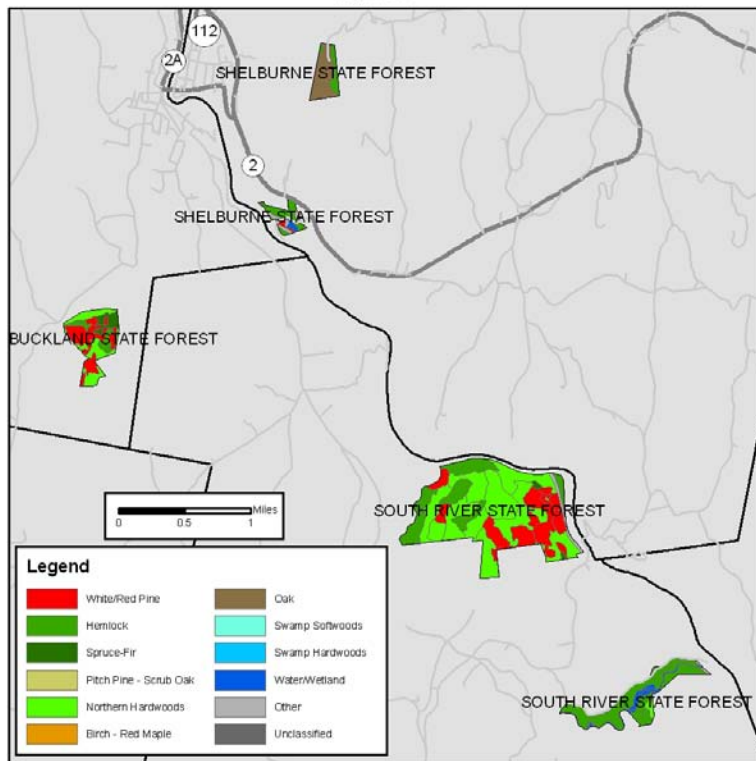
Buckland, Shelburne and South River State Forests  
50' Road and Trail Buffers



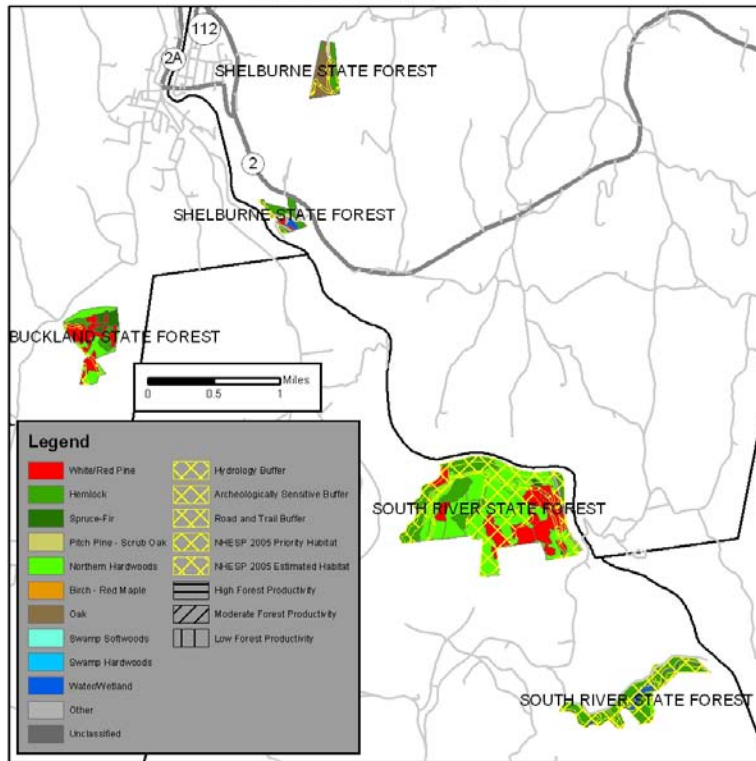
Buckland, Shelburne and South River State Forests  
Rare Species



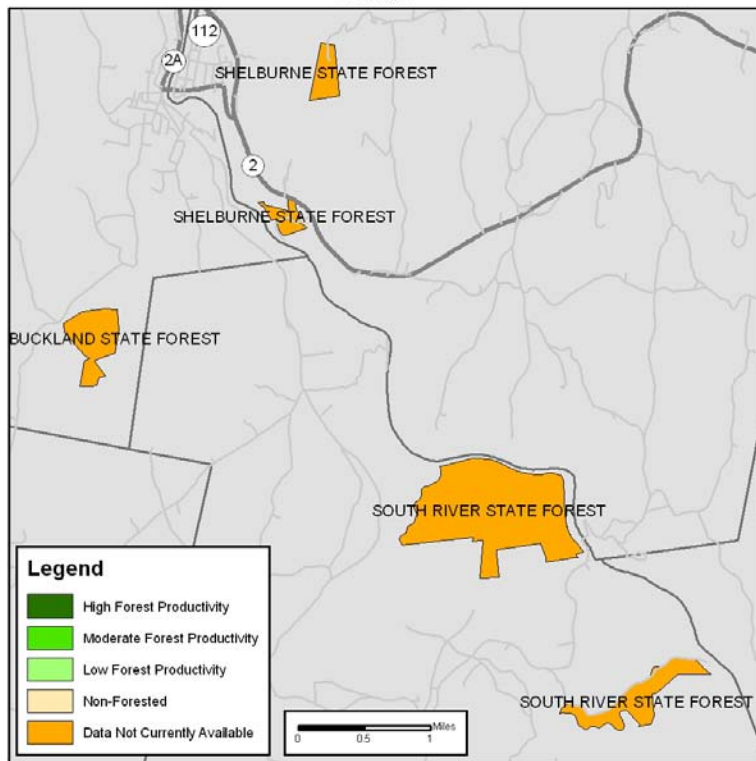
Buckland, Shelburne and South River State Forests  
Vegetation



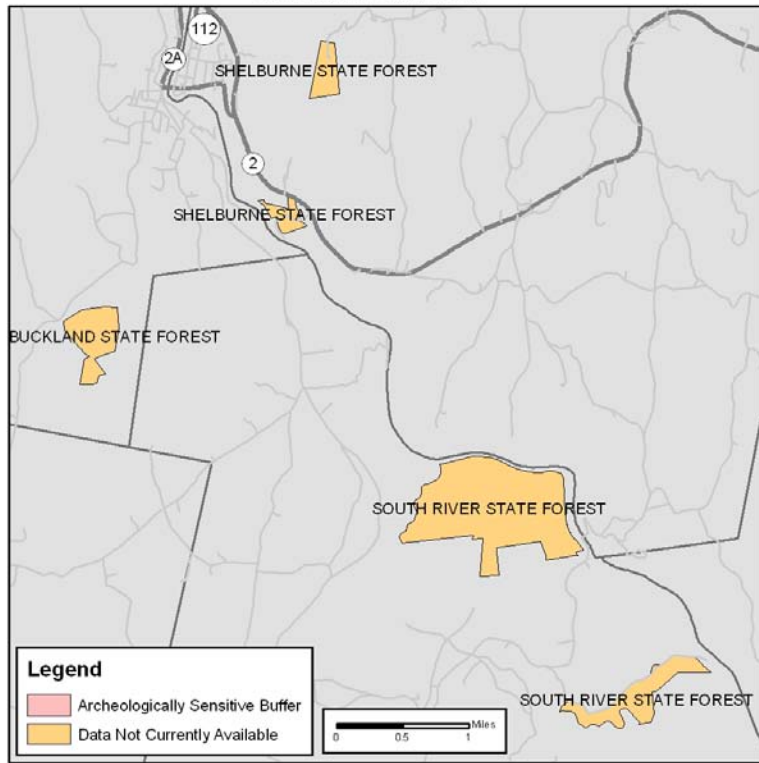
Buckland, Shelburne and South River State Forests  
Vegetation With Resource Overlays



Buckland, Shelburne and South River State Forests  
Prime Soils



Buckland, Shelburne and South River State Forests  
Archeologically Sensitive Buffer



Buckland, Shelburne and South River State Forests - Potential Timber Harvests Within Next 15 Years By Silvicultural Technique

