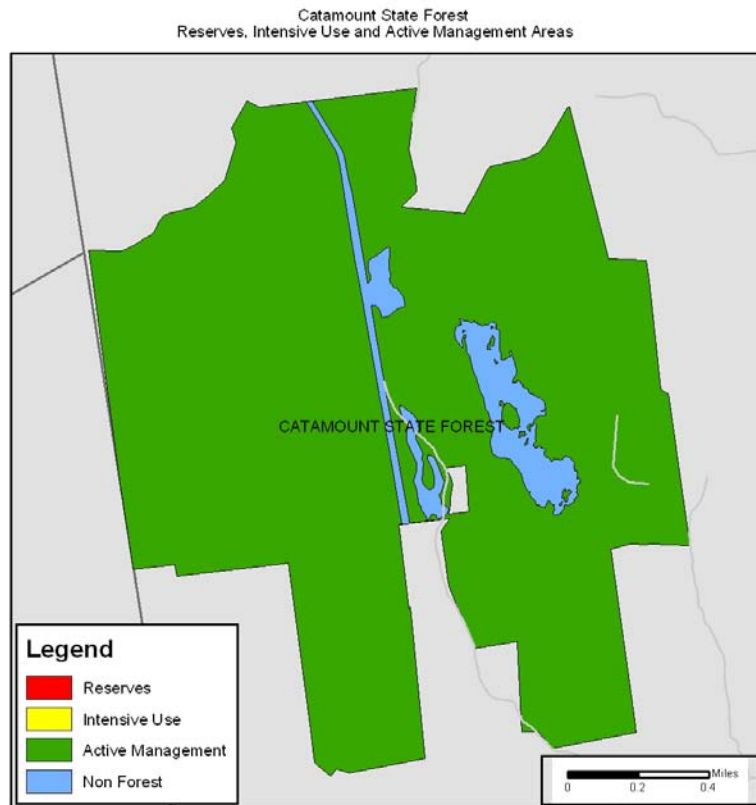


Appendix B – Property Maps

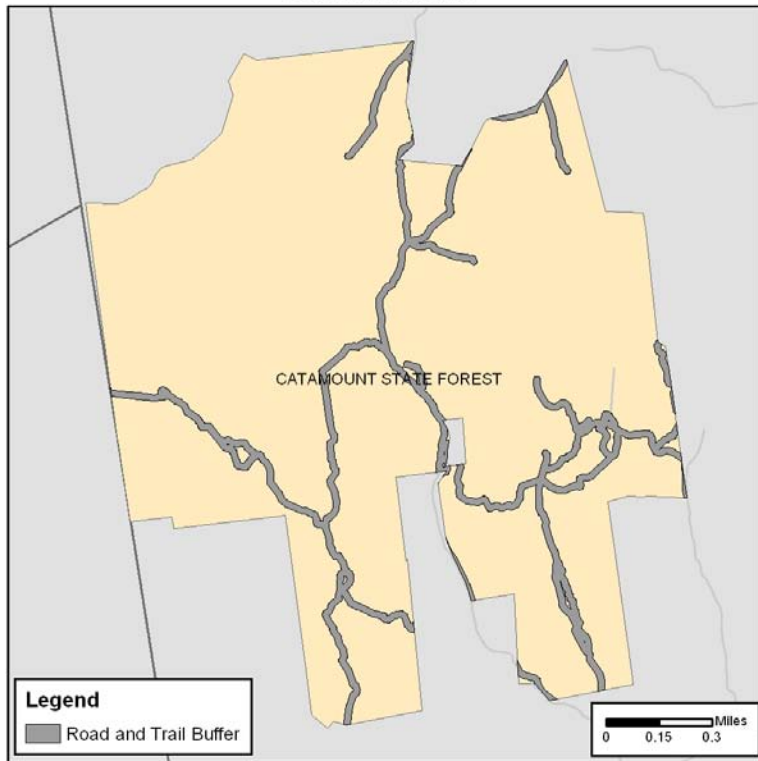
10. Catamount State Forest – Reserves, Intensive Use and Active Management Areas
11. Catamount State Forest – Hydrology Buffers
12. Catamount State Forest – Road and Trail Corridors
13. Catamount State Forest – Rare Species
14. Catamount State Forest – Vegetation
15. Catamount State Forest – Vegetation with Resource Overlays
16. Catamount State Forest – Prime Soils
17. Catamount State Forest – Archeologically Sensitive Areas
18. Catamount State Forest – Potential Timber Harvests



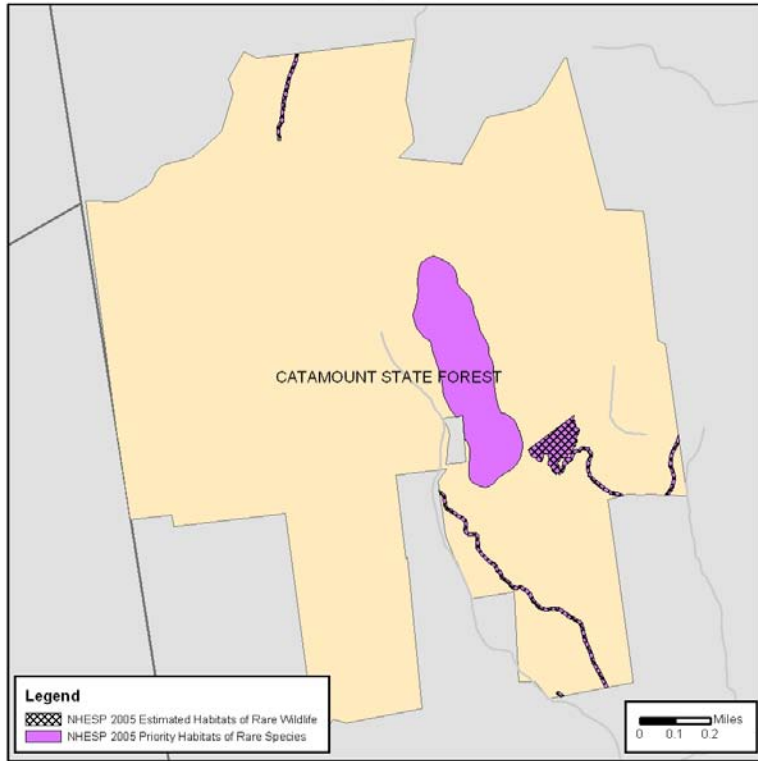
Catamount State Forest
100' Hydrology Buffers



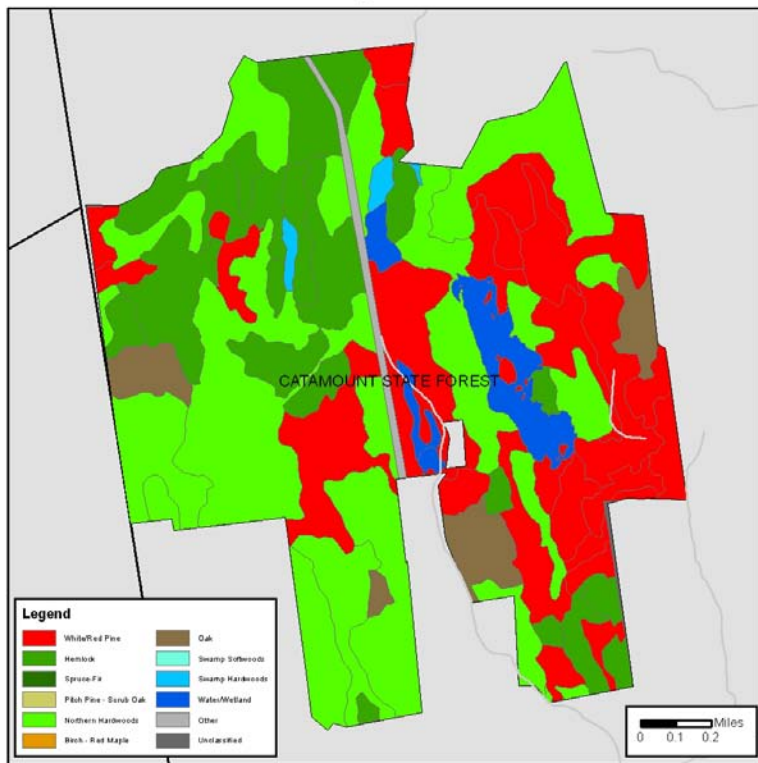
Catamount State Forest
50' Road and Trail Buffers



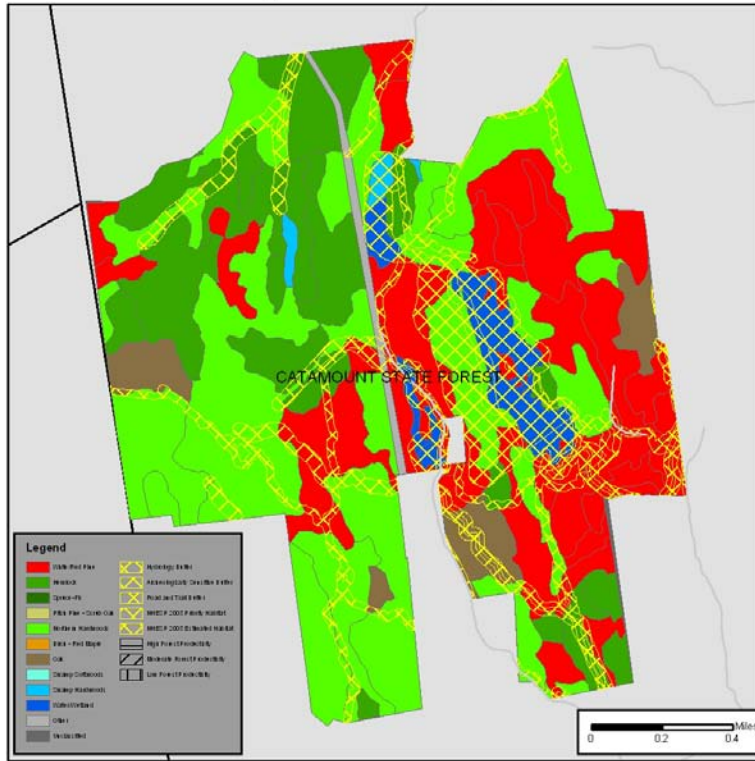
Catamount State Forest
Rare Species



Catamount State Forest
Vegetation



Catamount State Forest
Vegetation With Resource Overlays



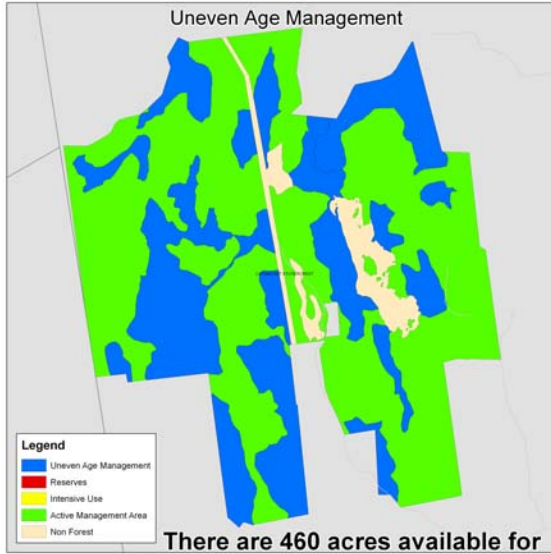
Catamount State Forest
Prime Soils



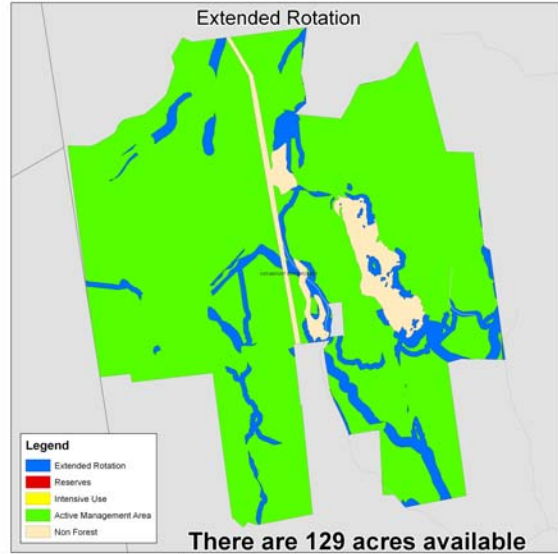
Catamount State Forest
Archeologically Sensitive Buffer



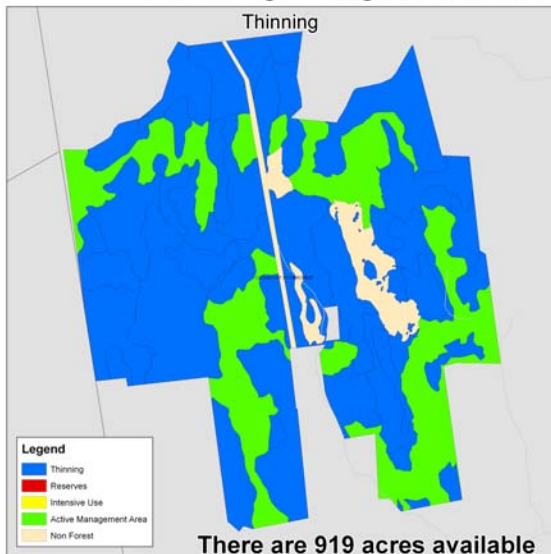
Catamount State Forest - Potential Timber Harvests Within Next 15 Years By Silvicultural Technique



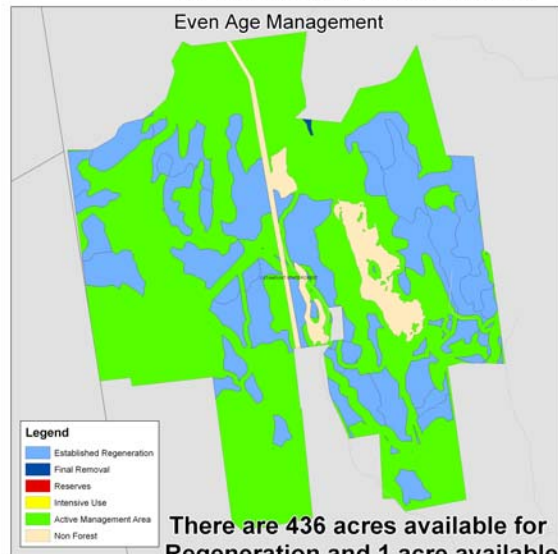
There are 460 acres available for Uneven Age Management harvests



There are 129 acres available for Extended Rotation harvests



There are 919 acres available for Thinning harvests



There are 436 acres available for Regeneration and 1-acre available for Final Removal harvests