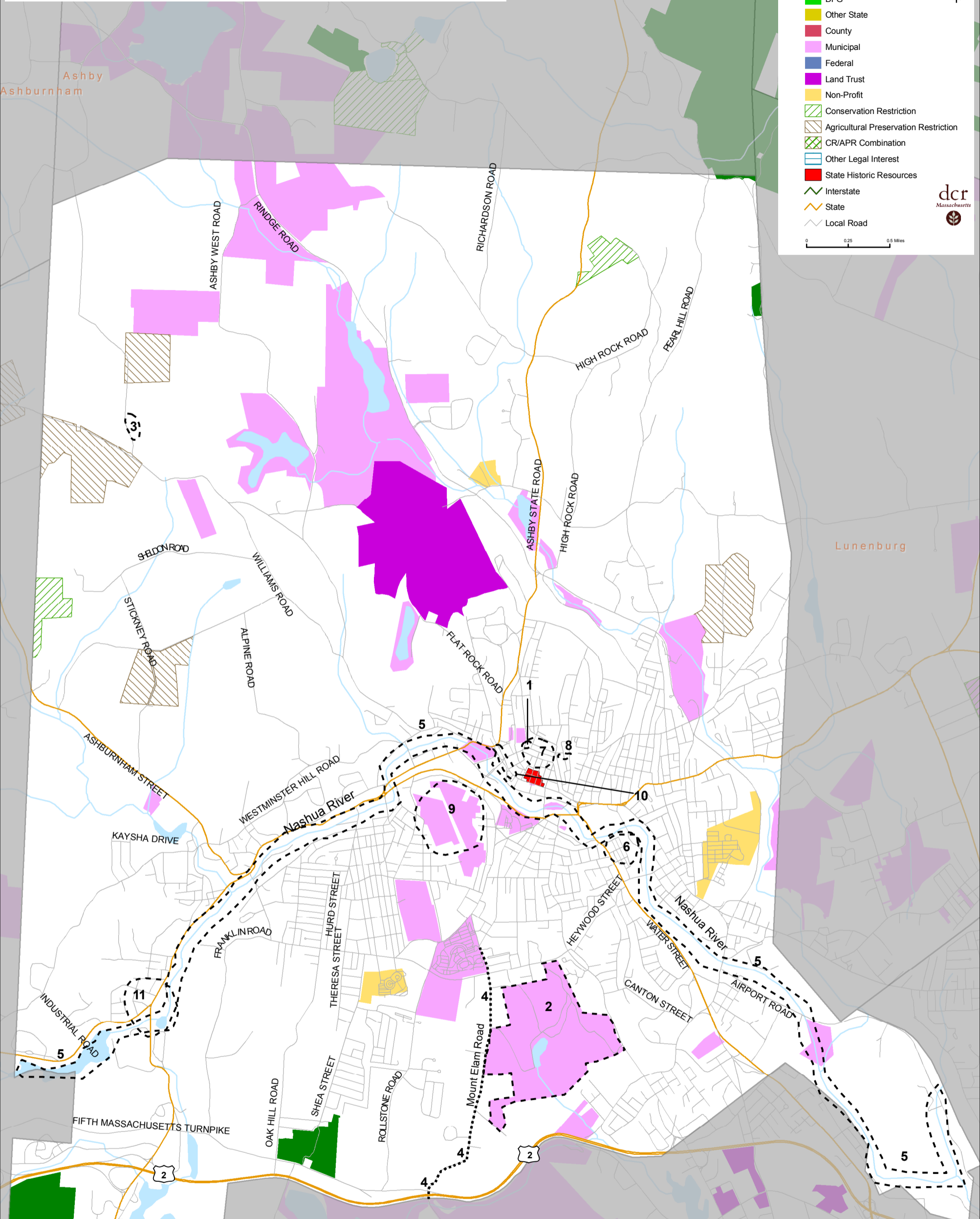
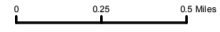


FITCHBURG OPENSOURCE & HISTORIC RESOURCES

Note: Default Legend, all categories may not appear on the map.

- DCR
- DCRS/DFG
- DFG
- Other State
- County
- Municipal
- Federal
- Land Trust
- Non-Profit
- Conservation Restriction
- Agricultural Preservation Restriction
- CR/APR Combination
- Other Legal Interest
- State Historic Resources
- Interstate
- State
- Local Road



- High Priority Heritage Landscapes**
1. Academy Street School -The Annex
 2. Cogshall Park
 3. Dean Hill Cemetery
 4. Mount Elam Road
 5. Nashua River
 6. The Patch
 7. Pleasant & Prichard Streets Neighborhood
 8. The Rapids Footpath
 9. Rollstone Hill
 10. Upper Common Area
 11. Waites Corner

