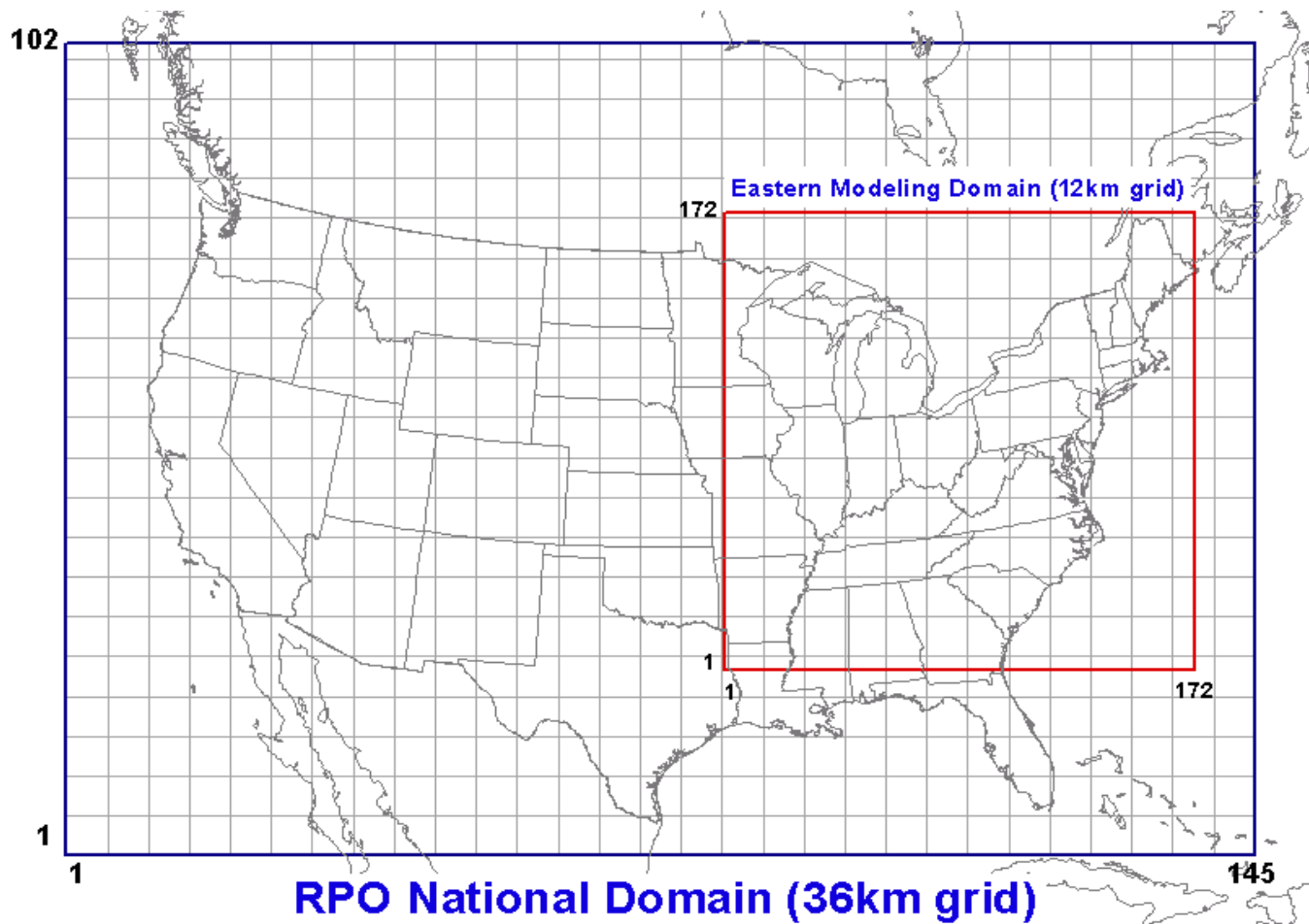


OTC 8-Hour Ozone SIP Modeling Update

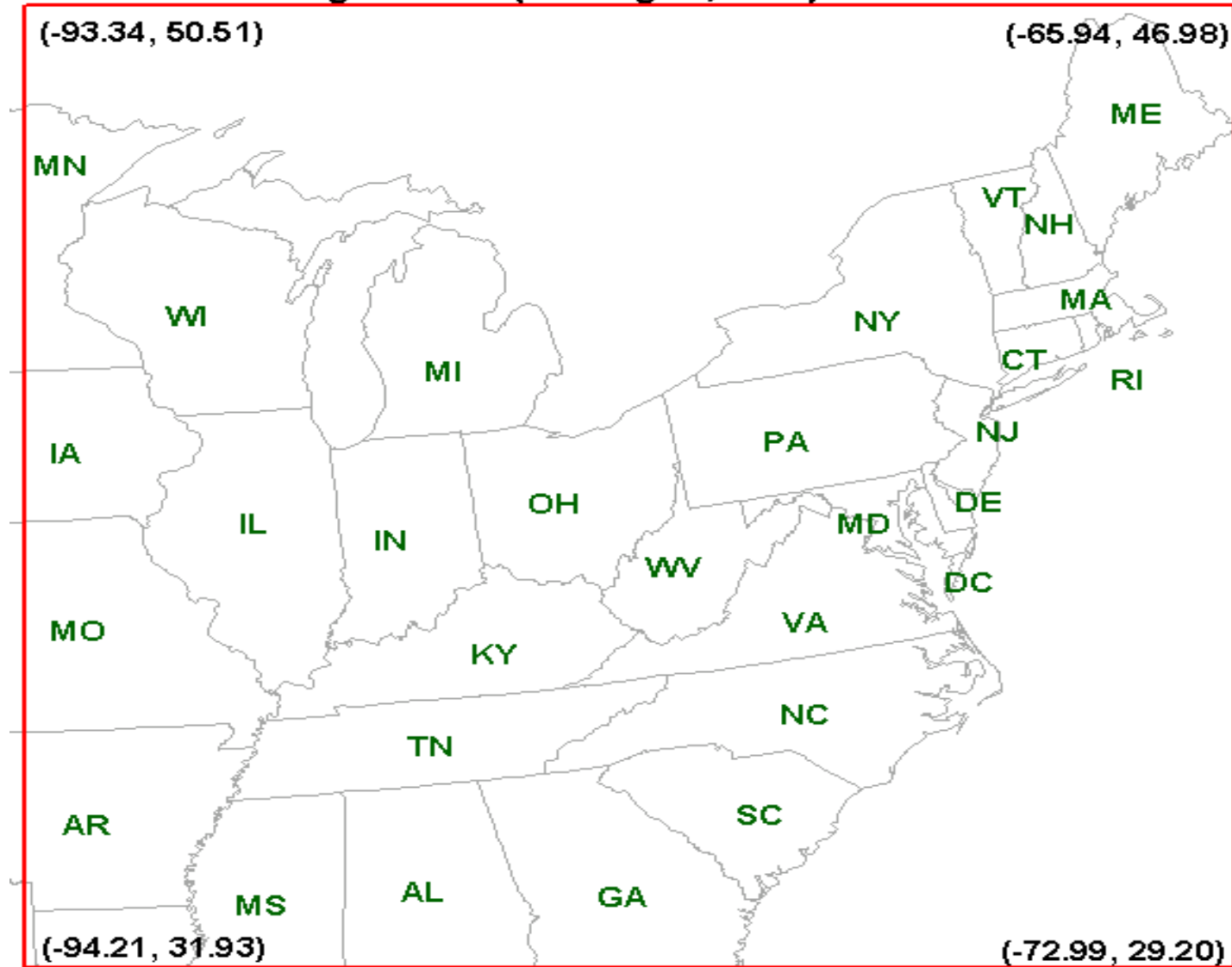
June 1, 2007

OTR Modeling Domain

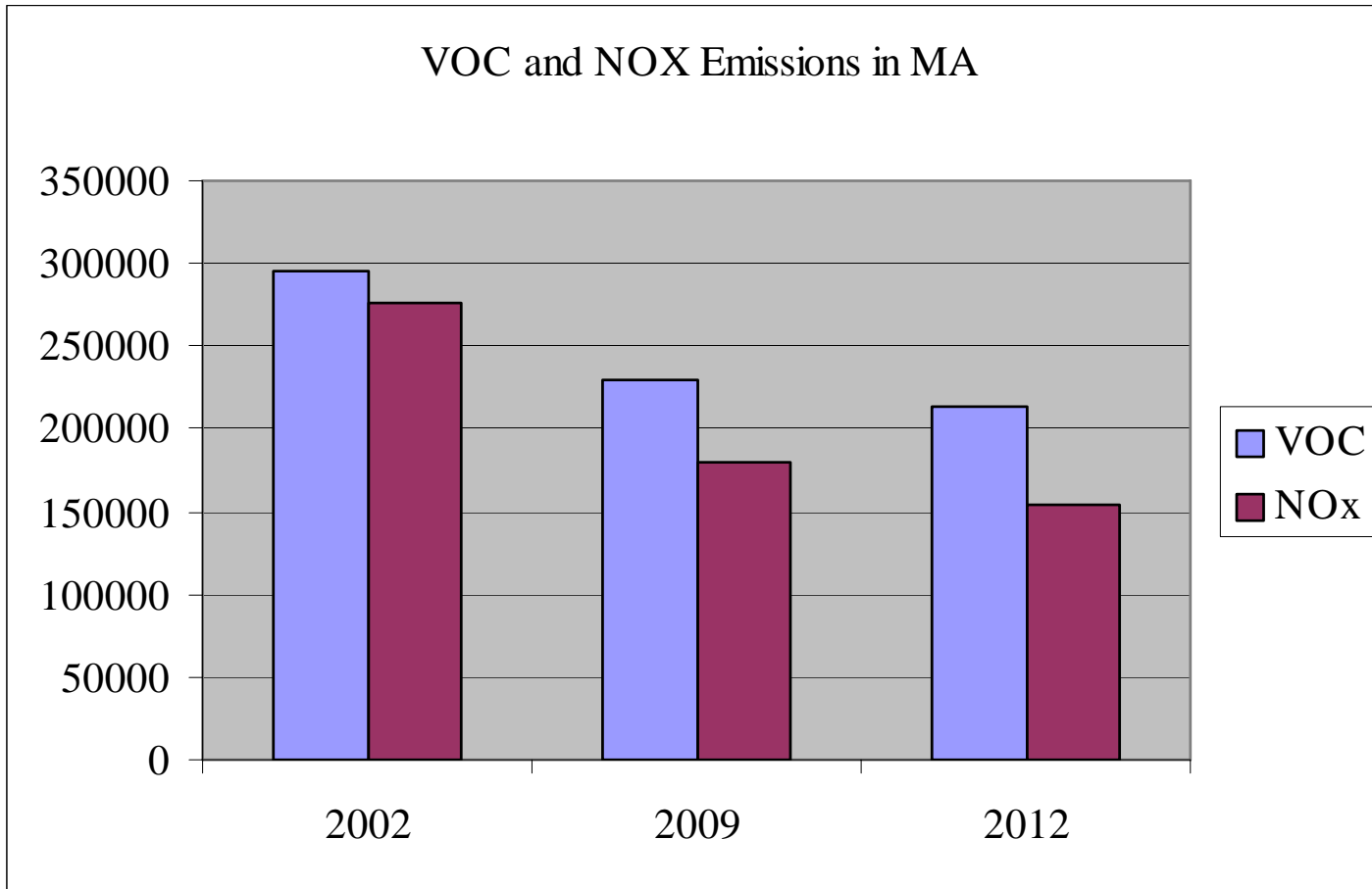


Modeling Domain for Ozone, PM2.5 and Regional Haze

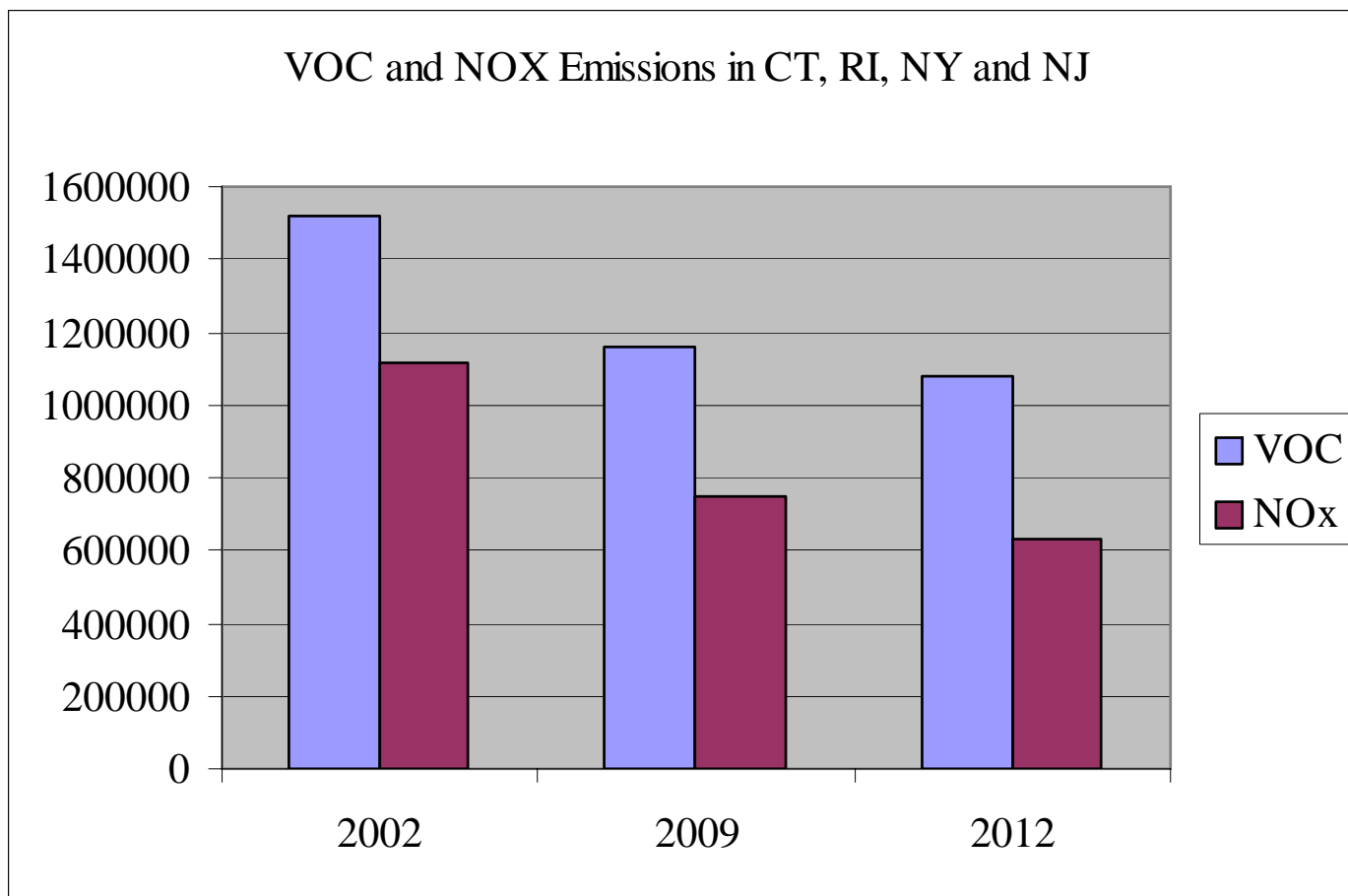
Eastern Modeling Domain (12km grid, LCC)



Emission Reductions in Massachusetts



Emission Reductions Upwind of Massachusetts

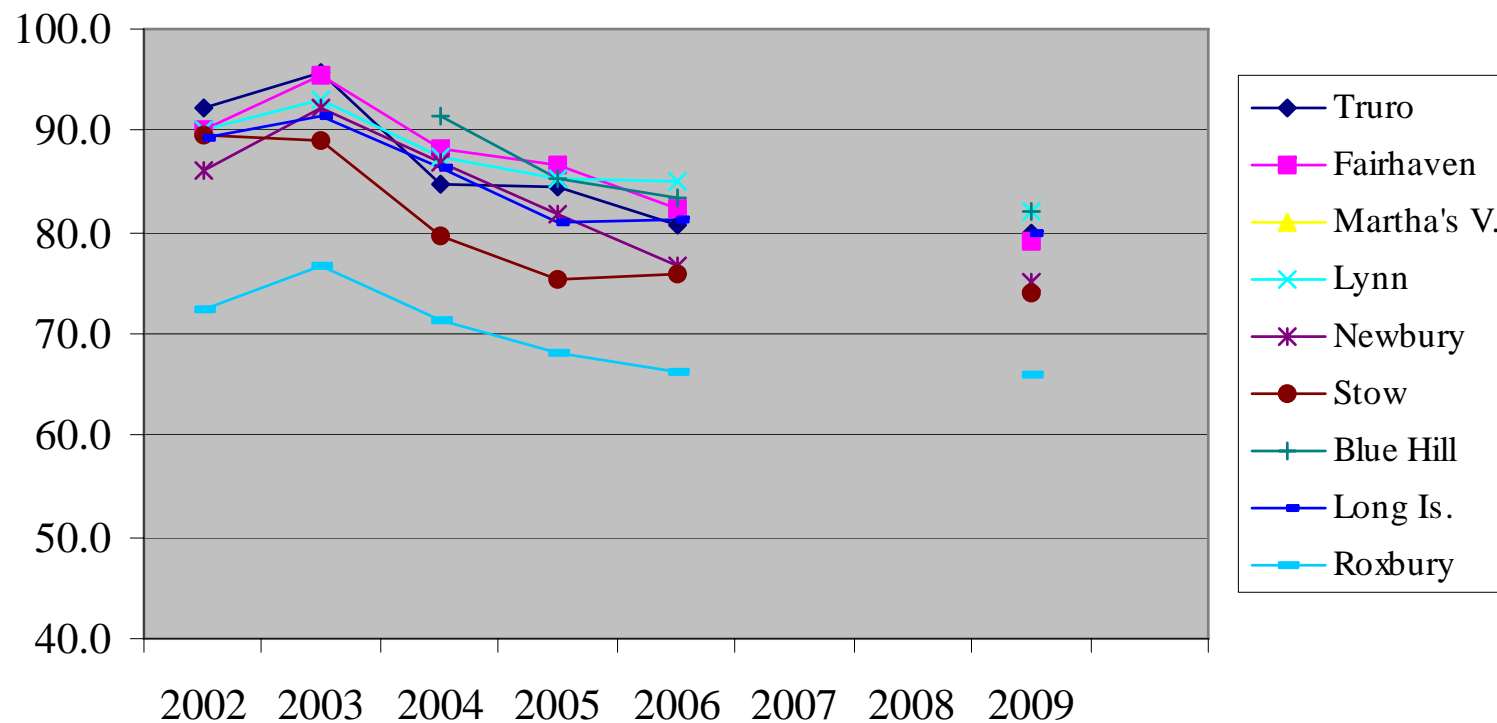


Massachusetts Ozone Designs Values

AIRS-ID	Monitor	2002 Base	2009 BOTW	2012 BOTW
250010002	Truro	92.0	80	75
250034002	Adams	83.3	73	68
250051002	Fairhaven	91.0	79	75
250090005	Lawrence	70.0	61	58
250092006	Lynn	90.0	82	79
250094004	Newbury	86.0	75	71
250130003	Agawam	83.0	72	68
250130008	Chicopee	92.0	80	75
250150103	Amherst	74.7	65	61
250154002	Ware	86.3	75	70
250171102	Stow	85.7	74	70
250213003	Milton	91.0	82	79
250250041	Boston (Long I)	88.7	80	77
250250042	Boston (Harris)	73.0	66	63
250270015	Worcester	84.0	72	67

Eastern Massachusetts Ozone Monitors

Eastern MA Design Values with Predicted 2009 Design Values



Western Massachusetts Ozone Monitors

Western MA Design Values with Predicted
2009 Design Values

