

CORRECTIVE ACTION DESIGN (CAD)

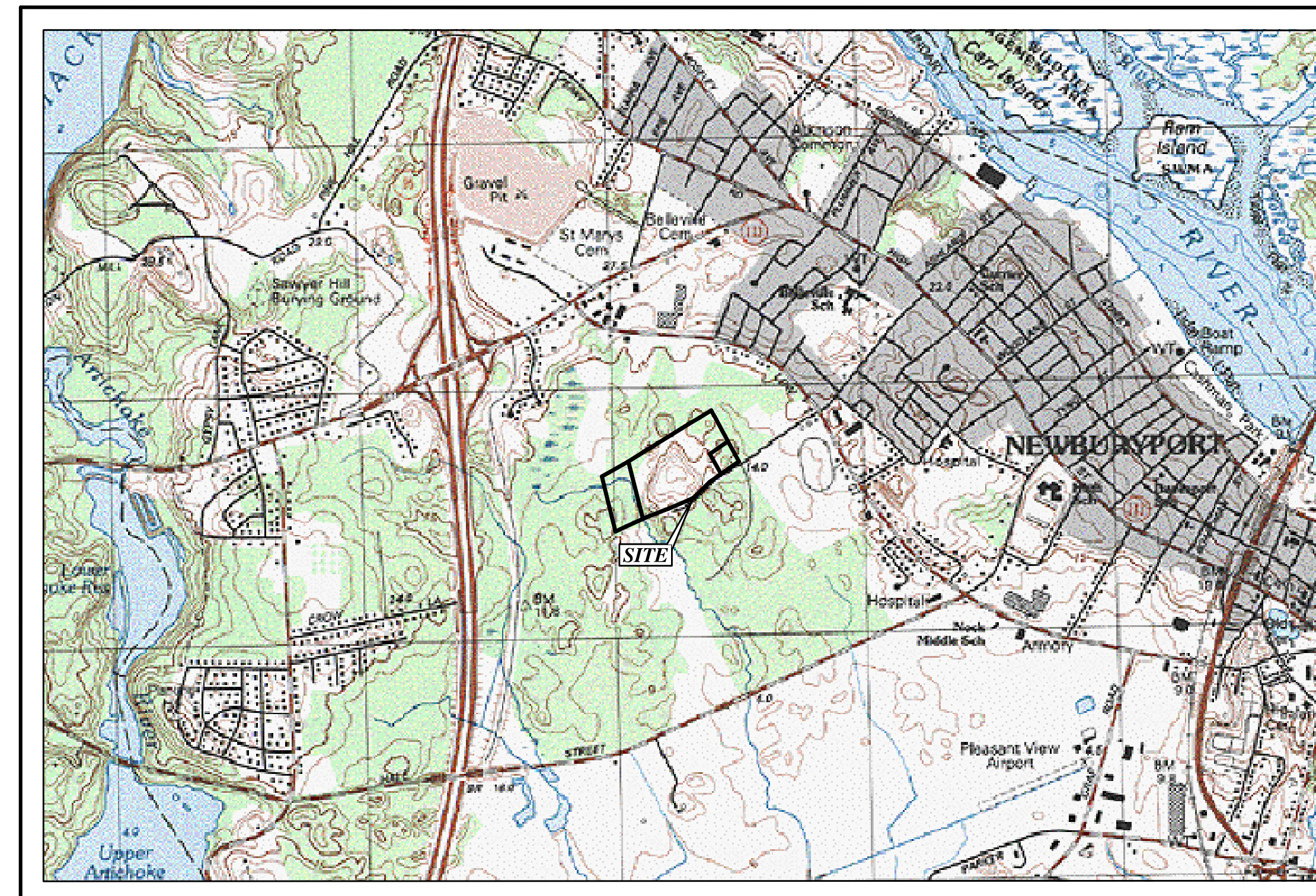
Final Landfill Closure

FOR

CROW LANE LANDFILL

NEWBURYPORT, MASSACHUSETTS

<i>INDEX OF DRAWINGS</i>	
<i>DRAWING NO.</i>	<i>SITEC DRAWING TITLES</i>
1	TITLE INDEX AND LOCUS
2	EXISTING CONDITIONS & COLLECTION SYSTEM AS-BUILT
3	FINAL GRADING & STORMWATER MANAGEMENT PLAN
4	LANDFILL GAS MANAGEMENT PLAN
4A	GAS WELL INSTALLATION and CONNECTION PLAN GAS EXTRACTION WELLS EW-7, EW-10 AND EW-13
4B	LANDFILL GAS TREATMENT SYSTEM PIPING DIAGRAM
5	LANDFILL CROSS-SECTIONS AND PERIMETER ACCESS ROAD/BERM DETAIL
6	FINAL COVER SYSTEM DETAILS AND STORMWATER MANAGEMENT SYSTEM DETAILS 1
7	STORMWATER MANAGEMENT SYSTEM DETAILS 2
8	LANDFILL GAS MANAGEMENT SYSTEM DETAILS
9	LEACHATE COLLECTION SYSTEM AS-BUILT DETAILS
10	LANDFILL CAPACITY SITE PLAN
11	PERIMETER BERM CONSTRUCTION – STAGE 1 PREPARATION PLAN
12	PERIMETER BERM CONSTRUCTION – STAGE 2 PREPARATION PLAN
13	PERIMETER BERM CONSTRUCTION – STAGE 3 PREPARATION PLAN
14	WESTERLY PERIMETER BERM CONSTRUCTION – SECTIONS & PROFILE
15	SOUTHERLY PERIMETER BERM CONSTRUCTION – SECTIONS & PROFILE
CORNERSTONE ENVIRONMENTAL GROUP, LLC	
1	HORIZONTAL GAS COLLECTION SYSTEM SITE PLAN
2	GAS DETAILS



LOCUS MAP

REFERENCE: USGS QUADRANGLE, NEWBURYPORT
SCALE 1"=1,500'

Prepared For:
New Ventures Associates, LLC

Prepared By:

SITEC
ENVIRONMENTAL

Civil and Environmental Engineering
Land Use Planning and Surveying
Hazardous and Solid Waste Consultants

769 Plain Street, Unit C
Marshfield, MA 02050
PHONE (781) 319-0100
FAX (781) 834-4783

AMENDED CAD SUBMISSION, PLAN REVISIONS
REVISION DATE: AUGUST 26, 2009
REVISION DATE: SEPTEMBER 30, 2009