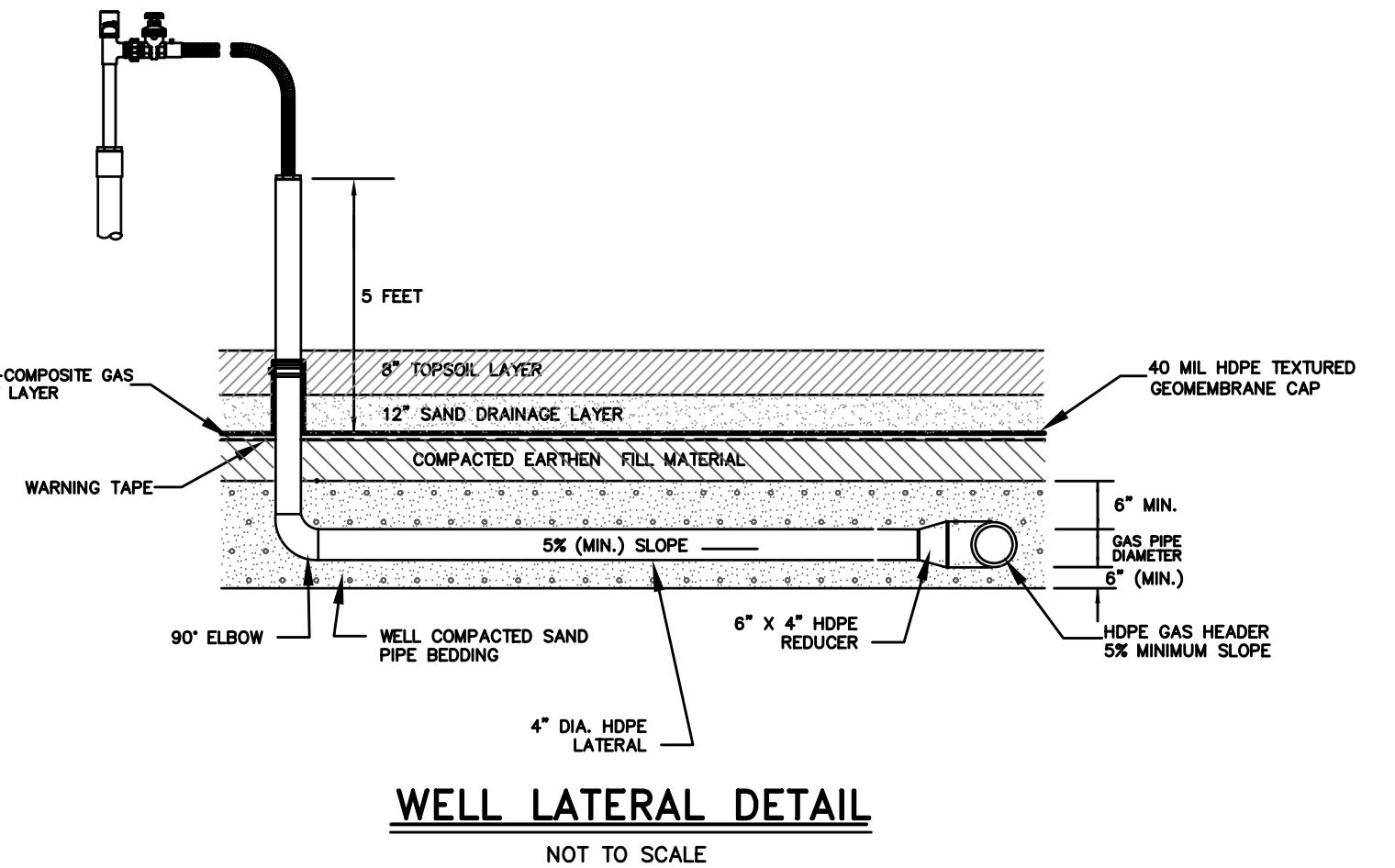
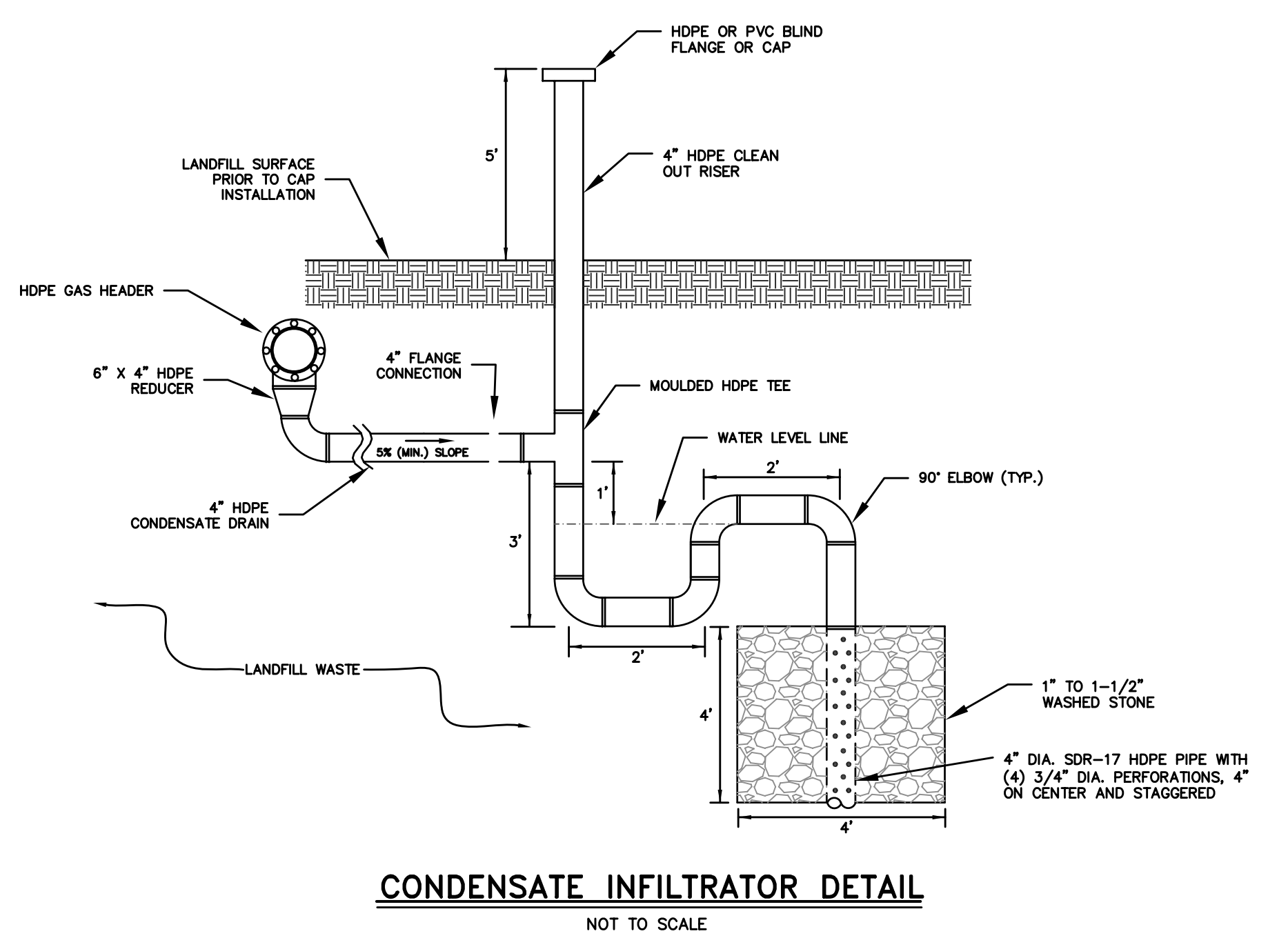
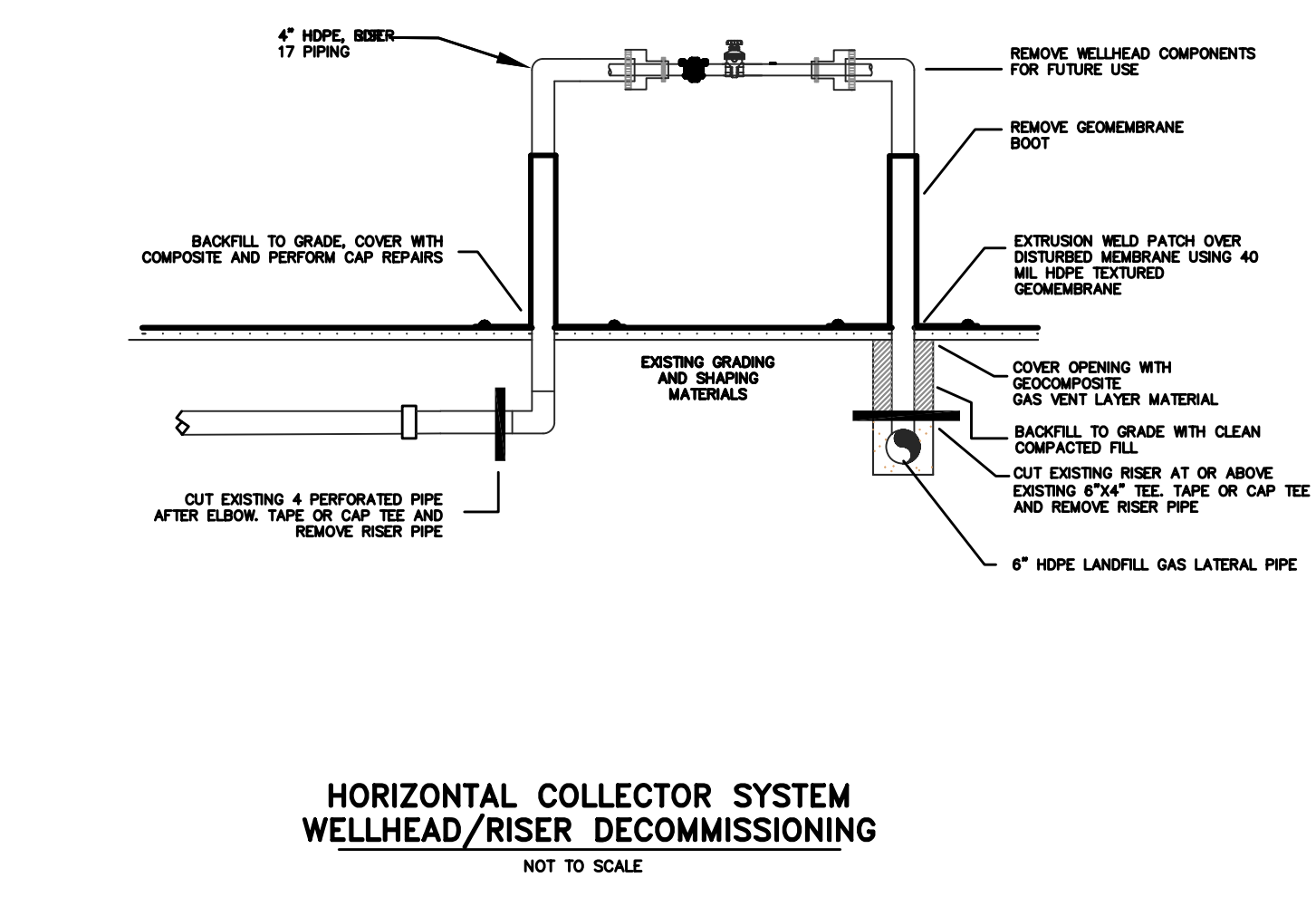
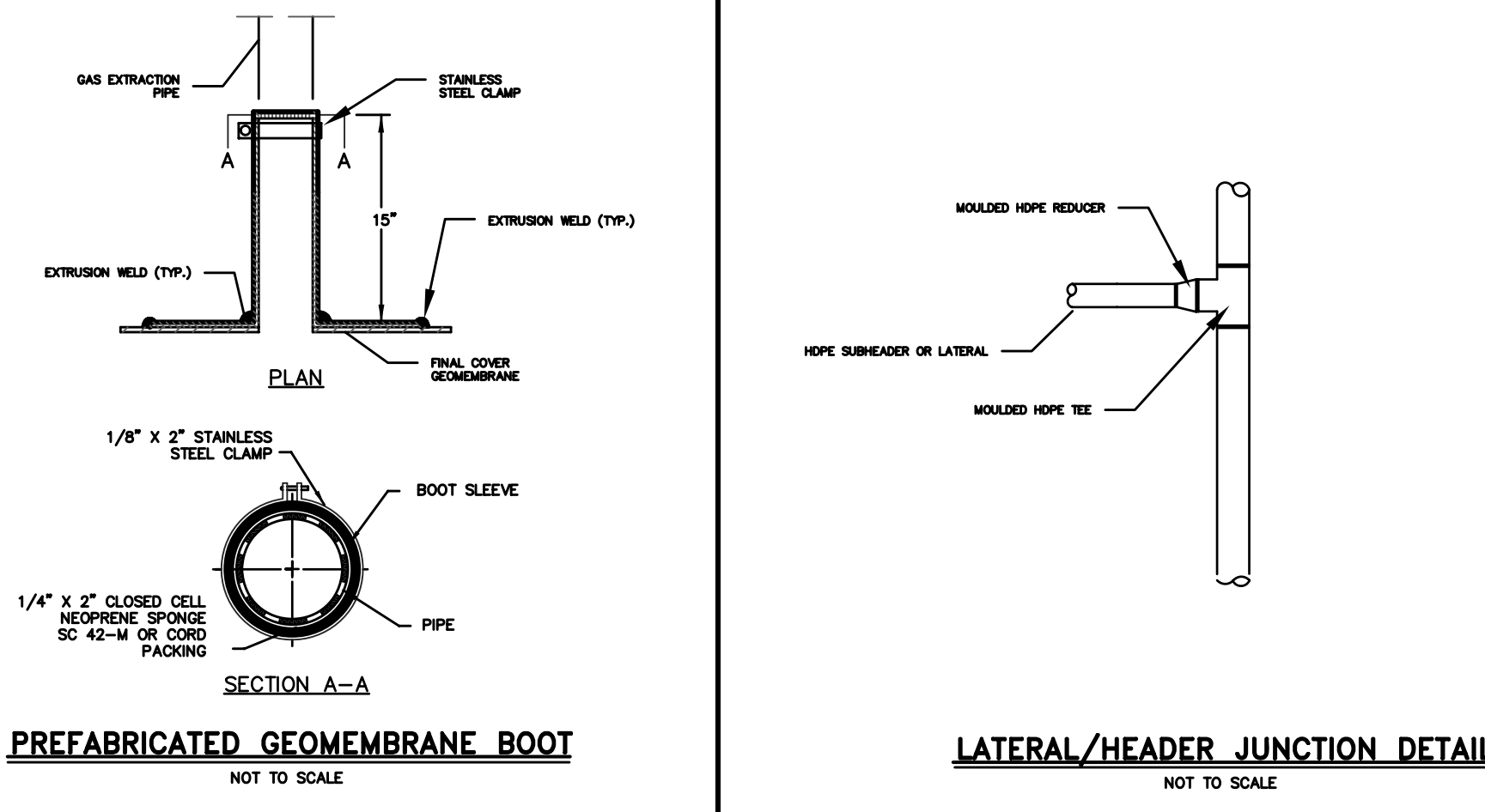
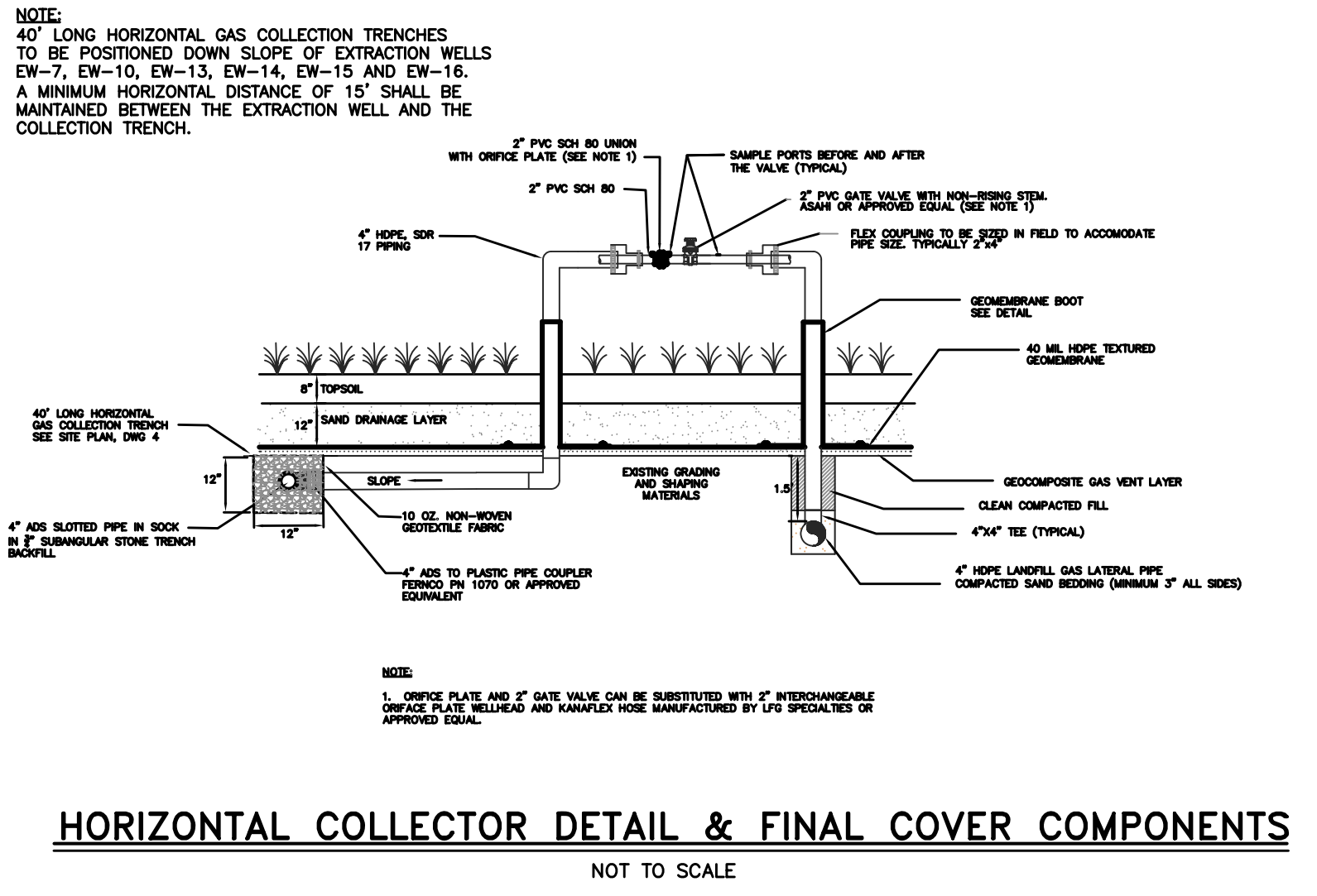
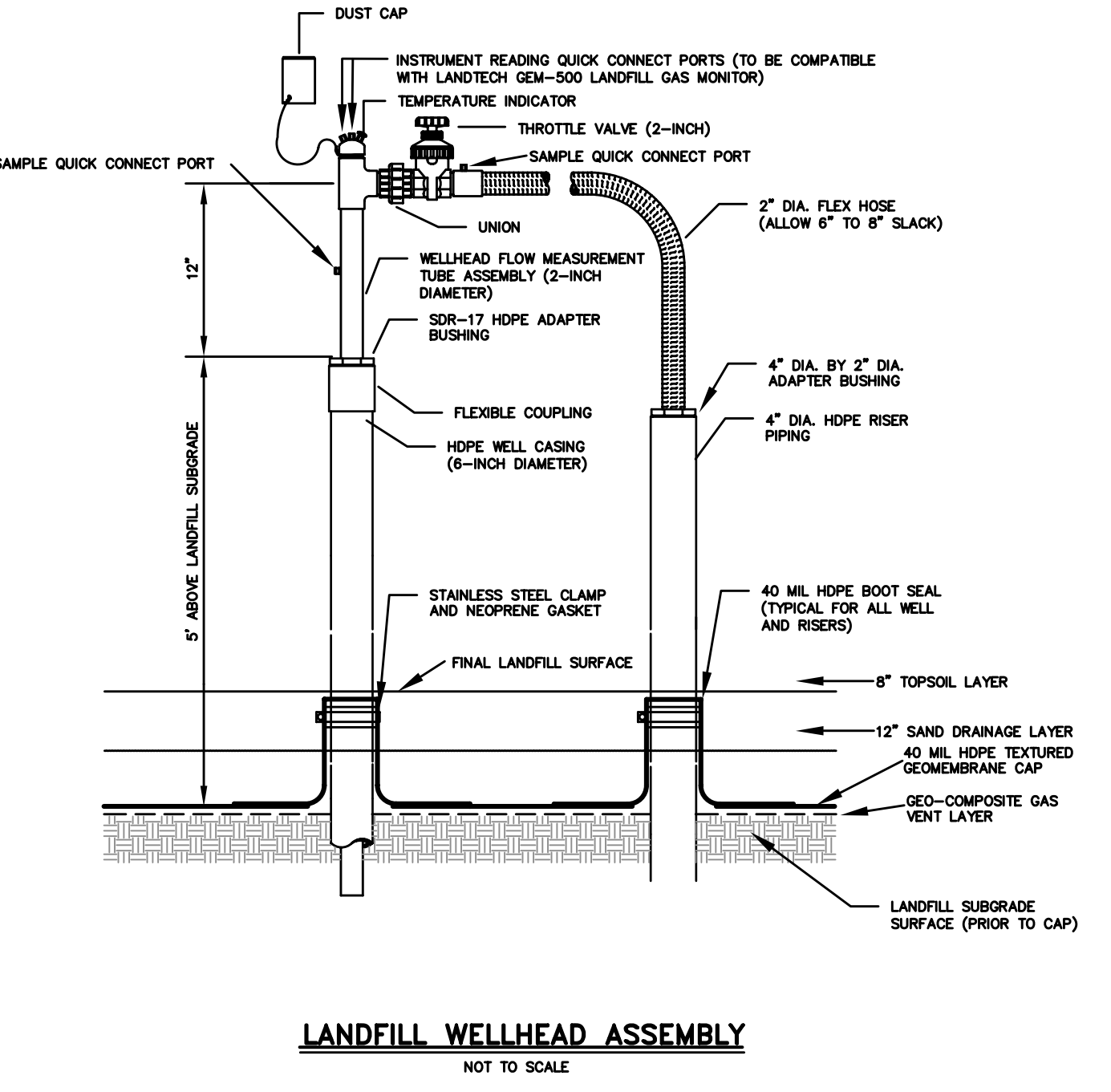
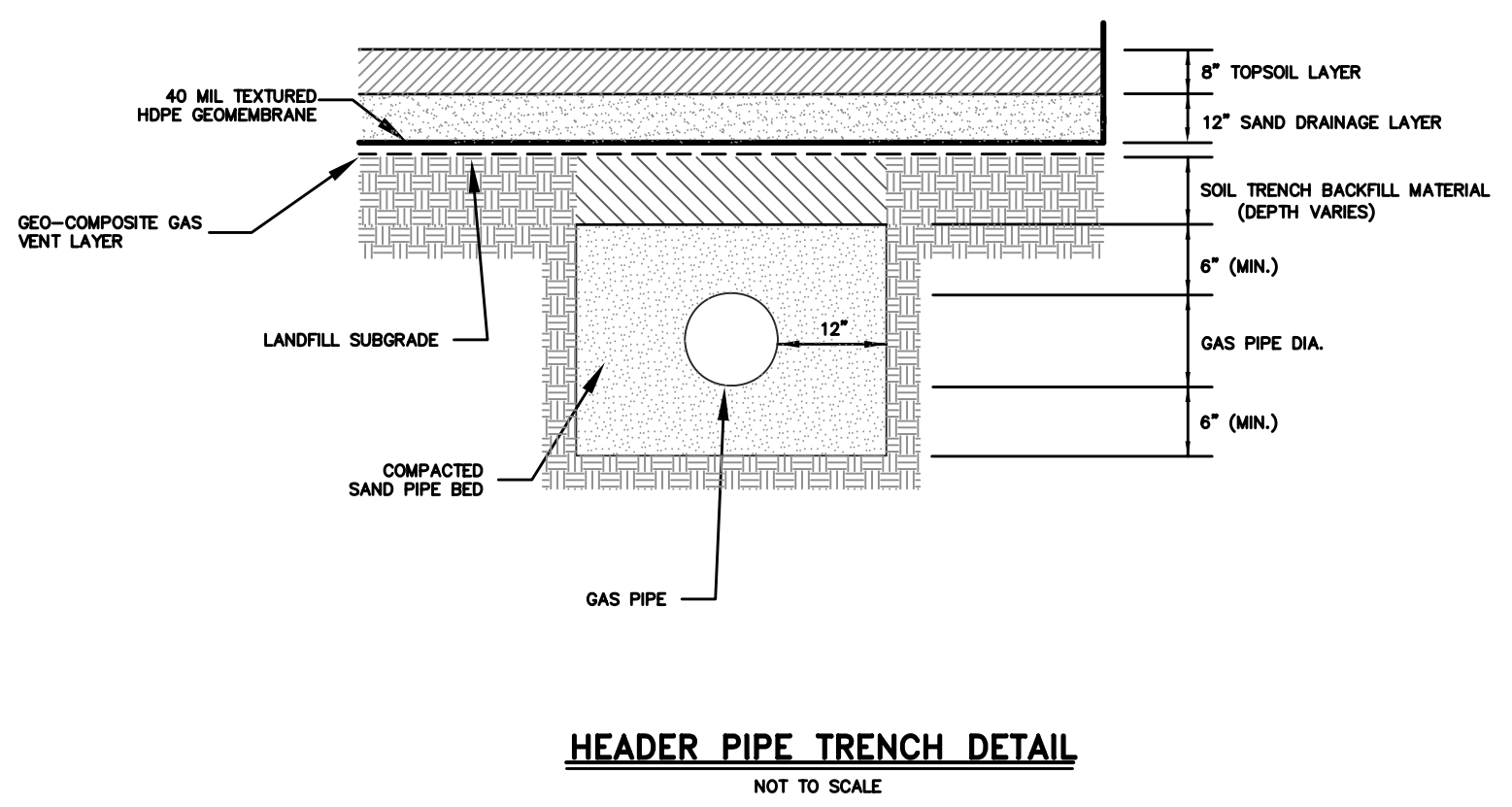


GAS EXTRACTION WELL DEPTH SCHEDULE

| GAS WELL NUMBER | FINAL COVER SYSTEM SUBGRADE EL. (APPROX.) | BOTTOM OF LANDFILL ELEVATIONS (APPROX.) | BOREHOLE DRILL DEPTH (FEET) | PERFORATED PIPE LENGTH (IN FEET) | SOLID PIPE LENGTH (FEET) (INCLUDING RISER) |
|-----------------|---|---|-----------------------------|----------------------------------|--|
| EW-14 | 118.0 | 48.0 | 70.0 | 61.0 | 13.0 |
| EW-15 | 100.0 | 45.0 | 55.0 | 46.0 | 13.0 |
| EW-16 | 119.0 | 45.0 | 74.0 | 65.0 | 13.0 |



| Revised Details per Cornerstone Design | Added Detail for Composite Layer Gas Collection Beneath Membrane | ADDED SAMPLE PORTS, DIMENSIONS AND NOTATIONS TO TRENCH DETAIL | AMENDED CAD SUBMISSION PER DEP REQUEST | WELLHEAD DECOMMISSIONING DETAIL AND OTHER NOTATIONS |
|--|--|---|--|---|
| 12/20/06 | 6/21/07 | 6/27/07 | 8/26/08 | 9/30/08 |

AS SHOWN
date: MAR. 3, 2006
drawn: JAC
checked: MQ
approved: ARQ
drawing title: 8

project: CORRECTIVE ACTION DESIGN
CROW LAKE LANDFILL
NEWBURYPORT, MASSACHUSETTS
client: NEW VENTURES ASSOCIATES, L.L.C.
drawing title: LANDFILL GAS MANAGEMENT SYSTEM DETAILS