





















COLONY NAME, TOWN	Roseate Tern			Common Tern			Arctic Tern			Least Tern			Black Skimmer			Laughing Gull			Censusing Agency <sup>c</sup>
	No. pairs	M <sup>a</sup>	P <sup>b</sup>	No. pairs	M	P	No. pairs	M	P	No. pairs	M	P	No. pairs	M	P	No. pairs	M	P	
Horseneck Beach, Westport	0			0			0			0			0			0			MAS, LCES
Speaking Rock, Westport	0			11	A	-	0			0			0			0			Cole, MAS
Jug Rock, Westport	0			0			0			0			0			0			Cole, MAS
Cockeast Pd.-Acoaxet, Westport	0			0			0			0			0			0			TNCRI
Richmond Pd., Westport	0			0			0			0			0			0			TNCRI
Bay Point, S. Swansea	0			0			0			0			0			0			Waring
Pasque I., Gosnold	0			0			0			12	A	-	0			0			MDFW, Hatch
Nashawena I., Gosnold	0			0			0			8 <sup>f</sup>			0			0			MDFW, Hatch
Penikese I., Gosnold	76 (8)	N (N)	0.79 fl./pr.	758 (975)	N (N)	1.36 fl./pr.	2 <sup>g</sup>	N	0	0			0			0			MDFW
Cuttyhunk I., Gosnold	no data																		
<b>MARTHA'S VINEYARD</b>																			
Eastville Beach, Oak Bluffs	0			0			0			18	N	1	0			0			MAS
Harthaven Beach, Oak Bluffs	0			0			0			0			0			0			MAS
Sylvia State Beach, Oak Bluffs	0			0			0			8 (14)	N (N)	2	0			0			MAS
Sarson I., Sengekontacket Pd., Oak Bluffs	0			0			0			0			0			0			MAS
Haystack Pt., Sengekontacket Pd., Edgartown	0			260	A	0-1	0			0			0			0			MAS
Little Beach, Edgartown	0			0			0			0 (168)	N	0	0			0			MAS
Cape Poge Elbow, Edgartown	0			0			0			0			0			0			TTOR

COLONY NAME, TOWN	Roseate Tern			Common Tern			Arctic Tern			Least Tern			Black Skimmer			Laughing Gull			Censusing Agency <sup>c</sup>
	No. pairs	M <sup>a</sup>	P <sup>b</sup>	No. pairs	M	P	No. pairs	M	P	No. pairs	M	P	No. pairs	M	P	No. pairs	M	P	
Little Neck, Edgartown	0			0			0			0			0			0			TTOR
East Beach-Dike Bridge, Edgartown	0			0			0			0			0			0			TTOR
Poucha Pond, Edgartown	0			0			0			24 (17)	N (N)	0	0			0			TTOR
Wasque, Edgartown	0			0			0			0			0			0			TTOR
Norton Beach ("Katama"), Edgartown	0			0			0			0 (16)	(N)	1	0			0			MAS
Edgartown Great Pd., Edgartown	0			0			0			0			0			0			MVLBC, MAS
Oyster Pd., Edgartown	0			0			0			0			0			0			MAS
Watcha Pd., West Tisbury	no data																		
Quansoo Area (Long Pt. Wildlife Refuge, Tisbury Great Pond, W. Tisbury & Black Point Pond, Chilmark)	0			6 (0)	A	0	0			6 (17)	A (N)	0	0			0			MAS, MVLBC, TTOR
Lamberts Cove- James Pd., W. Tisbury	0			0			0			0			0			0			MAS
Chilmark Pd., Chilmark	0			0			0			0			0			0			MAS, MVLBC
Stonewall Beach, Chilmark	0			0			0			7	E	0	0			0			MAS
Long Beach, Aquinnah & Squibnocket Beach, Chilmark	0			0			0			6	N	0	0			0			MAS
Nomans Land, Chilmark	0			2	C <sup>h</sup>	2	0			0			0			0			USFWS
Lobsterville (incl. "Dogfish Bar"), Aquinnah	0			0			0			9	N	1	0			0			MAS
Menemsha Pd., Aquinnah-Chilmark (encompasses Edys	0			0			0			0			0			0			MAS

COLONY NAME, TOWN	Roseate Tern			Common Tern			Arctic Tern			Least Tern			Black Skimmer			Laughing Gull			Censusing Agency <sup>c</sup>
	No. pairs	M <sup>a</sup>	P <sup>b</sup>	No. pairs	M	P	No. pairs	M	P	No. pairs	M	P	No. pairs	M	P	No. pairs	M	P	
I., Chilmark)																			
Tashmoo, Tisbury	0			0			0			7	N	0	0			0			MAS
Mink Meadows, Tisbury	0			0			0			12	N	3	0			0			MAS
<b>NANTUCKET</b>																			
Great Point (including "The Galls"), Nantucket	0			1	N	0	0			276	N	0	0			0			TTOR
Coskata-Coatue, Nantucket	0			0			0			0			0			0			NCF, TTOR
Squam Head & Pond, Nantucket	0			0			0			0			0			0			NCF
Quidnet (including Sesachacha Pd.), Nantucket	0			0			0			7 (40)	N (E)	3	0			0			MAS
Quaise, Nantucket	0			0			0			0			0			0			NCF
Siasconset (Sankaty-Low Beach), Nantucket	0			0			0			57 (21)	N (N)	1	0			0			NMCRD
Tom Nevers Head, Nantucket	no data																		
Surfside, Nantucket	0			0			0			0			0			0			NMCRD
Cisco Beach- Hummock Pond, Nantucket	0			0			0			0			0			0			NCF
Esther I.-Smith Pt., Nantucket	19 <sup>d</sup> (6 <sup>d</sup> )	A (A)	0	66	A	1	0			360	A	1	0			0			NMCRD
Eel Point, Nantucket	0			0			0			0 (26)	N	2	0			0			NCF
Tuckernuck I., Nantucket	0			0			0			0			0			0			TLT, Veit
Muskeget I., Nantucket	2 <sup>d</sup>			5	N	0	0			1	N (A)	0	0			0			Veit

COLONY NAME, TOWN	Roseate Tern			Common Tern			Arctic Tern			Least Tern			Black Skimmer			Laughing Gull			Censusing Agency <sup>c</sup>
	No. pairs	M <sup>a</sup>	P <sup>b</sup>	No. pairs	M	P	No. pairs	M	P	No. pairs	M	P	No. pairs	M	P	No. pairs	M	P	
<b>TOTAL 2005 NESTING PAIRS</b>	<b>1,503</b>			<b>15,447</b>			<b>6</b>			<b>2,657</b>			<b>5</b>			<b>1,312</b>			
TOTAL 2004 NESTING PAIRS	1,524			16,372			6			2,691			6			1,322			
PERCENT CHANGE FROM 2004	-1.4			-5.6			0.0			-1.3			-16.7			-0.8			

<sup>a</sup> Method: A = adult count; E = partial/extrapolated count; N = nest count. See text of “Methods” for more details.

<sup>b</sup> Productivity: 0 = none; 1 = poor; 2 = fair to good; 3 = excellent. Quantitative estimates are given as fledglings/nest or fledglings/pair.

<sup>c</sup> In addition to the names of towns, counties, and individuals, the following abbreviations are used: MDCR=Massachusetts Department of Conservation & Recreation; MDFW=Massachusetts Division of Fisheries & Wildlife; ECGA=Essex County Greenbelt Association; LCES=Lloyd Center for Environmental Studies; MAS=Massachusetts Audubon Society-Coastal Waterbird Program; MVLBC=Martha’s Vineyard Land Bank Commission; NCF=Nantucket Conservation Foundation; NMCRD=Town of Nantucket Marine and Coastal Resources Department; NPS=National Park Service; TNCRI=The Nature Conservancy - Rhode Island; TLT=Tuckernuck Land Trust, TTOR=The Trustees of Reservations; URI=University of Rhode Island; USFWS=US Fish & Wildlife Service; WBNERR=Waquoit Bay National Estuarine Research Reserve.

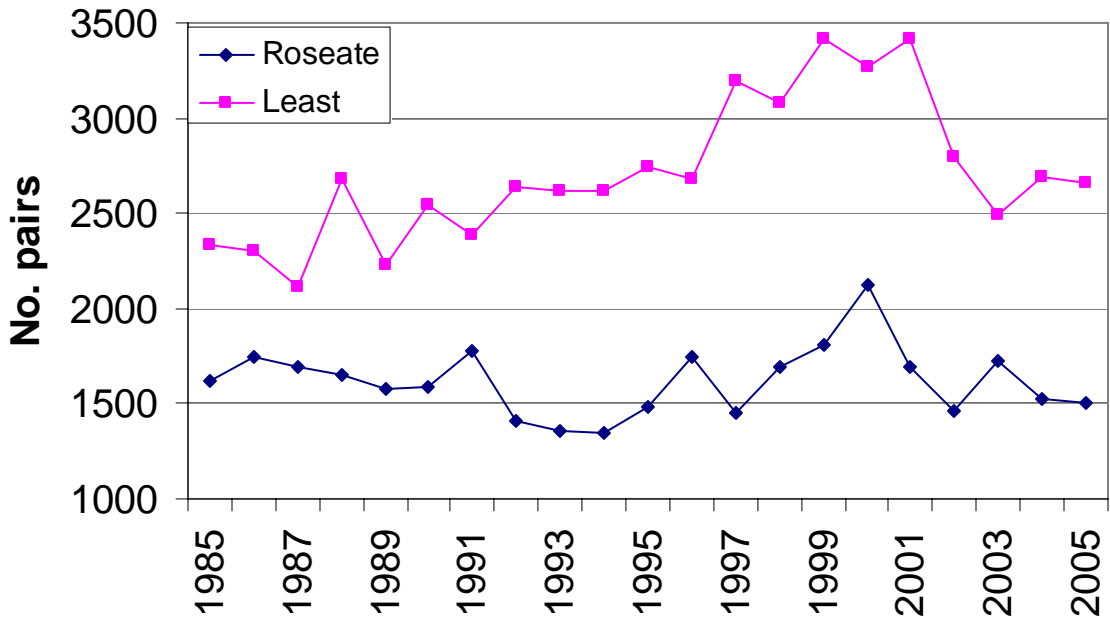
<sup>d</sup> Pair(s) were attached to the site but no nests were found. Pair(s) not included in state total.

<sup>e</sup> The Black Skimmer was probably a re-nest of a pair from Minimoy. It is not included in the state total.

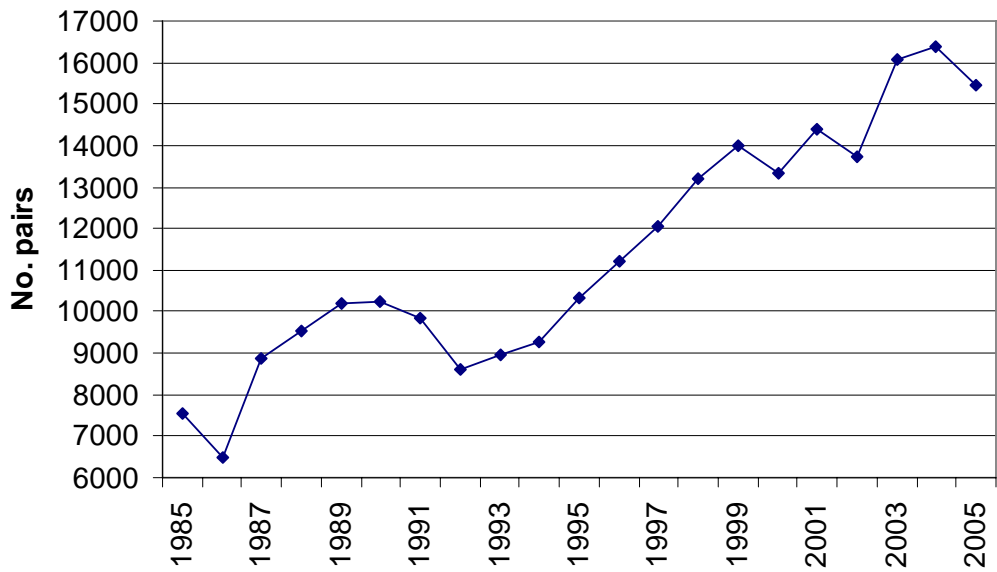
<sup>f</sup> Incomplete information. Fox Pt. and Quick's Hole not surveyed.

<sup>g</sup> Only one pair of Arctic Terns nested. As has been the case for the past few years, an additional male was present throughout the season. This year it sometimes was accompanied by a (presumed) female in sub-adult or winter plumage. Only one pair is included in state total.

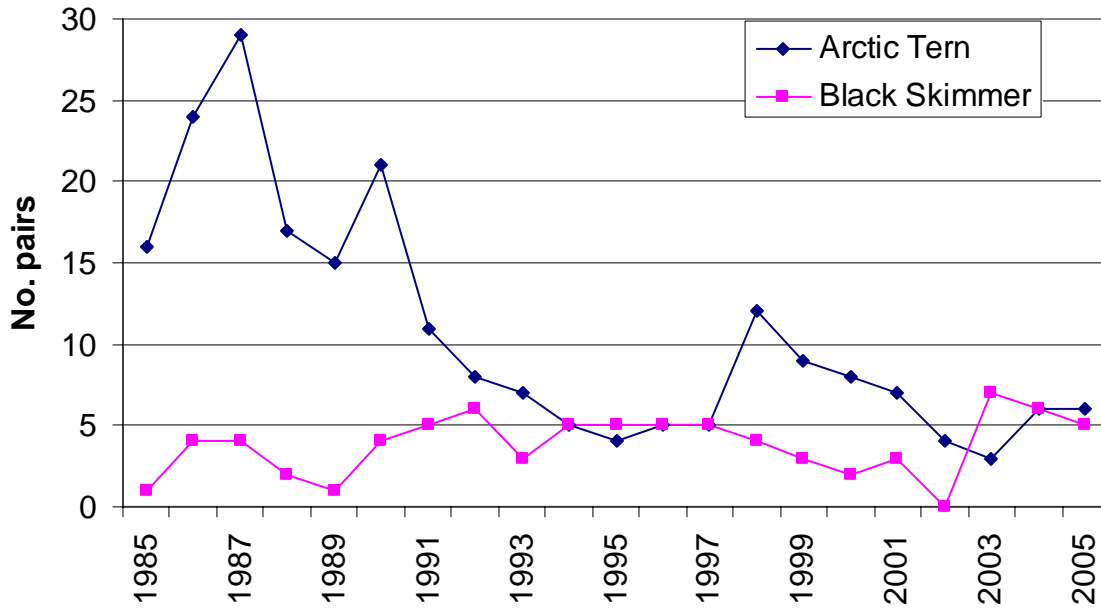
<sup>h</sup> The number of pairs was estimated based on the number of chicks seen.



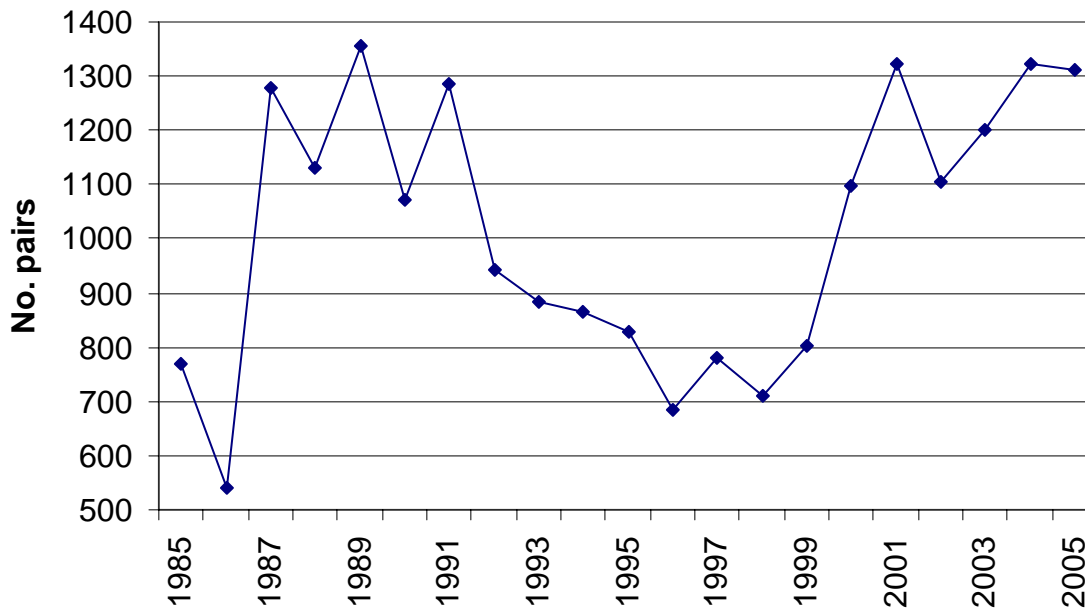
**Figure 1. Numbers of nesting Roseate and Least Terns in Massachusetts, 1985-2005.**



**Figure 2. Numbers of nesting Common Terns in Massachusetts, 1985-2005.**



**Figure 3. Numbers of nesting Arctic Terns and Black Skimmers in Massachusetts, 1985-2005.**



**Figure 4. Numbers of nesting Laughing Gulls in Massachusetts, 1985-2005.**