

Massachusetts Division of Marine Fisheries - Designated Shellfish Growing Area



Produced: Sep. 10, 2009



Shellfish Area Classification			
	Approved		Conditionally Restricted
	Conditionally Approved		Prohibited
			Restricted
			Management Close

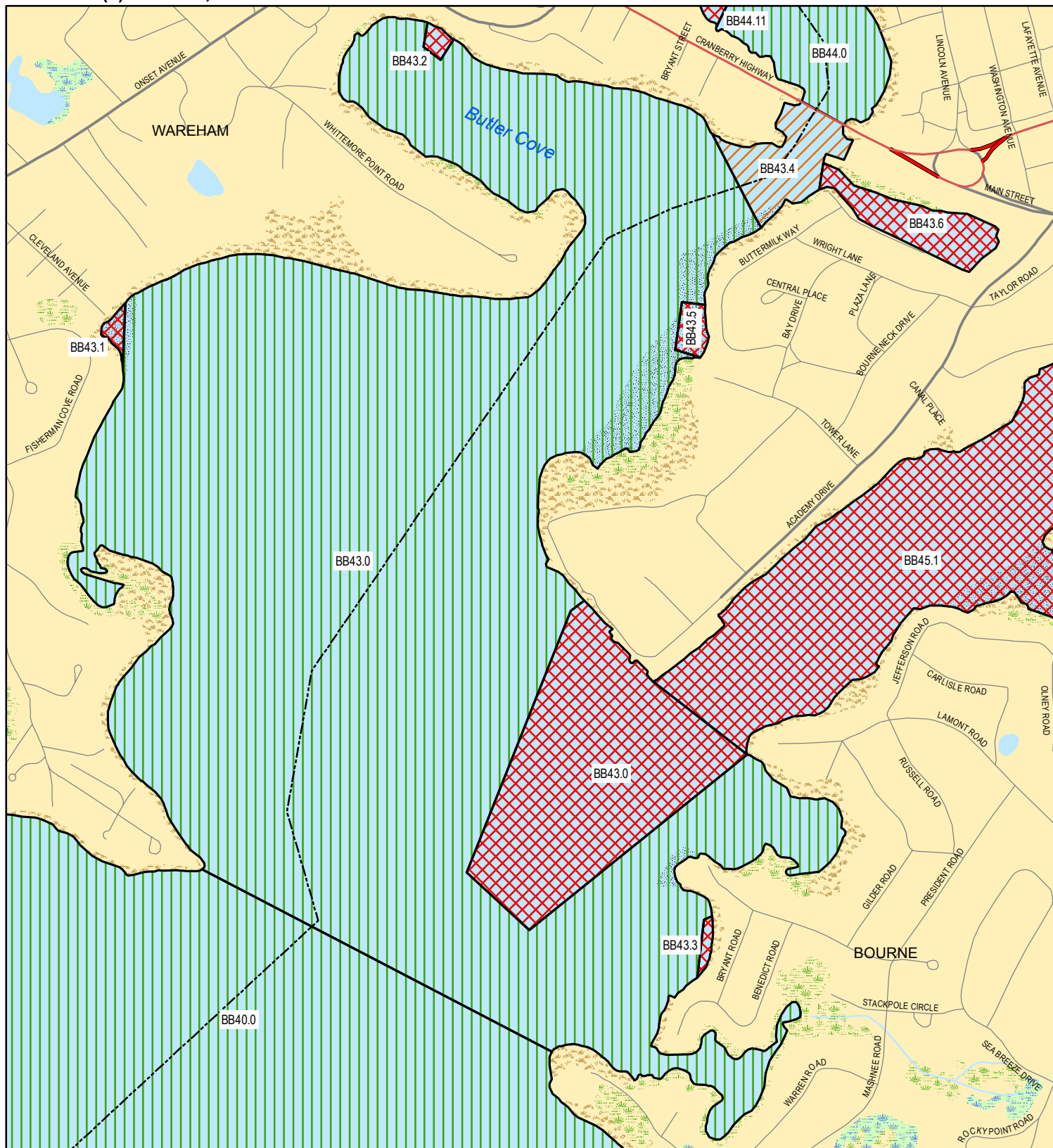
Map Features Legend			
	MUNICIPAL BOUNDARY		Cranberry Bog
	Marsh/Bog		Reservoir
	Wooded marsh		Tidal Flats
	Open Water		Beach/Dune
	Salt Marsh		

Growing Area Code: **BB43**

Area Name: **FISHERMAN COVE**

Area Town(s): **Bourne, Wareham**

0.1 Miles



This product is for planning and educational purposes only. It is not to be used by itself for legal boundary definition or regulatory interpretation.