

# Massachusetts Division of Marine Fisheries - Designated Shellfish Growing Area



Produced: Sep. 10, 2009

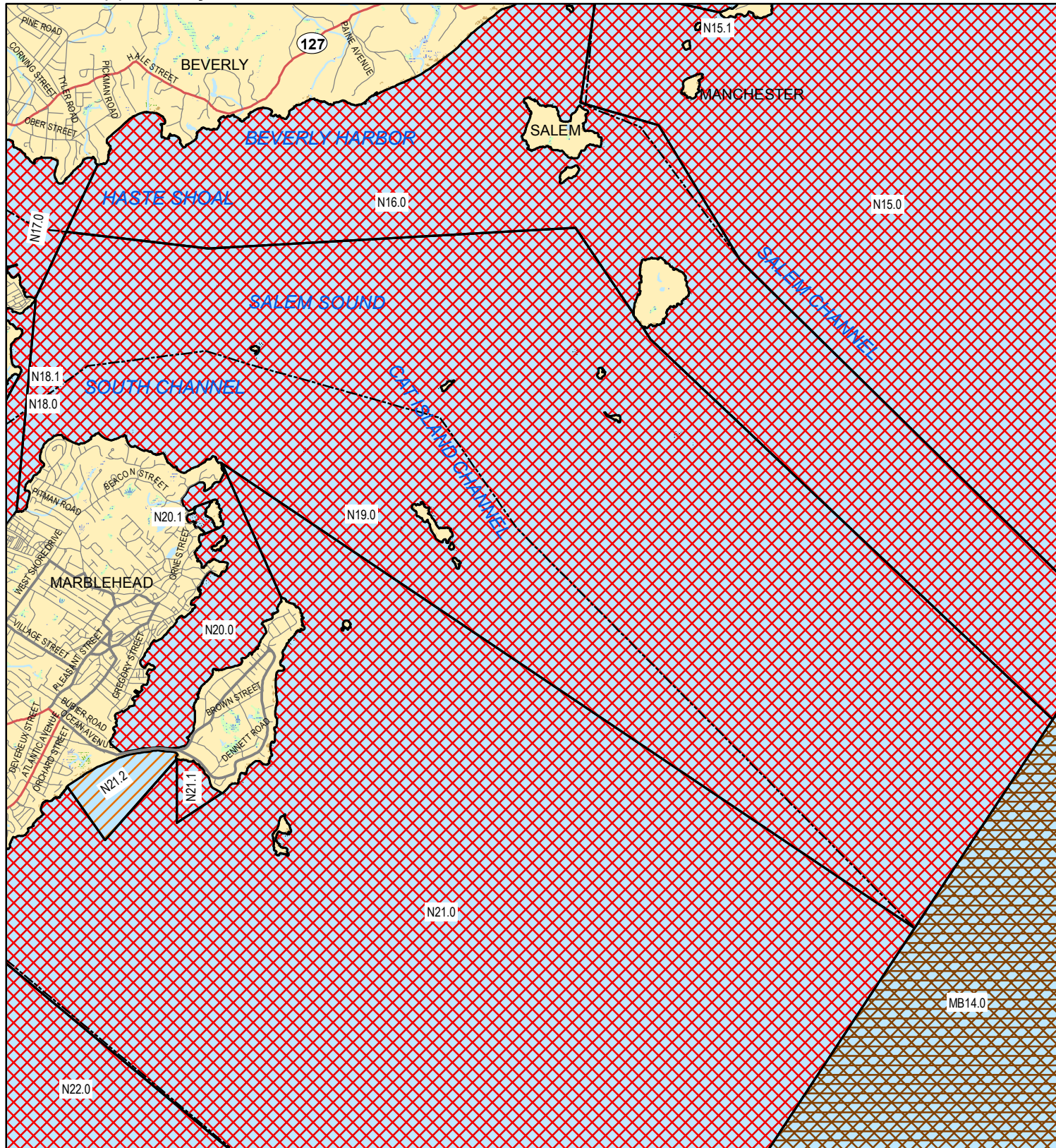


Shellfish Area Classification					
	Approved		Conditionally Restricted		Restricted
	Conditionally Approved		Prohibited		Management Close

Map Features Legend					
	MUNICIPAL BOUNDARY		Cranberry Bog		Reservoir
	Marsh/Bog		Salt Marsh		Tidal Flats
	Wooded marsh		Open Water		Beach/Dune

**Growing Area Code: N19**  
**Area Name: FOLGER/PEACHES POINT**  
**Area Town(s): Beverly, Marblehead, Salem**

0.25  
Miles



This product is for planning and educational purposes only. It is not to be used by itself for legal boundary definition or regulatory interpretation.