

Massachusetts Division of Marine Fisheries - Designated Shellfish Growing Area



Produced: July 28, 2009

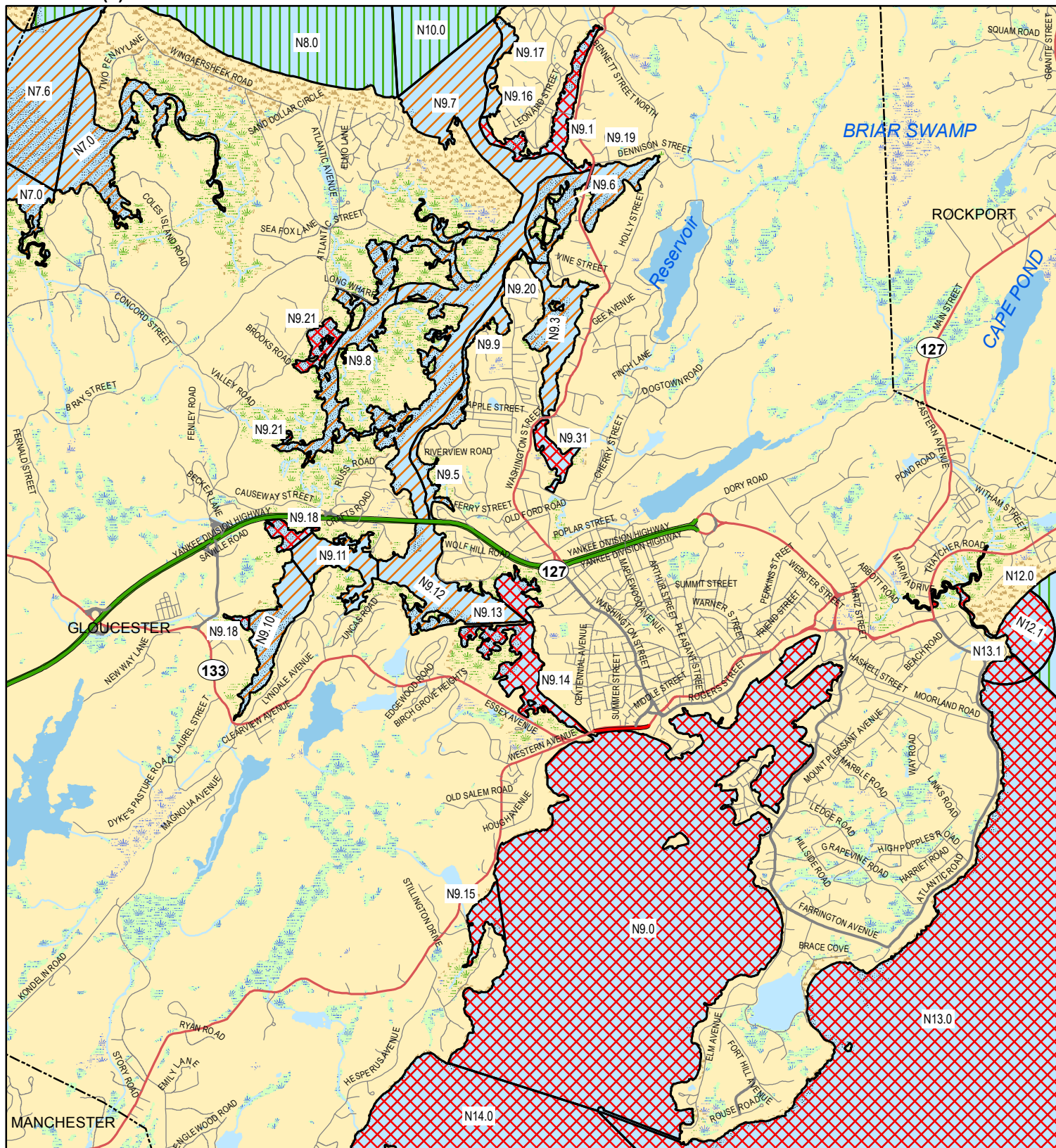
0.25 Miles



Shellfish Area Classification			
	Approved		Conditionally Restricted
	Conditionally Approved		Prohibited
			Restricted
			Management Close

Map Features Legend			
	MUNICIPAL BOUNDARY		Cranberry Bog
	Marsh/Bog		Salt Marsh
	Wooded marsh		Open Water
	Reservoir (with PWSID)		Tidal Flats
	Beach/Dune		

Growing Area Code: N9
Area Name: ANNISQUAM RIV. GLOUCESTER HBR
Area Town(s): Gloucester



This product is for planning and educational purposes only. It is not to be used by itself for legal boundary definition or regulatory interpretation.