

Massachusetts Division of Marine Fisheries - Designated Shellfish Growing Area



Shellfish Area Classification			
	Approved		Conditionally Restricted
	Conditionally Approved		Prohibited
			Restricted
			Management Close

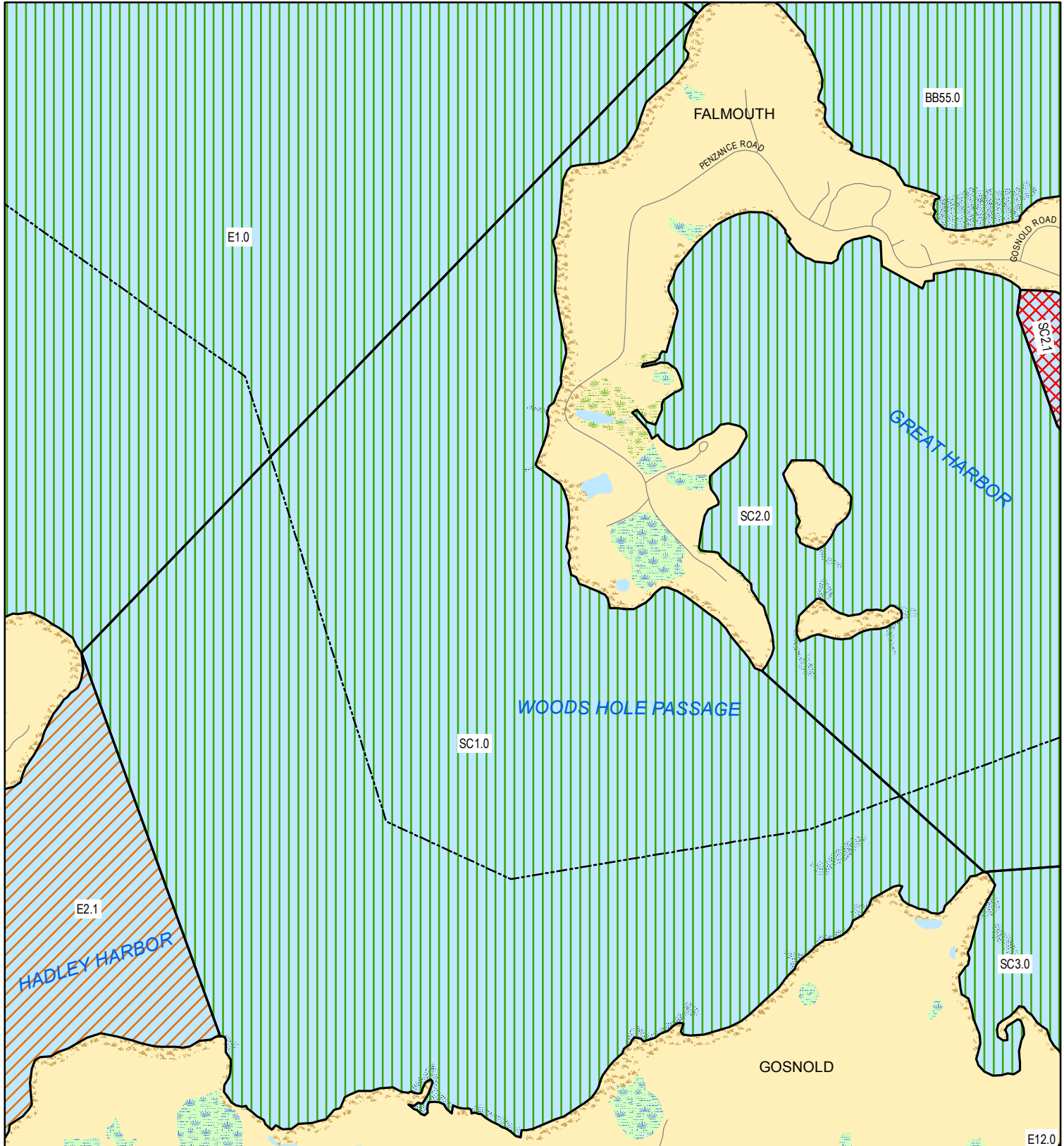


Produced: Sep. 10, 2009

Growing Area Code: SC1
 Area Name: WOODS HOLE WEST COASTAL
 Area Town(s): Falmouth, Gosnold

Map Features Legend			
	MUNICIPAL BOUNDARY		Cranberry Bog
	Marsh/Bog		Reservoir
	Wooded marsh		Salt Marsh
	Open Water		Tidal Flats
	Beach/Dune		

0.06
 Miles



This product is for planning and educational purposes only. It is not to be used by itself for legal boundary definition or regulatory interpretation.