



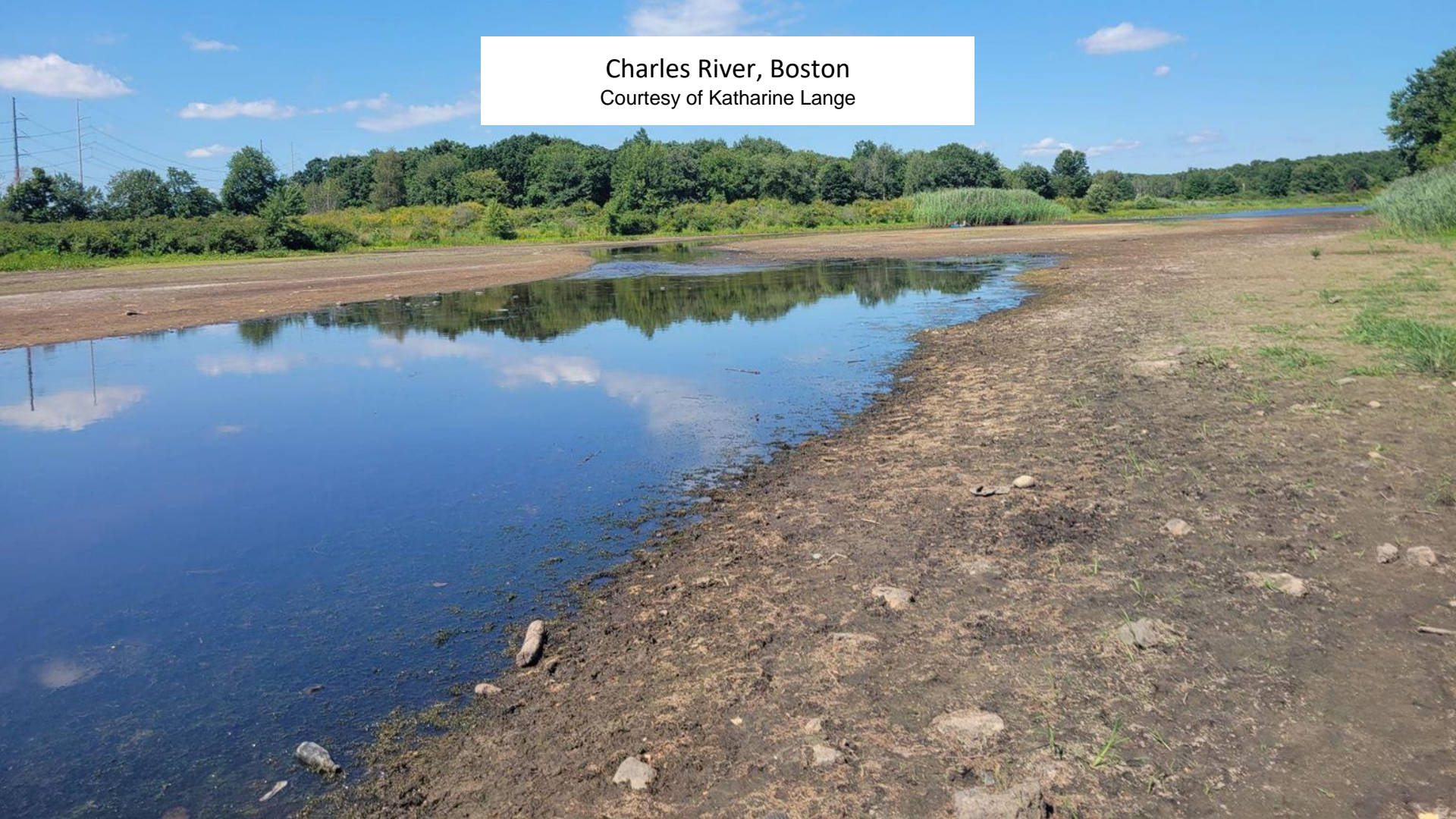
MASSACHUSETTS  
Rivers Alliance

# Drought Management Task Force Updates

August 8, 2022



Charles River, Boston  
Courtesy of Katharine Lange





## Charles River

Courtesy of Ralph Abele



Weston  
wetland plants typically submerged high and dry



Lasell Boathouse in Newton  
Floating dock is perched on land.





Charles River, Newton  
Courtesy of Joan Friedman



Motley Pond,  
Charles River,  
Dedham  
Courtesy of Ana Hutker





Motley Pond,  
Charles River,  
Dedham  
Courtesy of Ana Hutker

*Orange buoy is on dry land.*







Fuller Brook,  
Wellesley

Courtesy of Turnaround-  
Films.com



Charles River, aerial view,  
Millennium Park, Boston

courtesy of Turnaround-  
Films.com





Ware River, Gibbs Crossing, Ware  
courtesy of Keith Davies

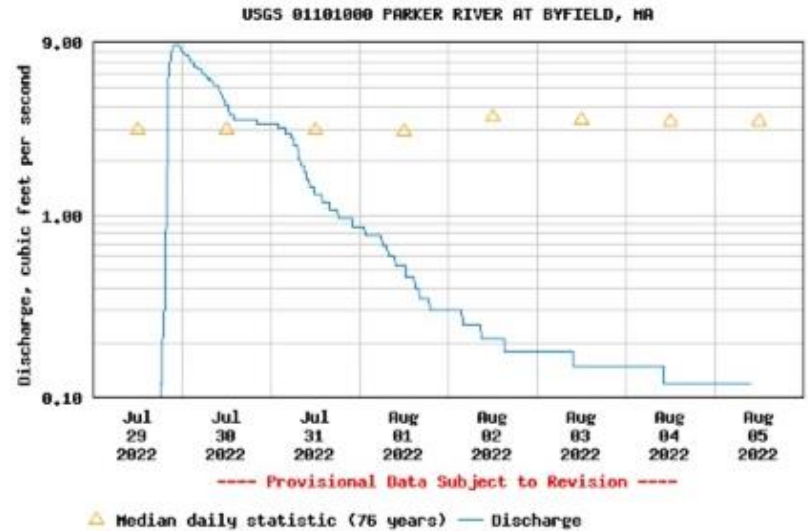






## Parker River, Georgetown

Courtesy of George Comiskey







Lawrence,  
Merrimack River  
Courtesy of John Macone

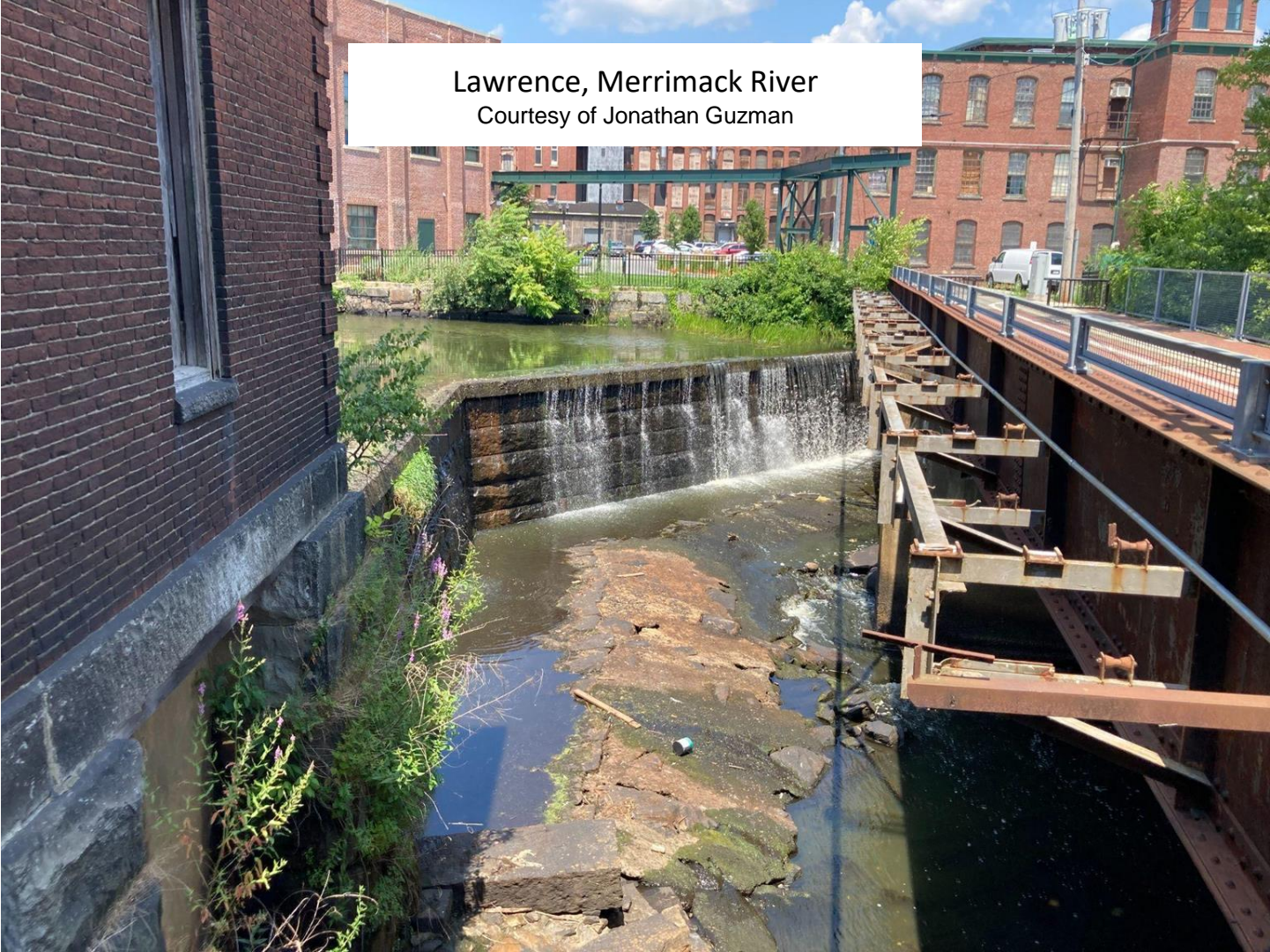
*“Substantial sections of the riverbed are starting to emerge, an unusual sight.*

*The flow rate of the Merrimack, as measured in Lowell, is currently at ~23% of the average for this time of year.*

*(The average flow for this date, based on 100 years of measurements, is 3,320 CFS. It is currently 758 CFS.)”*



Lawrence, Merrimack River  
Courtesy of Jonathan Guzman



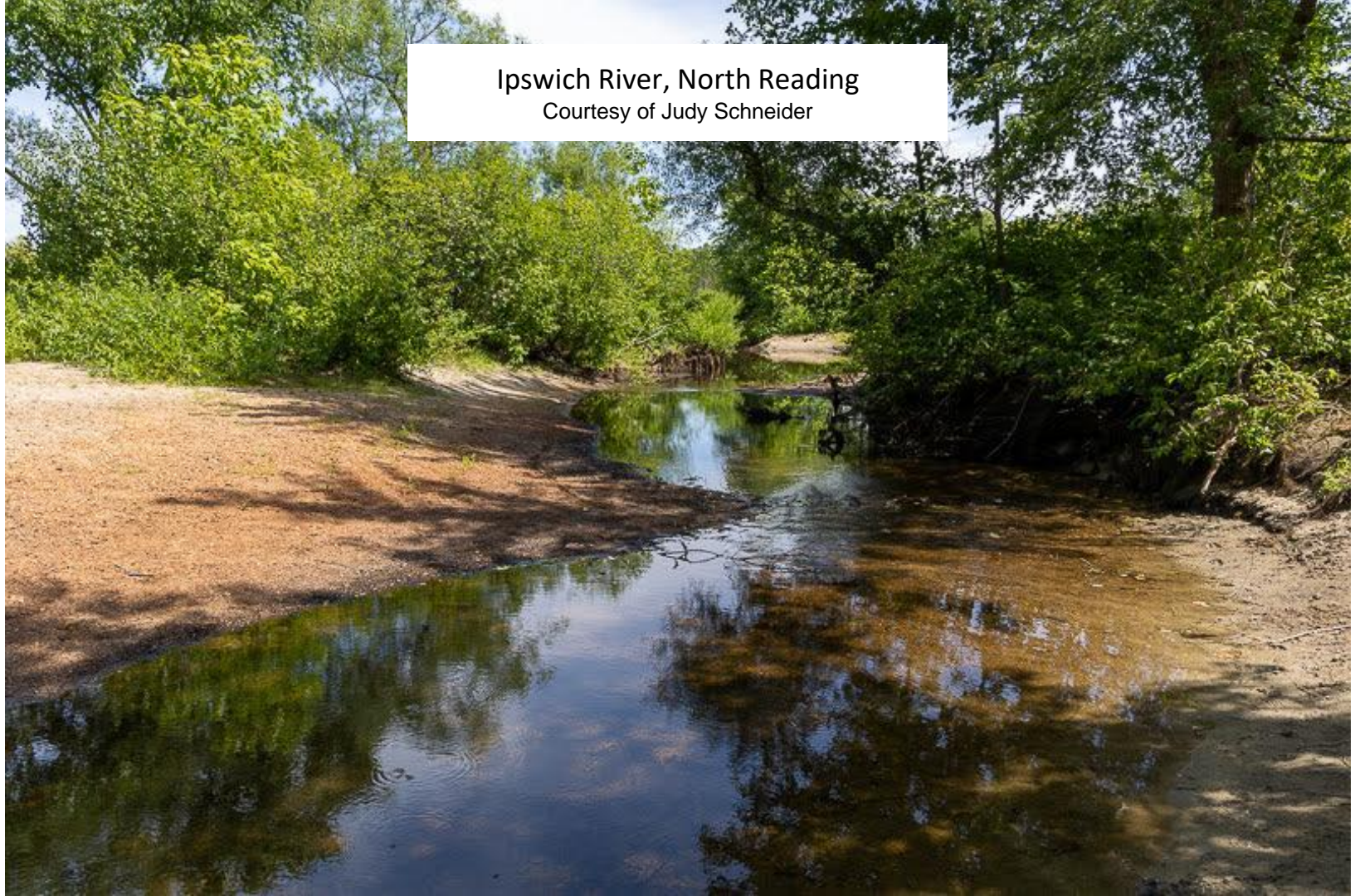


Martins Brook, North Reading  
Courtesy of Nishan Bilazarian





Ipswich River, North Reading  
Courtesy of Judy Schneider



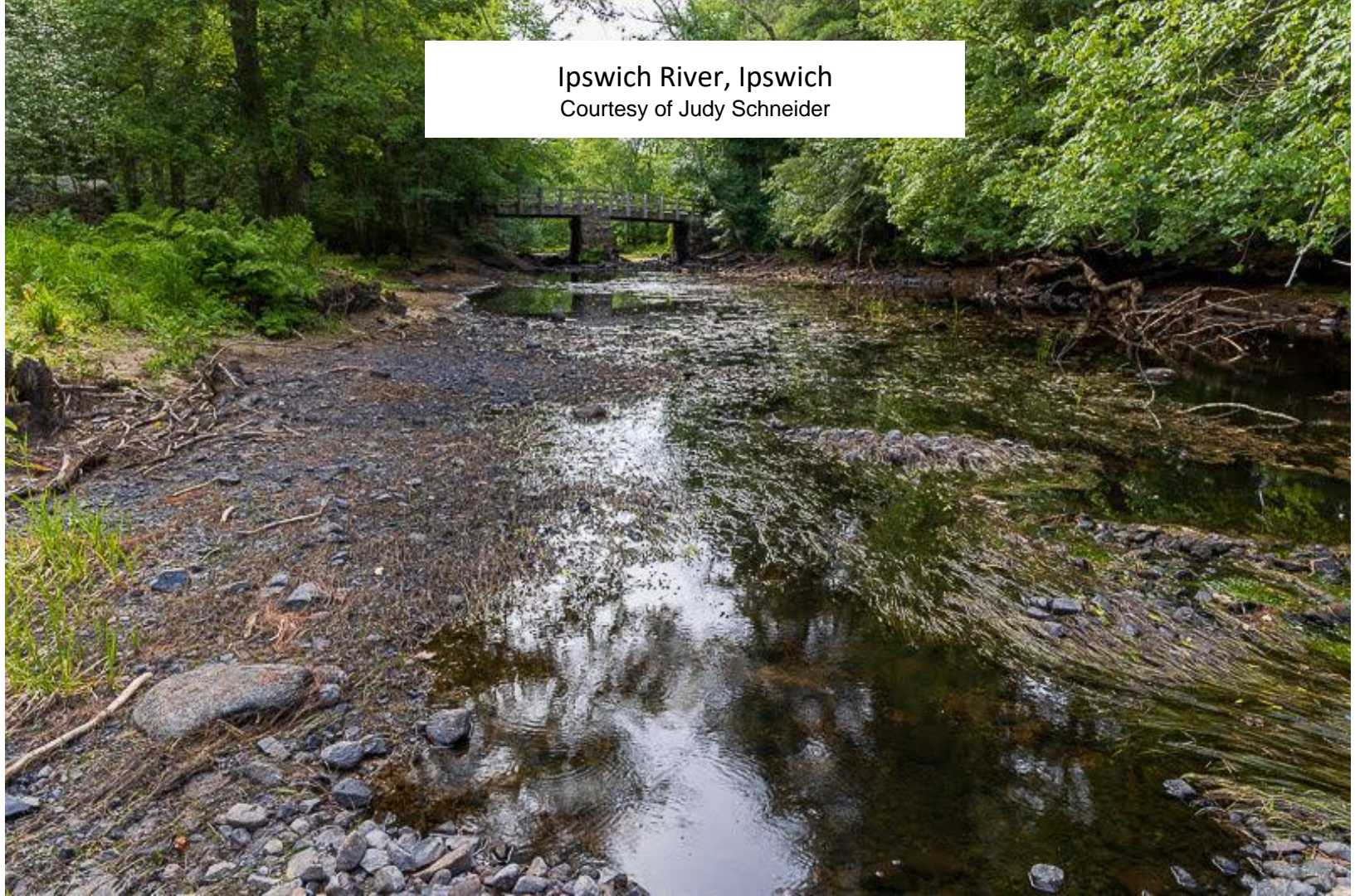


Ipswich River, Hamilton  
Courtesy of Donna Bambury





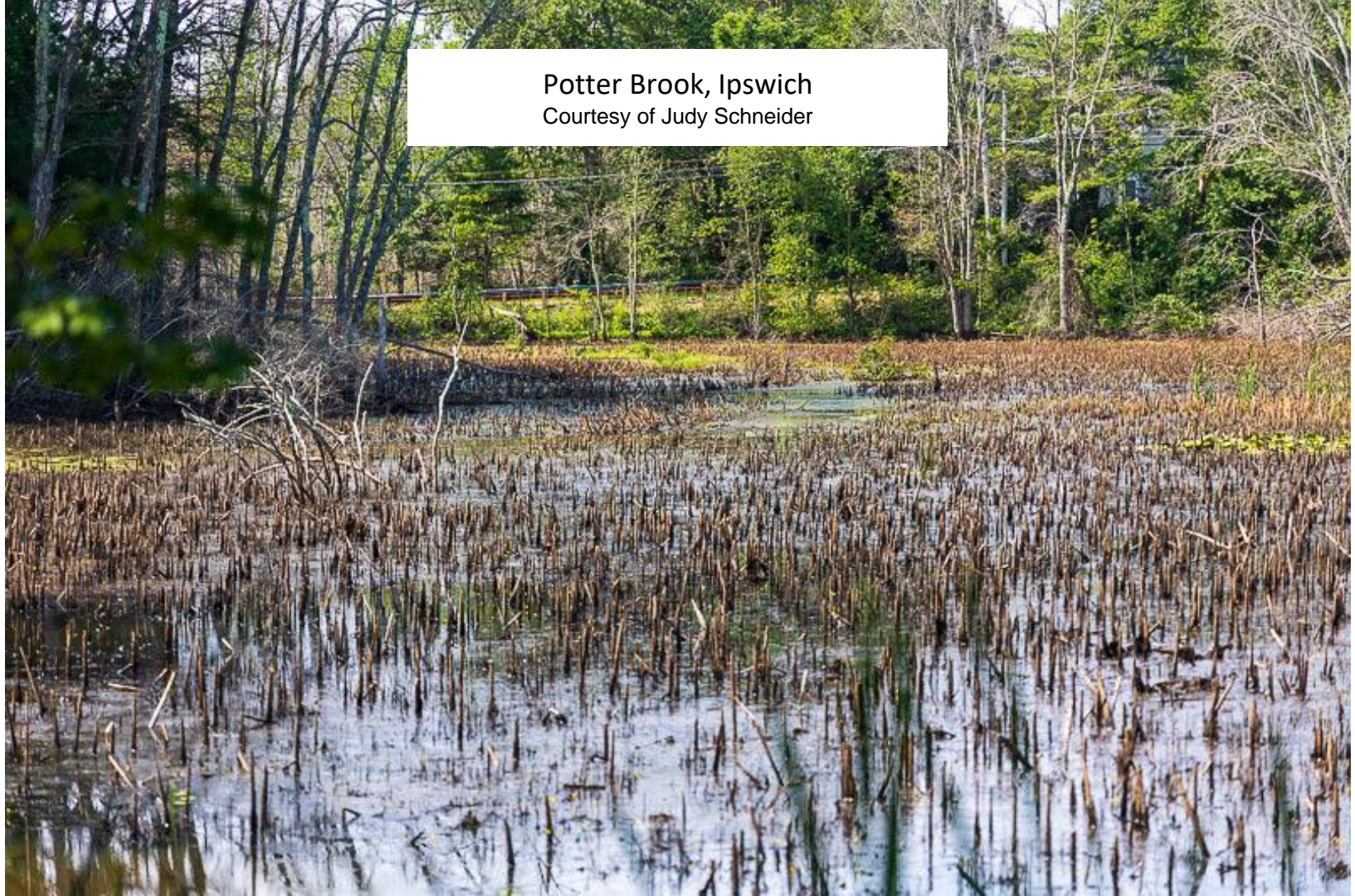
Ipswich River, Ipswich  
Courtesy of Judy Schneider





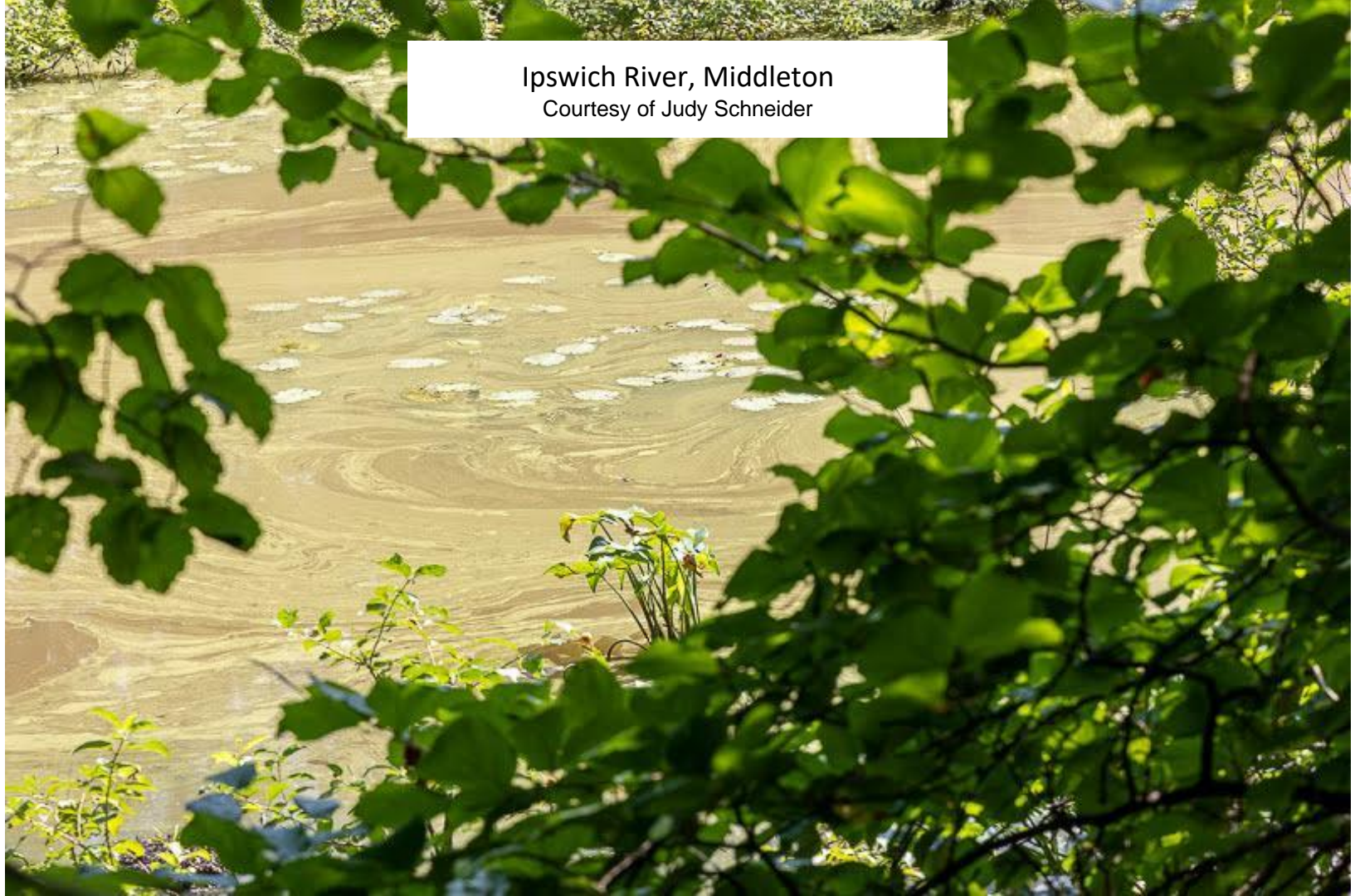
# Potter Brook, Ipswich

Courtesy of Judy Schneider



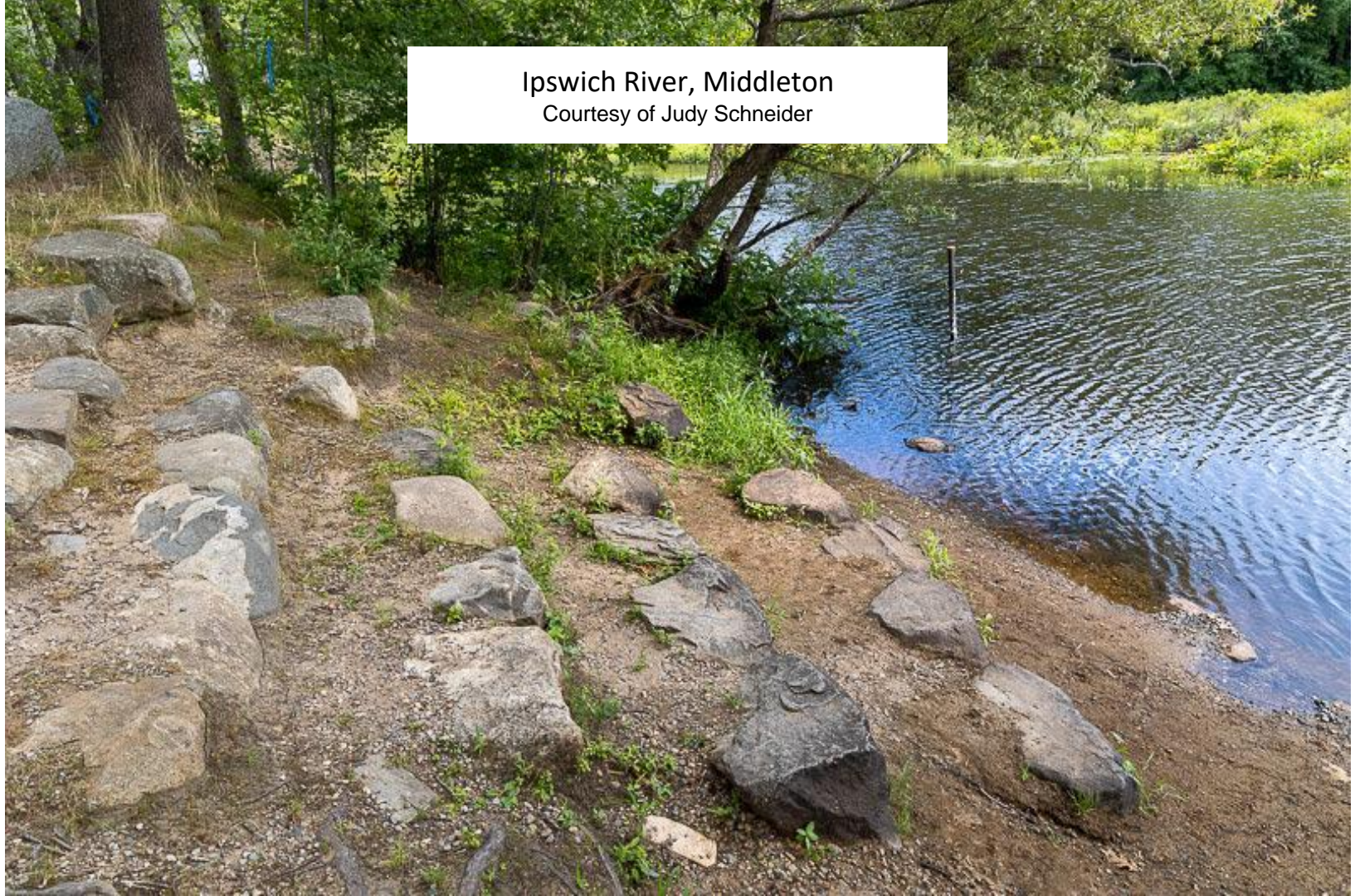


Ipswich River, Middleton  
Courtesy of Judy Schneider





Ipswich River, Middleton  
Courtesy of Judy Schneider







Ipswich River, Middleton

Courtesy of Turnaround-  
Films.com



Third Herring Brook,  
Norwell

Courtesy of Turnaround-  
Films.com