

Nonpoint Source Management Section – PRIORITY SEGMENTS

2024 NPS Priority Waters

The following Massachusetts waterbodies are proposed as nonpoint source impaired waters that are most likely to respond to remediation efforts that will result in meeting water quality standards (Table 1: Priority Stream/River Waterbodies, Table 2: Priority Lakes, Ponds, and Estuaries).

Waterbodies listed here are defined by segment or waterbody number. Water quality impairments are found in the [Final Massachusetts 2016 Integrated list of Waters](#).

This list has been developed using the following approach:

1. The Massachusetts Recovery Potential Screening Tool (RPST, version dated 2/14/2020) was used to identify Sustainable Water Management Initiative (“SWMI”) subwatersheds that are most highly recoverable. The area weighted average of a SWMI watershed Recovery Potential Index (RPI) or the simple average was calculated for waterbodies with a MassDEP segment ID. Watersheds showing medium-high and high recoverability potential (Recovery Potential Index greater than 55.95) were selected. See Table E.3 for the RPST tool setup parameters.
2. For each waterbody, it was determined if the cause of impairment was due to nonpoint source related cause (See Table E.4 for impairment likely due to nonpoint source causes). The list of nonpoint source impairments was then narrowed down to those related to nutrients, eutrophication, and pathogens, and these were further weighted as priority for restoration (See Table E.5 for list of priority nonpoint source causes of impairment). Only waterbodies with impairments due to these classes were considered a priority.
3. Coastal SWMI watersheds, watersheds with watershed impervious cover greater than 10%, with a cause of impairment of “source unknown” or with watershed cropland and pasture land use less than 10%, were all deemed nonpriority waterbodies. Additionally, waterbodies with a source of impairment listed as combined sewer overflows and waterbodies suspected to be impaired largely due to wastewater treatment plant impacts were also excluded from consideration.
4. Finally, waterbodies in the National Water Quality Initiative Watersheds, including HUC12 watersheds in the Nashua River Watershed called “Nashua mainstem-Squannacook River to mouth (010700040402)” and in the Westport River Watershed called “Noquochoke Lake (010900020501)” and “Westport River-Noquochoke Lake to mouth (010900020502)”. All stream segments and estuary segments were identified as priority waterbodies regardless of the cause of their impairment as these watersheds are a high priority for MassDEP and its partners.
5. Estimated trophic status for lakes and ponds were used from the Northeast Lake and Pond Classification (Sheldon and Anderson 2016). Lakes classified with a trophic status with oligotrophic-mesotrophic that are impaired will have a higher recovery potential than those classified as eutrophic. Lakes with harmful algal blooms will also be considered higher priority due to the public health aspect of this impairment.
6. The targeted stream/river waterbodies are shown below, with the water quality impairments that can most effectively be addressed through nonpoint source best management practices (“BMPs”) (Table E.1). The targeted lake waterbodies with estimated trophic status and water quality

Nonpoint Source Management Section – PRIORITY SEGMENTS

impairments that can most effectively be addressed through nonpoint source BMPs are shown below (Table E.2). Targeted estuary waterbodies can also be found in Table E.2.

This is a partial list for planning purposes only. Applicants wishing to work in other watersheds are encouraged to follow similar methodology in order to identify competitive, high priority projects. To access the Massachusetts Recovery Potential Screening Tool, [click here](#).

After grant award, grant recipients may also contact the MassDEP Nonpoint Source Section Chief, Padmini Das, at padmini.das@mass.gov for further assistance and access to resources.

Nonpoint Source Management Section – PRIORITY SEGMENTS

Table 1: Priority Stream/River Waterbodies

Watershed	Segment ID	Waterbody Name	Description	Size	Class ¹	All Impairment Causes (suspected nonpoint source impairment causes in italics)	All Suspected Sources of Impairment	Average Recovery Potential Index Score
Blackstone	MA51-15	Tatnuck Brook	From outlet Holden Reservoir #2, Holden to inlet Coes Reservoir, Worcester (through Cook Pond formerly segment MA51027 and Patch Reservoir formerly segment MA51118).	3.3 miles	B	Benthic Macroinvertebrates Bioassessments, Flow Regime Modification, Non-Native Aquatic Plants, Sedimentation/Siltation, <i>Escherichia Coli (E. Coli)</i>	Unspecified Urban Stormwater, Source Unknown, Introduction of Non-native Organisms (Accidental or Intentional)	60.5
Buzzards Bay	MA95-06	Sippican River	Headwaters, outlet Leonards Pond, Rochester to County Road, Marion/Wareham.	3 miles	B (WWF, HQW)	<i>Chlorophyll-a</i> , Dissolved Oxygen, Enterococcus	Dam or Impoundment, Source Unknown	62.8
Buzzards Bay	MA95-36	Mattapoissett River	Headwaters, outlet Snipatuit Pond, Rochester to Mattapoissett River Dam (#MA02447) at Fairhaven Road (Route 6), Mattapoissett.	10.4 miles	B	Enterococcus, <i>Escherichia Coli (E. Coli)</i>	Source Unknown	63.0
Buzzards Bay	MA95-44	Snell Creek	Headwaters west of Main Street, Westport to Drift Road, Westport.	1.3 miles	B	Mercury in Fish Tissue, PCBs In Fish Tissue		NWQI Waterbody
Buzzards Bay	MA95-12	Shingle Island River	Outlet of small unnamed pond northeast of Flag Swamp Road, Dartmouth to inlet Noquochoke Lake (north basin), Dartmouth.	1.5 miles	B	Enterococcus, <i>Escherichia Coli (E. Coli)</i> , Fecal Coliform		NWQI Waterbody
Buzzards Bay	MA95-58	Bread And Cheese Brook	Headwaters north of Old Bedford Road, Westport to confluence with East Branch Westport River, Westport.	5 miles	B	Enterococcus	Source Unknown	NWQI Waterbody
Buzzards Bay	MA95-57	Unnamed Tributary	Outlet Cornell Pond, Dartmouth to confluence with Shingle Island River, Dartmouth.	4.9 miles	B	Enterococcus, Fecal Coliform		NWQI Waterbody
Buzzards Bay	MA95-84	Unnamed Tributary	Unnamed tributary to Snell Creek, perennial portion north of Brookwood Drive, Westport to mouth at Snell Creek, Westport.	1 mile	B	Not applicable	Not applicable	NWQI Waterbody
Buzzards Bay	MA95-73	Dunhams Brook	Headwaters east of the intersection of Cornell and Main roads, Westport to the confluence with the West Branch Westport River at Hicks Cove, Westport.	0.8 miles	B	Not applicable	Not applicable	NWQI Waterbody

Nonpoint Source Management Section – PRIORITY SEGMENTS

Watershed	Segment ID	Waterbody Name	Description	Size	Class ¹	All Impairment Causes (suspected nonpoint source impairment causes in italics)	All Suspected Sources of Impairment	Average Recovery Potential Index Score
Buzzards Bay	MA95-75	Unnamed Tributary	Unnamed tributary to Bread and Cheese Brook, headwaters north of Briggs Road, Westport to confluence with Bread and Cheese Brook, Westport.	1.4 miles	B	Not applicable	Not applicable	NWQI Waterbody
Buzzards Bay	MA95-40	East Branch Westport River	Headwaters, outlet Noquochoke Lake, Dartmouth to Old County Road bridge, Westport.	1.9 miles	B			NWQI Waterbody
Chicopee	MA36-05	Ware River	Wheelwright Pond Dam (NATID: MA00616), New Braintree/Hardwick to Ware Impoundment dam (NATID: MA00594), Ware.	11.5 miles	B (WWF, CSO)	<i>Escherichia Coli (E. Coli)</i>	Source Unknown	63.8
Chicopee	MA36-06	Ware River	Ware Impoundment dam (NATID: MA00594), Ware to Thorndike Dam (NATID: MA00563), Palmer.	10.1 miles	B (WWF, CSO)	<i>Escherichia Coli (E. Coli)</i> , Fecal Coliform	Source Unknown	63.7
Chicopee	MA36-11	Sevenmile River	Headwaters, outlet Browning Pond, Spencer to confluence with Cranberry River, Spencer.	7.3 miles	B (WWF, HQW)	<i>Escherichia Coli (E. Coli)</i>	Source Unknown	61.8
Chicopee	MA36-16	Quaboag River	Warren WWTP discharge (NPDES: MA0101567), Warren to Route 32 bridge, Palmer/Monson.	8.7 miles	B (WWF, CSO)	<i>Escherichia Coli (E. Coli)</i> , Fecal Coliform	Source Unknown	62.4
Chicopee	MA36-17	Quaboag River	Route 32 bridge, Palmer/Monson to mouth at confluence with Ware River (forming headwaters of Chicopee River), Palmer.	5.3 miles	B (WWF, CSO)	<i>Escherichia Coli (E. Coli)</i>	Discharges from Municipal Separate Storm Sewer Systems (MS4), Source Unknown	62.3
Chicopee	MA36-50	Danforth Brook	Headwaters, east of Charity Road, Hardwick to mouth at confluence with Ware River, Hardwick.	5.8 miles	B	<i>Escherichia Coli (E. Coli)</i>	Source Unknown	61.1
Connecticut	MA34-06	Lampson Brook	Belchertown WWTP discharge, Belchertown to mouth at confluence with Weston Brook, Belchertown.	1.2 miles	B (WWF)	Dissolved Oxygen, <i>Phosphorus</i> , <i>Total</i>	Municipal Point Source Discharges, Wet Weather Discharges (Non-Point Source)	60.5
Connecticut	MA34-11	Manhan River	Outlet Tighe Carmody Reservoir, Southampton to mouth at confluence with Connecticut River, Easthampton.	18.9 miles	B	<i>Escherichia Coli (E. Coli)</i>	Source Unknown	64.0

Nonpoint Source Management Section – PRIORITY SEGMENTS

Watershed	Segment ID	Waterbody Name	Description	Size	Class ¹⁻	All Impairment Causes (suspected nonpoint source impairment causes in italics)	All Suspected Sources of Impairment	Average Recovery Potential Index Score
Connecticut	MA34-23	Weston Brook	Headwaters, south of State Street (Route 202), Belchertown to mouth at inlet Forge Pond, Granby (WWF applies from the confluence of Lampson Brook in Belchertown to the mouth).	2.7 miles	B (WWF*)	<i>Phosphorus, Total</i>	Source Unknown	60.5
Connecticut	MA34-25	Mill River	Headwaters, outlet Factory Hollow Pond, Amherst to mouth at inlet Lake Warner, Hadley.	5.2 miles	B	<i>Escherichia Coli (E. Coli)</i>	Agriculture, Source Unknown, Unspecified Urban Stormwater	63.8
Connecticut	MA34-28	Mill River	Headwaters (confluence of East and West Branch Mill River, Williamsburg), to outlet Paradise Pond, Northampton.	10 miles	B	<i>Escherichia Coli (E. Coli)</i>	Source Unknown	66.6
Deerfield	MA33-03	Deerfield River	Confluence with North River, Charlemont/Shelburne to confluence with Green River, Greenfield.	16.8 miles	B (WWF)	<i>Escherichia Coli (E. Coli)</i>	Source Unknown	64.3
Deerfield	MA33-04	Deerfield River	Confluence with Green River, Greenfield to confluence with Connecticut River, Greenfield/Deerfield.	2 miles	B (WWF)	<i>Escherichia Coli (E. Coli)</i>	Source Unknown	64.7
Deerfield	MA33-101	South River	Emments Road, Ashfield to confluence with Johnny Bean Brook, Conway (formerly part of MA33-08).	6.1 miles	B (CWF)	<i>Escherichia Coli (E. Coli)</i> , Fecal Coliform	Source Unknown	66.5
Deerfield	MA33-102	South River	From confluence with Johnny Bean Brook, Conway to confluence with Deerfield River, Conway (formerly part of MA33-08), (through South River Impoundment formerly segment MA33022).	6.8 miles	B	Physical substrate habitat alterations, <i>Escherichia Coli (E. Coli)</i> , Fecal Coliform	Source Unknown	65.9
Deerfield	MA33-19	East Branch North River	Vermont line, Colrain to confluence with West Branch North River, Colrain.	7.5 miles	B (CWF, HQW)	<i>Escherichia Coli (E. Coli)</i>	Agriculture, Source Unknown	67.6

Nonpoint Source Management Section – PRIORITY SEGMENTS

Watershed	Segment ID	Waterbody Name	Description	Size	Class ¹	All Impairment Causes (suspected nonpoint source impairment causes in <i>italics</i>)	All Suspected Sources of Impairment	Average Recovery Potential Index Score
Deerfield	MA33-30	Green River	From Swimming Pool #2 Dam (National Dam ID MA02321) northwest of Nashs Mill Road, Greenfield to confluence with the Deerfield River, Greenfield (formerly segment MA33-10 and part of segment MA33-09) (HQP applies upstream of former Greenfield WWTF discharge (NPDES# MA0101214), from approximately 0.5 mile upstream of mouth).	3.7 miles	B (CWF, HQW)	Turbidity, Fecal Coliform, <i>Escherichia Coli (E. Coli)</i>	Source Unknown	61.0
Housatonic	MA21-17	Southwest Branch Housatonic River	Headwaters, outlet Richmond Pond, Pittsfield to mouth at confluence with West Branch Housatonic River (forming headwaters Housatonic River), Pittsfield.	5.8 miles	B (CWF, HQW)	Sedimentation/Siltation, <i>Escherichia Coli (E. Coli)</i> , Fecal Coliform	Source Unknown	60.8
Housatonic	MA21-19	Housatonic River	Outlet of Woods Pond dam (NATID: MA00731), Lee/Lenox to the Risingdale Impoundment dam (NATID: MA00250), Great Barrington (impoundment formerly segment MA21121).	19.9 miles	B (WWF)	<i>Algae</i> , PCBs In Fish Tissue, <i>Phosphorus, Total</i> , Polychlorinated Biphenyls (PCBs), Zebra mussel, Dreissena polymorph	Industrial Point Source Discharge, Municipal Point Source Discharges, Non-Point Source, Source Unknown, Upstream Source, Illegal Dumps or Other Inappropriate Waste Disposal, Introduction of Non-native Organisms (Accidental or Intentional)	62.2
Hudson: Hoosic	MA11-02	North Branch Hoosic River	From USGS Gage (# 01332000), North Adams to mouth at confluence with Hoosic River, North Adams.	1.5 miles	B (CWF, HQW)	Alteration in stream-side or littoral vegetative covers, Flow Regime Modification, Polychlorinated Biphenyls (PCBs), <i>Escherichia Coli (E. Coli)</i> , Fecal Coliform	Channelization, Streambank Modifications/destabilization, Source Unknown, Commercial Districts (Shopping/Office Complexes), Illicit Connections/Hook-ups to Storm Sewers, Municipal (Urbanized High Density Area), Urban Runoff/Storm Sewers	68.1

Nonpoint Source Management Section – PRIORITY SEGMENTS

Watershed	Segment ID	Waterbody Name	Description	Size	Class ¹	All Impairment Causes (suspected nonpoint source impairment causes in italics)	All Suspected Sources of Impairment	Average Recovery Potential Index Score
Hudson: Hoosic	MA11-03	Hoosic River	Headwaters, outlet Cheshire Reservoir, Cheshire to Adams WWTP discharge (NPDES: MA0100315), Adams.	8.8 miles	B (CWF, HQW)	Alteration in stream-side or littoral vegetative covers, Ambient Bioassays - Chronic Aquatic Toxicity, Flow Regime Modification, Other anthropogenic substrate alterations, Temperature, <i>Escherichia Coli (E. Coli)</i> , Fecal Coliform	Channelization, Streambank Modifications/destabilization, Source Unknown, Dam or Impoundment, Discharges from Municipal Separate Storm Sewer Systems (MS4), Illicit Connections/Hook-ups to Storm Sewers, Waterfowl	62.3
Hudson: Hoosic	MA11-05	Hoosic River	Confluence with North Branch Hoosic River, North Adams to the Vermont State line, Williamstown.	8.2 miles	B (WWF)	PCBs In Fish Tissue, Alteration in stream-side or littoral vegetative covers, Flow Regime Modification, <i>Nutrient/Eutrophication Biological Indicators, Escherichia Coli (E. Coli)</i> , Fecal Coliform	Brownfield (Non-npl) Sites, Channelization, Streambank Modifications/destabilization, Agriculture, Municipal Point Source Discharges, Source Unknown, Urban Runoff/Storm Sewers	63.6
Merrimack	MA84A-39	East Meadow River	Headwaters, outlet Neal Pond, Haverhill to inlet Millvale Reservoir, Haverhill.	3 miles	A (PWS, ORW)	<i>Escherichia Coli (E. Coli)</i>	Source Unknown	63.3
Millers	MA35-16	Keyup Brook	Headwaters Great Swamp Northfield State Forest, Northfield, to confluence with Millers River, Erving.	5 miles	B	PCBs In Fish Tissue, <i>Escherichia Coli (E. Coli)</i>	Contaminated Sediments, Releases from Waste Sites or Dumps, Source Unknown	68.7
Narragansett Bay (Shore)	MA53-15	Oak Swamp Brook	Headwaters in Oak Swamp east of School Street, Rehoboth to confluence with Rocky Run, Rehoboth.	3 miles	B	<i>Escherichia Coli (E. Coli)</i>		63.5
Narragansett Bay (Shore)	MA53-16	Rocky Run	Headwaters in wetland east of Simmons Street, Rehoboth to approximately 0.1 mile east of Mason Street, Rehoboth.	8.6 miles	B	<i>Escherichia Coli (E. Coli)</i> , Fecal Coliform		63.5
Nashua	MA81-29	Malagasco Brook	Headwaters southwest of Apron Hill, Boylston through Pine Swamp to mouth at inlet Wachusett Reservoir (South Bay), Boylston.	2.4 miles	A (PWS, ORW)	Benthic Macroinvertebrates Bioassessments, <i>Nutrient/Eutrophication Biological Indicators</i>	Agriculture	68.6

Nonpoint Source Management Section – PRIORITY SEGMENTS

Watershed	Segment ID	Waterbody Name	Description	Size	Class ¹	All Impairment Causes (suspected nonpoint source impairment causes in italics)	All Suspected Sources of Impairment	Average Recovery Potential Index Score
Quinebaug	MA41-02	Quinebaug River	Sturbridge WWTP outfall (NPDES: MA0100421), Sturbridge to confluence with Cady Brook, Southbridge.	6.5 miles	B (CWF)	<i>Algae</i> , Debris, Trash, Turbidity	Discharges from Municipal Separate Storm Sewer Systems (MS4), Municipal Point Source Discharges, Illegal Dumps or Other Inappropriate Waste Disposal, Unspecified Urban Stormwater	65.1
Nashua	MA81-06	Nashua River	From confluence of Squannacook River, Shirley/Groton/Ayer to Pepperell Dam (NATID: MA00373), Pepperell (through Pepperell Pond formerly segment MA81167).	9.1 miles	B (WWF)	Benthic Macroinvertebrates Bioassessments	Introduction of Non-native Organisms (Accidental or Intentional), Municipal Point Source Discharges, Source Unknown	NWQI Waterbody
Nashua	MA81-07	Nashua River	From Pepperell Dam (NATID: MA00373), Pepperell to New Hampshire state line, Pepperell/Dunstable.	3.7 miles	B (WWF)	<i>Phosphorus, Total</i>	Municipal Point Source Discharges	NWQI Waterbody
Nashua	MA81-20	James Brook	Headwaters, Groton to mouth at mouth at confluence with Nashua River, Ayer/Groton.	3.9 miles	B	<i>Escherichia Coli (E. Coli)</i>	Source Unknown	NWQI Waterbody
Nashua	MA81-64	Reedy Meadow Brook	Headwaters, Reedy Meadow, Groton to mouth at confluence with Nashua River, Pepperell.	2.3 miles	B (CWF)	Not applicable	Not applicable	NWQI Waterbody
Nashua	MA81-81	Unkety Brook	Headwaters, east of Chicopee Row, Groton to mouth at confluence with Nashua River, Dunstable.	6.7 miles	B	Not applicable	Not applicable	NWQI Waterbody
Quinebaug	MA41-03	Quinebaug River	Southbridge WWTP outfall (NPDES: MA0100901), Southbridge to dam (NAT ID: MA00114) just upstream of West Dudley Road, Dudley.	2.2 miles	B (WWF)	Dissolved Oxygen, <i>Nutrients</i> , Physical substrate habitat alterations, <i>Escherichia Coli (E. Coli)</i> , Fecal Coliform	Dam or Impoundment, Municipal Point Source Discharges, Unspecified Urban Stormwater, Municipal (Urbanized High Density Area)	62.9

Nonpoint Source Management Section – PRIORITY SEGMENTS

Watershed	Segment ID	Waterbody Name	Description	Size	Class ¹	All Impairment Causes (suspected nonpoint source impairment causes in italics)	All Suspected Sources of Impairment	Average Recovery Potential Index Score
Quinebaug	MA41-06	Cady Brook	Charlton WWTP outfall (NPDES: MA0101141), Charlton to mouth at confluence with the Quinebaug River, Southbridge.	5.1 miles	B (WWF)	Dewatering, <i>Nutrient/Eutrophication Biological Indicators, Escherichia Coli (E. Coli)</i>	Impacts from Hydrostructure Flow Regulation/modification, Municipal Point Source Discharges, Discharges from Municipal Separate Storm Sewer Systems (MS4), Source Unknown	61.0
Quinebaug	MA41-12	Cohasse Brook	From the outlet of Cohasse Brook Reservoir, Southbridge through Wells Pond (formerly pond segment MA41053) to mouth at confluence with the Quinebaug River, Southbridge.	2.7 miles	B	Benthic Macroinvertebrates Bioassessments, Sedimentation/Siltation, <i>Escherichia Coli (E. Coli)</i>	Loss of Riparian Habitat, Unspecified Urban Stormwater	60.5
Quinebaug	MA41-13	Mckinstry Brook	Headwaters, east of Brookfield Road, Charlton (excluding intermittent portion) to mouth at confluence with the Quinebaug River, Southbridge.	7.3 miles	B	Debris, Trash, <i>Escherichia Coli (E. Coli)</i>	Illegal Dumps or Other Inappropriate Waste Disposal, Source Unknown	60.7
Quinebaug	MA41-16	Unnamed Tributary	Unnamed tributary to Mill Brook, headwaters, outlet Sherman Pond, Brimfield to mouth at confluence with Mill Brook, Brimfield.	1.2 miles	B	Benthic Macroinvertebrates Bioassessments, Dissolved Oxygen, Sedimentation/Siltation, <i>Escherichia Coli (E. Coli)</i>	Source Unknown, Non-Point Source	64.1
Westfield	MA32-22	Potash Brook	Source, outlet Dunlap Pond, Blandford to mouth at confluence with Westfield River, Village of Woronoco, Russell.	5.2 miles	B (CWF)	<i>Escherichia Coli (E. Coli)</i>	Wet Weather Discharges (Non-Point Source)	69.0
Westfield	MA32-36	Little River	From Springfield Water Works Intake Dam (NATID: MA00708) northwest of Gorge Road, Russell to Horton's Bridge, Westfield (formerly part of segment MA32-26).	5.8 miles	B (CWF)	Combined Biota/Habitat Bioassessments, <i>Escherichia Coli (E. Coli)</i>	Source Unknown, Discharges from Municipal Separate Storm Sewer Systems (MS4), Wet Weather Discharges (Non-Point Source)	68.3
Westfield	MA32-41	Moose Meadow Brook	Outlet Westfield Reservoir to mouth at confluence with Westfield River, Westfield (formerly part of segment MA32-23).	4.8 miles	B	<i>Escherichia Coli (E. Coli)</i> , Fecal Coliform	Agriculture, Grazing in Riparian or Shoreline Zones	65.9

1. Cold Water Fishery ("CWF"), High Quality Water ("HQW"), Warm Water Fishery ("WWF"), Public Water Supply ("PWS"), Outstanding Resource Water ("ORW")

Nonpoint Source Management Section – PRIORITY SEGMENTS

Table 2: Priority Lakes, Ponds and Estuaries

Watershed	Segment ID	Waterbody Name	Description	Size	Class ²⁻	TNC Classification ¹	Estimated Trophic Status Confidence ¹	All Impairment Causes (nonpoint source priority in <i>italics</i>)	All Suspected Sources of Impairment	RPI_Score
Blackstone	MA51163	Sutton Falls	Sutton	11 Acres	B	Warm to Cool, Oligo-Mesotrophic, Acidic	Very Low	<i>Harmful Algal Blooms, Turbidity</i>	Source Unknown	62.08926
Buzzards Bay	MA95178	Halfway Pond	Plymouth (On 9 October 1997, PALIS ID was changed from 94057 to 95178; therefor, this pond historically reported in South Coastal "94").	215 Acres	B	Warm to Cool, Eutrophic, Acidic	Known	<i>Harmful Algal Blooms</i>	Agriculture, Source Unknown	70.430569
Buzzards Bay	MA95115	Parker Mills Pond	Wareham	73 Acres	B	Warm to Cool, Eutrophic, Acidic	High	Non-Native Aquatic Plants, <i>Phosphorus, Total</i>	Introduction of Non-native Organisms (Accidental or Intentional), Source Unknown	67.0754
Buzzards Bay	MA95080	Leonards Pond	Rochester	49 Acres	B	Warm to Cool, Eutrophic, Acidic	Known	Aquatic Plants (Macrophytes), <i>Chlorophyll-a</i> , Transparency / Clarity, Non-Native Aquatic Plants	Agriculture, Source Unknown, Introduction of Non-native Organisms (Accidental or Intentional)	60.530555
Cape Cod	MA96268	Ryder Pond	Truro	18 Acres	B (ORW)	Cold, Eutrophic, Acidic	Known	Mercury in Fish Tissue, Dissolved Oxygen, <i>Phosphorus, Total</i>	Atmospheric Deposition - Toxics, Source Unknown	68.05
Buzzards Bay	MA95-37	West Branch Westport River	West of Quail Trail, Westport to mouth at Westport Harbor/Westport River, Westport.	1.29 square miles	SA (SFO, HQW)	Not applicable	Not applicable	Estuarine Bioassessments, <i>Nitrogen, Total, Nutrient/Eutrophication Biological Indicators, Fecal Coliform</i>	Agriculture, Impervious Surface/Parking Lot Runoff, On-site Treatment Systems (Septic Systems and Similar Decentralized Systems), Source Unknown	NWQI Waterbody

Nonpoint Source Management Section – PRIORITY SEGMENTS

Watershed	Segment ID	Waterbody Name	Description	Size	Class ²	TNC Classification ¹	Estimated Trophic Status Confidence ¹	All Impairment Causes (nonpoint source priority in italics)	All Suspected Sources of Impairment	RPI_Score
Buzzards Bay	MA95-54	Westport River	From the confluences of the East Branch Westport River and the West Branch Westport River to Rhode Island Sound (at a line from the southwestern tip of Horseneck Point to the easternmost point near Westport Light), Westport (includes Westport Harbor and Hulda Cove).	0.74 square miles	SA (SFO)	Not applicable	Not applicable	Fecal Coliform		NWQI Waterbody
Buzzards Bay	MA95-59	Snell Creek	'Marcus' Bridge', Westport to confluence with East Branch Westport River, Westport.	0.01 square miles	SA (SFO)	Not applicable	Not applicable	Fecal Coliform		NWQI Waterbody
Buzzards Bay	MA95-41	East Branch Westport River	Old County Road bridge, Westport to the mouth at Westport Harbor/Westport River, Westport (excluding Horseneck Channel).	2.65 square miles	SB (SFR, HQW)	Not applicable	Not applicable	Estuarine Bioassessments, <i>Nitrogen, Total, Nutrient/Eutrophication Biological Indicators</i> , Fecal Coliform	Agriculture, Impervious Surface/Parking Lot Runoff, On-site Treatment Systems (Septic Systems and Similar Decentralized Systems), Animal Feeding Operations (NPS), Dairies, Discharges from Municipal Separate Storm Sewer Systems (MS4), Grazing in Riparian or Shoreline Zones	NWQI Waterbody
Buzzards Bay	MA95-88	The Let	From north of East Beach Road, Westport to the confluence with Horseneck Channel, Westport.	0.22 square miles	SA (SFO)	Not applicable	Not applicable	Not applicable	Not applicable	NWQI Waterbody

Nonpoint Source Management Section – PRIORITY SEGMENTS

Watershed	Segment ID	Waterbody Name	Description	Size	Class ²	TNC Classification ¹	Estimated Trophic Status Confidence ¹	All Impairment Causes (nonpoint source priority in italics)	All Suspected Sources of Impairment	RPI_Score
Buzzards Bay	MA95-87	Horseneck Channel	From the outlet of The Let to the confluence with the East Branch Westport River (east of Route 88), Westport.	0.24 square miles	SA (SFO)	Not applicable	Not applicable	Not applicable	Not applicable	NWQI Waterbody
Cape Cod	MA96039	Cliff Pond	Brewster	190 Acres	B	Warm to Cool, Oligo-Mesotrophic, Acidic	High	<i>Harmful Algal Blooms</i>	Source Unknown	66.417
Chicopee	MA36025	Browning Pond	Oakham/Spencer	106 Acres	B	Warm to Cool, Oligo-Mesotrophic, Acidic	High	Mercury in Fish Tissue, Non-Native Aquatic Plants, <i>Nutrient/Eutrophication Biological Indicators</i>	Atmospheric Deposition - Toxics, Introduction of Non-native Organisms (Accidental or Intentional), Source Unknown	65.18227
Chicopee	MA36050	Dean Pond	Oakham	64 Acres	B	Warm to Cool, Eutrophic, Acidic	High	<i>Algae</i> , Turbidity	Source Unknown	68.903258
Chicopee	MA36150	Sugden Reservoir	Spencer	85 Acres	B	Warm to Cool, Eutrophic, Acidic	Medium	<i>Nutrient/Eutrophication Biological Indicators</i>		63.542066
Connecticut	MA34103	Lake Wyola	Shutesbury	124 Acres	B	Warm to Cool, Oligo-Mesotrophic, Acidic	High	<i>Nutrient/Eutrophication Biological Indicators, Phosphorus, Total</i>		70.828098
Connecticut	MA34042	Leverett Pond	Leverett	91 Acres	B	Warm to Cool, Oligo-Mesotrophic, Acidic	High	Eurasian Water Milfoil, <i>Myriophyllum spicatum</i> , Non-Native Aquatic Plants, <i>Nutrient/Eutrophication Biological Indicators</i>		70.371496
Connecticut	MA34024	Forge Pond	Granby	72 Acres	B (WWF)	Warm to Cool, Eutrophic, Circumneutral	High	<i>Nutrient/Eutrophication Biological Indicators</i> , Non-Native Aquatic Plants	Source Unknown, Introduction of Non-native Organisms (Accidental or Intentional)	62.922719

Nonpoint Source Management Section – PRIORITY SEGMENTS

Watershed	Segment ID	Waterbody Name	Description	Size	Class ²	TNC Classification ¹	Estimated Trophic Status Confidence ¹	All Impairment Causes (nonpoint source priority in <i>italics</i>)	All Suspected Sources of Impairment	RPI_Score
Connecticut	MA34005	Arcadia Lake	Belchertown	32 Acres	B	Warm to Cool, Eutrophic, Acidic	Medium	Non-Native Aquatic Plants, <i>Nutrient/Eutrophication Biological Indicators</i>	Introduction of Non-native Organisms (Accidental or Intentional), On-site Treatment Systems (Septic Systems and Similar Decentralized Systems), Source Unknown	63.104639
French	MA42030	Jones Pond	Charlton/Spencer	30 Acres	B	Warm to Cool, Oligo-Mesotrophic, Acidic	High	Aquatic Plants (Macrophytes), <i>Nutrient/Eutrophication Biological Indicators</i>		65.627657
French	MA42018	Gore Pond	Dudley/Charlton	169 Acres	B	Warm to Cool, Eutrophic, Acidic	Known	<i>Algae</i> , Non-Native Aquatic Plants, Turbidity, Dissolved Oxygen		62.724832
French	MA42015	Dutton Pond	Leicester	6 Acres	B	Warm to Cool, Oligo-Mesotrophic, Acidic	Medium	<i>Nutrient/Eutrophication Biological Indicators, Phosphorus, Total</i>		61.242092
French	MA42029	Hudson Pond	Oxford/Sutton	15 Acres	B	Warm to Cool, Eutrophic, Acidic	High	Aquatic Plants (Macrophytes), <i>Nutrient/Eutrophication Biological Indicators</i>		60.950462
Housatonic	MA21040	Lake Garfield	Monterey	255 Acres	B	Warm to Cool, Eutrophic, Circumneutral	Known	Mercury in Fish Tissue, Dissolved Oxygen, Eurasian Water Milfoil, <i>Myriophyllum spicatum</i> , Non-Native Aquatic Plants, <i>Phosphorus, Total</i>	Atmospheric Deposition - Toxics, Source Unknown, Introduction of Non-native Organisms (Accidental or Intentional), Internal Nutrient Recycling	66.377084

Nonpoint Source Management Section – PRIORITY SEGMENTS

Watershed	Segment ID	Waterbody Name	Description	Size	Class ²	TNC Classification ¹	Estimated Trophic Status Confidence ¹	All Impairment Causes (nonpoint source priority in <i>italics</i>)	All Suspected Sources of Impairment	RPI_Score
Housatonic	MA21014	Lake Buel	Monterey/New Marlborough	191 Acres	B	Cold, Eutrophic, Alkaline	Known	Eurasian Water Milfoil, Myriophyllum spicatum, Non-Native Aquatic Plants, Dissolved Oxygen, Dissolved Oxygen Supersaturation, <i>Phosphorus, Total</i>	Introduction of Non-native Organisms (Accidental or Intentional), Internal Nutrient Recycling, Source Unknown	65.680063
Housatonic	MA21057	Laurel Lake	Lee/Lenox	174 Acres	B	Very Cold, Oligo-Mesotrophic, Alkaline	Known	Dissolved Oxygen, Dissolved Oxygen Supersaturation, Eurasian Water Milfoil, Myriophyllum spicatum, Non-Native Aquatic Plants, <i>Phosphorus, Total</i> , Zebra mussel, Dreissena polymorph	Source Unknown, Introduction of Non-native Organisms (Accidental or Intentional), Internal Nutrient Recycling	62.62757
Hudson: Hoosic	MA11002	Cheshire Reservoir, North Basin	[North Basin] Cheshire	284 Acres	B	Warm to Cool, Eutrophic, Alkaline	Known	Eurasian Water Milfoil, Myriophyllum spicatum, Non-Native Aquatic Plants, <i>Nutrient/Eutrophication Biological Indicators</i>	Introduction of Non-native Organisms (Accidental or Intentional), Agriculture, On-site Treatment Systems (Septic Systems and Similar Decentralized Systems), Source Unknown	66.5
Hudson: Hoosic	MA11019	Cheshire Reservoir, South Basin	[South Basin] Cheshire/Lanesborough	92 Acres	B	Warm to Cool, Eutrophic, Alkaline	High	<i>Algae</i> , Eurasian Water Milfoil, Myriophyllum spicatum, Non-Native Aquatic Plants	On-site Treatment Systems (Septic Systems and Similar Decentralized Systems), Source Unknown, Introduction of Non-native Organisms (Accidental or Intentional)	65.5

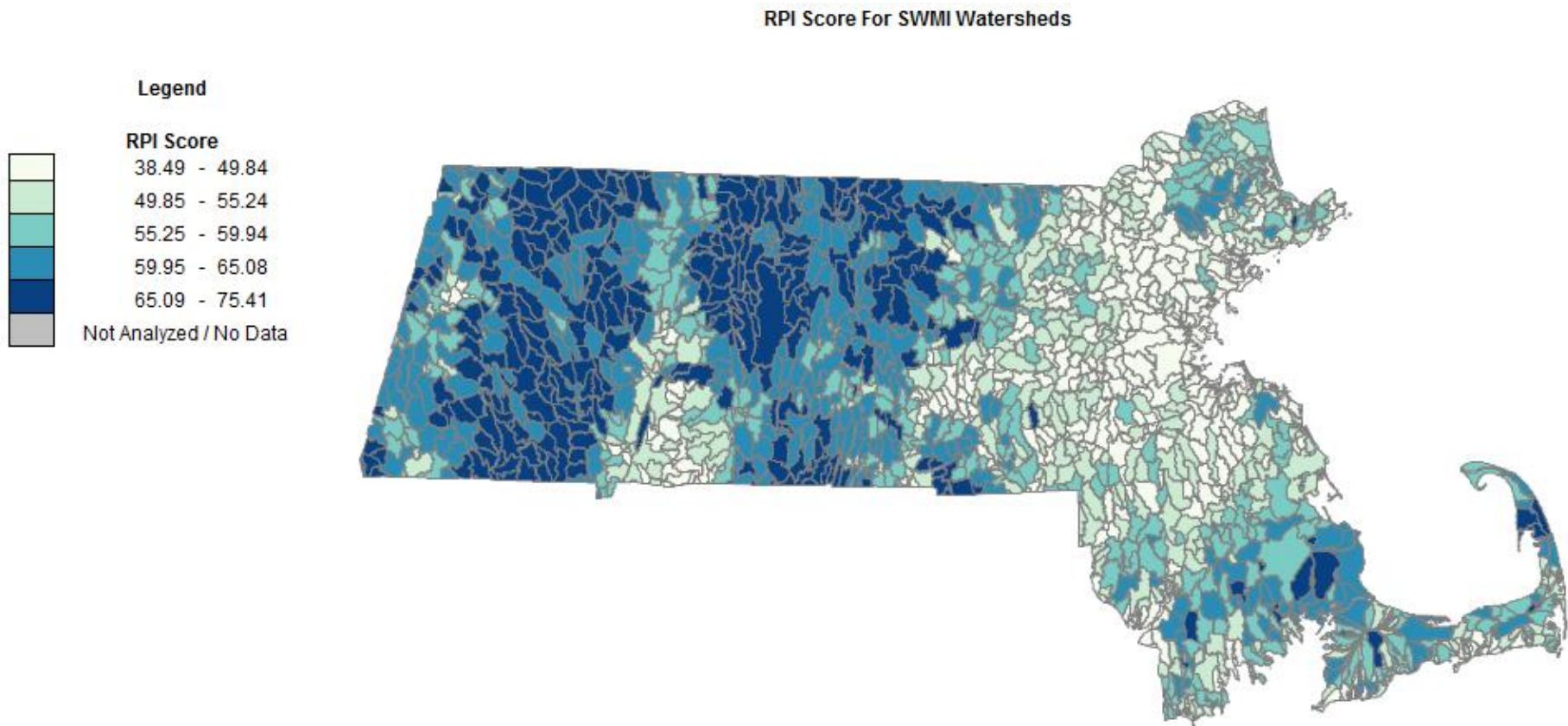
Nonpoint Source Management Section – PRIORITY SEGMENTS

Watershed	Segment ID	Waterbody Name	Description	Size	Class ²	TNC Classification ¹	Estimated Trophic Status Confidence ¹	All Impairment Causes (nonpoint source priority in italics)	All Suspected Sources of Impairment	RPI_Score
Millers	MA35063	Reservoir No. 1	Athol	8 Acres	A (PWS, ORW)	Cold, Eutrophic, Acidic	Medium	Aquatic Plants (Macrophytes), <i>Nutrient/Eutrophication Biological Indicators</i>		69.468054
Millers	MA35111	Tully Lake	Royalston/Athol	214 Acres	B	Warm to Cool, Oligo-Mesotrophic, Acidic	High	<i>Harmful Algal Blooms</i>	Source Unknown	64.528432
Millers	MA35099	Whites Mill Pond	Winchendon	42 Acres	B	Warm to Cool, Eutrophic, Acidic	High	Aquatic Plants (Macrophytes), <i>Nutrient/Eutrophication Biological Indicators</i>		66.916969
Millers	MA35056	Parker Pond	Gardner	32 Acres	B	Warm to Cool, Eutrophic, Circumneutral	High	Aquatic Plants (Macrophytes), <i>Nutrient/Eutrophication Biological Indicators</i> , Non-Native Aquatic Plants		65.745802
South Coastal	MA94132	Russell Millpond	Plymouth	42 Acres	B	Warm to Cool, Oligo-Mesotrophic, Acidic	Low	<i>Algae</i> , Fish Passage Barrier	Source Unknown, Hydrostructure Impacts on Fish Passage	64.500404
South Coastal	MA94136	Savery Pond	Plymouth	29 Acres	B	Warm to Cool, Eutrophic, Acidic	High	<i>Harmful Algal Blooms</i>	Agriculture, Source Unknown	61.794998
Taunton	MA62124	Muddy Cove Brook Pond	Dighton	23 Acres	B	Warm to Cool, Eutrophic, Circumneutral	High	<i>Algae</i> , Turbidity	Source Unknown	61.521213

1. Olivero-Sheldon, A. and M.G. Anderson. 2016. Northeast Lake and Pond Classification. The Nature Conservancy, Eastern Conservation Science, Eastern Regional Office. Boston, MA
2. Cold Water Fishery ("CWF"), High Quality Water ("HQW"), Warm Water Fishery ("WWF"), Public Water Supply ("PWS"), Outstanding Resource Water ("ORW"), Shellfishing Open ("SFO")

Nonpoint Source Management Section – PRIORITY SEGMENTS

Figure 1: Output from the Recovery Potential Screening Tool



Nonpoint Source Management Section – PRIORITY SEGMENTS

Table 3: Recovery Potential Screening Tool Indicator Setup

Indicator Type	Indicator Name	Weight
Ecological Indicator	Mean Index of Ecological Integrity (INSTATE)	1
Ecological Indicator	Infiltration BMP Suitability (Ksat um/s) (INSTATE)	1
Ecological Indicator	Watershed % Forest (INSTATE)	1
Ecological Indicator	Stream Corridor (30.5M) % Forest (INSTATE)	1
Ecological Indicator	Open Water Buffer (30.5M) % Forest (INSTATE)	1
Ecological Indicator	CNFI (INSTATE)	1
Stressor Indicator	% Lake/Estuary SQMI Impaired (INSTATE)	1
Stressor Indicator	% Stream Miles Impaired (INSTATE)	1
Stressor Indicator	Impaired Waterbody/Cause (MA) Comb (#) (INSTATE)	1
Stressor Indicator	N Yield (lb/sqmi) (INSTATE)	2
Stressor Indicator	P Yield (lb/sqmi) (INSTATE)	2
Stressor Indicator	Watershed % Impervious (INSTATE)	2
Stressor Indicator	Stream Corridor (30.5M) % Crop (INSTATE)	1
Stressor Indicator	Stream Corridor (30.5M) % Pasture (INSTATE)	1
Stressor Indicator	Watershed % Cropland (INSTATE)	1
Stressor Indicator	Watershed % Pasture (INSTATE)	1
Social Indicator	% Area not in MS4 (INSTATE)	2
Social Indicator	% Lake:Estuary TMDLs Completed (INSTATE)	1
Social Indicator	% Stream TMDLs Completed (INSTATE)	1
Social Indicator	CC Score (INSTATE)	1
Social Indicator	% Lake:/Estuary Assessed (INSTATE)	1
Social Indicator	Land Use Complexity (INSTATE)	1
Social Indicator	PWS Wells (#/sq. mi.) (INSTATE)	1

Nonpoint Source Management Section – PRIORITY SEGMENTS

Table 4: List of Impairment Causes Likely Due to Nonpoint Source Pollution

Cause
Algae
<i>Escherichia Coli (E. Coli)</i>
Bottom Deposits
Flocculant Masses
Phosphorus, Total
Scum/Foam
Turbidity
Benthic Macroinvertebrates Bioassessments
Dissolved Oxygen
Nutrient/Eutrophication Biological Indicators
Sedimentation/Siltation
Total Suspended Solids (TSS)
Temperature
Chloride
Harmful Algal Blooms
Fecal Coliform
<i>Enterococcus</i>
Transparency / Clarity
Chlorophyll-a
Dissolved Oxygen Supersaturation
Fish Passage Barrier
Estuarine Bioassessments
Nitrogen, Total
Combined Biota/Habitat Bioassessments
Alteration in stream-side or littoral vegetative covers
Habitat Assessment
Nutrients

Nonpoint Source Management Section – PRIORITY SEGMENTS

**Table 5: List of Priority Impairment Causes Likely Due to Nonpoint Source Pollution
(all related to pathogen or nutrient impairments)**

<i>Escherichia Coli (E. Coli)</i>
Algae
Phosphorus, Total
Nutrient/Eutrophication Biological Indicators
Harmful Algal Blooms
Chlorophyll-a
Nitrogen, Total
Nutrients

References

Olivero-Sheldon, A. and M.G. Anderson. 2016. Northeast Lake and Pond Classification. The Nature Conservancy, Eastern Conservation Science, Eastern Regional Office. Boston, MA

Nonpoint Source Management Section – HEALTHY WATERS

Protection of Unimpaired Waters

MassDEP recognizes that protecting areas of the state where water quality currently meets or exceeds applicable state standards is highly desirable. Proactive protection of healthy waters, particularly those that are at risk of impacts from nonpoint source pollutants, can be a more efficient use of public funds than the long-term restoration projects that would be needed if the waterbody is not protected and becomes impaired.

Healthy Watersheds Prioritization Methodology

Recovery Potential Screening (RPS) is a systematic, comparative method for identifying differences among watersheds that may influence their relative likelihood to be successfully restored or protected. The RPS approach involves identifying a group of watersheds to be compared and a specific purpose for comparison, selecting appropriate indicators in three categories (Ecological, Stressor, Social), calculating index values for the watersheds, and applying the results in strategic planning and prioritization. RPS was developed to provide states and other restoration planners with a systematic, flexible tool that could help them compare watershed differences in terms of key environmental and social factors affecting prospects for restoration success. As such, RPS provides water programs with an easy-to-use screening and comparison tool that is user-customizable for the geographic area of interest and a variety of specific comparison and prioritization purposes. The RPS Tool is a custom-coded Excel spreadsheet that performs all RPS calculations and generates RPS outputs (rank-ordered index tables, graphs and maps). It was developed several years ago to help users calculate Ecological, Stressor, Social, and Recovery Potential Integrated index scores. Using the RPS Tool and the recently released Preliminary Healthy Watersheds Assessments, a list of priority unimpaired/high-quality and threatened waters was developed.

A number of ecological, stressor and social indicators, all calculated at the Hydrological Unit Code (HUC) 12 watershed scale, were chosen to identify Healthy Watersheds for prioritization (Table G.1). The ecological indicators were chosen to integrate both land use indicators and biological indicators. Stressor indicators were chosen to highlight stress due to land use, nutrient loading, water use and aquatic connectivity. Social indicators were chosen to integrate a focus on water supply protection, watersheds with protected lands outside of urbanized areas, 319 and USDA NRCS project focus areas and other social metrics. For a definition of each metric see Table G.2.

Table G.1: Recovery Potential Screening Tool Indicator Setup

Indicator Type	Indicator Name	Weight
Ecological Indicator	Slope, Standard Deviation in WS	1
Ecological Indicator	% Rare Ecosystem in WS	1
Ecological Indicator	Stream Corridor (30.5M) % Forest (INSTATE)	2
Ecological Indicator	EBTJV Intact (INSTATE)	3
Ecological Indicator	NFHAP HCI (INSTATE)	3
Ecological Indicator	Confluences (#/mi) (INSTATE)	1
Ecological Indicator	Stream Density (mi/sqmi) (INSTATE)	1
Ecological Indicator	CFR_density_mi_perSqMi	3
Stressor Indicator	Watershed % Impervious (INSTATE)	1

Nonpoint Source Management Section – HEALTHY WATERS

Indicator Type	Indicator Name	Weight
Stressor Indicator	Watershed % Cropland (INSTATE)	1
Stressor Indicator	Watershed % Pasture (INSTATE)	1
Stressor Indicator	Anthropogenic Cover % Change (INSTATE)	1
Stressor Indicator	CWDI (INSTATE)	1
Stressor Indicator	Aquatic Barriers / Dams (#/sqmi) (INSTATE)	1
Stressor Indicator	N Yield (lb/sqmi) (INSTATE)	1
Stressor Indicator	P Yield (lb/sqmi) (INSTATE)	1
Stressor Indicator	Dam Storage Ratio in WS	1
Social Indicator	% of HUC12 Instate (MA)	1
Social Indicator	% Protected Land, All Types (2019)	5
Social Indicator	USDA Conservation Reserve Program Area in WS	1
Social Indicator	National Wild and Scenic Rivers, Presence/Absence in WS	1
Social Indicator	% Drinking Water Source Protection Area, Surface	3
Social Indicator	% Drinking Water Source Protection Area, Ground	3
Social Indicator	303d Vision Priority Flag	1
Social Indicator	Nonpoint Control Projects Count	1
Social Indicator	Land Use Complexity (INSTATE)	1
Social Indicator	NRCS Obligated Projects (#/sq. mi.) (INSTATE)	1
Social Indicator	% Area not in MS4 (INSTATE)	5
Social Indicator	CC Score (INSTATE)	1

Watersheds showing high recoverability potential (Recovery Potential Index in the upper quartile) were selected for further analysis. All unimpaired waterbodies with MassDEP defined segments were assigned their appropriate recovery potential score by HUC12. For these 250 waterbodies the EPA Preliminary Healthy Watershed Assessment metrics were examined. The statewide vulnerability index scores (PHWA_VULN_NDX_ST_2016) were assigned to each waterbody. Waterbodies within each HUC12 were assigned the same vulnerability index score. For these 250 waterbodies the percentile of each waterbodies' statewide vulnerability index score was calculated. The waterbodies were then assigned a vulnerability category. Waterbodies scoring in the upper quartile were assigned a high vulnerability rating, with those in the 25th to 75th percentile being assigned a medium vulnerability rating and the first quartile was assigned low vulnerability rating. Waterbodies in a HUC12 where the majority of the watershed was located outside of Massachusetts were not assigned a vulnerability rating. The goal of this work was to identify healthy watersheds with high vulnerability as a priority for protection. See Table G.3 in for Priority Healthy Waterbodies by MassDEP Segment ID and Vulnerability Status. Using an analysis of mussel richness and MassDEP segments (Carmignani 2020) healthy waterbodies which have a mussel richness of 3 or greater are starred and bolded.

References

USEPA recently released the Preliminary Healthy Watersheds Assessments, which can be found [here](#).

Carmignani, J. 2020. Mussel Richness by MassDEP segment (GIS layer file). Email to Matthew Reardon, dated November 10, 2020.

Nonpoint Source Management Section – HEALTHY WATERS

Table 2: Recovery Potential Screening Tool Indicator Names and Definitions

Indicator Type	Indicator Name	Weight	Definition
Ecological Indicator	Slope, Standard Deviation in WS	1	Standard deviation of slope in the HUC12 (in degrees). Source data was the NHDPlus2 National Elevation Dataset (NED) Snapshot. (See also NED Snapshot glossary definition).
Ecological Indicator	% Rare Ecosystem in WS	1	Percent of the HUC12 classified as a rare ecosystem based on ecosystem size, shape, and type. Source data was the U.S. Geological Survey (USGS) National Gap Analysis Program (GAP) land cover dataset (version 2, 2011). Ecological systems in the GAP land cover dataset were scored according to relative rarity based on area, spatial pattern, and uniqueness. Rarity scores ranged from 0 (not rare) to 100 (very rare); any ecological system with a score of 75 or greater was classified as rare. Equation used: Area of Rare Ecosystems in HUC12 / HUC12 Land Area * 100. This indicator was calculated for EPA EnviroAtlas. Additional information on source data and calculation methods can be found here .
Ecological Indicator	Stream Corridor (30.5M) % Forest (INSTATE)	2	Forests category from MA Land Use 2005. "(INSTATE)" denotes that the indicator was only calculated for the HUC areas within Massachusetts.
Ecological Indicator	EBTJV Intact (INSTATE)	3	Watersheds identified as having intact brook trout habitat by the Eastern Brook trout Joint Venture (HUC12 scale only). "(INSTATE)" denotes that the indicator was only calculated for the HUC areas within Massachusetts.
Ecological Indicator	NFHAP HCI (INSTATE)	3	Habitat Condition Index from National Fish habitat Action Plan Assessment. "(INSTATE)" denotes that the indicator was only calculated for the HUC areas within Massachusetts.
Ecological Indicator	Confluences (#/mi) (INSTATE)	1	All stream confluences/stream miles. "(INSTATE)" denotes that the indicator was only calculated for the HUC areas within Massachusetts.
Ecological Indicator	Stream Density (mi/sqmi) (INSTATE)	1	Stream miles divided by watershed square miles. "(INSTATE)" denotes that the indicator was only calculated for the areas within Massachusetts.
Ecological Indicator	CFR_density_mi_perSqMi	3	Density of DFG Coldwater Fishery Resource waterbodies in miles per square mile of the HUC12.
Stressor Indicator	Watershed % Impervious (INSTATE)	1	% Impervious area from MA dataset (1M resolution). "(INSTATE)" denotes that the indicator was only calculated for the HUC areas within Massachusetts.

Nonpoint Source Management Section – HEALTHY WATERS

Indicator Type	Indicator Name	Weight	Definition
Stressor Indicator	Watershed % Cropland (INSTATE)	1	Cropland, Orchard, Nursery categories from MA Land Use 2005. "(INSTATE)" denotes that the indicator was only calculated for the HUC areas within Massachusetts.
Stressor Indicator	Watershed % Pasture (INSTATE)	1	Pasture category from MA Land Use 2005. "(INSTATE)" denotes that the indicator was only calculated for the HUC areas within Massachusetts.
Stressor Indicator	Anthropogenic Cover % Change (INSTATE)	1	%Percent change between NLCD 2001 and NLCD 2006 urban and agricultural categories. "(INSTATE)" denotes that the indicator was only calculated for the HUC areas within Massachusetts.
Stressor Indicator	CWDI (INSTATE)	1	Combined Water Demand and Intensity Index - Higher score = ecologically better flow conditions. Based on USGS metrics. "(INSTATE)" denotes that the indicator was only calculated for the HUC areas within Massachusetts.
Stressor Indicator	Aquatic Barriers / Dams (#/sqmi) (INSTATE)	1	Number of dams from MA DCR Dams dataset per square mile. "(INSTATE)" denotes that the indicator was only calculated for the HUC areas within Massachusetts.
Stressor Indicator	N Yield (lb/sqmi) (INSTATE)	1	USGS SPARROW Incremental Model Results for Nitrogen Yield. "(INSTATE)" denotes that the indicator was only calculated for the HUC areas within Massachusetts.
Stressor Indicator	P Yield (lb/sqmi) (INSTATE)	1	USGS SPARROW Incremental Model Results for Phosphorus Yield. "(INSTATE)" denotes that the indicator was only calculated for the HUC areas within Massachusetts.

Nonpoint Source Management Section – HEALTHY WATERS

Indicator Type	Indicator Name	Weight	Definition
Stressor Indicator	Dam Storage Ratio in WS	1	The ratio of dam storage volume in the HUC12 to pre-development annual streamflow at the HUC12 outlet (acre-feet/acre-feet per year). Source data for dam storage was the 2012 National Anthropogenic Barrier Dataset (NABD; downloaded August 2013), a national geospatial dataset of dam locations and attributes. The NABD was created by editing the US Army Corps of Engineer's 2009 National Inventory of Dams (NID) to delete dams removed after the release of the 2009 NID and duplicate dams along state boundaries. Dam storage volume was calculated by summing the normal storage volume reported in the 2012 NABD for dams located in the HUC12. For dams with normal storage volume reported as zero acre-feet, the maximum storage volume was used instead. Source data for streamflow was the NHDPlus2 Extended Unit Runoff Method (EROM) attribute table (downloaded February 2016). The NHDPlus2 EROM table contains pre-development mean annual flow estimates for the period 1971-2000 for stream features in the NHDPlus2. Pre-development mean annual streamflow at the HUC12 outlet was set to the value reported for the NHDPlus2 stream reach located at the HUC12 outlet in the NHDPlus2 EROM table (field Q0001C). Blank values indicate that the HUC12 contains a dam but does not have dam storage reported in the NABD and/or does not have reference streamflow reported in NHDPlus2.
Social Indicator	% of HUC12 Instate (MA)	1	Percent of total HUC12 area that is comprised by Massachusetts. Source data was the US Census Bureau 2013 TIGER state boundary dataset , downloaded in July 2013. Equation used: $\text{Instate Area} / \text{HUC12 Area} * 100$.
Social Indicator	% Protected Land, All Types (2019)	5	Percent of the HUC12 that is designated as protected by the Protected Areas Database of the United States Version 2.0. Source data was the Protected Areas Database of the United States Version 2.0 (March 2019 update) from the USGS Gap Analysis Program ; all feature class types were included in the analysis ("FeatClass" = designation, easement, fee, marine, or proclamation). All protected lands polygons within the database were used for the calculation. Equation used: $\text{PADS Protected Land Area} / \text{HUC12 Area} * 100$.

Nonpoint Source Management Section – HEALTHY WATERS

Indicator Type	Indicator Name	Weight	Definition
Social Indicator	USDA Conservation Reserve Program Area in WS	1	The area of land enrolled in the US Department of Agriculture (USDA) Conservation Reserve Program (CRP) in the HUC12. Under the USDA CRP, landowners enroll environmentally sensitive land to discontinue crop production and instead plant perennial species that provide environmental benefits. Values reflect categorical ranges of enrolled acres in the HUC12: 1= 0 acres; 2= <50 acres; 3= 50-100 acres; 4= 100-200 acres; 5= 200-500 acres; 6= 500-1000 acres; 7= >1000 acres. Source data were USDA Farm Service Agency of Conservation Reserve Program enrollment boundaries from circa-January 2016. This indicator was calculated for EPA EnviroAtlas. Additional information on source data and calculation methods can be found here .
Social Indicator	National Wild and Scenic Rivers, Presence/Absence in WS	1	Presence/absence of waters designated as National Wild and Scenic Rivers in the HUC12. A value of 1 indicates that the HUC12 contains a National Wild and Scenic river. A threshold of 0.25 river miles was used as a cutoff value for defining presence/absence. Source data was the National Wild and Scenic River Segments map layer maintained by the US Forest Service, National Park Service, Bureau of Land Management and the Fish and Wildlife Service (October 2019 version).
Social Indicator	% Drinking Water Source Protection Area, Surface	3	Percent of the HUC12 that is classified as a source water protection area (SPA) for public water system (PWS) drinking water sources. Only includes SPAs for surface water sources of drinking water. Source data was a SPA geospatial dataset from the EPA Safe Drinking Water Information System (SDWIS; January 2018 version). Equation used: SPA Area in HUC12 / HUC12 Area * 100.
Social Indicator	% Drinking Water Source Protection Area, Ground	3	Percent of the HUC12 that is classified as a source water protection area (SPA) for public water system (PWS) drinking water sources. Only includes SPAs for groundwater sources of drinking water. Source data was a SPA geospatial dataset from the EPA Safe Drinking Water Information System (SDWIS; January 2018 version). Equation used: SPA Area in HUC12 / HUC12 Area * 100.
Social Indicator	303d Vision Priority Flag	1	Presence of a priority area for water quality restoration or protection within the HUC12. Priority areas for water quality restoration and protection are identified by states under the Clean Water Act 303d Vision . Source data was the US EPA Office of Water database of state priority areas indexed to NHDPlus2 catchments (end of Federal Fiscal Year 2017 version; accessed March 29, 2018).

Nonpoint Source Management Section – HEALTHY WATERS

Indicator Type	Indicator Name	Weight	Definition
Social Indicator	Nonpoint Control Projects Count	1	Count of nonpoint source pollution control projects funded by Clean Water Act Section 319 grants located in the HUC12. Source data was the EPA Grants Reporting and Tracking System (GRTS; accessed June 2018). GRTS is the primary tool for tracking Section 319 funded projects by EPA's nonpoint source Pollution Control Program. A query of the GRTS database was performed in June 2018 to quantify the number of nonpoint source projects per HUC12. Counts include projects entered into GRTS between January 2002 through June 2018 that are ongoing or completed and that have a HUC12 ID for the project stored in GRTS.
Social Indicator	Land Use Complexity (INSTATE)	1	Average polygon size from land use dataset in each HUCwatershed. "(INSTATE)" denotes that the indicator was only calculated for the HUC areas within Massachusetts.
Social Indicator	NRCS Obligated Projects (#/sq. mi.) (INSTATE)	1	Fully funded USDA Farm Bill Projects. "(INSTATE)" denotes that the indicator was only calculated for the HUC areas within Massachusetts.
Social Indicator	% Area not in MS4 (INSTATE)	5	Areas eligible for 319 funds. "(INSTATE)" denotes that the indicator was only calculated for the HUC areas within Massachusetts.
Social Indicator	CC Score (INSTATE)	1	Commonwealth Capital Score spatially weighted average from all towns within each HUC watershed. "(INSTATE)" denotes that the indicator was only calculated for the HUC areas within Massachusetts.

Nonpoint Source Management Section – HEALTHY WATERS

Table 3: Priority Healthy Waterbodies by MassDEP Segment ID and Vulnerability Status

Basin ID	Basin Name	Segment ID	Waterbody Name	Description	Size (miles)	Class (Qualifiers)	HUC12 Number	HUC12 Name	Ecological Index	Stressor Index	Social Index	RPI Score	RPI Rank	Majority County	Slope_Mean_Value_in_HUC12_Watershed	Perc_MS4_in_HUC12_Watershed	PHWA_HEALTH_NDX_PCT_2016	PHWA_VULN_NDX_ST_2016	Vulnerability Percentile Only Prioritized Waterbodies	Vulnerability Status (within prioritized waterbodies only)
11	Hudson: Hoosic	MA11-06	Green River	Headwaters, perennial portion, southwest of Sugarloaf Mountain (west of Ingraham Road), New Ashford to mouth at confluence with Hoosic River, Williamstown.	12.5	B (CWF)	020200030604	Green River	73.68	7.7	57.34	74.44	3	Berkshire County-MA	13.4	0.0	79.02	0.15	0.68	Medium
11	Hudson: Hoosic	MA11-21	East Branch Green River	Headwaters, perennial portion, northeast of Sugarloaf Mountain, New Ashford to mouth at confluence with Green River, New Ashford.	2.2	B	020200030604	Green River	73.68	7.7	57.34	74.44	3	Berkshire County-MA	13.4	0.0	79.02	0.15	0.68	Medium
11	Hudson: Hoosic	MA11-22	West Branch Green River	Headwaters, perennial portion, west of Route 43, Hancock (near New York border) to mouth at confluence with Green River, Williamstown.	7.9	B	020200030604	Green River	73.68	7.7	57.34	74.44	3	Berkshire County-MA	13.4	0.0	79.02	0.15	0.68	Medium
11	Hudson: Hoosic	MA11-28	Hopper Brook	Headwaters, perennial portion, east of Sperry Road, Williamstown to mouth at confluence with the Green River, Williamstown.	4	B	020200030604	Green River	73.68	7.7	57.34	74.44	3	Berkshire County-MA	13.4	0.0	79.02	0.15	0.68	Medium
11	Hudson: Hoosic	MA11-06	Green River	Headwaters, perennial portion, southwest of Sugarloaf Mountain (west of Ingraham Road), New Ashford to mouth at confluence with Hoosic River, Williamstown.	12.5	B (CWF)	020200030605	Hemlock Brook-Hoosic River	67.61	6.24	57.44	72.93	10	Berkshire County-MA	11.2	0.0	76.10	0.16	0.70	Medium
11	Hudson: Hoosic	MA11-09	Hemlock Brook	Headwaters, perennial portion, south of Route 2 in the Taconic Trail State Park, Williamstown to mouth at confluence with the Hoosic River, Williamstown.	7.1	B (CWF)	020200030605	Hemlock Brook-Hoosic River	67.61	6.24	57.44	72.93	10	Berkshire County-MA	11.2	0.0	76.10	0.16	0.70	Medium

* 3 or more freshwater mussel species (Carmignani 2020)

Nonpoint Source Management Section – HEALTHY WATERS

Basin ID	Basin Name	Segment ID	Waterbody Name	Description	Size (miles)	Class (Qualifiers)	HUC12 Number	HUC12 Name	Ecological Index	Stressor Index	Social Index	RPI Score	RPI Rank	Majority County	Slope_Mean_Value_in_HUC12_Watershed	Perc_MS4_in_HUC12_Watershed	PHWA_HEALTH_NDX_PCT_2016	PHWA_VULN_NDX_ST_2016	Vulnerability Percentile Only Prioritized Waterbodies	Vulnerability Status (within prioritized waterbodies only)
11	Hudson: Hoosic	MA11-25	Buxton Brook	Headwaters, perennial portion, west of Petersburg Road, Williamstown to mouth at confluence with Hemlock Brook, Williamstown.	1.3	B (CWF)	020200030605	Hemlock Brook-Hoosic River	67.61	6.24	57.44	72.93	10	Berkshire County-MA	11.2	0.0	76.10	0.16	0.70	Medium
11	Hudson: Hoosic	MA11-04	Hoosic River	Adams WWTP discharge (NPDES: MA0100315), Adams to confluence with North Branch Hoosic River, North Adams.	5.4	B (WWF)	020200030605	Hemlock Brook-Hoosic River	67.61	6.24	57.44	72.93	10	Berkshire County-MA	11.2	0.0	76.10	0.16	0.70	Medium
11	Hudson: Hoosic	MA11-20	Paull Brook	Headwaters, outlet of Mt. Williams Reservoir, North Adams to mouth at confluence with unnamed tributary, Williamstown.	2.1	B	020200030605	Hemlock Brook-Hoosic River	67.61	6.24	57.44	72.93	10	Berkshire County-MA	11.2	0.0	76.10	0.16	0.70	Medium
11	Hudson: Hoosic	MA11-23	Broad Brook	From Vermont state line, Williamstown to mouth at confluence with the Hoosic River, Williamstown.	2.2	B	020200030605	Hemlock Brook-Hoosic River	67.61	6.24	57.44	72.93	10	Berkshire County-MA	11.2	0.0	76.10	0.16	0.70	Medium
12	Hudson: Kinderhook	MA12-02	Bently Brook	Headwaters, perennial portion, south of Brodie Mountain Road, Lanesborough to mouth at confluence with Kinderhook Creek, Hancock.	2.1	B	020200060601	West Brook-Kinderhook Creek	62.85	3.48	36.21	65.19	36	Rensselaer County-NY	10.0	0.0	NA	NA	Not Classified	High
21	Housatonic	MA21-32	Tyler Brook	Headwaters, northwest of Driscoll Road, Windsor to mouth at confluence with Windsor Brook, Windsor.	2.6	A (PWS, ORW, CWF)	011000050102	Wahconah Falls Brook	69.79	3.41	45.82	70.73	14	Berkshire County-MA	5.2	2.6	90.73	0.11	0.59	Medium
21	Housatonic	MA21-09	Windsor Brook	Headwaters, southeast of Fobes Hill (west of Savoy Hollow Road), Windsor to mouth at inlet Windsor Reservoir, Hinsdale.	6.1	A (PWS, ORW)	011000050102	Wahconah Falls Brook	69.79	3.41	45.82	70.73	14	Berkshire County-MA	5.2	2.6	90.73	0.11	0.59	Medium
21	Housatonic	MA21-12	Cady Brook	Headwaters, northwest corner Peru, to mouth at inlet of Windsor Reservoir, Hinsdale.	3.5	A (PWS, ORW)	011000050102	Wahconah Falls Brook	69.79	3.41	45.82	70.73	14	Berkshire County-MA	5.2	2.6	90.73	0.11	0.59	Medium

* 3 or more freshwater mussel species (Carmignani 2020)

Nonpoint Source Management Section – HEALTHY WATERS

Basin ID	Basin Name	Segment ID	Waterbody Name	Description	Size (miles)	Class (Qualifiers)	HUC12 Number	HUC12 Name	Ecological Index	Stressor Index	Social Index	RPI Score	RPI Rank	Majority County	Slope_Mean_Value_in_HUC12_Watershed	Perc_MS4_in_HUC12_Watershed	PHWA_HEALTH_NDX_PCT_2016	PHWA_VULN_NDX_ST_2016	Vulnerability Percentile Only Prioritized Waterbodies	Vulnerability Status (within prioritized waterbodies only)
21	Housatonic	MA21-10	Anthony Brook	Headwaters, outlet Anthony Pond, Dalton to mouth at confluence with Wahconah Falls Brook, Dalton.	2.6	B	011000050102	Wahconah Falls Brook	69.79	3.41	45.82	70.73	14	Berkshire County-MA	5.2	2.6	90.73	0.11	0.59	Medium
21	Housatonic	MA21-11	Wahconah Falls Brook	Headwaters, outlet Windsor Reservoir, Windsor to mouth at confluence with East Branch Housatonic River, Dalton.	3.4	B	011000050102	Wahconah Falls Brook	69.79	3.41	45.82	70.73	14	Berkshire County-MA	5.2	2.6	90.73	0.11	0.59	Medium
21	Housatonic	MA21-34	Churchill Brook	Headwaters, perennial portion in the Pittsfield State Forest, Hancock (north of Honwee Mountain, Lanesborough) to mouth at inlet Onota Lake, Pittsfield.	2.8	B (CWF)	011000050101	West Branch Housatonic River	69.22	7.13	34.95	65.68	33	Berkshire County-MA	7.1	25.8	52.20	0.24	0.94	High
21	Housatonic	MA21-36	Town Brook	Headwaters, perennial portion, Lanesborough to mouth at inlet Pontoosuc Lake, Lanesborough.	7.9	B	011000050101	West Branch Housatonic River	69.22	7.13	34.95	65.68	33	Berkshire County-MA	7.1	25.8	52.20	0.24	0.94	High
21	Housatonic	MA21-37	Rawson Brook	Headwaters, north of Cronk Road, Monterey to mouth at confluence with Konkapot River, Monterey.	5.9	B	011000050301	Konkapot River	64.09	6.28	36.58	64.8	40	Berkshire County-MA	5.8	0.0	65.85	0.21	0.84	High
31	Farmington	MA31-19	Slocum Brook	Headwaters, outlet small unnamed wetland pond south of Hartland Road, Tolland to MA/CT border, Tolland.	3.3	B (CWF, HQW)	010802070204	Lower West Branch Farmington River	38.15	2.7	63.27	66.24	26	Litchfield County-CT	7.1	3.6	NA	NA	Not Classified	Not Classified
31	Farmington	MA31-20	Taylor Brook	Headwaters, west of Clubhouse Road, Tolland to mouth at confluence with Slocum Brook, Tolland.	3.3	B (CWF, HQW)	010802070204	Lower West Branch Farmington River	38.15	2.7	63.27	66.24	26	Litchfield County-CT	7.1	3.6	NA	NA	Not Classified	Not Classified
31	Farmington	MA31-22	Thorp Brook	Headwaters, east of Dodds Mountain, south of Sears Road, Sandisfield to mouth at confluence with West Branch Farmington River, Sandisfield.	2.7	B (CWF, HQW)	010802070204	Lower West Branch Farmington River	38.15	2.7	63.27	66.24	26	Litchfield County-CT	7.1	3.6	NA	NA	Not Classified	Not Classified

* 3 or more freshwater mussel species (Carmignani 2020)

Nonpoint Source Management Section – HEALTHY WATERS

Basin ID	Basin Name	Segment ID	Waterbody Name	Description	Size (miles)	Class (Qualifiers)	HUC12 Number	HUC12 Name	Ecological Index	Stressor Index	Social Index	RPI Score	RPI Rank	Majority County	Slope_Mean_Value_in_HUC12_Watershed	Perc_MS4_in_HUC12_Watershed	PHWA_HEAL_TH_NDX_ST_PCT_2016	PHWA_VULN_NDX_ST_2016	Vulnerability Percentile Only Prioritized Waterbodies	Vulnerability Status (within prioritized waterbodies only)
31	Farmington	MA31-23	Moody Brook	Headwaters, outlet Trout Pond, Tolland to mouth at confluence with West Branch Farmington River, Sandisfield.	1.8	B (CWF, HQW)	010802070204	Lower West Branch Farmington River	38.15	2.7	63.27	66.24	26	Litchfield County-CT	7.1	3.6	NA	NA	Not Classified	Not Classified
31	Farmington	MA31-24	Richardson Brook	Headwaters, north of New Boston Road (Route 57), Tolland to mouth at confluence with Moody Brook, Tolland.	1.3	B (CWF, HQW)	010802070204	Lower West Branch Farmington River	38.15	2.7	63.27	66.24	26	Litchfield County-CT	7.1	3.6	NA	NA	Not Classified	Not Classified
31	Farmington	MA31-16	Hubbard Brook	Headwaters, confluence Babcock Brook and Hall Pond Brook, Tolland to MA/CT border Granville.	4	B (CWF, HQW)	010802070301	Hubbard River	65.75	3.08	47.15	69.94	19	Hampden County-MA	5.0	0.0	NA	0.20	0.76	High
31	Farmington	MA31-30	Pond Brook	Headwaters, outlet Parsons Pond, Granville to mouth at confluence with Hubbard Brook, Granville.	4.6	B (CWF, HQW)	010802070301	Hubbard River	65.75	3.08	47.15	69.94	19	Hampden County-MA	5.0	0.0	NA	0.20	0.76	High
31	Farmington	MA31-31	Halfway Brook	Headwaters, outlet of wetland in Granville State Forest, Tolland to mouth at confluence with Hubbard Brook, Granville.	1.8	B (CWF, HQW)	010802070301	Hubbard River	65.75	3.08	47.15	69.94	19	Hampden County-MA	5.0	0.0	NA	0.20	0.76	High
31	Farmington	MA31-32	Babcock Brook	Headwaters west of Amos Case Road, Tolland to mouth at confluence with Hall Pond Brook (forming headwaters Hubbard Brook), Tolland.	3.3	B (CWF, HQW)	010802070301	Hubbard River	65.75	3.08	47.15	69.94	19	Hampden County-MA	5.0	0.0	NA	0.20	0.76	High
31	Farmington	MA31-34	Hall Pond Brook	Headwaters, outlet Hall Pond, Tolland to mouth at confluence with Babcock Brook (forming headwaters Hubbard Brook), Tolland.	2.3	B (CWF, HQW)	010802070301	Hubbard River	65.75	3.08	47.15	69.94	19	Hampden County-MA	5.0	0.0	NA	0.20	0.76	High
31	Farmington	MA31-02	Fall River	Headwaters, outlet Larkum Pond, Otis to mouth at confluence with West Branch Farmington River, Otis.	0.8	B (CWF, HQW)	010802070202	Upper West Branch Farmington River	40.91	2.56	51.87	63.41	50	Berkshire County-MA	5.9	0.0	86.34	0.22	0.85	High
31	Farmington	MA31-04	Shales Brook	Source north of Tyringham Road, Becket to mouth at inlet Shaw Pond, Becket.	1.2	B (CWF, HQW)	010802070202	Upper West Branch Farmington River	40.91	2.56	51.87	63.41	50	Berkshire County-MA	5.9	0.0	86.34	0.22	0.85	High

* 3 or more freshwater mussel species (Carmignani 2020)

Nonpoint Source Management Section – HEALTHY WATERS

Basin ID	Basin Name	Segment ID	Waterbody Name	Description	Size (miles)	Class (Qualifiers)	HUC12 Number	HUC12 Name	Ecological Index	Stressor Index	Social Index	RPI Score	RPI Rank	Majority County	Slope_Mean_Value_in_HUC12_Watershed	Perc_MS4_in_HUC12_Watershed	PHWA_HEALTH_NDX_PCT_2016	PHWA_VULN_NDX_ST_2016	Vulnerability Percentile Only Prioritized Waterbodies	Vulnerability Status (within prioritized waterbodies only)
31	Farmington	MA31-05	Unnamed Tributary	Unnamed tributary to Shaw Pond, source in wetlands southwest of Route 90 and east of Route 20, Becket to mouth at inlet Shaw Pond, Becket (excluding "gravel pit" pond).	1.3	B (CWF, HQW)	010802070202	Upper West Branch Farmington River	40.91	2.56	51.87	63.41	50	Berkshire County-MA	5.9	0.0	86.34	0.22	0.85	High
31	Farmington	MA31-07	Unnamed Tributary	Source, outlet Shaw Pond, Becket/Otis to mouth at inlet Hayden Pond, Otis.	0.9	B (CWF, HQW)	010802070202	Upper West Branch Farmington River	40.91	2.56	51.87	63.41	50	Berkshire County-MA	5.9	0.0	86.34	0.22	0.85	High
31	Farmington	MA31-08	Cone Brook	Headwaters, drainage from Angerman Swamp in Beartown State Forest, Otis to mouth at inlet Hayden Pond, Otis.	2.1	B (CWF, HQW)	010802070202	Upper West Branch Farmington River	40.91	2.56	51.87	63.41	50	Berkshire County-MA	5.9	0.0	86.34	0.22	0.85	High
31	Farmington	MA31-09*	Unnamed Tributary	Unnamed tributary to West Branch Farmington River, source north of Route 23 and east of Harrington Road, Otis to mouth at confluence with West Branch Farmington River, Otis.	2	B (CWF, HQW)	010802070202	Upper West Branch Farmington River	40.91	2.56	51.87	63.41	50	Berkshire County-MA	5.9	0.0	86.34	0.22	0.85	High
31	Farmington	MA31-10	Dimmock Brook	Outlet of Dimmock Brook Pond, Otis to mouth at confluence with West Branch Farmington River, Otis.	1	B (CWF, HQW)	010802070202	Upper West Branch Farmington River	40.91	2.56	51.87	63.41	50	Berkshire County-MA	5.9	0.0	86.34	0.22	0.85	High
31	Farmington	MA31-28	Miner Brook	Headwaters, outlet wetland east of North Beech Plain Road, Sandisfield to mouth at confluence with West Branch Farmington River, Sandisfield.	1.5	B (CWF, HQW)	010802070202	Upper West Branch Farmington River	40.91	2.56	51.87	63.41	50	Berkshire County-MA	5.9	0.0	86.34	0.22	0.85	High
32	Westfield	MA32-01	West Branch Westfield River	Headwaters, confluence of Depot Brook and Yokum Brook, Becket to mouth at confluence with Westfield River, Huntington (HQW qualifier applies to portion of river upstream of Chester Center).	17.2	B (CWF, HQW*)	010802060201	Upper West Branch Westfield River	69.57	3.57	54.56	73.52	7	Berkshire County-MA	7.3	0.0	NA	0.10	0.46	Medium

* 3 or more freshwater mussel species (Carmignani 2020)

Nonpoint Source Management Section – HEALTHY WATERS

Basin ID	Basin Name	Segment ID	Waterbody Name	Description	Size (miles)	Class (Qualifiers)	HUC12 Number	HUC12 Name	Ecological Index	Stressor Index	Social Index	RPI Score	RPI Rank	Majority County	Slope_Mean_Value_in_HUC12_Watershed	Perc_MS4_in_HUC12_Watershed	PHWA_HEALTH_NDX_PCT_2016	PHWA_VULN_NDX_ST_2016	Vulnerability Percentile Only Prioritized Waterbodies	Vulnerability Status (within prioritized waterbodies only)
32	Westfield	MA32-17	Depot Brook	Source, north of Beach Road, Washington to mouth at confluence with Yokum Brook (forming headwaters of West Branch Westfield River), Becket.	5.9	B (CWF)	010802060201	Upper West Branch Westfield River	69.57	3.57	54.56	73.52	7	Berkshire County-MA	7.3	0.0	NA	0.10	0.46	Medium
32	Westfield	MA32-18	Shaker Mill Brook	Headwaters, west of Watson Road, Washington to mouth at confluence with Depot Brook, Becket.	4.1	B (CWF)	010802060201	Upper West Branch Westfield River	69.57	3.57	54.56	73.52	7	Berkshire County-MA	7.3	0.0	NA	0.10	0.46	Medium
32	Westfield	MA32-19	Yokum Brook	Headwaters, outlet Buckley-Dunton Lake, south of County Road, Becket to mouth at confluence with Depot Brook (forming headwaters of West Branch Westfield River), Becket.	4	B (CWF)	010802060201	Upper West Branch Westfield River	69.57	3.57	54.56	73.52	7	Berkshire County-MA	7.3	0.0	NA	0.10	0.46	Medium
32	Westfield	MA32-20	Walker Brook	Headwaters, outlet Center Pond (north of YMCA Road), Becket to mouth at confluence with West Branch Westfield River, Chester.	7.1	B (CWF)	010802060201	Upper West Branch Westfield River	69.57	3.57	54.56	73.52	7	Berkshire County-MA	7.3	0.0	NA	0.10	0.46	Medium
32	Westfield	MA32-42	Factory Brook	Headwaters, east of Ridge Road, in Middlefield State Forest, Peru to mouth at confluence with West Branch Westfield River, Middlefield.	7.6	B (CWF)	010802060201	Upper West Branch Westfield River	69.57	3.57	54.56	73.52	7	Berkshire County-MA	7.3	0.0	NA	0.10	0.46	Medium
32	Westfield	MA32-43	Geer Brook	Headwaters, outlet Garnet Lake, Peru to mouth at confluence with Factory Brook, Middlefield.	1.8	B (CWF)	010802060201	Upper West Branch Westfield River	69.57	3.57	54.56	73.52	7	Berkshire County-MA	7.3	0.0	NA	0.10	0.46	Medium
32	Westfield	MA32-49	Mill Brook	Headwaters, south of Hawley Street, Plainfield to mouth at confluence with Westfield River, Cummington.	6	B (CWF)	010802060101	Mill Brook-Westfield River	71.57	4.5	52.56	73.21	8	Berkshire County-MA	6.8	0.0	89.27	0.07	0.07	Low

* 3 or more freshwater mussel species (Carmignani 2020)

Nonpoint Source Management Section – HEALTHY WATERS

Basin ID	Basin Name	Segment ID	Waterbody Name	Description	Size (miles)	Class (Qualifiers)	HUC12 Number	HUC12 Name	Ecological Index	Stressor Index	Social Index	RPI Score	RPI Rank	Majority County	Slope_Mean_Value_in_HUC12_Watershed	Perc_MS4_in_HUC12_Watershed	PHWA_HEALTH_NDX_PCT_2016	PHWA_VULN_NDX_ST_2016	Vulnerability Percentile Only Prioritized Waterbodies	Vulnerability Status (within prioritized waterbodies only)
32	Westfield	MA32-50	Bartlett Brook	Headwaters (perennial portion), between Mountain and Prospect streets, Plainfield to mouth at confluence with Westfield River, Cummington.	2	B (CWF)	010802060101	Mill Brook-Westfield River	71.57	4.5	52.56	73.21	8	Berkshire County-MA	6.8	0.0	89.27	0.07	0.07	Low
32	Westfield	MA32-51	Westfield Brook	Headwaters, outlet wetland north of Hill Cemetery Road, Windsor to mouth at confluence with Westfield River, Cummington.	8.6	B (CWF)	010802060101	Mill Brook-Westfield River	71.57	4.5	52.56	73.21	8	Berkshire County-MA	6.8	0.0	89.27	0.07	0.07	Low
32	Westfield	MA32-52	Shaw Brook	Headwaters, north of Shaw Road, Windsor to mouth at confluence with Westfield Brook, Windsor.	2.2	B (CWF)	010802060101	Mill Brook-Westfield River	71.57	4.5	52.56	73.21	8	Berkshire County-MA	6.8	0.0	89.27	0.07	0.07	Low
32	Westfield	MA32-53	Steep Bank Brook	Headwaters (perennial portion), northeast of Bates Road, Windsor to mouth at confluence with Westfield River, Windsor.	1	B (CWF)	010802060101	Mill Brook-Westfield River	71.57	4.5	52.56	73.21	8	Berkshire County-MA	6.8	0.0	89.27	0.07	0.07	Low
32	Westfield	MA32-11	Meadow Brook	Headwaters, outlet unnamed pond south of Route 116, Plainfield to mouth at confluence with Westfield River, Cummington.	4.6	B	010802060101	Mill Brook-Westfield River	71.57	4.5	52.56	73.21	8	Berkshire County-MA	6.8	0.0	89.27	0.07	0.07	Low
32	Westfield	MA32-03	Middle Branch Westfield River	Outlet Littleville Dam, Chester/Huntington to mouth at confluence with Westfield River, Huntington.	1.1	B (WWF, HQW)	010802060105	Little River-Westfield River	71.47	6.38	53.94	73.01	9	Hampshire County-MA	7.8	0.0	93.17	0.13	0.62	Medium
32	Westfield	MA32-12	Swift River	Headwaters, west of Plainfield Road, Hawley to mouth at confluence with Westfield River at village of Swift River, Cummington.	11.3	B (CWF)	010802060105	Little River-Westfield River	71.47	6.38	53.94	73.01	9	Hampshire County-MA	7.8	0.0	93.17	0.13	0.62	Medium
32	Westfield	MA32-44	Pond Brook	Headwaters, outlet Norwich Pond, Huntington to mouth at confluence with Westfield River, Huntington.	3.1	B (CWF)	010802060105	Little River-Westfield River	71.47	6.38	53.94	73.01	9	Hampshire County-MA	7.8	0.0	93.17	0.13	0.62	Medium

* 3 or more freshwater mussel species (Carmignani 2020)

Nonpoint Source Management Section – HEALTHY WATERS

Basin ID	Basin Name	Segment ID	Waterbody Name	Description	Size (miles)	Class (Qualifiers)	HUC12 Number	HUC12 Name	Ecological Index	Stressor Index	Social Index	RPI Score	RPI Rank	Majority County	Slope_Mean_Value_in_HUC12_Watershed	Perc_MS4_in_HUC12_Watershed	PHWA_HEALTH_NDX_PCT_2016	PHWA_VULN_NDX_ST_2016	Vulnerability Percentile Only Prioritized Waterbodies	Vulnerability Status (within prioritized waterbodies only)
32	Westfield	MA32-45	Bronson Brook	Headwaters, north of Trouble Road, Cummington to mouth at confluence with West Falls Branch, Worthington. (formerly identified by the Massachusetts Stream Classification Program as West Branch).	4.2	B (CWF)	010802060105	Little River-Westfield River	71.47	6.38	53.94	73.01	9	Hampshire County-MA	7.8	0.0	93.17	0.13	0.62	Medium
32	Westfield	MA32-46	Kearnery Brook	Headwaters, north of Powell Road and east of FAA Road, Cummington to mouth at confluence with Bronson Brook, Worthington.	3.2	B (CWF)	010802060105	Little River-Westfield River	71.47	6.38	53.94	73.01	9	Hampshire County-MA	7.8	0.0	93.17	0.13	0.62	Medium
32	Westfield	MA32-47	Tower Brook	Headwaters, north of Dodwells Road, Cummington to mouth at confluence with Westfield River, Chesterfield.	4.1	B (CWF)	010802060105	Little River-Westfield River	71.47	6.38	53.94	73.01	9	Hampshire County-MA	7.8	0.0	93.17	0.13	0.62	Medium
32	Westfield	MA32-14	Watts Stream	Headwaters, north of Buffington Hill Road, Worthington to mouth at confluence with Wards Stream (forming headwaters Little River), Ringville (locality in Worthington).	5.2	B	010802060105	Little River-Westfield River	71.47	6.38	53.94	73.01	9	Hampshire County-MA	7.8	0.0	93.17	0.13	0.62	Medium
32	Westfield	MA32-15	Wards Stream	Headwaters, south of Cold Street, Worthington to mouth at confluence with Watts Stream (forming headwaters Little River), Ringville (locality in Worthington).	5.1	B	010802060105	Little River-Westfield River	71.47	6.38	53.94	73.01	9	Hampshire County-MA	7.8	0.0	93.17	0.13	0.62	Medium
32	Westfield	MA32-05*	Westfield River	Confluence with Middle Branch Westfield River, Huntington to Route 20 bridge, Westfield.	17.7	B (WWF)	010802060105	Little River-Westfield River	71.47	6.38	53.94	73.01	9	Hampshire County-MA	7.8	0.0	93.17	0.13	0.62	Medium

* 3 or more freshwater mussel species (Carmignani 2020)

Nonpoint Source Management Section – HEALTHY WATERS

Basin ID	Basin Name	Segment ID	Waterbody Name	Description	Size (miles)	Class (Qualifiers)	HUC12 Number	HUC12 Name	Ecological Index	Stressor Index	Social Index	RPI Score	RPI Rank	Majority County	Slope_Mean_Value_in_HUC12_Watershed	Perc_MS4_in_HUC12_Watershed	PHWA_HEAL_TH_NDX_ST_PCT_2016	PHWA_VULN_NDX_ST_2016	Vulnerability Percentile Only Prioritized Waterbodies	Vulnerability Status (within prioritized waterbodies only)
32	Westfield	MA32-32	Kinne Brook	Headwaters (perennial portion), north of Adams Road, Worthington to mouth at confluence with Middle Branch Westfield River, Chester.	4	A (PWS, ORW, CWF)	010802060104	Middle Branch Westfield River	70.97	3.64	51.38	72.9	11	Hampshire County-MA	7.7	0.0	97.07	0.11	0.57	Medium
32	Westfield	MA32-64	Fuller Brook	Headwaters, outlet wetland west at Mongue Road, Peru to mouth at confluence with Middle Branch Westfield River, Worthington.	4.2	A (PWS, ORW, CWF)	010802060104	Middle Branch Westfield River	70.97	3.64	51.38	72.9	11	Hampshire County-MA	7.7	0.0	97.07	0.11	0.57	Medium
32	Westfield	MA32-10	Glendale Brook	Headwaters in a wetland in Peru State Forest, Peru to mouth at confluence with Middle Branch Westfield River, Middlefield.	6	A (PWS, ORW)	010802060104	Middle Branch Westfield River	70.97	3.64	51.38	72.9	11	Hampshire County-MA	7.7	0.0	97.07	0.11	0.57	Medium
32	Westfield	MA32-66	Middle Branch Westfield River	From Kinnebrook Road, Dayville (locality in Chester) to inlet of Littleville Lake, just upstream from boat ramp (off southern end of Kinnebrook Road), Chester.	0.6	A (PWS, ORW)	010802060104	Middle Branch Westfield River	70.97	3.64	51.38	72.9	11	Hampshire County-MA	7.7	0.0	97.07	0.11	0.57	Medium
32	Westfield	MA32-03	Middle Branch Westfield River	Outlet Littleville Dam, Chester/Huntington to mouth at confluence with Westfield River, Huntington.	1.1	B (WWF, HQW)	010802060104	Middle Branch Westfield River	70.97	3.64	51.38	72.9	11	Hampshire County-MA	7.7	0.0	97.07	0.11	0.57	Medium
32	Westfield	MA32-33	Bedlam Brook	Headwaters (perennial portion), north of Blandford Road, Blandford to mouth at confluence with Peebles Brook, Blandford.	2.8	A (PWS, ORW)	010802060302	Cobble Mountain Reservoir	68.31	5.37	47.99	70.31	16	Hampden County-MA	5.3	0.0	94.15	0.21	0.83	High
32	Westfield	MA32-01	West Branch Westfield River	Headwaters, confluence of Depot Brook and Yokum Brook, Becket to mouth at confluence with Westfield River, Huntington (HQW qualifier applies to portion of river upstream of Chester Center).	17.2	B (CWF, HQW*)	010802060202	Lower West Branch Westfield River	55.19	3.11	58.41	70.17	18	Hampden County-MA	8.4	0.0	95.12	0.17	0.72	Medium

* 3 or more freshwater mussel species (Carmignani 2020)

Nonpoint Source Management Section – HEALTHY WATERS

Basin ID	Basin Name	Segment ID	Waterbody Name	Description	Size (miles)	Class (Qualifiers)	HUC12 Number	HUC12 Name	Ecological Index	Stressor Index	Social Index	RPI Score	RPI Rank	Majority County	Slope_Mean_Value_in_HUC12_Watershed	Perc_MS4_in_HUC12_Watershed	PHWA_HEALTH_NDX_PCT_2016	PHWA_VULN_NDX_ST_2016	Vulnerability Percentile Only Prioritized Waterbodies	Vulnerability Status (within prioritized waterbodies only)
32	Westfield	MA32-20	Walker Brook	Headwaters, outlet Center Pond (north of YMCA Road), Becket to mouth at confluence with West Branch Westfield River, Chester.	7.1	B (CWF)	010802060202	Lower West Branch Westfield River	55.19	3.11	58.41	70.17	18	Hampden County-MA	8.4	0.0	95.12	0.17	0.72	Medium
32	Westfield	MA32-61	Roaring Brook	Headwaters, outlet small unnamed pond north of Lyman Road, Chester to mouth at confluence with West Branch Westfield River, Huntington.	4.5	B (CWF)	010802060202	Lower West Branch Westfield River	55.19	3.11	58.41	70.17	18	Hampden County-MA	8.4	0.0	95.12	0.17	0.72	Medium
32	Westfield	MA32-62	Abbott Brook	Headwaters (perennial portion), north of Abbott Hill Road, Chester to mouth at confluence with West Branch Westfield River, Chester.	2.5	B (CWF)	010802060202	Lower West Branch Westfield River	55.19	3.11	58.41	70.17	18	Hampden County-MA	8.4	0.0	95.12	0.17	0.72	Medium
32	Westfield	MA32-31	Sanderson Brook	Headwaters (perennial portion), in the Chester/Blandford State Forest, north of Chester Road, Blandford to mouth at confluence with West Branch Westfield River, Chester.	2.7	B	010802060202	Lower West Branch Westfield River	55.19	3.11	58.41	70.17	18	Hampden County-MA	8.4	0.0	95.12	0.17	0.72	Medium
32	Westfield	MA32-01	West Branch Westfield River	Headwaters, confluence of Depot Brook and Yokum Brook, Becket to mouth at confluence with Westfield River, Huntington (HQW qualifier applies to portion of river upstream of Chester Center).	17.2	B (CWF, HQW*)	010802060301	Moose Meadow Brook-Westfield River	51.81	6.38	53.09	66.18	28	Hampden County-MA	7.7	9.9	74.63	0.21	0.80	High
32	Westfield	MA32-30	Roaring Brook	Headwaters (perennial portion), north of Horse Hill in Huntington State Forest, east of County Road, Huntington to mouth at confluence with Westfield River, Montgomery.	4.3	B (CWF)	010802060301	Moose Meadow Brook-Westfield River	51.81	6.38	53.09	66.18	28	Hampden County-MA	7.7	9.9	74.63	0.21	0.80	High

* 3 or more freshwater mussel species (Carmignani 2020)

Nonpoint Source Management Section – HEALTHY WATERS

Basin ID	Basin Name	Segment ID	Waterbody Name	Description	Size (miles)	Class (Qualifiers)	HUC12 Number	HUC12 Name	Ecological Index	Stressor Index	Social Index	RPI Score	RPI Rank	Majority County	Slope_Mean_Value_in_HUC12_Watershed	Perc_MS4_in_HUC12_Watershed	PHWA_HEAL_TH_NDX_ST_PCT_2016	PHWA_VULN_NDX_ST_2016	Vulnerability Percentile Only Prioritized Waterbodies	Vulnerability Status (within prioritized waterbodies only)
32	Westfield	MA32-60	Stage Brook	Headwaters, confluence of Freeland Brook and Wigwam Brook, Russell to mouth at confluence with Black Brook (forming headwaters Bradley Brook), Russell.	1	B (CWF)	010802060301	Moose Meadow Brook-Westfield River	51.81	6.38	53.09	66.18	28	Hampden County-MA	7.7	9.9	74.63	0.21	0.80	High
32	Westfield	MA32-21	Bradley Brook	Headwaters, confluence Black and Stage brooks, Russell to mouth at confluence with Westfield River, Russell.	0.7	B	010802060301	Moose Meadow Brook-Westfield River	51.81	6.38	53.09	66.18	28	Hampden County-MA	7.7	9.9	74.63	0.21	0.80	High
32	Westfield	MA32-05	Westfield River	Confluence with Middle Branch Westfield River, Huntington to Route 20 bridge, Westfield.	17.7	B (WWF)	010802060301	Moose Meadow Brook-Westfield River	51.81	6.38	53.09	66.18	28	Hampden County-MA	7.7	9.9	74.63	0.21	0.80	High
32	Westfield	MA32-40	Moose Meadow Brook	Headwaters, west of Bungay Mountain, east of New State Road, Montgomery to inlet Westfield Reservoir, Montgomery (formerly part of segment MA32-23).	2.9	B	010802060301	Moose Meadow Brook-Westfield River	51.81	6.38	53.09	66.18	28	Hampden County-MA	7.7	9.9	74.63	0.21	0.80	High
32	Westfield	MA32-55	Kellog Brook	Headwaters (perennial portion), east of College Highway (Route 202), Southwick to mouth at confluence with Great Brook, Westfield.	2.8	B (CWF)	010802060304	Great Brook	61.49	15.53	47.71	64.55	41	Hampden County-MA	3.2	37.4	48.78	0.35	0.99	High
32	Westfield	MA32-25	Great Brook	Source, outlet Congamond Lakes, Southwick to mouth at confluence with Westfield River, Westfield.	10.8	B	010802060304	Great Brook	61.49	15.53	47.71	64.55	41	Hampden County-MA	3.2	37.4	48.78	0.35	0.99	High
32	Westfield	MA32-12	Swift River	Headwaters, west of Plainfield Road, Hawley to mouth at confluence with Westfield River at village of Swift River, Cummington.	11.3	B (CWF)	010802060102	Swift River	49.51	5.58	48.5	64.14	42	Franklin County-MA	5.0	0.0	98.54	0.08	0.33	Medium
32	Westfield	MA32-48	Stones Brook	Headwaters, outlet small unnamed pond north of Dyers Road, Ashfield to mouth at confluence with Swift River, Goshen.	4.7	B (CWF)	010802060102	Swift River	49.51	5.58	48.5	64.14	42	Franklin County-MA	5.0	0.0	98.54	0.08	0.33	Medium

* 3 or more freshwater mussel species (Carmignani 2020)

Nonpoint Source Management Section – HEALTHY WATERS

Basin ID	Basin Name	Segment ID	Waterbody Name	Description	Size (miles)	Class (Qualifiers)	HUC12 Number	HUC12 Name	Ecological Index	Stressor Index	Social Index	RPI Score	RPI Rank	Majority County	Slope_Mean_Value_in_HUC12_Watershed	Perc_MS4_in_HUC12_Watershed	PHWA_HEALTH_NDX_PCT_2016	PHWA_VULN_NDX_ST_2016	Vulnerability Percentile Only Prioritized Waterbodies	Vulnerability Status (within prioritized waterbodies only)
32	Westfield	MA32-54	North Branch Swift River	Headwaters, outlet small unnamed pond west of Grant Street, Plainfield to mouth at confluence with Swift River, Cummington.	6.9	B (CWF)	010802060102	Swift River	49.51	5.58	48.5	64.14	42	Franklin County-MA	5.0	0.0	98.54	0.08	0.33	Medium
33	Deerfield	MA33-06	North River	From confluence of East and West branches of the North River, Colrain to confluence with Deerfield River, Shelburne/Charlemont. (Segment changed 1997 - East Branch no longer included in length) (HQW applies upstream of Barnhardt discharge (NPDES# MA0003697)).	3.3	B (CWF, HQW*)	010802030302	Taylor Brook-North River	76.22	6.72	61.18	76.89	1	Franklin County-MA	9.0	0.0	97.56	0.08	0.12	Low
33	Deerfield	MA33-27	West Branch North River	Headwaters, confluence of West Branch Brook and Burrington Brook, Heath to confluence with East Branch North River, forming headwaters North River, Colrain.	7.2	B (CWF, HQW)	010802030302	Taylor Brook-North River	76.22	6.72	61.18	76.89	1	Franklin County-MA	9.0	0.0	97.56	0.08	0.12	Low
33	Deerfield	MA33-90	West Branch Brook	Headwaters, Vermont-Massachusetts stateline, Heath to confluence with Burrington Brook (forming headwaters West Branch North River), Heath.	5.4	B (CWF)	010802030302	Taylor Brook-North River	76.22	6.72	61.18	76.89	1	Franklin County-MA	9.0	0.0	97.56	0.08	0.12	Low
33	Deerfield	MA33-124	Kinsman Brook	Headwaters north of Colrain Stage Road, Heath to confluence with Davenport Brook forming headwaters Taylor Brook, Heath.	1.8	B (CWF)	010802030302	Taylor Brook-North River	76.22	6.72	61.18	76.89	1	Franklin County-MA	9.0	0.0	97.56	0.08	0.12	Low
33	Deerfield	MA33-40	Burrington Brook	Headwaters, east of Sadoga Road, Heath to confluence with West Branch Brook (forming headwaters West Branch North River), Heath.	2	B	010802030302	Taylor Brook-North River	76.22	6.72	61.18	76.89	1	Franklin County-MA	9.0	0.0	97.56	0.08	0.12	Low

* 3 or more freshwater mussel species (Carmignani 2020)

Nonpoint Source Management Section – HEALTHY WATERS

Basin ID	Basin Name	Segment ID	Waterbody Name	Description	Size (miles)	Class (Qualifiers)	HUC12 Number	HUC12 Name	Ecological Index	Stressor Index	Social Index	RPI Score	RPI Rank	Majority County	Slope_Mean_Value_in_HUC12_Watershed	Perc_MS4_in_HUC12_Watershed	PHWA_HEALTH_NDX_PCT_2016	PHWA_VULN_NDX_ST_2016	Vulnerability Percentile Only Prioritized Waterbodies	Vulnerability Status (within prioritized waterbodies only)
33	Deerfield	MA33-41	Burton Brook	Vermont-Massachusetts stateline, Rowe to confluence with West Branch Brook, Heath.	1.3	B	010802030302	Taylor Brook-North River	76.22	6.72	61.18	76.89	1	Franklin County-MA	9.0	0.0	97.56	0.08	0.12	Low
33	Deerfield	MA33-42	Cary Brook	Perennial portion north of East Catamount Hill Road, Colrain to confluence with West Branch North River, Colrain.	0.5	B	010802030302	Taylor Brook-North River	76.22	6.72	61.18	76.89	1	Franklin County-MA	9.0	0.0	97.56	0.08	0.12	Low
33	Deerfield	MA33-51	Fox Brook	From the outlet of Fox Brook Upper Reservoir, Colrain to confluence with North River, Colrain.	0.8	B	010802030302	Taylor Brook-North River	76.22	6.72	61.18	76.89	1	Franklin County-MA	9.0	0.0	97.56	0.08	0.12	Low
33	Deerfield	MA33-77	Roberts Brook	Headwaters, east of Hosmer Road, Heath to confluence with West Branch North River, Colrain.	1	B	010802030302	Taylor Brook-North River	76.22	6.72	61.18	76.89	1	Franklin County-MA	9.0	0.0	97.56	0.08	0.12	Low
33	Deerfield	MA33-89	Vincent Brook	Headwaters, perennial portion east of Stetson Brothers Road, Colrain to confluence with West Branch North River, Colrain.	1	B	010802030302	Taylor Brook-North River	76.22	6.72	61.18	76.89	1	Franklin County-MA	9.0	0.0	97.56	0.08	0.12	Low
33	Deerfield	MA33-80	Sanders Brook	Vermont/Massachusetts border, Heath to confluence with West Branch North River, Colrain.	2.8	B	010802030302	Taylor Brook-North River	76.22	6.72	61.18	76.89	1	Franklin County-MA	9.0	0.0	97.56	0.08	0.12	Low
33	Deerfield	MA33-24	Tissdell Brook	Headwaters perennial portion east of Christian Hill Cemetary, Colrain to confluence with West Branch North River, Colrain.	1.7	B	010802030302	Taylor Brook-North River	76.22	6.72	61.18	76.89	1	Franklin County-MA	9.0	0.0	97.56	0.08	0.12	Low
33	Deerfield	MA33-31	Taylor Brook	From the confluence of Kinsman Brook and Davenport Brook, Heath to confluence with West Branch North River, Colrain.	2.6	B	010802030302	Taylor Brook-North River	76.22	6.72	61.18	76.89	1	Franklin County-MA	9.0	0.0	97.56	0.08	0.12	Low
33	Deerfield	MA33-111	Davenport Brook	Headwaters outlet Papoose Lake, Heath to confluence with Kinsman Brook forming headwaters Taylor Brook, Heath.	0.9	B	010802030302	Taylor Brook-North River	76.22	6.72	61.18	76.89	1	Franklin County-MA	9.0	0.0	97.56	0.08	0.12	Low

* 3 or more freshwater mussel species (Carmignani 2020)

Nonpoint Source Management Section – HEALTHY WATERS

Basin ID	Basin Name	Segment ID	Waterbody Name	Description	Size (miles)	Class (Qualifiers)	HUC12 Number	HUC12 Name	Ecological Index	Stressor Index	Social Index	RPI Score	RPI Rank	Majority County	Slope_Mean_Value_in_HUC12_Watershed	Perc_MS4_in_HUC12_Watershed	PHWA_HEALTH_NDX_PCT_2016	PHWA_VULN_NDX_ST_2016	Vulnerability Percentile Only Prioritized Waterbodies	Vulnerability Status (within prioritized waterbodies only)
33	Deerfield	MA33-120	Dickenson Brook	Headwaters west of Sumner Stetson Road, Heath to confluence with West Branch Brook, Heath.	0.7	B	010802030302	Taylor Brook-North River	76.22	6.72	61.18	76.89	1	Franklin County-MA	9.0	0.0	97.56	0.08	0.12	Low
33	Deerfield	MA33-110	Unnamed Tributary	Unnamed tributary to Taylor Brook, headwaters, Catamount State Forest, Colrain to confluence Taylor Brook, Colrain.	1.5	B	010802030302	Taylor Brook-North River	76.22	6.72	61.18	76.89	1	Franklin County-MA	9.0	0.0	97.56	0.08	0.12	Low
33	Deerfield	MA33-109	Unnamed Tributary	Unnamed tributary to West Branch North River, headwaters west of Wilson Hill Road, Colrain to confluence with West Branch North River, Colrain.	1.4	B	010802030302	Taylor Brook-North River	76.22	6.72	61.18	76.89	1	Franklin County-MA	9.0	0.0	97.56	0.08	0.12	Low
33	Deerfield	MA33-130	Meadow Brook	Headwaters, outlet McLeod Pond, Colrain to mouth at confluence with North River, Colrain.	1.2	B	010802030302	Taylor Brook-North River	76.22	6.72	61.18	76.89	1	Franklin County-MA	9.0	0.0	97.56	0.08	0.12	Low
33	Deerfield	MA33-131	Johnson Brook	Headwaters, west of Route 112 (Main Road) and northeast at Houghton Hill, Colrain to the mouth at confluence with North River, Colrain.	1.4	B	010802030302	Taylor Brook-North River	76.22	6.72	61.18	76.89	1	Franklin County-MA	9.0	0.0	97.56	0.08	0.12	Low
33	Deerfield	MA33-37	Black Brook	Headwaters, west of Chapel Road, Savoy to confluence with Cold River, Savoy.	3.3	B (CWF)	010802030202	Cold River	76.36	2.8	50.23	74.6	2	Berkshire County-MA	9.8	0.0	NA	0.08	0.12	Low
33	Deerfield	MA33-86	Tannery Brook	Outlet of Tannery Pond, Savoy to confluence with Gulf Brook, Savoy.	0.7	B (CWF)	010802030202	Cold River	76.36	2.8	50.23	74.6	2	Berkshire County-MA	9.8	0.0	NA	0.08	0.12	Low
33	Deerfield	MA33-05	Cold River	Source in Florida to confluence with Deerfield River, Charlemont.	13.7	B (CWF)	010802030202	Cold River	76.36	2.8	50.23	74.6	2	Berkshire County-MA	9.8	0.0	NA	0.08	0.12	Low
33	Deerfield	MA33-55	Green River	Headwaters, perennial portion in Florida State Forest west of Blackstone Road, Florida to confluence with Cold River, Florida.	1.3	B	010802030202	Cold River	76.36	2.8	50.23	74.6	2	Berkshire County-MA	9.8	0.0	NA	0.08	0.12	Low

* 3 or more freshwater mussel species (Carmignani 2020)

Nonpoint Source Management Section – HEALTHY WATERS

Basin ID	Basin Name	Segment ID	Waterbody Name	Description	Size (miles)	Class (Qualifiers)	HUC12 Number	HUC12 Name	Ecological Index	Stressor Index	Social Index	RPI Score	RPI Rank	Majority County	Slope_Mean_Value_in_HUC12_Watershed	Perc_MS4_in_HUC12_Watershed	PHWA_HEAL_TH_NDX_ST_PCT_2016	PHWA_VULN_NDX_ST_2016	Vulnerability Percentile Only Prioritized Waterbodies	Vulnerability Status (within prioritized waterbodies only)
33	Deerfield	MA33-78	Ross Brook	Headwaters, south of Tannery Road, Savoy to confluence with Tannery Brook, Savoy.	2	B	010802030202	Cold River	76.36	2.8	50.23	74.6	2	Berkshire County-MA	9.8	0.0	NA	0.08	0.12	Low
33	Deerfield	MA33-87	Tower Brook	Headwaters, west of Central Shaft Road, Florida (drains wetland) to confluence with Cold River, Florida.	1.9	B	010802030202	Cold River	76.36	2.8	50.23	74.6	2	Berkshire County-MA	9.8	0.0	NA	0.08	0.12	Low
33	Deerfield	MA33-56	Gulf Brook	Outlet of Burnett Pond, Savoy to confluence with Cold River, Savoy.	3.5	B	010802030202	Cold River	76.36	2.8	50.23	74.6	2	Berkshire County-MA	9.8	0.0	NA	0.08	0.12	Low
33	Deerfield	MA33-66	Manning Brook	Headwaters, north of South County Road, Florida to confluence with Cold River, Florida.	1.4	B	010802030202	Cold River	76.36	2.8	50.23	74.6	2	Berkshire County-MA	9.8	0.0	NA	0.08	0.12	Low
33	Deerfield	MA33-88	Trout Brook	Headwaters, perennial portion west of Hawks Mountain, Charlemont/Hawley to confluence with Cold River, Charlemont.	0.6	B	010802030202	Cold River	76.36	2.8	50.23	74.6	2	Berkshire County-MA	9.8	0.0	NA	0.08	0.12	Low
33	Deerfield	MA33-121	Staples Brook	Headwaters east of Spruce Hill, North Adams to confluence Tower Brook, Florida.	1.4	B	010802030202	Cold River	76.36	2.8	50.23	74.6	2	Berkshire County-MA	9.8	0.0	NA	0.08	0.12	Low
33	Deerfield	MA33-122	White Brook	Headwaters east of Olson Road, Florida to confluence with the Cold River, Florida.	1.6	B	010802030202	Cold River	76.36	2.8	50.23	74.6	2	Berkshire County-MA	9.8	0.0	NA	0.08	0.12	Low
33	Deerfield	MA33-73	Phelps Brook	Perennial portion, north of Main Road, Monroe to inlet of Phelps Brook Reservoir, Monroe.	1.2	A (PWS, ORW)	010802030201	Pelham Brook-Deerfield River	78.67	3.11	47.47	74.34	4	Franklin County-MA	11.8	0.0	96.59	0.06	0.00	Low
33	Deerfield	MA33-50	Fife Brook	Headwaters, perennial portion southwest of Spruce Mountain in the Monroe State Forest, Monroe to confluence with Deerfield River, Florida.	2.6	B (CWF)	010802030201	Pelham Brook-Deerfield River	78.67	3.11	47.47	74.34	4	Franklin County-MA	11.8	0.0	96.59	0.06	0.00	Low

* 3 or more freshwater mussel species (Carmignani 2020)

Nonpoint Source Management Section – HEALTHY WATERS

Basin ID	Basin Name	Segment ID	Waterbody Name	Description	Size (miles)	Class (Qualifiers)	HUC12 Number	HUC12 Name	Ecological Index	Stressor Index	Social Index	RPI Score	RPI Rank	Majority County	Slope_Mean_Value_in_HUC12_Watershed	Perc_MS4_in_HUC12_Watershed	PHWA_HEALTH_NDX_PCT_2016	PHWA_VULN_NDX_ST_2016	Vulnerability Percentile Only Prioritized Waterbodies	Vulnerability Status (within prioritized waterbodies only)
33	Deerfield	MA33-91	Whitcomb Brook	Headwaters, perennial portion east of Whitcomb Hill Road, Florida to confluence with Deerfield River, Florida.	0.6	B (CWF)	010802030201	Pelham Brook-Deerfield River	78.67	3.11	47.47	74.34	4	Franklin County-MA	11.8	0.0	96.59	0.06	0.00	Low
33	Deerfield	MA33-48	Dunbar Brook	Vermont-Massachusetts stateline, Monroe to confluence with Deerfield River, Monroe.	5.6	B (CWF)	010802030201	Pelham Brook-Deerfield River	78.67	3.11	47.47	74.34	4	Franklin County-MA	11.8	0.0	96.59	0.06	0.00	Low
33	Deerfield	MA33-01	Deerfield River	Outlet Sherman Reservoir Monroe/Rowe, to confluence with Cold River, Charlemont (through former segment, Lower Reservoir MA33028).	13.1	B (CWF)	010802030201	Pelham Brook-Deerfield River	78.67	3.11	47.47	74.34	4	Franklin County-MA	11.8	0.0	96.59	0.06	0.00	Low
33	Deerfield	MA33-12	Pelham Brook	Headwaters outlet Pelham Lake, Rowe to confluence with Deerfield River, Charlemont.	4.8	B (CWF)	010802030201	Pelham Brook-Deerfield River	78.67	3.11	47.47	74.34	4	Franklin County-MA	11.8	0.0	96.59	0.06	0.00	Low
33	Deerfield	MA33-127	Todd Brook	Headwaters east of Coon Hill, Charlemont to confluence with Deerfield River, Charlemont.	1.2	B (CWF)	010802030201	Pelham Brook-Deerfield River	78.67	3.11	47.47	74.34	4	Franklin County-MA	11.8	0.0	96.59	0.06	0.00	Low
33	Deerfield	MA33-128	Unnamed Tributary	Unnamed tributary to Deerfield River known as 'Bear Swamp Outflow', from headwaters north of Tunnel Road, Rowe to confluence with Deerfield River, Rowe.	1.3	B (CWF)	010802030201	Pelham Brook-Deerfield River	78.67	3.11	47.47	74.34	4	Franklin County-MA	11.8	0.0	96.59	0.06	0.00	Low
33	Deerfield	MA33-53	Granger Brook	Headwaters, west of Bliss Road, Florida to confluence with Dunbar Brook, Monroe.	1.2	B	010802030201	Pelham Brook-Deerfield River	78.67	3.11	47.47	74.34	4	Franklin County-MA	11.8	0.0	96.59	0.06	0.00	Low
33	Deerfield	MA33-43	Cascade Brook	Headwaters, perennial portion southeast of Moore Road, Florida to confluence with Deerfield River, Florida.	1.8	B	010802030201	Pelham Brook-Deerfield River	78.67	3.11	47.47	74.34	4	Franklin County-MA	11.8	0.0	96.59	0.06	0.00	Low
33	Deerfield	MA33-57	Haley Brook	Headwaters north of Main Street, Monroe to confluence with Dunbar Brook, Monroe.	1.5	B	010802030201	Pelham Brook-Deerfield River	78.67	3.11	47.47	74.34	4	Franklin County-MA	11.8	0.0	96.59	0.06	0.00	Low

* 3 or more freshwater mussel species (Carmignani 2020)

Nonpoint Source Management Section – HEALTHY WATERS

Basin ID	Basin Name	Segment ID	Waterbody Name	Description	Size (miles)	Class (Qualifiers)	HUC12 Number	HUC12 Name	Ecological Index	Stressor Index	Social Index	RPI Score	RPI Rank	Majority County	Slope_Mean_Value_in_HUC12_Watershed	Perc_MS4_in_HUC12_Watershed	PHWA_HEALTH_NDX_PCT_2016	PHWA_VULN_NDX_ST_2016	Vulnerability Percentile Only Prioritized Waterbodies	Vulnerability Status (within prioritized waterbodies only)
33	Deerfield	MA33-85	Steele Brook	Headwaters, perennial portion north of Tunnel Road, Rowe to confluence with Pelham Brook, Rowe.	1.7	B	010802030201	Pelham Brook-Deerfield River	78.67	3.11	47.47	74.34	4	Franklin County-MA	11.8	0.0	96.59	0.06	0.00	Low
33	Deerfield	MA33-76	Rice Brook	Headwaters, north of Hazelton Road, Rowe to confluence with Pelham Brook, Rowe.	1.2	B	010802030201	Pelham Brook-Deerfield River	78.67	3.11	47.47	74.34	4	Franklin County-MA	11.8	0.0	96.59	0.06	0.00	Low
33	Deerfield	MA33-123	Parsonage Brook	Headwaters north of Main Road, Monroe to confluence with Dunbar Brook, Monroe.	1.5	B	010802030201	Pelham Brook-Deerfield River	78.67	3.11	47.47	74.34	4	Franklin County-MA	11.8	0.0	96.59	0.06	0.00	Low
33	Deerfield	MA33-129	Tuttle Brook	Headwaters east of Leshures Road, Rowe to mouth at confluence with Potter Brook, Rowe.	2	B	010802030201	Pelham Brook-Deerfield River	78.67	3.11	47.47	74.34	4	Franklin County-MA	11.8	0.0	96.59	0.06	0.00	Low
33	Deerfield	MA33-06	North River	From confluence of East and West branches of the North River, Colrain to confluence with Deerfield River, Shelburne/Charlemont. (Segment changed 1997 - East Branch no longer included in length) (HQW applies upstream of Barnhardt discharge (NPDES# MA0003697)).	3.3	B (CWF, HQW*)	010802030205	Mill Brook-Deerfield River	76.22	5.73	52.38	74.29	5	Franklin County-MA	10.4	0.0	92.20	0.08	0.25	Low
33	Deerfield	MA33-35	Avery Brook	Headwaters, perennial portion south of Colrain Brook Road, Heath to confluence with Deerfield River, Charlemont.	3.7	B (CWF)	010802030205	Mill Brook-Deerfield River	76.22	5.73	52.38	74.29	5	Franklin County-MA	10.4	0.0	92.20	0.08	0.25	Low
33	Deerfield	MA33-67	Maxwell Brook	Headwaters, located north of Tatro Road, Rowe to confluence with Mill Brook, Charlemont.	3.2	B (CWF)	010802030205	Mill Brook-Deerfield River	76.22	5.73	52.38	74.29	5	Franklin County-MA	10.4	0.0	92.20	0.08	0.25	Low
33	Deerfield	MA33-93	Willis Brook	Headwaters, perennial portion south of South Road, Heath to confluence with Hartwell Brook, Charlemont.	1.6	B (CWF)	010802030205	Mill Brook-Deerfield River	76.22	5.73	52.38	74.29	5	Franklin County-MA	10.4	0.0	92.20	0.08	0.25	Low

* 3 or more freshwater mussel species (Carmignani 2020)

Nonpoint Source Management Section – HEALTHY WATERS

Basin ID	Basin Name	Segment ID	Waterbody Name	Description	Size (miles)	Class (Qualifiers)	HUC12 Number	HUC12 Name	Ecological Index	Stressor Index	Social Index	RPI Score	RPI Rank	Majority County	Slope_Mean_Value_in_HUC12_Watershed	Perc_MS4_in_HUC12_Watershed	PHWA_HEALTH_NDX_PCT_2016	PHWA_VULN_NDX_ST_2016	Vulnerability Percentile Only Prioritized Waterbodies	Vulnerability Status (within prioritized waterbodies only)
33	Deerfield	MA33-92	Wilder Brook	Headwaters, east of Flagg Hill Road, Heath to confluence with Deerfield River, Charlemont.	2.9	B (CWF)	010802030205	Mill Brook-Deerfield River	76.22	5.73	52.38	74.29	5	Franklin County-MA	10.4	0.0	92.20	0.08	0.25	Low
33	Deerfield	MA33-33	Albee Brook	Headwaters, north of Dodge Corner Road, Hawley to confluence with Deerfield River, Charlemont.	1	B (CWF)	010802030205	Mill Brook-Deerfield River	76.22	5.73	52.38	74.29	5	Franklin County-MA	10.4	0.0	92.20	0.08	0.25	Low
33	Deerfield	MA33-01	Deerfield River	Outlet Sherman Reservoir Monroe/Rowe, to confluence with Cold River, Charlemont (through former segment, Lower Reservoir MA33028).	13.1	B (CWF)	010802030205	Mill Brook-Deerfield River	76.22	5.73	52.38	74.29	5	Franklin County-MA	10.4	0.0	92.20	0.08	0.25	Low
33	Deerfield	MA33-02	Deerfield River	Confluence with Cold River, Charlemont to confluence with North River, Charlemont/Shelburne.	11.4	B (CWF)	010802030205	Mill Brook-Deerfield River	76.22	5.73	52.38	74.29	5	Franklin County-MA	10.4	0.0	92.20	0.08	0.25	Low
33	Deerfield	MA33-05	Cold River	Source in Florida to confluence with Deerfield River, Charlemont.	13.7	B (CWF)	010802030205	Mill Brook-Deerfield River	76.22	5.73	52.38	74.29	5	Franklin County-MA	10.4	0.0	92.20	0.08	0.25	Low
33	Deerfield	MA33-11	Chickley River	Headwaters Savoy Mountain State Forest, Savoy to confluence with Deerfield River, Charlemont.	11.1	B (CWF)	010802030205	Mill Brook-Deerfield River	76.22	5.73	52.38	74.29	5	Franklin County-MA	10.4	0.0	92.20	0.08	0.25	Low
33	Deerfield	MA33-13	Bozrah Brook	Headwaters, located west of East Hawley Road, Hawley (drains wetland) to confluence with Deerfield River, Charlemont.	3	B (CWF)	010802030205	Mill Brook-Deerfield River	76.22	5.73	52.38	74.29	5	Franklin County-MA	10.4	0.0	92.20	0.08	0.25	Low
33	Deerfield	MA33-14	Mill Brook	Headwaters, originating north of Rowe Road, Heath to confluence with the Deerfield River, Charlemont.	5.7	B (CWF)	010802030205	Mill Brook-Deerfield River	76.22	5.73	52.38	74.29	5	Franklin County-MA	10.4	0.0	92.20	0.08	0.25	Low
33	Deerfield	MA33-125	Rice Brook	Perennial portion east of Legate Hill Road, Charlemont to confluence with Deerfield River, Charlemont.	3.1	B (CWF)	010802030205	Mill Brook-Deerfield River	76.22	5.73	52.38	74.29	5	Franklin County-MA	10.4	0.0	92.20	0.08	0.25	Low

* 3 or more freshwater mussel species (Carmignani 2020)

Nonpoint Source Management Section – HEALTHY WATERS

Basin ID	Basin Name	Segment ID	Waterbody Name	Description	Size (miles)	Class (Qualifiers)	HUC12 Number	HUC12 Name	Ecological Index	Stressor Index	Social Index	RPI Score	RPI Rank	Majority County	Slope_Mean_Value_in_HUC12_Watershed	Perc_MS4_in_HUC12_Watershed	PHWA_HEALTH_NDX_PCT_2016	PHWA_VULN_NDX_ST_2016	Vulnerability Percentile Only Prioritized Waterbodies	Vulnerability Status (within prioritized waterbodies only)
33	Deerfield	MA33-65	Legate Hill Brook	Headwaters, perennial portion north of Blueberry Peak, Charlemont to confluence with Deerfield River, Charlemont.	3.4	B	010802030205	Mill Brook-Deerfield River	76.22	5.73	52.38	74.29	5	Franklin County-MA	10.4	0.0	92.20	0.08	0.25	Low
33	Deerfield	MA33-58	Hartwell Brook	Headwaters, south of South Heath Road, Charlemont to confluence with Deerfield River, Charlemont.	2.1	B	010802030205	Mill Brook-Deerfield River	76.22	5.73	52.38	74.29	5	Franklin County-MA	10.4	0.0	92.20	0.08	0.25	Low
33	Deerfield	MA33-59	Heath Brook	Headwaters, south of West Main Street, Heath to confluence with Mill Brook, Heath.	1	B	010802030205	Mill Brook-Deerfield River	76.22	5.73	52.38	74.29	5	Franklin County-MA	10.4	0.0	92.20	0.08	0.25	Low
33	Deerfield	MA33-72	East Oxbow Brook	Headwaters, perennial portion east of Deer Run Lane, Charlemont to confluence with Deerfield River, Charlemont.	1.4	B	010802030205	Mill Brook-Deerfield River	76.22	5.73	52.38	74.29	5	Franklin County-MA	10.4	0.0	92.20	0.08	0.25	Low
33	Deerfield	MA33-15	Clesson Brook	Outlet of unnamed pond south of Forget Road, Hawley through Cox Pond to confluence with Deerfield River, Buckland.	10.3	B	010802030205	Mill Brook-Deerfield River	76.22	5.73	52.38	74.29	5	Franklin County-MA	10.4	0.0	92.20	0.08	0.25	Low
33	Deerfield	MA33-69	Mill Brook	Headwaters, outlet Beaver Pond, Hawley to confluence with Chickley River, Hawley.	4.1	B (CWF)	010802030203	Chickley River	77.15	3.67	48.61	74.03	6	Franklin County-MA	10.2	0.0	80.98	0.09	0.38	Medium
33	Deerfield	MA33-11	Chickley River	Headwaters Savoy Mountain State Forest, Savoy to confluence with Deerfield River, Charlemont.	11.1	B (CWF)	010802030203	Chickley River	77.15	3.67	48.61	74.03	6	Franklin County-MA	10.2	0.0	80.98	0.09	0.38	Medium
33	Deerfield	MA33-126	North Brook	Perennial portion north of Harwood Road, Hawley to confluence with Chickley River, Hawley.	1.2	B (CWF)	010802030203	Chickley River	77.15	3.67	48.61	74.03	6	Franklin County-MA	10.2	0.0	80.98	0.09	0.38	Medium
33	Deerfield	MA33-36	Basin Brook	Headwaters, Kenneth M. Dubuque Memorial State Forest, Hawley to confluence with King Brook, Hawley.	2.2	B	010802030203	Chickley River	77.15	3.67	48.61	74.03	6	Franklin County-MA	10.2	0.0	80.98	0.09	0.38	Medium

* 3 or more freshwater mussel species (Carmignani 2020)

Nonpoint Source Management Section – HEALTHY WATERS

Basin ID	Basin Name	Segment ID	Waterbody Name	Description	Size (miles)	Class (Qualifiers)	HUC12 Number	HUC12 Name	Ecological Index	Stressor Index	Social Index	RPI Score	RPI Rank	Majority County	Slope_Mean_Value_in_HUC12_Watershed	Perc_MS4_in_HUC12_Watershed	PHWA_HEAL_TH_NDX_ST_PCT_2016	PHWA_VULN_NDX_ST_2016	Vulnerability Percentile Only Prioritized Waterbodies	Vulnerability Status (within prioritized waterbodies only)
33	Deerfield	MA33-39	Brown Brook	Headwaters, perennial portion east of Scott Road, Savoy to confluence with Chickley River, Savoy.	0.4	B	010802030203	Chickley River	77.15	3.67	48.61	74.03	6	Franklin County-MA	10.2	0.0	80.98	0.09	0.38	Medium
33	Deerfield	MA33-62	Horsefords Brook	Headwaters, west of Bannis Road, Savoy to confluence with Chickley River, Savoy.	1.9	B	010802030203	Chickley River	77.15	3.67	48.61	74.03	6	Franklin County-MA	10.2	0.0	80.98	0.09	0.38	Medium
33	Deerfield	MA33-64	King Brook	Outlet Hallockville Pond, Hawley to confluence with Chickley River, Hawley.	2.1	B	010802030203	Chickley River	77.15	3.67	48.61	74.03	6	Franklin County-MA	10.2	0.0	80.98	0.09	0.38	Medium
33	Deerfield	MA33-75	Potash Brook	Headwaters, Cranberry Swamp, Hawley (drains wetland) to confluence with Mill Brook, Hawley.	1.4	B	010802030203	Chickley River	77.15	3.67	48.61	74.03	6	Franklin County-MA	10.2	0.0	80.98	0.09	0.38	Medium
33	Deerfield	MA33-118	Fuller Brook	Perennial portion in Debuque State Forest, Hawley to confluence with Chickley River, Hawley.	0.9	B	010802030203	Chickley River	77.15	3.67	48.61	74.03	6	Franklin County-MA	10.2	0.0	80.98	0.09	0.38	Medium
33	Deerfield	MA33-119	Tilton Brook	Headwaters in Savoy Mountain State Forest, west of Bannis Road, Savoy to confluence with Chickley River, Savoy.	2	B	010802030203	Chickley River	77.15	3.67	48.61	74.03	6	Franklin County-MA	10.2	0.0	80.98	0.09	0.38	Medium
33	Deerfield	MA33-44	Chapel Brook	Outlet of unnamed pond, Ashfield to confluence with Poland Brook, Conway.	3.4	B (CWF)	010802030501	South River	53.63	7.44	52.23	66.14	29	Franklin County-MA	8.6	0.0	73.17	0.09	0.34	Medium
33	Deerfield	MA33-74	Poland Brook	Confluence with Chapel Brook, Conway to confluence with South River, Conway.	2.6	B (CWF)	010802030501	South River	53.63	7.44	52.23	66.14	29	Franklin County-MA	8.6	0.0	73.17	0.09	0.34	Medium
33	Deerfield	MA33-46	Creamery Brook	Headwaters, perennial portion west of Steady Line Road, Ashfield to confluence with South River, Ashfield.	2.4	B (CWF)	010802030501	South River	53.63	7.44	52.23	66.14	29	Franklin County-MA	8.6	0.0	73.17	0.09	0.34	Medium
33	Deerfield	MA33-63	Johnny Bean Brook	Headwaters, Poland Brook State Wildlife Management Area, Conway to confluence with South River, Conway.	1.7	B	010802030501	South River	53.63	7.44	52.23	66.14	29	Franklin County-MA	8.6	0.0	73.17	0.09	0.34	Medium

* 3 or more freshwater mussel species (Carmignani 2020)

Nonpoint Source Management Section – HEALTHY WATERS

Basin ID	Basin Name	Segment ID	Waterbody Name	Description	Size (miles)	Class (Qualifiers)	HUC12 Number	HUC12 Name	Ecological Index	Stressor Index	Social Index	RPI Score	RPI Rank	Majority County	Slope_Mean_Value_in_HUC12_Watershed	Perc_MS4_in_HUC12_Watershed	PHWA_HEAL_TH_NDX_ST_PCT_2016	PHWA_VULN_NDX_ST_2016	Vulnerability Percentile Only Prioritized Waterbodies	Vulnerability Status (within prioritized waterbodies only)
33	Deerfield	MA33-71	Nye Brook	Headwaters, perennial portion north of Guinea Gulf (Conway State Forest), Conway to confluence with Poland Brook, Conway.	0.7	B	010802030501	South River	53.63	7.44	52.23	66.14	29	Franklin County-MA	8.6	0.0	73.17	0.09	0.34	Medium
33	Deerfield	MA33-32	Pumpkin Hollow Brook	Headwaters north of Conway State Forest and south of Old Cricket Hill Road, Conway to confluence with South River, Conway.	2.3	B	010802030501	South River	53.63	7.44	52.23	66.14	29	Franklin County-MA	8.6	0.0	73.17	0.09	0.34	Medium
33	Deerfield	MA33-115	Unnamed Tributary	Unnamed tributary to Chapel Brook, headwaters west of Bird Hill Road, Ashfield to confluence with Chapel Brook, Ashfield.	1.5	B	010802030501	South River	53.63	7.44	52.23	66.14	29	Franklin County-MA	8.6	0.0	73.17	0.09	0.34	Medium
33	Deerfield	MA33-114	Unnamed Tributary	Headwaters east of Pine Hill Road, Conway to confluence with South River, Conway.	1	B	010802030501	South River	53.63	7.44	52.23	66.14	29	Franklin County-MA	8.6	0.0	73.17	0.09	0.34	Medium
33	Deerfield	MA33-23	Drakes Brook	Headwaters, (perennial portion) west of North Warger Road, Ashfield to confluence with Bear River, Conway.	2.3	B (CWF)	010802030502	Bear River-Deerfield River	50.28	9.57	57.28	66	30	Franklin County-MA	8.2	0.0	83.90	0.10	0.42	Medium
33	Deerfield	MA33-112	Hawkes Brook	Headwaters east of Zerah Fiske Road, Shelburne to confluence with Dragon Brook, Shelburne.	1.2	B (CWF)	010802030502	Bear River-Deerfield River	50.28	9.57	57.28	66	30	Franklin County-MA	8.2	0.0	83.90	0.10	0.42	Medium
33	Deerfield	MA33-54	Great Brook	Headwaters, perennial portion west at Zerah Fiske Road, Shelburne to confluence with Hawkes Brook, Shelburne.	1.2	B	010802030502	Bear River-Deerfield River	50.28	9.57	57.28	66	30	Franklin County-MA	8.2	0.0	83.90	0.10	0.42	Medium
33	Deerfield	MA33-82	Sids Brook	Headwaters, perennial portion north of Baptist Corner Road, Ashfield to confluence with Drakes Brook, Conway.	1.7	B	010802030502	Bear River-Deerfield River	50.28	9.57	57.28	66	30	Franklin County-MA	8.2	0.0	83.90	0.10	0.42	Medium
33	Deerfield	MA33-83	Sluice Brook	Headwaters, north of Tower Road, Shelburne to confluence with Deerfield River, Shelburne.	3.3	B	010802030502	Bear River-Deerfield River	50.28	9.57	57.28	66	30	Franklin County-MA	8.2	0.0	83.90	0.10	0.42	Medium

* 3 or more freshwater mussel species (Carmignani 2020)

Nonpoint Source Management Section – HEALTHY WATERS

Basin ID	Basin Name	Segment ID	Waterbody Name	Description	Size (miles)	Class (Qualifiers)	HUC12 Number	HUC12 Name	Ecological Index	Stressor Index	Social Index	RPI Score	RPI Rank	Majority County	Slope_Mean_Value_in_HUC12_Watershed	Perc_MS4_in_HUC12_Watershed	PHWA_HEALTH_NDX_PCT_2016	PHWA_VULN_NDX_ST_2016	Vulnerability Percentile Only Prioritized Waterbodies	Vulnerability Status (within prioritized waterbodies only)
33	Deerfield	MA33-81	Sheldon Brook	Headwaters, south of Old Albany Road, Shelburne to confluence with Deerfield River, Deerfield/Greenfield.	1.4	B	010802030502	Bear River-Deerfield River	50.28	9.57	57.28	66	30	Franklin County-MA	8.2	0.0	83.90	0.10	0.42	Medium
33	Deerfield	MA33-22	Shingle Brook	Headwaters north of Guy Manners Road, Shelburne to confluence with the Deerfield River, Deerfield.	2.8	B	010802030502	Bear River-Deerfield River	50.28	9.57	57.28	66	30	Franklin County-MA	8.2	0.0	83.90	0.10	0.42	Medium
33	Deerfield	MA33-113	Schneck Brook	Headwaters, north of Wilder Hill Road, Conway to confluence with the Deerfield River, Conway.	2	B	010802030502	Bear River-Deerfield River	50.28	9.57	57.28	66	30	Franklin County-MA	8.2	0.0	83.90	0.10	0.42	Medium
33	Deerfield	MA33-133	Unnamed Tributary	Unnamed tributary to the Deerfield River from headwaters, outlet Goodnow Road Pond, Buckland to mouth at confluence with the Deerfield River, Buckland.	1.5	B	010802030502	Bear River-Deerfield River	50.28	9.57	57.28	66	30	Franklin County-MA	8.2	0.0	83.90	0.10	0.42	Medium
33	Deerfield	MA33-60	Hibbard Brook	Headwaters, north of West Leyden Road, Leyden to confluence with Green River, Leyden.	1.5	A (PWS, ORW, HQW, CWF)	010802030402	Lower Green River	50.7	11.91	56.78	65.19	37	Franklin County-MA	7.4	0.0	77.56	0.10	0.49	Medium
33	Deerfield	MA33-94	Workman Brook	Headwaters, perennial portion west of East Colrain Road, Colrain (drains wetland) to confluence with Green River, Colrain.	1.4	A (PWS, ORW, HQW, CWF)	010802030402	Lower Green River	50.7	11.91	56.78	65.19	37	Franklin County-MA	7.4	0.0	77.56	0.10	0.49	Medium
33	Deerfield	MA33-98	Stafford Brook	Headwaters, perennial portion south of East Colrain Road, Colrain to confluence with Green River, Colrain.	1.4	A (PWS, ORW, HQW, CWF)	010802030402	Lower Green River	50.7	11.91	56.78	65.19	37	Franklin County-MA	7.4	0.0	77.56	0.10	0.49	Medium
33	Deerfield	MA33-99	Katley Brook	Headwaters, east of Katley Hill, Leyden to confluence with Green River, Leyden.	1.3	A (PWS, ORW, HQW, CWF)	010802030402	Lower Green River	50.7	11.91	56.78	65.19	37	Franklin County-MA	7.4	0.0	77.56	0.10	0.49	Medium

* 3 or more freshwater mussel species (Carmignani 2020)

Nonpoint Source Management Section – HEALTHY WATERS

Basin ID	Basin Name	Segment ID	Waterbody Name	Description	Size (miles)	Class (Qualifiers)	HUC12 Number	HUC12 Name	Ecological Index	Stressor Index	Social Index	RPI Score	RPI Rank	Majority County	Slope_Mean_Value_in_HUC12_Watershed	Perc_MS4_in_HUC12_Watershed	PHWA_HEALTH_NDX_PCT_2016	PHWA_VULN_NDX_ST_2016	Vulnerability Percentile Only Prioritized Waterbodies	Vulnerability Status (within prioritized waterbodies only)
33	Deerfield	MA33-28	Green River	Vermont line, Colrain to water supply dam north of Eunice Williams Drive (Pumping Station Dam, National ID MA02291), Greenfield (formerly part of MA33-09).	8.4	A (PWS, ORW, HW, CWF)	010802030402	Lower Green River	50.7	11.91	56.78	65.19	37	Franklin County-MA	7.4	0.0	77.56	0.10	0.49	Medium
33	Deerfield	MA33-49	East Glen Brook	Headwaters, perennial portion north of East Glen Road, Leyden to inlet of Upper Greenfield Reservoir (Glen Brook Upper Reservoir), Leyden.	1.9	A (PWS, ORW)	010802030402	Lower Green River	50.7	11.91	56.78	65.19	37	Franklin County-MA	7.4	0.0	77.56	0.10	0.49	Medium
33	Deerfield	MA33-52	Glen Brook	Headwaters, east of Brattleboro Road, Leyden to inlet of Upper Greenfield Reservoir (Glen Brook Upper Reservoir), Leyden.	3.5	A (PWS, ORW)	010802030402	Lower Green River	50.7	11.91	56.78	65.19	37	Franklin County-MA	7.4	0.0	77.56	0.10	0.49	Medium
33	Deerfield	MA33-29	Green River	From water supply dam north of Eunice Williams Drive (Pumping Station Dam, National ID MA02291), Greenfield to the Swimming Pool #2 Dam (National Dam ID MA02321) northwest of Nashs Mill Road, Greenfield (formerly part of MA33-09).	4.6	B (CWF, HW)	010802030402	Lower Green River	50.7	11.91	56.78	65.19	37	Franklin County-MA	7.4	0.0	77.56	0.10	0.49	Medium
33	Deerfield	MA33-117	Brandy Brook	Headwaters east of North County Road, Leyden to confluence with Glen Brook, Leyden.	1.6	A (PWS, ORW)	010802030402	Lower Green River	50.7	11.91	56.78	65.19	37	Franklin County-MA	7.4	0.0	77.56	0.10	0.49	Medium
33	Deerfield	MA33-34	Allen Brook	Headwaters, east of the Shelburne Colrain Road and Route 2 intersection, Shelburne to confluence with Green River, Greenfield.	3.6	B	010802030402	Lower Green River	50.7	11.91	56.78	65.19	37	Franklin County-MA	7.4	0.0	77.56	0.10	0.49	Medium
33	Deerfield	MA33-84	Smead Brook	Headwaters, east of Old Albany Road, Greenfield to confluence with Wheeler Brook, Greenfield.	1.7	B	010802030402	Lower Green River	50.7	11.91	56.78	65.19	37	Franklin County-MA	7.4	0.0	77.56	0.10	0.49	Medium

* 3 or more freshwater mussel species (Carmignani 2020)

Nonpoint Source Management Section – HEALTHY WATERS

Basin ID	Basin Name	Segment ID	Waterbody Name	Description	Size (miles)	Class (Qualifiers)	HUC12 Number	HUC12 Name	Ecological Index	Stressor Index	Social Index	RPI Score	RPI Rank	Majority County	Slope_Mean_Value_in_HUC12_Watershed	Perc_MS4_in_HUC12_Watershed	PHWA_HEALTH_NDX_PCT_2016	PHWA_VULN_NDX_ST_2016	Vulnerability Percentile Only Prioritized Waterbodies	Vulnerability Status (within prioritized waterbodies only)
33	Deerfield	MA33-68	Mccard Brook	Headwaters, east of Oak Hill Road, Leyden to confluence with Mill Brook, Greenfield.	2.1	B	010802030402	Lower Green River	50.7	11.91	56.78	65.19	37	Franklin County-MA	7.4	0.0	77.56	0.10	0.49	Medium
33	Deerfield	MA33-96	Glen Brook	Outlet of Upper Greenfield Reservoir, Leyden to confluence with Green River, Greenfield.	3.2	B	010802030402	Lower Green River	50.7	11.91	56.78	65.19	37	Franklin County-MA	7.4	0.0	77.56	0.10	0.49	Medium
33	Deerfield	MA33-95	Wheeler Brook	Headwaters, south of Old Greenfield Road, Shelburne to confluence with Green River, Greenfield.	2.5	B	010802030402	Lower Green River	50.7	11.91	56.78	65.19	37	Franklin County-MA	7.4	0.0	77.56	0.10	0.49	Medium
33	Deerfield	MA33-100	Punch Brook	Headwaters, perennial portion east of Smead Road, Shelburne to confluence with Green River, Greenfield.	2.1	B	010802030402	Lower Green River	50.7	11.91	56.78	65.19	37	Franklin County-MA	7.4	0.0	77.56	0.10	0.49	Medium
33	Deerfield	MA33-105	Unnamed Tributary	Unnamed tributary to Glen Brook, headwaters north of Oak Hill Road, Leyden to confluence Glen Brook, Greenfield.	1.9	B	010802030402	Lower Green River	50.7	11.91	56.78	65.19	37	Franklin County-MA	7.4	0.0	77.56	0.10	0.49	Medium
33	Deerfield	MA33-103	Unnamed Tributary	Unnamed tributary to Hinsdale Brook, perennial portion east of Little Mohawk Road, Shelburne to confluence with Hinsdale Brook, Shelburne.	1.9	B	010802030402	Lower Green River	50.7	11.91	56.78	65.19	37	Franklin County-MA	7.4	0.0	77.56	0.10	0.49	Medium
33	Deerfield	MA33-104	Unnamed Tributary	Unnamed tributary to an unnamed tributary to Hinsdale Brook from Shearer Pond Dam (National Dam ID MA01531), Colrain to confluence with an unnamed tributary to Hinsdale Brook, Shelburne.	0.9	B	010802030402	Lower Green River	50.7	11.91	56.78	65.19	37	Franklin County-MA	7.4	0.0	77.56	0.10	0.49	Medium
33	Deerfield	MA33-132	Stewart Brook	Perennial portion north of Wilson Graves Road, Shelburne to mouth at confluence with Hinsdale Brook, Shelburne.	1	B	010802030402	Lower Green River	50.7	11.91	56.78	65.19	37	Franklin County-MA	7.4	0.0	77.56	0.10	0.49	Medium

* 3 or more freshwater mussel species (Carmignani 2020)

Nonpoint Source Management Section – HEALTHY WATERS

Basin ID	Basin Name	Segment ID	Waterbody Name	Description	Size (miles)	Class (Qualifiers)	HUC12 Number	HUC12 Name	Ecological Index	Stressor Index	Social Index	RPI Score	RPI Rank	Majority County	Slope_Mean_Value_in_HUC12_Watershed	Perc_MS4_in_HUC12_Watershed	PHWA_HEALTH_NDX_ST_PCT_2016	PHWA_VULN_NDX_ST_2016	Vulnerability Percentile Only Prioritized Waterbodies	Vulnerability Status (within prioritized waterbodies only)
33	Deerfield	MA33-61	Unnamed Tributary	Unnamed tributary to Clark Brook locally known as "Hog Hollow Brook", headwaters north of Bray Road, Buckland to confluence with Clark Brook, Buckland.	1.1	B (CWF)	010802030204	Clesson Brook	51.95	8.22	47.88	63.87	44	Franklin County-MA	9.2	0.0	91.22	0.07	0.09	Low
33	Deerfield	MA33-45	Cooley Brook	Headwaters, north of La Belle Road, Hawley to confluence with Clesson Brook, Buckland.	1.5	B	010802030204	Clesson Brook	51.95	8.22	47.88	63.87	44	Franklin County-MA	9.2	0.0	91.22	0.07	0.09	Low
33	Deerfield	MA33-79	Ruddock Brook	Headwaters, west of Dodge Corner Road, Hawley to confluence with Clesson Brook, Buckland.	1.1	B	010802030204	Clesson Brook	51.95	8.22	47.88	63.87	44	Franklin County-MA	9.2	0.0	91.22	0.07	0.09	Low
33	Deerfield	MA33-15	Clesson Brook	Outlet of unnamed pond south of Forget Road, Hawley through Cox Pond to confluence with Deerfield River, Buckland.	10.3	B	010802030204	Clesson Brook	51.95	8.22	47.88	63.87	44	Franklin County-MA	9.2	0.0	91.22	0.07	0.09	Low
33	Deerfield	MA33-16	Clark Brook	Headwaters, near Moonshine Road (Howes Road)/East Buckland Road, Buckland to confluence with Clesson Brook, Buckland.	3.8	B	010802030204	Clesson Brook	51.95	8.22	47.88	63.87	44	Franklin County-MA	9.2	0.0	91.22	0.07	0.09	Low
33	Deerfield	MA33-26	Smith Brook	Headwaters, outlet Upper Reservoir, Ashfield to confluence with Clesson Brook, Buckland.	2.7	B	010802030204	Clesson Brook	51.95	8.22	47.88	63.87	44	Franklin County-MA	9.2	0.0	91.22	0.07	0.09	Low
33	Deerfield	MA33-116	Unnamed Tributary	Unnamed tributary to Clesson Brook, headwaters north of Avery Road, Buckland to confluence with Clesson Brook, Buckland.	1.8	B	010802030204	Clesson Brook	51.95	8.22	47.88	63.87	44	Franklin County-MA	9.2	0.0	91.22	0.07	0.09	Low
33	Deerfield	MA33-25	Foundry Brook	Headwaters north of Calvin Coombs Road, Colrain to confluence with East Branch North River, Colrain.	2.8	B	010802030301	East Branch North River	42.32	7.6	60.62	65.11	38	Windham County-VT	8.2	0.0	NA	NA	Not Classified	High

* 3 or more freshwater mussel species (Carmignani 2020)

Nonpoint Source Management Section – HEALTHY WATERS

Basin ID	Basin Name	Segment ID	Waterbody Name	Description	Size (miles)	Class (Qualifiers)	HUC12 Number	HUC12 Name	Ecological Index	Stressor Index	Social Index	RPI Score	RPI Rank	Majority County	Slope_Mean_Value_in_HUC12_Watershed	Perc_MS4_in_HUC12_Watershed	PHWA_HEALTH_NDX_PCT_2016	PHWA_VULN_NDX_ST_2016	Vulnerability Percentile Only Prioritized Waterbodies	Vulnerability Status (within prioritized waterbodies only)
33	Deerfield	MA33-106	Spur Brook	Headwaters, outlet small pond just west at intersection of Christian Hill Road and Thompson Road, Colrain to confluence with East Branch North River, Colrain.	2	B	010802030301	East Branch North River	42.32	7.6	60.62	65.11	38	Windham County-VT	8.2	0.0	NA	NA	Not Classified	High
33	Deerfield	MA33-109	Unnamed Tributary	Unnamed tributary to West Branch North River, headwaters west of Wilson Hill Road, Colrain to confluence with West Branch North River, Colrain.	1.4	B	010802030301	East Branch North River	42.32	7.6	60.62	65.11	38	Windham County-VT	8.2	0.0	NA	NA	Not Classified	High
33	Deerfield	MA33-108	Unnamed Tributary	Unnamed tributary to East Branch North River, headwaters outlet Mt. Brook Reservoir, Colrain to confluence with East Branch North River, Colrain.	1.4	B	010802030301	East Branch North River	42.32	7.6	60.62	65.11	38	Windham County-VT	8.2	0.0	NA	NA	Not Classified	High
33	Deerfield	MA33-107	Unnamed Tributary	Unnamed tributary to the East Branch North River, headwaters south of Fairbanks Road, Colrain to the confluence of the East Branch North River, Colrain.	1.7	B	010802030301	East Branch North River	42.32	7.6	60.62	65.11	38	Windham County-VT	8.2	0.0	NA	NA	Not Classified	High
33	Deerfield	MA33-134	Unnamed Tributary	Unnamed tributary to East Branch North River from headwaters east of Franklin Hill Road and southwest at Franklin Hill, Colrain to mouth at confluence with East Branch North River, Colrain.	0.7	B	010802030301	East Branch North River	42.32	7.6	60.62	65.11	38	Windham County-VT	8.2	0.0	NA	NA	Not Classified	High
34	Connecticut	MA34-41*	Sawmill River	Dudleyville Road, Leverett to mouth at confluence with Connecticut River, Montague (formerly part of MA34-26).	11	B (CWF)	010802010601	Sawmill River	68.35	6.44	55.28	72.4	12	Franklin County-MA	6.0	0.0	84.39	0.14	0.67	Medium
34	Connecticut	MA34-40	Sawmill River	Headwaters, outlet Lake Wyola, Shutesbury to Dudleyville Road, Leverett (formerly part of MA34-26).	2	B	010802010601	Sawmill River	68.35	6.44	55.28	72.4	12	Franklin County-MA	6.0	0.0	84.39	0.14	0.67	Medium

* 3 or more freshwater mussel species (Carmignani 2020)

Nonpoint Source Management Section – HEALTHY WATERS

Basin ID	Basin Name	Segment ID	Waterbody Name	Description	Size (miles)	Class (Qualifiers)	HUC12 Number	HUC12 Name	Ecological Index	Stressor Index	Social Index	RPI Score	RPI Rank	Majority County	Slope_Mean_Value_in_HUC12_Watershed	Perc_MS4_in_HUC12_Watershed	PHWA_HEAL_TH_NDX_ST_PCT_2016	PHWA_VULN_NDX_ST_2016	Vulnerability Percentile Only Prioritized Waterbodies	Vulnerability Status (within prioritized waterbodies only)
34	Connecticut	MA34-10	Manhan River	Headwaters, northeast of Norwich Pond, Huntington to inlet Tighe Carmody Reservoir, Southampton (thru White Reservoir formerly segment MA34100).	6.6	A (PWS, ORW)	010802010608	Upper Manhan River	70.71	8.54	51.99	71.39	13	Hampshire County-MA	5.4	4.2	58.05	0.23	0.88	High
34	Connecticut	MA34-16	Tripple Brook	Headwaters, perennial portion, Southampton to mouth at confluence with Manhan River, Southampton.	1	B (CWF)	010802010608	Upper Manhan River	70.71	8.54	51.99	71.39	13	Hampshire County-MA	5.4	4.2	58.05	0.23	0.88	High
34	Connecticut	MA34-17	Moose Brook	Headwaters, perennial portion, Southampton to mouth at confluence with Manhan River, Southampton.	2.6	B (CWF)	010802010608	Upper Manhan River	70.71	8.54	51.99	71.39	13	Hampshire County-MA	5.4	4.2	58.05	0.23	0.88	High
34	Connecticut	MA34-54	North Branch Manhan River	Headwaters, perennial portion, north of Northwest Road, Westhampton to mouth at confluence with Manhan River, Easthampton/Southampton.	9.2	B (CWF)	010802010608	Upper Manhan River	70.71	8.54	51.99	71.39	13	Hampshire County-MA	5.4	4.2	58.05	0.23	0.88	High
34	Connecticut	MA34-45	Sacket Brook	Headwaters, perennial portion, north of Southampton Road, Montgomery to mouth at confluence with Manhan River, Southampton.	2.1	B (CWF)	010802010608	Upper Manhan River	70.71	8.54	51.99	71.39	13	Hampshire County-MA	5.4	4.2	58.05	0.23	0.88	High
34	Connecticut	MA34-12	Potash Brook	Headwaters, perennial portion, Southampton to confluence with Manhan River, Southampton.	1	B	010802010608	Upper Manhan River	70.71	8.54	51.99	71.39	13	Hampshire County-MA	5.4	4.2	58.05	0.23	0.88	High
34	Connecticut	MA34-13	Brickyard Brook	Headwaters, perennial portion, Westfield to mouth at confluence with Manhan River, Westfield.	1.6	B	010802010608	Upper Manhan River	70.71	8.54	51.99	71.39	13	Hampshire County-MA	5.4	4.2	58.05	0.23	0.88	High

* 3 or more freshwater mussel species (Carmignani 2020)

Nonpoint Source Management Section – HEALTHY WATERS

Basin ID	Basin Name	Segment ID	Waterbody Name	Description	Size (miles)	Class (Qualifiers)	HUC12 Number	HUC12 Name	Ecological Index	Stressor Index	Social Index	RPI Score	RPI Rank	Majority County	Slope_Mean_Value_in_HUC12_Watershed	Perc_MS4_in_HUC12_Watershed	PHWA_HEALTH_NDX_PCT_2016	PHWA_VULN_NDX_ST_2016	Vulnerability Percentile Only Prioritized Waterbodies	Vulnerability Status (within prioritized waterbodies only)
34	Connecticut	MA34-50	Dean Brook	Headwaters, east of West Pelham Road (at mouth of Baker Brook), Shutesbury to mouth at confluence with Adams Brook (in small "diversion pool" for Atkins Reservoir), Shutesbury.	2.4	A (PWS, ORW, CWF)	010802010605	Fort River	66.47	12.34	51.4	68.51	23	Hampshire County-MA	4.5	21.3	34.15	0.27	0.95	High
34	Connecticut	MA34-59	Nurse Brook	Headwaters, west of Pratt Corner Road, Shutesbury to mouth at confluence with Adams Brook (in small "diversion pool" for Atkins Reservoir), Shutesbury.	1.2	A (PWS, ORW, CWF)	010802010605	Fort River	66.47	12.34	51.4	68.51	23	Hampshire County-MA	4.5	21.3	34.15	0.27	0.95	High
34	Connecticut	MA34-48	Harris Brook	Headwaters, northeast of Enfield Road, Pelham to Intake Reservoir Dam (NATID: MA01270) outlet, Pelham (excluding approximately 0.2 miles through Hawley Reservoir, Pelham).	1.2	A (PWS, ORW, CWF)	010802010605	Fort River	66.47	12.34	51.4	68.51	23	Hampshire County-MA	4.5	21.3	34.15	0.27	0.95	High
34	Connecticut	MA34-49	Buffum Brook	Headwaters, west of West Pelham Road, Shutesbury to mouth at confluence with Harris Brook, (forming headwaters Amethyst Brook), Pelham.	3.1	B (CWF)	010802010605	Fort River	66.47	12.34	51.4	68.51	23	Hampshire County-MA	4.5	21.3	34.15	0.27	0.95	High
34	Connecticut	MA34-46	Scarboro Brook	Headwaters, outlet Scarboro Pond, Belchertown to mouth at confluence with Hop Brook, Belchertown.	2.3	B (CWF)	010802010605	Fort River	66.47	12.34	51.4	68.51	23	Hampshire County-MA	4.5	21.3	34.15	0.27	0.95	High
34	Connecticut	MA34-35	Amethyst Brook	Headwaters, confluence of Buffum and Harris brooks, Pelham to mouth at confluence with Adams River (forming headwaters Fort River), Amherst.	2.1	B	010802010605	Fort River	66.47	12.34	51.4	68.51	23	Hampshire County-MA	4.5	21.3	34.15	0.27	0.95	High
34	Connecticut	MA34-61	Hop Brook	Headwaters, west of Oasis Drive, Belchertown to mouth at confluence with Fort River, Amherst.	8.6	B	010802010605	Fort River	66.47	12.34	51.4	68.51	23	Hampshire County-MA	4.5	21.3	34.15	0.27	0.95	High

* 3 or more freshwater mussel species (Carmignani 2020)

Nonpoint Source Management Section – HEALTHY WATERS

Basin ID	Basin Name	Segment ID	Waterbody Name	Description	Size (miles)	Class (Qualifiers)	HUC12 Number	HUC12 Name	Ecological Index	Stressor Index	Social Index	RPI Score	RPI Rank	Majority County	Slope_Mean_Value_in_HUC12_Watershed	Perc_MS4_in_HUC12_Watershed	PHWA_HEALTH_NDX_PCT_2016	PHWA_VULN_NDX_ST_2016	Vulnerability Percentile Only Prioritized Waterbodies	Vulnerability Status (within prioritized waterbodies only)
34	Connecticut	MA34-33	Fall River	Vermont/Massachusetts border, Bernardston to mouth at confluence with Connecticut River, Greenfield/Gill.	10.2	B (CWF)	010802010502	Fall River	59.51	10.1	47.99	65.8	31	Franklin County-MA	8.2	0.0	89.76	0.08	0.32	Medium
34	Connecticut	MA34-57	Shattuck Brook	Headwaters, confluence Keets and Beaver Meadow brooks, Leyden to mouth at confluence with Fall River, Bernardston.	2.4	B (CWF)	010802010502	Fall River	59.51	10.1	47.99	65.8	31	Franklin County-MA	8.2	0.0	89.76	0.08	0.32	Medium
34	Connecticut	MA34-08	Temple Brook	Headwaters, outlet Bradley Pond, Monson to mouth at confluence with Scantic River, Hampden.	3.6	B	010802050201	Upper Scantic River	59.43	9.46	46.48	65.49	34	Hampden County-MA	5.3	27.8	67.80	0.23	0.91	High
34	Connecticut	MA34-18	Broad Brook	Headwaters, Holyoke to mouth at inlet Nashawannuck Pond, Easthampton.	9.3	B (CWF)	010802010609	Lower Manhan River	63.53	11.21	43.6	65.31	35	Hampshire County-MA	4.7	69.4	38.54	0.30	0.98	High
34	Connecticut	MA34-14	White Brook	Headwaters, perennial portion, Easthampton to mouth at inlet Nashawannuck Pond, Easthampton.	1.8	B	010802010609	Lower Manhan River	63.53	11.21	43.6	65.31	35	Hampshire County-MA	4.7	69.4	38.54	0.30	0.98	High
34	Connecticut	MA34-37	East Branch Mill River	Headwaters, confluence with Bradford Brook, Williamsburg to mouth at confluence with West Branch Mill River (forming headwaters Mill River), Williamsburg.	2.8	B (CWF)	010802010606	Mill River	51.07	7.46	48.09	63.9	43	Hampshire County-MA	6.4	13.9	77.07	0.21	0.78	High
34	Connecticut	MA34-38	West Branch Mill River	East Street, Goshen to the confluence of Meekin Brook, Williamsburg.	5.9	B (CWF)	010802010606	Mill River	51.07	7.46	48.09	63.9	43	Hampshire County-MA	6.4	13.9	77.07	0.21	0.78	High
34	Connecticut	MA34-52	Joe Wright Brook	Headwaters south of Hemenway Trail, Williamsburg to mouth at confluence with Mill River, Williamsburg.	3.3	B (CWF)	010802010606	Mill River	51.07	7.46	48.09	63.9	43	Hampshire County-MA	6.4	13.9	77.07	0.21	0.78	High

* 3 or more freshwater mussel species (Carmignani 2020)

Nonpoint Source Management Section – HEALTHY WATERS

Basin ID	Basin Name	Segment ID	Waterbody Name	Description	Size (miles)	Class (Qualifiers)	HUC12 Number	HUC12 Name	Ecological Index	Stressor Index	Social Index	RPI Score	RPI Rank	Majority County	Slope_Mean_Value_in_HUC12_Watershed	Perc_MS4_in_HUC12_Watershed	PHWA_HEALTH_NDX_PCT_2016	PHWA_VULN_NDX_ST_2016	Vulnerability Percentile Only Prioritized Waterbodies	Vulnerability Status (within prioritized waterbodies only)
34	Connecticut	MA34-51	Rogers Brook	Headwaters east of Oak Hill Road near the Goshen/Ashfield border to mouth at confluence with West Branch Mill River, Goshen.	2.6	B (CWF)	010802010606	Mill River	51.07	7.46	48.09	63.9	43	Hampshire County-MA	6.4	13.9	77.07	0.21	0.78	High
34	Connecticut	MA34-39	West Branch Mill River	From the confluence of Meekin Brook, Williamsburg to mouth at confluence with East Branch Mill River (forming headwaters Mill River), Williamsburg.	0.6	B	010802010606	Mill River	51.07	7.46	48.09	63.9	43	Hampshire County-MA	6.4	13.9	77.07	0.21	0.78	High
34	Connecticut	MA34-33	Fall River	Vermont/Massachusetts border, Bernardston to mouth at confluence with Connecticut River, Greenfield/Gill.	10.2	B (CWF)	010802010503	Dry Brook-Connecticut River	40.65	8.41	59.26	63.83	46	Franklin County-MA	6.4	0.0	44.39	0.14	0.65	Medium
34	Connecticut	MA34-56	Fourmile Brook	Headwaters, south of the intersection of Four Mile Brook Road and South Mountain Road, Northfield, to mouth at confluence with Connecticut River, Northfield.	3.4	B (CWF)	010802010503	Dry Brook-Connecticut River	40.65	8.41	59.26	63.83	46	Franklin County-MA	6.4	0.0	44.39	0.14	0.65	Medium
34	Connecticut	MA34-54	North Branch Manhan River	Headwaters, perennial portion, north of Northwest Road, Westhampton to mouth at confluence with Manhan River, Easthampton/Southampton.	9.2	B (CWF)	010802010607	North Branch Manhan River	46.43	5.77	50.83	63.83	47	Hampshire County-MA	5.9	3.7	76.59	0.18	0.74	Medium
34	Connecticut	MA34-53	Sodom Brook	Headwaters, outlet small unnamed pond north of Crowley Road, Westampton to mouth at confluence with North Branch Manhan River, Westampton.	3.1	B (CWF)	010802010607	North Branch Manhan River	46.43	5.77	50.83	63.83	47	Hampshire County-MA	5.9	3.7	76.59	0.18	0.74	Medium
34	Connecticut	MA34-47	Rice Brook	Headwaters, perennial portion, south of Burt Road, Westhampton to mouth at confluence with Sodom Brook, Westhampton.	1.1	B (CWF)	010802010607	North Branch Manhan River	46.43	5.77	50.83	63.83	47	Hampshire County-MA	5.9	3.7	76.59	0.18	0.74	Medium

* 3 or more freshwater mussel species (Carmignani 2020)

Nonpoint Source Management Section – HEALTHY WATERS

Basin ID	Basin Name	Segment ID	Waterbody Name	Description	Size (miles)	Class (Qualifiers)	HUC12 Number	HUC12 Name	Ecological Index	Stressor Index	Social Index	RPI Score	RPI Rank	Majority County	Slope_Mean_Value_in_HUC12_Watershed	Perc_MS4_in_HUC12_Watershed	PHWA_HEALTH_NDX_PCT_2016	PHWA_VULN_NDX_ST_2016	Vulnerability Percentile Only Prioritized Waterbodies	Vulnerability Status (within prioritized waterbodies only)
34	Connecticut	MA34-64	Dry Brook	Headwaters, west of Huckle Hill Road, Bernardston to mouth at confluence with the Connecticut River, Gill.	8.3	B	010802010503	Dry Brook-Connecticut River	40.65	8.41	59.26	63.83	46	Franklin County-MA	6.4	0.0	44.39	0.14	0.65	Medium
36	Chicopee	MA36-02*	West Branch Ware River	Headwaters, outlet Brigham Pond, Hubbardston to mouth at confluence with East Branch Ware River (forming headwaters of Ware River), Barre.	4.5	A (PWS, ORW)	010802040201	West Branch Ware River	59.95	4.89	55.63	70.23	17	Worcester County-MA	3.6	0.0	94.63	0.14	0.67	Medium
36	Chicopee	MA36-44	Joslin Brook	Headwaters, outlet Lovewell Pond, Hubbardston to mouth at confluence with Mason Brook, Hubbardston.	3.3	A (PWS, ORW)	010802040201	West Branch Ware River	59.95	4.89	55.63	70.23	17	Worcester County-MA	3.6	0.0	94.63	0.14	0.67	Medium
36	Chicopee	MA36-35*	East Branch Swift River	Headwaters, confluence of Shattuck and Popple Camp brooks, Phillipston to mouth at inlet Pottapaug Pond, Petersham (through Connor Pond formerly segment MA36039).	9.8	A (PWS, ORW)	010802040102	Headwaters East Branch Swift River	64.25	4.38	48.48	69.45	20	Worcester County-MA	4.9	0.0	85.85	0.10	0.49	Medium
36	Chicopee	MA36-46	Bottle Brook	Headwaters, perennial portion, east of Dunhamtown Brimfield Road, Brimfield to mouth at confluence with Quaboag River, Brimfield.	2	B	010802040305	Middle Quaboag River	63.85	6.71	47.54	68.23	24	Worcester County-MA	6.2	0.0	80.00	0.21	0.83	High
36	Chicopee	MA36-47	East Branch Fever Brook	Headwaters, outlet Brooks Pond, Petersham to mouth at inlet Quabbin Reservoir, Petersham.	5.2	A (PWS, ORW)	010802040103	East Branch Fever Brook	51.05	2.32	48.63	65.79	32	Worcester County-MA	4.8	0.0	93.66	0.11	0.61	Medium
41	Quinebaug	MA41-07	Mill Brook	From inlet of Mill Road Pond (formerly pond segment MA41032), Brimfield to mouth at confluence with Quinebaug River, Brimfield.	4.7	B	011000010102	Headwaters Quinebaug River	64.34	6.24	32.9	63.66	49	Hampden County-MA	5.5	2.0	73.66	0.24	0.91	High
41	Quinebaug	MA41-08	Wales Brook	Headwaters, outlet Lake George, Wales to mouth at confluence with Mill Brook, Brimfield.	5.2	B	011000010102	Headwaters Quinebaug River	64.34	6.24	32.9	63.66	49	Hampden County-MA	5.5	2.0	73.66	0.24	0.91	High

* 3 or more freshwater mussel species (Carmignani 2020)

Nonpoint Source Management Section – HEALTHY WATERS

Basin ID	Basin Name	Segment ID	Waterbody Name	Description	Size (miles)	Class (Qualifiers)	HUC12 Number	HUC12 Name	Ecological Index	Stressor Index	Social Index	RPI Score	RPI Rank	Majority County	Slope_Mean_Value_in_HUC12_Watershed	Perc_MS4_in_HUC12_Watershed	PHWA_HEAL_TH_NDX_ST_PCT_2016	PHWA_VULN_NDX_ST_2016	Vulnerability Percentile Only Prioritized Waterbodies	Vulnerability Status (within prioritized waterbodies only)
41	Quinebaug	MA41-18	Mountain Brook	Headwaters, east of Steerage Rock Road (excluding intermittent portion), Brimfield to mouth at confluence with Mill Brook, Brimfield.	1.9	B	011000010102	Headwaters Quinebaug River	64.34	6.24	32.9	63.66	49	Hampden County-MA	5.5	2.0	73.66	0.24	0.91	High
41	Quinebaug	MA41-24	Hollow Brook	Headwaters, west of Hollow Road, Wales to mouth at confluence with Mill Brook, Brimfield.	2.7	B	011000010102	Headwaters Quinebaug River	64.34	6.24	32.9	63.66	49	Hampden County-MA	5.5	2.0	73.66	0.24	0.91	High
41	Quinebaug	MA41-26	Unnamed Tributary	Unnamed tributary locally known as 'Freeman's Brook' from headwaters west of Cronin Road, Warren to an unnamed tributary to Long Pond, Sturbridge.	2.6	B	011000010102	Headwaters Quinebaug River	64.34	6.24	32.9	63.66	49	Hampden County-MA	5.5	2.0	73.66	0.24	0.91	High
41	Quinebaug	MA41-27	Unnamed Tributary	Unnamed tributary to Mill Brook, headwaters south of East Hill Road, Brimfield to mouth at confluence with Mill Brook, Brimfield.	1.7	B	011000010102	Headwaters Quinebaug River	64.34	6.24	32.9	63.66	49	Hampden County-MA	5.5	2.0	73.66	0.24	0.91	High
81	Nashua	MA81-77	Trapfall Brook	Headwaters, north of Jones Hill Road, Ashby to mouth at confluence with Willard Brook, Ashby.	5.5	B (ORW)	010700040301	Willard Brook	63.28	6.33	37.94	64.96	39	Middlesex County-MA	5.5	3.6	54.15	0.25	0.95	High
81	Nashua	MA81-78	Locke Brook	From New Hampshire border, Ashby to mouth at confluence with Willard Brook, Townsend.	4.4	B (ORW)	010700040301	Willard Brook	63.28	6.33	37.94	64.96	39	Middlesex County-MA	5.5	3.6	54.15	0.25	0.95	High

* 3 or more freshwater mussel species (Carmignani 2020)