



Renewable Energy Planning & Leasing: Next Steps for the Gulf of Maine

Office of Renewable Energy Programs

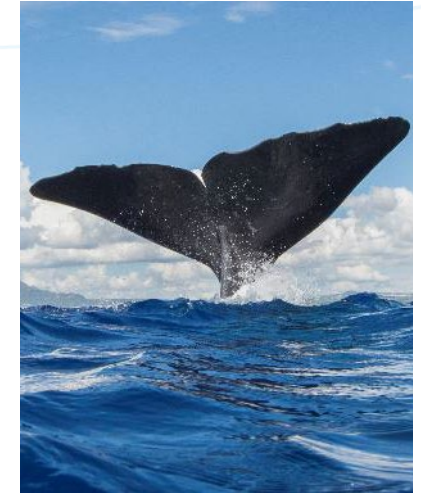
Zach Jylkka, Project Coordinator

May 24, 2022



Presentation Topics

- State of Maine Research Lease Application
- BOEM Commercial Planning & Leasing Process
- RFI Development Framework
- Gulf of Maine Leasing Timeline
- BOEM Engagement
- Questions



State of Maine's Research Lease Application

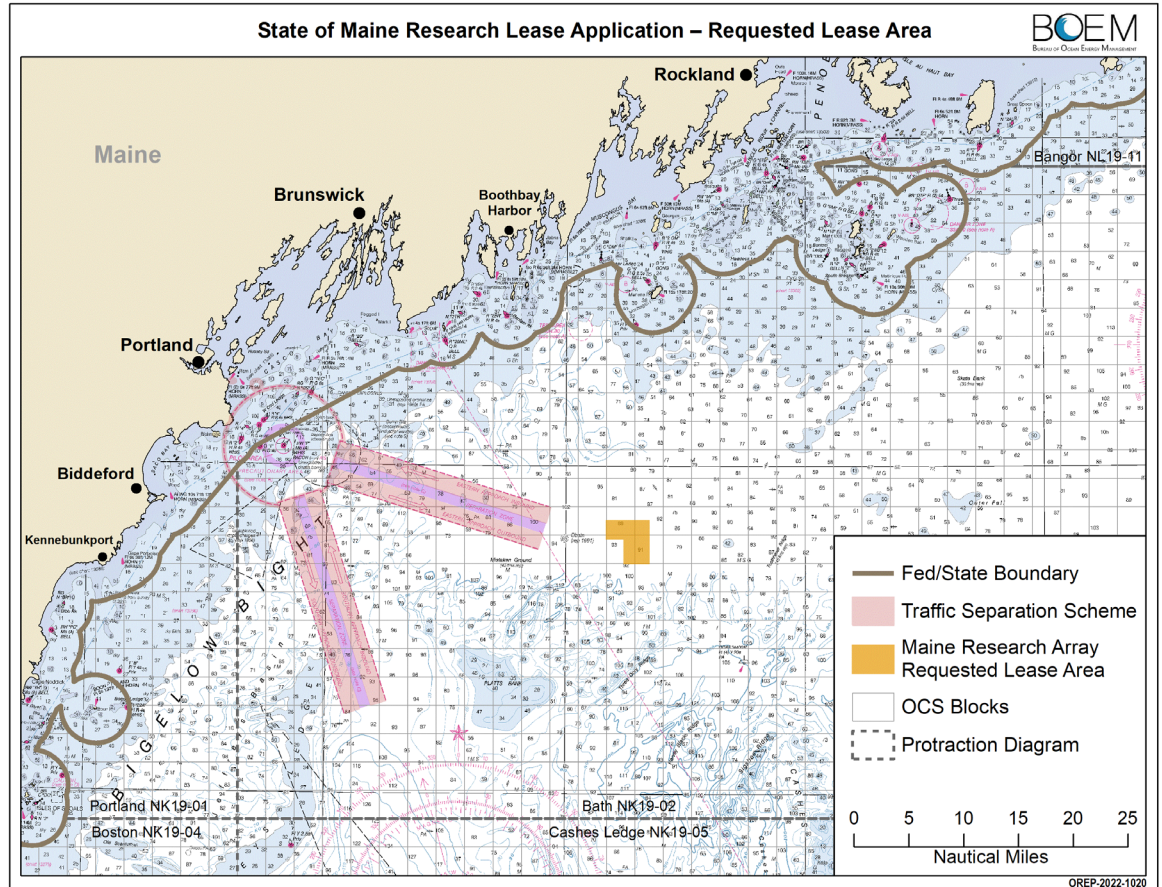
State of Maine Research Array

Maine submitted a research lease application (Oct. 2021) for a floating research array in Federal Waters

- ~25 nmi from the mainland; 15 Square Miles (~10,000 acres)
- ≤ 12 Floating Turbines (up to 144 MW)
- BOEM currently reviewing and processing application

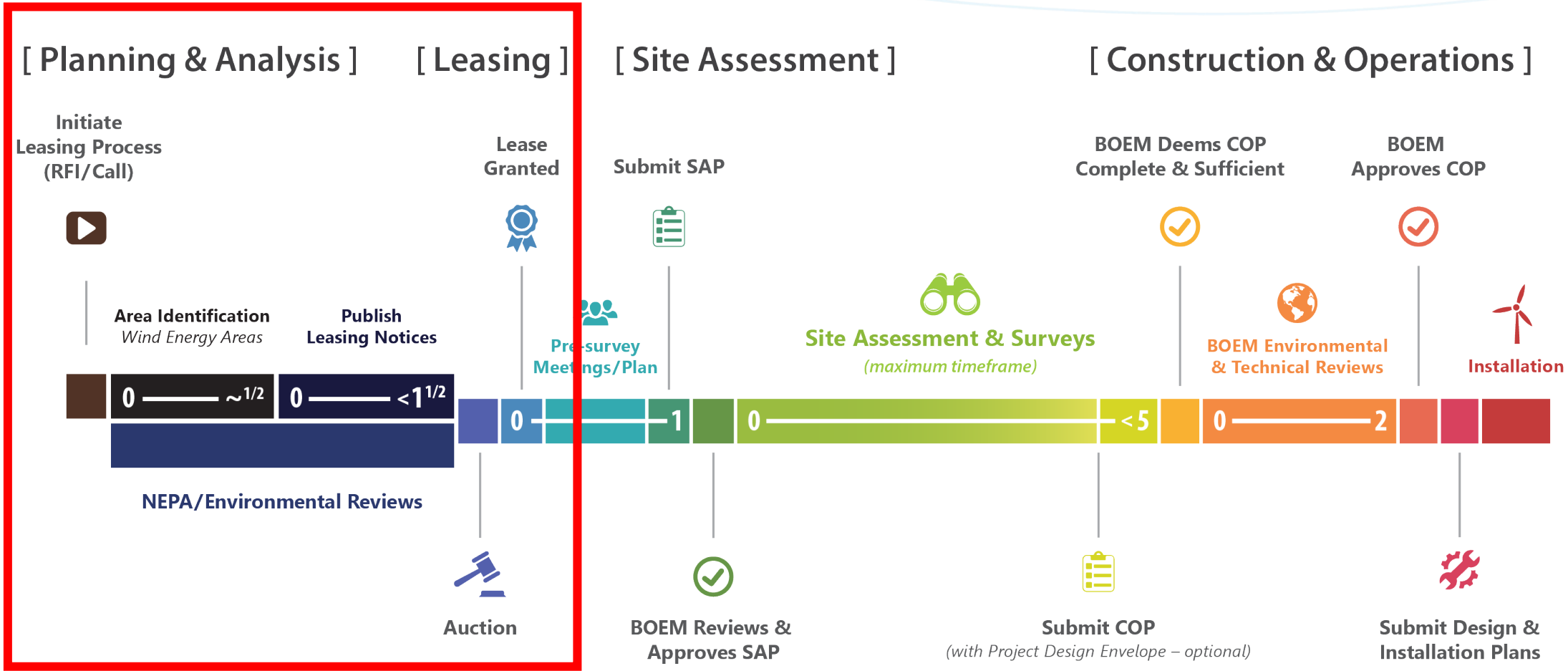
BOEM Process: Unsolicited Lease Request

- Qualifications (Legal, Technical, Financial)
- Request for Competitive Interest (RFCI)
 - Publication expected early summer (2022)
 - 30-day comment period
- **Competitive Interest** → Competitive Leasing Process
- **No Competitive Interest** → Suitability Analysis, Environmental Assessment, Lease Negotiation



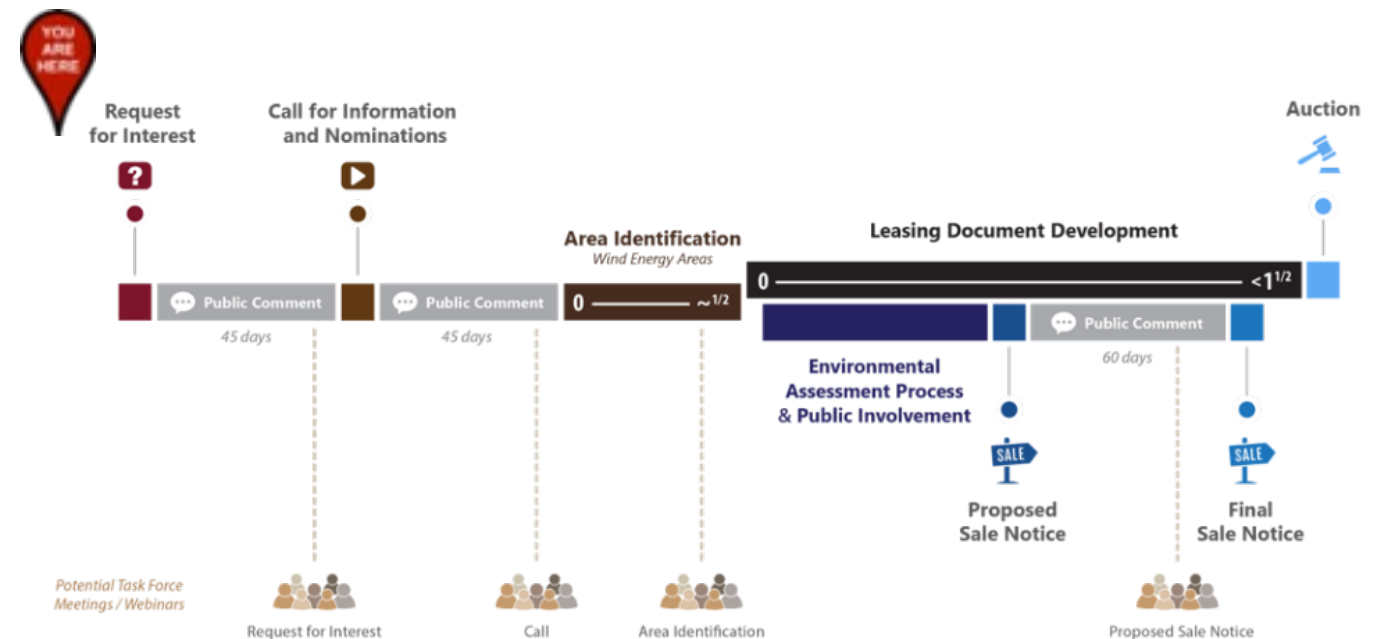
[BOEM Website: State of Maine Research Lease Application](#)

Renewable Energy Process: From RFI/Call to Operation



RFI Development Framework

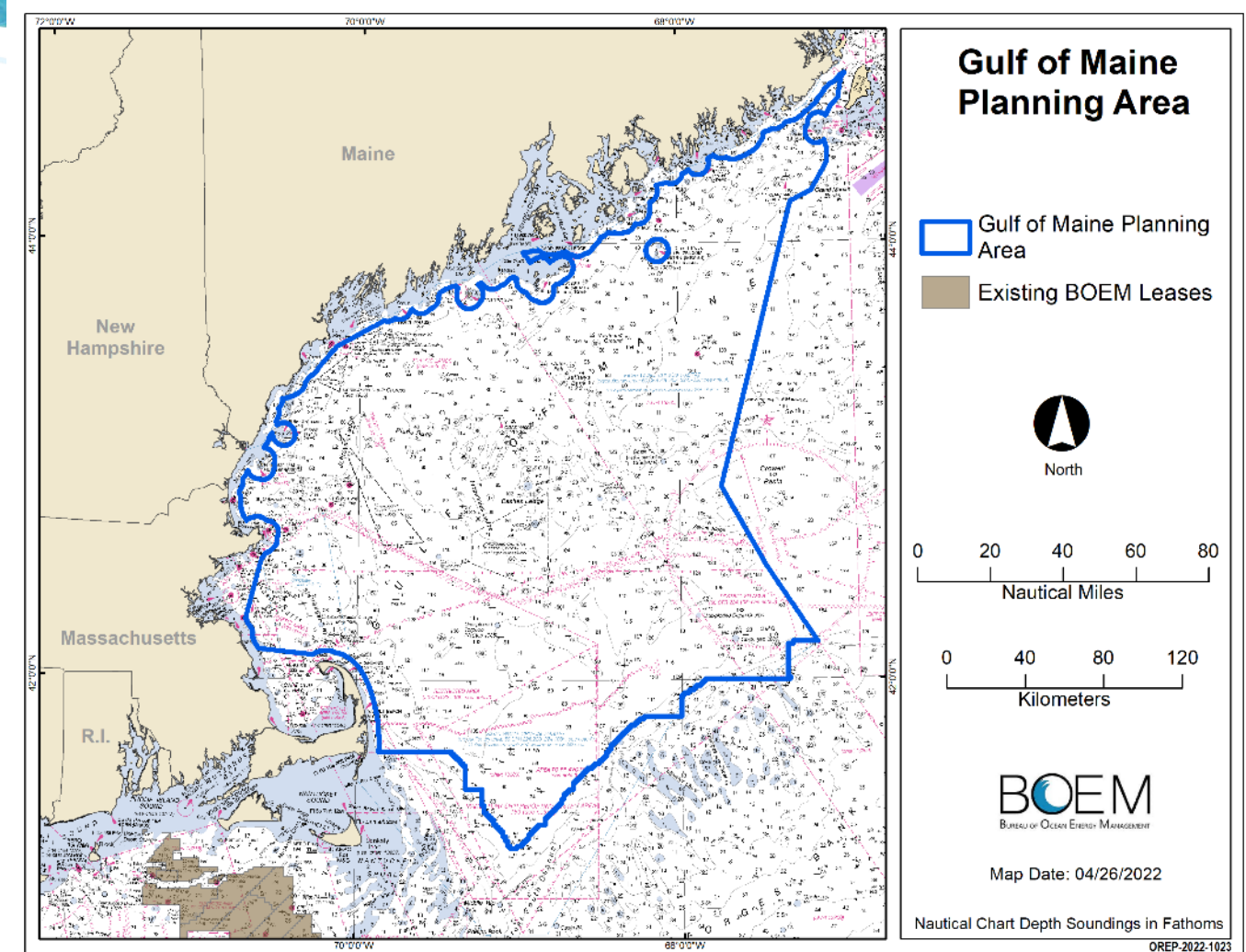
- BOEM has decided to start with a request for interest (RFI)
- Gauge commercial interest in offshore wind development
- Maximize the opportunity for the public to engage and provide input
- Development Framework provides transparency on BOEM's process and thinking



[Link to RFI Development Framework](#)

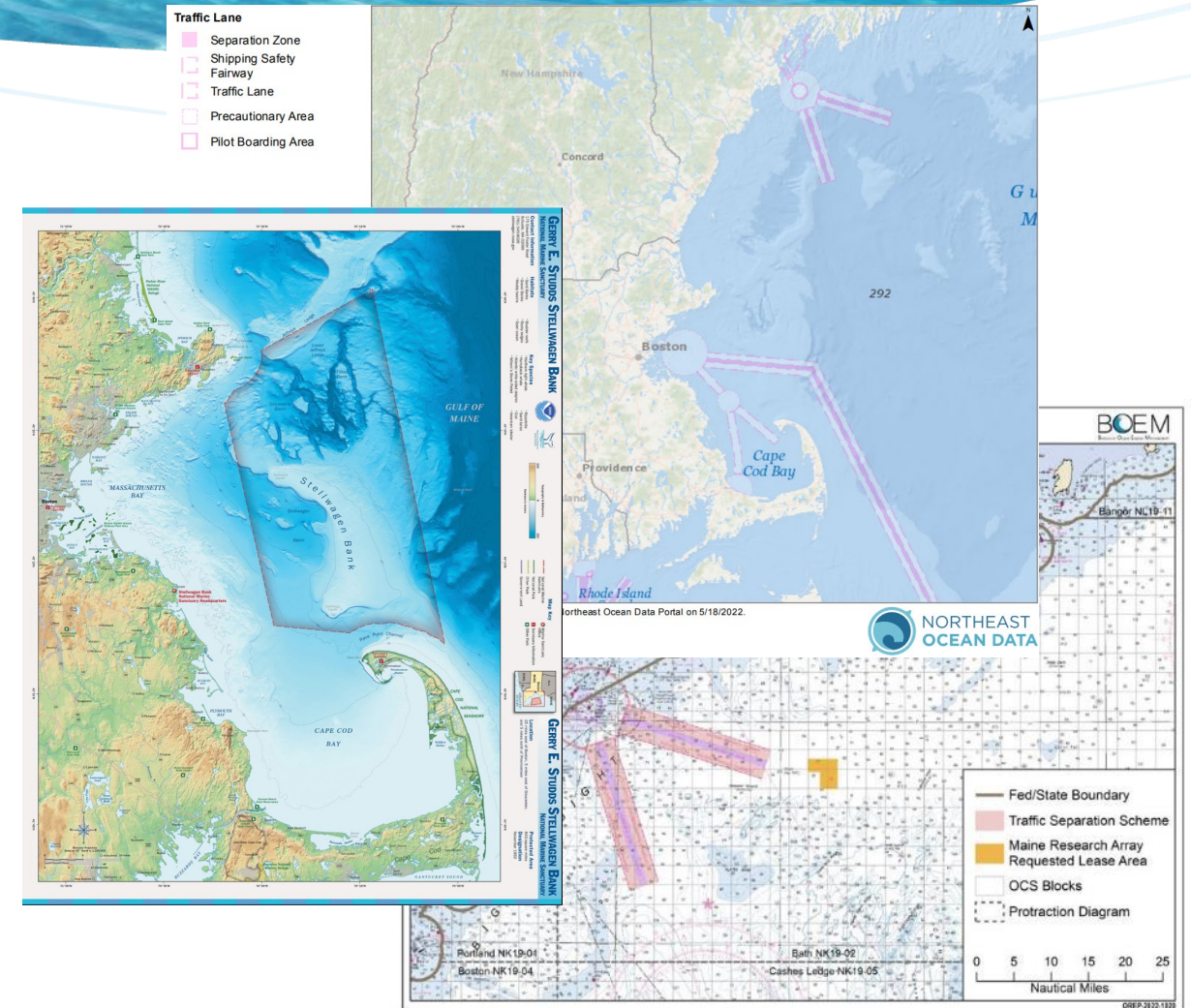
Gulf of Maine Planning Area

- Roughly bounded on the west, north, and east by BOEM's jurisdiction for renewable energy activities on the outer continental shelf (OCS)
 - 3 nmi from shore to the Exclusive Economic Zone (EEZ)
- Southern boundary BOEM defined by the unique features that create the Gulf of Maine.



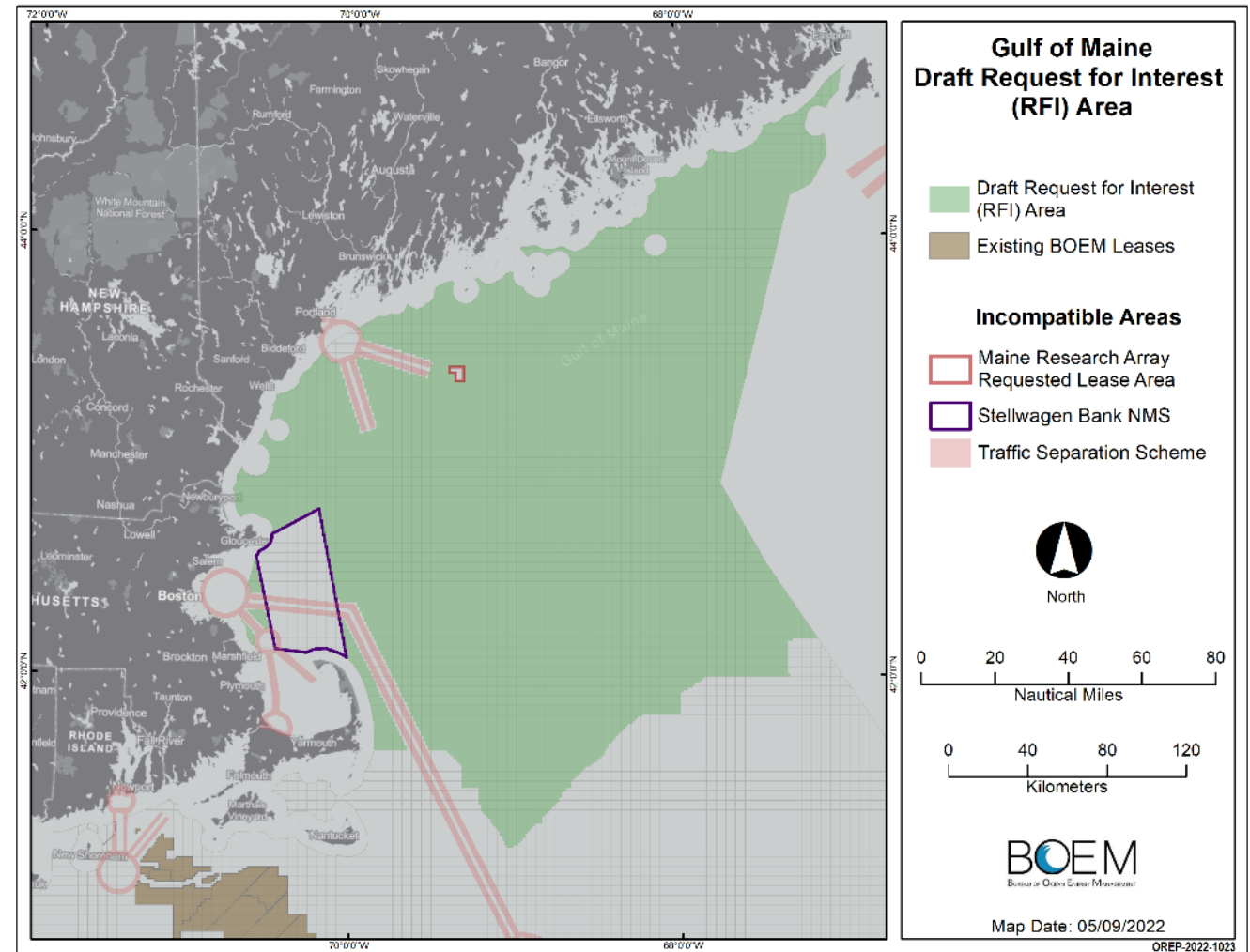
RFI Incompatible Areas

- National Park System, National Wildlife Refuge System, National Marine Sanctuary System, or any National Monument (§585.204)
- Existing Traffic Separation Schemes (TSS), fairways, or other internationally recognized navigation measures
- Existing BOEM lease areas
- Unsolicited lease request areas that are the subject of a separate request for competitive interest



DRAFT RFI Area

- Only incompatible areas removed to date
- BOEM recognizes that conflicted areas remain within this RFI
 - RFI is largely an information gathering step.
 - Winnowing process continues in future steps (e.g., Call Area, Wind Energy Areas)
 - Significant removals expected



RFI Requested Information

Requested Information Categories

(examples from RFI Development Framework, not an exhaustive list):

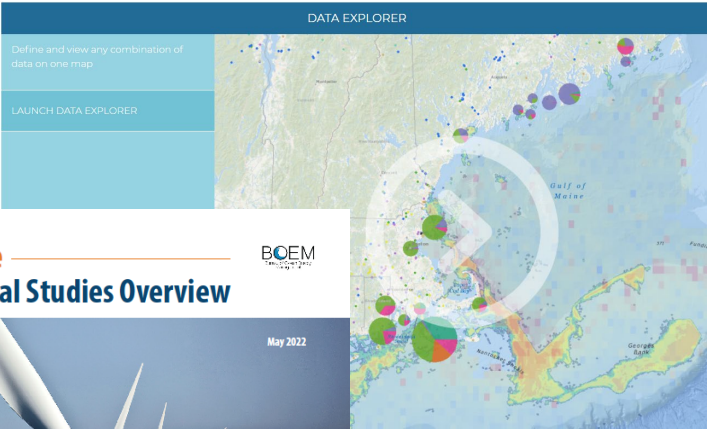
- Commercial/recreational fishing
- Protected species and habitat
- Tribal issues of concern and indigenous traditional knowledge
- Technical/economic factors such as distance from shore, electricity demand, existing grid interconnections, etc.
- Other uses of the OCS



Data & Public Engagement

Assemble the best available science and data, including Traditional Knowledge

- Robust Public **Engagement** + **Transparency** on Process & Decision-Making
- BOEM Environmental Studies Program
- Northeast Ocean Data Portal / BOEM Marine Cadastre
- RFI Comment Period, Call for Information & Nominations, etc.
- Exploring additional spatial modeling approaches



Gulf of Maine Environmental Studies Overview

May 2022

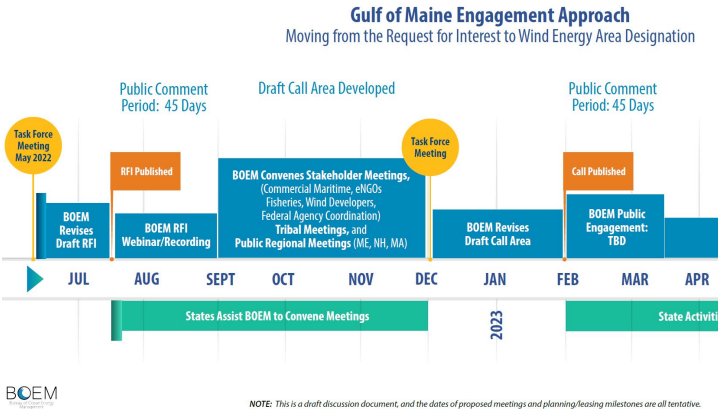
BOEM

Through the Bureau of Ocean Energy Management (BOEM) Environmental Studies Program, BOEM funds scientific research to inform decisions about offshore wind. BOEM has invested more than \$80 million in collecting baseline information about the distribution and abundance of marine life, birds, and bats and potential impacts from development (seafloor disturbance, sound, electromagnetic fields [EMF]). The topics studied are informed through intergovernmental task forces, public meetings, formal information solicitations, and recommendations made in BOEM-funded studies. BOEM identifies priorities annually during the development of the [study plan](#). Selected studies that provide information about the Gulf of Maine are listed below. A complete list of studies that are *in progress or completed* is available on the BOEM website. BOEM also supports regional data portals, such as the [Northeast Ocean Data Portal](#), where data form study products are made available to the public.

BOEM has invested over **\$80 million** in collecting baseline information

- Marine Life
- Birds and Bats
- Seafloor Disturbance
- Sound
- Electromagnetic Fields (EMF)

Gulf of Maine Studies Fact Sheet



NOTE: This is a draft discussion document, and the dates of proposed meetings and planning/leasing milestones are all tentative.



Planned Engagement

Gulf of Maine Engagement Approach

Moving from the Request for Interest to Wind Energy Area Designation



NOTE: This is a draft discussion document, and the dates of proposed meetings and planning/leasing milestones are all tentative.



Gulf of Maine Commercial Leasing Milestones

Milestone*	Action	Target Date**
Task Force Meeting	Hold virtual meeting	May 19, 2022
Publish Request for Interest	Publish RFI <i>45-Day Comment Period</i>	Q3 2022
Publish Call for Information & Nominations	Publish Call <i>45-Day Comment Period</i>	Q1 2023
Area Identification	Designate Wind Energy Areas (WEAs)	Q3 2023
Lease Sale	Proposed Sale Notice (PSN)	Q4 2023
	Final Sale Notice (FSN)	Q2 2024
	Hold auction	Q3 2024

* Task Forces are incredibly valuable tools in the leasing process and **several meetings** can be expected, likely to be scheduled around significant process milestones.

** Dates of planning/leasing milestones are all tentative.



Bureau of Ocean Energy
Management

BOEM.gov



zachary.jylkka@boem.gov | (978) 491-7732



New England Wind

Massachusetts Fisheries Working Group

Erik Peckar- GM Vineyard Power

May 24, 2022



New England Wind

Federal Permitting

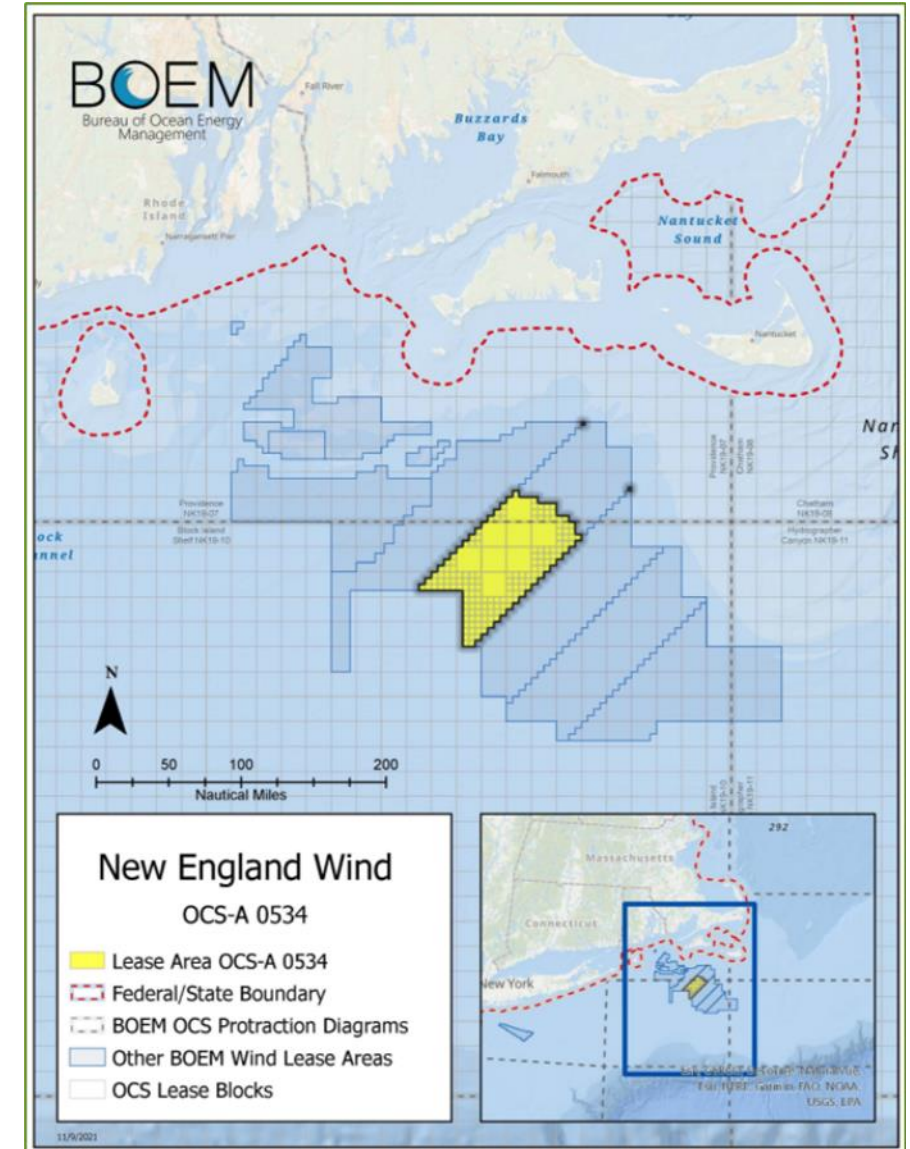
New England Wind COP

New England Wind consists of two phases.

- Phase 1: Located in the northern portion of the lease area, includes Park City Wind (804 MW).
- Phase 2: Southwestern portion of the lease area and includes Commonwealth Wind (1,232 MW).

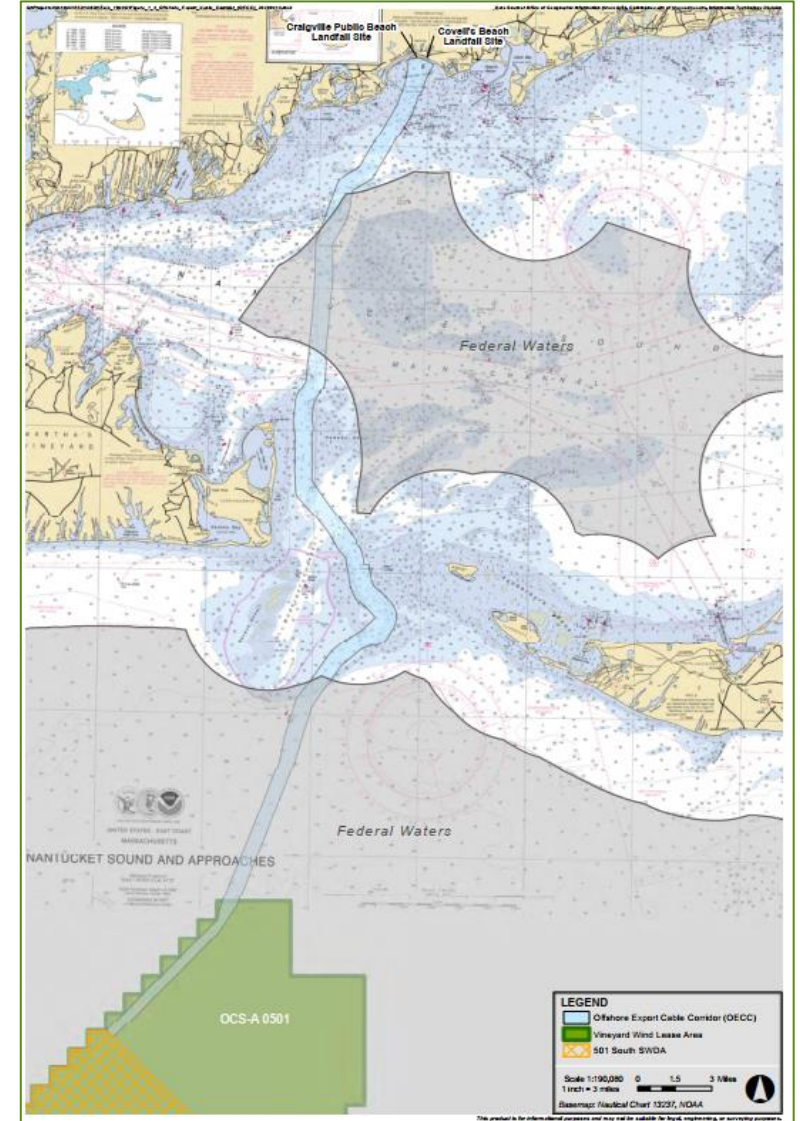
Recent Public Comment period occurred Nov – Dec 2021

Completed Steps	Pending Steps
COP received (July 2, 2020)	Scoping report published (pending)
NOI published (June 30, 2021; BOEM-2021-0047)	Draft EIS published (pending)
Scoping/comment period ends (July 30, 2021)	Public comment period for the Draft EIS ends (pending)
Notice for additional scoping published (November 22, 2021; BOEM-2021-0047)	Final EIS published (pending)



Massachusetts State Permitting

- New England Wind 1 Connector
 - Scope of the review: New England Wind's Phase 1 Project (Park City Wind) offshore export cable located in state waters and onshore infrastructure in Massachusetts
- MA Environmental Policy Act (MEPA)
 - MEPA certificate Obtained Q1 2022
- Permitting progressing at the state, regional, and local levels
- Energy Facilities Siting Board review continuing
 - EFSB petition filed May 28, 2020
 - Docket #EFSB 20-01



Environmental Activities

Park City Wind Environmental and Fisheries Research

- UConn Marine Sciences: Fisheries research conducted as part of the Connecticut Initiative on Environmental Research of Offshore Wind
 - Status: Contract Finalization
- Mystic Aquarium: Protected marine species research
 - Status: Contract finalization

Acoustic Telemetry Study for High Migratory Species

- Partnership with the New England Aquarium, offshore wind developers, and recreational fishermen to document high migratory species presence across the MA and RI/MA Wind Energy Areas
- Status: Contract finalization

Channeled Whelk Study

- Partnership with SMAST to support a baseline study focused on the age of maturity and fecundity of channeled whelks at three sample locations in Massachusetts waters
- Status: Contract finalization



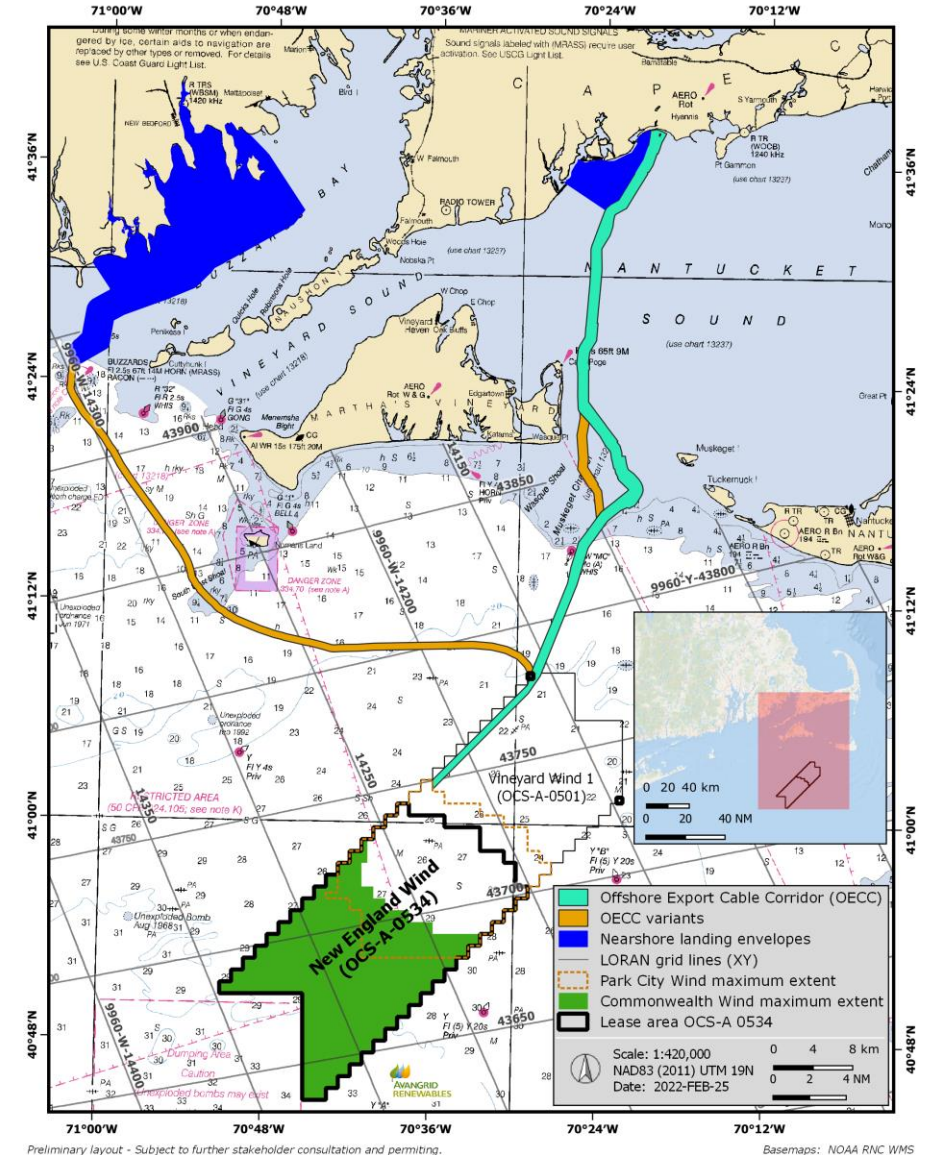
Ongoing Surveys

Fisheries Surveys

- Bottom Trawl – On Hold - Permitting
- Drop Camera- Completed - May

G&G

- Geophysical- State waters/ Buzzards Bay
 - 2-3 vessels
 - Expected April-June- Currently Delayed
- Geotechnical- 534 lease area
 - 2 Survey Vessels- Regulus and Explorer
 - Expected June- September- On Schedule mobilization June 1st
 - 2 scout vessels (Mister Marco and Barbara Ann) – On schedule this week
- Geotechnical- nearshore MA State waters- Nearshore Barnstable
 - 1 vessel – two weeks - On schedule this week



Thank you

caela.howard@avangrid.com
617-999-3882
Fisheries Liaison

john.harker@avangrid.com
Lead Fisheries-Outreach Coordinator



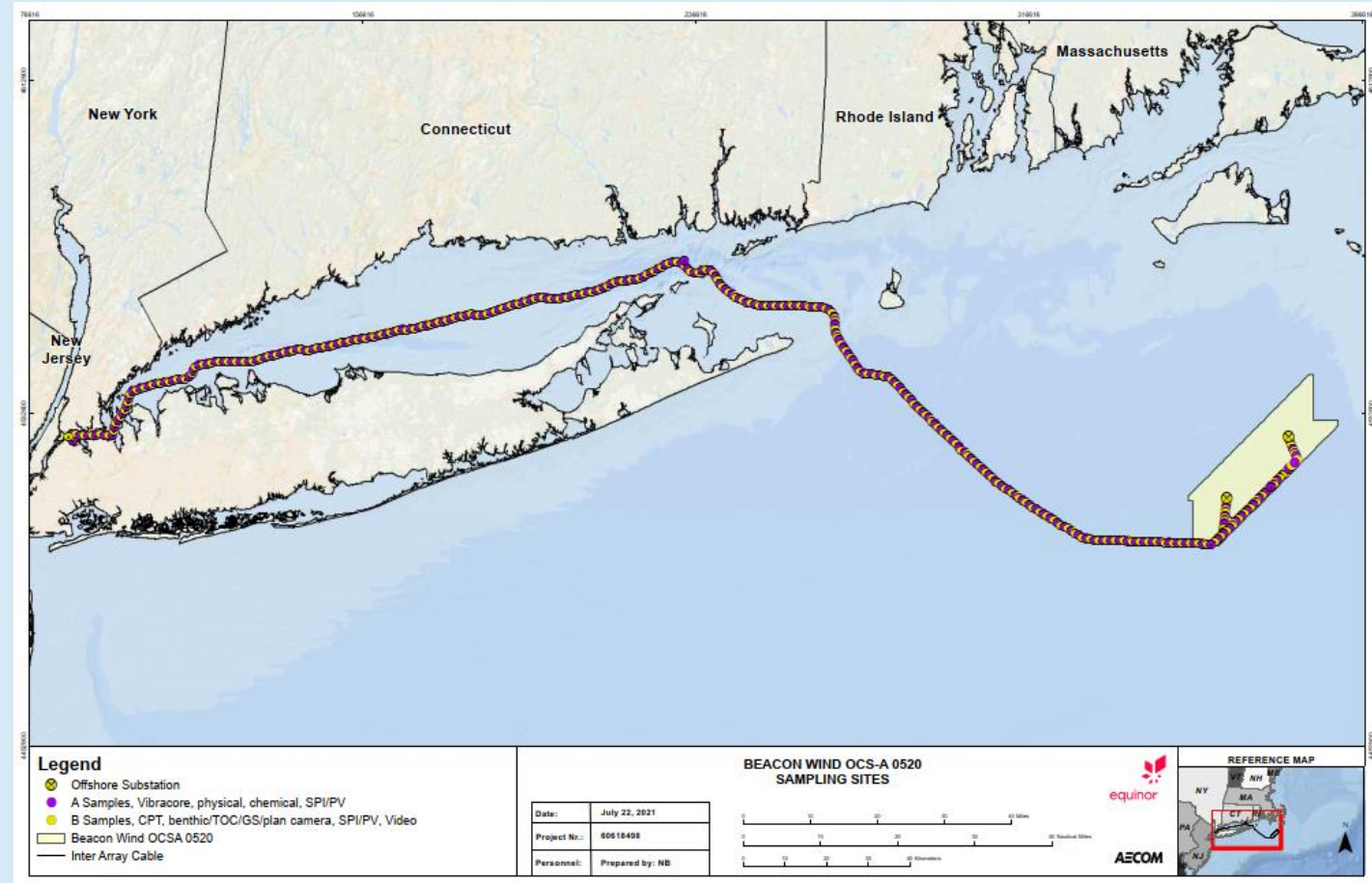
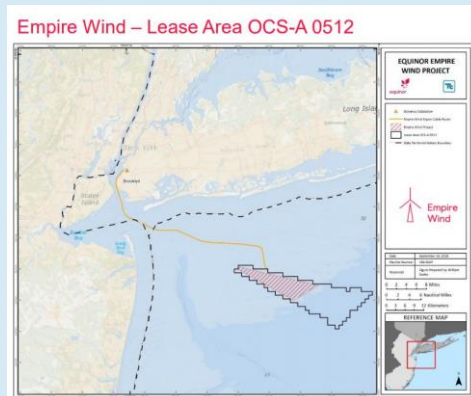
Beacon Wind

Fisheries Working Group
May 24, 2022



Beacon Wind May 2022 Highlights

- Odyssey ROV Inspection Survey
- Beacon Wind buoy maintenance
- Beacon Surveys to be completed May 2022
- Dina Polaris lost Seabed Frame
- Dina Polaris moving to New York's Empire Wind.



Beacon Wind

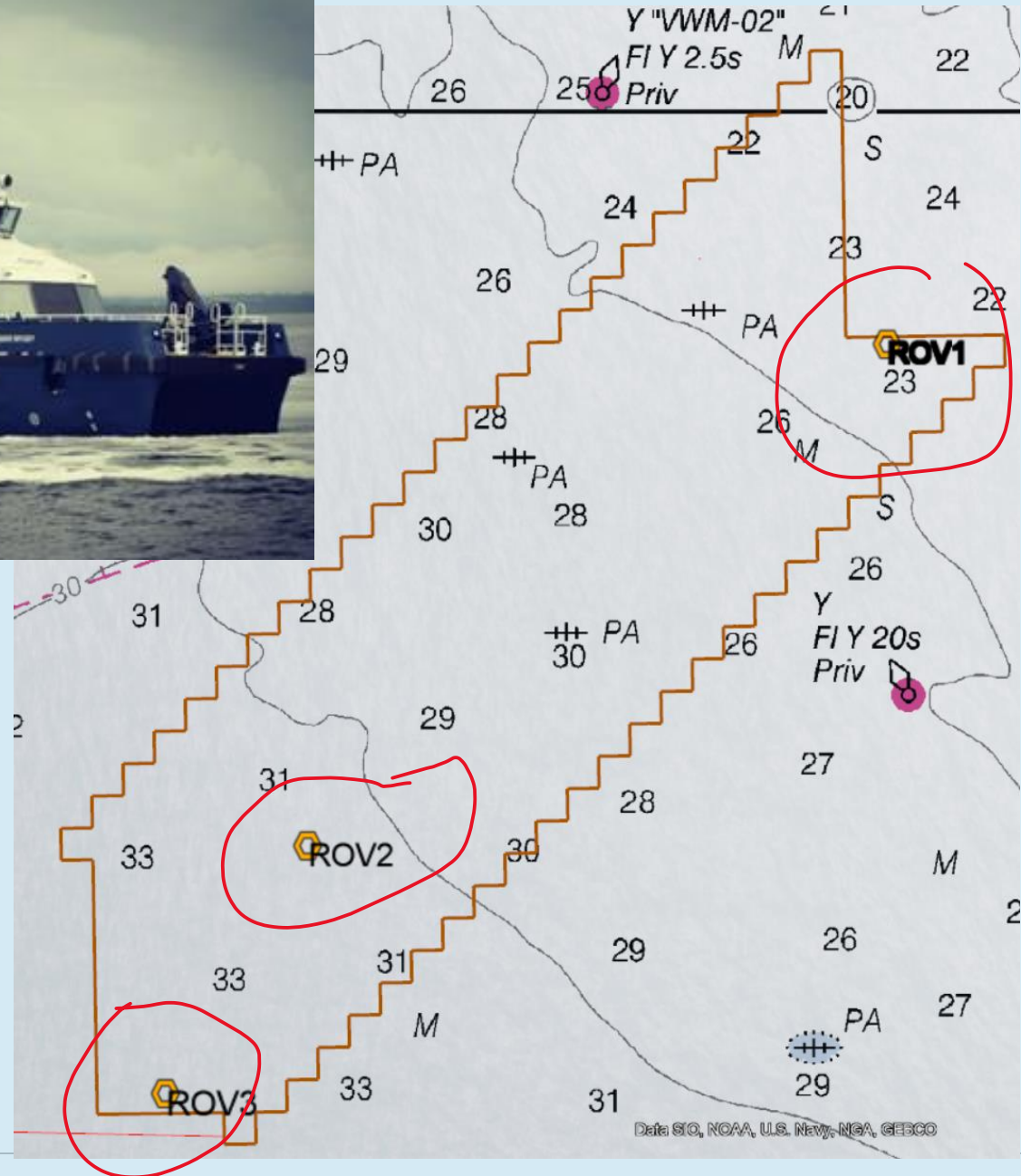
WindServe Marine's, WindServe Odyssey, will be conducting ROV inspection surveys in the Beacon Wind lease with an estimated start date May 18, 2022 to estimated completion date of May 27, 2022 operating 24 hours.

ROV inspection specifically operating at the below coordinates and are represented by ROV 1, ROV 2 & ROV 3

40° 55.286'N, 070°20.961'W
(northeast end of lease)

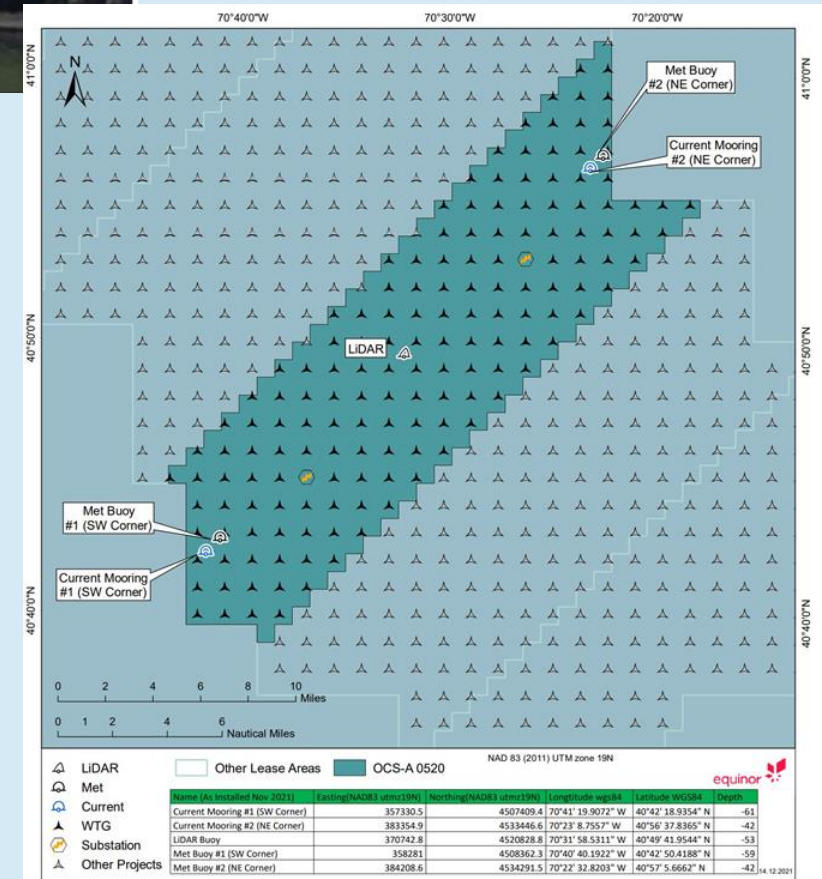
40° 45.079'N, 070° 36.546' W (middle southern part of lease)

40° 40.024'N, 070° 40.361' W
(southwest end of lease)



Beacon Wind

- MetOcean Science & Technology, RPS, will be conducting Beacon Wind MetOcean buoy operations with an estimated start date May 23, 2022 and estimated completion date June 6, 2022 in the
- This work includes maintenance and servicing meteorology equipment in the field and towing buoys to shore for maintenance and subsequent re-deployment
- Offshore work and towing will be conducted by the Berto L. Miller, MMSI 33845400

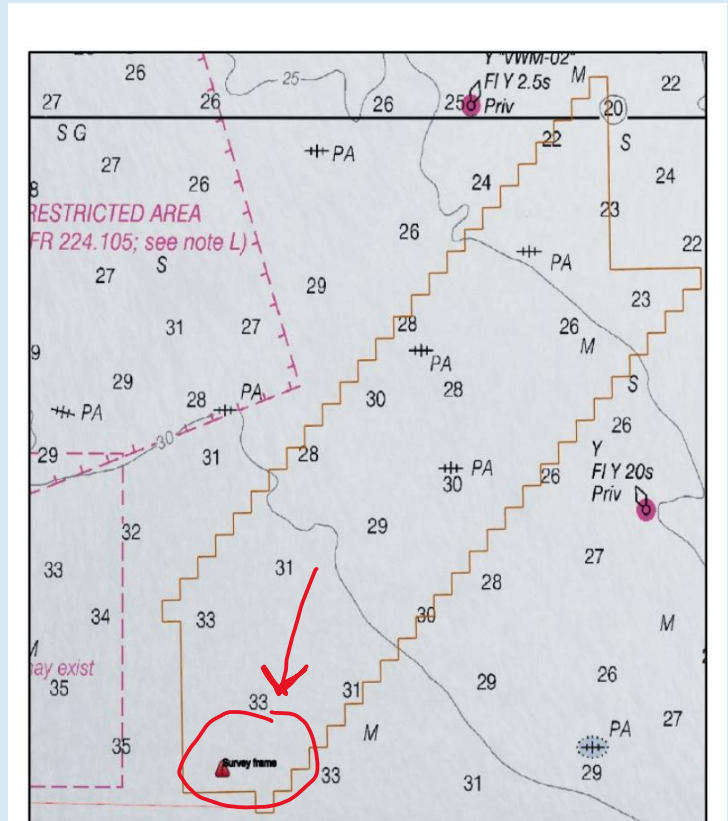
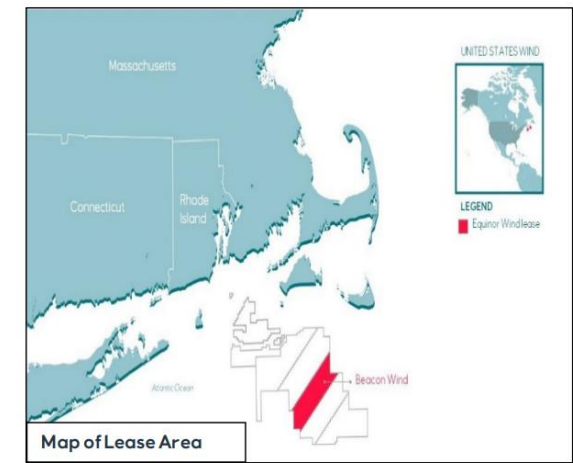


Beacon Wind

Lost Dina Polaris SBF details:

- Located in the Beacon Wind lease area
- Coordinates: 40° 40' 01.412" N (40.667059) – 70° 40' 21.624" W (-70.667190)
- The seabed frame is 2.1 x 2.1 x 2.5 m in size
- Weight: 22 metric tons
- Salvage operations currently underway

Figure 1: Photograph of Seabed Frame





equinor

SHAPING THE FUTURE OF ENERGY

Thank you for your attention. Questions?

Elizabeth Marchetti
EMARC@equinor.com

© Equinor ASA

This presentation, including the contents and arrangement of the contents of each individual page or the collection of the pages, is owned by Equinor. Copyright to all material including, but not limited to, written material, photographs, drawings, images, tables and data remains the property of Equinor. All rights reserved. Any other use, reproduction, translation, adaption, arrangement, alteration, distribution or storage of this presentation, in whole or in part, without the prior written permission of Equinor is prohibited. The information contained in this presentation may not be accurate, up to date or applicable to the circumstances of any particular case, despite our efforts. Equinor cannot accept any liability for any inaccuracies or omissions.



MAYFLOWER WIND

Project Update

Presented to

MA EEA Fisheries Working Group on Offshore Wind Energy

Presented by

Joel Southall, Fisheries Liaison Officer, Mayflower Wind

May 24, 2022

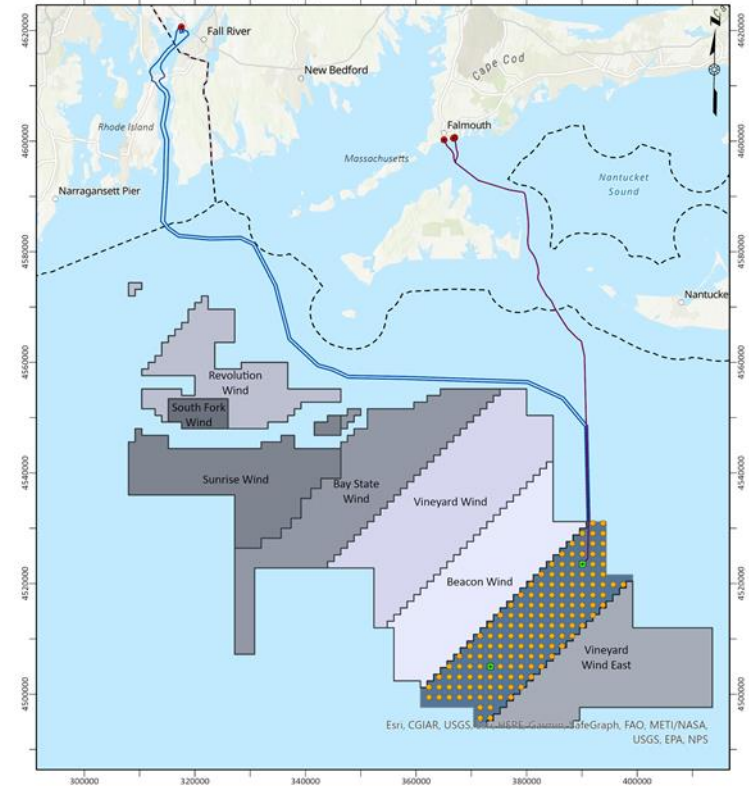
Mayflower Wind Project Overview

Points of Interconnection

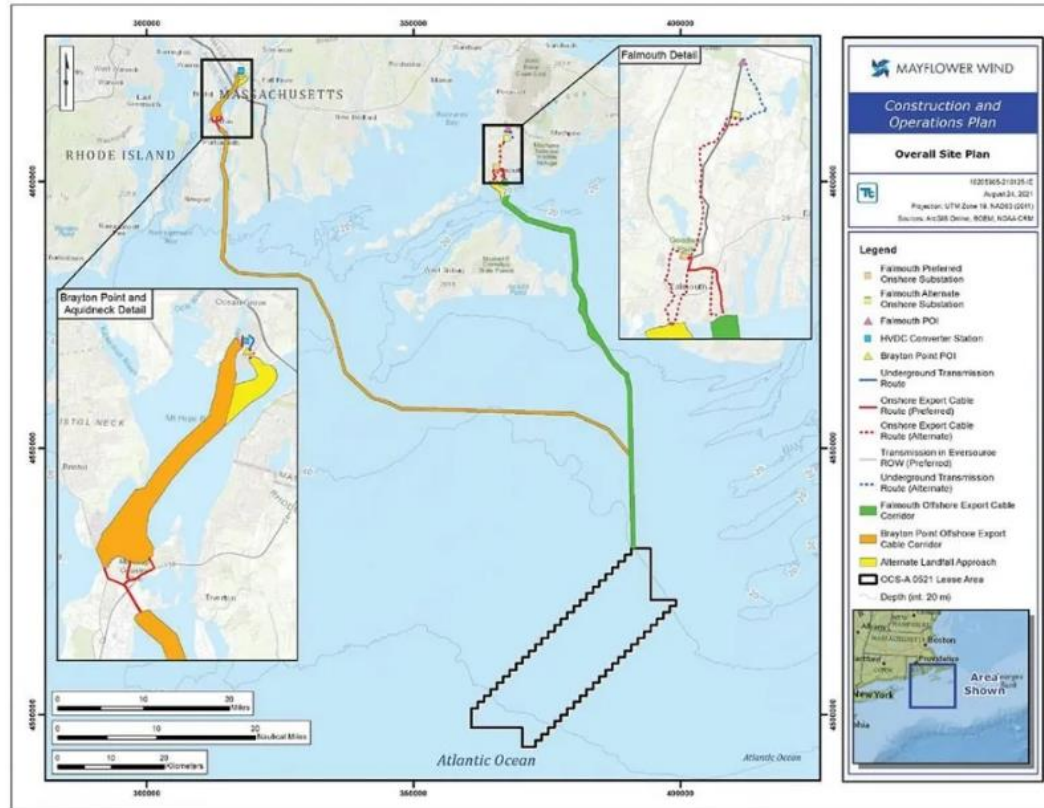
- Falmouth, MA
- Brayton Point, Somerset MA

Lease OCS-A 0521

- 127,388 acres
- Up to 149 positions with up to 147 wind turbine generators (WTG)/ and 5 offshore substation platform (OSP) positions within the lease area
- 1nm x 1nm spacing



Mayflower Wind Project Overview



Project Progress



Mayflower Wind

✕ 🔍 🎤

🗺️ 📱 🔔 👤



MAYFLOWER WIND

The Future of Clean Energy is Here

VIRTUAL TOUR OF THE SOUTHCOAST, MASSACHUSETTS PROJECT

Wednesday, May 4
6:30 – 7:30 PM





Kelsey Perry

▶ ⏮ 🔊 1:29 / 58:59

⏸ ⌂ ⌵ 🔧

Ongoing Geotechnical Sampling

mayflowerwind.com > Our Commitment > Mariners

Mayflower Wind G&G Surveys - Vessel Operating Schedule

	May 15-21	May 22-28	May 29-June 4
Mt. Hope Bay	N/A	N/A	N/A
Upper Sakonnet	N/A	N/A	N/A
Lower Sakonnet	N/A	N/A	N/A
Offshore - RI State Waters	N/A	N/A	N/A
Offshore - Federal Waters	N/A	N/A	N/A
Mayflower Wind Lease Area	Regulus	Regulus	Regulus / Fugro Explorer

Vessel activity may also be followed at [marinetraffic.com](https://www.marinetraffic.com)



Deep Water | Vessel: Regulus

Water Depths >~12m

LOA: 272'

Call Sign: WDG8927

Phone: 985-722-4420

Vessel Photograph	Vessel Contact Details	
	Vessel Name / Call Sign	M/V Fugro Explorer / 3FEV9
	Telephone Bridge	+1 713 489 3204
	Telephone Master	+1 713 369 4472
	Satellite Phone	+881-641-470-351
	Telephone Site Manager	+1 713-369-4472
	Email	bridge@epr.fugro.com
	Fugro 24 hr. incident reporting	+ 1-888-333-4577

Ørsted Offshore North America

Northeast Program Update



MA Fisheries Working Group
Meeting on Offshore Wind
May, 2022

Orsted Northeast Program 50/50 JV with Eversource

South Fork Wind

- Lease Area OCS-A 0517
- Deliver power to the East Hampton, NY
- NY Article VII approved March 2021
- COP Approval received January 18, 2022
- Onshore construction commenced

Revolution Wind

- Lease Area OCS-A 0486
- Interconnect to the existing Davisville Substation, RI
- RI EFSB Hearings underway
- RI CRMC and RI DEM permit applications under review
- DEIS September 2022, FEIS June 2023

Sunrise Wind

- Lease Area OCS-A 0487
- Proposed interconnection at Holbrook Substation, NY
- NY Article VII Settlement meetings underway
- DEIS October 2022, FEIS July 2023



Ongoing and upcoming fisheries monitoring surveys

South Fork Wind

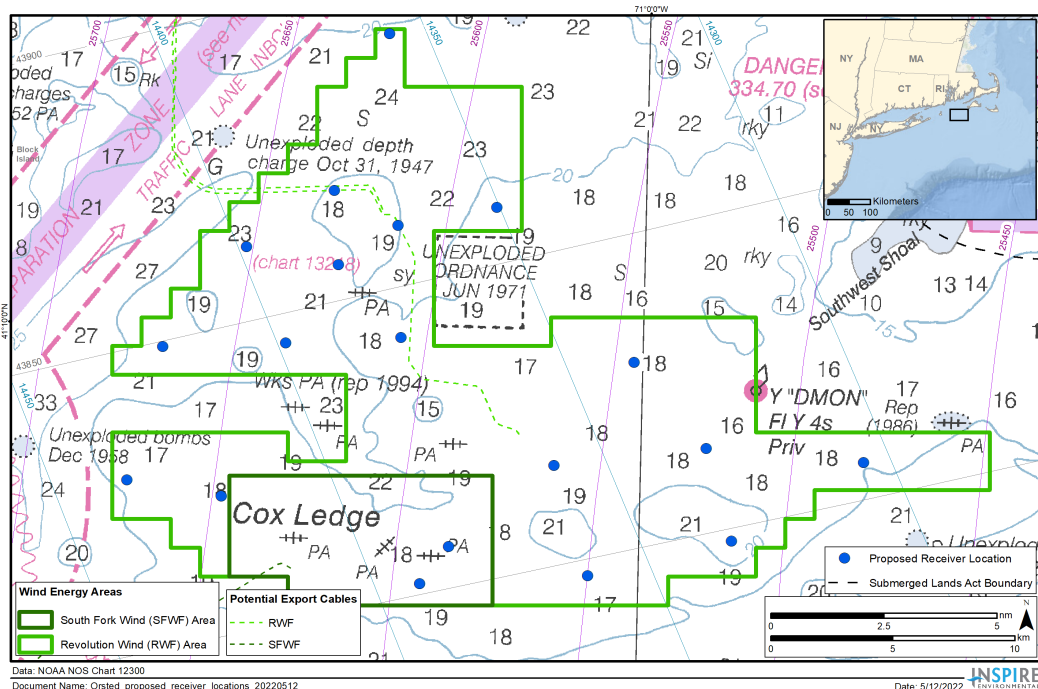
- Monthly beam trawl survey: ongoing
- Bi-monthly gillnet survey: ongoing
- Bi-monthly ventless lobster pot survey: ongoing
- Monthly fish pot survey: resumes June 2022
- Export Cable Trawl Survey: Two trips completed
- Export Cable Telemetry: 43 receivers were deployed in 2021. Receivers downloaded in April 2022.

Sunrise Wind

- Acoustic telemetry study along the export cable
- The study will begin in June/July 2022 and continue through 2027

Cross-Project

- Highly Migratory Species acoustic telemetry study: receivers deployed in Revolution Wind and South Fork Wind



Geophysical: 3D UHRS Survey

- **Vessel:** Deep Helder
- **Purpose:** Subsurface boulder survey
- **Area:** Primarily REV and SFW with small scope in SRW
- **Start date:** 5/5/22
- **Duration:** 6-10 weeks, 24-hour operations
- **Equipment:** 3 sparkers and 4 receivers towed ~ 150 m behind the vessel with a ~ 20 m gear spread. Survey equipment towed ~ 2 m below the surface
- **FLO:** Yes



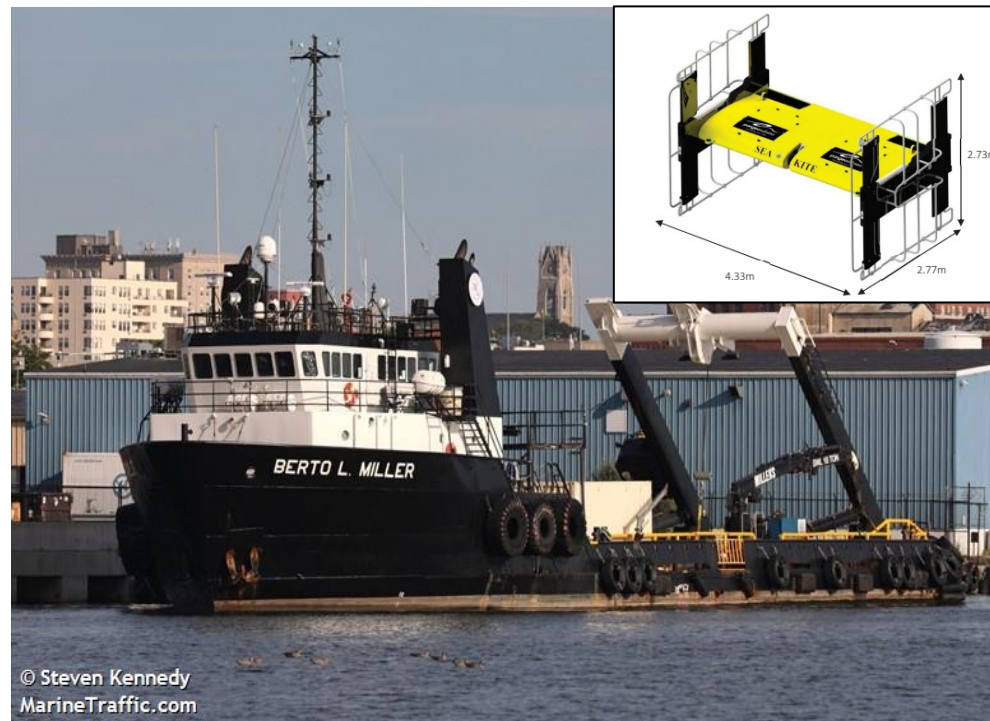
Geotechnical: pMEC Survey

- **Vessel:** Shelia Bordelon
- **Purpose:** Inspections of small unidentified targets on the seafloor
- **Area:** Revolution Wind lease area and export cable route and Sunrise Wind lease area
- **Est start date:** 6/1/22 \pm 14 days
- **Duration:** 8-12 weeks, 24-hour operations
- **Equipment:** ROV equipped with lights, cameras, a magnetometer and suction dredge
- **FLO:** Yes



Geophysical: boulder survey

- **Vessel:** Berto L Miller
- **Purpose:** Identify surface and subsurface boulders along the cable route
- **Area:** SFW and SFWECR
- **Start date:** 5/5/22
- **Duration:** 4 weeks, 24-hour operations
- **Equipment:**
 - Towed sea kite system fitted with pangeo sub bottom profiler
 - Magnetometer (towed with sea kite)
 - MBES (Multibeam Echo Sounder) fitted to survey pole below vessel
- **FLO:** Yes



Scout Vessel

- **Vessel:** Provider
- **Purpose:** Locate fishing gear ahead of survey vessels; primarily the Deep Helder but can assist other survey vessels
- **Area:** Primarily REV and SFW with small scope in SRW
- **Start date:** 5/2/22
- **Duration:** 6-10 weeks, 24-hour operations
- **Equipment:** NA
- **FLO:** NA



Mariners Briefing Update



Northeast Survey Activity Mariners Briefing:

Date of Notice: [May 19th, 2022](#)
Notice no. 227

Overview

These briefings are intended to update mariners on marine operations for Orsted survey activities. Survey operations are planned throughout the lease areas (see chart) and are expected to last several months. Currently these operations only involve the survey phase of the projects.

Mariners briefings are distributed on Mondays and Thursdays. Interested mariners can sign up for briefings on our website at: us.orsted.com/wind-projects/mariners or via email upon request through Chris Sarro (CHSAR@orsted.com).

Vessels will designate a working channel on VHF 16 daily at 0600 and 1800 to communicate work plan for the next 12 hours.

About the wind farms

Revolution, South Fork and Sunrise Wind are 50-50 joint ventures between Orsted and Eversource.

Revolution Wind is a planned offshore wind farm located 15 miles south of the Rhode Island coast.

South Fork Wind is a planned offshore wind farm located 35 miles east of Montauk Point.

Sunrise Wind is a planned offshore wind farm located 30 miles east of Montauk Point.

Project Beginning: May 2022
Project End: August 2022

Vessels

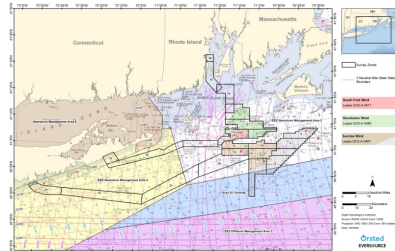


M/V Berto L. Miller
Activity Type: Boulder Survey ^
Project: South Fork Wind
Flag: USA
IMO: 8964850
4-Day Outlook: 05/20-05/22
Survey Zones: 19, 18 & 17
3-Day Projected Outlook: 05/09-05/11
Survey Zones: 19, 18 & 17
Fisheries Liaison Officer: Earle Chaples



M/V Deep Helder
Activity Type: Subsurface Boulder Survey ^
Project: Revolution & South Fork Wind
Flag: PA
IMO: 9208564
4-Day Outlook: 05/20-05/22
Survey Zones: 10 & 11
3-Day Projected Outlook: 05/23-05/25
Survey Zones: 10 & 11
Fisheries Liaison Officer: Rodey Murray
The vessel may exit the survey areas to turn and acquire survey lines.

Northeast Survey Zones



Vessel Outlook

Berto L. Miller: 17, 18 & 19
Deep Helder: 10 & 11
Provider: 10 & 11
Shelia Bordelon: Mobilizing

*Geotechnical vessels do not tow gear and use Dynamic Positions to stay on location while sampling.

^Geophysical vessels tow gear which is actively monitored at all times. Any data anomalies result in an immediate work stoppage.

For more information on our survey activities please visit
(us.orsted.com/wind-projects/mariners).

All Mariners transiting or fishing in the survey area are requested to give a wide berth to survey vessels as they may be limited in their ability to maneuver (VRAM) and towing gear out to 300 meters behind the vessel. Vessels in the vicinity of the survey vessels should operate in a manner that will not endanger the vessel or associated equipment.

At any time, vessels may seek shelter in a different zone due to weather. Wx permitting / Survey operations will be conducted 24/7

If you suffered gear damage that you believe was caused by one of our survey vessel please contact Rodney Avila (contact information below). If you want to file a gear claim use the buttons below for the gear loss claim form and instructions.

[Click here to download our gear loss claim form](#)

[Click here for instructions for our gear loss claim form](#)

Northeast Marine Affairs Team



Questions?

Rodney Avila

Corporate Fisheries Liaison

RODAV@orsted.com

(857) 332-4479

Chris Sarro

MA & RI

CHSAR@orsted.com

(857) 276-1332

Julia Prince

NY & CT

JULPR@orsted.com

(857) 348-3263

Greg DeCelles

Senior Environmental & Permitting Specialist

GREDE@orsted.com

(857) 408-4497



Thank You

Questions and Comments?

joel.southall@mayflowerwind.com

(617) 817-4682



PROJECT OVERVIEW ▾

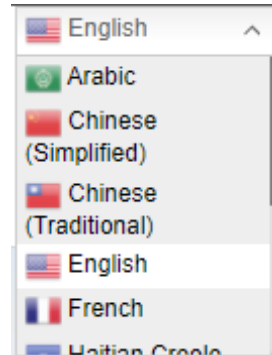
ABOUT US

OUR COMMITMENT ▾

NEWS & EVENTS ▾

WORK WITH US ▾

SIGN UP FOR UPDATES



Port Access Route Study: Approaches to Maine, New Hampshire, and Massachusetts May 24, 2022



LTJG Tom Davis
MNMPARS Project Manager
First Coast Guard District (dpw)



Homeland
Security



PARS Background

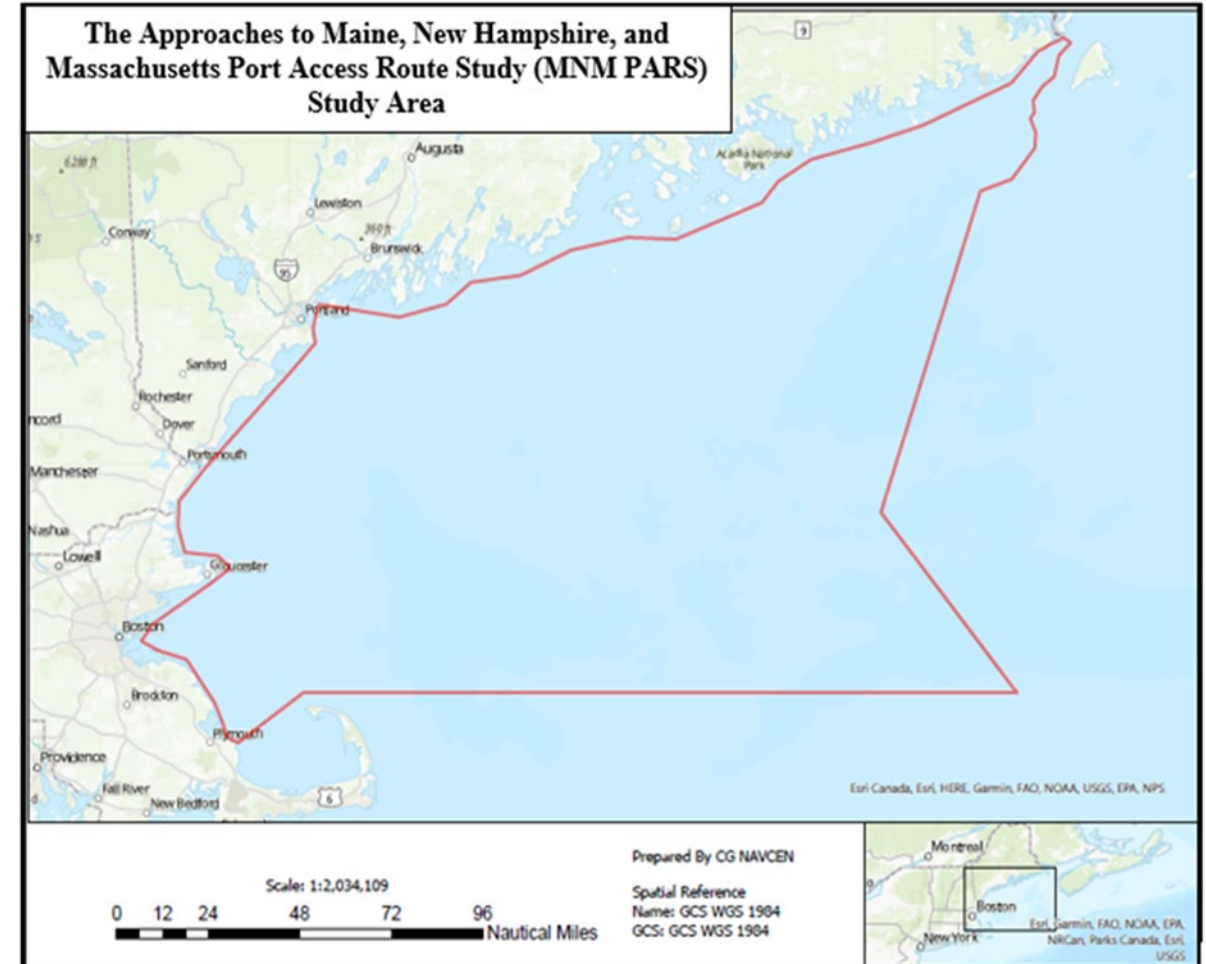
- **Ports and Waterways Safety Act**

- The Coast Guard may designate fairways and traffic separation schemes (TSS) to provide safe access routes for vessels proceeding to and from U.S. ports.
 - Paramount right of navigation over all other uses in the designated areas
 - Must conduct a PARS prior to establishing
- Other routing measures including recommended tracks, precautionary areas, and areas to be avoided may be recommended
- Study recommendations may be implemented through the rulemaking process



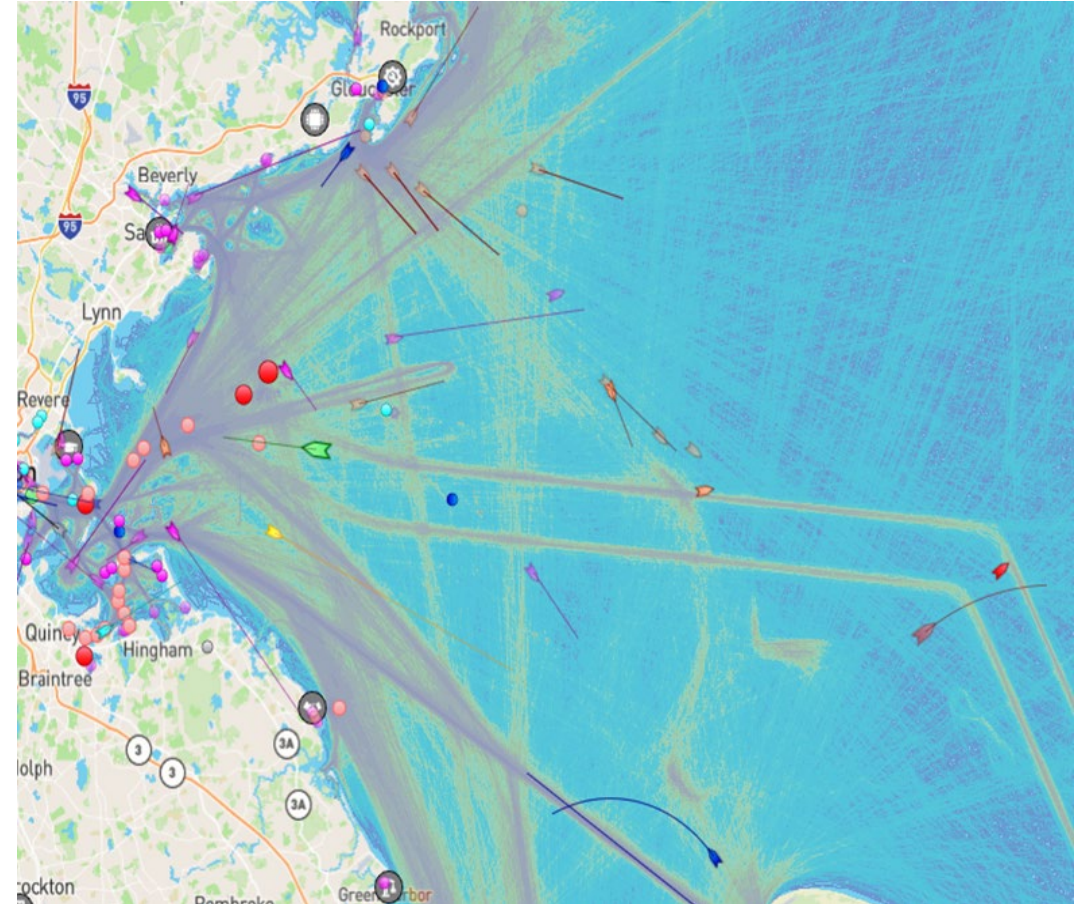
Maine, New Hampshire, and Massachusetts PARS (MNMPARS)

- Federal Register Notice (87 FR 18800; March 31st, 2022)
- 45-day comment period – Expired May 16th, 2022
- **Study Area** – Approx. 20,500 square nautical mile region including the Gulf of Maine, New Hampshire Seacoast, and Massachusetts Bay
 - Port approaches
 - International and domestic transit routes
- Determine if modifications/additional routing measures are needed to ensure navigational safety
- **Factors include:**
 - Offshore Development
 - Increased Vessel Traffic & Changing Traffic Patterns
 - Weather Conditions
 - Navigational Difficulty



PARS Process

- COMDTINST 16003.2B - Marine Planning Guidelines
 - Data Gathering
 - Existing and potential vessel traffic trends
 - Fishing activity
 - Development projects
 - Environmental and economic impacts
 - Engagement
 - Coordinate with Federal, State, Tribal, and Local agencies
 - Consider views of maritime community, environmental groups, and other stakeholders
 - **Primary Purpose** is, to the extent practicable, to reconcile the need for safe access routes with other reasonable waterway uses



Future Actions

- **Federal Register Notice (FRN)** – Notice of Inquiry and Request for Comments
 - Additional Comment Period
 - Public Meeting Schedule
- **Encourage Participation and Public Comment**
 - Impacts to navigation
 - Recommendations – provide detail
 - Additional information and data sources
- **Regulations.gov**
 - Search “USCG-2022-0047”
 - Select “Port Access Route Study”
 - Browse the docket and posted comments/documents
 - Submit remarks in future comment period

The screenshot displays the Regulations.gov interface. At the top, a search bar contains the text "USCG-2022-0047". Below the search bar are three tabs: "Dockets", "Documents", and "Comments". The "Documents" tab is selected. On the left side, there are filters for "Document Type", "Posted", "Comments Due", and "Agency". The "Document Type" filter shows "Notice (2)". The "Posted" filter shows "Last 90 Days (1)" and "Custom Dates". The "Comments Due" filter shows "Custom Dates". The "Agency" filter shows "Coast Guard (2)". The search results on the right show two documents. The first document is titled "NATIONWIDE DIFFERENTIAL GLOBAL POSITIONING SYSTEM" and is marked as "Withdrawn". The second document is titled "PORT ACCESS ROUTE STUDY: APPROACHES TO MAINE, NEW HAMPSHIRE, AND MASSACHUSETTS" and is marked as "USCG". The second document is highlighted with a yellow box. Below the search results, it says "Displaying 1 - 2 of 2 results".

www.regulations.gov

Questions

Project Manager

- **LTJG Tom Davis, First CG District, Boston, MA**
 - Thomas.S.Davis@uscg.mil
 - (617) 223-8632

Project Supervisor

- **Mark Cutter, First CG District, Boston, MA**
 - Mark.E.Cutter@uscg.mil
 - (617) 223-8442