

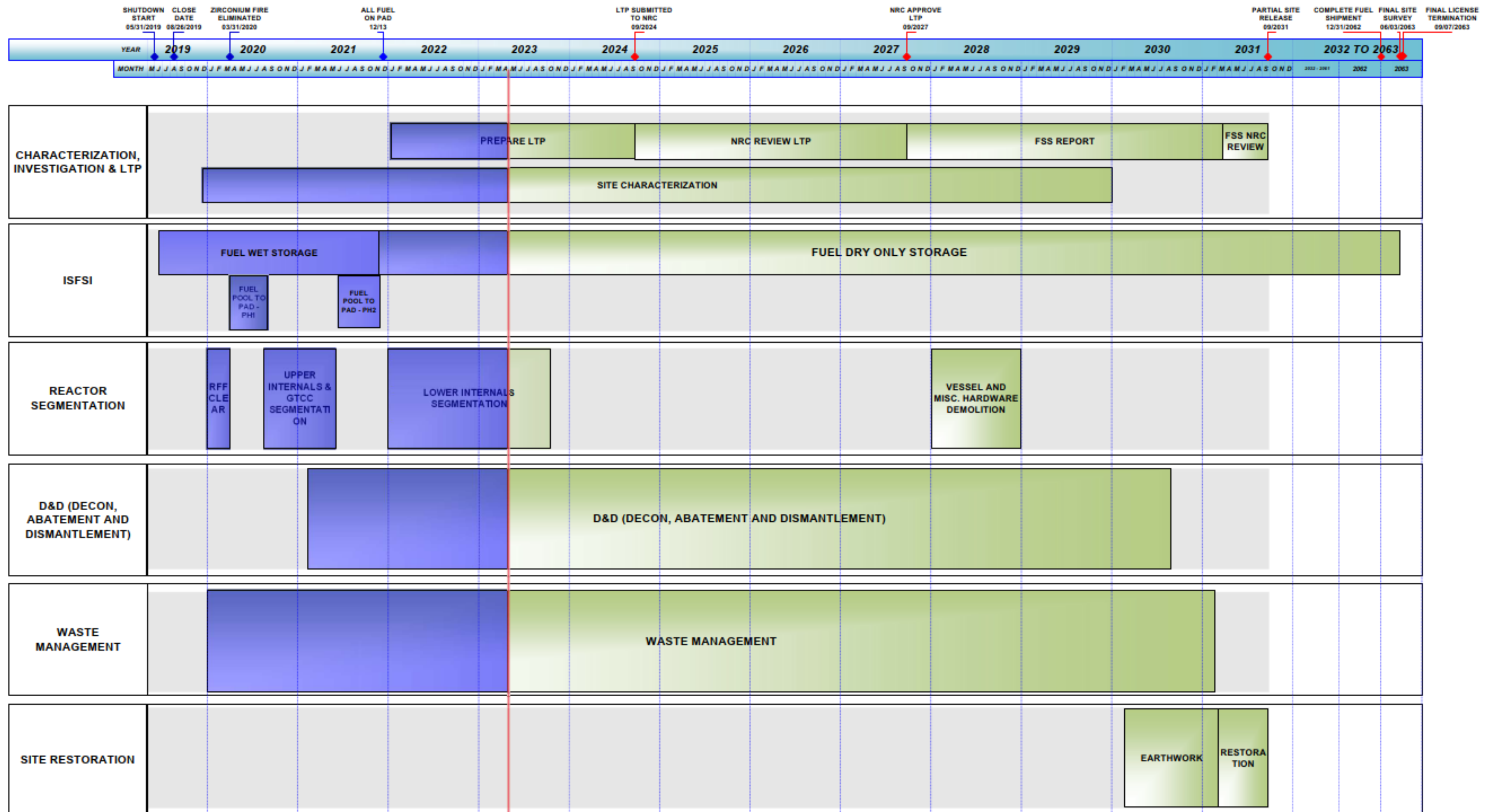


Pilgrim NDCAP Update



May 22, 2023

Draft Waterfall Chart



Schedule Impacts

4-year delay in Partial Site Release (PSR) caused by 4-year delay in reactor vessel segmentation and reactor building demolition

Drivers:

- Preserving Decommissioning Trust Fund Growth by flattening cost curves
- Reactor Pressure Vessel segmentation option evaluation based on industry lessons learned and likely innovations
- Uncertainty associated with the NPDES and Surface Water Discharge Permits modifications

Demolition - Completed

Old Main Gate

- Demolition - April Completion

Trash Compaction Facility Adjacent Wall Structure / Onsite Storage

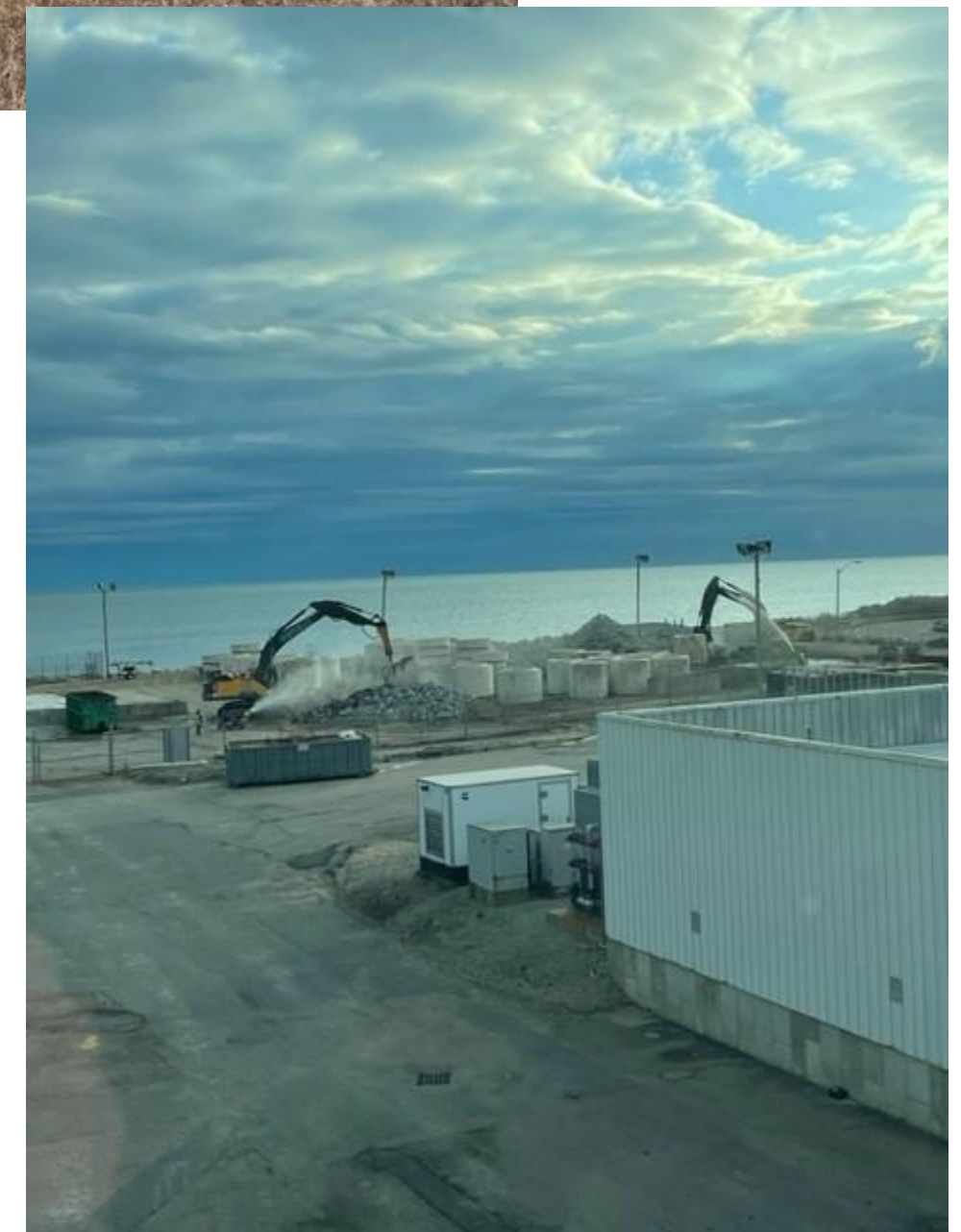
- Wall removal – April Completion
- OSSCs and Lids – May Completion

Central Alarm Station Building

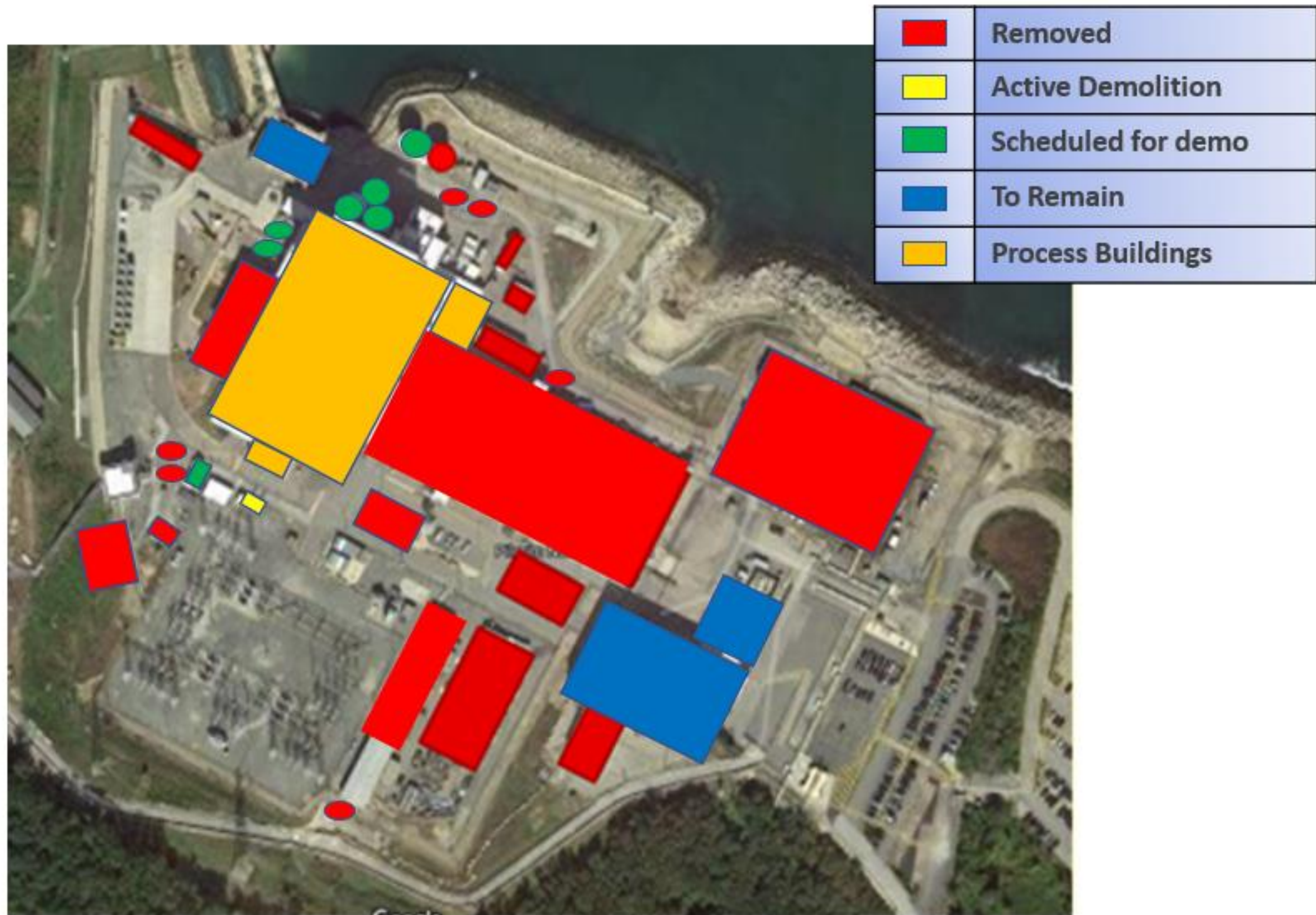
- Demolition – May Completion
- Demo to follow Old Main Gate

Safety Enhancement Program Diesel Building

- Demolition – May Completion



Demolition



Demolition - Upcoming

Security Diesel Generator

- Asbestos abatement to complete 5/25/23
- Demolition to complete 6/6/23

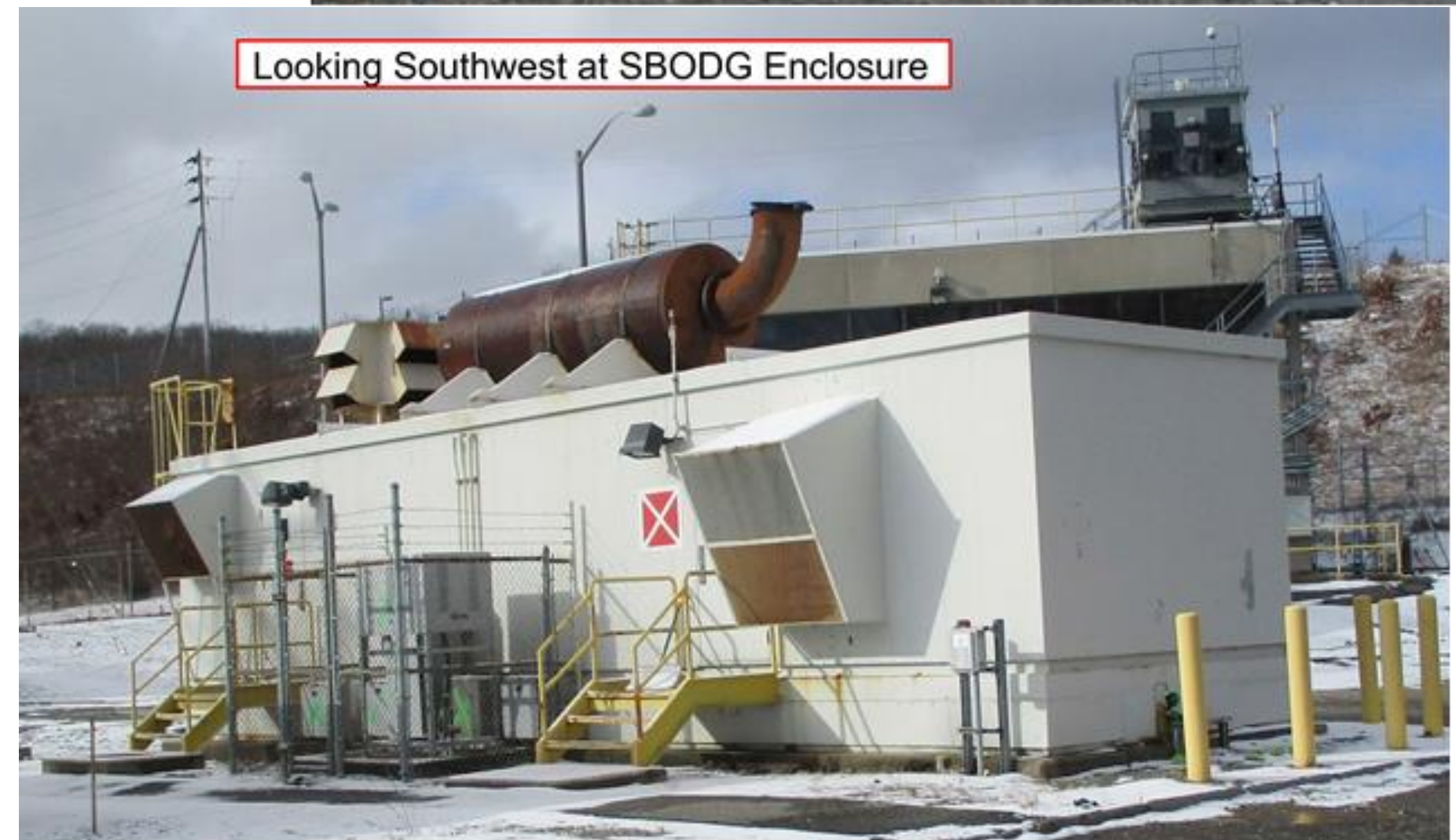
Station Blackout Diesel Generator

- Demolition to complete 6/20/23

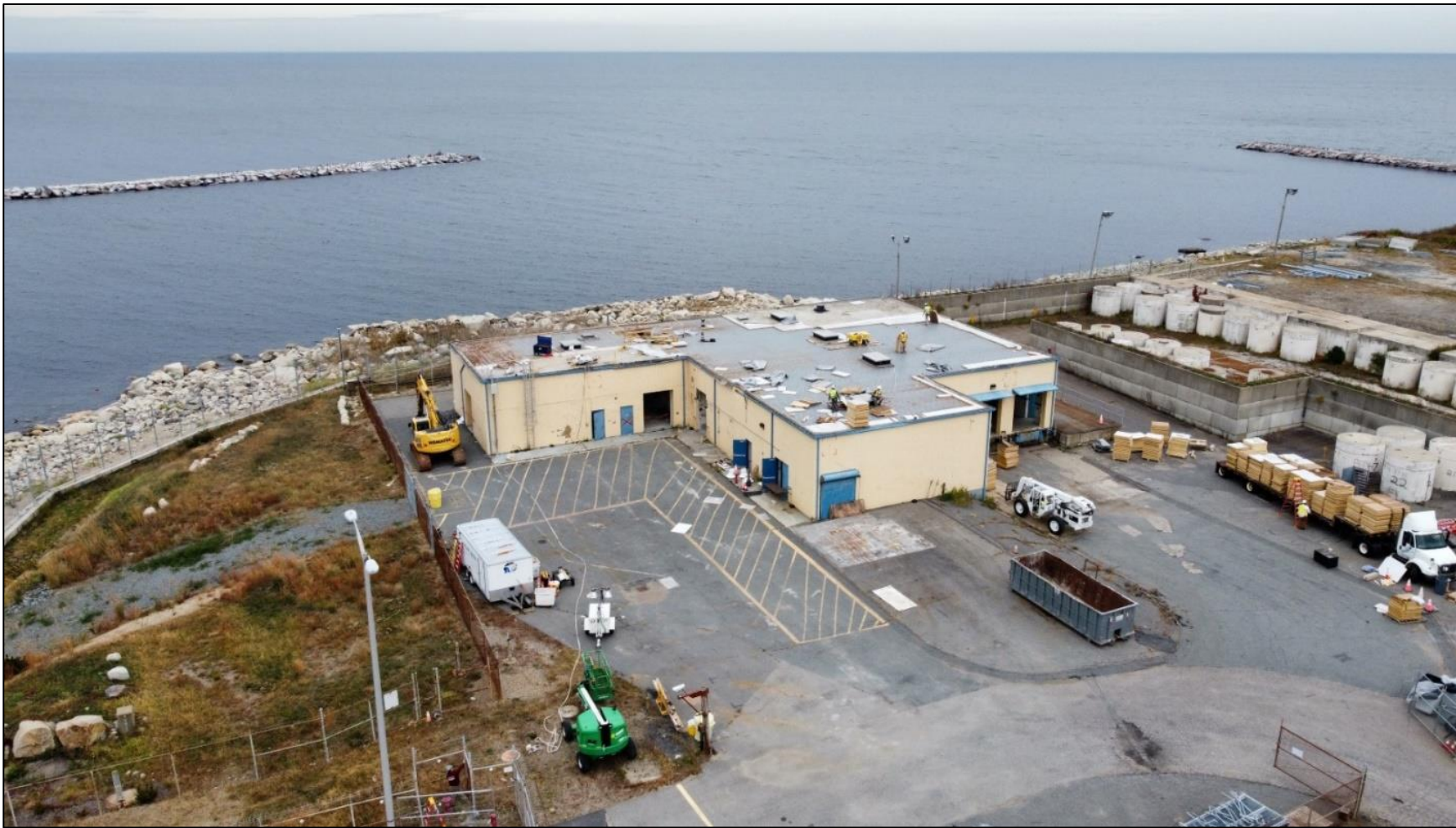
Above Ground Storage Tanks

(1 Fire Water Storage Tank, 1
Demineralized Water Storage Tank,
and 2 Condensate Storage Tanks)

- Demolition to complete 9/2023



Demolition – Environmental Focus



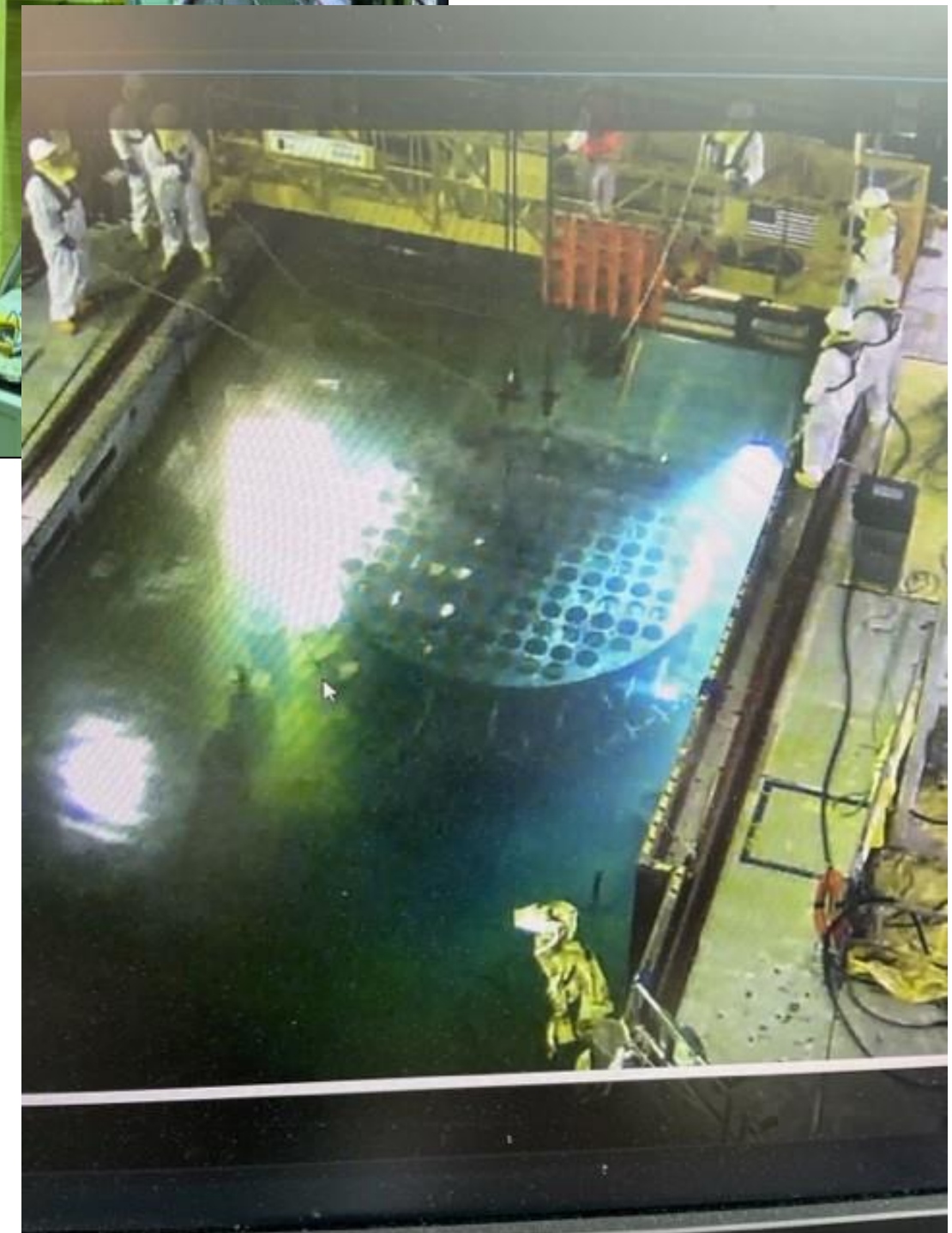
Trash Compaction Facility- Demolition

- 14,728 ft³ Non-radiological Removed and Disposed (includes Asbestos Containing Material)
- 22,140 ft³ Recycle / Reuse (Masonry, Scrap Metal, Insulation Board)
- 4,700 ft³ Radioactive waste (Roof Stone, Concrete Scabbles, Ductwork)

Reactor Internal Segmentation

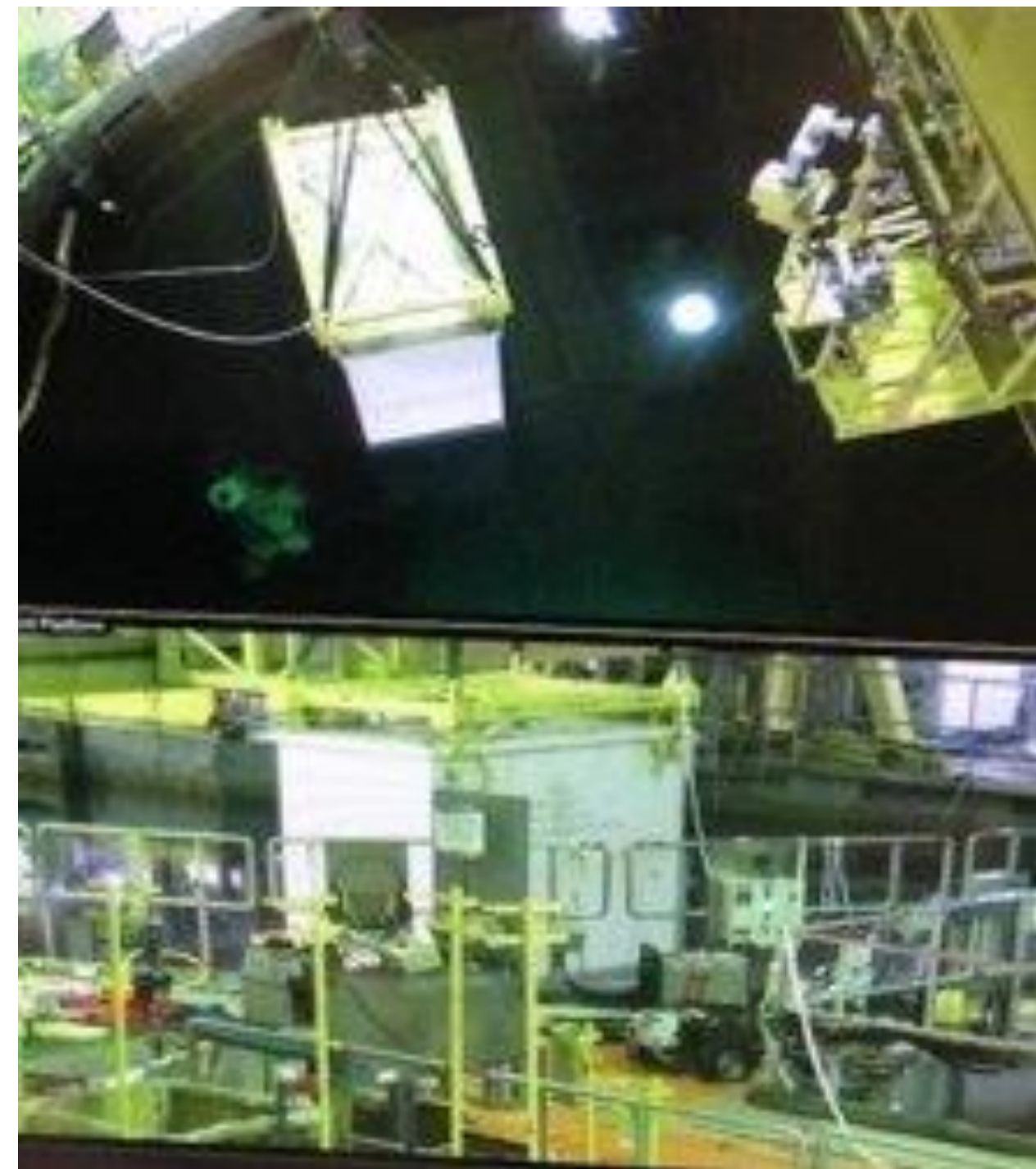
In Progress

- Lower Core Plate and Shroud Ring Removal
- B/C Waste packaging and staging
May / June 2023
- Complete B/C Waste packaging and staging
- Segment Shroud Ring
- Jet Pumps removal and packaging



Waste Management

Radioactive Waste Shipments – Completed through May 18, 2023 Thru May 12th via Transload facility (Rail) and Highway shipments approximately 48,774 ft³ total



Regulatory Affairs

Submitted Annual Radioactive Release and Radioactive Effluent Operating Reports

The calculated total body dose to the maximally exposed member of the general public from radioactive effluents and ambient radiation resulting from PNPS operations for 2022 was approximately 0.16 mrem for the year. Compared to background dose associated with Natural (310 mrem) and Man-Made (315 mrem) sources.¹

Receptor	Gaseous Effluents (mrem/yr)	Liquid Effluents (mrem/yr)	Ambient Radiation (mrem/yr)	Total (mrem/yr)
Total Body	0.000068	N/A	0.16	0.16

¹ National Council on Radiation Protection and Measurement Reports 160 and 94

Water Management

- Split Sampling with State (MassDEP and MDPH) performed on April 5th, Town of Plymouth Director of Marine and Environmental Affairs observed the evolution.
- HDI's radiological and non-radiological constituents and concentrations were consistent with information previously provided