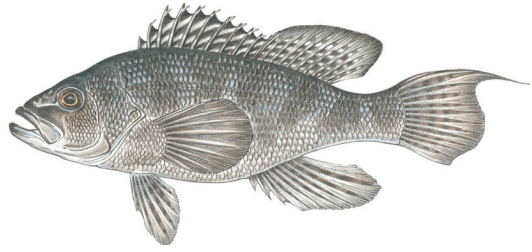




Commonwealth of Massachusetts  
**Division of Marine Fisheries**  
(617) 626-1520; [www.mass.gov/marinefisheries](http://www.mass.gov/marinefisheries)  
Size & Bag Limits for Saltwater Fish in MA Waters\*  
2021

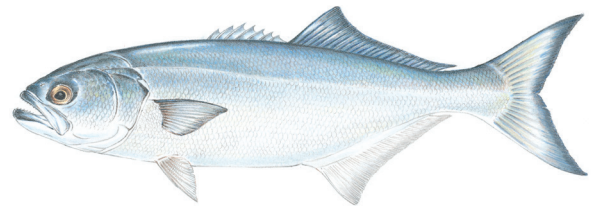


### BLACK SEA BASS



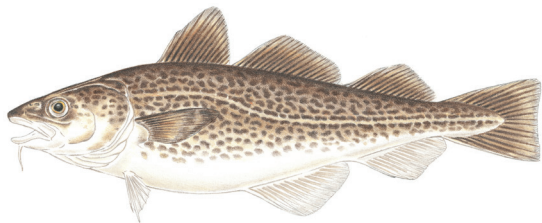
Season: May 18 - Sep 8  
Minimum Size: 15"  
Possession Limit: 5 fish

### BLUEFISH



Season: all year  
Minimum Size: no limit  
Possession Limit: 3 fish

### ATLANTIC COD\*\*



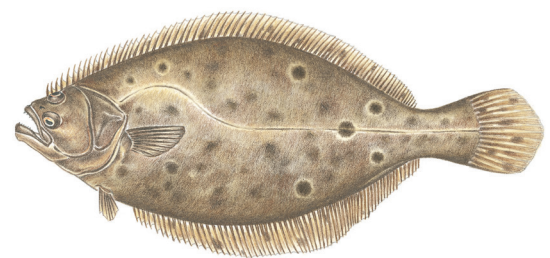
#### North of Cape Cod

Season: Apr 1 - Apr 14 ; Sep 15 - Sep 30  
Minimum Size: 21"  
Possession Limit: 1 fish

#### South of Cape Cod

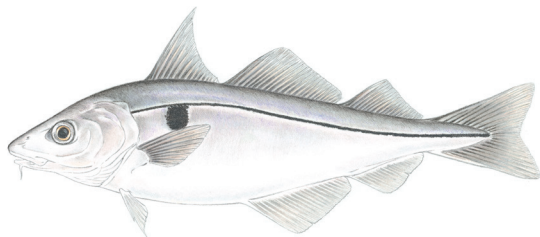
all year  
21"  
10 fish

### FLUKE (SUMMER FLOUNDER)



Season: May 23 - Oct 9  
Minimum Size: 17"  
Possession Limit: 5 fish

### HADDOCK\*\*



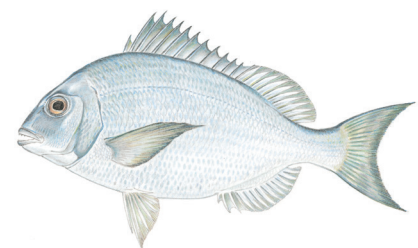
#### North of Cape Cod

Season: Jan 1 - Feb 28 ; Apr 1 - Dec 31  
Minimum Size: 17"  
Possession Limit: 15 fish

#### South of Cape Cod

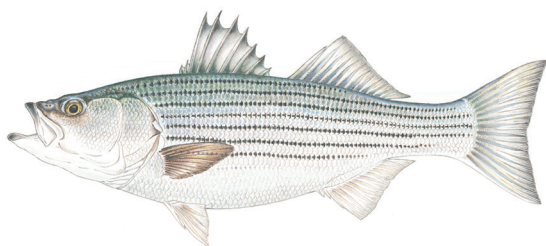
all year  
18"  
no limit

### SCUP



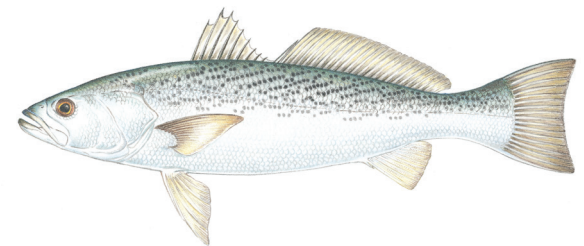
Season: all year  
Minimum Size: 9"  
Possession Limit: 30 fish per angler. Not to exceed 150 fish per vessel with 5 or more anglers onboard.

### STRIPED BASS



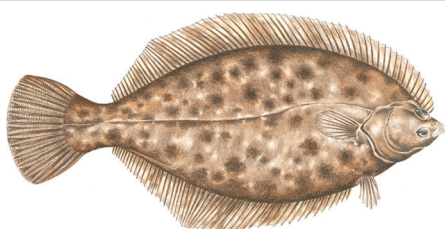
Season: all year  
Minimum Size: 28" to less than 35"  
Possession Limit: 1 fish

### WEAKFISH



Season: all year  
Minimum Size: 16"  
Possession Limit: 1 fish

### WINTER FLOUNDER



#### North of Cape Cod

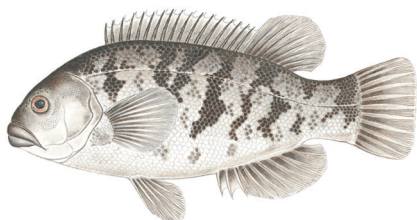
Season: all year  
Minimum Size: 12"  
Possession Limit: 8 fish

#### South 7 East of Cape Cod

Mar 1 - Dec 31  
12"  
2 fish

### TAUTOG

*When the tautog fishery is open, private anglers are subject to 10-fish maximum tautog limit for the vessel. The most restrictive limit of the per angler bag limit or per vessel maximum limit applies.*



| Season:           | Jan 1 - Mar 31 | Apr 1 - May 31 | Jun 1 - Jul 31 | Aug 1 - Oct 14 | Oct 15 - Dec 31 |
|-------------------|----------------|----------------|----------------|----------------|-----------------|
| Minimum Size:     | NA             | 16"            | 16"            | 16"            | 16"             |
| Possession Limit: | prohibited     | 3 fish         | 1 fish         | 3 fish         | 5 fish          |

\*Updated as of May 14, 2021. Visit our website for other rules: [www.mass.gov/marinefisheries](http://www.mass.gov/marinefisheries) or call 617-626-1520  
\*\*Check with NOAA Fisheries for federal rules.