

TRAIL MAP

Wompatuck State Park
172 Union Street
Hingham, MA 02043
(781) 749-7160
2012

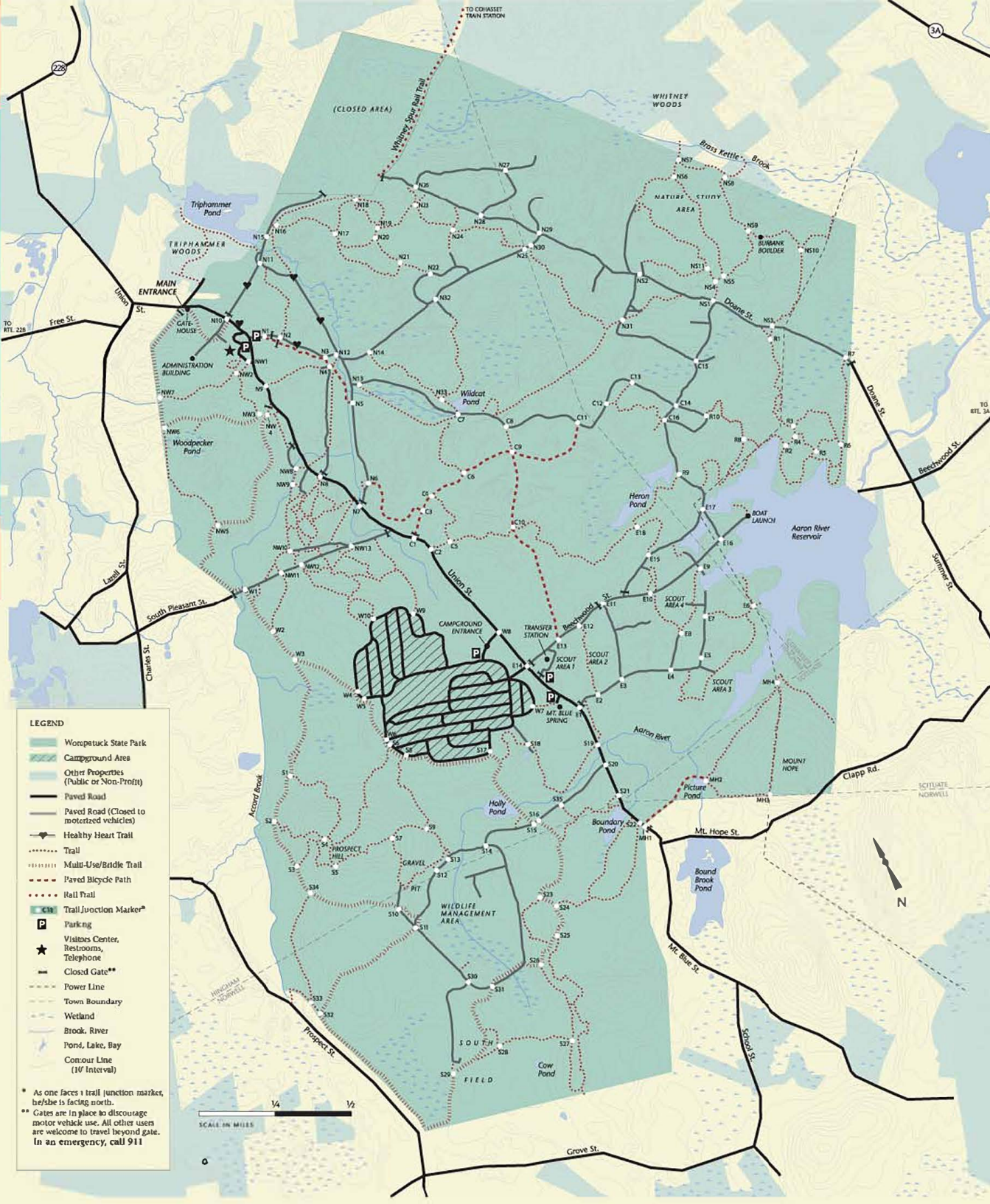
Welcome to DCR's
Wompatuck State Park

Offering attractive campsites and within a close drive to the City of Boston and Cape Cod, Wompatuck is primarily used for camping, hiking and mountain biking. It is part of the Massachusetts state park system and is managed by the Massachusetts Department of Conservation and Recreation (DCR), an agency of the Executive Office of Energy and Environmental Affairs. DCR oversees 450,000 acres of parks, forests, beaches, bike trails, waterheds, and dams. Its mission is to protect, promote, and enhance the state's natural, cultural, and recreational resources. To learn about DCR and to discover more parks and recreational opportunities within the Massachusetts state parks, visit www.mass.gov/dcr.

♥ Designated by a heart symbol, Healthy Heart Trails are pathways or trails used for hiking or walking that are easy to moderate in activity level and intended for routine use to help build a healthy heart.

TRAIL USE GUIDELINES AT WOMPATUCK

- Stay on designated trails and roads.
- Observe all posted rules and regulations.
- Off-Road Vehicle (ORV) use prohibited. Snowmobiling only permitted east of Union St.
- Be respectful of other trail users.
- Hikers: Allow bicyclists and equestrians to pass. Bicyclists: Control your bike-do not skid. Avoid startling horses and hikers—announce yourself.
- Be aware of hunting seasons, and wear blaze orange when appropriate.



LEGEND

- Wompatuck State Park
- Campground Area
- Other Properties (Public or Non-Profit)
- Paved Road
- Paved Road (Closed to motorized vehicles)
- Healthy Heart Trail
- Trail
- Multi-Use/Bridle Trail
- Paved Bicycle Path
- Rail Trail
- Trail Junction Marker*
- Parking
- Visitors Center, Restrooms, Telephone
- Star
- Closed Gate**
- Power Line
- Town Boundary
- Wetland
- Brook, River
- Pond, Lake, Bay
- Contour Line (10' Interval)

* As one faces a trail junction marker, he/she is facing north.
** Gates are in place to discourage motor vehicle use. All other users are welcome to travel beyond gate. In an emergency, call 911

SCALE IN MILES
0 1/4 1/2