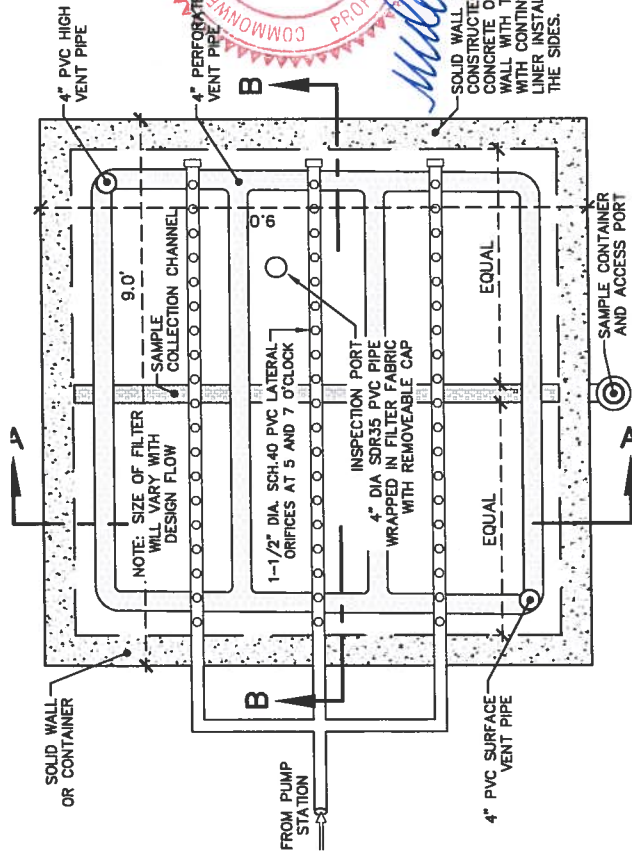
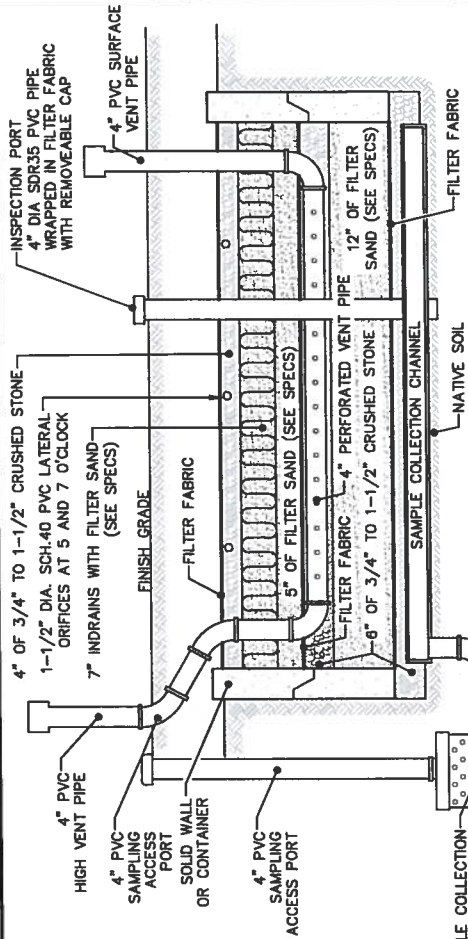


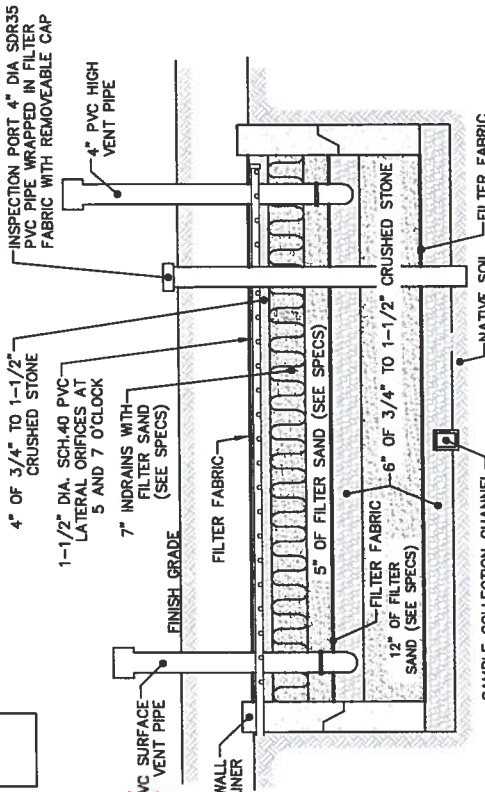
TYPICAL SYSTEM - PLAN VIEW
SCALE: 1"=20'



GPC FILTER - PLAN VIEW
SCALE: 1"=2'



GPC FILTER SECTION A-A
SCALE: 1"=2'



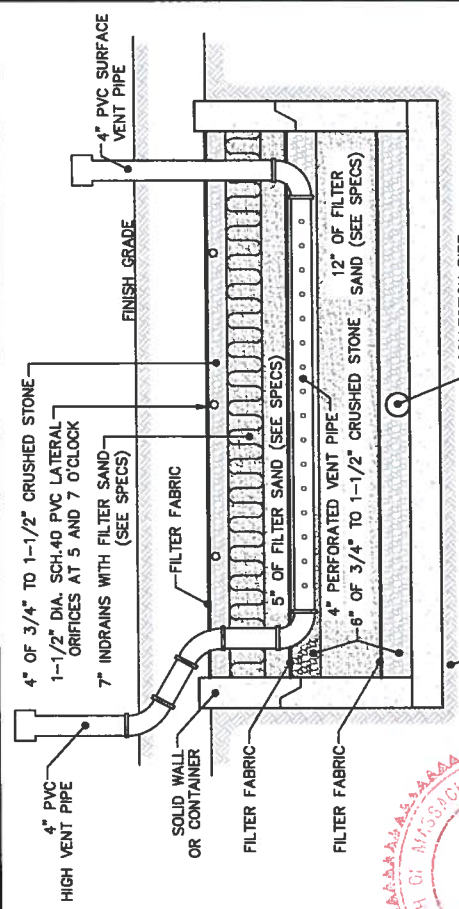
GPC FILTER SECTION B-B
SCALE: 1"=2'

COMMONWEALTH OF MASSACHUSETTS
REGISTERED PROFESSIONAL ENGINEER
MICHAEL B. MCGRATH
NO. 36813

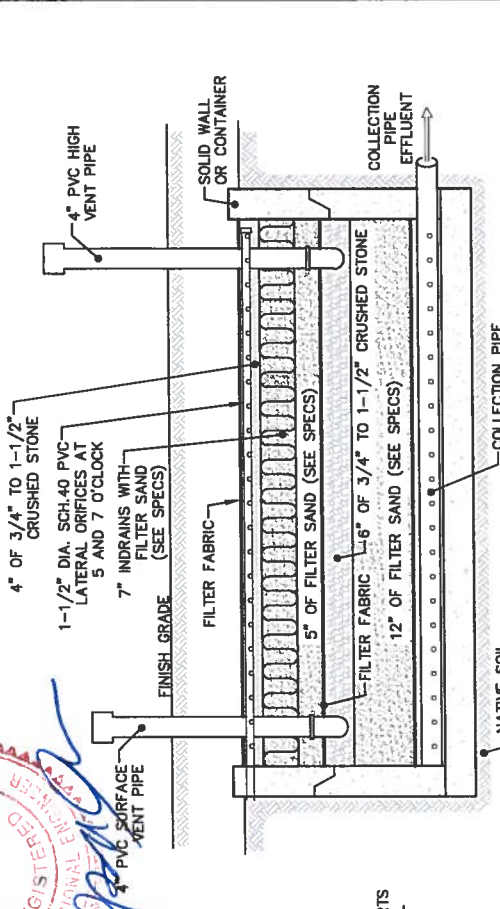
SOLID WALL TO BE CONSTRUCTED OF CONCRETE OR PLYWOOD WALL WITH TIMBER SUPPORTS WITH CONTINUOUS LANDFILL LINER INSTALLED AROUND THE SIDES.

BOTTOMLESS GPC FILTER SYSTEM

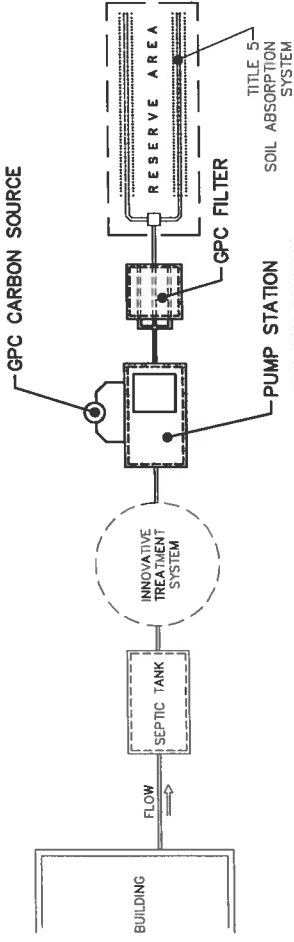
ground penetrating carbon, inc.
using natural microorganisms to clean water
205 worcester court, suite A4
falmouth, ma 02540
508-546-3664 • 600-474-7373 • FAX 508-546-9672
email: mbcgrath@boltonandmcgrath.com



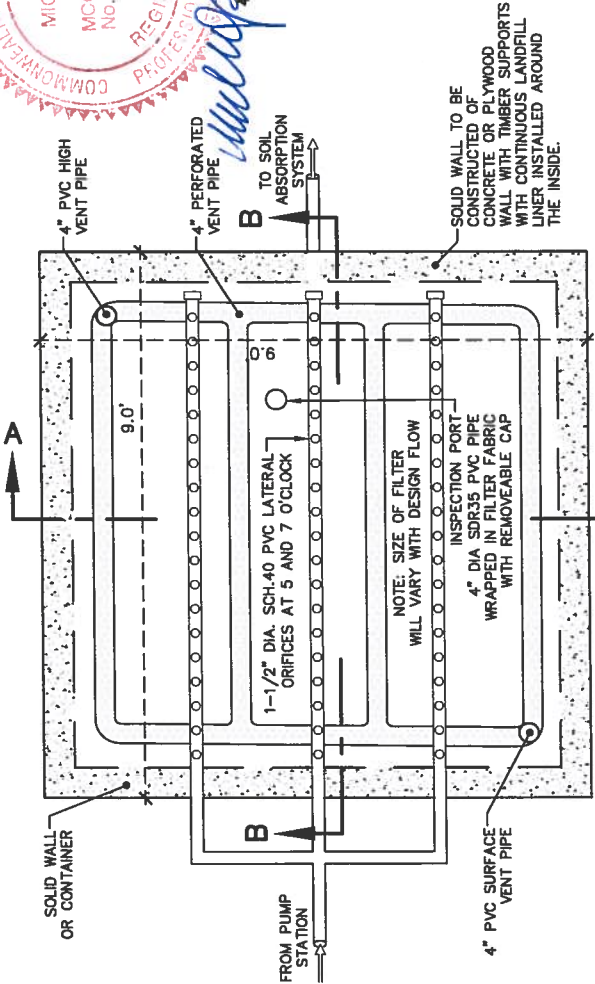
GPC FILTER SECTION A-A
SCALE: 1"=2'



GPC FILTER SECTION B-B
SCALE: 1"=2'



TYPICAL SYSTEM - PLAN VIEW
SCALE: 1"=20'



GPC FILTER - PLAN VIEW
SCALE: 1"=2'

ground penetrating carbon, inc.
using natural microorganisms to clean water
205 worcester court, suite A4
falmouth, ma. 02540
508-548-3564 • 800-874-7373 • FAX 508-548-9672
email: mmcgrath@hulmeandmcgrath.com

**GPC FILTER SYSTEM
ADDED TO AN INNOVATIVE ALTERNATIVE SEPTIC SYSTEM**