



Ashmere Lake

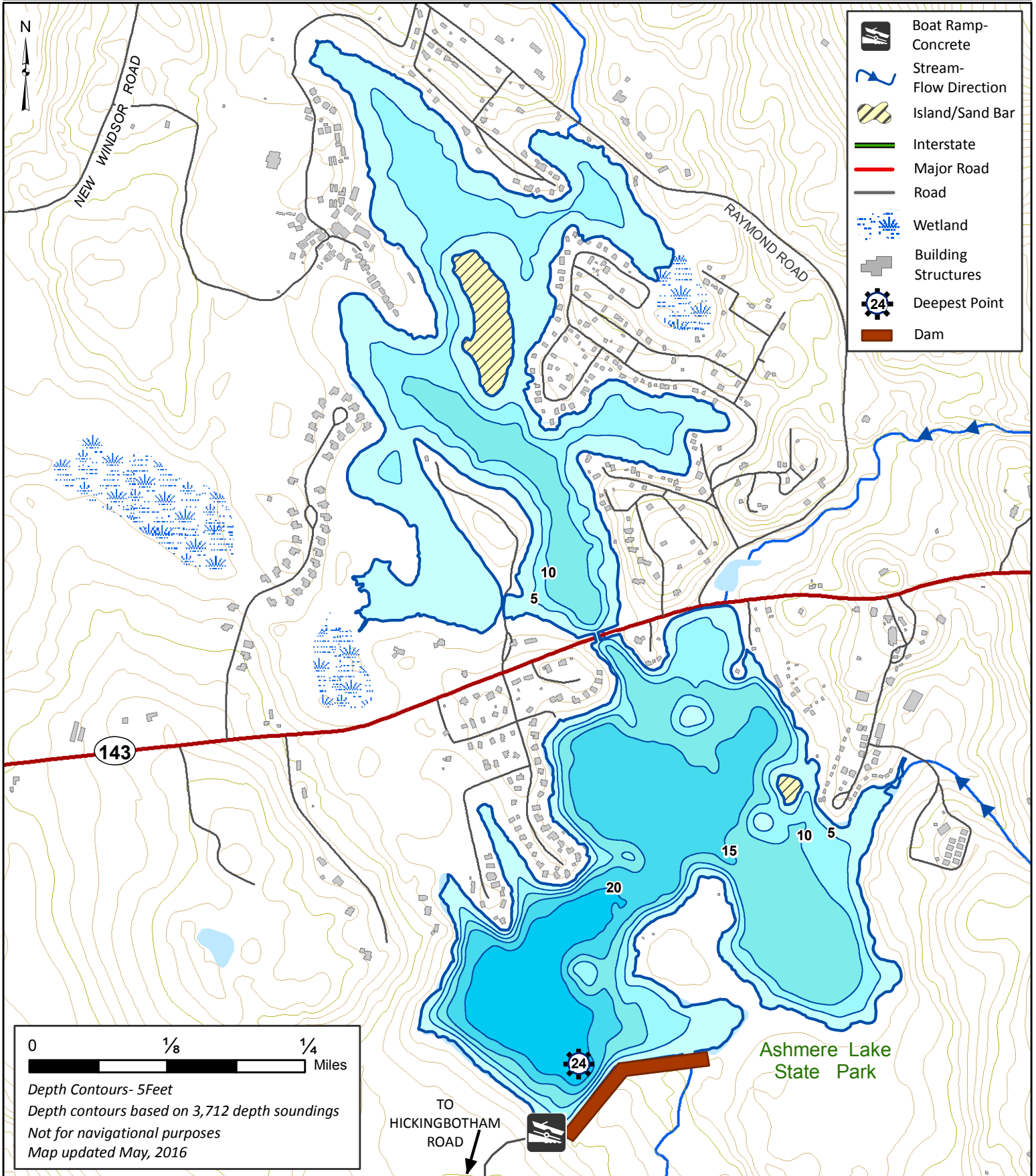
287 Acres

Hinsdale, Peru

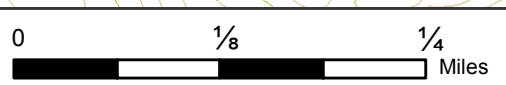
Housatonic River Watershed

Coordinates: 71°57'21"W 42°18'47"N

USGS Quad: PERU



- Boat Ramp - Concrete
- Stream - Flow Direction
- Island/Sand Bar
- Interstate
- Major Road
- Road
- Wetland
- Building Structures
- Deepest Point
- Dam



Depth Contours- 5Feet
 Depth contours based on 3,712 depth soundings
 Not for navigational purposes
 Map updated May, 2016

Ashmere Lake State Park

TO HICKINGBOTHAM ROAD



General Information

Ashmere Lake is a 287 acre impoundment of Bennett Brook located on Route 143 on the Hinsdale and Peru town line. The lake is divided into two basins by a dam. Access is permitted between the two by a culvert that is navigable to smaller boats. The average depth of Ashmere Lake is 8 feet with a maximum of 24 feet near the dam in the south basin. Aquatic vegetation is abundant and often dense in the northern basin and common but patchy in the southern basin. The bottom is composed primarily of mud with large areas of rock and rubble in the western and southern sections of the southern basin. The southern shore of the south basin lies within Ashmere Lake State Park and is entirely wooded; elsewhere the shores are moderately developed with houses. Ashmere Lake is typically drawn down during fall and winter so use caution when navigating during these times as depth varies seasonally.

Recreational Access

The Department of Conservation and Recreation manages a concrete boat ramp (73°5'3.40442°W 26°5.728"N) and adjacent parking area suitable for 6 trailers off of Hickingbotham Road. Shoreline access is available in areas adjacent to the ramp and in Ashmere Lake State Park. Please contact the offices of Pittsfield State Forest for additional information and/or restrictions pertaining to public access of Ashmere Lake.

Fish Populations

The following fish species were found during MassWildlife surveys: Largemouth Bass, Smallmouth Bass, Chain Pickerel, Yellow Perch, Black Crappie, Rock Bass, Pumpkinseed, Bluegill, Brown Bullhead, Sunfish, and Golden Shiner.

Fishing

Bass are the primary game fish in Ashmere Lake. Largemouth Bass are common throughout the lake whereas Smallmouth Bass are largely restricted to the deeper and rockier habitats of the Southern Basin. Yellow Perch and Bluegill are also abundant and can be found in either basin but do not typically reach larger sizes. Ashmere Lake has produced Largemouth Bass, Smallmouth Bass, Chain Pickerel, sunfish, and bullhead that meet minimum sizes for recognition by the Freshwater Sportfishing Awards Program.

Useful Links:

- [Get your Fishing License](#)
- [Freshwater Fishing](#)
- [Trout Stocking Information](#)
- [Freshwater Sportfishing Awards Program](#)

Learn more:

[Mass.gov/MassWildlife](https://mass.gov/MassWildlife)

Connect with us:

[Facebook.com/MassWildlife](https://facebook.com/MassWildlife)

Your local

MassWildlife office
88 Old Windsor Road
Dalton, MA 01226
(413) 684-646

STOP AQUATIC HITCHHIKERS!

Prevent the transport of nuisance species.
Clean all recreational equipment.
[ProtectYourWaters.net](https://protectyourwaters.net)

Updated: 2016