



David E. Pierce, PhD.  
Director

# Commonwealth of Massachusetts

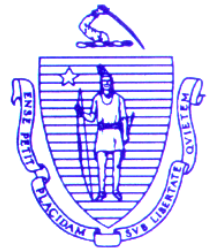
## Division of Marine Fisheries

251 Causeway Street, Suite 400

Boston, Massachusetts 02114

(617) 626-1520

fax (617) 626-1509



Charles D. Baker  
Governor

Karyn E. Polito  
Lieutenant Governor

Matthew A. Beaton  
Secretary

George N. Peterson, Jr.  
Commissioner

Mary-Lee King  
Deputy Commissioner

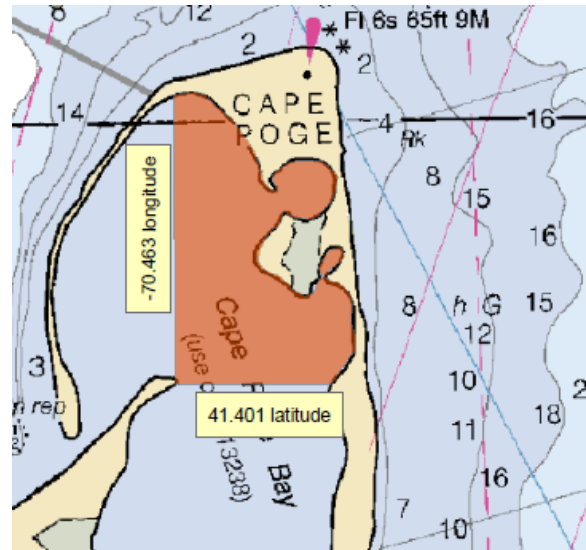
March 28, 2017

### Marine Fisheries Advisory

## **Fish Pot and Conch Pot Fishing Closure in Cape Poge Bay Extended for 2017**

The Division of Marine Fisheries is temporarily extending the closure in an area of northeast Cape Poge Bay to conch pot and fish fishing. No fish pot or conch pot gear may be set in this area until further notice. The closed area includes all waters east of  $-70.643^{\circ}$  W longitude and north of  $41.401^{\circ}$  N latitude (see map). The closure is being implemented and enforced via conditions to the commercial fisherman permit issued pursuant to the authority at G.L. c. 130 §80 and 322 CMR §7.01(7).

Cape Poge Bay was used a test bombing site during World War II. Unexploded munitions present a public health and safety concern. By closing this area to fish and conch pot fishing, the Army Corps of Engineers will be able to continue their work identifying and removing these munitions from the Bay's shallow waters. These live munitions tend to be submerged under the sand bottom and require the use of underwater sensors to identify munitions that are then removed by trained and authorized divers. However, the presence of fixed fishing gear in the area interferes with the operation of the underwater sensor being used to detect the munitions.



For more information contact Deputy Director Dan McKiernan at 617 626-1536, or [dan.mckiernan@state.ma.us](mailto:dan.mckiernan@state.ma.us).