



MEMA REPORTS

MEMA REPORTS is a monthly newsletter produced by the Massachusetts Emergency Management Agency (MEMA) to help keep the Public Safety Community of Massachusetts better informed about the day's Emergency Management issues. MEMA REPORTS also appears on the MEMA website: www.mass.gov/mema.

March 20, 2017

Volume 16, Issue 1

MEMA Assists Conway and Goshen After EF-1 Tornado



Just before 7:30 PM on Saturday, February 25th, an EF-1 tornado struck Goshen and Conway. The tornado had estimated winds of up to 110 mph and left a path of damage that was 5 miles long and 200 yards wide. The tornado damaged 12 homes and 2 barns in Conway and brought down numerous trees in both Goshen and Conway. Thankfully, there were no injuries reported by the towns. This was the first recorded tornado in February in Massachusetts since statistics started being recorded in 1950.

MEMA staff responded to both Goshen and Conway to support local public safety agencies, coordinate mutual aid from state agencies and neighboring communities, receive and process requests from the towns for resources, and coordinate the state's multi-agency response. MEMA continues to work with Conway during its recovery. Lieutenant Governor Polito toured the impacted area and met with local officials and residents.

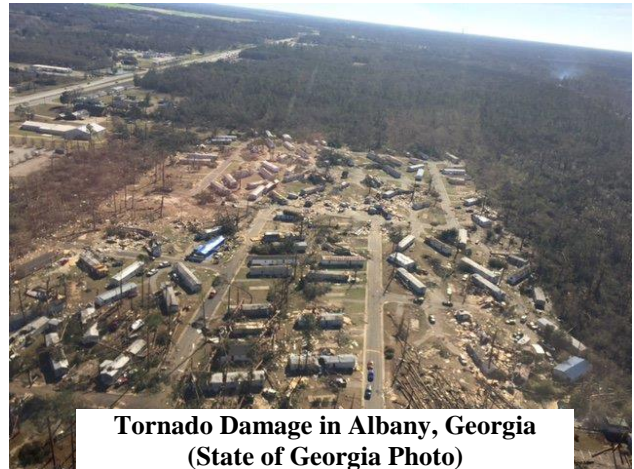
A [fund](#) has been set up by the town of Conway to respond to the outpouring of people asking how they can help the church and the residents who were impacted by the storm. Cash and gift cards for the Conway Tornado Relief Fund are also being accepted at the Greenfield Savings Bank branch on Route 116 in Conway.

State Emergency Operations Center (SEOC) Activates for Winter Storms

The State Emergency Operations Center (SEOC) at MEMA headquarters in Framingham was activated for significant winter storms on February 9 and February 12-13. The SEOC, which was activated to provide situational awareness and a common operating picture to stakeholders and coordinate assistance to cities and towns, included representatives from MEMA, Massachusetts State Police (MSP), MassDOT, Department of Public Utilities (DPU), Department of Conservation and Recreation (DCR), Coastal Zone Management (CZM), Department of Environmental Protection (DEP), Department of Fire Services (DFS), Massachusetts National Guard and the Department of Public Health (DPH). The storms brought moderate snowfall, transportation impacts, coastal impacts, and power outages, but thankfully no major issues or damage.

MEMA Assists Georgia Emergency Management Agency in Tornado Recovery

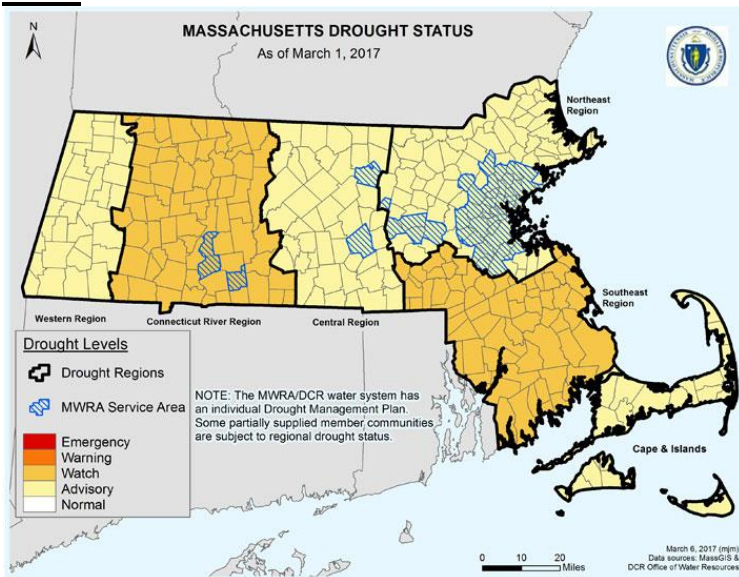
The state of Georgia was impacted by Hurricane Matthew on October 8, 2016 and tornadoes on January 2 and January 21-22, all three of which resulted in federal major disaster declarations. As part of the recovery process, Georgia Emergency Management Agency (GEMA) issued a mutual aid request through the Emergency Management Assistance Compact (EMAC) for staff to assist in implementing the Public Assistance program to process claims for reimbursement after the disaster.



Andrew Poliferno, a MEMA Public Assistance Program Coordinator, is currently deployed to Georgia for 30 days to assist GEMA with the recovery process. During his time in Georgia, Andrew is learning the new FEMA Public Assistance Delivery Model, which is an updated way that FEMA is working with disaster declaration recipients (states) and sub-recipients (government agencies and non-profits) through the use of a web-based grants management software to improve the documentation collection process and expedite reimbursement. Andrew is also participating in exploratory phone calls and recovery scoping meetings with FEMA, the state, and applicants to discuss the public assistance program, damage documentation, the new software and answer questions. He is also working with his GEMA counterpart to process reimbursements for Hurricane Matthew. After his deployment, Andrew will bring his experience with the new process and software back to Massachusetts and help train other MEMA public assistance staff about the program.

MEMA is proud to assist other states during their time of need and deployed staff bring back valuable information to further the Commonwealth's emergency management program. Previously, MEMA has deployed staff via EMAC to several states to assist after disasters, and has also requested assistance from other states during disasters in the Commonwealth. EMAC facilitates member states sending personnel and equipment to help disaster relief efforts in other states. The requesting state, Georgia, is responsible for expenses incurred during the EMAC deployment.

Drought Conditions Improve Across Commonwealth, Water Deficit Continues Throughout State



While many areas of the state experienced some levels of precipitation in February, a majority of the state continues to experience a water deficit.

On March 10th, the Executive Office of Energy and Environmental Affairs (EEA) announced a Drought Watch for the Connecticut River Valley and Southeast Region, down from a Drought Warning in the month of February; and a Drought Advisory for the Western, Central, and Northeast Region as well as the Cape and Islands, down from a Drought Watch for the Western and Central Regions in the month of February, and unchanged for the Northeast Region and Cape and Islands. The

announcement is the result of recommendations by the Commonwealth's [Drought Management Task Force](#) which is comprised of state, federal and local officials and is led jointly by EEA and MEMA.

“Drought conditions across the Commonwealth improved over the past month as a result of precipitation and the public’s water conservation efforts. Nonetheless, the drought persists and it remains critical that the public continues to conserve water,” **said Massachusetts Emergency Management Agency (MEMA) Director Kurt Schwartz**. “Additionally, with spring and summer fast approaching, and the likelihood of drought conditions continuing for the foreseeable future, now is the time to plan for, and implement outdoor water conservation measures to offset the expected seasonal increase in the demand for water to support recreational and agricultural activities.”

The state continues to intensely monitor and assess the drought situation, and any associated environmental and agricultural impacts. Furthermore, the state asks the public to be mindful of the amount of water they are using, and to reduce indoor water use, address leaks as soon as possible, and for larger buildings and businesses to conduct water audits to ensure they identify areas of leaks and potential water conservation. All these steps will greatly help reduce water use to ensure essential needs such as drinking water and fire protection are being met, habitats have enough water to recover, and to stretch our water supplies into the spring. For additional details, go to <http://www.mass.gov/eea/pr-2017/drought-conditions-improve-across-commonwealth.html> or <http://www.mass.gov/eea/drought/>.

WebEOC – IMX Connect APP

WebEOC has been configured to send notifications to all users through the IMX Connect App for the following boards: Community Status, Shelter Status and Transportation Status. The IMX Connect App is available for both iPhone and Android devices. The configuration pdf for the App can be found on the “New in WebEOC” board of WebEOC. If you need further assistance, please contact Jaci Hamel, at jaclyn.hamel@state.ma.us.

MEMA Staff Updates

Sarah White has been named the Acting Mitigation and Disaster Recovery Section Chief.

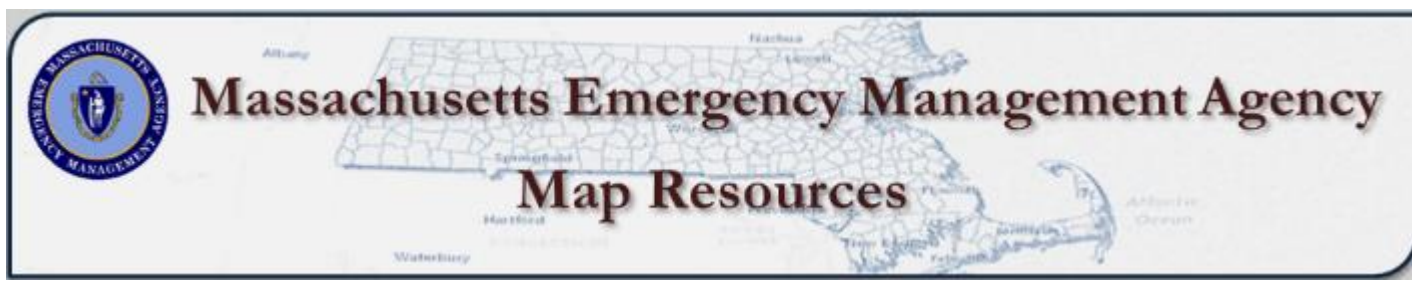
MEMA Represented on the 2017 External Stakeholder Working Group (ESWG)

Sarah White, MEMA's Acting Mitigation and Disaster Recovery Section Chief, has been named as one of three state representatives on FEMA's 2017 External Stakeholder Working Group. The ESWG, a diverse group of hazard mitigation professionals, is tasked with opening channels of communications between federal, state, and local mitigation staff; providing insight into mitigation and/or Hazard Mitigation Assistance (HMA) program issues from various levels of government; increasing transparency in HMA goals, program priorities, and policy development; and helping HMA provide a consistent experience for stakeholders.

Featured MEMA Webpage: Map Resources

In an effort to highlight MEMA's resources that are available to the public safety community, we feature a MEMA webpage each month. This month we are highlighting the [Map Resources](#) webpage.

MEMA has a gallery of maps that can be used to support statewide planning and response efforts. This includes power outage maps, weather radar, maps of hurricane evacuation and inundation zones, nuclear power plant maps, statewide mutual aid map and more. Visit the Map Resources webpage at <http://www.mass.gov/eopss/agencies/mema/resources/maps/> for more information.



Latest Federal Disaster Assistance Totals for the 2015 Blizzard

The Disaster and Snow Assistance process for local communities, state agencies, and eligible private non-profits for the January 26-28, 2015 Blizzard continues to advance. As of February 28th, 2017, 1086 Project Worksheets (PWs) have been obligated by FEMA, totaling more than \$76.9M in federal aid reimbursements to local communities, state agencies, and eligible private non-profits (75% of the \$101.5M eligible project costs). Obligations during the month of February saw the total eligible project costs pass the \$100 million dollar mark.

MEMA Training Update

Upcoming trainings with open seats:

Date	Class	Location
3/23	**Incident Response to Terrorist Bombings (IRTB) & Prevention of and Response to Suicide Bombing Incidents (PRSBI) (AWR-130/1)	Springfield
3/23	Hazardous Materials Response - Awareness Level (HAZ01)	Wrentham
3/24-3/26	Community Emergency Response Team (CERT) Train-the-Trainer (G428)	Saugus
3/30	Site Protection and Document Screening Techniques (AWR-325)	Hopkinton
3/30	Hazardous Materials Response - Awareness Level (HAZ01)	Agawam
4/5-6	ICS-400: Advanced ICS (ICS-400)	Boston
4/10	Procurement under FEMA Awards (L-1)	Agawam
4/12	Procurement under FEMA Awards (L-1)	Worcester
4/13	Procurement under FEMA Awards (L-1)	Bridgewater
4/14	Procurement under FEMA Awards (L-1)	Natick

4/18,20,21	ICS-300: Intermediate ICS for Expanding Incidents (ICS-300)	Canton
4/25-4/27	ICS-300: Intermediate ICS for Expanding Incidents (ICS-300)	Westfield

To view a full calendar and register for classes, see MEMA’s [Training Registration System calendar](#).
****Classes marked with an asterisk have limited seating and priority is given to personnel with specific job responsibilities (such as those involved with the Boston Marathon). See course descriptions for more information.**

During the month of January, MEMA’s Training and Exercise Unit hosted 41 students in two different courses:

- *ICS-100/NIMS-700 Incident Command System in Middleborough*
- *ICS-400 Advanced ICS in Lanesborough*

To date in 2017, 176 students have taken 7 separate MEMA supported classes. For additional MEMA Training opportunities go to: <http://www.mass.gov/eopss/agencies/mema/resources/training/>.

MEMA’S Mission Statement

MEMA is the state agency charged with ensuring the state is prepared to withstand, respond to, and recover from all types of emergencies and disasters, including natural hazards, accidents, deliberate attacks, and technological and infrastructure failures. MEMA is committed to an all hazards approach to emergency management. By building and sustaining effective partnerships with federal, state and local government agencies, and with the private sector - - individuals, families, non-profits, and businesses - - MEMA ensures the Commonwealth’s ability to rapidly recover from large and small disasters by assessing and mitigating threats and hazards, enhancing preparedness, coordinating response operations, and strengthening our capacity to rebuild and recover.

Follow MEMA For Important Emergency Information

Twitter - www.twitter.com/MassEMA; **Facebook** - www.facebook.com/MassachusettsEMA;
YouTube - www.youtube.com/MassachusettsEMA; **MEMA Website** – www.mass.gov/mema;
Massachusetts Alerts app – www.mass.gov/mema/mobileapp

