

# DHCD EA Monthly Report, Statewide Summary May 2017

## EA Applications and Placements

EA Applications	May-17	Apr-17	YTD (#)
Families Applying for EA	815	559	8,330
Health & Safety Assessments Completed	55*	271	2,486
Families with Health & Safety Risk	48	232	2,100
Families Entering EA (Shelter, Motels, and HomeBASE)	401	355	4,435
Placement-to-Application Ratio	49%	64%	53%

### Notes:

Families submitting more than one application during a month were counted once.

Families entering EA includes families entering shelter or hotels/motels and families diverted from shelter or hotels/motels into HomeBASE at the front door.

\*The HAS assessments for 256 families referred in May were not complete at time of reporting. Four families refused to cooperate with their HAS assessments.

EA Placements	May-17		Apr-17		Year-to-Date	
	Number	Percent	Number	Percent	Number	Percent
Total Entering EA or HomeBASE	401	100%	355	100%	4,435	100%
Entering EA Shelter/Motels	318	79%	277	78%	3,533	80%
Presumptive Placements	50	12%	58	16%	443	10%
Shelters	317	79%	276	78%	3,475	78%
Motels	1	0%	1	<1%	58	1%
HomeBASE Diversions (Front Door)	83	21%	78	22%	902	20%

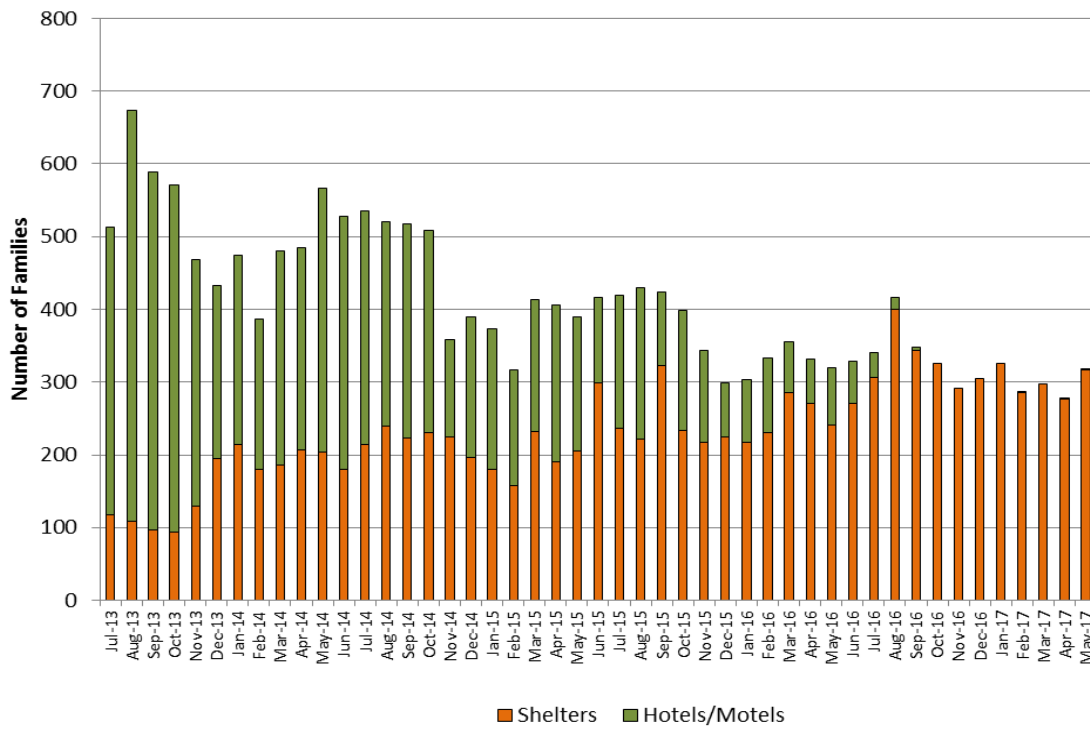
### EA Shelter/Motels Placements, Reasons for Homelessness

Reason	May-17		Apr-17		Year-to-Date	
	Number	Percent	Number	Percent	Number	Percent
<b>Total</b>	<b>318</b>	<b>100%</b>	<b>277</b>	<b>100%</b>	<b>3,533</b>	<b>100%</b>
Domestic Violence	50	16%	35	13%	502	14%
Fire/Natural Disaster	3	1%	4	1%	63	2%
Evict: Condemnation	5	2%	3	1%	36	1%
Evict: Excused Conduct	0	0%	0	0%	2	<1%
Evict: Foreclosure	0	0%	1	<1%	14	<1%
Evict: Non Payment - Medical	0	0%	0	0%	3	<1%
Evict: Non Payment - Disability	4	1%	0	0%	17	<1%
Evict: Non Payment - Income Loss	17	5%	15	5%	243	7%
Evict: Non Renewal of Tenancy	13	4%	11	4%	129	4%
Threatened Evict - Unauthorized Tenant	43	14%	35	13%	408	12%
H&S: Violent Conduct	5	2%	14	5%	84	2%
H&S: Mental Illness	2	1%	3	1%	36	1%
H&S: Substance Abuse	0	0%	0	0%	27	1%
H&S: Conditions in Unit	5	2%	5	2%	88	2%
H&S: Irregular Housing situation	111	35%	108	39%	1115	32%
H&S: Not Meant for Human Habitation	43	14%	29	10%	544	15%
TESI or Aid Pending	17	5%	14	5%	222	6%

**Note:** Families whose HomeBASE rental assistance benefit ended during the month may be placed in later months.

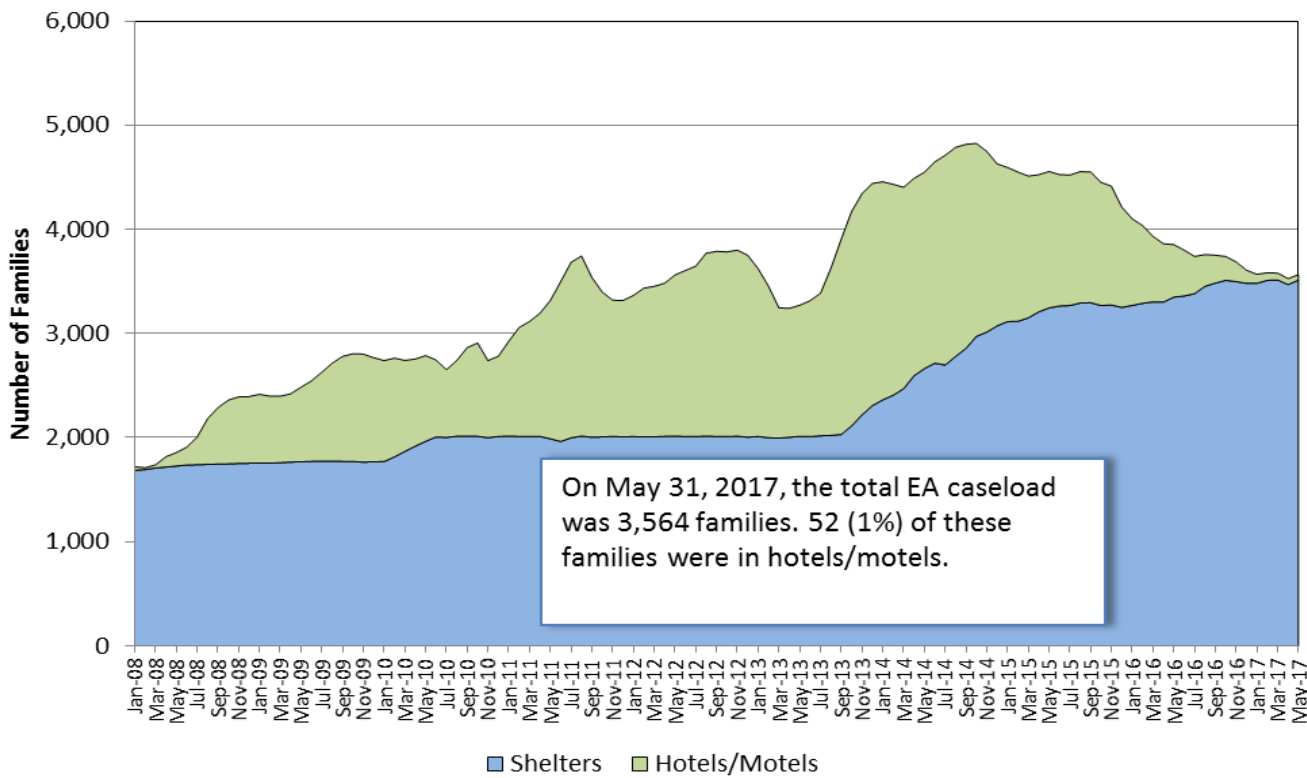
**Sources:** EA Daily Entry Reports and ASIST.

### EA Shelter and Hotel/Motel Placements



### EA Caseload

Average Daily EA Shelter & Hotel/Motel Caseload, Jan. 2008 - May 2017



**Note:** Methodology for calculating shelter caseload changed in FY15 from an average daily number of contracted units (minus vacancies) to an end-of-the-month count of occupied shelter units using DHCD's bed registry.

## EA Exits

Families Exiting Shelter and Hotels/Motels	May-17		Apr-17		Year-to-Date	
	Number	Percent	Number	Percent	Number	Percent
<b>Total Exits</b>	<b>268</b>	<b>100%</b>	<b>294</b>	<b>100%</b>	<b>3,567</b>	<b>100%</b>
Abandoned	38	14%	36	12%	454	13%
Criminal Activity	0	0%	1	<1%	10	<1%
Feasible Alternative Housing with HB	163	61%	168	57%	1,953	55%
Feasible Alternative Housing without HB	28	10%	46	16%	540	15%
Ineligible	7	3%	6	2%	68	2%
Rejected Placement	1	<1%	3	1%	18	1%
NonCompliance	3	1%	7	2%	82	2%
Temporary Shelter Interruption	23	9%	22	7%	325	9%
Other/Unknown	5	2%	5	2%	117	3%

**Notes:**  
 Families terminated from shelter for abandoning their placements or non-compliance may return to the system pending an appeal.  
 Families receiving a Temporary Shelter Interruption may return to the system within 30 days.

## RAFT - Homelessness Prevention

RAFT	May-17		Apr-17		Year-to-Date	
	Number	Percent	Number	Percent	Number	Percent
<b>Families Applying</b>	<b>110</b>	<b>100%</b>	<b>219</b>	<b>100%</b>	<b>4,468</b>	<b>100%</b>
Families Approved	89	81%	191	87%	3,939	88%
Asked to Leave	20	18%	39	18%	1,119	25%
Domestic Violence	2	2%	3	1%	118	3%
Eviction (Private)	19	17%	42	19%	1,037	23%
Eviction (Public/Subsidized Housing)	20	18%	53	24%	714	16%
Fire/Flood/Natural Disaster	0	0%	1	<1%	29	1%
Foreclosure	0	0%	3	1%	23	1%
Health and Safety	1	1%	6	3%	115	3%
HomeBASE RA Expiration	2	2%	7	3%	76	2%
Severe Overcrowding	16	15%	23	11%	453	10%
Utility Shut-Off	8	7%	0	0%	210	5%
Other Crisis	1	1%	14	6%	45	1%

## Expenditures

Expenditure Type	Mar-17	YTD FY17	Current Budget	Percent Spent FY17 YTD
Emergency Assistance	\$15,149,714	\$163,901,389	\$179,352,340	91%
HomeBASE	\$1,012,602	\$26,031,097	\$31,943,664	81%
RAFT	-\$71,370	\$12,927,952	\$13,000,000	99%

**Note:**  
Current month spending data are estimates.  
Estimated RAFT spending for May was negative because DHCD was in the process of reallocating funds among providers.

## DHCD - EA Monthly Report May 2017

	May #	May %	Apr #	YTD	YTD (%)
<b>Families Applying for EA</b>					
<b>Total</b>	<b>815</b>	<b>100%</b>	<b>559</b>	<b>8,330</b>	<b>100%</b>
Boston	145	18%	95	1,545	19%
Central Mass	58	7%	53	806	10%
North Shore	308	38%	201	2,686	32%
South Shore	128	16%	100	1,567	19%
Western Mass	176	22%	110	1,726	21%
<b>Families Placed in EA Shelter and Hotels/Motels</b>					
<b>Total</b>	<b>318</b>	<b>100%</b>	<b>277</b>	<b>3,533</b>	<b>100%</b>
Boston	129	41%	104	1,374	39%
Central Mass	26	8%	21	269	8%
North Shore	64	20%	63	719	20%
South Shore	45	14%	36	532	15%
Western Mass	54	17%	53	639	18%
<b>Average Daily Number of Families in Motels</b>					
<b>Statewide Average</b>	<b>56</b>	<b>100%</b>	<b>62</b>	<b>181</b>	<b>100%</b>
Boston	19	34%	23	75	41%
Central Mass	3	5%	3	5	3%
North Shore	32	57%	34	77	43%
South Shore	2	4%	2	23	13%
Western Mass	0	0%	0	1	<1%
<b>HomeBASE Entries (Diversion and Exits)</b>					
<b>Total</b>	<b>250</b>	<b>100%</b>	<b>263</b>	<b>3,003</b>	<b>100%</b>
Berkshire	5	2%	1	21	1%
CTI	25	10%	29	407	14%
Franklin	16	6%	10	41	1%
HAC	5	2%	9	49	2%
HAP	35	14%	65	560	19%
MBHP	53	21%	54	650	22%
RCAP	6	2%	5	75	2%
SMOC	1	<1%	3	51	2%
SSHDC	78	31%	66	850	28%
LHAND	20	8%	10	172	6%
CMHA	6	2%	11	127	4%

### Notes

Average Daily Number of Families in Hotels is calculated as the average across weekly point-in-time estimates from the reported month; Hotel region indicates region of originating eligibility office.

Totals may not equal the sum or regions due to rounding.

**Sources:** EA Daily Entry Report, ASIST, and EA Weekly Motel Reports.

DHCD - EA Monthly Report, Cumulative Data  
May 2017

	Current Month		Jul	Aug	Sep	Oct	Nov	Dec	Jan	Feb	Mar	Apr	FY17	
	May #	May %											YTD #	YTD %
<b>Families Applying for EA</b>	<b>815</b>	<b>100%</b>	<b>859</b>	<b>892</b>	<b>867</b>	<b>897</b>	<b>681</b>	<b>710</b>	<b>868</b>	<b>532</b>	<b>650</b>	<b>559</b>	<b>8,330</b>	<b>100%</b>
Boston	145	18%	161	189	178	165	141	111	167	76	117	95	1,545	19%
Central Mass	58	7%	89	85	87	92	82	76	83	38	63	53	806	10%
North Shore	308	38%	303	275	253	261	209	232	252	189	203	201	2,686	32%
South Shore	128	16%	146	161	161	198	114	138	184	103	134	100	1,567	19%
Western Mass	176	22%	160	182	188	181	135	153	182	126	133	110	1,726	21%
<b>Health &amp; Safety Assessment</b>														
<b>H&amp;S Assessment Completed</b>	<b>55</b>	<b>100%</b>	<b>223</b>	<b>267</b>	<b>264</b>	<b>259</b>	<b>228</b>	<b>212</b>	<b>262</b>	<b>209</b>	<b>236</b>	<b>271</b>	<b>2,486</b>	<b>100%</b>
Families with H&S Risk	48	87%	183	232	226	221	179	174	230	176	199	232	2,100	84%
<b>Families Placed in Shelter/Motels</b>														
<b>Total</b>	<b>318</b>	<b>100%</b>	<b>341</b>	<b>417</b>	<b>348</b>	<b>325</b>	<b>291</b>	<b>305</b>	<b>326</b>	<b>287</b>	<b>298</b>	<b>277</b>	<b>3,533</b>	<b>100%</b>
Families Placed in Motels	1	0%	34	17	4	0	0	0	0	1	0	1	58	2%
Presumptive Placement	50	<1%	45	47	29	21	26	36	42	37	52	58	443	13%
Boston	129	41%	132	155	129	137	132	133	124	94	105	104	1,374	39%
Central Mass	26	8%	26	33	24	27	15	24	27	22	24	21	269	8%
North Shore	64	20%	59	87	81	61	54	57	66	62	65	63	719	20%
South Shore	45	14%	53	72	54	43	44	40	52	47	46	36	532	15%
Western Mass	54	17%	71	70	60	57	46	51	57	62	58	53	639	18%
<b>Monthly Caseload (# of Families)</b>	<b>05/31/17</b>		<b>7/31/2016</b>	<b>8/31/2016</b>	<b>9/30/2016</b>	<b>10/31/2016</b>	<b>11/30/2016</b>	<b>12/31/2016</b>	<b>1/31/2017</b>	<b>2/28/2017</b>	<b>3/31/2017</b>	<b>04/30/17</b>		
<b>Total</b>	<b>3,564</b>	<b>100%</b>	<b>3,739</b>	<b>3,757</b>	<b>3,751</b>	<b>3,739</b>	<b>3,687</b>	<b>3,607</b>	<b>3,568</b>	<b>3,582</b>	<b>3,579</b>	<b>3,527</b>	<b>3,645</b>	<b>100%</b>
Shelter	3,512	99%	3,382	3,452	3,483	3,510	3,498	3,481	3,481	3,510	3,514	3,469	3,481	95%
Hotel/Motel	52	1%	357	305	268	229	189	126	87	72	65	58	164	5%
<b>Average Number of Families in Motels</b>														
<b>Statewide Average</b>	<b>56</b>	<b>100%</b>	<b>399</b>	<b>327</b>	<b>287</b>	<b>246</b>	<b>212</b>	<b>152</b>	<b>100</b>	<b>78</b>	<b>69</b>	<b>62</b>	<b>181</b>	<b>100%</b>
Boston	19	34%	163	136	119	99	88	69	47	34	27	23	75	41%
Central Mass	3	5%	10	8	5	6	5	6	4	3	3	3	5	3%
North Shore	32	57%	158	128	115	105	90	63	47	39	37	34	77	43%
South Shore	2	4%	65	54	47	36	29	14	2	2	2	2	23	13%
Western Mass	0	0%	4	1	1	0	0	0	0	0	0	0	1	<1%
<b>Placement to Application Ratio</b>	<b>49.2%</b>		<b>49.1%</b>	<b>54.9%</b>	<b>50.3%</b>	<b>44.7%</b>	<b>57.0%</b>	<b>56.2%</b>	<b>45.4%</b>	<b>71.8%</b>	<b>56.5%</b>	<b>63.5%</b>	<b>53.2%</b>	

	May #	May %	Jul	Aug	Sep	Oct	Nov	Dec	Jan	Feb	Mar	Apr	YTD #	YTD %
<b>Reasons for Homelessness, Shelter/Motels</b>														
<b>Total</b>	<b>318</b>	<b>100%</b>	<b>341</b>	<b>417</b>	<b>348</b>	<b>325</b>	<b>291</b>	<b>305</b>	<b>326</b>	<b>287</b>	<b>298</b>	<b>277</b>	<b>3,533</b>	<b>100%</b>
Domestic Violence	50	16%	49	67	63	43	37	38	33	34	53	35	502	14%
Fire/Natural Disaster	3	1%	10	7	2	3	5	3	13	6	7	4	63	2%
Evict: Condemnation	5	2%	4	3	6	3	3	0	3	5	1	3	36	1%
Evict: Excused Conduct	0	0%	0	0	0	1	0	0	0	1	0	0	2	<1%
Evict: Foreclosure	0	0%	2	1	0	4	0	0	0	2	4	1	14	<1%
Evict: Non Payment - Medical	0	0%	0	0	0	0	1	0	0	1	1	0	3	<1%
Evict: Non Payment - Disability	4	1%	2	1	1	5	0	0	1	2	1	0	17	<1%
Evict: Non Payment - Income Loss	17	5%	17	31	28	28	30	19	26	12	20	15	243	7%
Evict: Non Renewal of Tenancy	13	4%	9	9	16	6	10	11	20	13	11	11	129	4%
Threatened Evict - Unauthorized Tenant	43	14%	27	57	39	41	40	30	24	42	30	35	408	12%
H&S: Violent Conduct	5	2%	9	5	6	4	9	5	10	9	8	14	84	2%
H&S: Mental Illness	2	1%	4	1	3	6	2	2	3	4	6	3	36	1%
H&S: Substance Abuse	0	0%	5	6	3	2	1	1	2	3	4	0	27	1%
H&S: Conditions in Unit	5	2%	10	10	14	3	10	10	4	12	5	5	88	2%
H&S: Irregular Housing situation	111	35%	89	120	88	87	76	109	128	107	92	108	1,115	32%
H&S: Not Meant for Human Habitation	43	14%	74	67	59	69	52	48	40	23	40	29	544	15%
Aid Pending	9	3%	19	11	5	9	7	8	8	5	7	8	96	3%
Replacement/TESI	8	3%	11	21	15	11	8	21	11	6	8	6	126	4%
<b>Shelter and Hotel/Motel Exits*</b>														
<b>Total</b>	<b>268</b>	<b>100%</b>	<b>399</b>	<b>394</b>	<b>331</b>	<b>307</b>	<b>313</b>	<b>372</b>	<b>342</b>	<b>259</b>	<b>288</b>	<b>294</b>	<b>3,567</b>	<b>100%</b>
Abandoned	38	14%	66	63	47	27	35	37	37	38	30	36	454	13%
Criminal Activity/Fraud	0	0%	1	3	1	1	1	1	1	0	0	1	10	<1%
Feasible Alternative Housing with HB	163	61%	188	177	175	158	182	233	212	149	148	168	1,953	55%
Feasible Alternative Housing without HB	28	10%	71	67	51	49	42	43	36	36	71	46	540	15%
Ineligible	7	3%	5	7	10	6	8	8	6	3	2	6	68	2%
No Show/Rejected Placement	1	<1%	3	4	0	1	1	1	1	1	2	3	18	1%
NonCompliance/Termination for Cause	3	1%	13	14	8	17	5	5	4	3	3	7	82	2%
Temporary Shelter Interruption	23	9%	34	34	28	35	33	35	38	16	27	22	325	9%
Other/Unknown	5	2%	18	25	11	13	6	9	7	13	5	5	117	3%
<b>Hotel/Motel Exits*</b>														
<b>Total</b>	<b>4</b>	<b>100%</b>	<b>45</b>	<b>39</b>	<b>27</b>	<b>31</b>	<b>35</b>	<b>50</b>	<b>31</b>	<b>13</b>	<b>6</b>	<b>7</b>	<b>288</b>	<b>100%</b>
Abandoned	0	0%	3	3	1	0	2	0	0	0	0	0	9	3%
Criminal Activity	0	0%	0	0	0	0	0	0	0	0	0	0	0	0%
Feasible Alternative Housing with HB	4	100%	16	14	8	19	21	42	24	12	6	6	172	60%
Feasible Alternative Housing without HB	0	0%	19	18	11	9	5	1	0	0	0	0	63	22%
Ineligible	0	0%	0	0	1	0	2	0	1	0	0	1	5	2%
No Show/Rejected Placement	0	0%	1	0	0	0	0	0	0	0	0	0	1	<1%
NonCompliance/Termination for Cause	0	0%	4	2	0	3	2	1	0	0	0	0	12	4%
Temporary Shelter Interruption	0	0%	0	1	6	0	2	6	6	0	0	0	21	7%
Other/Unknown	0	0%	2	1	0	0	1	0	0	1	0	0	5	2%

	May #	May %	Jul	Aug	Sep	Oct	Nov	Dec	Jan	Feb	Mar	Apr	YTD #	YTD %
<b>HomeBASE Entries (Diversion and Exits)</b>														
<b>Total</b>	<b>250</b>	<b>100%</b>	<b>320</b>	<b>271</b>	<b>277</b>	<b>257</b>	<b>296</b>	<b>310</b>	<b>268</b>	<b>271</b>	<b>220</b>	<b>263</b>	<b>3,003</b>	<b>100%</b>
Berkshire	5	2%	2	0	5	4	1	0	2	0	1	1	21	1%
CTI	25	10%	34	55	41	29	55	29	37	41	32	29	407	14%
Franklin	16	6%	0	1	1	0	0	3	5	1	4	10	41	1%
HAC	5	2%	5	2	7	5	9	3	2	1	1	9	49	2%
HAP	35	14%	44	63	52	47	53	65	47	47	42	65	560	19%
MBHP	53	21%	85	51	43	54	53	79	74	54	50	54	650	22%
RCAP	6	2%	8	7	5	8	8	8	6	8	6	5	75	2%
SMOC	1	<1%	12	4	3	2	1	5	7	6	7	3	51	2%
SSHDC	78	31%	94	60	94	83	86	79	67	83	60	66	850	28%
LHAND	20	8%	15	19	16	15	16	23	13	17	8	10	172	6%
CMHA	6	2%	21	9	10	10	14	16	8	13	9	11	127	4%
<b>HomeBASE Diversion by Region</b>														
<b>Total</b>	<b>83</b>	<b>100%</b>	<b>81</b>	<b>73</b>	<b>88</b>	<b>76</b>	<b>97</b>	<b>94</b>	<b>68</b>	<b>95</b>	<b>69</b>	<b>78</b>	<b>902</b>	<b>100%</b>
Berkshire	2	2%	0	0	2	1	0	0	2	0	1	0	8	1%
CTI	14	17%	19	34	18	18	35	18	19	23	16	18	232	26%
Franklin	0	0%	0	0	0	0	0	2	0	0	1	0	3	<1%
HAC	1	1%	1	1	1	3	4	1	0	1	0	4	17	2%
HAP	15	18%	15	12	16	13	15	24	17	21	14	24	186	21%
MBHP	4	5%	6	1	9	6	7	12	6	5	8	6	70	8%
RCAP	1	1%	1	0	1	3	3	1	0	2	0	0	12	1%
SMOC	0	0%	0	0	0	0	0	0	1	1	0	0	2	<1%
SSHDC	40	48%	38	19	36	29	30	35	18	38	25	22	330	37%
LHAND	6	7%	1	5	5	2	3	1	3	3	4	3	36	4%
CMHA	0	0%	0	1	0	1	0	0	2	1	0	1	6	<1%
<b>HomeBASE Shelter Exits by Region</b>														
<b>Total</b>	<b>165</b>	<b>100%</b>	<b>215</b>	<b>178</b>	<b>174</b>	<b>166</b>	<b>177</b>	<b>178</b>	<b>175</b>	<b>161</b>	<b>142</b>	<b>179</b>	<b>1,910</b>	<b>100%</b>
Berkshire	3	2%	2	0	3	3	1	0	0	0	0	1	13	1%
CTI	11	7%	14	20	23	11	20	11	18	18	16	11	173	9%
Franklin	16	10%	0	1	1	0	0	1	5	1	3	10	38	2%
HAC	4	2%	4	1	6	2	5	2	2	0	1	5	32	2%
HAP	20	12%	29	51	36	34	38	41	30	26	28	41	374	20%
MBHP	47	28%	68	40	27	39	33	50	49	38	35	45	471	25%
RCAP	5	3%	7	6	4	5	5	7	6	6	6	5	62	3%
SMOC	1	1%	12	3	3	2	1	4	6	5	6	3	46	2%
SSHDC	38	23%	47	36	51	49	51	32	47	42	34	44	471	25%
LHAND	14	8%	11	12	10	12	9	14	6	13	4	6	111	6%
CMHA	6	4%	21	8	10	9	14	16	6	12	9	8	119	6%



	May #	May %	Jul	Aug	Sep	Oct	Nov	Dec	Jan	Feb	Mar	Apr	YTD #	YTD %
<b>HomeBASE Hotel Exits by Region</b>														
<b>Total</b>	<b>2</b>	<b>100%</b>	<b>24</b>	<b>20</b>	<b>15</b>	<b>15</b>	<b>22</b>	<b>38</b>	<b>25</b>	<b>15</b>	<b>9</b>	<b>6</b>	<b>191</b>	<b>100%</b>
Berkshire	0	0%	0	0	0	0	0	0	0	0	0	0	0	0%
CTI	0	0%	1	1	0	0	0	0	0	0	0	0	2	1%
Franklin	0	0%	0	0	0	0	0	0	0	0	0	0	0	0%
HAC	0	0%	0	0	0	0	0	0	0	0	0	0	0	0%
HAP	0	0%	0	0	0	0	0	0	0	0	0	0	0	0%
MBHP	2	100%	11	10	7	9	13	17	19	11	7	3	109	57%
RCAP	0	0%	0	1	0	0	0	0	0	0	0	0	1	1%
SMOC	0	0%	0	1	0	0	0	1	0	0	1	0	3	2%
SSHDC	0	0%	9	5	7	5	5	12	2	3	1	0	49	26%
LHAND	0	0%	3	2	1	1	4	8	4	1	0	1	25	13%
CMHA	0	0%	0	0	0	0	0	0	0	0	0	2	2	1%
<b>RAFT</b>														
Total Applying	<b>110</b>	<b>100%</b>	<b>483</b>	<b>506</b>	<b>497</b>	<b>525</b>	<b>524</b>	<b>488</b>	<b>374</b>	<b>289</b>	<b>453</b>	<b>219</b>	<b>4,468</b>	<b>100%</b>
Total Approved	89	81%	447	467	442	450	479	418	305	247	404	191	3,939	88%
Asked to Leave	20	18%	125	137	121	151	129	123	92	76	106	39	1,119	25%
Domestic Violence	2	2%	11	11	12	9	18	16	11	10	15	3	118	3%
Eviction (Private)	19	17%	136	121	103	122	117	110	84	70	113	42	1,037	23%
Eviction (Public/Subsidized Housing)	20	18%	48	77	92	61	90	97	55	46	75	53	714	16%
Fire/Flood/Natural Disaster	0	0%	4	2	2	3	2	4	2	2	7	1	29	1%
Foreclosure	0	0%	3	1	2	3	3	3	1	1	3	3	23	1%
Health and Safety	1	1%	11	16	11	14	12	15	6	12	11	6	115	3%
Severe Overcrowding	2	2%	8	8	13	5	7	10	6	3	7	7	76	2%
Utility Shut-Off	16	15%	59	74	63	52	74	23	19	15	35	23	453	10%
Other Crisis	8	7%	37	16	19	25	24	16	25	12	28	0	210	5%
No Crisis	1	1%	5	4	4	5	3	1	4	0	4	14	45	1%