

Installing the MassGIS Data Viewer Toolbar for ArcMap 9.x

The ArcGIS 9.x Data Viewer adds a new toolbar with buttons containing the Data Viewer functionality. It is meant to be used with data and layer files received from MassGIS that are stored in a specific folder structure (see the more detailed [Installing_ArcGIS9_SHP_DataViewer.pdf](#) document that came with your data)

Loading the Data Viewer into ArcMap involves adding the dll file to your ArcMap settings. This means you **MUST** have administrative privileges on your computer.

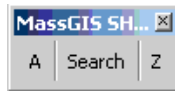
Once you have loaded the .dll file, anytime you open a new or existing ArcMap document the MassGIS ArcGIS 9.x Data Viewer toolbar will be available to you.

To load the Data Viewer, first make sure all ArcMap documents are closed:

- Browse to the 'ArcGIS' folder (if you received the Viewer and data on media from MassGIS).
- Run (Double-click) the installation file: **Install_DataViewer.bat**
(This will pop up one or more DOS Windows that will install the Data Viewer into ArcMap. The DOS window will disappear when finished.)

When you open ArcMap the toolbar is turned off:

- Go to View ->Toolbars and check the box beside the new toolbar: MassGIS SHP Data Viewer 9.x (v.2.1), to turn it on.



Now any time you open ArcMap you should have access to the MassGIS SHP DataViewer 9.x(v.2.1) toolbar .

Uninstalling the MassGIS Data Viewer Toolbar for ArcMap 9.x

If you ever need to remove the Data Viewer (error from loading, newer versions, etc) you need to close ArcMap and run the file **Uninstall_DataViewer.bat**.

For information on how to use the MassGIS ArcGIS 9.x Data Viewer, see the document [viewer_9.pdf](#).

Installing the MassGIS Data Viewer Toolbar for ArcMap 10

(This section applies to a new install of data and the Viewer toolbar as well as upgrading the Viewer from ArcMap 9.x to 10)

The toolbar for ArcMap 10 provides the same functionality as the toolbar for ArcMap 9.x. The difference is the way it is installed. The toolbar for ArcMap 10 is based on an Add-In file, not a .dll. To install the toolbar for ArcMap 10:

- Double-click the file **AZAddIn.esriAddIn**
This will “register” the toolbar with your PC, placing a copy of the Add-In in a folder in the user’s profile area.
- Open ArcMap, go to Customize -> Toolbars and check on ‘Data viewer Toolbar’.

When you click on the toolbar’s ‘A’ button the first time, you will be presented with a dialog box in which you will need to select a few connection settings.

Connection Settings

Database Type

SDE Shapefiles File GeodB

SDE Connection Settings

Server Name:
gisprora1

Instance:
55152

User Name:
massgis

Password:
massgis

Version:
sde.DEFAULT

Lyr_files Folder..

Theme Table Locations

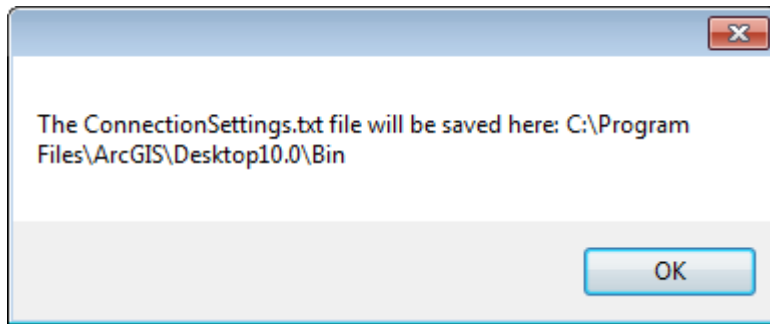
Theme Table...

OK

Click on the type of data you have previously installed (for example, Shapefiles)

Then hit the 'Theme Table...' button to navigate to the location of the themeinv.dbf file you have in the 'ArcGIS' folder where you originally installed the data and Viewer files.

Click 'OK'. You will then see a pop-up message telling you the location of a newly created file called ConnectionSettings.txt.



The ConnectionSettings.txt file stores the settings you just chose in the Connection Settings dialog. When you click on the 'A' button the Viewer will read from that file in order to find the proper data files to load into ArcMap.

Note: Currently, the location of this text file may vary from user to user or machine to machine, as it is set to be saved in Environment.CurrentDirectory, which means "the directory from which this process starts." If in the future you open or save map documents (MXDs) in other folders, in later ArcMap sessions when you hit the 'A' button for the first time you may be prompted to enter information into the Connection Settings dialog again, and another ConnectionSettings.txt file will be created in that location.

Contact: Michael Trust at 617-619-5615 or via Email at michael.trust@state.ma.us.
MassGIS, 7/6/2011.