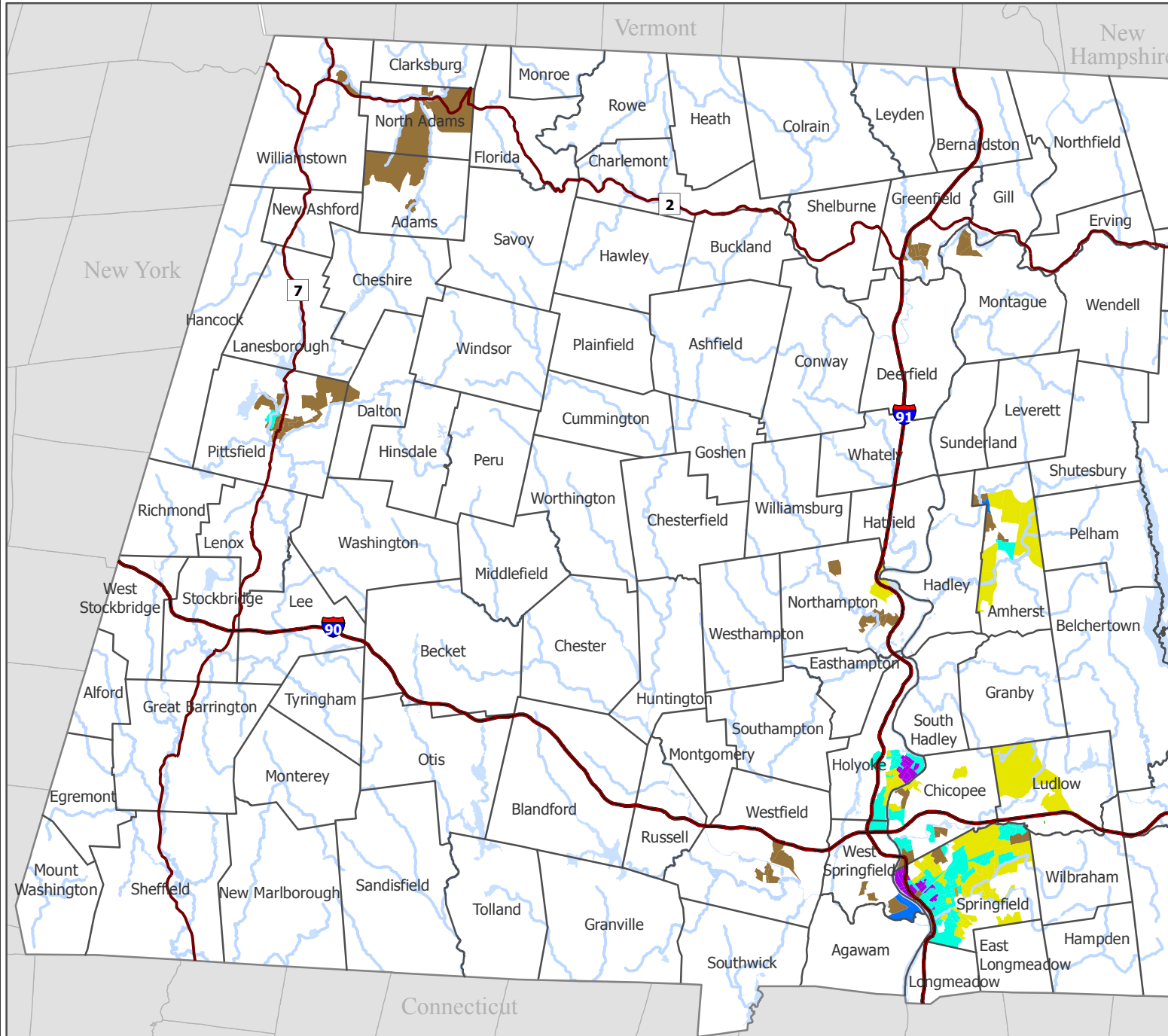


# Environmental Justice Populations

## Western Region



### Massachusetts Environmental Justice Criteria:

Environmental Justice (EJ) populations are determined by identifying all Census 2000 block groups that meet any of the following criteria:

<b>Income</b>	Households earn 65% or less of statewide median household income
<b>Minority population</b>	25% or more of residents belong to a minority group
<b>Foreign-born</b>	25% or more of residents are foreign-born
<b>English proficiency</b>	25% or more of residents lack English language proficiency

#### Populations meeting one EJ criterion

- income
- minority population
- foreign-born

#### Populations meeting two EJ criteria

- income and minority population
- income and English proficiency
- income and foreign-born
- minority population and English proficiency
- minority population and foreign-born

#### Populations meeting three EJ criteria

- income, minority population and English proficiency
- income, minority population and foreign-born
- minority population, English proficiency and foreign-born
- income, English proficiency and foreign-born

#### Populations meeting all four EJ criteria

- income, minority population, English proficiency and foreign-born

For more information contact:  
Energy and Environmental Affairs  
617-626-1000

