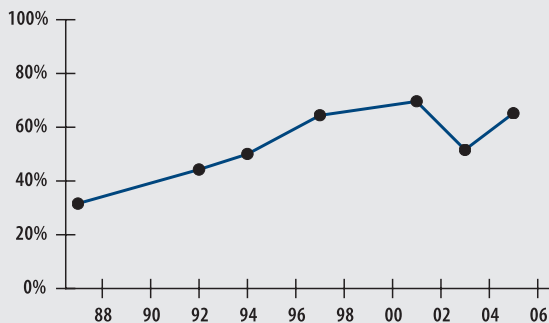
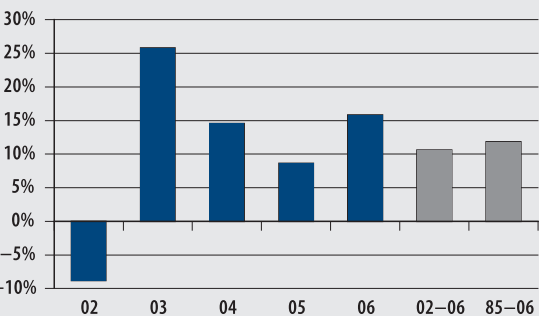


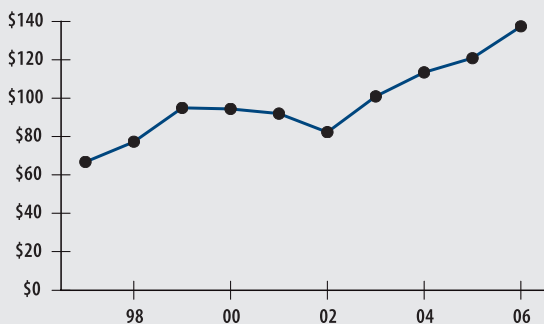
► **Funded Ratio (1987-2006)**



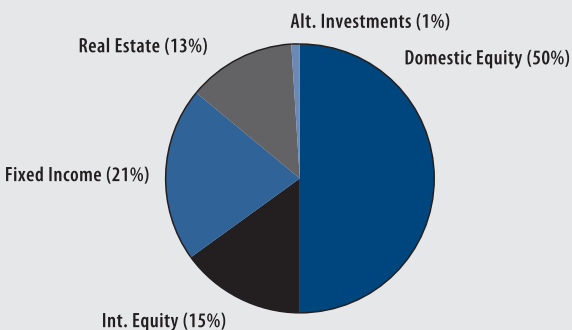
► **Investment Return (2002-2006, 5 Year and 22 Year Averages)**



► **Asset Growth (1997-2006) (Market Value in Millions)**



► **Asset Allocation (12/31/06)**



► **ACTUARIAL**

• Funded Ratio	65.2%
• Date of Last Valuation	01/05
• Actuary	Stone
• Assumed Rate of Return	8.00%
• Funding Schedule	2.45% Increasing
• Year Fully Funded	2023
• Unfunded Liability	\$60.8 M
• Total Pension Appropriation (Fiscal 2007)	\$7.5 M

	<b>Active</b>	<b>Retired</b>
• Number of Members	827	640
• Total Payroll/Benefit	\$30.7 M	\$10.9 M
• Average Salary/Benefit	\$37,100	\$17,000
• Average Age	47	73
• Average Service	9.9 years	NA

► **INVESTMENT**

**Domestic Equity**

- Boston Company Dynamic Equity Fund
- Independence Investments, LLC
- RhumbLine S&P 500 Pooled Index Fund

**International Equity**

- SSgA All International Allocation Common Trust Fund

**Domestic Fixed Income**

- Pyramid Core Plus Commingled Pool

**Real Estate**

- Intercontinental Real Estate Investment Fund III, LLC
- PRIT

**Alternative Investments**

- INVESCO Venture Partnership Fund IV, L.P.

**Consultant**

- Segal Advisors

**Custodian**

- State Street

► <b>2006 Return</b>	<b>15.83%</b>
► <b>2006 Target</b>	<b>8.50%</b>
► <b>2006 Market Value</b>	<b>\$137.4 M</b>
► <b>2002-2006 (Annualized)</b>	<b>10.59%</b>
► <b>1985-2006 (Annualized)</b>	<b>11.85%</b>