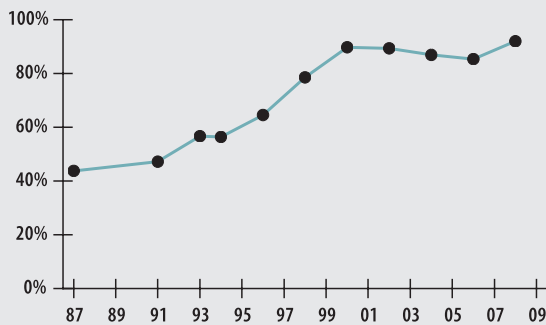
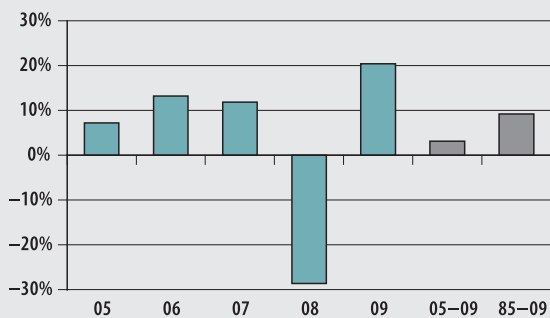


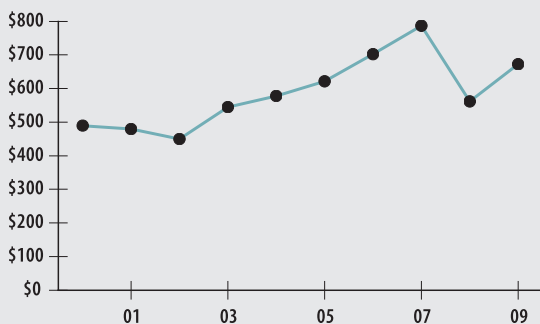
Funded Ratio (1987-2009)



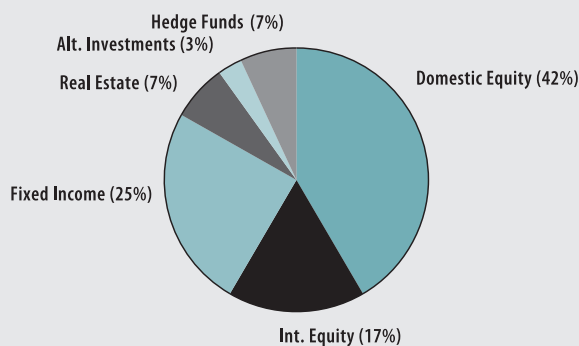
Investment Return (2005-2009, 5 Year and 25 Year Averages)



Asset Growth (2000-2009) (Market Value in Millions)



Asset Allocation (12/31/09)



ACTUARIAL

• Funded Ratio	92.0%
• Date of Last Valuation	01/08
• Actuary	Segal
• Assumed Rate of Return	8.50%
• Funding Schedule	2.1% Increasing
• Year Fully Funded	2013
• Unfunded Liability	\$67.0 M
• Total Pension Appropriation (Fiscal 2010)	\$27.5 M

	Active	Retired
• Number of Members	4,119	1,756
• Total Payroll/Benefit	\$235.8 M	\$40.3 M
• Average Salary/Benefit	\$57,200	\$23,000
• Average Age	45	NA
• Average Service	10.6 years	NA

INVESTMENT

Domestic Equity

- Columbia Management Group, Inc.
- Copper Rock Capital Partners, LLC
- Fred Alger Management, Inc.
- Loomis, Sayles & Company, L.P.
- Marvin & Palmer Associates, Inc.
- MFS Institutional Advisors, Inc.
- Pyramis Large Cap Core 130/30 Fund
- SSgA Russell 1000 Growth Index NL Fund
- SSgA S&P 500 Flagship Fund
- WEDGE Capital Management, LLP

International Equity

- Lazard Emerging Markets Equity Portfolio
- RBC GAM International Fund
- SSgA MSCI-EAFE Index SL Fund

Domestic Fixed Income

- Income Research & Management
- MacKay-Shields Financial Corporation
- Pyramis Broad Market Duration Portfolio

International Fixed Income

- Brandywine Global Fixed Income Fund

Real Estate

- AEW Partners V, L.P.
- Carey Corporate Properties Associates Fund 15
- Hancock ForesTree V Fund
- Hancock Timberland X Fund

- Landmark Real Estate Partners VI, LP
- Penn Square Global Real Estate Fund II
- PRIT
- UBS (US) Trumbull Property Fund LP

Alternative Investments

- Ascent Venture Partners II, III, IV, & V L.P.
- BlackRock Diversified Private Equity Program II
- Charles River Partnership VII & VIII
- Hamilton Lane Private Equity Fund VI, LP

Hedge Funds

- PRIT

Consultant

- Segal Advisors

Custodian

- State Street

▶ 2009 Return	20.45%
▶ 2009 Target	9.00%
▶ 2009 Market Value	\$672.3 M
▶ 2005-2009 (Annualized)	3.16%
▶ 1985-2009 (Annualized)	9.25%