

RAILROAD CROSSINGS

A round warning sign will usually alert you to an upcoming railroad crossing. When you see this sign, slow down and prepare to stop. If you see or hear a train approaching, do not speed up and try to beat the train to the crossing.



The point at which train tracks cross a road is marked with a white crossbuck sign. If more than one track crosses a road, the number of tracks is posted below the crossbuck.



A railroad crossing may also feature red flashing lights, a bell, and a red-and-white striped gate that is lowered across the roadway when a train is passing. If the lights begin to flash, you must stop at least 15 feet before the light post or gate and remain stopped until the gate raises and the lights stop flashing. Failure to stop is a violation that carries a heavy fine. Even if you don't see a train approaching, never drive around a lowered gate or ignore the flashing lights.



PAVEMENT MARKINGS

Lines, symbols, and words painted on a roadway help to direct riders and control traffic flow. You must know what the different lines and colors mean and obey them as you would traffic signs or signals.

White and yellow lines are used along pavement edges and between lanes to keep vehicles in line. These lines may be solid or broken (long dashes), single or double. A solid white or solid yellow line that turns into a dotted line (short dashes) is a continuation of the line through an intersection or a highway interchange.

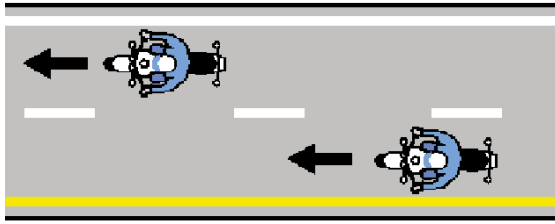
Unless you are turning, exiting a highway, or changing lanes, always stay between the lines marking your lane.

WHITE LANE LINES

White lane lines separate lanes of traffic moving in the same direction. Single white lines may also mark the right edge of the pavement.

BROKEN WHITE LANE LINE

A broken white lane line separates two lanes traveling in the same direction. Once you have signaled, and if it is safe to do so, you may cross this line when changing lanes.



SOLID WHITE LANE LINE

A solid white lane line marks the right edge of the roadway or separates lanes of traffic moving in the same direction. You may travel in the same direction on both sides of this line, but you should not cross the line unless you must do so to avoid a hazard.

DOUBLE SOLID WHITE LANE LINE

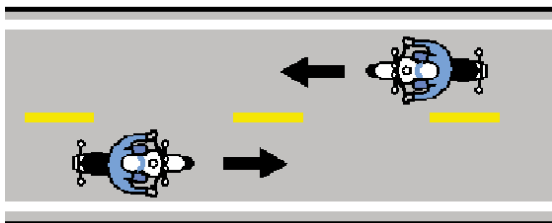
A double solid white line separates two lanes of traffic going in the same direction. Crossing a double solid white line is prohibited.

YELLOW LANE LINES

Yellow lane lines separate lanes of traffic moving in opposite directions. Single yellow lines may also mark the left edge of the pavement on divided highways and one-way streets.

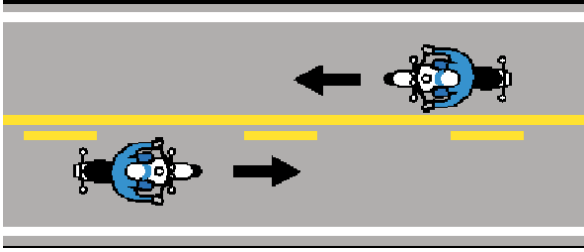
BROKEN YELLOW LANE LINE

A broken yellow lane line separates lanes of traffic moving in opposite directions. Stay to the right of the line, unless you are passing a vehicle in front of you. When passing, you may cross this line temporarily when it is safe to do so.



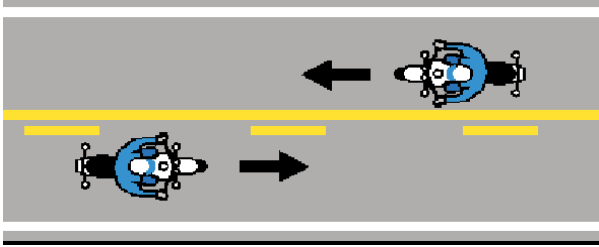
DOUBLE YELLOW LANE LINES: ONE SOLID, ONE BROKEN

As with all yellow lane lines, the one-solid-one-broken combination keeps opposing lanes of traffic separated. If the solid yellow line is closer to you, you may not cross the double yellow line. If the broken line is closer to you, you may cross the line only to pass another vehicle and only when it is safe to do so.



DOUBLE YELLOW LANE LINES: BOTH SOLID

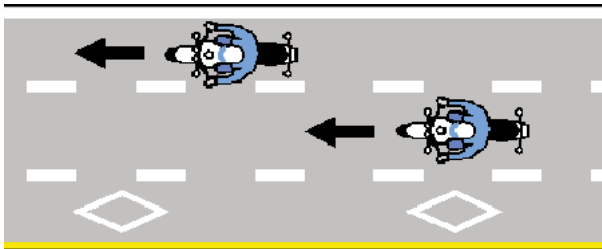
Two solid yellow lane lines prohibit vehicles moving in either direction from crossing the lines to pass another vehicle. You may not cross these lines unless turning left when it is safe to do so.



WORDS AND SYMBOLS

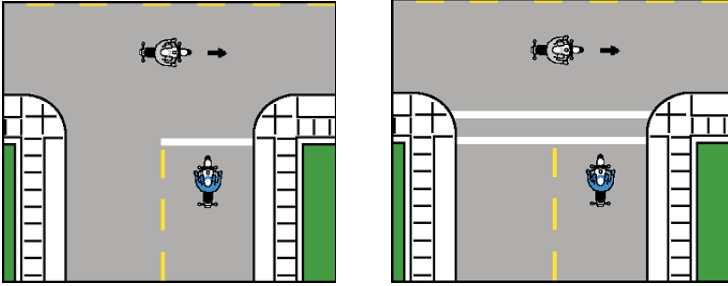
Words or symbols may be painted on roadway surfaces to help guide, warn, or regulate drivers. Words or symbols are often used with traffic signs, signals, and other pavement markings. White arrows show lane directions or restrictions.

A white diamond alerts you to a special lane restriction, like high-occupancy vehicle (HOV) only, bus only, or bicycle only.



STOP LINES AND CROSSWALKS

An intersection or a pedestrian crossing controlled by a stop sign, yield sign, traffic signal, or traffic officer may have a solid white STOP line painted across it. You must stop your vehicle behind this line.



A crosswalk is a pair of white lines painted across a lane that guides pedestrians from one side of the road to the other. A painted crosswalk is also a warning to drivers that pedestrians are crossing the road at that point. Crosswalks may have diagonal or vertical lines painted between the two main lines for added emphasis.

LANE USE & RESTRICTIONS

USING LANES

Always use traffic lanes as they are defined by pavement markings and road signs. Many intersections have special lanes marked for turns. Follow the rules of the road, using the proper lanes for turning and riding straight ahead.

On roadways with two or more lanes in your travel direction, use the right lane for riding unless...

- You are passing another vehicle.
- You are making a left turn.
- The right lane is blocked.



Additional rules pertaining to proper lane use follow below:

- As a general rule, do not use a highway breakdown lane as a travel or passing lane. On some highways, however, motorists may use the breakdown lane as a travel lane during "rush hour."
- Never change lanes in the middle of an intersection. It is illegal and dangerous.
- If you come to a curve in the road and cannot see ahead, keep to the right and slow down.