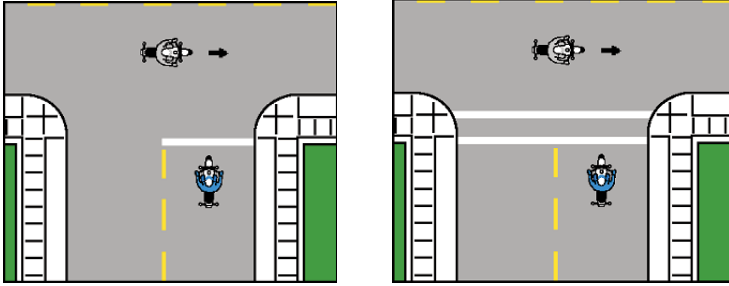


## STOP LINES AND CROSSWALKS

An intersection or a pedestrian crossing controlled by a stop sign, yield sign, traffic signal, or traffic officer may have a solid white STOP line painted across it. You must stop your vehicle behind this line.



A crosswalk is a pair of white lines painted across a lane that guides pedestrians from one side of the road to the other. A painted crosswalk is also a warning to drivers that pedestrians are crossing the road at that point. Crosswalks may have diagonal or vertical lines painted between the two main lines for added emphasis.

## LANE USE & RESTRICTIONS

### USING LANES

Always use traffic lanes as they are defined by pavement markings and road signs. Many intersections have special lanes marked for turns. Follow the rules of the road, using the proper lanes for turning and riding straight ahead.

On roadways with two or more lanes in your travel direction, use the right lane for riding unless...

- You are passing another vehicle.
- You are making a left turn.
- The right lane is blocked.



Additional rules pertaining to proper lane use follow below:

- As a general rule, do not use a highway breakdown lane as a travel or passing lane. On some highways, however, motorists may use the breakdown lane as a travel lane during "rush hour."
- Never change lanes in the middle of an intersection. It is illegal and dangerous.
- If you come to a curve in the road and cannot see ahead, keep to the right and slow down.