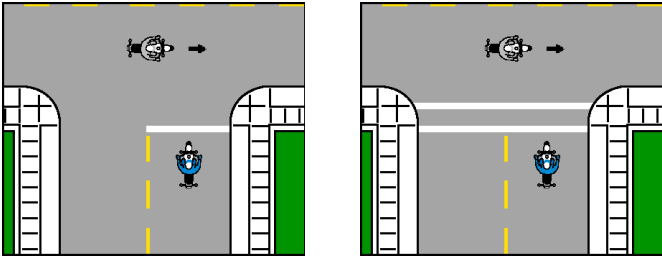


STOP LINES AND CROSSWALKS

An intersection or a pedestrian crossing controlled by a stop sign, yield sign, traffic signal, or traffic officer may have a solid white **STOP** line painted across it. You must stop your vehicle behind this line.



A crosswalk is a pair of white lines painted across a lane that guides pedestrians from one side of the road to the other. A painted crosswalk is also a warning to drivers that pedestrians are crossing the road at that point. Crosswalks may have diagonal or vertical lines painted between the two main lines for added emphasis.

LANE USE & RESTRICTIONS

USING LANES

Always use traffic lanes as they are defined by pavement markings and road signs. Many intersections have special lanes marked for turns. Follow the rules of the road, using the proper lanes for turning and riding straight ahead.

On roadways with two or more lanes in your travel direction, use the right lane for riding unless...



- You are passing another vehicle.
- You are making a left turn.
- The right lane is blocked.

Additional rules pertaining to proper lane use follow below:

- As a general rule, do not use a highway breakdown lane as a travel or passing lane. On some highways, however, motorists may use the breakdown lane as a travel lane during "rush hour."

- Never change lanes in the middle of an intersection. It is illegal and dangerous.
- If you come to a curve in the road and cannot see ahead, keep to the right and slow down.

SPECIAL RULES FOR MOTORCYCLES

- Do not ride along pavement lines or between lanes of traffic.
- Ride no more than two abreast.
- Unless your motorcycle can travel safely at minimum posted speeds, do not travel on highways or expressways.

RESTRICTED LANES

You must not ride in lanes posted as restricted, except when preparing for a turn.

RIDING ON HIGHWAYS

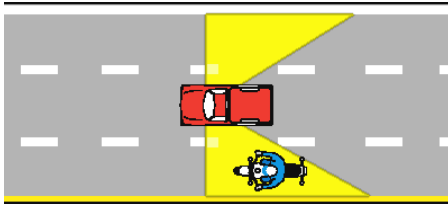
Riding on highways, expressways, and freeways can make any new motorcycle rider nervous. The following are some useful tips for riding on such roadways.

ENTERING AND EXITING THE HIGHWAY

- Make sure you are in the proper lane well in advance so you can safely enter or exit the highway.
- Yield the right-of-way to drivers already on the highway.
- As you approach and enter a highway travel lane, increase your speed to match that of vehicles already on the road.
- If you miss your exit, do not stop. Never back up on the highway. Get off the highway at the next exit and look for signs showing you how to rejoin the road in the other direction.
- Be sure to signal your exit at least 500 feet before you reach the exit ramp.
- As you leave the highway and drive along the exit ramp, slow to the posted exit ramp speed limit.

SAFE & RESPONSIBLE RIDING

- Make sure your vehicle is in good operating order and can maintain highway speeds.
- Stay to the right and only use the left lane for passing. If you are traveling on an expressway with three lanes, treat the far right lane as a slower-speed through lane, the middle lane as a faster through lane, and the far left lane as the passing lane.
- Use your mirrors and your directional signals when changing lanes. Remember these three steps: (1) look, (2) signal, (3) move. Also, check your blind spots before making your move.
- Do not ride in another operator's blind spot. If you see yourself in another operator's blind spot, safely ride through the blind spot as quickly as you can.
- Be alert for cars entering the highway and any vehicles or pedestrians using the breakdown lane.
- Do not weave in and out of traffic.
- Be aware of road construction signs, work crews, and signs requiring you to reduce speed or change lanes.
- Avoid highway hypnosis. If you've been riding for a long period and feel drowsy, you should get off the highway at the next exit, rest stop, or service area.
- If you plan to ride a long distance, stop and stretch after every 2 hours or every 100 miles.



RULES FOR PASSING



In general, the law requires you to ride on the right side of the road. When passing is allowed, you should pass on the left. You should pass a pedestrian, bicyclist, or motor vehicle *only* when it is necessary and safe to do so. **You may not exceed the speed limit when passing.** If you have any doubt, do not pass. *Never* use a breakdown lane, the shoulder of a road, or a sidewalk for passing another vehicle.

INTERSECTIONS

It is illegal to block an intersection with your motorcycle. When riding through an intersection, you must follow any directions given to you by signs or traffic signals. **You may *not* enter an intersection or ride across a crosswalk unless there is enough room to safely ride through to the other side.** Obstructing the paths of other vehicles or pedestrians in an intersection or a crosswalk causes traffic jams and violates traffic law.