



David E. Pierce, PhD.
Director

Commonwealth of Massachusetts

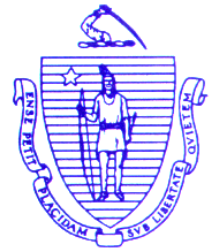
Division of Marine Fisheries

251 Causeway Street, Suite 400

Boston, Massachusetts 02114

(617) 626-1520

fax (617) 626-1509



Charles D. Baker
Governor

Karyn E. Polito
Lieutenant Governor

Matthew A. Beaton
Secretary

Ronald S. Amidon
Commissioner

Mary-Lee King
Deputy Commissioner

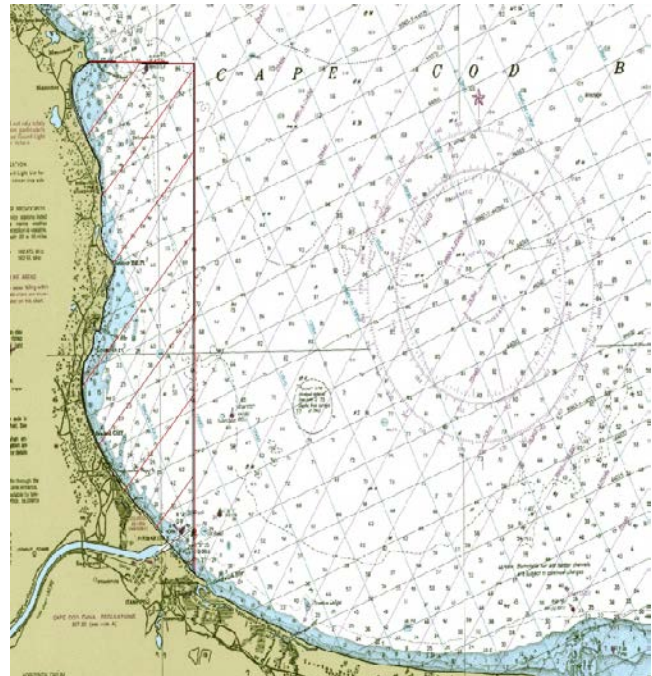
April 9, 2018

Marine Fisheries Advisory

AREA IN SOUTHWESTERN CAPE COD BAY IS SEASONALLY CLOSED TO COMMERCIAL SURF CLAM/OCEAN QUAHOG DREDGE FISHING

At its March 15, 2018 business meeting the Marine Fisheries Advisory Commission approved a recommendation of the Division of Marine Fisheries to seasonally close an area of southwestern Cape Cod Bay to the use of surf clam and ocean quahog dredges. This closure will be in effect annually from May 15 – October 15 within a discrete nearshore area adjacent to Elllisville and the Cape Cod Canal (Plymouth/Sandwich)

The seasonal closed area (map) is encompassed by an imaginary line drawn from Manomet Point in Plymouth, at 41° 55' latitude and 70°32.2' longitude; thence due east for 2.5 miles to where it intersects with a point at 41°55' latitude and 70°29' longitude; thence due south along the 70°29' longitudinal line to where it intersects with the shoreline in the town of Sandwich



A similar closure was implemented on a temporary and emergency basis in August 2017 and was in effect through October 31, 2017. The closure was implemented to will alleviate the gear conflicts between dredge fishermen and lobster trap fishermen that escalated throughout the summer of 2017 and to protect egg-bearing and new-shell lobsters that seasonally utilize this area from potential impacts caused by this dredge gear.

For more information about the management of surf clam/ocean quahog dredge fishery in Massachusetts, contact DMF at 617-626-1520 or visit our website at

www.mass.gov/marinefisheries.