

## **FALL 2005 RESOURCE ASSESSMENT TRAWL SURVEY**

The Marine Fisheries trawl survey provides information for many uses including environmental reviews and groundfish assessments. It is critical to the integrity of the survey that we maintain access to sampling sites.

We ask that all fixed gear fishermen review the attached table of station location details and the accompanying figures, which plot the locations of all selected sample sites from north of Cape Ann to east of Cape Cod. We request that all fixed gear be kept clear of station locations (1.5 n. mi. diameter circle as shown in figure - center point reported in table) for the indicated periods. We will make every attempt to complete stations during the assigned period to minimize inconvenience to fixed gear fishermen. Fishermen can contact the R/V Gloria Michelle on VHF channels 13 or 16 to determine the updated daily schedule. In the event of a delay due to weather, we will resume our schedule as soon as working conditions are safe.

As reported in the past, the DMF Director is prepared to attach restrictions to permit renewals (under 322 CMR 7.01 (7)) mandating that fixed gear not be set on designated trawl survey sites for the dates stipulated. It remains our hope that this action will be unnecessary.

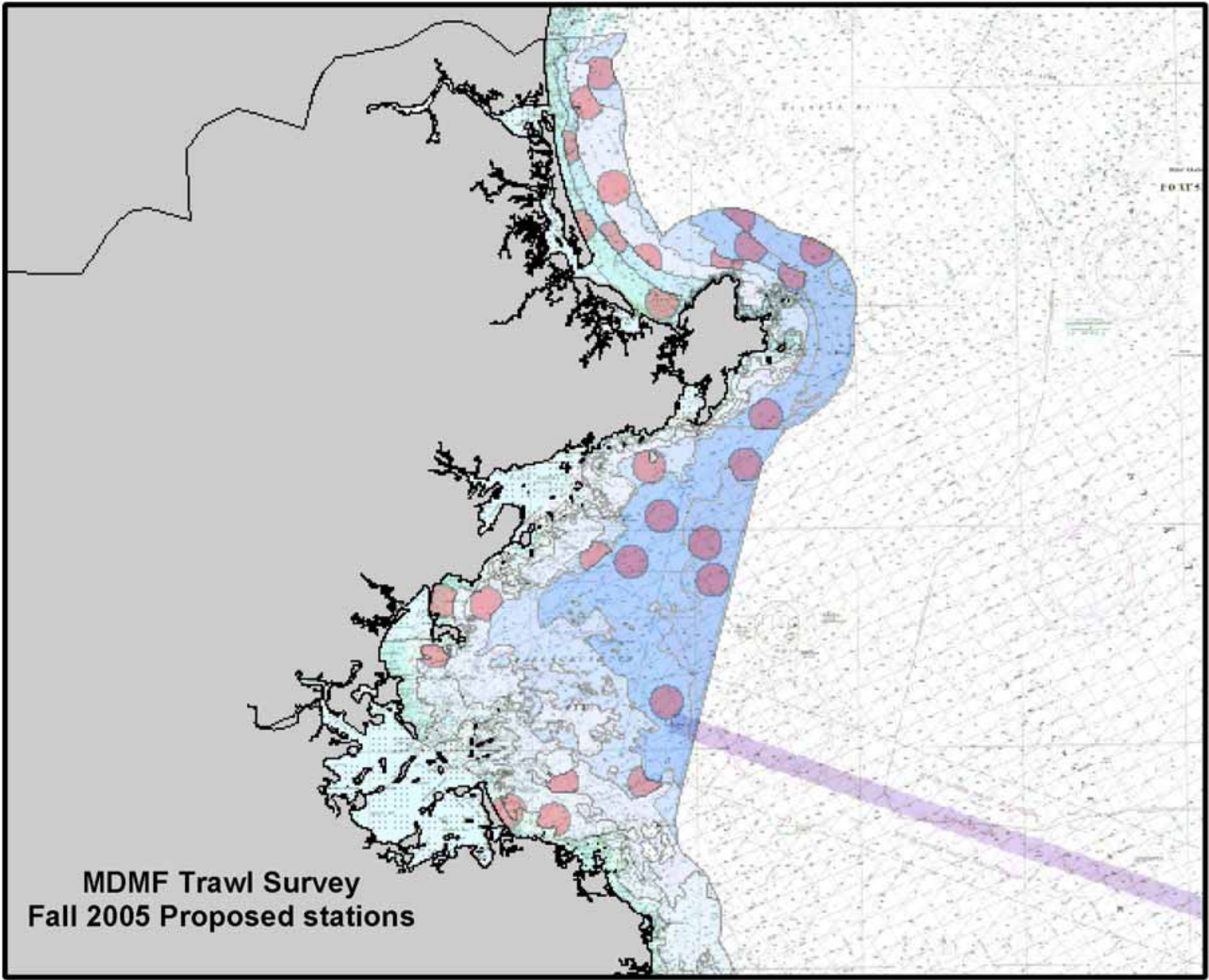
Personnel aboard the NOAA R/V Gloria Michelle (65' western rigged steel stern trawler with a blue hull and white deckhouse) will carefully check each site for marked gear by cruising along a selected tow path at least once before the net is set. Undertaken at 2.5 knots, twenty-minute tows cover approximately 0.8 n mi., generally along a depth contour. We encourage communicating helpful information to the R/V officers (via channels 13 or 16).

Massachusetts Division of Marine Fisheries - 2005 Fall Trawl Survey Station Locations  
 Cape Cod Bay - East of Cape Cod

General Location	General Description	Depth	Range of Dates	Center of Tow Area		
				Latitude	Longitude	Loran
East of Cape Cod	Nauset Harbor	0-30'	13-16 Sept	41°50.20	69°56.04	13791.8/44005.0
	Highlands	0-30'	13-16 Sept	41°58.57	69°59.48	13772.0/44059.1
	E of Peaked Hill Bar	31-60'	13-16 Sept	42°05.05	70°07.17	13786.0/44108.5
	Nauset Beach	31-60'	13-16 Sept	41°45.21	69°54.97	13808.8/43973.8
	Chatham	31-60'	13-16 Sept	41°39.50	69°54.27	13830.7/43938.5
	Nauset Beach	61-90'	13-16 Sept	41°42.51	69°52.56	13807.3/43954.3
	Highlands	61-90'	13-16 Sept	42°01.47	70°00.69	13765.1/44077.8
	N of Peaked Hill Bar	91-120'	13-16 Sept	42°06.09	70°09.46	13794.5/44118.1
	E of Nauset Harbor	91-120'	13-16 Sept	41°50.07	69°53.46	13777.6/44000.5
	E of Nauset Harbor	91-120'	13-16 Sept	41°48.02	69°53.11	13785.1/43987.9
	N of Peaked Hill Bar	121-180'	13-16 Sept	42°06.65	70°09.65	13793.0/44121.6
	N of Peaked Hill Bar	121-180'	13-16 Sept	42°07.55	70°10.66	13794.6/44128.4
	W of Peaked Hill Bar	121-180'	13-16 Sept	42°06.15	70°12.98	13815.3/44124.1
	Cape Cod Bay	Humarock	0-30'	6-8 Sept	42°08.50	70°41.05
Warrens Cove		0-30'	6-8 Sept	41°57.45	70°36.30	13998.0/44110.7
E of Ellisville Harbor		0-30'	6-8 Sept	41°50.83	70°31.20	13996.7/44062.1
E of Sagamore Beach		31-60'	6-14 Sept	41°48.08	70°27.92	13989.1/44040.1
N of Barnstable Harbor		31-60'	6-14 Sept	41°46.69	70°16.77	13928.8/44014.5
N of Barnstable Harbor		31-60'	6-14 Sept	41°47.64	70°15.05	13914.4/44017.7
E of Cape Cod Canal		61-90'	6-14 Sept	41°46.54	70°23.80	13971.3/44024.2
E of Cape Cod Canal		61-90'	6-14 Sept	41°47.48	70°25.50	13977.3/44032.6
SE of Manomet Point		61-90'	6-14 Sept	41°54.19	70°28.50	13965.2/44078.3
NE of Manomet Point		91-120'	6-14 Sept	41°57.16	70°28.99	13951.6/44094.6
Cape Cod Bay		91-120'	6-14 Sept	41°52.97	70°21.51	13928.6/44059.8
SE of Manomet Point		91-120'	6-14 Sept	41°52.50	70°26.60	13961.4/44065.0
E of Green Harbor		121-180'	6-14 Sept	42°03.62	70°31.85	13942.0/44140.2
E of Green Harbor		121-180'	6-14 Sept	42°03.75	70°29.84	13929.1/44137.7
E of Green Harbor		121-180'	6-14 Sept	42°03.22	70°26.35	13910.3/44128.8
Billingsgate shoal		0-30'	6-14 Sept	41°50.49	70°09.56	13869.1/44026.7
W of Great Island		0-30'	6-14 Sept	41°55.66	70°06.08	13824.5/44052.1
W of Griffin Island		31-60'	6-14 Sept	41°56.24	70°07.37	13829.4/44057.5
W of Great Island		31-60'	6-14 Sept	41°54.86	70°07.88	13838.9/44050.1
N of Sesuit Harbor		31-60'	6-14 Sept	41°47.48	70°11.25	13892.6/44011.1
W of Billingsgate		61-90'	6-14 Sept	41°51.78	70°12.92	13882.9/44039.5
S of P-town Harbor		61-90'	13-14 Sept	42°00.40	70°08.39	13815.7/44083.5
S of P-town Harbor		61-90'	13-14 Sept	42°01.26	70°08.71	13813.4/44089.0
SW of Wood End		91-120'	13-14 Sept	41°56.80	70°12.66	13858.2/44069.0
SW of Wood End		91-120'	13-14 Sept	41°57.70	70°15.08	13868.2/44078.0
Cape Cod Bay		91-120'	12-14 Sept	41°55.28	70°18.39	13899.3/44068.8
SW of Wood End		121-180'	13-14 Sept	42°00.32	70°12.66	13841.4/44089.7
W of Wood End		121-180'	13-14 Sept	42°01.35	70°15.44	13853.1/44100.1
W of Wood End		121-180'	13-14 Sept	42°00.93	70°16.96	13864.2/44100.1
W of Race Point		180'+	12-14 Sept	42°04.05	70°22.48	13882.7/44127.3
NW of Race Point		180'+	12-14 Sept	42°06.52	70°22.65	13871.9/44142.0
NW of Race Point		180'+	12-14 Sept	42°06.94	70°25.75	13888.8/44149.6

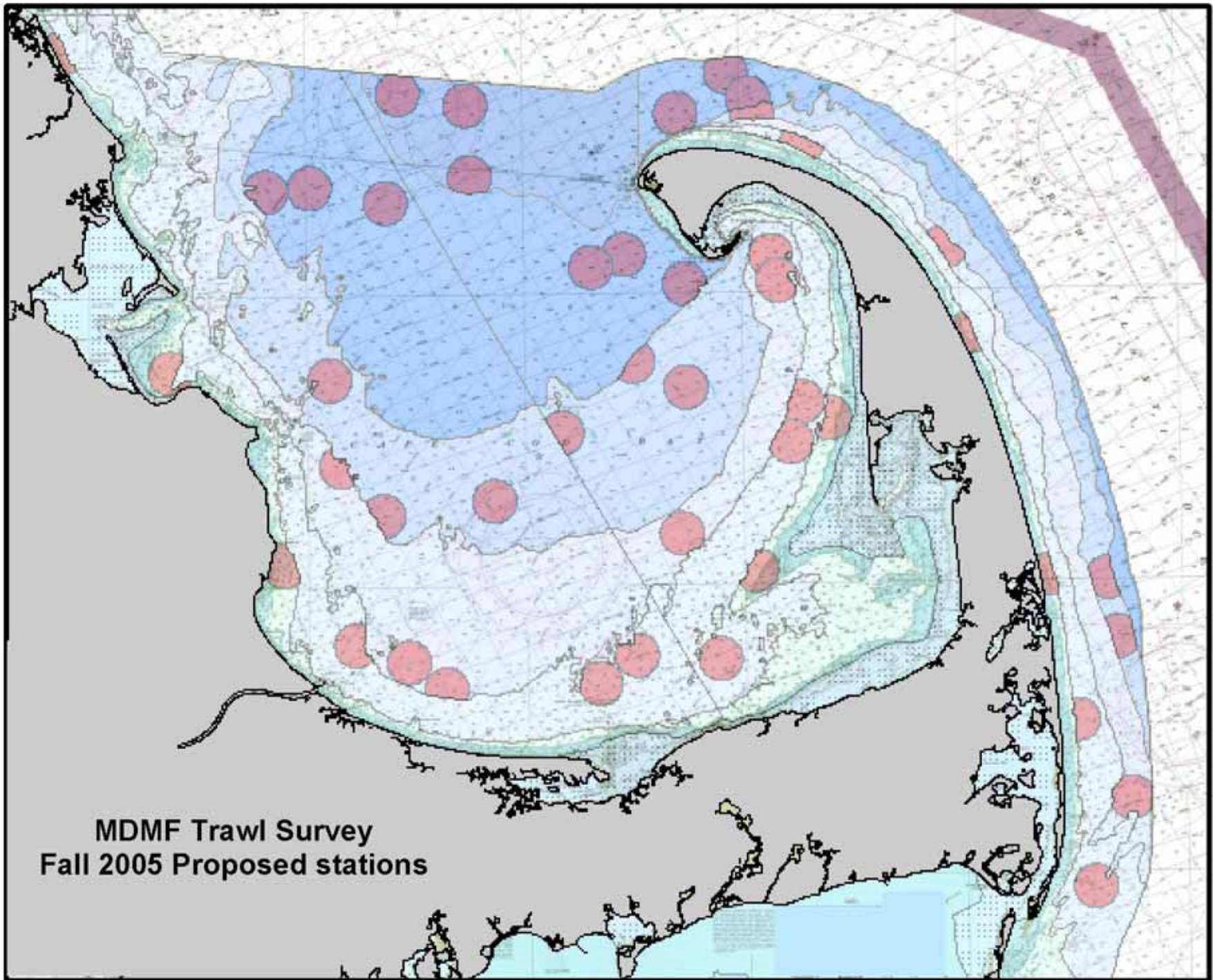
Massachusetts Division of Marine Fisheries - 2005 Fall Trawl Survey Station Locations  
 Massachusetts Bay - North Shore

General Location	General Description	Depth	Range of Dates	Center of Tow Area		
				Latitude	Longitude	Loran
Cape Ann and North	Plum Island	0-30'	10-12 Sept	42°43.86	70°46.94	13834.8/44392.7
	Ipswich Bay	0-30'	10-12 Sept	42°40.37	70°41.90	13820.8/44364.7
	E of Plum Island	31-60'	10-12 Sept	42°43.28	70°44.93	13824.9/44385.9
	E of Plum Island	31-60'	10-12 Sept	42°47.43	70°47.75	13820.8/44412.9
	E of Merrimack River	61-90'	10-12 Sept	42°49.47	70°46.43	13801.0/44420.9
	E of Plum Island	61-90'	10-12 Sept	42°45.61	70°44.82	13811.6/44397.8
	NE of Castle Neck	61-90'	10-12 Sept	42°42.26	70°42.89	13817.0/44376.6
	E of Salisbury Beach	91-120'	10-12 Sept	42°50.80	70°45.58	13788.1/44426.0
	N of Halibut Point	91-120'	10-12 Sept	42°42.29	70°37.88	13784.5/44367.2
	NE of Halibut Point	121-180'	10-12 Sept	42°42.89	70°36.41	13772.0/44367.6
	E of Andrews Point	121-180'	10-12 Sept	42°41.66	70°33.70	13761.3/44356.0
	E of Eastern Point	121-180'	10-12 Sept	42°35.18	70°35.61	13808.1/44325.3
	NE of Dry Salvages	180'+	10-12 Sept	42°42.72	70°32.38	13747.1/44359.2
	N of Halibut Point	180'+	10-12 Sept	42°44.15	70°37.17	13770.0/44375.6
	Mass Bay	Nahant Bay	0-30'	9-13 Sept	42°26.87	70°55.62
Nantasket Beach		0-30'	8-13 Sept	42°17.24	70°51.73	14001.9/44254.9
Nantasket Beach		31-60'	8-13 Sept	42°17.31	70°51.53	14000.1/44254.9
S of Nahant		31-60'	9-13 Sept	42°24.61	70°56.03	13993.4/44305.1
N of Cohasset		31-60'	8-13 Sept	42°16.92	70°48.81	13984.8/44247.6
E of Harding Ledge		61-90'	8-13 Sept	42°18.58	70°48.30	13973.3/44256.3
Nahant Bay		61-90'	9-13 Sept	42°26.73	70°52.86	13962.3/44311.0
NE of Minots Ledge		91-120'	8-13 Sept	42°18.56	70°43.24	13946.4/44229.2
SE of Marblehead		91-120'	9-13 Sept	42°28.77	70°46.06	13908.1/44309.6
S of Middle Ground		91-120'	9-13 Sept	42°32.94	70°42.79	13865.7/44326.5
SE of Salem Sound		121-180'	9-13 Sept	42°30.66	70°42.05	13872.8/44312.6
SE of Salem Sound		121-180'	9-13 Sept	42°28.59	70°43.95	13895.5/44304.8
Outer Mass Bay		121-180'	8-13 Sept	42°22.20	70°41.86	13914.5/44265.2
SE of Eastern Point		121-180'	9-13 Sept	42°32.95	70°36.89	13827.9/44315.6
Outer Mass Bay		180'+	9-13 Sept	42°29.41	70°39.39	13862.2/44300.8
Outer Mass Bay	180'+	9-13 Sept	42°27.73	70°38.96	13868.1/44290.8	



**MDMF Trawl Survey  
Fall 2005 Proposed stations**





MDMF Trawl Survey  
Fall 2005 Proposed stations