



The Commonwealth of Massachusetts

Division of Marine Fisheries

(617) 626-1520 | www.mass.gov/marinefisheries



MAURA T. HEALEY
Governor

KIMBERLEY DRISCOLL
Lt. Governor

REBECCA L. TEPPER
Secretary

THOMAS K. O'SHEA
Commissioner

DANIEL J. MCKIERNAN
Director

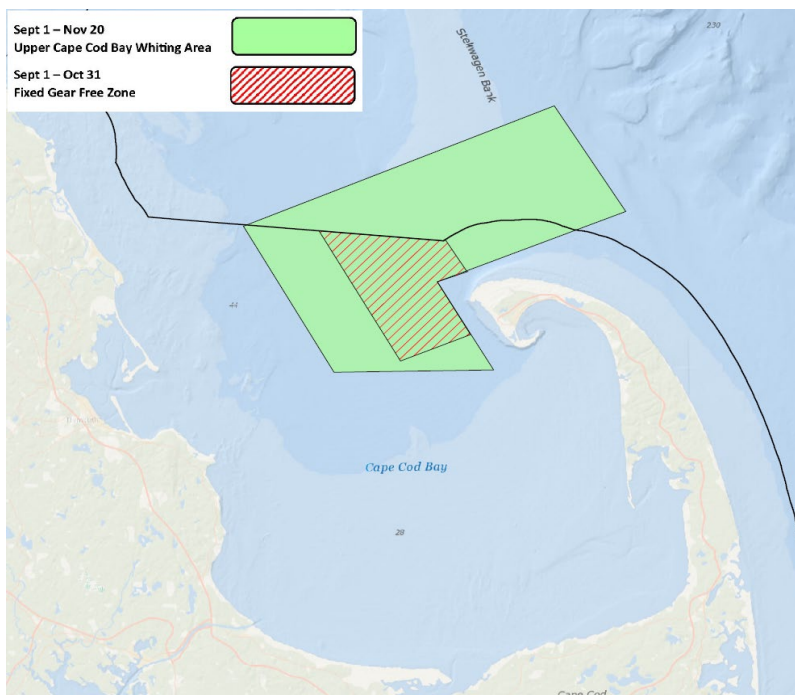
October 6, 2023

Marine Fisheries Advisory

REMINDER: UPPER CAPE COD BAY WHITING AREA AND FIXED GEAR FREE ZONE

This notice serves to remind fixed gear fishers of the seasonal small mesh raised footrope trawl fishery in Upper Cape Cod Bay and the so-called fixed gear free zone just to the west of Provincetown to accommodate this seasonal mobile gear fishery.

From September 1 through November 20, permitted vessels may fish small mesh raised footrope trawls for whiting in the Upper Cape Cod Bay Whiting Area (green area to the right). This area is bounded by a straight line that begins at: (1) 42° 7.85'N by 70° 30.1'W; (2) to 42° 00'N by 70° 24.076'W; (3) to 42° 00'N by 70° 13.225'W; (4) to 42° 4.75'N by 70° 16.95'W; (5) to 42° 8.35'N by 70° 00'W; (6) to 42° 14.05'N by 70° 8.8'W; and (7) back to the initial coordinate. The minimum net mesh size is 2.5" diamond or square throughout the cod end and the raised footrope trawl must meet the various gear specifications at [322 CMR 4.06\(5\)\(b\)\(3\)](#). The retention, possession, and landing of regulated groundfish species (e.g., cod, haddock, winter flounder), summer flounder, skates, ocean pout, sculpin, sea raven, lobsters and edible crabs is prohibited.



From September 1 – October 31, the area immediately to the west of Provincetown within the Upper Cape Cod Bay Whiting Area (red striped area above) is closed to fixed gear fishing (i.e., gillnets and traps). This fixed gear free zone is bounded by a straight line that begins where: (1) 70° 25'W intersects with the state-federal boundary; (2) to 42° 0.59'N by 70° 19.54'W; (3) to 42° 1.89'N by 70° 14.77'W; (4) to 42° 4.71'N by 70° 16.9'W; (5) to 42° 5.26'N by 70° 14.94'W; (6) to where 70° 16.33 intersects with the state-federal boundary; and (7) then following that state federal boundary back to the initial point. If you have fixed gear in this area, please remove it as expediently as possible and do not place it back within the area until November 1.

For more information, visit our website at www.mass.gov/marinefisheries.