



The Commonwealth of Massachusetts Division of Marine Fisheries

(617) 626-1520 | www.mass.gov/marinefisheries



MAURA T. HEALEY
Governor

KIMBERLEY DRISCOLL
Lt. Governor

REBECCA L. TEPPER
Secretary

THOMAS K. O'SHEA
Commissioner

DANIEL J. MCKIERNAN
Director

January 18, 2025

Marine Fisheries Advisory

Notice to Lobster Fishers and Mariners: Large Aggregation of North Atlantic Right Whales Present on Jeffreys Ledge

Seventy-five endangered North Atlantic right whales (NARW) were observed this week just off the western edge of Jeffreys Ledge, centered approximately near position 43° N, 70° 07' W (Figure 1). Click [here](#) for an interactive right whale observation map. There is a substantial amount of lobster gear in the immediate vicinity that poses an acute entanglement risk to the whales. **DMF strongly urges any lobster fishers with gear in the vicinity of Jeffreys Ledge to move their gear to another area as soon as possible and keep away from this area until surveys indicate that the whales have moved on.** This large surface-active group of NARW's is also at a substantial risk of a vessel strike. NOAA Fisheries recently initiated a voluntary slow speed zone (Figure 2), called a Dynamic Management Area (DMA), where mariners are requested to reduce their speed to 10 knots to protect the whales. The DMA is in effect through January 27. **DMF strongly urges lobster fishers and all mariners transiting this area to use extreme caution and not exceed speeds of 10 knots.**

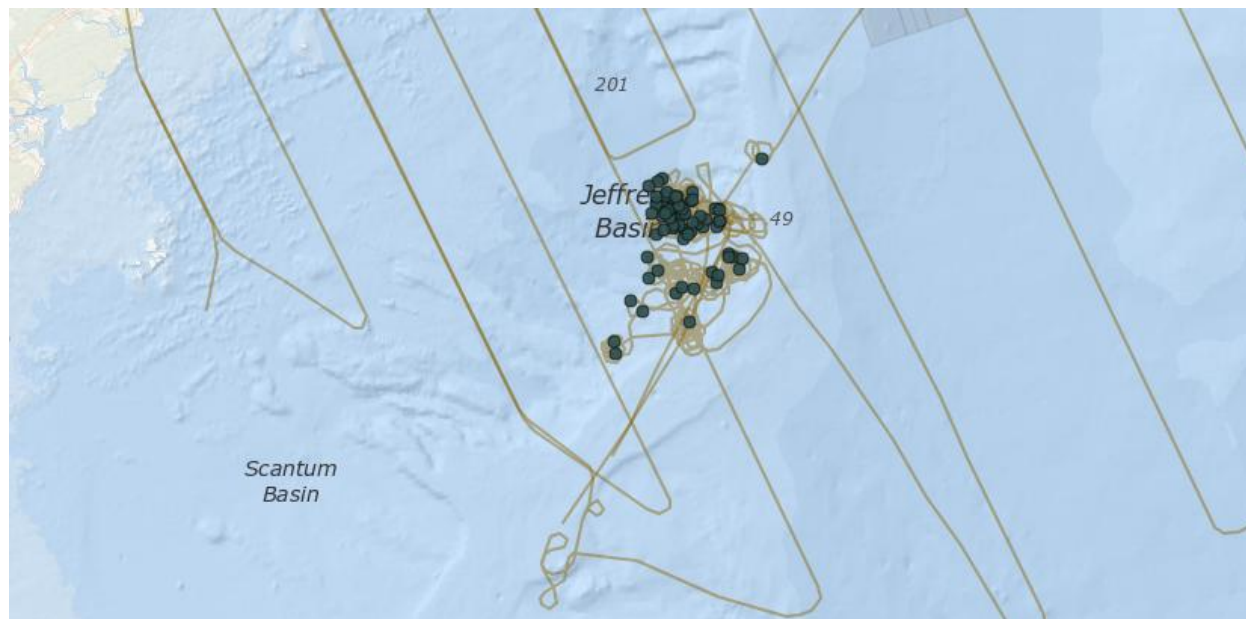


Figure 1: Right whale sighting on Jeffreys Ledge January 1 to January 17, 2025 (n = 75)



Figure 2: NOAA Fisheries Voluntary Dynamic Management Area

For more information on Right Whale Slow Zones and Dynamic Management Areas, click [here](#).