



EAST-WEST PASSENGER RAIL STUDY

Study Advisory Committee Meeting #1
December 18, 2018

Meeting Agenda

- Introductions 1:00
- Study and Committee Overview
1:20
- Preview of Study Context 1:30
- Goals Exercise & Discussion
2:00
- Identifying & Analyzing Alternatives 2:20
- Next Steps 2:40
- Public Comment 2:50

Introductions

- Name
- Who you are representing
- What is the one most important outcome you would hope to achieve from an East-West passenger rail service?

Study and Committee Overview

Study Overview

Impetus: A 2018 State Rail Plan recommendation to update earlier analyses and present a side by side comparison of high-speed rail to other alternatives

Purpose: Conduct an evaluation of the benefits, costs, and impacts of a range of alternatives for rail service between Boston and Pittsfield

Tasks:

- Assess context
- Identify and analyze up to six alternatives
- Develop framework for next steps

Timeframe: 12-18 months

Cost: \$1 million

Advisory Committee Overview

- Includes individuals representing diverse perspectives from Boston to Pittsfield
 - Owners/operators along the corridor
 - Legislative officials
 - State officials
 - Regional planning agencies
 - Key municipalities
 - Business groups
- Committee will provide jurisdictional, policy, technical, and/or administrative input in advance of major decisions

Advisory Committee Responsibilities

- Share information relevant to the study.
- Attend the meetings and actively participate and engage, while being respectful of others time.
- Review information and provide timely feedback.
- Serve as conduit for broader public involvement.



Advisory Committee Input

Meeting 1 – Today

- Study Context
- Goals and Objectives

Meeting 2 – Spring 2019

- Alternatives Screening Criteria
- 6 Possible Preliminary Alternatives

Meeting 3 – Summer 2019

- Preliminary Findings
- Proposed 3 Final Alternatives

Meeting 4 – Fall 2019

- Alternatives Analysis Outcomes
- Next Steps

Preview of Study Context

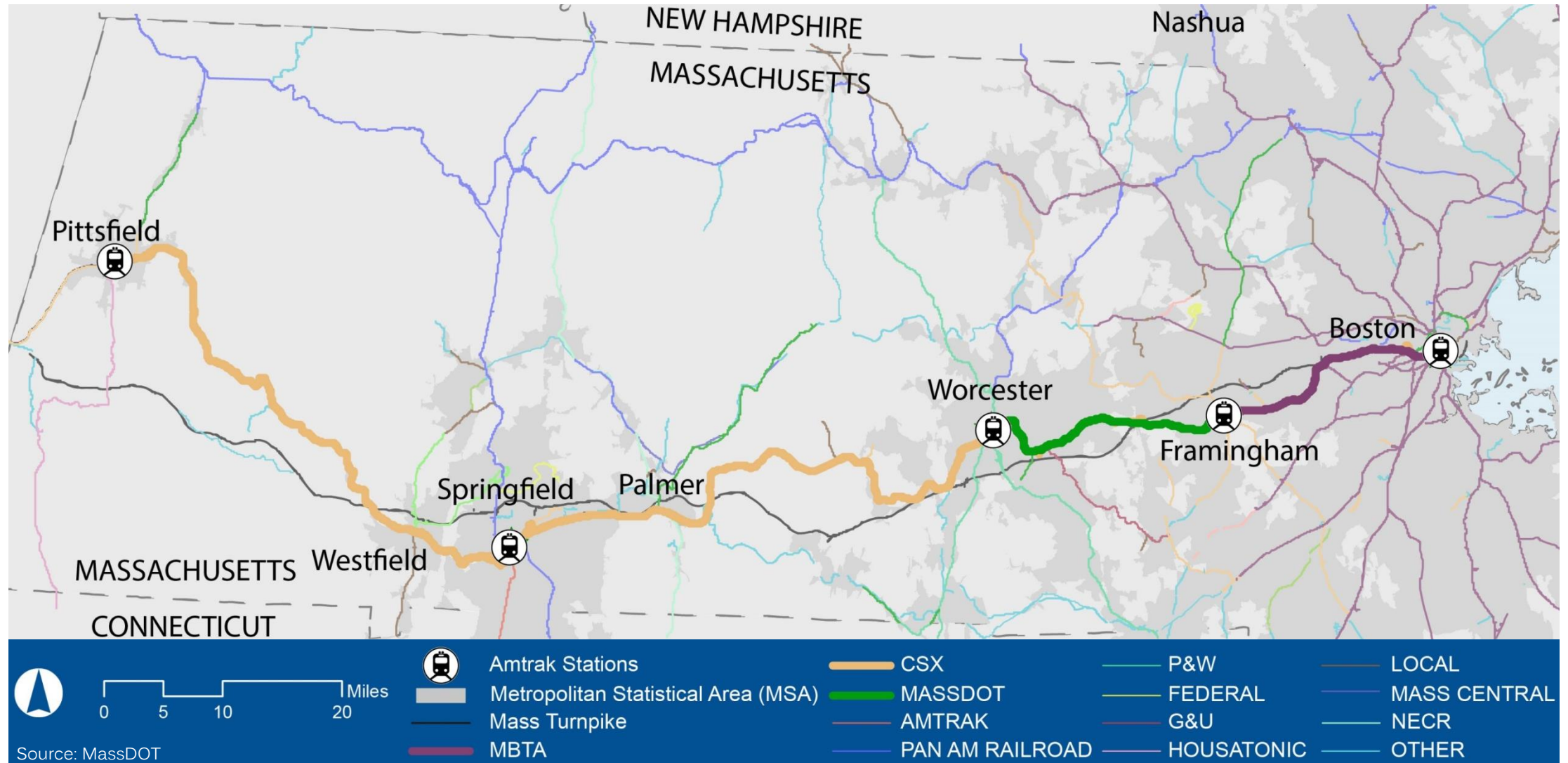
Related Planning and Infrastructure Projects

Market Analysis

Conditions Assessment

Case Studies

Study Corridor



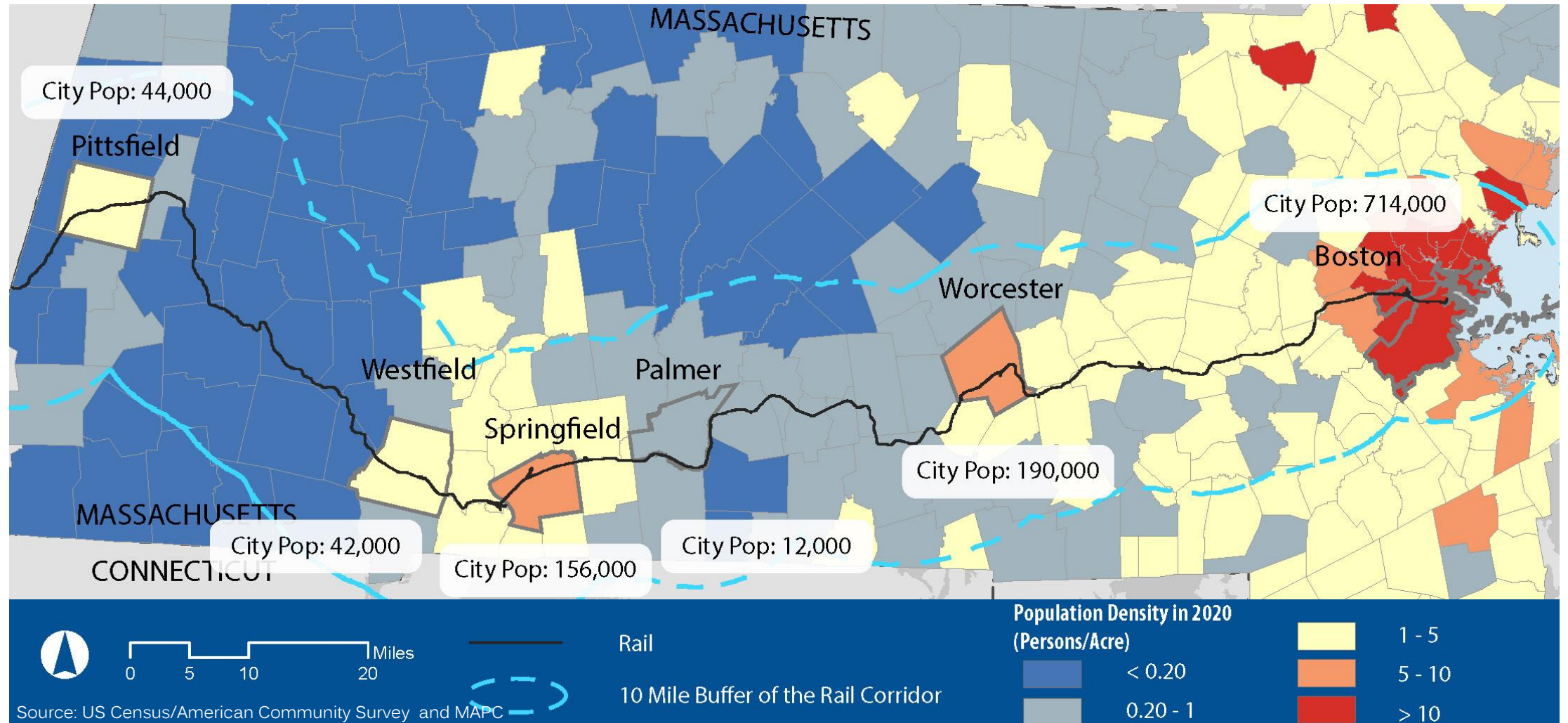
Related Planning and Infrastructure Projects

- Massachusetts State Rail Plan.
- MBTA Rail Vision.
- New Haven – Hartford – Springfield Rail Program (NHHS).
- Northern New England Intercity Rail Initiative (NNEIRI).
- Northeast Corridor (NEC) Future.
- South Station Expansion.
- Springfield Union Station.
- State Freight Plan.
- Worcester Triple Tracking Study.
- Worcester Union Station.

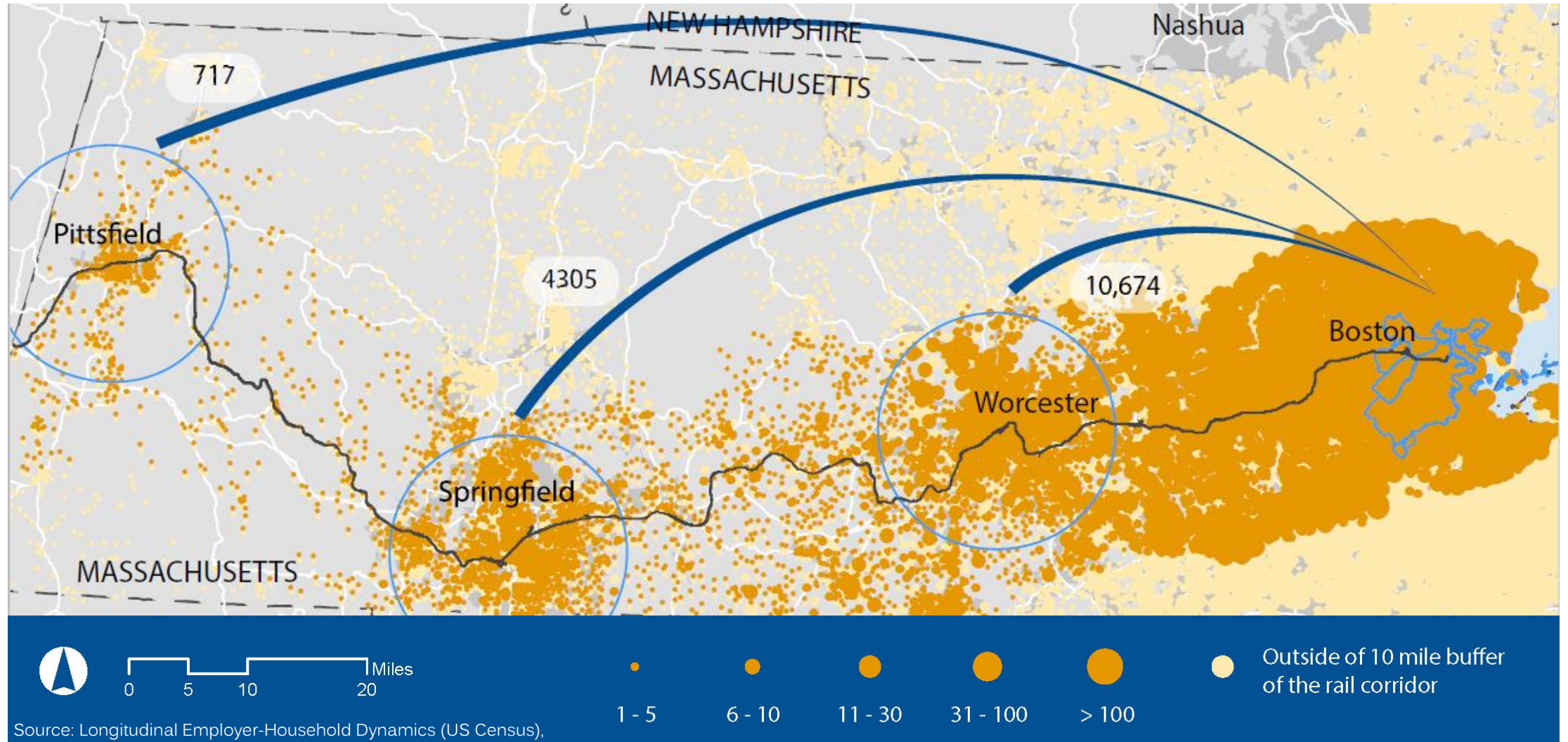
COMMITTEE ACTION

Send us information on local initiatives and data that are relevant to this effort.

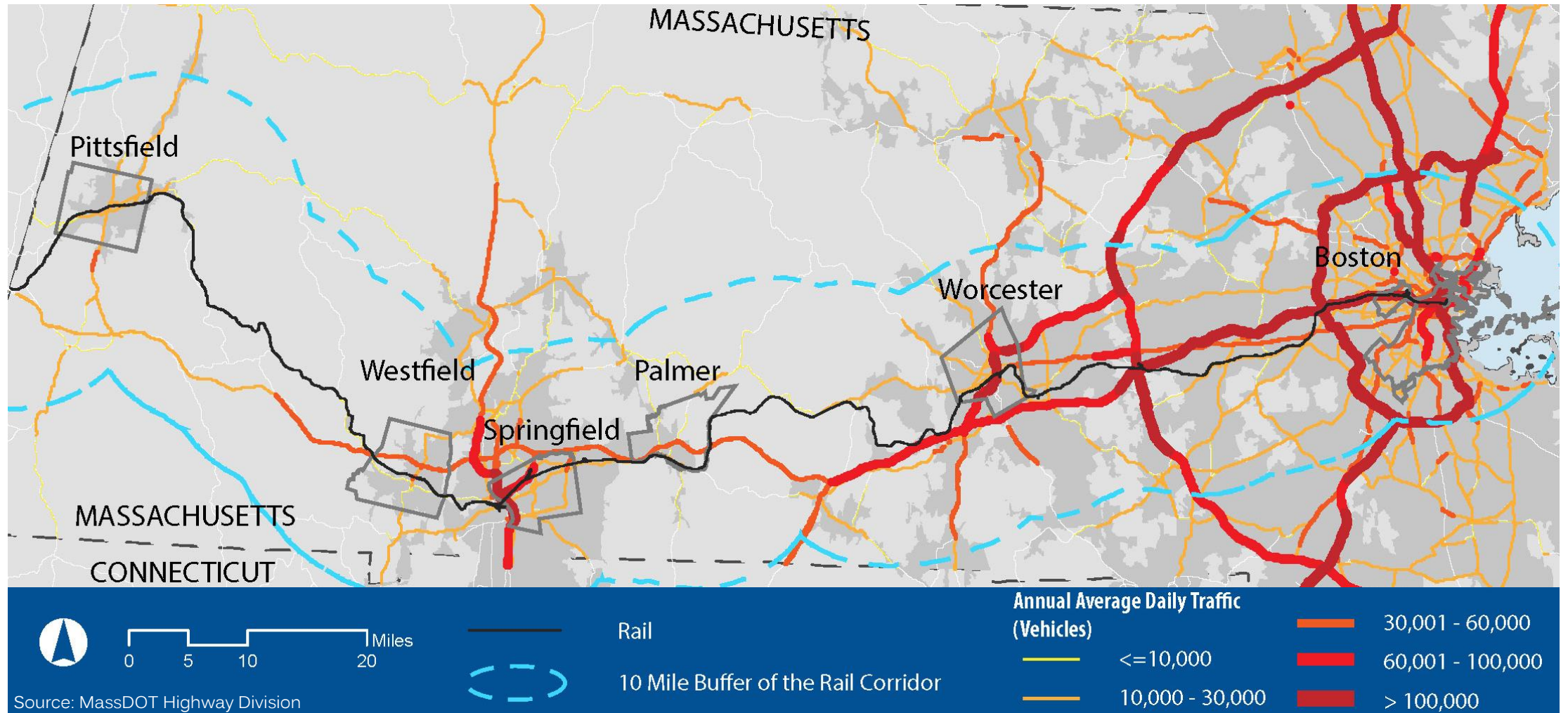
Market Analysis – 2020 Pop. Density



Home Locations of Boston Workers



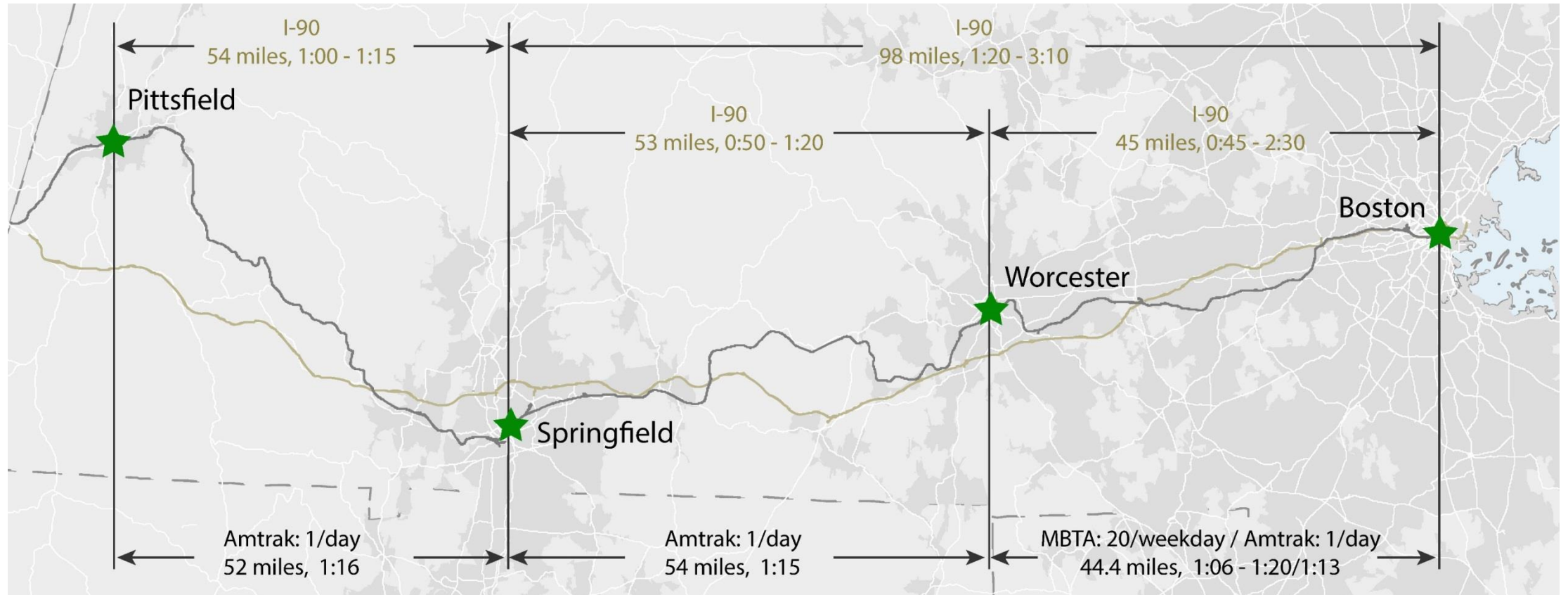
Traffic Volumes Adjacent to Corridor



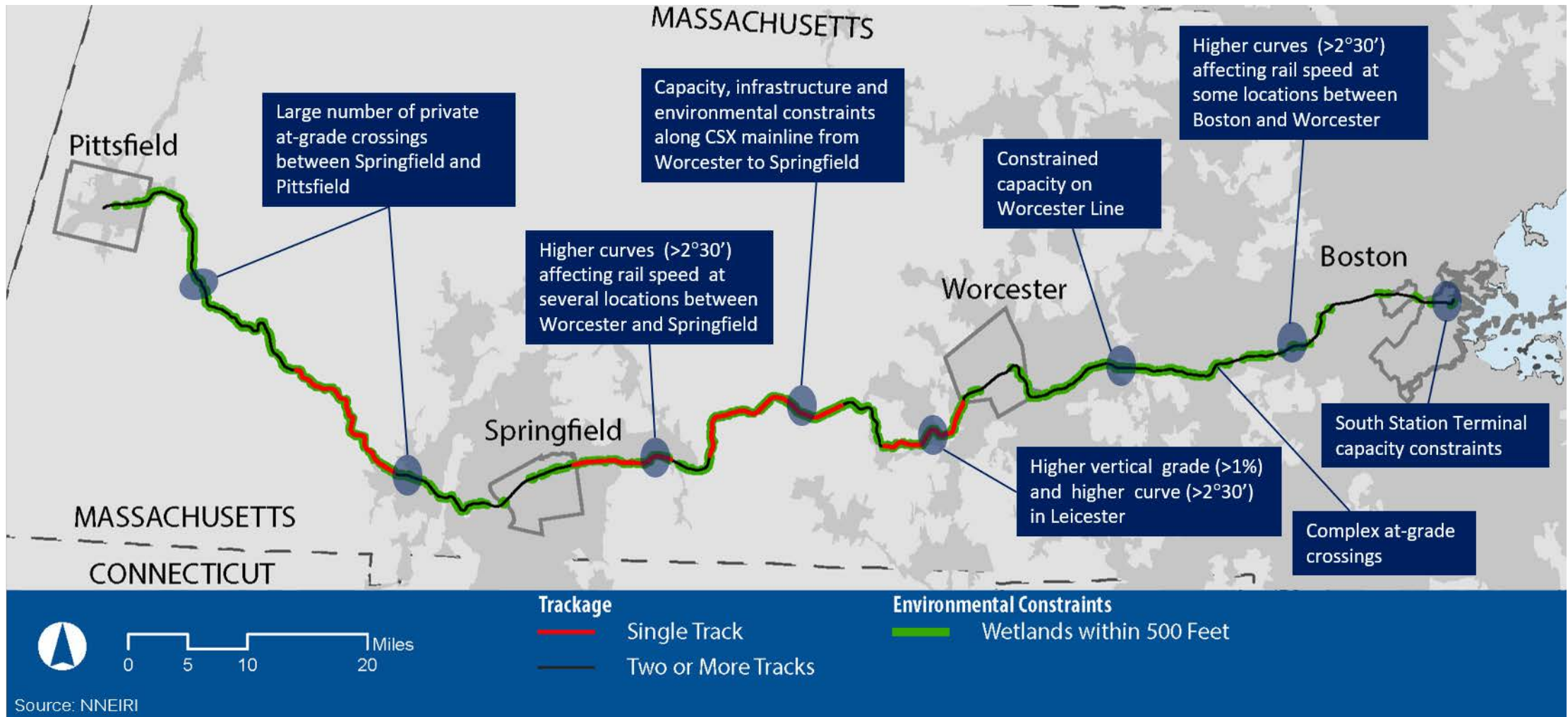
Travel Operations and Performance

Travel Mode	Provider	Performance
Automobile	Mass Pike I-90	<ul style="list-style-type: none"> Traffic volume increased an avg. of 2% per year from 2008 to 2017 Annual growth rates are higher than forecast in 2012 (0.5%) Significant travel time ranges at different portions of the corridor
Commuter Rail	MBTA Worcester/ Framingham Line	<ul style="list-style-type: none"> Number of trains increased from 46 one-way trains in 2014 & 2015 to 54 one-way trains in 2018 (26%)
Intercity Rail	Amtrak Lake Shore Limited	<ul style="list-style-type: none"> One round trip per day Boston to Chicago On time performance is poor – single track in western MA a constraint
Intercity Bus	Greyhound and Peter Pan	<ul style="list-style-type: none"> 4 Greyhound weekday roundtrips and 6 Peter Pan weekday roundtrips between Boston and Springfield 2 Peter Pan trips between Springfield and Pittsfield No change in weekday service frequency since 2012 7,800 estimated ridership for potential Pittsfield-Springfield-Boston bus

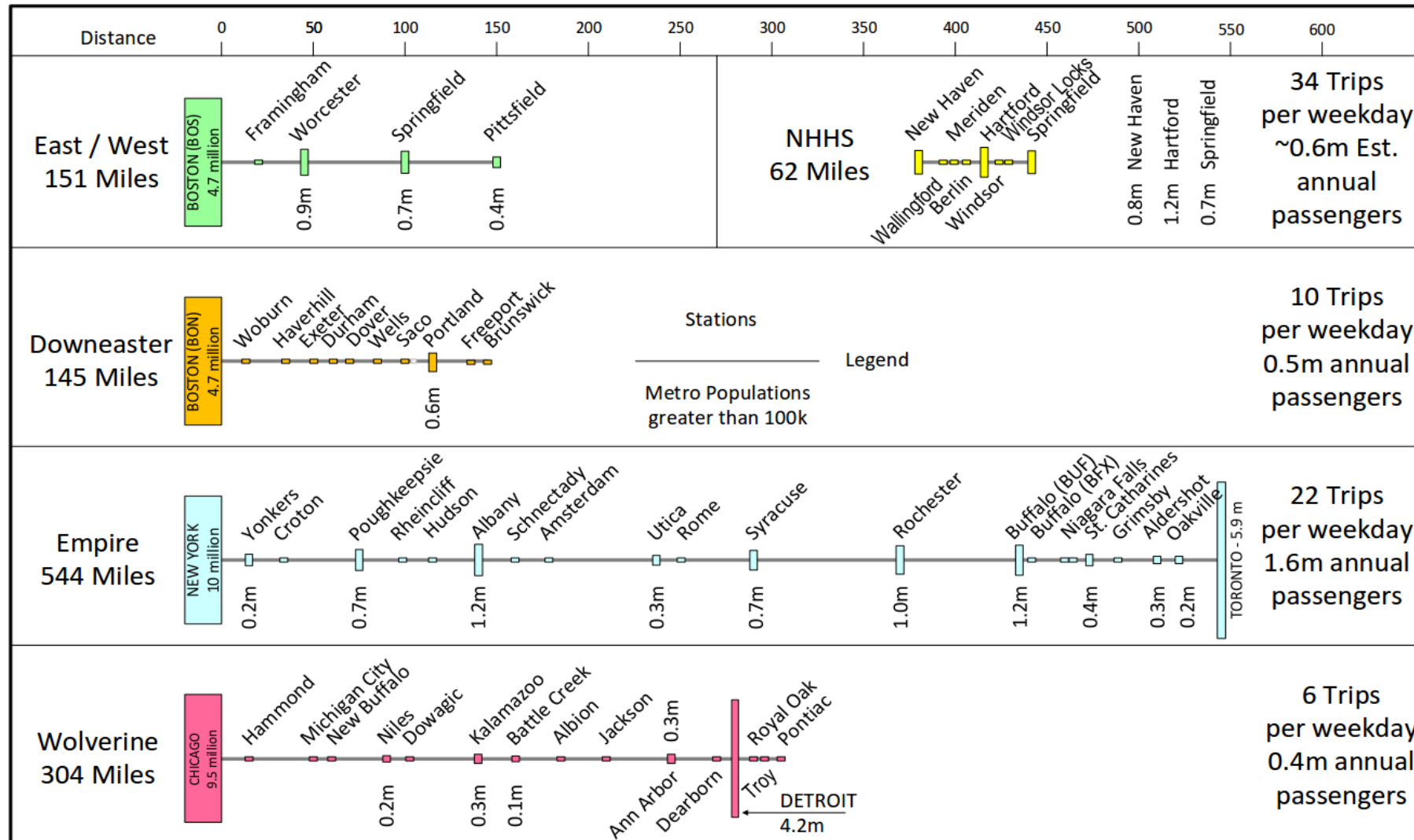
Travel Operations and Performance



Physical & Engineering Conditions



Review of Comparable Rail Markets



Context Analysis Next Steps

- Complete analysis and draft technical memos summarizing:
 - Prior studies and highlighting gaps or important information for this process
 - Multimodal passenger and freight market (existing and future)
 - Physical, regulatory, and ownership opportunities and constraints

Goals and Objectives

Potential Goals for Service Alternatives

- Improve attractiveness of Western MA as an **affordable place to live**
- Enhance competitiveness for attracting **new jobs and employers**
- Support economic development for **Western MA businesses**
- Improve mobility for **transit-dependent** populations
- Reduce the number of **automobile trips** along the corridor
- Reduce **greenhouse gas emissions** and **air quality impacts** from transportation

KEY CONSIDERATIONS

- Impacts to freight
- Environmental and community impacts
- Cost

DISCUSSION

Is anything missing or not needed?

Activity Instructions

1. Take no more than 12 chips. The chips can be any color or combination of colors.
2. Place chips in the jars that match the objectives that are most important to you.
3. Use the index cards to tell us about any objectives you think are missing from this list or to provide additional feedback.
4. You can place more than one chip in the jars that represent objectives that are important to you or you can distribute the chips evenly across all the jars.

Goals Next Steps

- Flesh out goals, objectives, and performance measures for each stage of analysis

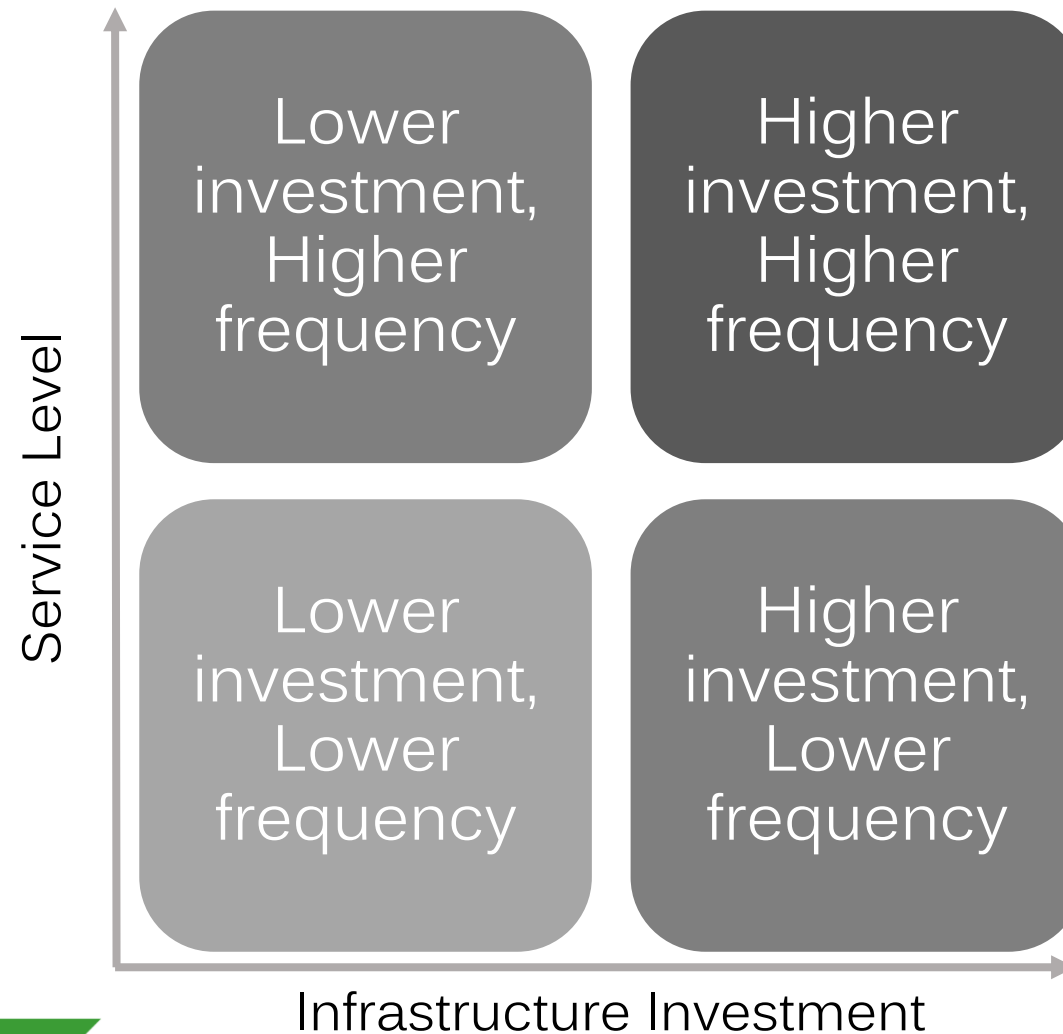
Identify and Analyze Alternatives

Scope of Service Alternatives

Context for Service Alternatives

Alternatives Analysis Process

Scope of Service Alternatives



SERVICE CONSIDERATIONS

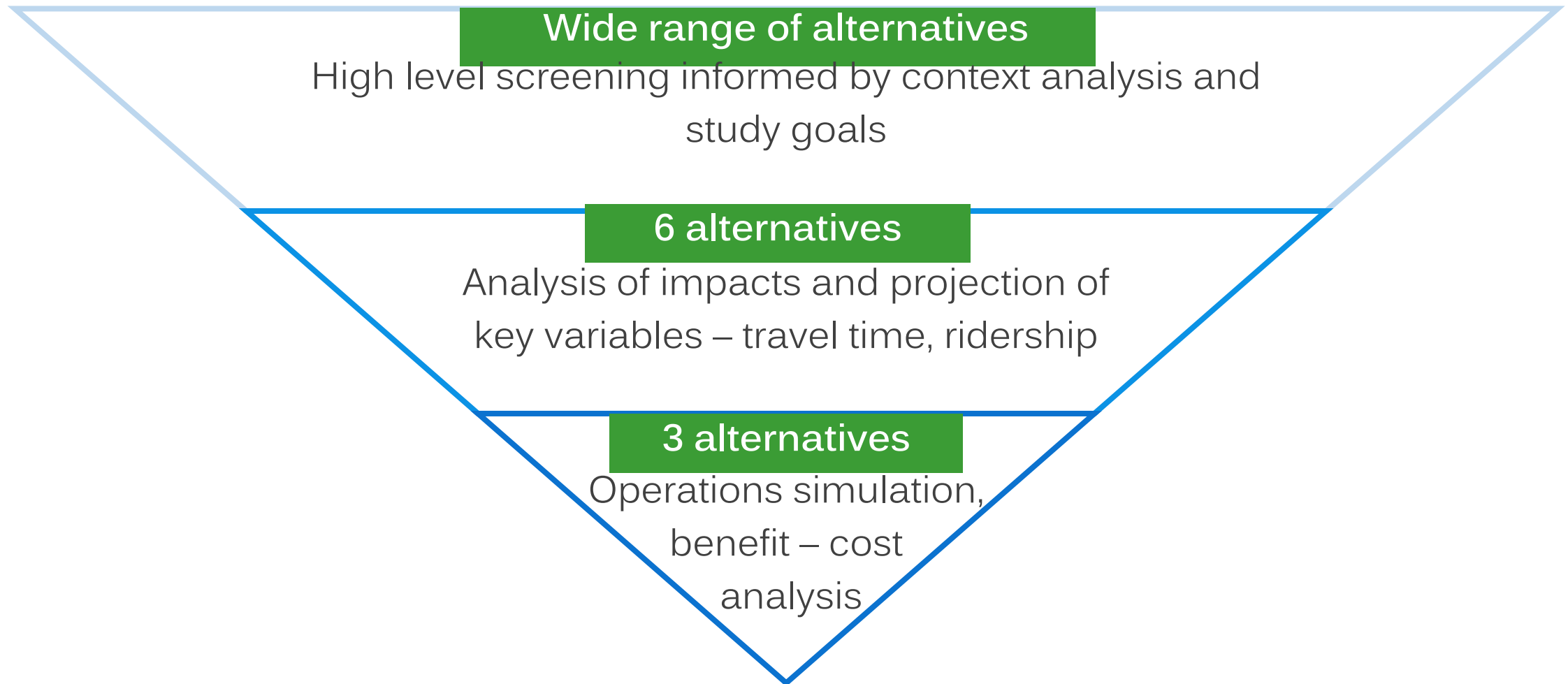
- Infill stations
- Technology
- Operating model
- Time of day

Context for Service Alternatives

The 2016 NNEIRI Study assessed three alternatives in detail:

City	Alternative 1 (Max 60 mph)	Alternative 2 (Max 79 mph)	Alternative 3 (Max 90 mph)
Boston (South Station)	0:00	0:00	0:00
Boston (Back Bay)	0:06	0:06	0:06
Framingham	0:31	0:29	0:29
Worcester	1:00	0:53	0:53
Palmer	1:39	1:37	1:36
Springfield	2:05	1:50	1:49

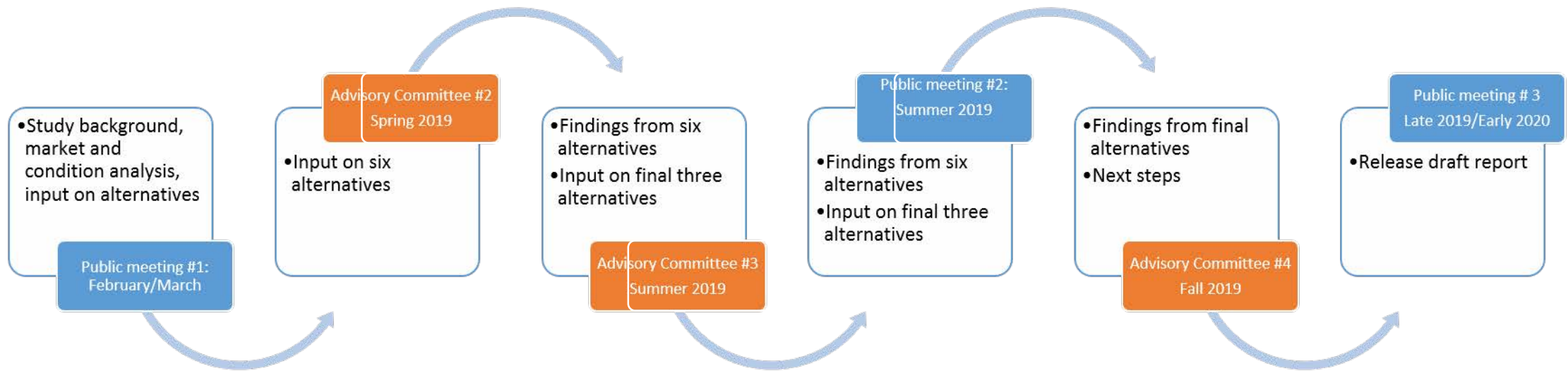
Alternatives Analysis Process



Next Steps

Future Engagement

- Provide any follow up feedback
- Share any data sources you think may be useful
- Help us get the word out



Closing Questions

- What additional questions do you have about this process?
- What information would you like to have as we delve into the alternatives at the next meeting?

Public Comment