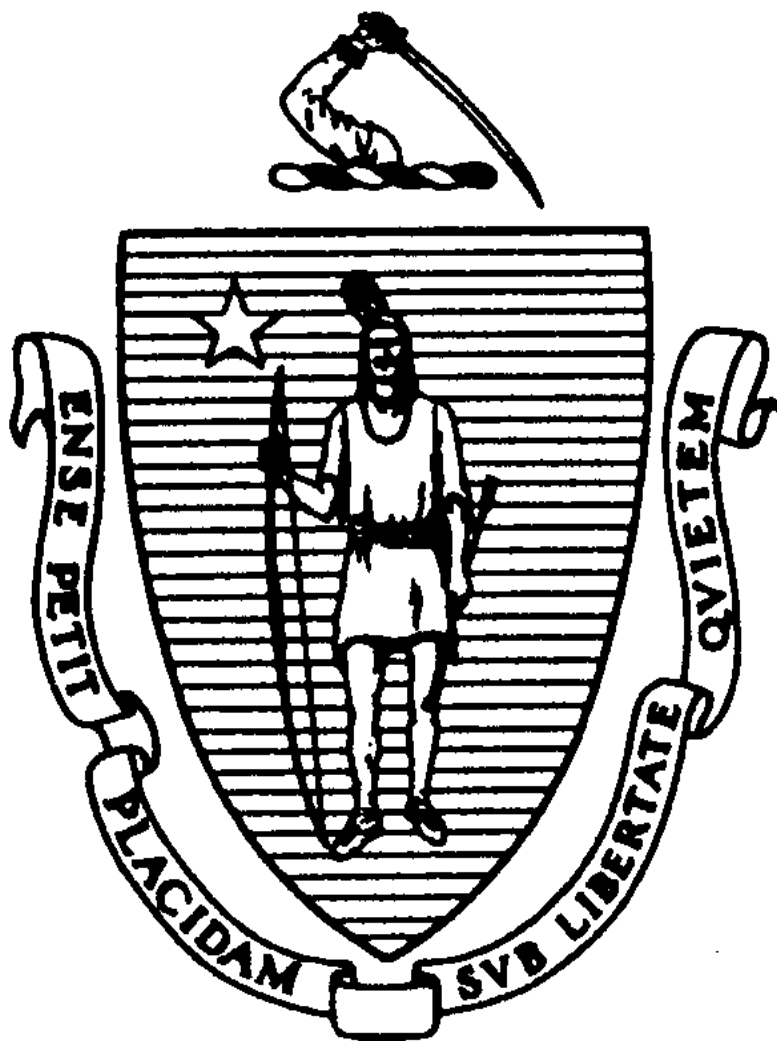


# New Court Commitments to Massachusetts County Correctional Facilities During 1996

Massachusetts Department of Correction

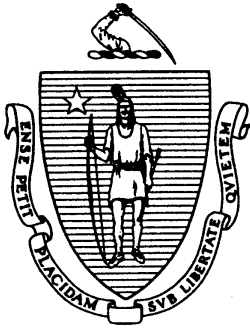


A. Paul Cellucci  
**Governor**

A. David Rodham  
**Secretary of Public Safety**

Michael T. Maloney  
**Commissioner of Correction**

Kathleen M. Dennehy  
**Deputy Commissioner**



*Prepared by:*

**Robert J. Tenaglia Jr.**

and **Hollie A. Matthews**

Research & Planning

**Rhiana Kohl, Ph.D., Director**

**Massachusetts Department of Correction**

Research & Planning Division

MCI-Concord/SFU Building

P.O. Box 9125

Concord, MA 01742

(617) 727-8857 (phone)

(617) 727-0839 (fax)

[www.magnet.state.ma.us/doc](http://www.magnet.state.ma.us/doc)

## **Acknowledgments**

The publication of this report would not be possible without the assistance of the county houses of correction. The authors would like to thank the many county houses of correction Records and Admission staff for providing Research and Planning with access to the necessary information used to produce this report.

The contribution of DOC employee Collette McKoy and Northeastern University student interns Tracie Leonard and Eric Berger is greatly appreciated. Review of earlier drafts, particularly by Research and Executive staff is also very much appreciated.

This report is accessible on the DOC website at [www.magnet.state.ma.us/doc](http://www.magnet.state.ma.us/doc) and should also be available at the following libraries: Massachusetts State Library, Library of Congress, Washington D.C., Boston Public Library, University of Massachusetts, Amherst, Springfield City Library, and Worcester Public Library.

If you have any questions regarding this report, please contact the DOC Research and Planning Division.

## **ABSTRACT**

This report provides a statistical description of the 19,482 new offenders committed by the courts to Massachusetts county facilities (jails or houses of correction) during 1996. The report presents information on commitment institution, court committed from, month of commitment, offense, sentence length, sentence type, age, sex, race, marital status, education, place of birth and residence.

Some highlights of the statistics presented in this report are:

- ⇒ **In 1996, there were 19,482 commitments to county facilities. This represents an increase of two percent over the 19,033 commitments in 1995.**
- ⇒ **Twenty-one percent were committed for offenses against the person, two percent for sex offenses, twenty-two percent for property offenses, eighteen percent for drug offenses, ten percent for operating under the influence of alcohol (O.U.I.), fourteen percent for motor vehicle and thirteen percent for 'other' offenses.**
- ⇒ **The most common offenses for which offenders were committed were unarmed assault (thirteen percent), motor vehicle violations (thirteen percent), and O.U.I. (ten percent).**
- ⇒ **The average sentence length was six months.**
- ⇒ **Eight percent were committed in lieu of payment of a fine. Two percent were committed for weekend sentences.**
- ⇒ **The average age of offenders committed to county facilities was 31 years old.**
- ⇒ **Fifty-eight percent of the commitments were Caucasian, twenty-two percent were African American, nineteen percent were Hispanic, and one percent were other races.**
- ⇒ **The average educational level was 11th grade.**
- ⇒ **Seventy-six percent of the offenders were single, thirteen percent were married, and eleven percent were separated, divorced or widowed.**
- ⇒ **Seventy-two percent of the commitments were born in Massachusetts, fifteen percent were born in other states, eight percent were born in U.S. territories, and five percent were foreign-born.**
- ⇒ **Ninety-five percent of the 1996 commitments were male and five percent were female. This represents a one percent increase for male commitments and an 18 percent increase of female commitments from 1995.**

# **TABLE OF CONTENTS**

<b><u>Title</u></b>	<b><u>Page Number</u></b>
<b><u>Acknowledgments</u></b>	i
<b><u>Abstract</u></b>	ii
<b><u>Table of Contents</u></b>	iii
<b><u>Introduction</u></b>	1
<b><u>County Facilities in Massachusetts</u></b>	1
<b><u>Commitments to County Correctional Facilities, 1992 to 1996</u></b>	2
Figure 1.        County Commitments, 1992 to 1996	2
Table 1.        County Facility Committed To, 1992-1996	2
Figure 2.        Present Offense: General Categories, 1992 and 1996	2
Figure 3.        Sentence Length of County Commitments, 1992 and 1996	3
Table 2.        Sentence Length, 1992-1996	3
Figure 4.        Age Distribution of County Commitments, 1992 and 1996	3
Table 3.        Age at Commitment, 1992-1996	4
Table 4.        Gender, 1992-1996	4
Figure 5.        Gender, 1992 and 1996	4
<b><u>A Description of 1996 Commitments</u></b>	5
Figure 6.        1996 Commitments by County	5
Figure 7.        Offense Type, 1996 County Commitments	6
<b><u>Statistical Tables, 1996 County Commitments</u></b>	7-13
Month of Commitment	7
Court of Commitment	7
Present Offense: General Categories	8
Present Offense: Person Offenses	8
Present Offense: Sex Offenses	8
Present Offense: Property Offenses	9
Present Offense: Drug Offenses	9
Present Offense: Other Offenses	10
Sentence Length	10
Weekend Sentences	11
Age at Commitment	11
Sex/Gender	11
Race/Ethnicity	12
Marital Status	12
Last Grade Completed	12
Place of Birth	13
County of Residence	13
Appendix I.        County Facilities in Massachusetts, Address and Year Built	14
Appendix II.        Population in County Correctional Facilities, January 1,1996 to December 31,1996	16
<b><u>Glossary</u></b>	17

## **Introduction**

This report provides a statistical description of offenders committed to Massachusetts county facilities (jails and houses of correction) during 1996. Offenders are described in terms of commitment institution, month of commitment, committing court, offense, sentence length, sentence type (weekend and jail sentences), sex, age, race, marital status, education, place of birth, and residence. Trends in court commitments to the county correctional system over the past decade are also presented.

The statistical tables were derived from information submitted by each county facility to the Research and Planning Division of the Massachusetts Department of Correction (DOC), and were produced on the DOC's VAX Computer System. A glossary is provided in the back of this report to reference definitions of some terms used.

When referring to the statistical tables, the reader should note the following: (1) the left number in each column represents the number of offenders that fall into the corresponding category in that row of the table; and (2) the right number in each cell is the percent distribution of the number of offenders that fall into each category (column percents). In the narrative, percentages reflect only those cases where data were available. Cases with missing data were excluded.

## **COUNTY FACILITIES IN MASSACHUSETTS**

There are fourteen counties in Massachusetts. All counties except for Nantucket county have at least one county correctional facility administered by each county sheriff.

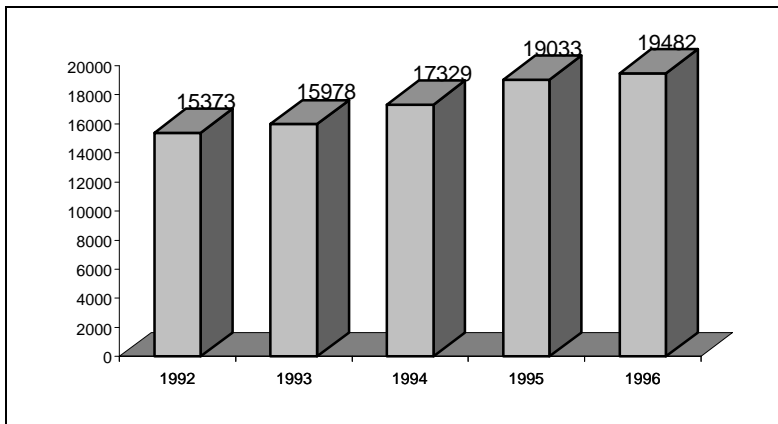
These facilities usually contain a jail for pre-trial detainees, and a house of correction, for sentenced inmates. The location and administrators of all facilities are shown in Appendix I. Suffolk county has a separate facility for its jail (Nashua Street) and its house of correction (South Bay). Middlesex county has two facilities, a combined jail and house of correction in Billerica and a jail in Cambridge.

Four counties have specialized facilities for sentenced offenders: Essex county has the Correctional Alternative Center (CAC) in Lawrence; Hampden county has the Western Massachusetts Correctional Alcohol Center (WMCAC) facility in Springfield; Bristol county has the Eastern Massachusetts Correctional Alcohol Center (EMCAC); and Norfolk county has the Braintree Alternative Center (BAC). Individuals are not committed directly to these four facilities, but can be transferred to them from a house of correction or state correctional facility.

The population in county correctional facilities for the period January 1, 1996 to December 31, 1996 is shown in Appendix II. This includes the average daily population (ADP), beginning and ending population, design capacity, and average daily population divided by design capacity, which is an indicator of facility utilization.

## COMMITMENTS TO COUNTY CORRECTIONAL FACILITIES, 1992 TO 1996

**Figure 1.**  
**County Commitments,**  
**1992 to 1996**



During 1996 there were 19,482 new commitments to county facilities. This is a two percent (N=449) increase from the 19,033 commitments in 1995, and a 27 percent increase from the 15,373 commitments in 1992. The largest increase in commitments during this

five year span occurred between 1994 and 1995. Commitments to county facilities for the last five years are shown in Figure 1 and Table 1.

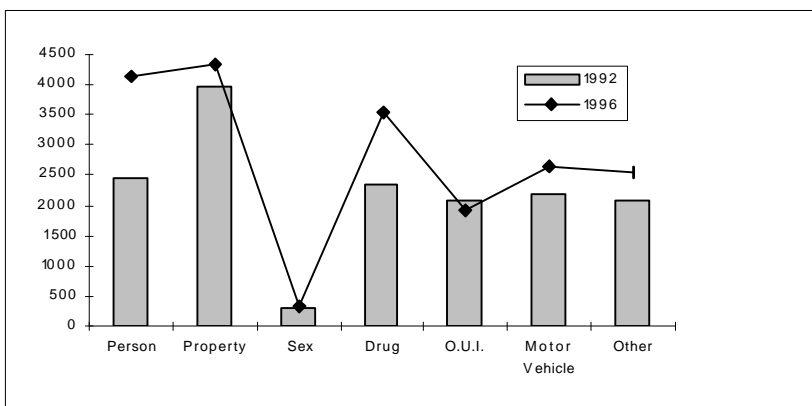
Tables 1-4 show selected characteristics of county commitments during the five year period. The number of commitments increased by 27 percent, or 4,109, from 15,373 in 1992 to 19,482 in 1996. The largest increase in commitments by county from 1992 to 1996 occurred in Suffolk (61%), Barnstable (49%) and Plymouth (47%).

Figure 2 shows the offenses for which individuals were committed changed over the last five years. Between 1992 and 1996, increases occurred for all offense categories except OUI, which showed a decrease of seven percent (N=143).

**Table 1.**  
**County Facility Committed To;**  
**1992-1996**

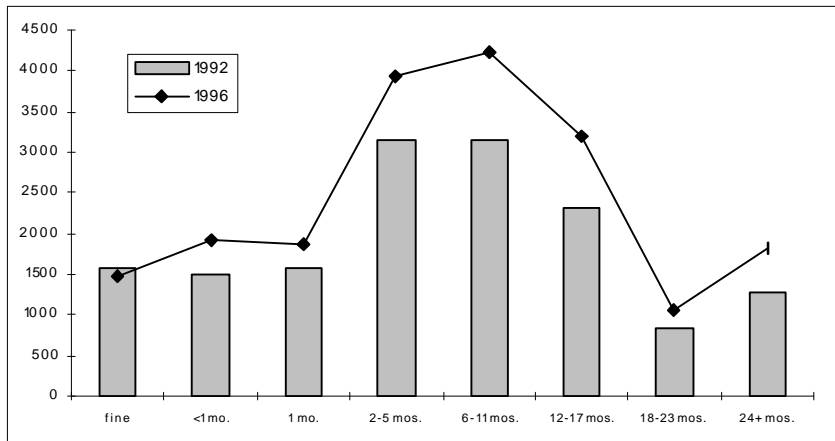
	<u>1992</u>		<u>1993</u>		<u>1994</u>		<u>1995</u>		<u>1996</u>	
	N	%	N	%	N	%	N	%	N	%
Barnstable	471	3	488	3	557	3	665	3	700	4
Berkshire	490	3	581	3	574	3	637	3	710	4
Bristol	1772	11	1794	11	2264	13	2309	12	2525	13
Dukes	36	0	35	0	33	0	50	0	40	0
Essex	1530	10	1429	10	1450	8	1472	8	1967	10
Franklin	252	2	261	2	289	2	303	2	257	1
Hampden	2001	13	1931	13	2104	12	2409	13	2293	12
Hampshire	394	3	392	3	365	2	401	2	400	2
Middlesex	2553	17	2501	17	2599	15	2847	15	2634	13
Norfolk	978	6	1060	6	1158	7	1251	7	1180	6
Plymouth	780	5	789	5	711	4	806	4	1146	6
Suffolk	2008	13	2462	13	2747	16	3070	16	3227	17
Worcester	2108	14	2255	14	2478	14	2813	15	2403	12
<b>Total</b>	<b>15373</b>	<b>100</b>	<b>15978</b>	<b>100</b>	<b>17329</b>	<b>100</b>	<b>19033</b>	<b>100</b>	<b>19482</b>	<b>100</b>

**Figure 2.**  
**Present Offense:**  
**General Categories, 1992 and 1996**



During the 1992 to 1996 period, commitments for person offenses increased by seventy percent (N=1702); commitments for drug offenses increased 51 percent (N=1198); commitments for sex offenses increased by 32 percent (N=45); commitments for motor vehicle offenses increased by 22 percent (N=480); commitments for 'other' offenses increased by 21 percent (N=448); and commitments for property offenses increased by eleven percent (N=379).

**Figure 3.**  
**Sentence Length of**  
**County Commitments,**  
**1992 and 1996**



**Table 2.**  
**Sentence Length,**  
**1992-1996**

	<u>1992</u>		<u>1993</u>		<u>1994</u>		<u>1995</u>		<u>1996</u>	
	N	%	N	%	N	%	N	%	N	%
Fine	1572	10	1475	9	1348	8	1501	8	1464	8
Less than 1 month	1489	10	1614	10	1813	10	1929	10	1908	10
1 month	1581	10	1567	10	1831	11	1899	10	1871	10
2 to 5 Months	3158	20	3243	20	3591	21	3750	20	3942	20
6 to 11 Months	3139	20	3308	21	3784	22	3941	21	4228	22
12 to 17 Months	2321	15	2622	16	2770	16	3192	17	3200	16
18 to 23 Months	825	5	808	5	854	5	1006	5	1054	5
24 Months or More	1288	8	1341	8	1338	8	1815	9	1815	9
<b>Total</b>	<b>15373</b>	<b>100</b>	<b>15978</b>	<b>100</b>	<b>17329</b>	<b>100</b>	<b>19033</b>	<b>100</b>	<b>19482</b>	<b>100</b>

**Figure 4.**  
**Age Distribution of**  
**County Commitments,**  
**1992 and 1996**

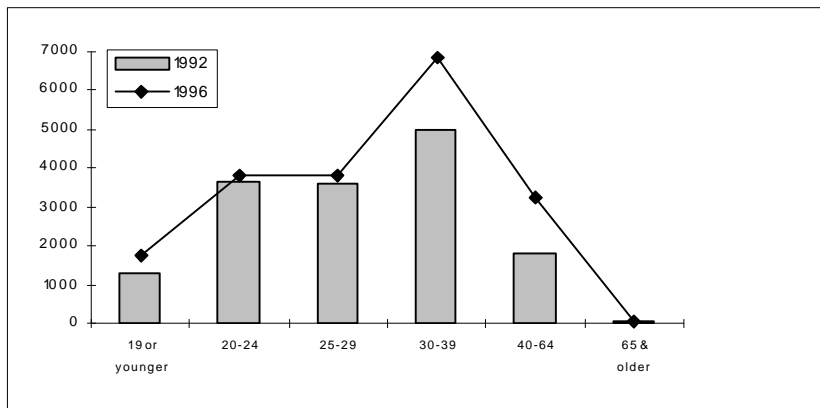


Figure 3 and Table 2 show that sentence lengths have increased slightly over the past five years. In 1992, 30 percent of commitments received a sentence of one month or less (including fines); and in 1996, 28 percent of commitments had a sentence of one month or less. In 1992, 48 percent of commitments received a sentence of six months or more; and in 1996, 52 percent of commitments received a sentence of six months or more.

Figure 4 and Table 3 reveal that the age of offenders at commitment also increased over the last five years. In 1992, 32 percent of the commitments were 24 years or younger, and 68 percent were 25 years or older. In 1996, 29 percent of the commitments were 24 years or younger, and 71 percent were 25 years or older.

The period 1992 to 1996 shows a large increase in the number of female county commitments from 611 in 1992 to 1,043 in 1996; an increase of 432 females, or 71%. County commitments for males increased by 3,677 offenders, or 25% during the same period. At the beginning of the period, females comprised four percent of the total commitments; in 1996, they comprised five percent of the commitments. This can be seen in Table 4 and Figure 5.

Commitments

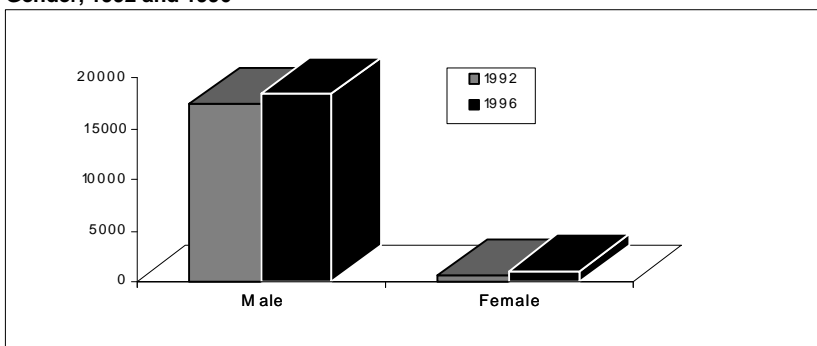
**Table 3.**  
**Age at Commitment,**  
**1992-1996**

	<u>1992</u>		<u>1993</u>		<u>1994</u>		<u>1995</u>		<u>1996</u>	
	N	%	N	%	N	%	N	%	N	%
19 or Younger	1290	8	1225	8	1488	9	1660	9	1755	9
20 to 24	3645	24	3547	22	3571	21	3738	20	3815	20
25 to 29	3606	23	3657	23	3793	22	3842	20	3806	20
30 to 39	5001	33	5511	34	6106	35	6837	36	6822	35
40 to 64	1805	12	2002	12	2333	13	2914	15	3248	17
65 and Older	26	0	36	0	38	0	42	0	36	0
<b>Total</b>	<b>15373</b>	<b>100</b>	<b>15978</b>	<b>100</b>	<b>17329</b>	<b>100</b>	<b>19033</b>	<b>100</b>	<b>19482</b>	<b>100</b>

**Table 4.**  
**Gender, 1992-1996**

	<u>1992</u>		<u>1993</u>		<u>1994</u>		<u>1995</u>		<u>1996</u>	
	N	%	N	%	N	%	N	%	N	%
Male	14762	96	15436	97	16582	96	18174	95	18439	95
Female	611	4	542	3	747	4	859	5	1043	5
<b>Total</b>	<b>15373</b>	<b>100</b>	<b>15978</b>	<b>100</b>	<b>17329</b>	<b>100</b>	<b>19033</b>	<b>100</b>	<b>19482</b>	<b>100</b>

**Figure 5.**  
**Gender, 1992 and 1996**





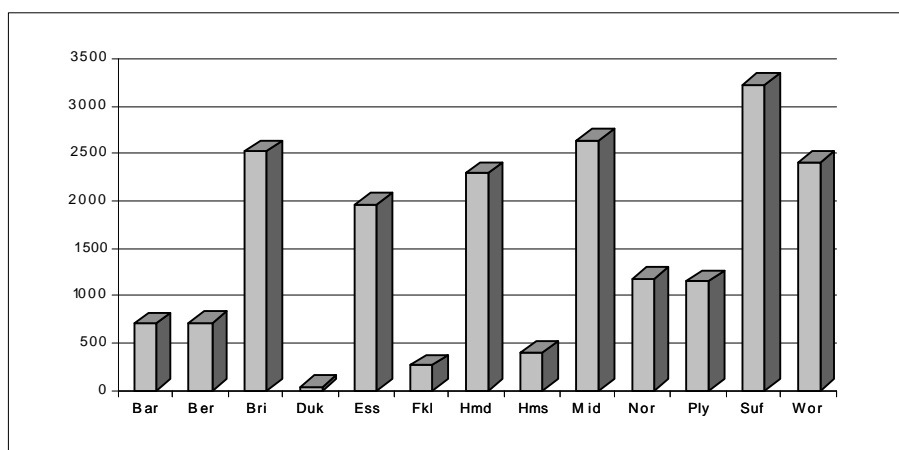
## **A DESCRIPTION OF 1996 COMMITMENTS**

In this section, the 19,482 offenders committed to county facilities during 1996 are described in more detail. Present offense (the offense for which an inmate is presently serving a sentence) and sentence information are followed by data summarizing the personal background characteristics of the county commitments.

### **Present Offense Characteristics**

**Committing Institution.** Figure 6 shows the number of commitments ranging from a low of 40 in Dukes county to a high of 3,227 in Suffolk county. Eight of the fourteen counties received more than 1,000 Commitments in 1996: Suffolk (N=3,227), Middlesex (N=2,634), Bristol (N=2,525), Worcester (N=2,403), Hampden (N=2,293), Essex (N=1,967), Norfolk (N=1,180), and Plymouth (N=1,146). These eight counties accounted for 88 percent of all county commitments in 1996.

**Figure 6.**  
**1996 Commitments**  
**by County**



**Committing Court.** (Table 6) Most offenders committed to county facilities are sentenced by the lower courts of the county to which they are committed. Ninety-four percent of the commitments were from lower courts, while six percent were from superior courts.

**Present Offense.** (Table 7) Most offenders committed to county facilities were sentenced for non-violent offenses (77 percent), while 23 percent were committed for violent offenses (those against the person or sex offenses).

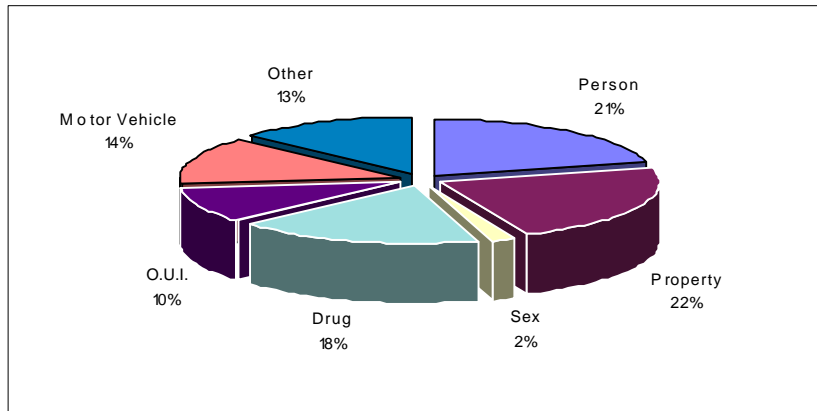
Twenty-one percent of the commitments were for person offenses (Table 8). A majority of these were for unarmed assault (assault or assault and battery) (N=2613) or armed assault (assault and battery with a dangerous weapon or assault with a dangerous weapon)(N=1249). There were 24 commitments for vehicular homicide.

Two percent of the commitments were for sex offenses (N=338) including 53 for rape of an adult or child, 198 for assault with intent to rape (which includes assault with intent to rape a minor and indecent assault on a mentally retarded person), and 87 for other sex offenses (e.g., unnatural acts, lewdness, indecent exposure and sexual misconduct). Of the 251 commitments for rape and sexual assault, 164 involved minors as victims and 87 involved adult victims (Table 9).

Twenty-two percent of all commitments were for property offenses (Table 10). The most common property offenses were: burglary (N=1,279), larceny (N=1,060), receiving stolen goods (N=668), stealing (N=408), property injuries (N=295), and vehicle theft (N=199).

Eighteen percent of the commitments were for drug offenses (Table 11). The majority (90%) of these drug offenses were for violation of the Controlled Substance Act with Class A, Class B, or Class D substance (N=3,171).

**Figure 7.**  
**Offense Type, 1996**  
**County Commitments**



Thirty-seven percent of all commitments were for offenses in the 'other' offense category (Table 12). Most of these commitments were for motor vehicle violations (N=2652) and O.U.I. (N=1940). Other common offenses in this category were for 'other' offenses (N=710), disturbing the peace (N=371), weapon offenses (N=363), violating a court or restraining order (N=327) and trespassing (N=185).

**Sentence.** (Table 13) The average sentence length for 1996 commitments was six months. In general, offenders sentenced for less than two months will serve their entire sentence, and offenders sentenced for two months or more will be eligible for parole after half of their sentence is served. Seven percent of the commitments (N=1,464) were in lieu of payment of a fine. County sentences range up to two and one-half years, but in a small number of cases, offenders can serve consecutive sentences of two and one-half years or less, such that the total length of sentence will be more than two and one-half years.

Some sentences are served only on weekends; two percent of all commitments were weekend sentences (N=340) (Table 14)

### **Offender Characteristics**

The offender characteristics of race/ethnicity, marital status, education, place of birth, and residence are **self-reported** by the inmate at the time of commitment.

**Age.** (Table 15) The age of offenders ranged from 16 years to 76 years. The median age was 31 years. There were 2,587 offenders (13 percent) 20 years or younger and 36 (less than one percent) age 65 or older.

**Sex.** (Table 16) Of the 19,482 commitments to county facilities, there were 1,043 females and 18,439 males. Most females that received a county sentence were sent to MCI-Framingham, the state correctional facility for female offenders. **Only those females serving sentences in county facilities are included in this report.**

**The average 1996 County Commitment was a thirty-one year old single, Caucasian male with an eleventh grade education, who was born and resides in Massachusetts.**

**Race/Ethnicity.** (Table 17) The majority of offenders were Caucasian (58 percent). Twenty-two percent were African American and 19 percent were Hispanic. There were 127 individuals (one percent) in other racial groups.

**Marital Status.** (Table 18) Most offenders were single (76 percent). Thirteen percent were married at the time of commitment and 11 percent were separated, divorced or widowed.

**Education.** (Table 19) The average educational level was 11th grade. Six percent had only a grade school education (first through eighth grade), forty percent completed some high school and forty percent were high school graduates with no further formal education. Nine percent had some college education and two percent reported having a college degree.

**Place of Birth.** (Table 20) Seventy-three percent of all county commitments were born in Massachusetts, fifteen percent were born in other states, eight percent were born in U.S. territories and five percent were foreign-born.

**Residence.** (Table 21) As reported by the counties, all but 416 (two percent) offenders committed to county facilities were residing in Massachusetts at the time of commitment. In most cases, the offenders were residing in the same county as the facility to which they were committed.

Table 5.

<b>Month of Commitment</b>	<b>No. of Offenders</b>	<b>Percent</b>
January	1715	9%
February	1665	8%
March	1662	8%
April	1499	8%
May	1693	9%
June	1543	8%
July	1694	8%
August	1762	9%
September	1599	8%
October	1664	8%
November	1548	8%
December	1438	7%
<b>Total</b>	<b>19482</b>	<b>100</b>

Table 6.

<b>Court of Commitment</b>	<b>No. of Offenders</b>	<b>Percent</b>
Superior Courts	1100	6%
Barnstable D.C.	601	3%
Berkshire D.C.	696	4%
Bristol D.C.	2424	12%
Dukes D.C.	21	0%
Essex D.C.	1881	10%
Franklin D.C.	254	1%
Hampden D.C.	1977	10%
Hampshire D.C.	441	2%
Middlesex D.C.	2491	13%
Nantucket D.C.	13	0%
Norfolk D.C.	1069	5%
Plymouth D.C.	1174	6%
Suffolk D.C.	3022	15%
Worcester D.C.	2318	12%
<b>Total</b>	<b>19482</b>	<b>100%</b>

(D.C. = District Court)

Table 7.

<b>Present Offense General Categories</b>	<b>No. of Offenders</b>	<b>Percent</b>
Person	4134	21%
Property	4344	22%
Sex	338	2%
Drug	3537	18%
Other	7129	37%
<b>Total</b>	<b>19482</b>	<b>100%</b>

Table 8.

<b>Person Offenses</b>	<b>No. of Offenders</b>	<b>Percent</b>
Manslaughter	3	0%
Vehicular Homicide	24	0%
Asslt-Intent	16	0%
Armed Robbery	32	0%
Unarmed Robbery	51	0%
A+B Child	4	0%
Civil Rights Violation	2	0%
Armed Assault	1249	7%
Unarmed Assault	2613	14%
Stalking	28	0%
Mayhem	3	0%
A+B DW Vict. + 65	16	0%
Extortion	62	0%
Kidnapping	12	0%
Conspiracy	18	0%
Not Applicable	15349	79%
<b>Total</b>	<b>19482</b>	<b>100%</b>

Table 9.

<b>Sex Offenses</b>	<b>No. of Offenders</b>	<b>Percent</b>
Rape	9	0%
Assault-Rape	78	0%
Rape-Minor	44	0%
Assault-Rape-Minor	120	1%
Unnatural Acts	27	0%
Lewdness	52	0%
Indecent Exposure	4	0%
Sexual Misconduct	4	0%
Not Applicable	19144	98%
<b>Total</b>	<b>19482</b>	<b>100%</b>

Table 10.

<b>Property Offenses</b>	<b>No. of Offenders</b>	<b>Percent</b>
Arson	35	0%
Armed Burglary	5	0%
Burglary	1279	7%
Burglary Tools	37	0%
Stealing	408	2%
Larceny-Person	181	1%
Larceny	1060	5%
Vehicle Theft	199	1%
Use Without Authority	21	0%
Larc. Vict. Over 65	2	0%
Forgery-Uttering	134	1%
Embezzlement	3	0%
Fraud	16	0%
Stolen Goods	668	3%
Common Notorious Thief	1	0%
Property Injuries	295	2%
Not Applicable	15138	78%
<b>Total</b>	<b>19482</b>	<b>100%</b>

Table 11.

<b>Drug Offenses</b>	<b>No. of Offenders</b>	<b>Percent</b>
Being Near Narcotics	5	0%
Make Counterfeit Substance	3	0%
Possession-Syringe	74	0%
Sale of Narcotics	2	0%
Intent to Sell	7	0%
OUI-Narcotics	4	0%
Conspiracy	23	0%
Controlled Substance	133	1%
Class-A	1342	7%
Class-B	1385	7%
Class-C	28	0%
Class-D	444	2%
Class-E	8	0%
Utter False Prescription	1	0%
Poss. WI School Zone	78	0%
Not Applicable	15945	82%
<b>Total</b>	<b>19482</b>	<b>100%</b>

Table 12.

<b>Other Offenses</b>	<b>No. of Offenders</b>	<b>Percent</b>
Escapes	35	0%
Weapon Offenses	363	2%
Non Support	46	0%
Disturbing Peace	371	2%
Prostitution	135	1%
Gaming	1	0%
Motor Vehicle	2652	14%
Contempt	180	1%
Viol. Court Order	327	2%
Public Drinking	4	0%
O.U.I.	1940	10%
Minor Poss. Alcohol	12	0%
Att. to Com. Crime	132	1%
Trespassing	185	1%
False Alarm	2	0%
Environmental Offenses	4	0%
Cruelty to Animals	4	0%
Other	736	4%
Not Applicable	12353	63%
<b>Total</b>	<b>19482</b>	<b>100%</b>

Table 13.

<b>Sentence Length</b>	<b>No. of Offenders</b>	<b>Percent</b>
Fine	1464	7%
Less than 1 Month	1908	10%
1 Month	1871	10%
2 Months	1182	6%
3 Months	1777	9%
4 Months	561	3%
5 Months	422	2%
6 Months	3110	16%
7 Months	93	0%
8 Months	120	1%
9 to 11 Months	905	5%
12 Months	2838	15%
13 to 17 Months	362	2%
18 Months	901	5%
19 to 23 Months	153	1%
24 Months	1151	6%
25 Months or More	664	3%
<b>Total</b>	<b>19482</b>	<b>100%</b>

Table 14.

<b>Weekend Sentences</b>	<b>No. of Offenders</b>	<b>Percent</b>
Weekend Sentence	340	2%
Non-Weekend Sentence	19142	98%
<b>Total</b>	<b>19482</b>	<b>100%</b>

Table 15.

<b>Age at Commitment</b>	<b>No. of Offenders</b>	<b>Percent</b>
Sixteen	1	0%
Seventeen	255	1%
Eighteen	684	3%
Nineteen	815	4%
Twenty	832	4%
Twenty-One	819	4%
Twenty-Two	785	4%
Twenty-Three	707	4%
Twenty-Four	672	3%
Twenty-Five	724	4%
26 to 29	3082	16%
30 to 39	6822	35%
40 to 64	3248	17%
65 and Older	36	0%
<b>Total</b>	<b>19482</b>	<b>100%</b>

Table 16.

<b>Sex/Gender</b>	<b>No. of Offenders</b>	<b>Percent</b>
Female	1043	5%
Male	18439	95%
<b>Total</b>	<b>19482</b>	<b>100%</b>

Table 17.

<b>Race/Ethnicity</b>	<b>No. of Offenders</b>	<b>Percent</b>
Caucasian	11303	58%
African American	4365	22%
Hispanic	3597	19%
Other	217	1%
<b>Total</b>	<b>19482</b>	<b>100%</b>

Table 18.

<b>Marital Status</b>	<b>No. of Offenders</b>	<b>Percent</b>
Single	10261	53%
Married	1746	9%
Divorced	1155	6%
Separated	288	1%
Widowed	40	0%
Common Law	5	0%
Unknown	5987	31%
<b>Total</b>	<b>19482</b>	<b>100%</b>

Table 19.

<b>Last Grade Completed</b>	<b>No. of Offenders</b>	<b>Percent</b>
First or Less	34	0%
Second	21	0%
Third	51	0%
Fourth	60	0%
Fifth	85	0%
Sixth	159	1%
Seventh	246	1%
Eighth	658	3%
Ninth	1613	8%
Tenth	2726	14%
Eleventh	2726	14%
Twelfth	7129	37%
Some College	1662	8%
College Graduate	367	2%
Graduate School	168	1%
Unknown	1777	9%
<b>Total</b>	<b>19482</b>	<b>100%</b>



Table 20.

<b>Place of Birth</b>	<b>No. of Offenders</b>	<b>Percent</b>
Barnstable County	150	1%
Berkshire County	367	2%
Bristol County	1506	8%
Dukes County	3	0%
Essex County	952	5%
Franklin County	94	0%
Hampden County	231	1%
Hampshire County	28	0%
Middlesex County	1602	8%
Nantucket County	6	0%
Norfolk County	630	3%
Plymouth County	513	3%
Suffolk County	3482	18%
Worcester County	234	1%
Mass-No County	2786	14%
Out of State	2539	13%
U.S. Territory	1339	7%
Foreign Country	866	4%
Unknown	2154	11%
<b>Total</b>	<b>19482</b>	<b>100%</b>

Table 21.

<b>County of Residence</b>	<b>No. of Offenders</b>	<b>Percent</b>
Barnstable County	521	3%
Berkshire County	685	3%
Bristol County	2270	12%
Dukes County	37	0%
Essex County	1813	9%
Franklin County	225	1%
Hampden County	2172	11%
Hampshire County	298	1%
Middlesex County	2298	12%
Nantucket County	9	0%
Norfolk County	887	5%
Plymouth County	1265	6%
Suffolk County	1765	9%
Worcester County	2401	12%
Mass-No County	201	1%
Out of State	412	2%
U.S. Territory	1	0%
Foreign Country	3	0%
Unknown	2219	11%
<b>Total</b>	<b>19482</b>	<b>100%</b>

# **Appendix I.**

## **County Facilities in Massachusetts, Address and Year Built**

(Information represents the end of 1996)

### **Barnstable County**

Barnstable County Jail and House of Correction  
Main Street  
Barnstable, MA 02630  
Year Built - 1935  
Sheriff John F. Demello

### **Berkshire County**

Berkshire County and House of Correction  
264 Second Street  
Pittsfield, MA 01201  
Year Built - 1870  
Sheriff Carmen C. Massimiano, Jr.

### **Bristol County**

Bristol County Jail and House of Correction  
(Ash Street)  
226 Ash Street  
New Bedford, MA 02740  
Year Built - 1853  
Sheriff David R. Nelson

Bristol County Jail and House of Correction  
(North Dartmouth)  
400 Faunce Corner Road  
North Dartmouth, MA 02747  
Year Built - 1991  
Sheriff David R. Nelson

Eastern Massachusetts Correctional Alcohol  
Center  
593 Kempton Street  
New Bedford, MA 02740  
Year Opened - 1987  
Sheriff David R. Nelson

### **Dukes County**

Dukes County Jail and House of Correction  
149 Main Street  
Edgartown, MA 02539  
Year Built - 1863  
Sheriff Christopher S. Look, Jr.

### **Essex County**

Essex County Jail and House of Correction  
20 Manning Avenue  
Middleton, MA 01949  
Year Built - 1991  
Sheriff Charles H. Reardon

Essex County Correctional Alternative Center  
165 Marston Avenue  
Lawrence, MA 01840  
Year Built - 1893  
Sheriff Charles H. Reardon

### **Franklin County**

Franklin County Jail and House of Correction  
160 Elm Street  
Greenfield, MA 01302  
Year Built - 1856  
Sheriff Frederick B. MacDonald

### **Hampden County**

Hampden County Jail and House of Correction  
627 Randell Road  
Ludlow, MA 01056  
Year Built - 1990  
Sheriff Michael J. Ashe, Jr.

Western Massachusetts Correctional Alcohol  
Center  
26 Howard Street  
Springfield, MA 01105  
Year Built - 1985  
Sheriff Michael J. Ashe, Jr.

### **Hampshire County**

Hampshire County Jail and House of Correction  
205 Rockyhill Road  
Northampton, MA 01060  
Year Built - 1985  
Sheriff Robert J. Garvey

### **Middlesex County**

Middlesex County Jail and House of Correction  
Treble Cove Road  
Billerica, MA 01821  
Year Built - 1930  
Sheriff Brad Bailey

Middlesex County Jail  
40 Thorndike Street  
Cambridge, MA 02141  
Year Built - 1984  
Sheriff Brad Bailey

### **Nantucket County**

Nantucket County Sheriff's Department  
16 Broad Street  
Nantucket, MA 02554  
Sheriff Harry E. Clute, Sr.

### **Norfolk County**

Norfolk County Sheriff's Office and Correctional  
Center  
200 West Street  
Dedham, MA 02026  
Year Built - 1991  
Sheriff Clifford H. Marshall

## **Appendix I.**

(continued)

Braintree Alternative Center  
2001 Washington Street  
Braintree, MA 02184  
Year Built - 1985  
Sheriff Clifford H. Marshall

### **Plymouth County**

Plymouth County Jail and House of Correction  
26 Long Pond Road  
Plymouth, MA 02360  
Year Built - 1994  
Sheriff Peter Forman

### **Suffolk County**

Suffolk County House of Correction (South Bay)  
20 Bradston Street  
Boston, MA 02118  
Year Built - 1992  
Sheriff Robert C. Rufo

Suffolk County Jail (Nashua Street)  
200 Nashua Street  
Boston, MA 02114  
Year Built - 1990  
Sheriff Robert C. Rufo

### **Worcester County**

Worcester County Jail and House of Correction  
5 Paul X. Tivnan Drive  
West Boylston, MA 01538  
Year Built - 1973  
Sheriff John M. Flynn

## **Appendix II.**

**Population in County Correctional Facilities,  
January 1, 1996 to December 31, 1996**

<b>Facility</b>	<b>Average Daily Population</b>	<b>Beginning Population</b>	<b>Ending Population</b>	<b>Design Capacity</b>	<b>% ADP Capacity</b>
Barnstable	281	268	303	110	255%
Berkshire	245	215	249	116	211%
Bristol	1143	1072	1176	666	172%
Dukes	22	25	23	19	116%
Essex	1367	1227	1370	635	215%
Franklin	127	125	127	63	202%
Hampden	1479	1340	1536	1178	126%
Hampden-OUI	130	131	128	125	104%
Hampshire	261	237	266	248	105%
Middlesex	1290	1218	1276	1035	125%
Norfolk	578	506	609	379	153%
Plymouth	1145	1121	1181	1140	100%
Suffolk-Nashua St.	580	530	594	453	128%
Suffolk-South Bay	1666	1447	1830	1146	145%
Worcester	1204	1085	1164	790	152%
<b>Total</b>	<b>11518</b>	<b>10547</b>	<b>11832</b>	<b>8103</b>	<b>142%</b>

## **Glossary**

ADP	Average Daily Population.
Design Capacity	Population capacity each institution was designed to hold.
<b>Facilities</b>	
BAC	Braintree Alternative Center.
EMCAC	Eastern Massachusetts Correctional Alcohol Center.
LCAC	Lawrence Correctional Alternative Center.
WMCAC	Western Massachusetts Correctional Alcohol Center.
<b>Offenses</b>	
Armed Assault	Includes armed assault with intent to rob, armed assault in a dwelling, assault and battery with a deadly weapon, and assault with a deadly weapon.
Assault on Female Under Sixteen with Intent to Rape	Includes indecent assault and battery on a child under 14 years old.
Assault with Intent to Commit Rape	Includes indecent assault and battery on a person over 14, Indecent assault on a mentally retarded person.
Assault with Intent to Murder	Includes attempted murder and accessory to murder.
Controlled Substances	
Class A	Heroin, Morphine.
Class B	Amphetamines, Barbiturates, Cocaine.
Class C	LSD, Hashish.
Class D	Marijuana.
Class E	Other prescription drugs.
Motor Vehicle Offenses	Includes leaving the scene of an accident.
Other	Includes violation of abuse prevention law, deriving support from a prostitute, bribery, attempt to commit a crime, and contempt of court.
O.U.I.	Operating Under the Influence of Alcohol.
Other Pornography or Obscenities	Includes other sex offenses.
Prostitution	Includes common night walker.
Rape	Includes aggravated rape.
Rape of a Child	Includes rape of a female under sixteen years old.
Receiving Stolen Goods (RSG)	Includes common receiver of stolen goods.
Unarmed Assault	Includes unarmed assault with intent to rob, assault, assault and battery, and other assaults.
Unnatural and Lascivious Acts	Includes unnatural acts with a child under 16 years old.
Weapon Offenses	Includes weapons violation, Bartley-Fox gun law.