

Massachusetts Division of Insurance  
Quarterly Report of Health Maintenance Organization Membership in  
Insured and Government Health Plans as of March 31, 2022<sup>1,2</sup>

MEMBERSHIP TRENDS

Closed Network

COMPARISON OF 1st QUARTER MEMBERSHIP TO THOSE OF PRIOR THREE QUARTERS	2nd Quarter 2021 Members at End of Quarter	3rd Quarter 2021 Members at End of Quarter	4th Quarter 2021 Members at End of Quarter	1st Quarter 2022 Members at End of Quarter	Member Change from 4th Qtr. 2021 to 1st Qtr. 2022	Percent Change from 4th Qtr. 2021 to 1st Qtr. 2022	1st Quarter 2022 Share of Massachusetts Closed Network Market
Aetna Health, Inc. (a Connecticut corporation)	0	0	0	956	956	100.00%	0.05%
Aetna Health, Inc. (a Pennsylvania corporation)	1,435	1,571	1,571	563	(1,008)	100.00%	0.03%
AllWays Health Partners, Inc. <sup>3</sup>	118,537	119,039	119,004	119,769	765	0.64%	6.21%
Blue Cross and Blue Shield of Massachusetts HMO Blue, Inc.	346,373	341,677	336,004	325,307	(10,697)	-3.18%	16.86%
Boston Medical Center Health Plan, Inc. d/b/a Wellsense	339,135	342,455	343,664	343,135	(529)	-0.15%	17.78%
Central Mass Health LLC d/b/a Mass Advantage <sup>4</sup>	0	0	0	807	807	100.00%	0.04%
Commonwealth Care Alliance Massachusetts, LLC. <sup>4</sup>	0	0	0	456	456	100.00%	0.02%
ConnectiCare of Massachusetts, Inc.	157	148	118	93	(25)	-21.19%	0.00%
eternalHealth, Inc. <sup>4</sup>	0	0	0	3	3	100.00%	0.00%
Fallon Community Health Plan, Inc.	175,996	171,220	169,642	160,499	(9,143)	-5.39%	8.32%
Harvard Pilgrim Health Care, Inc.	125,891	125,174	124,718	112,341	(12,377)	-9.92%	5.82%
Health New England, Inc.	114,792	116,309	117,361	116,942	(419)	-0.36%	6.06%
Humana Wisconsin Health Organization Insurance Corporation <sup>4</sup>	0	0	0	0	0	0.00%	0.00%
Molina Healthcare of Wisconsin, Inc. d/b/a Senior Whole Health <sup>4</sup>	0	0	0	219	219	100.00%	0.01%
Tufts Associated HMO, Inc.	246,378	244,926	243,530	248,710	5,180	2.13%	12.89%
Tufts Health Public Plans, Inc. (formerly Network Health, LLC)	114,792	116,309	117,361	480,402	363,041	309.34%	24.90%
UnitedHealthcare of Wisconsin, Inc.	0	0	0	12,772	12,772	100.00%	0.66%
WellCare Health Plans of Massachusetts, Inc. <sup>4</sup>	0	0	0	6,555	6,555	100.00%	0.34%
Totals	1,583,486	1,578,828	1,572,973	1,929,529	356,556	22.67%	100.0%

<sup>1</sup> Information reported by HMOs as of the end of the third quarter of 2022 is based upon the Massachusetts Division of Insurance's "Guidelines for Reporting Membership & Utilization Statistics - Version 6.1" that instructs HMOs to exclude members for whom the HMO did not bear any financial risk.

<sup>2</sup> Starting with the first quarter of 2017, carriers no longer submit data for this report directly to the Division. Instead, the data shown in this report was produced by the Center for Health Information and Analysis using data submissions by the HMOs to the All-Payer Claims Database.

<sup>3</sup> Always Health Partners, Inc. has notified the Division that it will be changing its name to Mass General Brigham Health Plan, Inc. as of January 1, 2023.

<sup>4</sup> Central Mass Health, LLC d/b/a Mass Advantage, Commonwealth Care Alliance Massachusetts, LLC., eternalHealth, Inc.,UnitedHealthcare of Wisconsin, Inc., WellCare Health Plans of Massachusetts, Inc entered the Massachusetts market effective January 1st, 2022.

Massachusetts Division of Insurance  
Quarterly Report of Health Maintenance Organization Membership in  
Insured and Government Health Plans as of March 31, 2022<sup>1,2</sup>

MEMBERSHIP TRENDS

Preferred Network

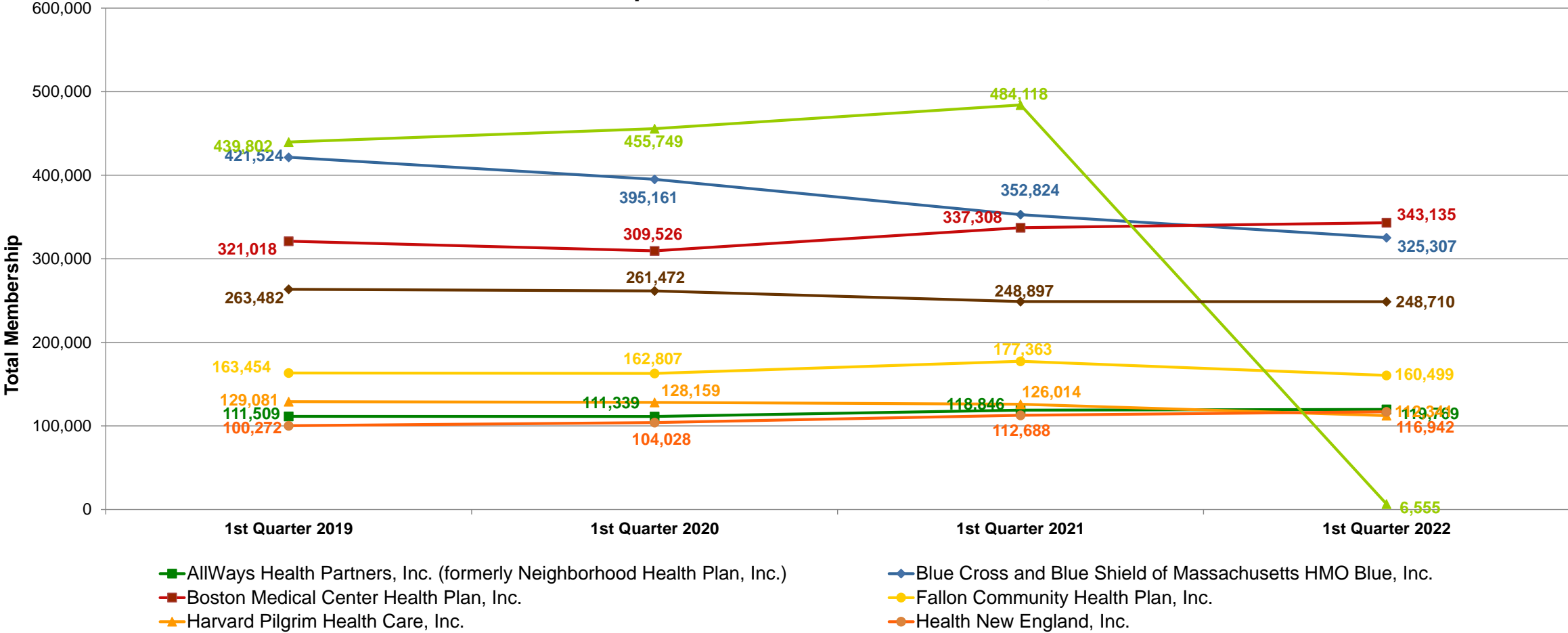
COMPARISON OF 1st QUARTER MEMBERSHIP TO THOSE OF PRIOR THREE QUARTERS	2nd Quarter 2021 Members at End of Quarter	3rd Quarter 2021 Members at End of Quarter	4th Quarter 2021 Members at End of Quarter	1st Quarter 2022 Members at End of Quarter	Member Change 4th Qtr. 2021 to 1st Qtr. 2022	Percent Change 4th Qtr. 2021 to 1st Qtr. 2022	1st Quarter 2022 Share of Massachusetts PPO Market
Aetna Health, Inc. (a Pennsylvania corporation)	0	0	0	0	0	0.00%	0.00%
AllWays Health Partners, Inc. (formerly Neighborhood Health Plan, Inc.) <sup>7</sup>	998	959	941	969	28	2.98%	0.44%
Blue Cross and Blue Shield of Massachusetts HMO Blue, Inc.	192,548	196,116	198,362	194,308	(4,054)	-2.04%	87.40%
ConnectiCare of Massachusetts, Inc.	0	0	22	49	27	122.73%	0.02%
Harvard Pilgrim Health Care, Inc.	19,951	20,234	19,850	18,981	(869)	-4.38%	8.54%
Health New England, Inc.	5,782	5,994	6,314	7,868	1,554	24.61%	3.54%
Tufts Associated HMO, Inc. <sup>8</sup>	229	229	212	156	(56)	-26.42%	0.07%
Totals	219,508	223,532	225,701	222,331	(3,370)	-1.49%	100.00%

<sup>1</sup> Information reported by HMOs as of the end of the third quarter of 2022 is based upon the Massachusetts Division of Insurance's "Guidelines for Reporting Membership & Utilization Statistics - Version 6.1" that instructs HMOs to exclude members for whom the HMO did not bear any financial risk.

<sup>2</sup> Starting with the first quarter of 2017, carriers no longer submit data for this report directly to the Division. Instead, the data shown in this report was produced by the Center for Health Information and Analysis using data submissions by the HMOs to the All-Payer Claims Database.

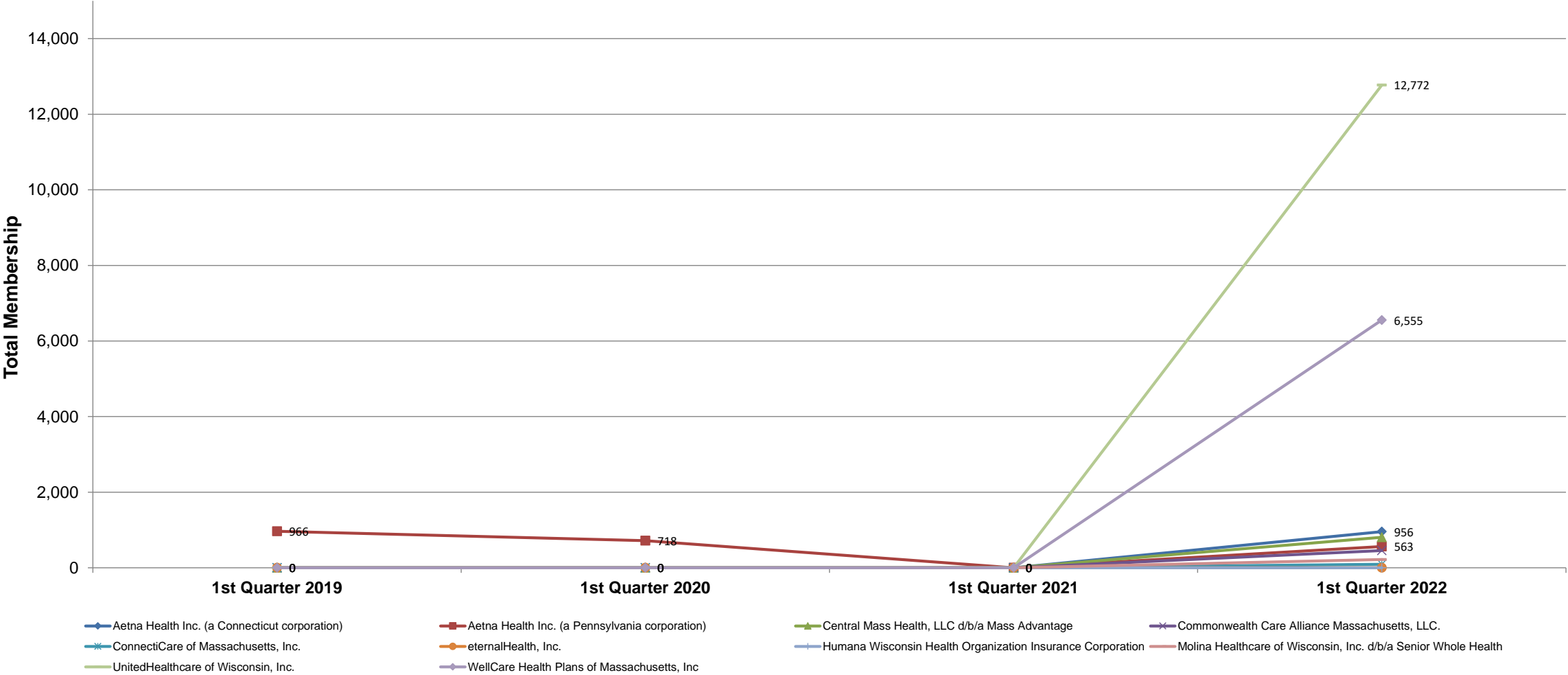
MEMBERSHIP TRENDS

HMOs with MA Membership in Closed Network Plans over 50,000 Members on 03/31/2022



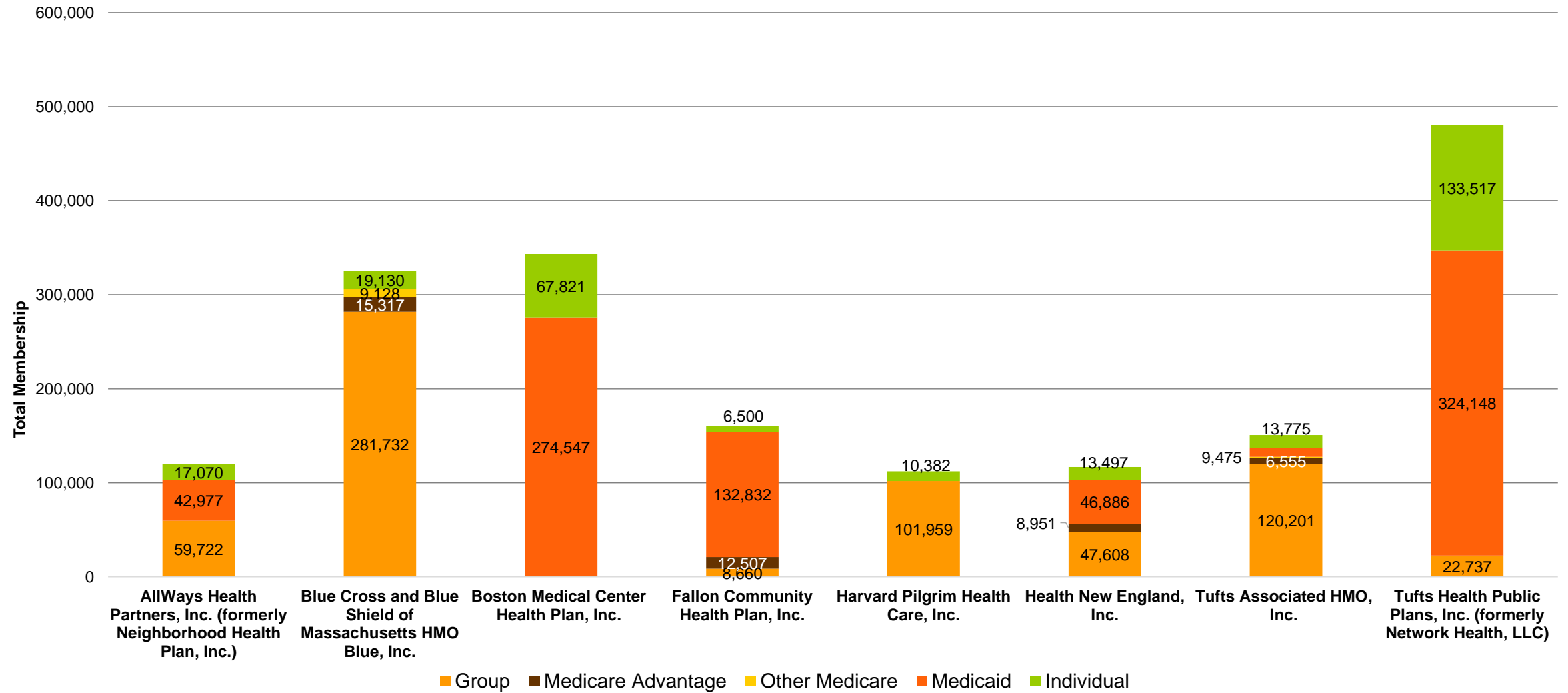
MEMBERSHIP TRENDS

HMOs with MA Membership in Closed Network Plans less than 50,000 Members on 03/31/2022



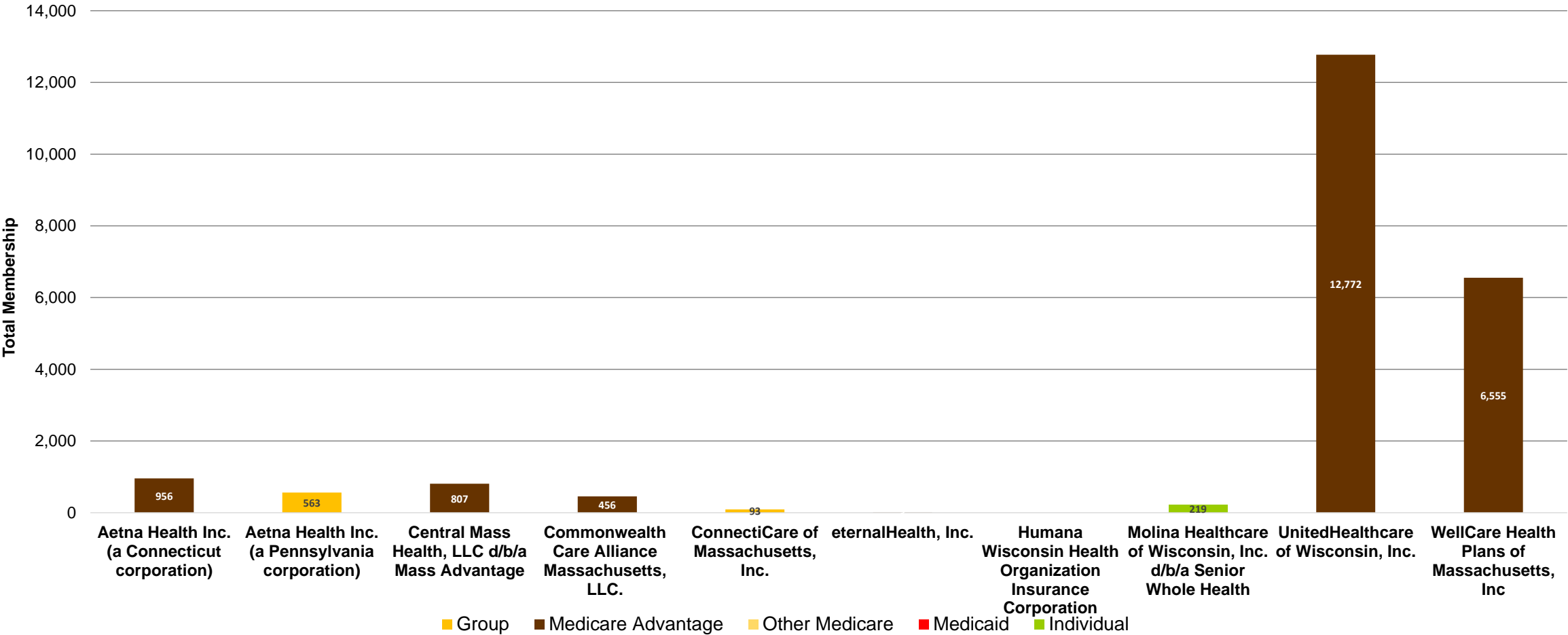
MEMBERSHIP TRENDS

HMOs with Massachusetts Membership over 50,00 Members on 03/31/2022



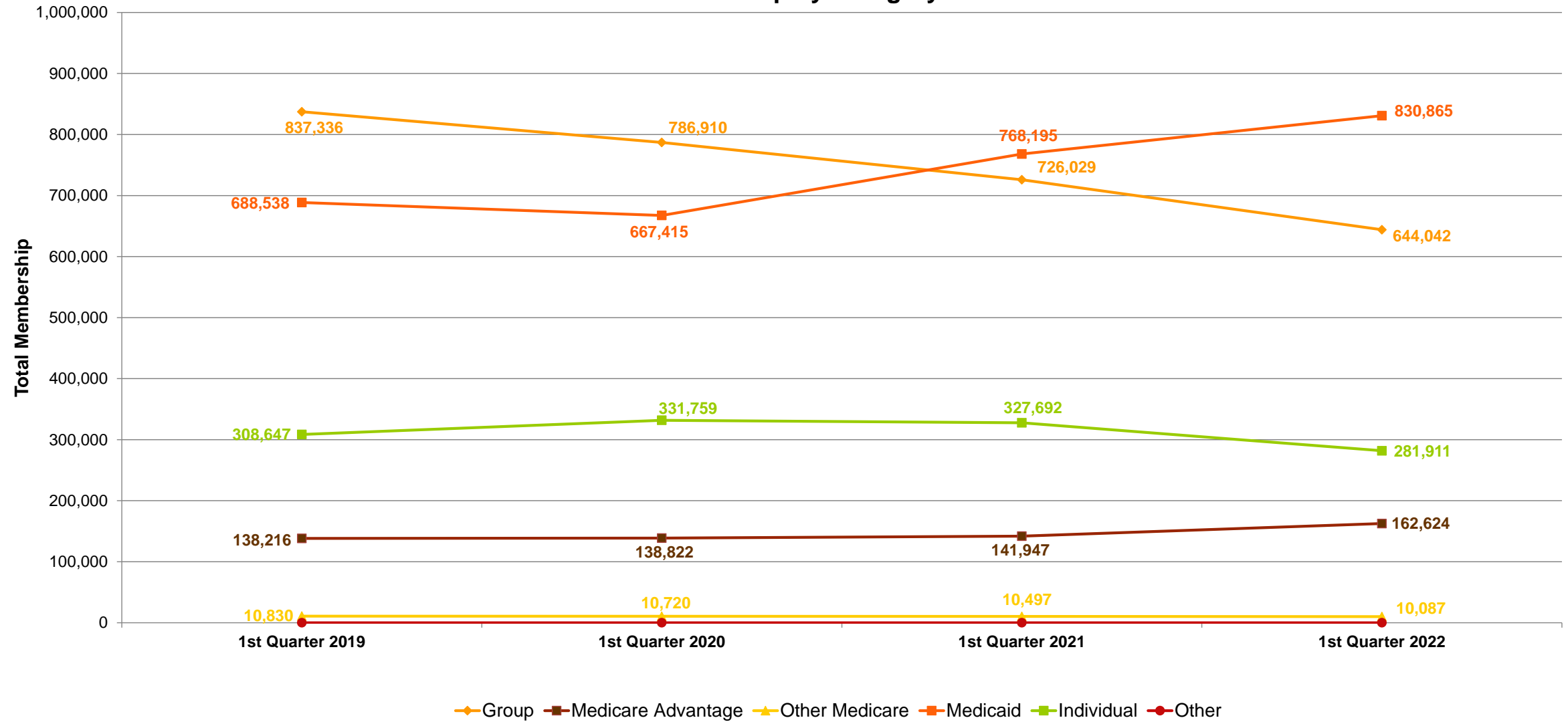
MEMBERSHIP TRENDS

HMOs with Massachusetts Membership less than 50,000 Members as of 03/31/2022

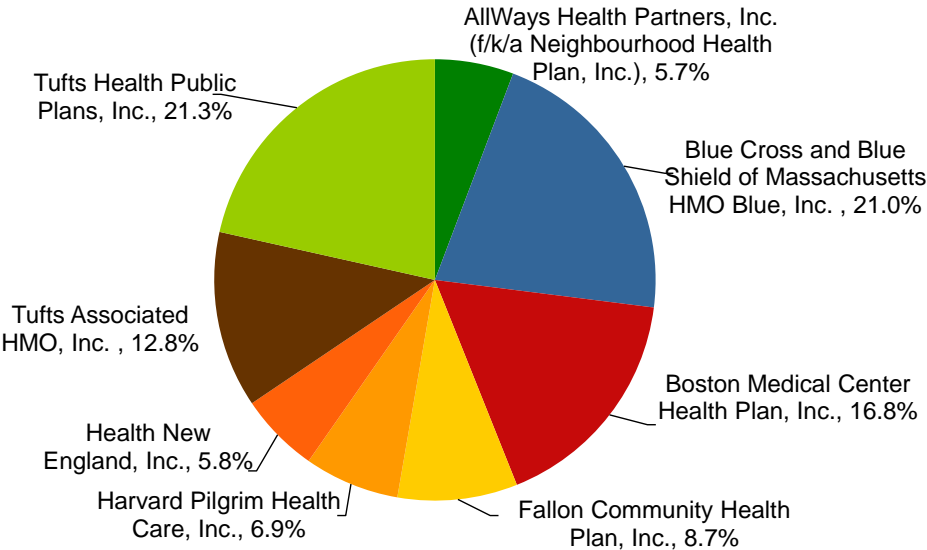


MEMBERSHIP TRENDS

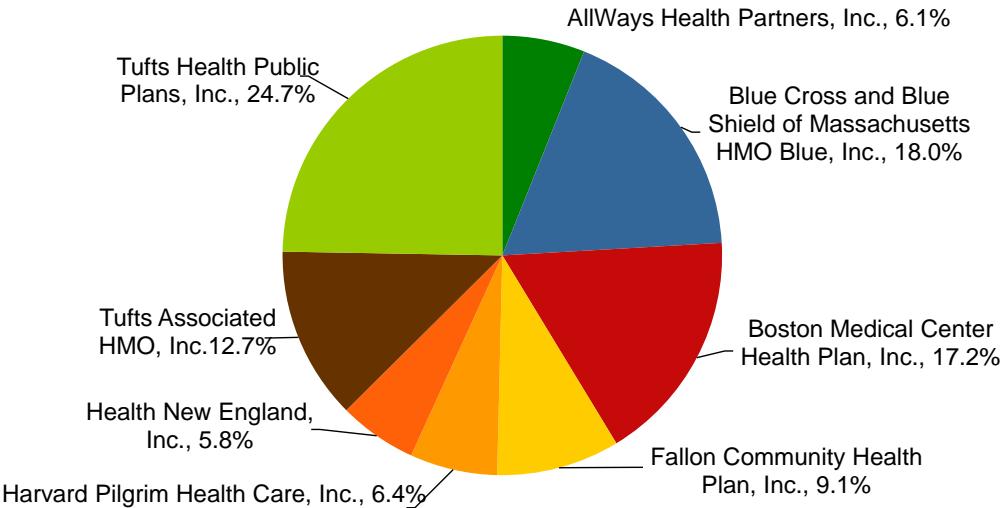
Total HMO Membership by Category of Business



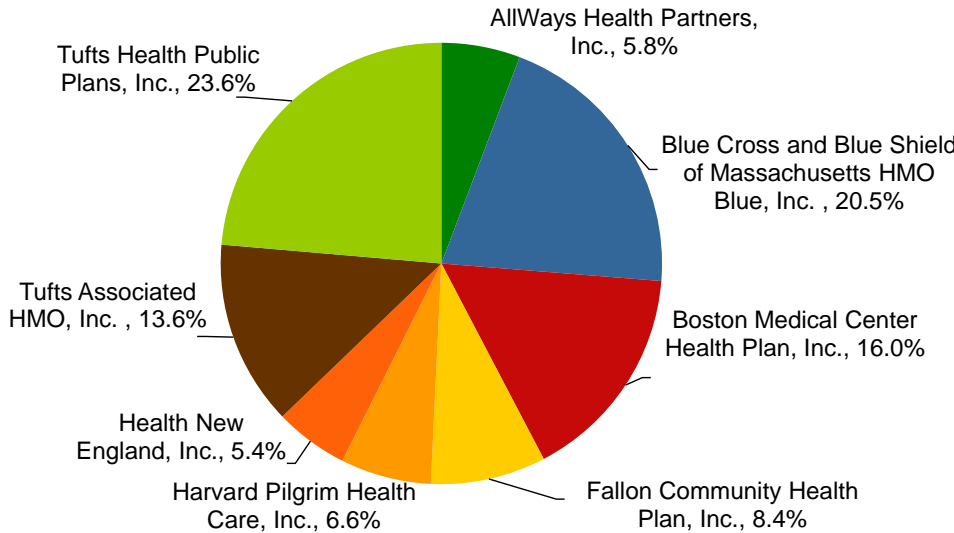
1st Quarter 2019 Share of Massachusetts HMO Market



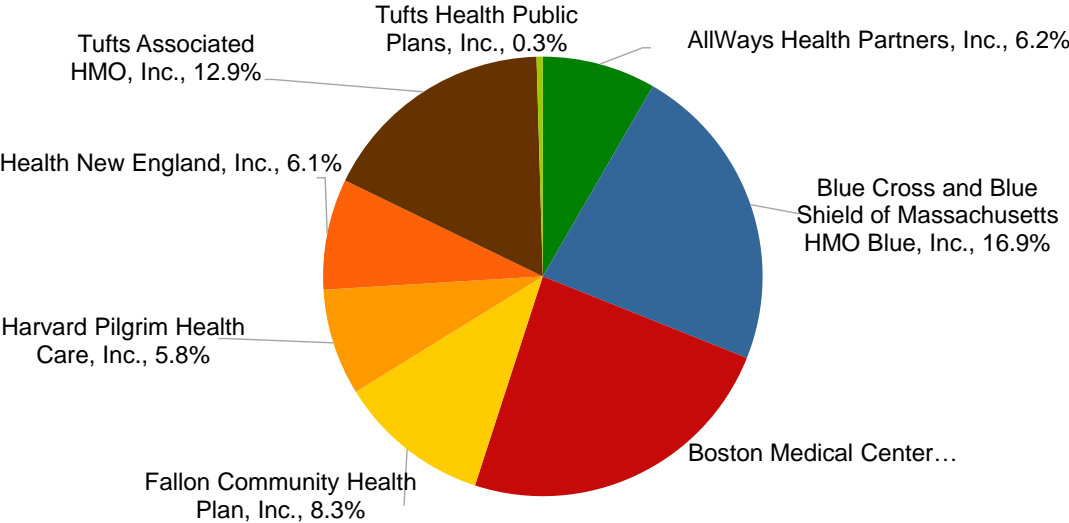
1st Quarter 2021 Share of Massachusetts HMO Market



1st Quarter 2020 Share of Massachusetts HMO Market



1st Quarter 2022 Share of Massachusetts HMO Market



<sup>1</sup>Membership charts reflect those persons enrolled only in closed network plans; so-called "dual certificate option" plan (POS) members and insured preferred provider plan members are not included in this report.